A large, stylized graphic in the background featuring a yellow sun with rays and several green leaves of varying shades, all set against a white background.

CSZ-26-07 (Quasi-Judicial)

(Adoption Hearing BCC Land Use Meeting 06-09-2026)

Sandra W. Welles Ranch LLC



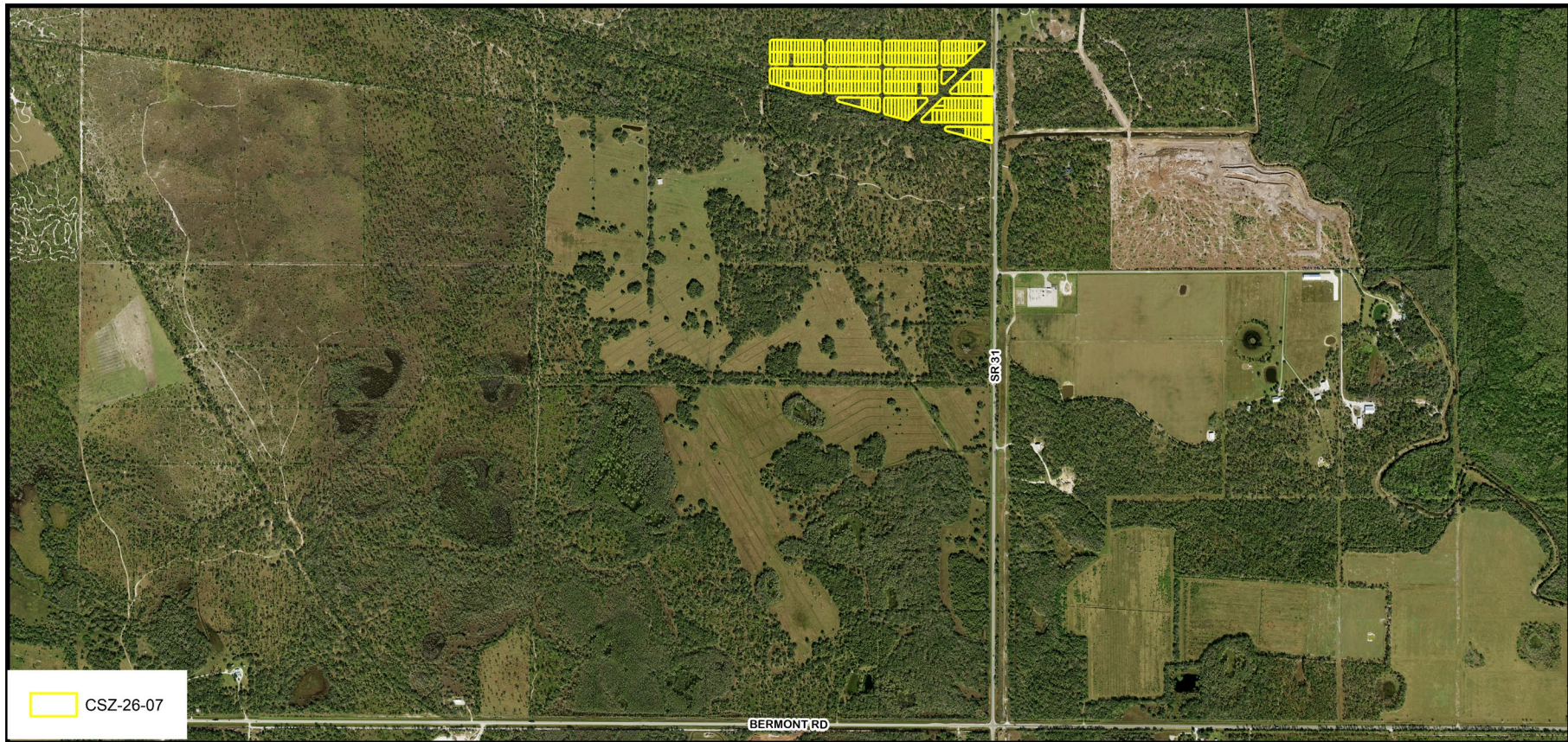
CHARLOTTE COUNTY
FLORIDA

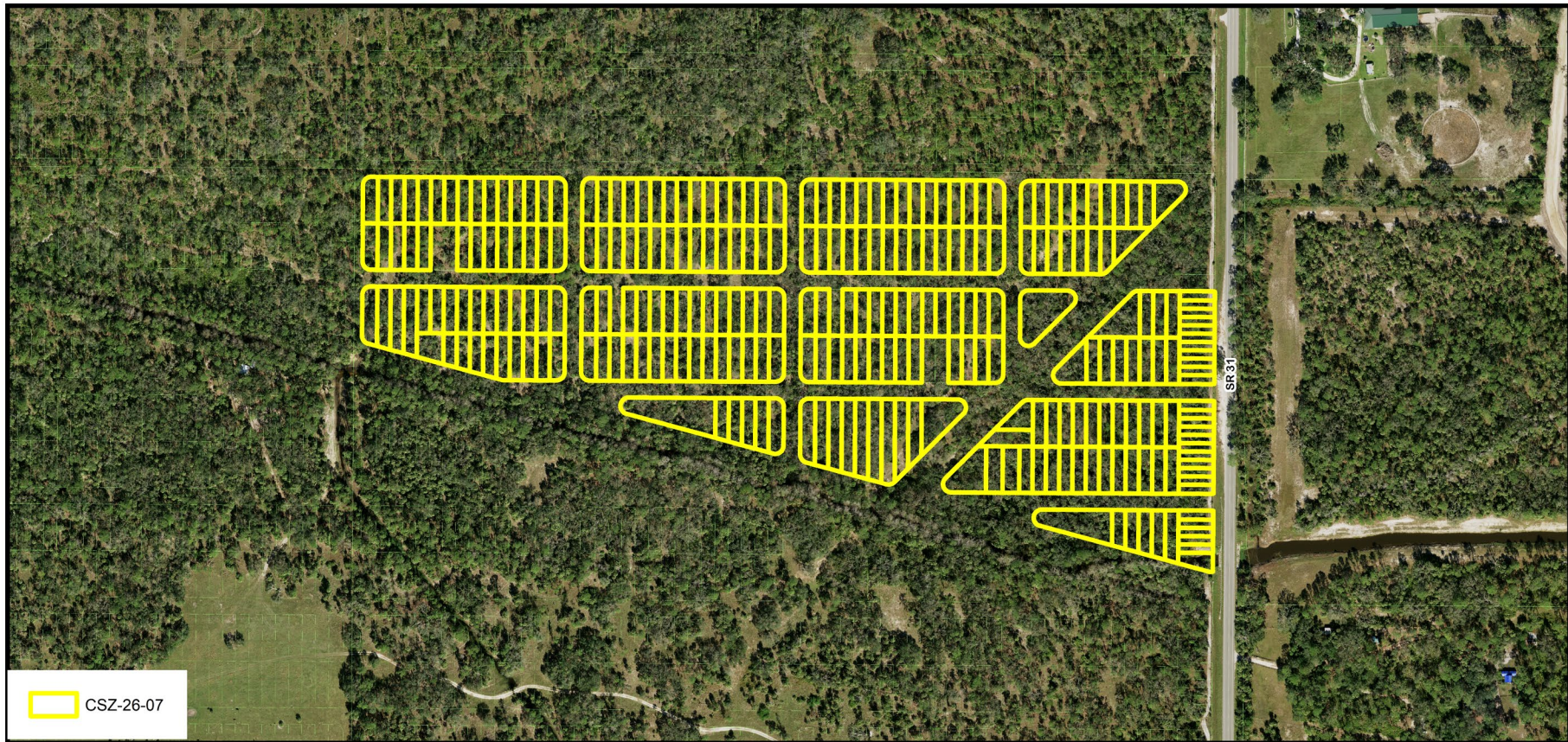
Request

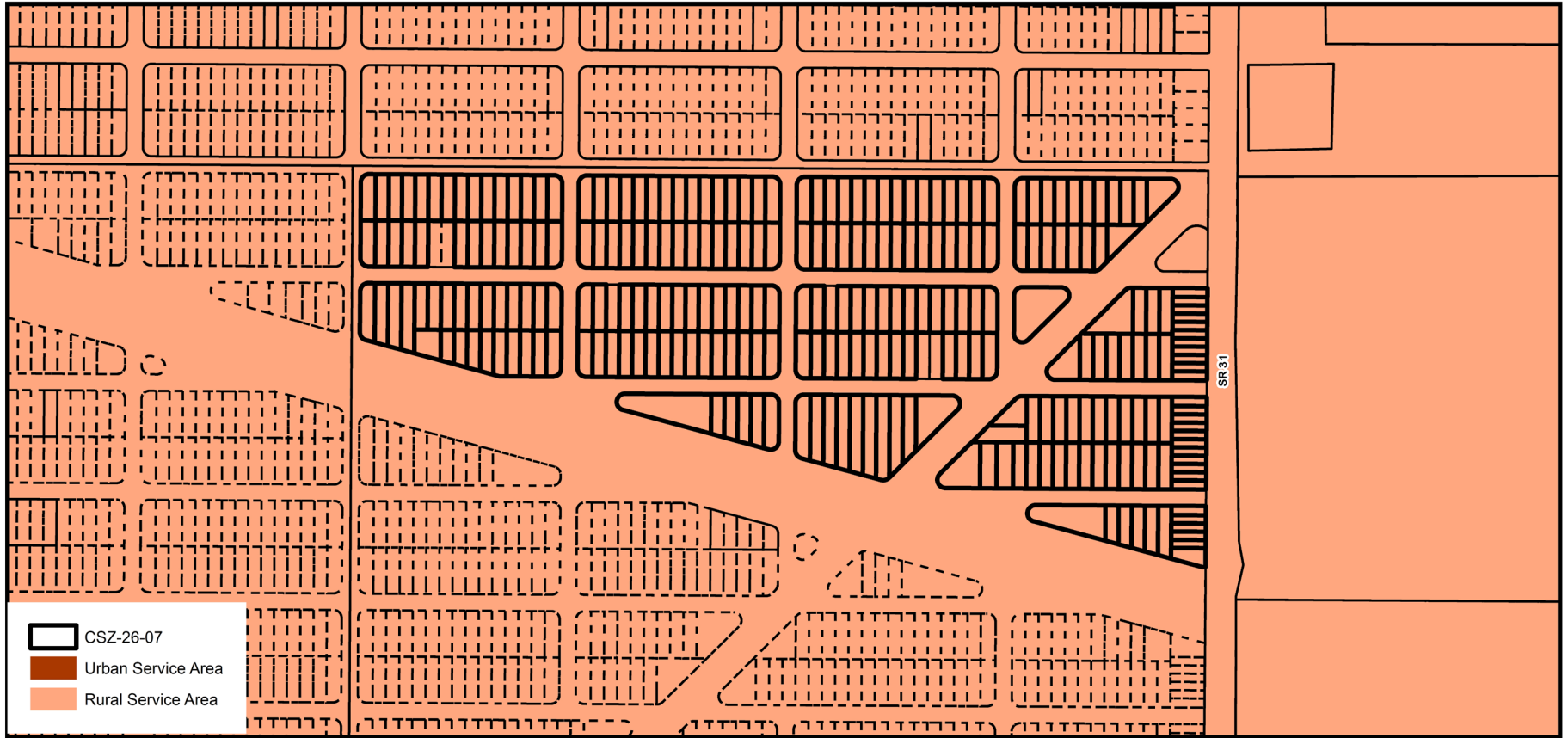
- To certificate Sending Zones, including 279 platted lots in Blocks 1 through 11, 16, & 33, and within the Del Verde Section G subdivision, generally located north of Bermont Road and west of SR 31, in the East County area, containing 36.9± acres; for calculation and severance of 279 density units
- The property is located in Commission District I.



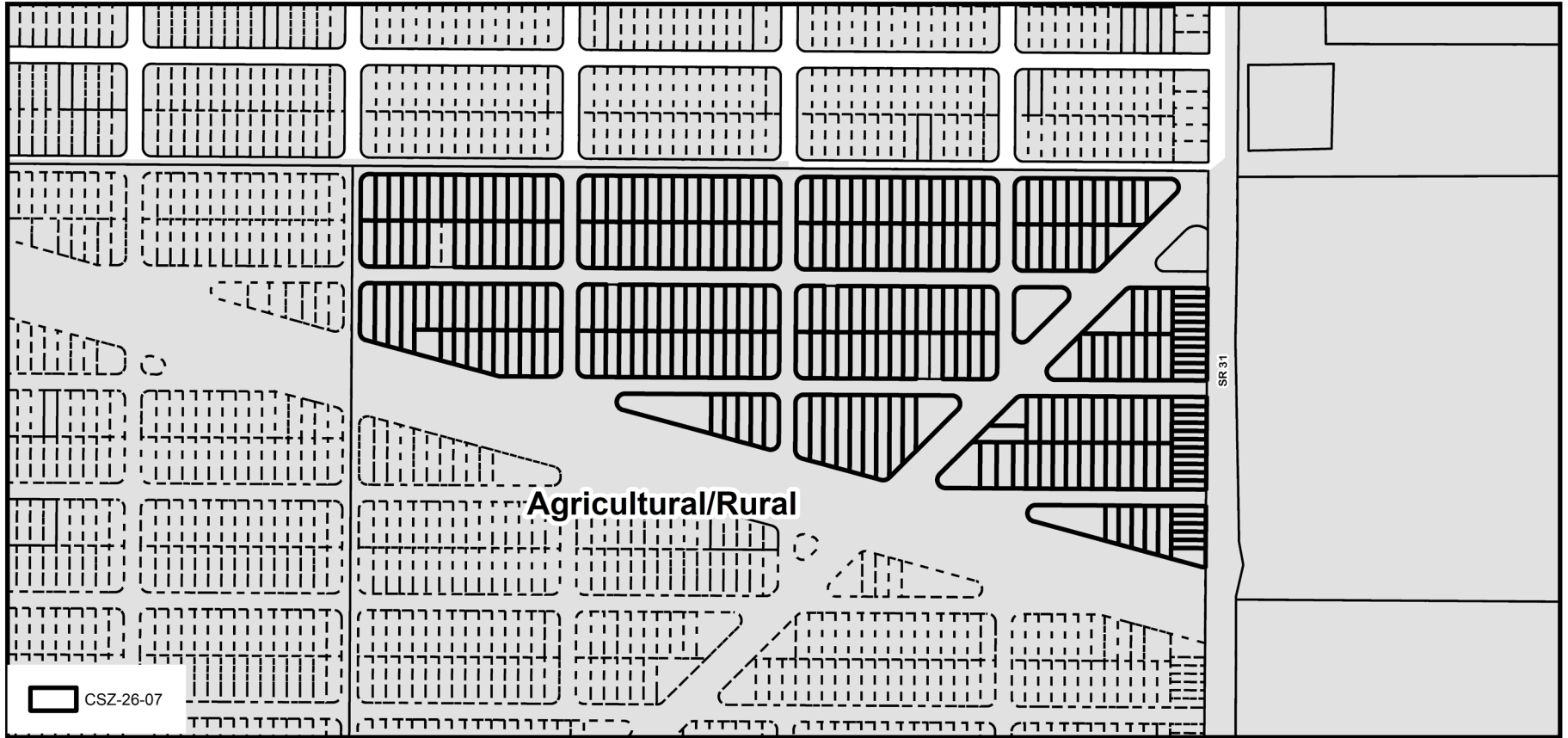
CSZ-26-07 Location Map



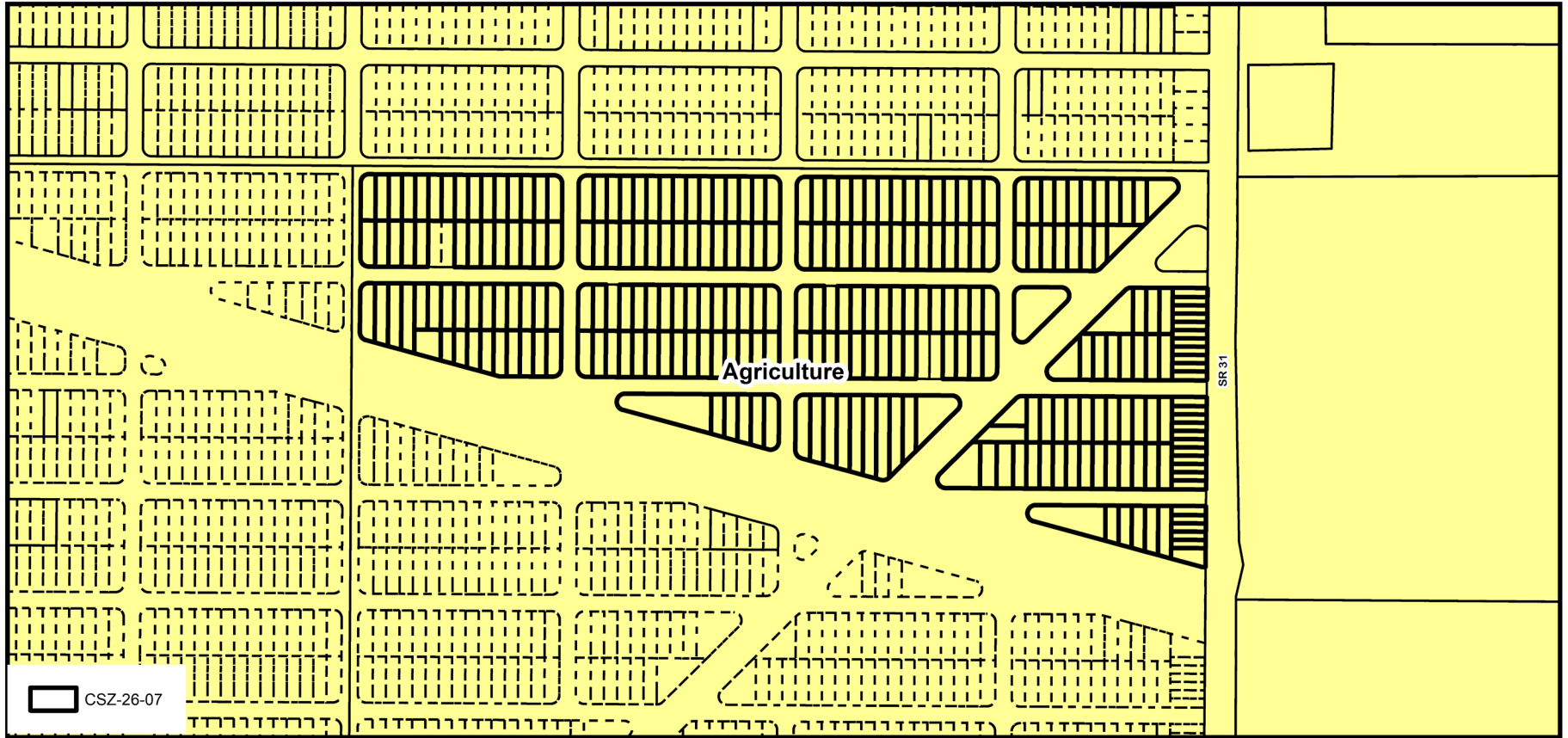




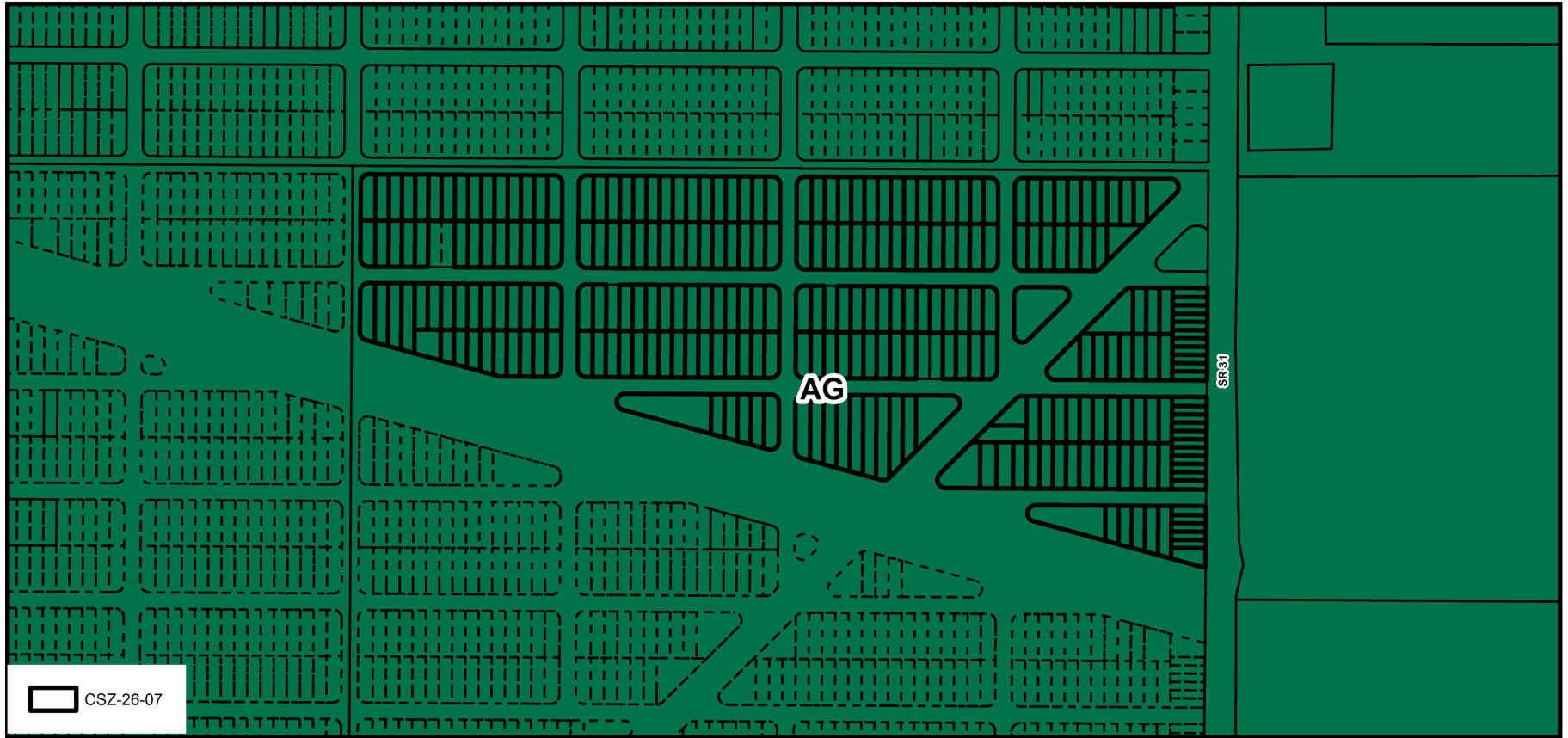
CSZ-26-07 Service Area Delineation



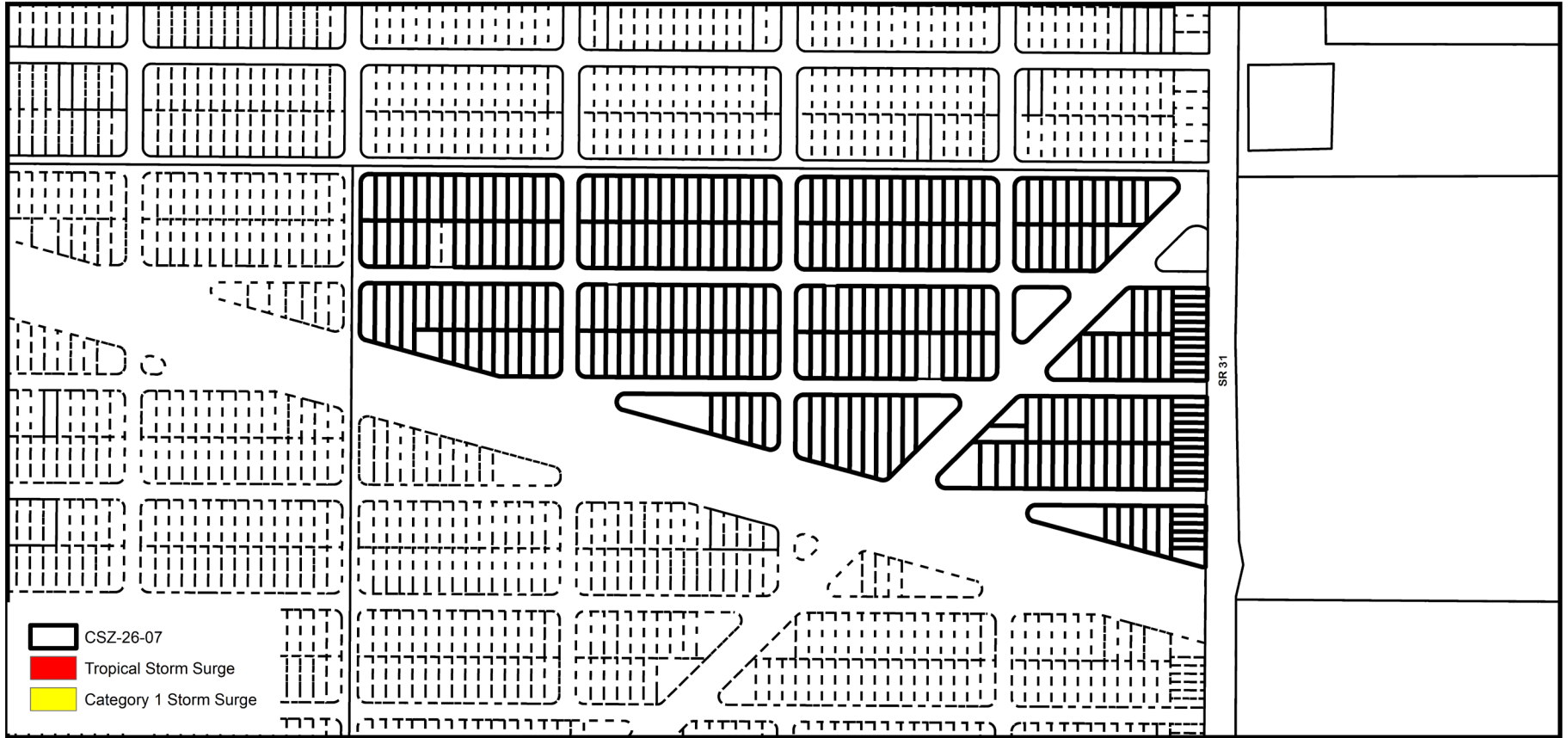
CSZ-26-07 Framework



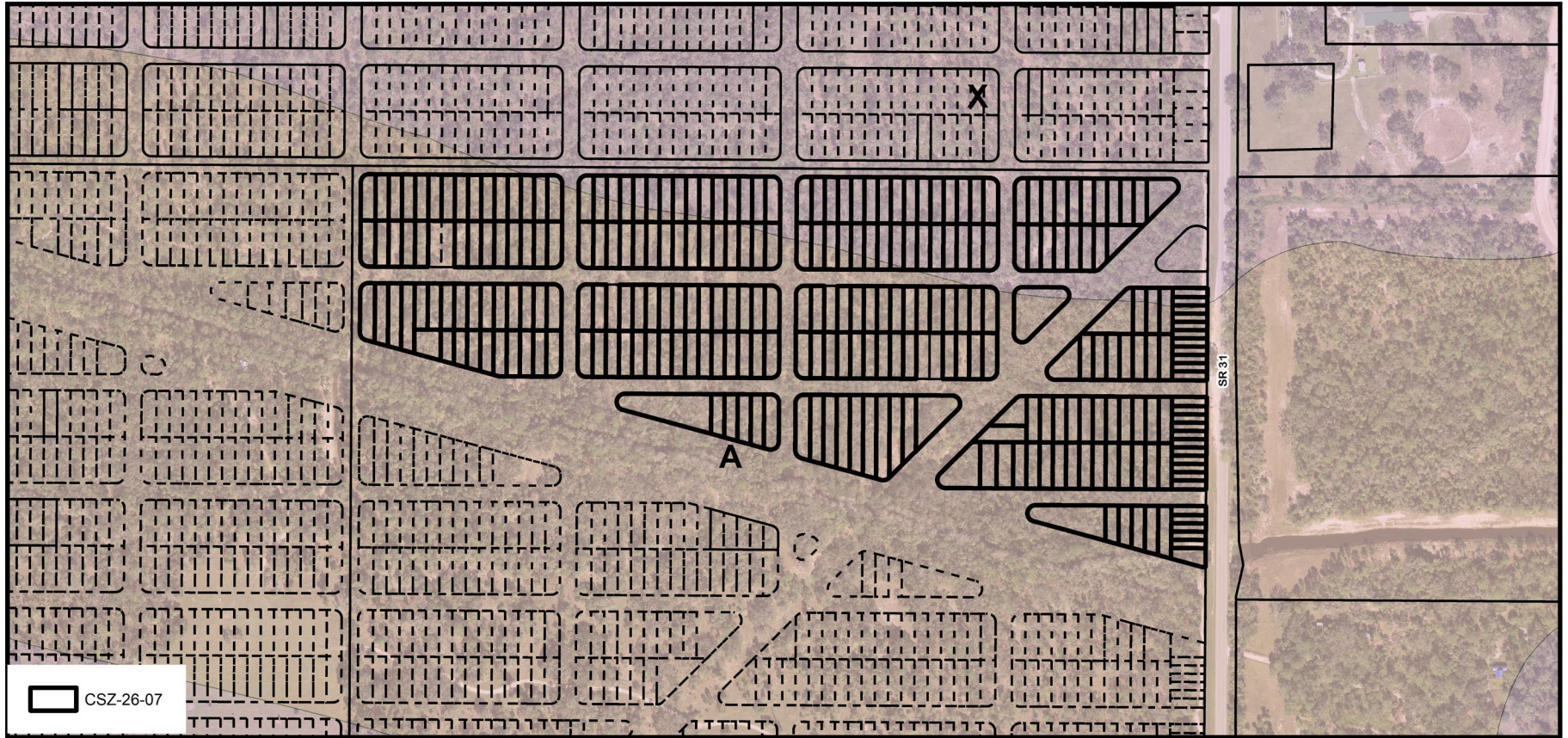
CSZ-26-07 FLUM Designations



CSZ-26-07 Zoning Designations



CSZ-26-07 Coastal High Hazard Area



CSZ-26-07 Flood Zones (Subject Property - A & X Zones)