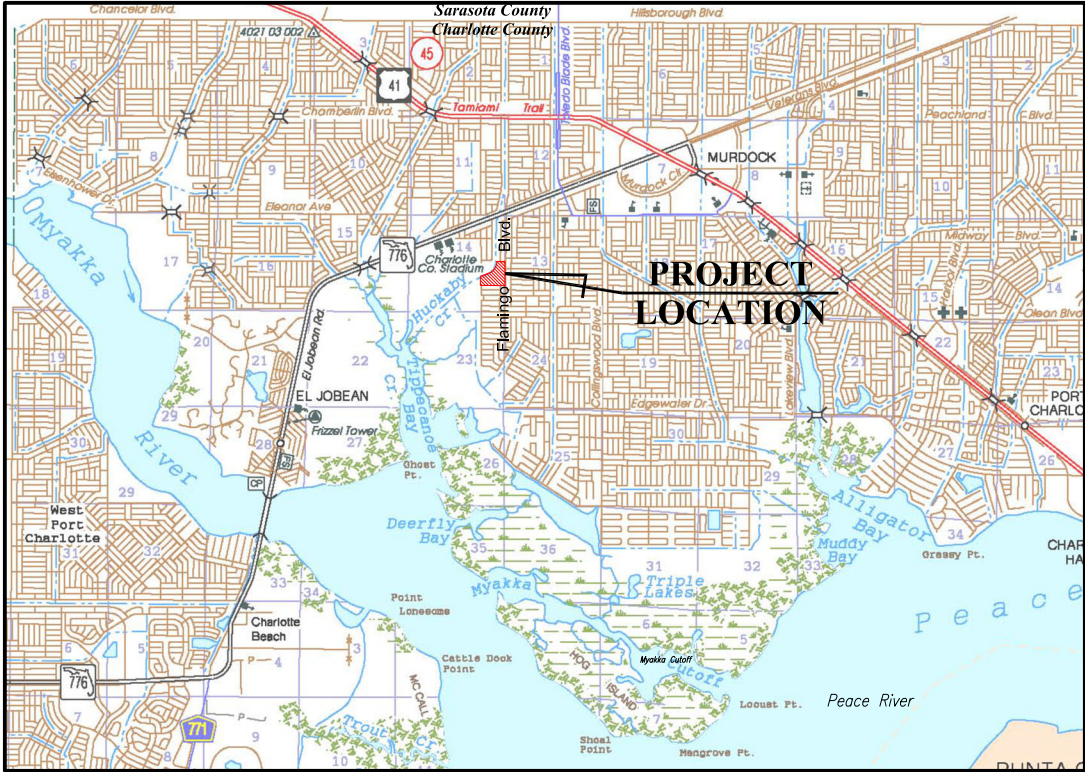


CONSTRUCTION PLANS  
FOR  
WALKING PATH DESIGN  
TIPPECANOE II  
ENVIRONMENTAL PARK  
FOR  
CHARLOTTE COUNTY BOARD OF COUNTY COMMISSIONERS  
CHARLOTTE COUNTY, FLORIDA

SECTION 14  
TOWNSHIP 20 SOUTH, RANGE 21 EAST

INDEX OF PLANS	
SHEET NO.	DESCRIPTION
C1	COVER SHEET - LOCATION MAP
C2	GENERAL NOTES, ABBREVIATIONS AND LEGENDS
C3	AERIAL MAP
C4	EXISTING CONDITIONS & DEMOLITION PLAN
C5	SITE PLAN
C6	PAVING, GRADING, & DRAINAGE PLAN
C7	TYPICAL DETAILS
C8	EROSION CONTROL DETAILS (BMP's)



LOCATION MAP



May, 2024

County Commissioners

Ken Doherty, District 1  
Christopher Constance, District 2  
Bill Truex, District 3  
Stephen R. Deutsch, District 4  
Joe Tiseo, District 5

Director of Public Works

John Elias

County Engineer

Joanne Vernon, P.E.

Projects Manager

Lacey Solomon



JOHNSON ENGINEERING, INC.  
17833 MURDOCK CIRCLE  
PORT CHARLOTTE, FLORIDA 33948  
PHONE (941) 625-9919  
E.B. #642 & L.B. #642

REGISTERED PROFESSIONAL ENGINEER  
FLORIDA LICENSE NO. 64594

CHRISTOPHER D. BEERS, PE

DATE

SHEET NUMBER  
C1

AC  
APPROX.  
BM  
BOT  
CB  
CJ  
CMP  
CPP  
CO  
CF  
CY  
CU. IN.  
C/L  
CLF  
CONC  
CONT  
CTRS  
CCUD  
DIA., Ø  
DIM  
DIST.  
DWG  
E  
EL/ELEV  
EQUIP  
ERCP  
EX/EXIST  
FDOT  
FND  
FIN  
FT  
GR  
HOR  
HP  
INV  
LF  
LT.  
M.E.  
MAX  
MES  
MFR  
MIN  
MISC  
MUP  
N  
NE  
NW  
NTS  
NOM  
O/S  
OC  
OCWE  
OD  
PCF  
PSF  
PSI  
PVC  
PAVT  
PC  
PCC  
PGL  
P/L  
PR  
PT  
PVI  
PI  
R  
RT.  
RD  
RCP  
REQ'D  
ROW, R/W  
S  
SE  
SW  
SCH  
SH  
SPEC  
SF  
SY  
ST  
STA  
STD  
SUR  
SYM  
TOE  
TOB  
THK  
TEMP  
TYP  
VERT  
W.W.  
W/  
W/O

ACRE  
APPROXIMATE  
BENCH MARK  
BOTTOM  
CATCH BASIN  
CONSTRUCTION JOINT  
CORRUGATED METAL PIPE  
CORRUGATED PLASTIC PIPE  
CLEANOUT  
CUBIC FEET  
CUBIC YARD  
CUBIC INCH  
CENTER LINE  
CHAIN LINK FENCE  
CONCRETE  
CONTINUOUS  
CENTERS  
CHARLOTTE COUNTY UTILITIES DEPARTMENT  
DIAMETER  
DIMENSION  
DISTANCE  
DRAWING  
EAST  
ELEVATION  
EQUIPMENT  
ELLIPTICAL REINFORCED CONCRETE PIPE  
EXISTING  
FLORIDA DEPARTMENT OF TRANSPORTATION  
FOUND  
FINISH  
FEET  
GRADE  
HORIZONTAL  
HIGH POINT  
INVERT  
LINEAL FEET  
LEFT  
MATCH EXISTING  
MAXIMUM  
MITERED END SECTION  
MANUFACTURER  
MINIMUM  
MISCELLANEOUS  
MULTI-USE PATH  
NORTH  
NORTHEAST  
NORTHWEST  
NOT TO SCALE  
NOMINAL  
OFFSET  
ON CENTERS  
ON CENTER EACH WAY  
OUTSIDE DIAMETER  
POUNDS PER CUBIC FOOT  
POUNDS PER SQUARE FOOT  
POUNDS PER SQUARE INCH  
POLYVINYL CHLORIDE  
PAVEMENT  
POINT OF CURVATURE  
POINT OF COMPOUND CURVATURE  
PROPOSED GRADE LINE  
PROPERTY LINE  
PROPOSED  
POINT OF TANGENCY  
POINT OF VERTICAL INTERSECTION  
POINT OF INTERSECTION  
RADIUS  
RIGHT  
ROAD  
REINFORCED CONCRETE PIPE  
REQUIRED  
RIGHT OF WAY  
SOUTH  
SOUTHEAST  
SOUTHWEST  
SCHEDULE  
SHEET  
SPECIFICATION  
SQUARE FEET  
SQUARE YARD  
STREET  
STATION  
STANDARD  
SURFACE  
SYMMETRICAL  
TOE OF SLOPE  
TOP OF BANK  
THICK  
TEMPORARY  
TYPICAL  
VERTICAL  
WATERWAY  
WITH  
WITHOUT

SYMBOLS

WOOD UTILITY POLE

UTILITY POLE ANCHOR

STREET SIGN

DRAINAGE FLOW DIRECTION  
ARROW

EXISTING SPOT ELEVATION

PROPOSED SPOT ELEVATION

HATCH PATTERNS

EXISTING ASPHALT PAVEMENT

EXISTING DIRT DRIVE

EXISTING CONCRETE

PROPOSED CONCRETE SIDEWALK

NOTE:  
HATCH PATTERNS ARE FOR ILLUSTRATIVE PURPOSES  
ONLY, ACTUAL HATCH PATTERNS ON DRAWING MAY  
VARY IN SCALE & ANGLE

LINETYPES

PROPERTY LINE

RIGHT-OF-WAY LINE

PROJECT LIMITS

CENTER LINE

OVERHEAD UTILITY LINES

FENCE LINE

SILT FENCE

CONTOUR LINES  
AND ELEVATION

CONSTRUCTION NOTES:

1. CONCRETE SIDEWALKS SHALL BE CONSTRUCTED PER F.D.O.T. INDEX NO. 522-001 (FY 2022-23) AND F.D.O.T. STANDARD SPECIFICATION NO. 522 EXCEPT FOR CURB CUT RAMP RUNS WHICH SHALL BE FINISHED IN ACCORDANCE WITH INDEX NO. 522-002 EXCEPT AMENDMENTS TO DESIGN PER CHARLOTTE COUNTY PUBLIC WORKS – ENGINEERING DIVISION. CLASS I CONCRETE, 3,000 PSI @ 28 DAYS SHALL BE USED FOR ALL SIDEWALKS AND CONCRETE STRUCTURES, SIDEWALKS TO RECEIVE FIBERMESH REINFORCING.

2. THERE SHALL BE NO CHANGE OR DEVIATION OF THESE PLANS OR SPECIFICATIONS UNLESS PRIOR WRITTEN APPROVAL FROM THE ENGINEER IS OBTAINED.

3. THE CONTRACTOR SHALL NOTIFY THE ENGINEER IMMEDIATELY IF AND WHEN A POSSIBLE ERROR IS FOUND IN THE PLANS OR STAKED ALIGNMENT AND/OR GRADES. THE ENGINEER MAY ACCEPT, REVISE TO ACCOMMODATE CONDITIONS, OR REJECT THE FACILITY BEING CONSTRUCTED. IT IS IMPERATIVE THAT THE CONTRACTOR NOTIFY THE ENGINEER OF THESE SITUATIONS AS SOON AS POSSIBLE, PRIOR TO EXPENDITURE OF FUNDS.

4. EROSION AND SEDIMENT CONTROL BEST MANAGEMENT PRACTICES SHALL BE OBSERVED DURING CONSTRUCTION BY THE CONTRACTOR. THE METHODS WHICH SHOULD BE USED INCLUDE BUT ARE NOT LIMITED TO:  
A. THE CONTRACTOR SHALL BE RESPONSIBLE FOR ANY SILTATION CAUSED BY CONSTRUCTION ACTIVITY ENTERING THE STORM DRAINAGE SYSTEM, BOTH ON-SITE AND OFF-SITE. THE CONTRACTOR SHALL UTILIZE SAND BAGS AND SYNTHETIC BALES OR OTHER EROSION CONTROL METHODS TO CONTROL EROSION.  
B. THE CONTRACTOR SHALL BE RESPONSIBLE FOR THE CONTROL OF DUST AT ALL TIMES DURING CONSTRUCTION BY UTILIZING WATER TRUCKS, ANTI-DRAFT FENCING, OR OTHER APPROVED METHODS, AND BY COVERING OPEN BODIED TRUCKS TRANSPORTING DEBRIS.  
C. EROSION CONTROL MEASURES SHALL BE PROVIDED PER F.D.O.T. EROSION AND SEDIMENT CONTROL DESIGNER AND REVIEWER MANUAL AS APPLICABLE.

5. THE CONTRACTOR SHALL BE RESPONSIBLE FOR MAINTENANCE, INCLUDING MOWING AND CLEANUP UNTIL THE PROJECT IS ACCEPTED. IF, BY THEN, THE GROWTH IS NOT FIRMLY ESTABLISHED, THE CONTRACTOR WILL CONTINUE TO BE RESPONSIBLE FOR MAINTENANCE, UNTIL THE GROWTH IS ESTABLISHED.

6. THE CONTRACTOR SHALL USE EXTREME CARE NOT TO DAMAGE THE ROOT SYSTEMS OF TREES AND OTHER LANDSCAPE FEATURES WHICH ARE TO BE SAVED, AND/OR SALVAGED, FOR RESTORATION PURPOSES. NO EQUIPMENT, SUPPLIES, OR VEHICLES SHALL BE STORED WITHIN THE DRIP LINE OF TREES TO REMAIN AND BE PRESERVED. SEE SPECS FOR ADDITIONAL INFORMATION.

7. AS PART OF CLEARING AND GRUBBING, ALL DEBRIS IS TO BE REMOVED FROM THE PROJECT SITE AND SALVAGED BY THE CONTRACTOR OR TRANSPORTED TO A LEGAL DISPOSAL AREA, AT HIS EXPENSE. NO BURNING SHALL BE ALLOWED ON THE PROJECT SITE.

8. IT IS THE RESPONSIBILITY OF THE CONTRACTOR TO EXAMINE THE JOB SITE, REVIEW THE CONSTRUCTION AND DESIGN REQUIREMENTS, PROJECT PERMITS, CONDITIONS, STIPULATIONS, AND RESTRICTIONS AS NECESSARY TO FAMILIARIZE HIMSELF WITH THE ENTIRE PROJECT PRIOR TO BIDDING.

9. THE COUNTY SHALL SECURE AN INDEPENDENT TESTING LABORATORY DURING CONSTRUCTION TO PERFORM SUCH TESTING AS NEEDED TO CERTIFY THAT THE MATERIAL AND STRUCTURAL COMPONENT SPECIFICATIONS NOTED HAVE BEEN MET. THE CONTRACTOR SHALL ALSO SUBMIT, FOR REVIEW AND APPROVAL, TO THE ENGINEER OF RECORD, A MINIMUM OF FOUR COPIES OF SHOP DRAWINGS AND/OR MATERIAL CERTIFICATIONS FOR ALL MATERIALS PRIOR TO ORDERING SAME FOR THE PROJECT.

10.ANY LAND DISTURBED BY CONSTRUCTION SHALL BE GRADED FOR POSITIVE DRAINAGE, STABILIZED, AND SODDED. USE ARGENTINE BAHIA OR LIKE KIND AND CONFORM TO FDOT SECTION 981. SOD ALONG EDGES OF SIDEWALKS SHALL BE ONE INCH (1") BELOW FINISHED PAVEMENT GRADE

11.ALL CONSTRUCTION SHALL COMPLY WITH ALL FEDERAL AND STATE A.D.A. (AMERICANS WITH DISABILITIES ACT) STANDARDS.

12.FILL MATERIAL SHALL BE COMPACTED TO CHARLOTTE COUNTY RIGHT-OF-WAY RESTORATION POLICY AND THE APPLICABLE F.D.O.T. SPECIFICATIONS, 98% MODIFIED PROCTOR DENSITY IN SIX (6) INCH LIFTS MAXIMUM – UNLESS SPECIFICATIONS ALLOW OTHERWISE.

13.FILL MATERIAL UTILIZED SHALL BE TYPE A-3.

14.CONTRACTOR TO ADHERE TO THE GUIDELINES OF THE FLORIDA "TRENCH AND SAFETY ACT".

15.PLAN GRADES, ON GRASSED AREAS, INDICATE TOP OF SOD.

16.REMOVAL OF PROTECTED TREE SPECIES SHALL REQUIRE A TREE REMOVAL PERMIT.

GENERAL NOTES:

1. ALL SURVEY INFORMATION WAS OBTAINED FROM A LICENSED FLORIDA PROFESSIONAL SURVEYOR AND MAPPER AND UTILIZED AS SUPPORTING DATA IN THE PRODUCTION OF DESIGN PLANS AND FOR CONSTRUCTION ON SUBJECT PROJECT. THE PROFESSIONAL SURVEYOR AND MAPPER OF RECORD IS:  
BANKS ENGINEERING  
PROFESSIONAL ENGINEERS, PLANNERS, & LAND SURVEYORS  
4161 TAMiami TRAIL – BLDG 5 UNIT 501  
PORT CHARLOTTE, FLORIDA 33952  
ENGINEERING LICENSE #EB 6469  
SURVEY LICENSE #LB 6690

2. ELEVATIONS ARE REFERENCED TO NORTH AMERICAN VERTICAL DATUM (N.A.V.D.) OF 1988.

3. WRITTEN DIMENSIONS TO TAKE PRECEDENCE OVER SCALE.

4. CALL OUT FOR FDOT INDEX COMPONENTS SHALL BE CONSIDERED THE FY 2022-23 STANDARD PLANS FOR ROAD AND BRIDGE CONSTRUCTION, UNLESS NOTED OTHERWISE.

5. THE LOCATION OF EXISTING PAVEMENT, VEGETATION, AND MISCELLANEOUS IMPROVEMENTS ARE APPROXIMATE ONLY. THE EXACT LOCATIONS SHALL BE FIELD VERIFIED BY THE CONTRACTOR. CONTRACTOR IS RESPONSIBLE TO CONTACT ALL UTILITY COMPANIES TO COORDINATE WORK.

6. EXISTING FACILITIES SHALL BE RESTORED TO A CONDITION EQUIVALENT OR BETTER TO THAT WHICH EXISTED PRIOR TO COMMENCING CONSTRUCTION, AT NO ADDITIONAL COST TO OWNER.

7. ALL CONSTRUCTION SHALL BE IN ACCORDANCE WITH STATE OF FLORIDA, DEPARTMENT OF TRANSPORTATION, ROADWAY AND TRAFFIC DESIGN STANDARDS, (FY 2022-23), CHARLOTTE COUNTY DEVELOPMENT STANDARDS AND SPECIFICATIONS.

8. CONTRACTOR SHALL NOTIFY THE APPROPRIATE AGENCIES A MINIMUM OF 72 HOURS PRIOR TO ALL REQUIRED INSPECTIONS.

9. CONTRACTOR TO PROVIDE SILT FENCE, STAKED SYNTHETIC BALES, TURBIDITY BARRIERS AND OTHER APPROPRIATE MEASURES TO EFFECT THE FILTRATION OF SURFACE WATER FLOWS AND TO PROVIDE EROSION PROTECTION DURING CONSTRUCTION ACTIVITIES. PROTECTION IS TO BE MAINTAINED DURING THE CONSTRUCTION PERIOD UNTIL DISTURBED SOILS HAVE BEEN STABILIZED WITH GRASS OR SUITABLE EROSION PROTECTION TREATMENT. CONSTRUCTION AND STAGING AREAS WILL BE MAINTAINED IN A FASHION TO PREVENT EROSION OR TURBIDITY PROBLEMS. CONTRACTOR WILL MEET ALL LOCAL, STATE, AND FEDERAL WATER QUALITY REGULATIONS AND PERMIT REQUIREMENTS. ALL DISTURBED AREAS TO BE SODDED AS CONSTRUCTION IS COMPLETED.

10.EXISTING OFF-SITE DRAINAGE PATTERNS SHALL BE MAINTAINED DURING CONSTRUCTION.

11.CONTRACTOR SHALL RETAIN, ON THE WORK SITE, COPIES OF ANY PERMITS NECESSARY FOR CONSTRUCTION.

12.CONTRACTOR SHALL PROMPTLY REPORT ALL FIELD CHANGES TO THE ENGINEER.

13.CONTRACTOR SHALL CLEAR ALL EXCAVATION AND FILL AREAS; ACTUAL LIMITS OF CLEARING SHALL BE DETERMINED IN THE FIELD BY OWNER OR ENGINEER.

14.SITE GRADES MAY BE ADJUSTED IN FIELD BY ENGINEER.

15.THE CONTRACTOR SHALL PREPARE AND PROVIDE AS-BUILT DRAWINGS IN COMPLIANCE TO ALL AGENCIES GOVERNING PERMITS, CERTIFICATION, AND TRANSFER TO OPERATIONS STANDARDS AND SPECIFICATIONS, AS REQUIRED BY TECHNICAL SPECIFICATIONS INCLUDING ALL SIGNED & SEALED PLANS AND ELECTRONIC COPIES, WHICH SHALL BE DELIVERED TO THE ENGINEER.

16.CONTRACTOR IS REQUIRED TO OBTAIN FROM THE ENGINEER AND OWNER WRITTEN APPROVAL FOR ANY DEVIATIONS FROM THE PLANS AND/OR SPECIFICATIONS. THE CONTRACTOR WILL BE RESPONSIBLE FOR ANY COST ASSOCIATED WITH OBTAINING APPROVAL FROM ANY PERMITTING AGENCY FOR PROPOSED DEVIATIONS AND WILL SUBMIT ELECTRONIC COPIES AS WELL AS SIGNED & SEALED HARD COPIES TO THE ENGINEER AND OWNER.

17.ALL CONSTRUCTION DEBRIS AND OTHER WASTE MATERIAL SHALL BE DISPOSED OF OFF SITE IN ACCORDANCE WITH APPLICABLE REGULATION.

FLORIDA DEPARTMENT OF TRANSPORTATION  
STANDARD DETAIL NOTES:

ALL REFERENCES TO FLORIDA DEPARTMENT OF TRANSPORTATION STANDARD INDEXES ARE FROM THE LATEST EDITION OF THE FLORIDA DEPARTMENT OF TRANSPORTATION (FDOT) STANDARD PLANS FOR ROADWAY CONSTRUCTION. THESE INDEXES WERE PREPARED BY OR AT THE DIRECTION OF FDOT AND WERE FURNISHED TO JOHNSON ENGINEERING, INC.

THE DESIGN STANDARDS REFERENCED WITHIN THIS PLAN SET HAVE BEEN INCORPORATED HEREIN VERBATIM AS SET FORTH WITHIN THE ABOVE REFERENCED FDOT DESIGN STANDARDS.

NOTICE TO ALL CONTRACTORS

IT'S THE LAW IN FLORIDA  
2 BUSINESS DAYS BEFORE  
YOU DIG  
CALL SUNSHINE  
1-800-432-4770

STATE, COUNTIES & CITIES  
ARE "NOT" PART OF THE  
ONE CALL SYSTEM. THEY  
MUST BE CALLED  
INDIVIDUALLY.

BEFORE  
YOU DIG  
STOP  
CALL SUNSHINE  
1-800-432-4770  
AVOID DAMAGE TO  
UNDERGROUND FACILITIES

JOHNSON  
ENGINEERING

JOHNSON ENGINEERING, INC.  
17833 MURDOCK CIRCLE  
PORT CHARLOTTE, FLORIDA 33948  
PHONE (941) 625-9919  
E.B. #642 & L.B. #642

CHRISTOPHER D. BEERS, PE  
FL License No. 64594

Charlotte County Board of  
County Commissioners  
Charlotte County, Florida

Tippecanoe II  
Environmental Park  
Walking Path Design

REVISIONS

NO.	DESCRIPTION	DATE

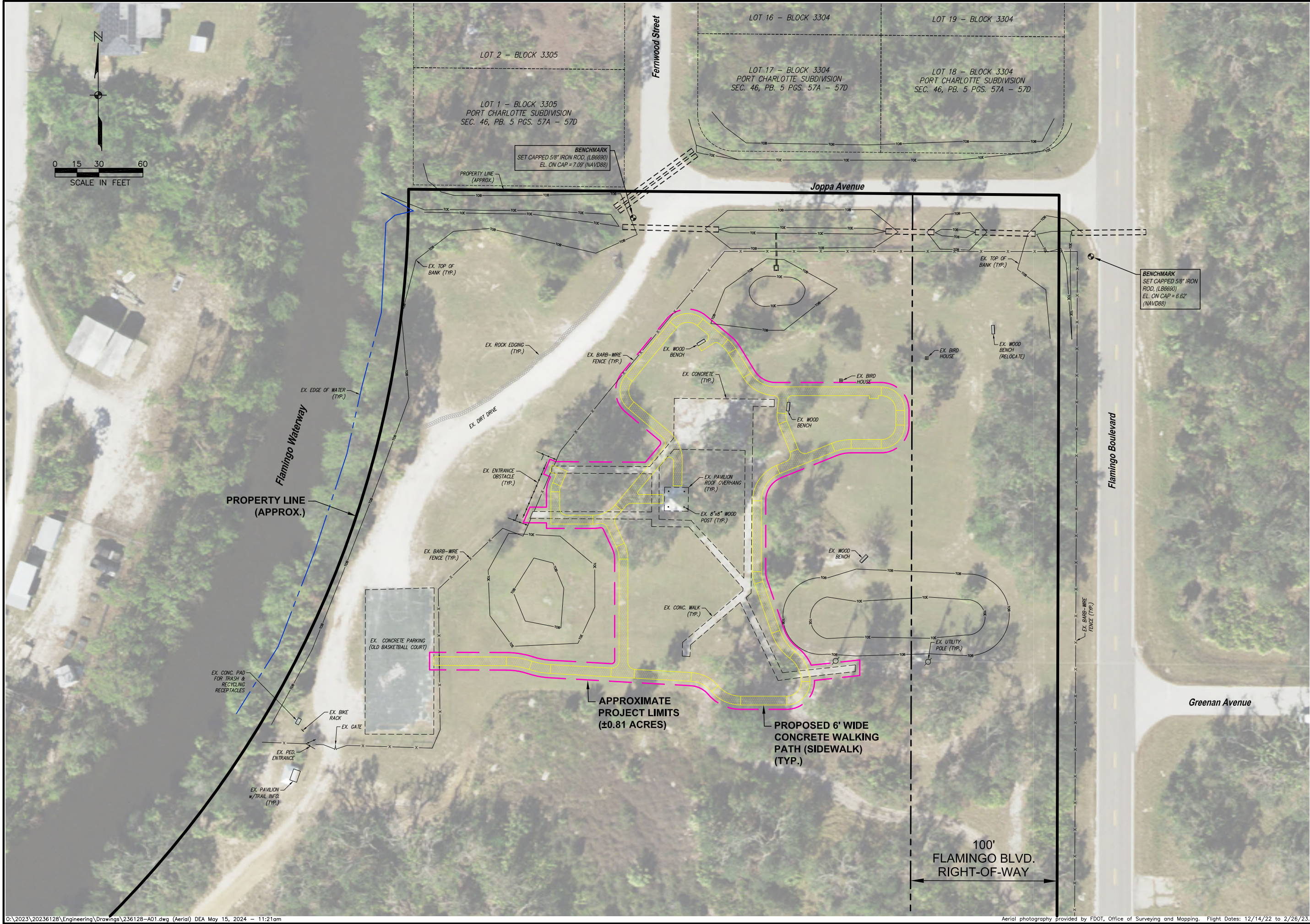
DATE: May, 2024  
PROJECT NO. 20236128  
FILE NO. 14-20-21  
SCALE: AS NOTED

GENERAL NOTES,  
ABBREVIATIONS  
AND LEGENDS

SHEET NUMBER  
C2

O:\2023\20236128\Engineering\Drawings\236128 ABBR.dwg (2) DEA May 15, 2024 – 9:12am

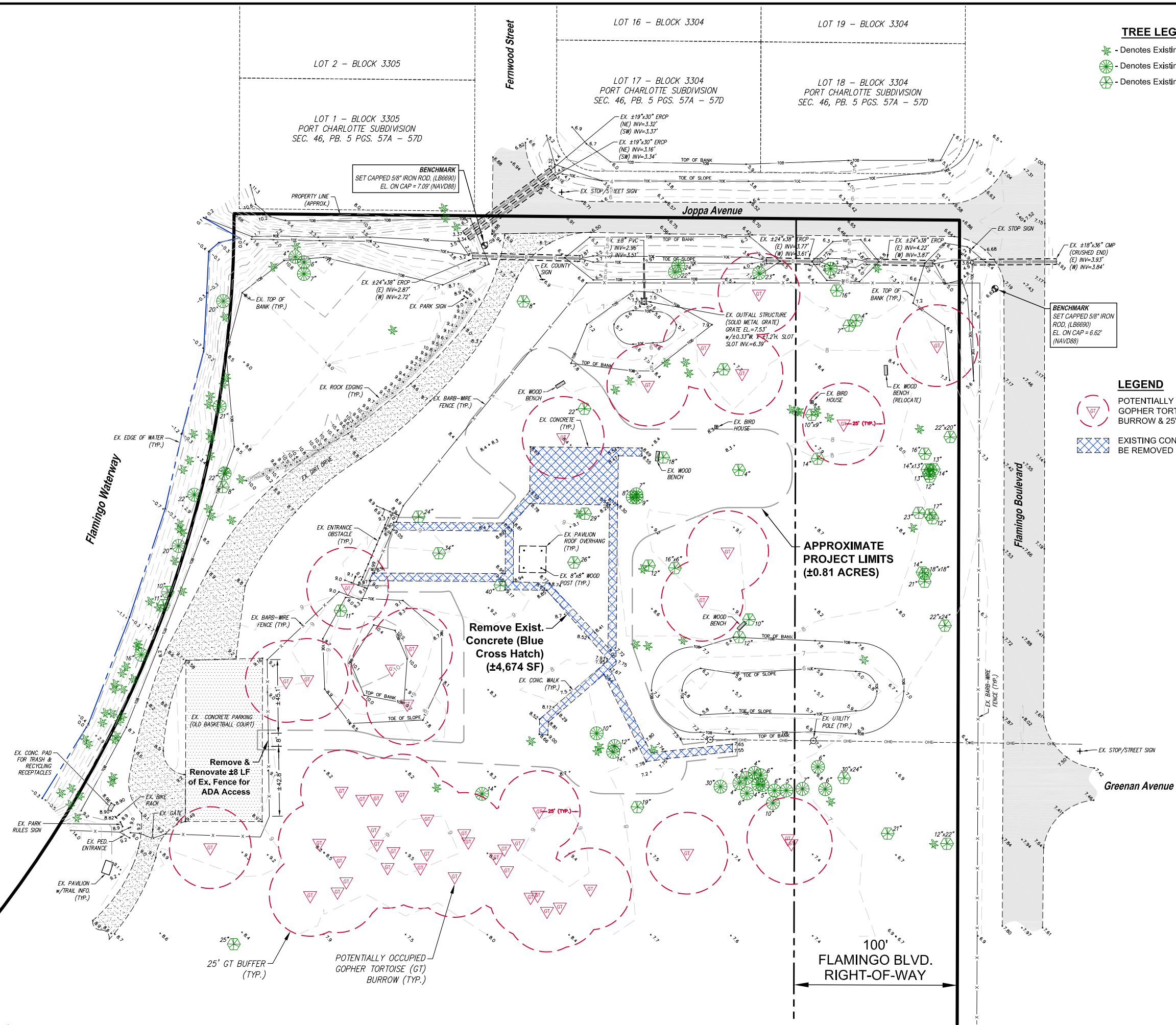









NO.	DESCRIPTION	DATE

DATE:	May, 2024
PROJECT NO.	20236128
FILE NO.	14-20-21
SCALE:	As noted.





-  - Denotes Existing Palm Tree
-  - Denotes Existing Pine Tree
-  - Denotes Existing Oak Tree

-  POTENTIALLY OCCUPIED GOPHER TORTOISE BURROW & 25' BUFFER
  -  EXISTING CONCRETE TO BE REMOVED (±4,674 SF)

**Remove Exist. Concrete (Blue Cross Hatch)**  
**(±4,674 SF)**

Remove &  
Renovate ±8 LF  
of Ex. Fence for  
ADA Access

**APPROXIMATE  
PROJECT LIMITS  
(±0.81 ACRES)**

25' GT BUFFER—  
(TYP.)

POTENTIALLY OCCUPIED -  
GOPHER TORTOISE (GT)  
BURROW (TYP.)

100'  
FLAMINGO BLVD.  
RIGHT-OF-WAY

Charlotte County Board of  
County Commissioners  
Charlotte County, Florida

# Tippecanoe II Environmental Park Walking Path Design

[illegible]

DATE:	May, 2024
PROJECT NO.	20236128
FILE NO.	14-20-21
SCALE:	As noted.

EXISTING  
CONDITIONS &  
DEMOLITION  
PLAN

SHEET NUMBER

C4



## PROJECT COVERAGE

## IMPERVIOUS AREAS

### TREE LEGEND

- JOHNSON**  
ENGINEERING

CHRISTOPHER D. BEERS, PE  
FL License No. 64594

Charlotte County Board of  
County Commissioners  
Charlotte County, Florida

# Tippecanoe II Environmental Park Walking Path Design

[illegible]

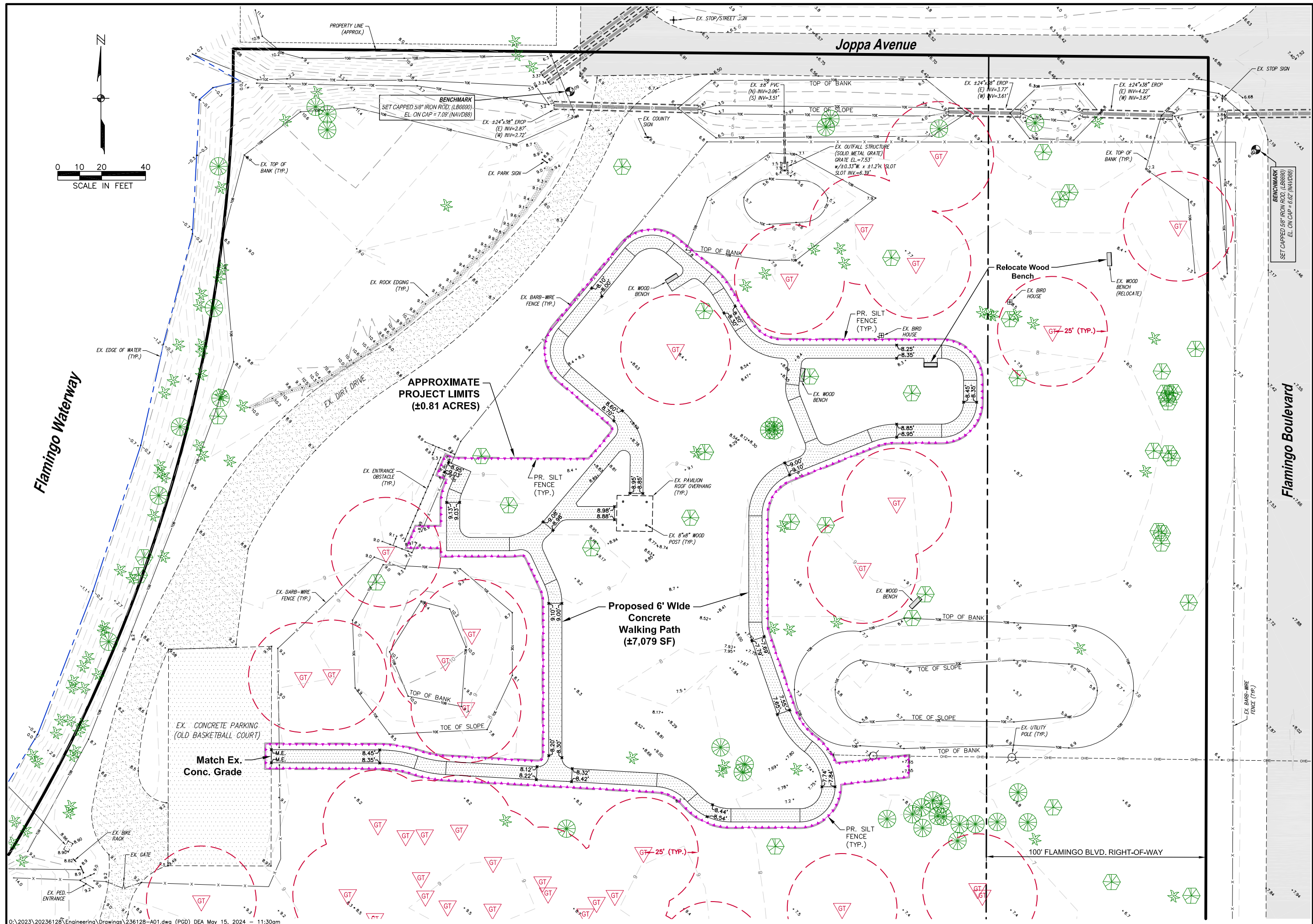
DATE:	May, 2024
PROJECT NO.	20236128
FILE NO.	14-20-2
SCALE:	As noted

## SITE PLAN

SHEET NUMBER

C5





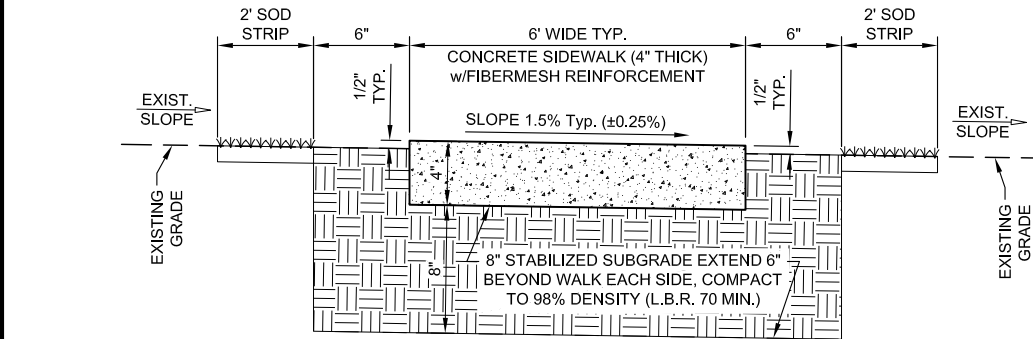
Charlotte County Board of  
County Commissioners  
Charlotte County, Florida

# Tippecanoe II Environmental Park Walking Path Design

[illegible]PAVING, GRADING,  
& DRAINAGE PLAN

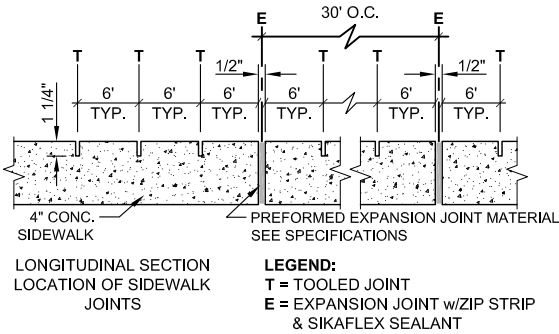
SHEET NUMBER

C6

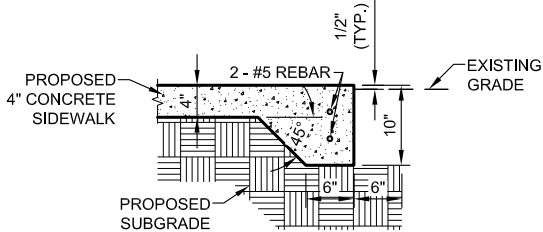


- NOTE**
1. CONCRETE TO BE FDOT CLASS I, 3,000 P.S.I. MINIMUM, WITH FIBERMESH REINFORCEMENT AND HAVE EXPANSION AND CONTRACTION JOINTS PER SPECIFICATIONS.
  2. INSPECTION IS REQUIRED ONCE THE SIDEWALK IS FORMED.
  3. 2' SOD STRIP TO BE PLACED FOR POSITIVE DRAINAGE.

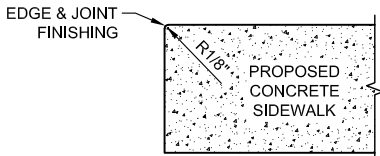
**TYPICAL SIDEWALK**  
NOT TO SCALE



**EXPANSION & TOOLED JOINTS DETAIL**  
NOT TO SCALE

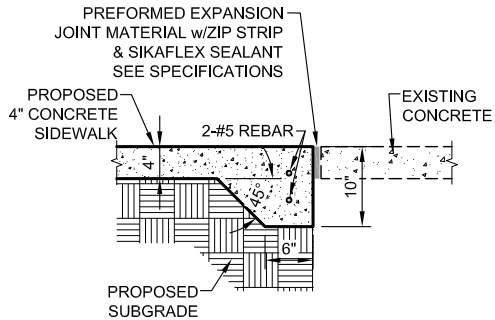


**END OF SIDEWALK DETAIL**  
NOT TO SCALE



ALL CONCRETE SIDEWALK EDGES, INCLUDING THOSE AT FORMED JOINTS, SHALL BE FINISHED WITH AN EDGER HAVING A RADIUS OF 3 mm (1/8 INCH). TRAVERSE JOINT SHALL BE EDGED BEFORE BROOMING, AND THE BROOMING SHALL ELIMINATE THE FLAT SURFACE LEFT BY THE SURFACE FACE OF THE EDGER. CORNERS AND EDGES WHICH HAVE CRUMBLD AND AREAS WHICH LACK SUFFICIENT MORTAR FOR PROPER FINISHING SHALL BE CLEANED AND FILLED SOLIDLY WITH A PROPERLY PROPORTIONED MORTAR MIIXTURE AND THEN FINISHED.

**FINISHING EDGE OF CONCRETE SIDEWALK DETAIL**  
NOT TO SCALE



**SIDEWALK CONNECTION TO EXISTING CONCRETE DETAIL**  
NOT TO SCALE

NO.	DESCRIPTION	DATE

DATE:	May, 2024
PROJECT NO.	20236128
FILE NO.	14-20-21
SCALE:	AS SHOWN



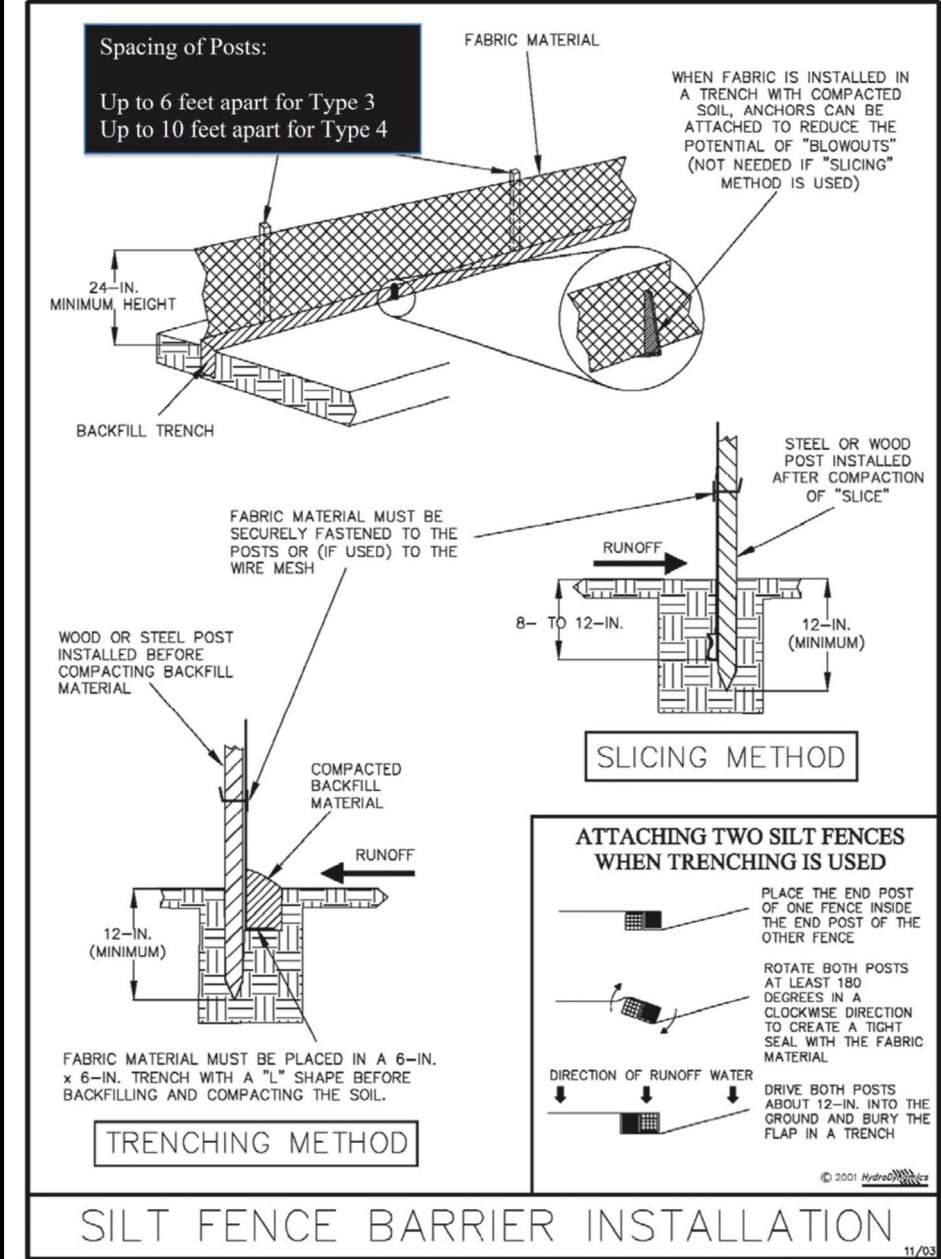


Figure V-2: Illustration of a Silt Fence Barrier

Permission is given by HydroDynamics Incorporated to copy and reproduce this detail

V-7

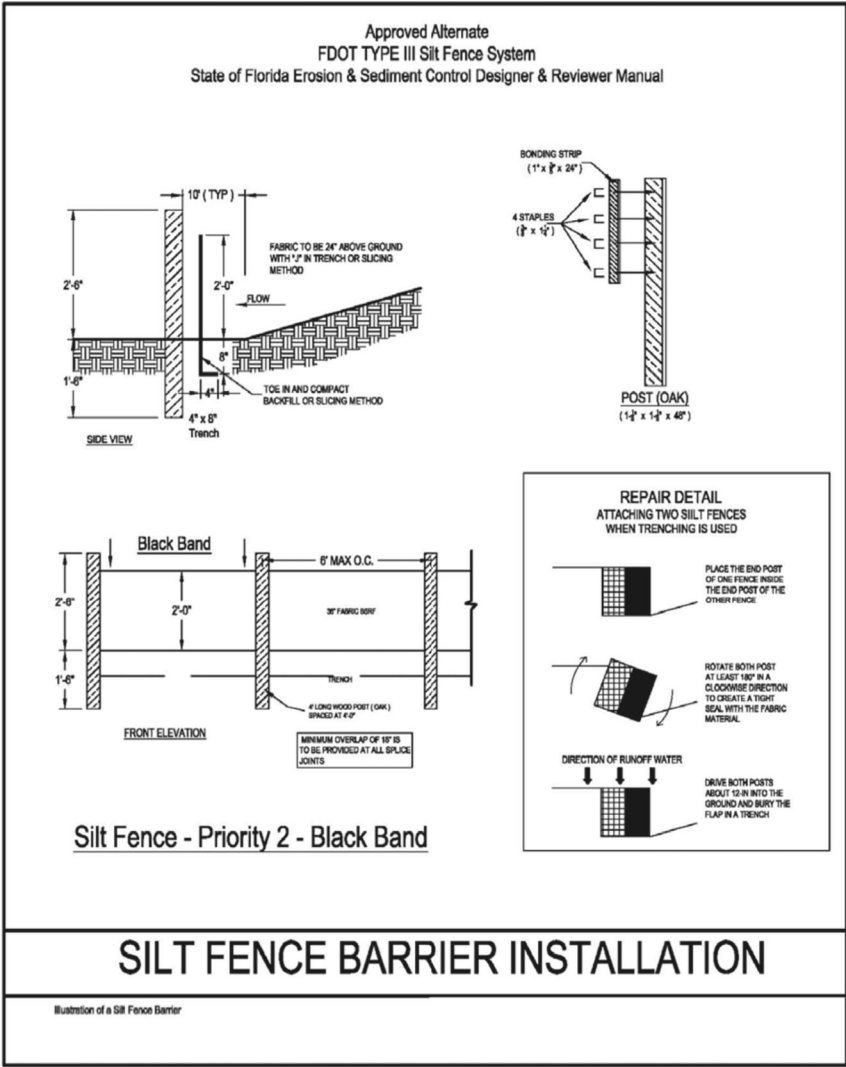


Figure V-3: Illustration of Silt Fence Priority 2 – Black Band

V-10

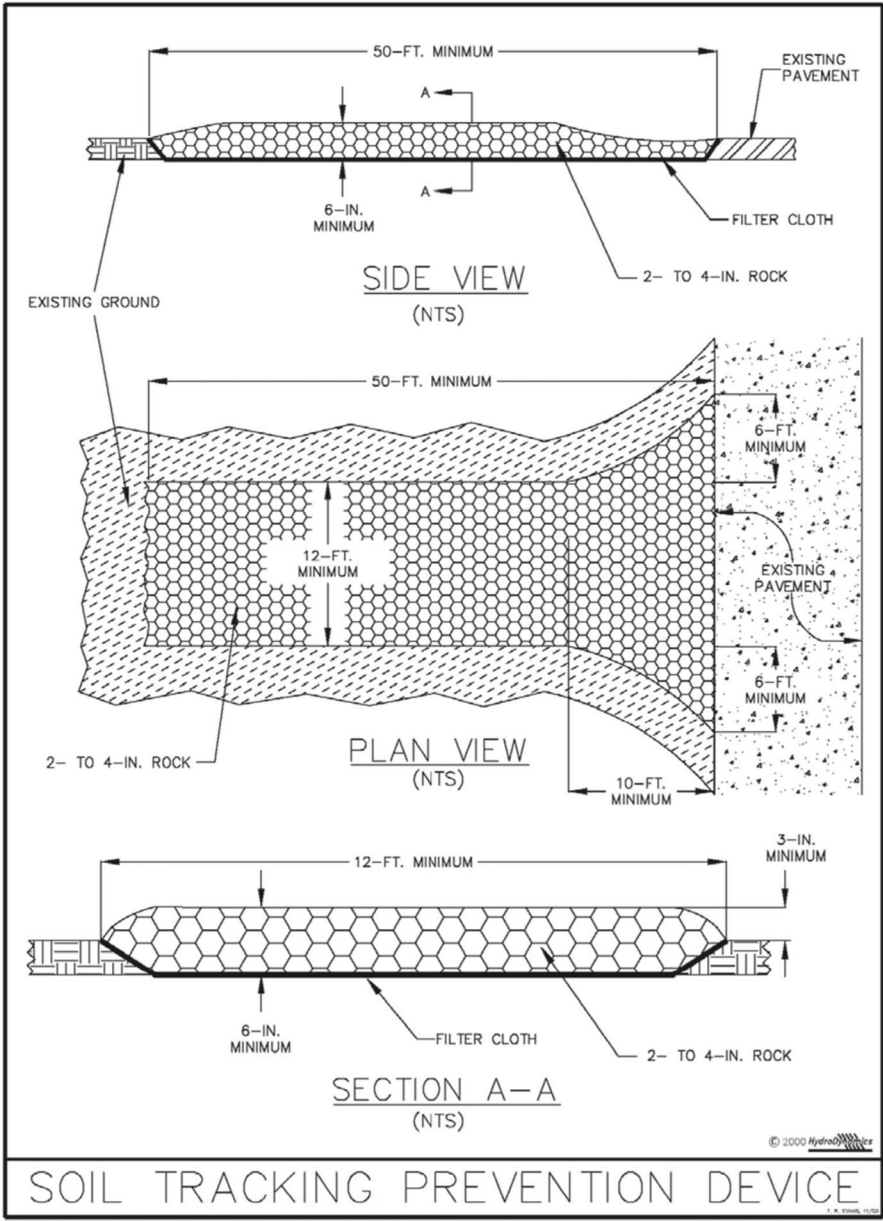


Figure V-19: Illustration of a Soil Tracking Prevention Device

Permission is given by HydroDynamics Incorporated to copy and reproduce this detail

V-44

THIS DRAWING CONTAINS DETAILS DESIGNED BY, STANDARD TO, AND FURNISHED BY  
FLORIDA DEPARTMENT OF TRANSPORTATION  
SAID DETAILS WERE NOT DESIGNED BY JOHNSON ENGINEERING.

SEE THE FLORIDA DEPARTMENT OF TRANSPORTATION WEBSITE FOR  
FURTHER INFORMATION, DETAILS AND THE STATE OF FLORIDA EROSION  
AND SEDIMENT CONTROL DESIGNER & REVIEWER MANUAL.

REVISIONS	DATE
DESCRIPTION	
NO.	

DATE:	May, 2024
PROJECT NO.	20236128
FILE NO.	14-20-21
SCALE:	AS SHOWN