

A large, stylized graphic in the background features a yellow sun with rays and several green leaves of varying shades, all set against a white background.

Z-26-12 (Quasi-Judicial)

TDU-26-01 (Quasi-Judicial)

(Adoption Hearing BCC Land Use Meeting 05-26-2026)

Nina Grigorov,

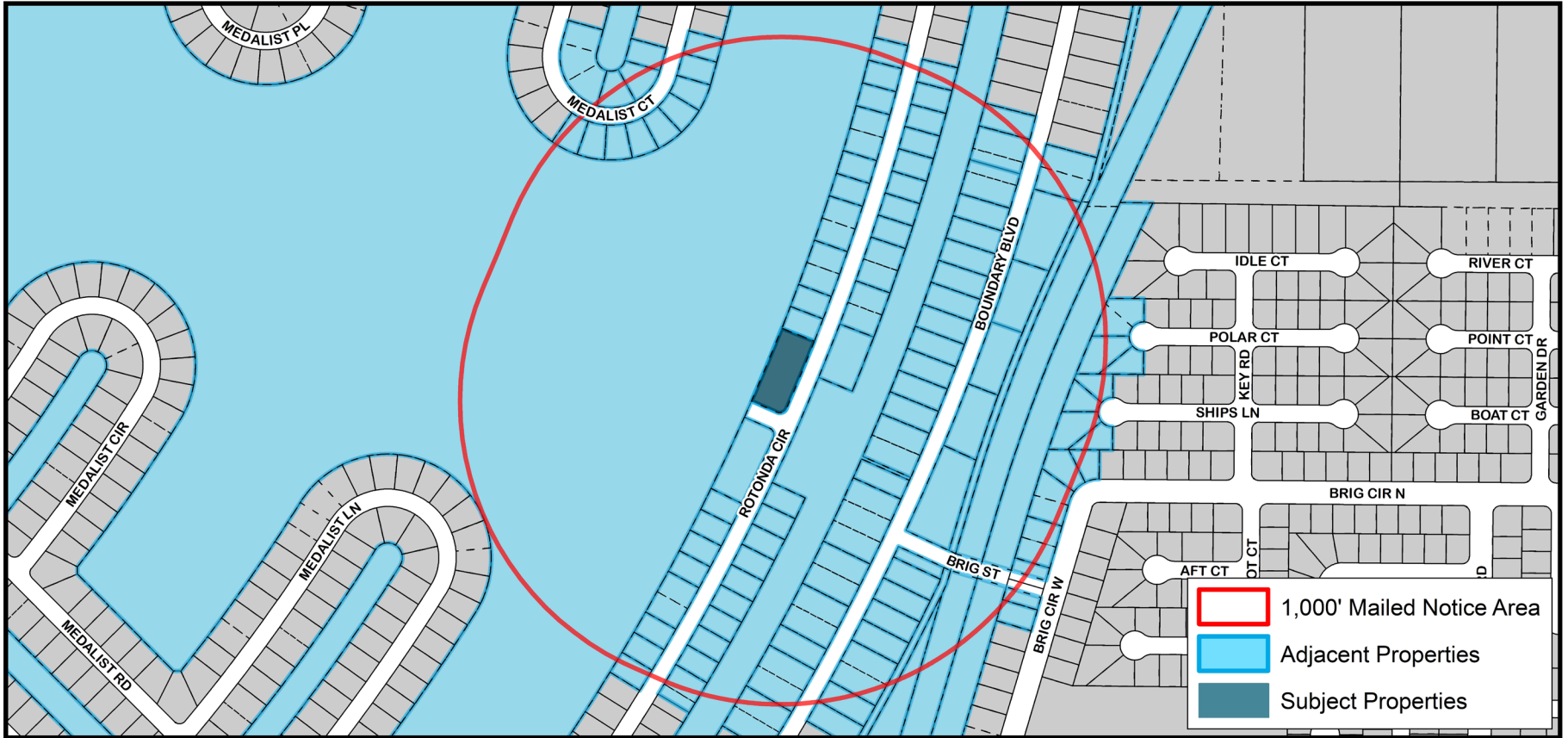
Trustee of the Nina Grigorov Living Trust



CHARLOTTE COUNTY
FLORIDA

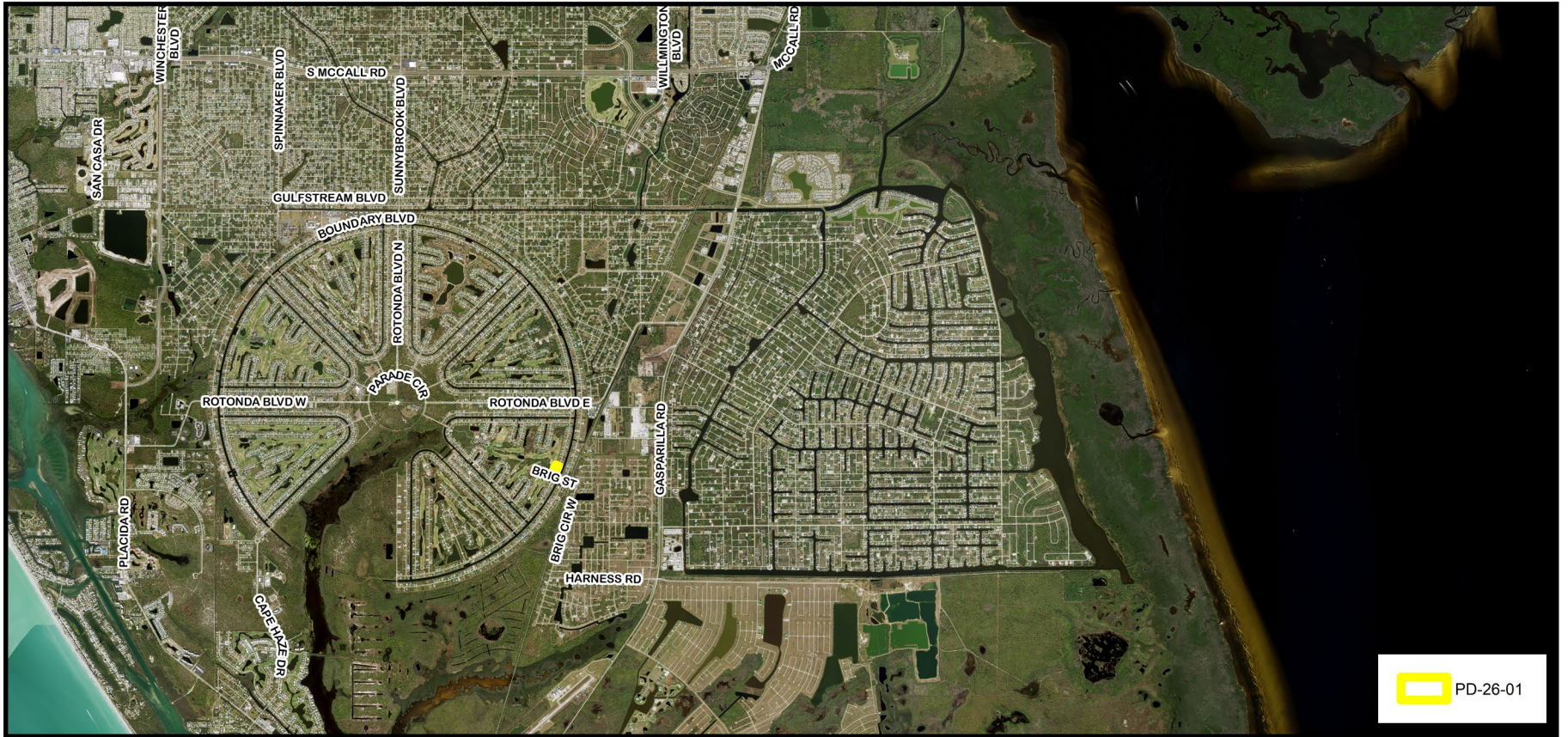
Proposed Changes

- A rezoning from Commercial General (CG) to Residential Single-family 3.5 (RSF-3.5) to correct an inconsistency between the Future Land Use Map designation and the zoning district
- A request to transfer one density unit to the subject property
- The subject property is located in Commission District III.



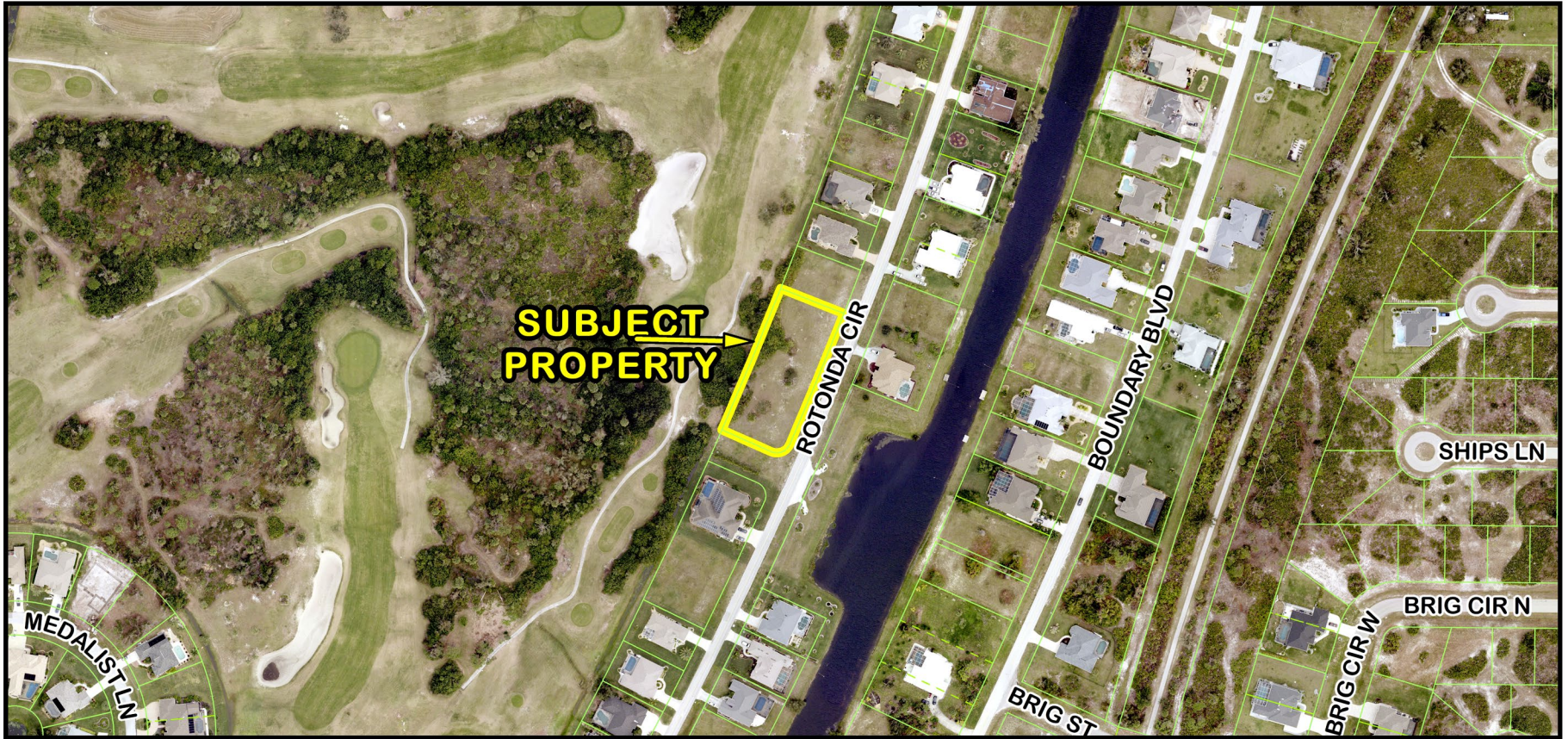
Z-26-12 and TDU-26-01 1,000' Mailed Notice Map

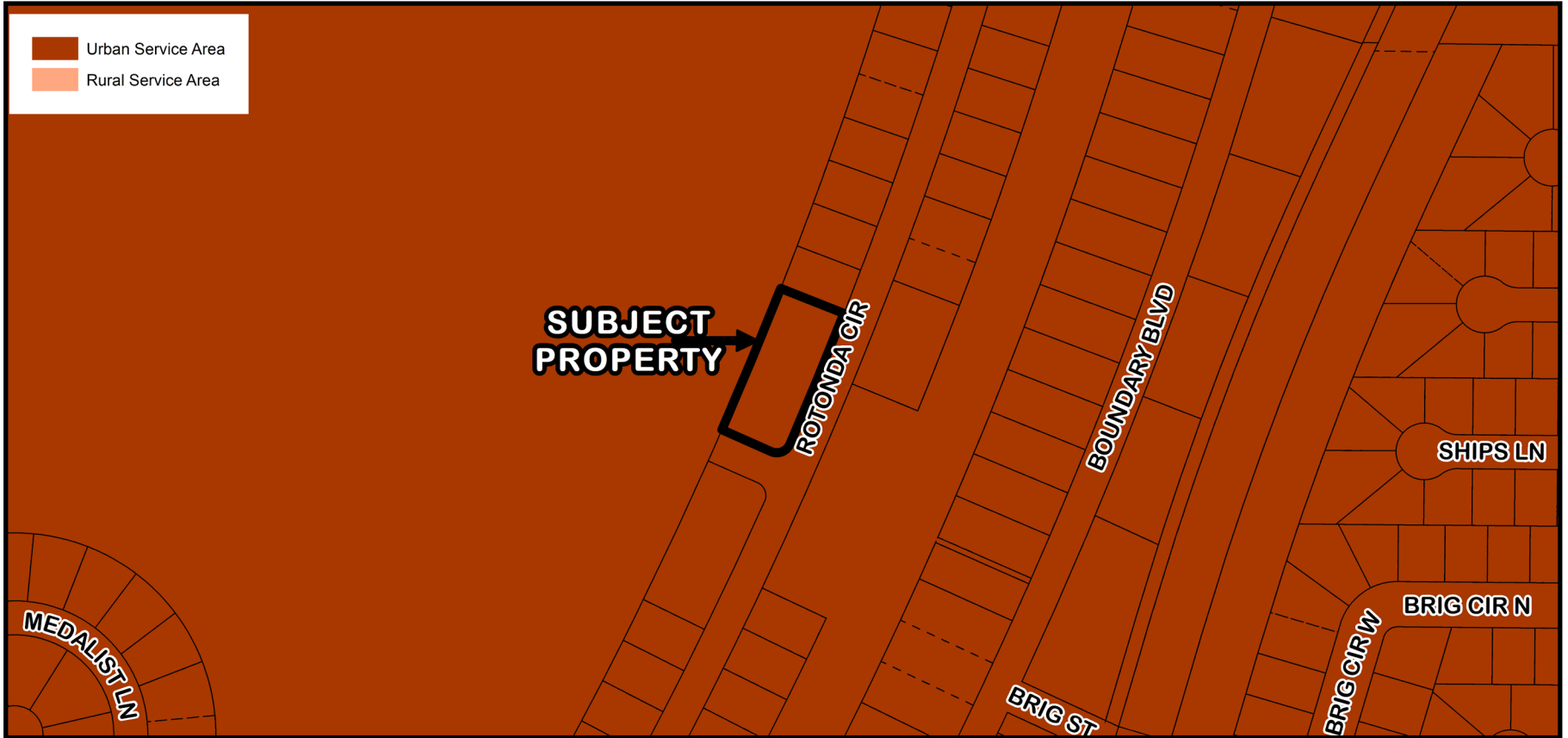




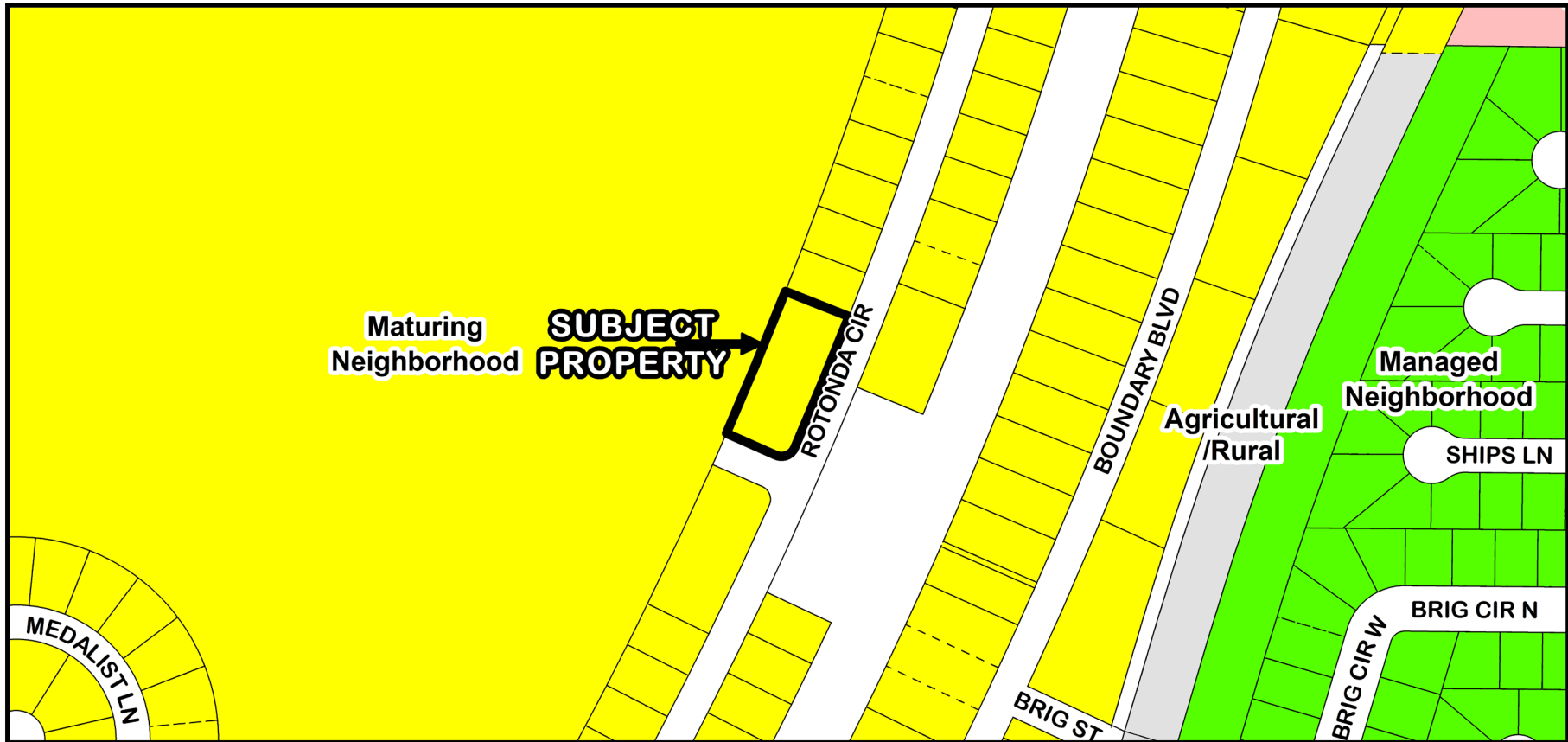
PD-26-01

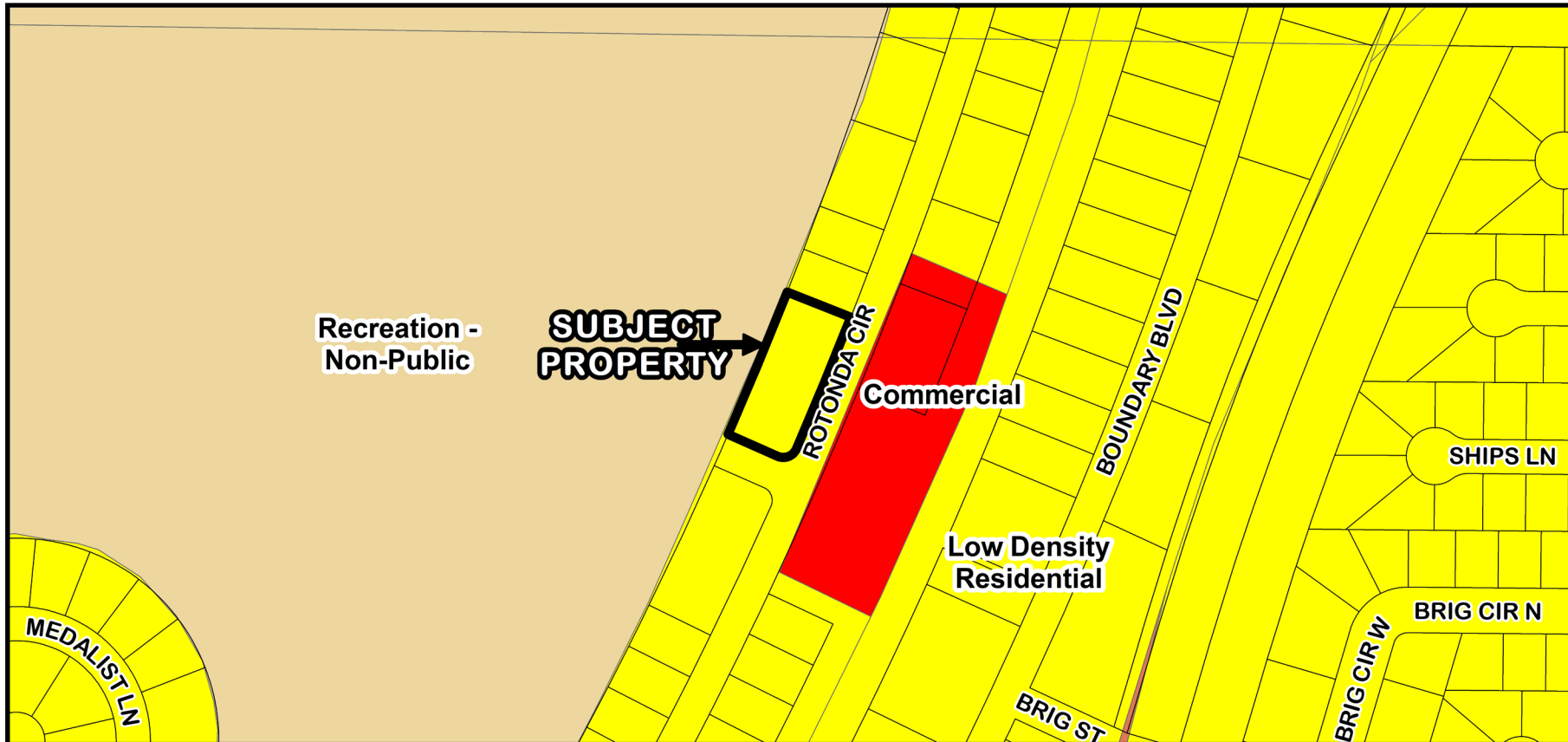
Z-25-12 and TDU-26-01 Area Image (Mid-Range)



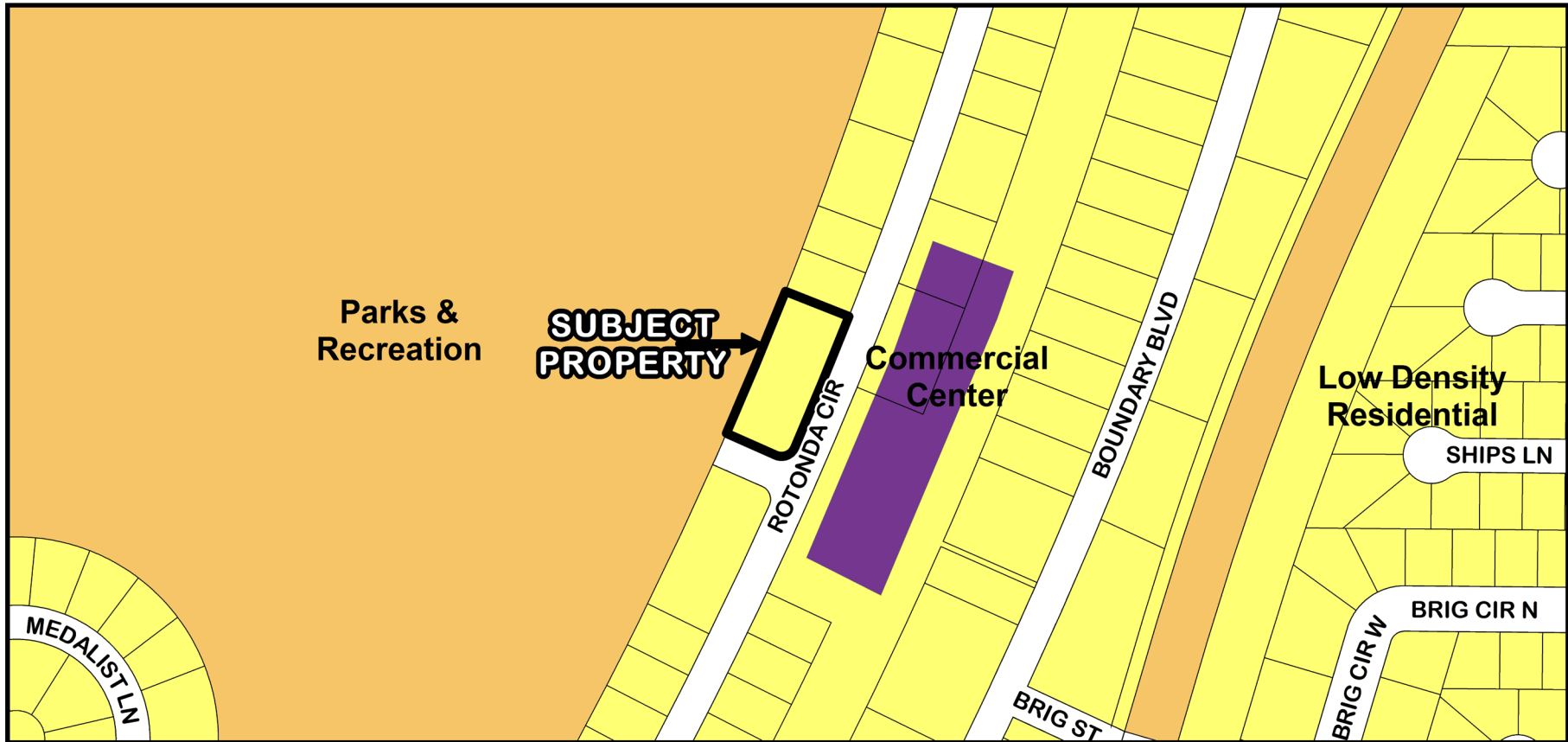


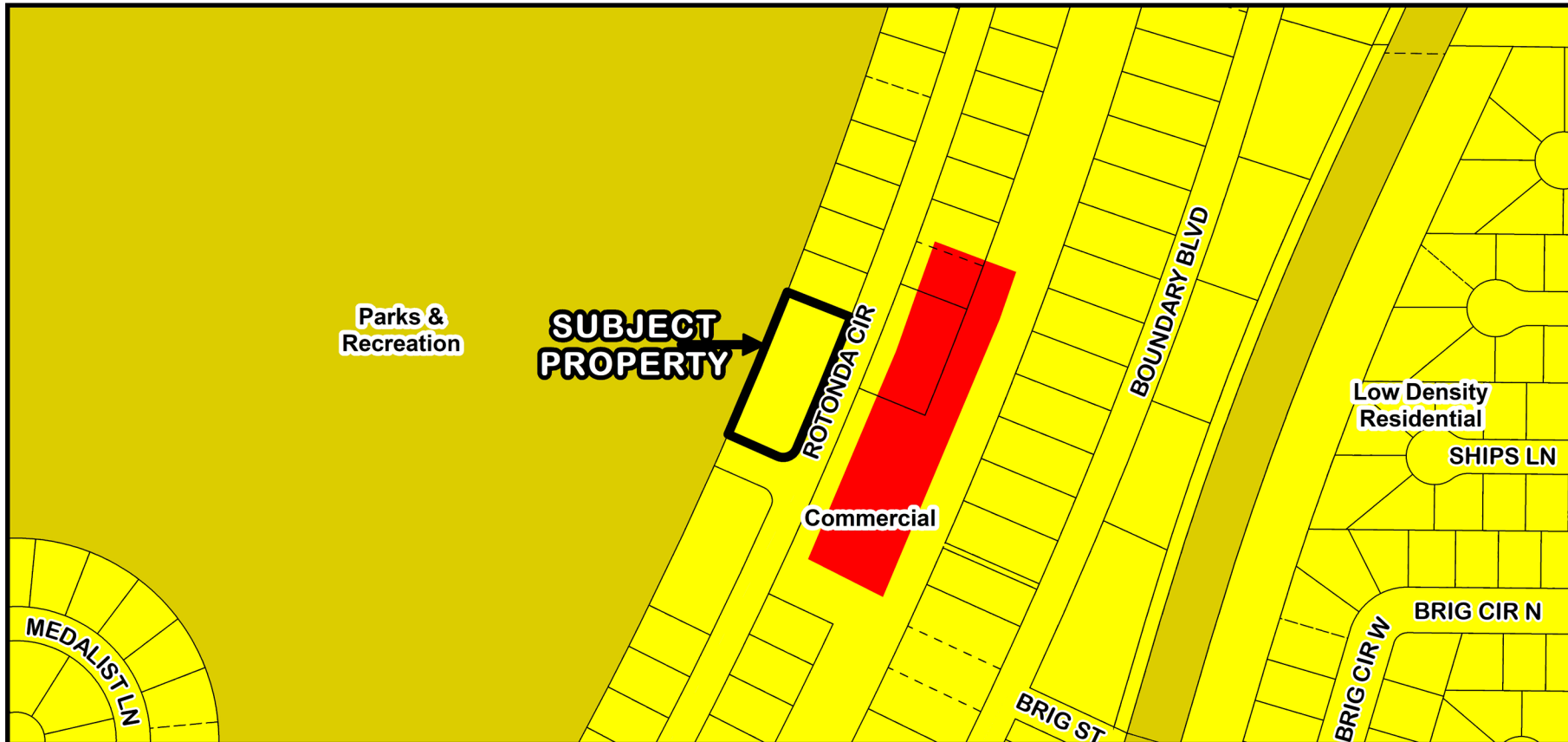
Z-26-12 and TDU-26-01 Service Area Delineation



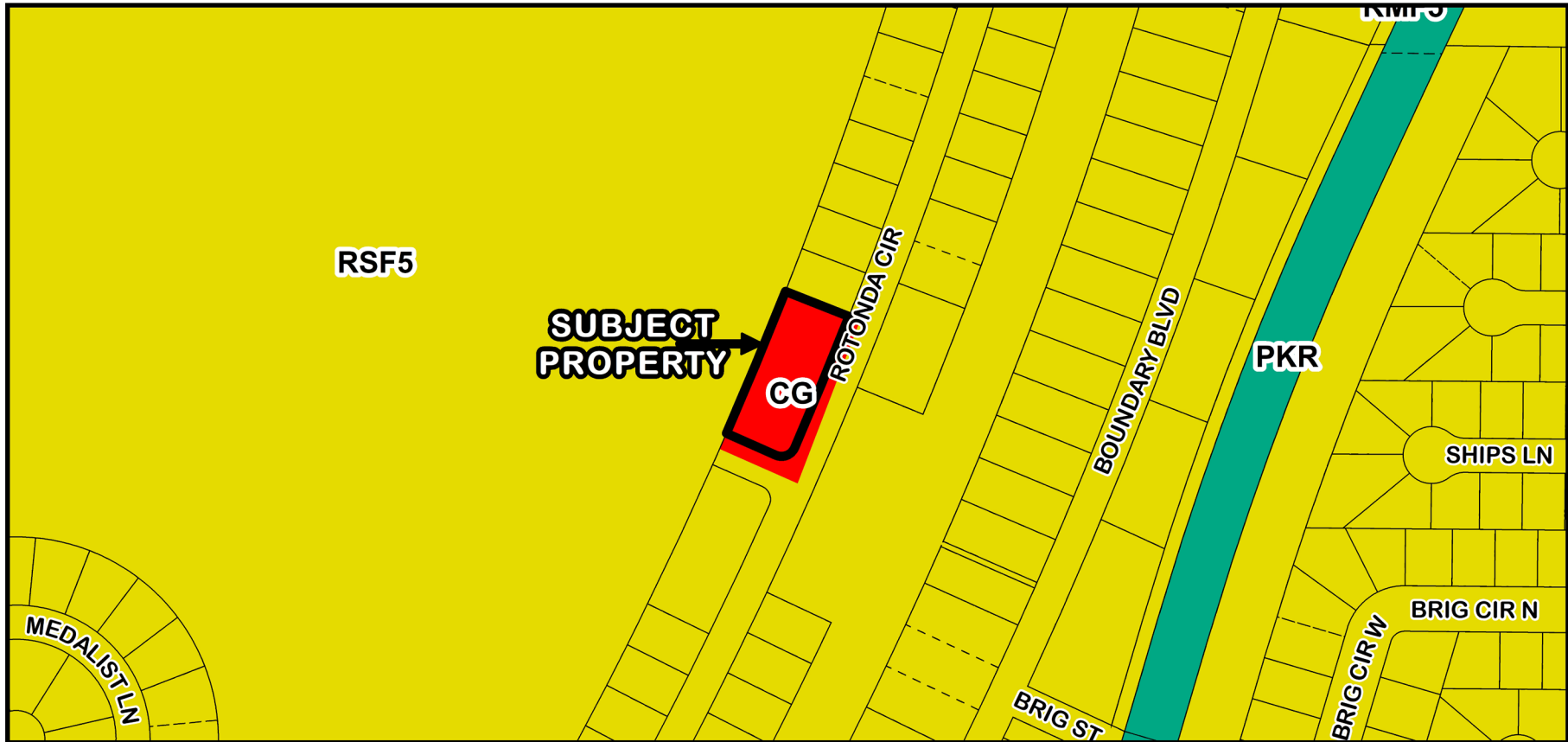


Z-26-12 and TDU-26-01 1988 FLUM Designations

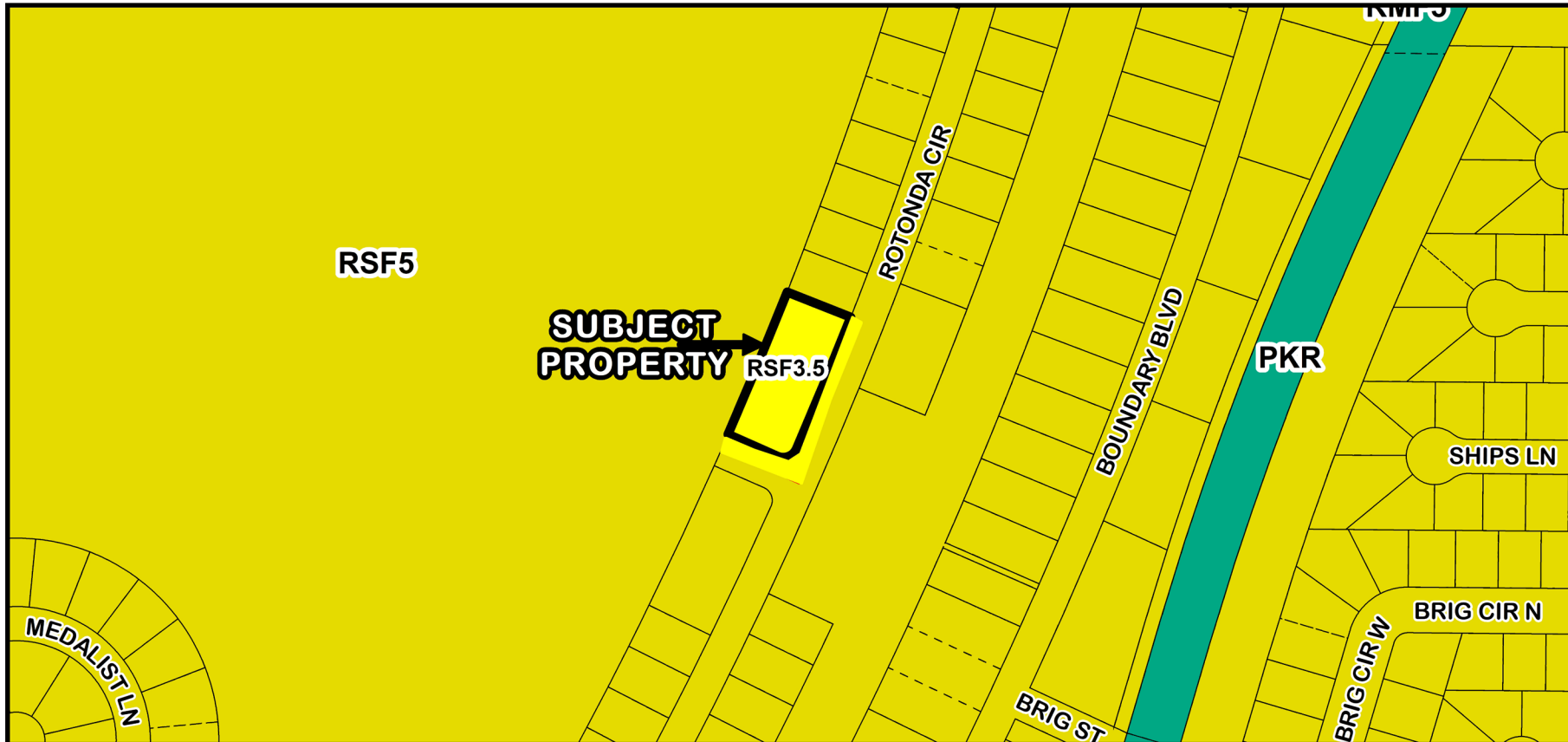




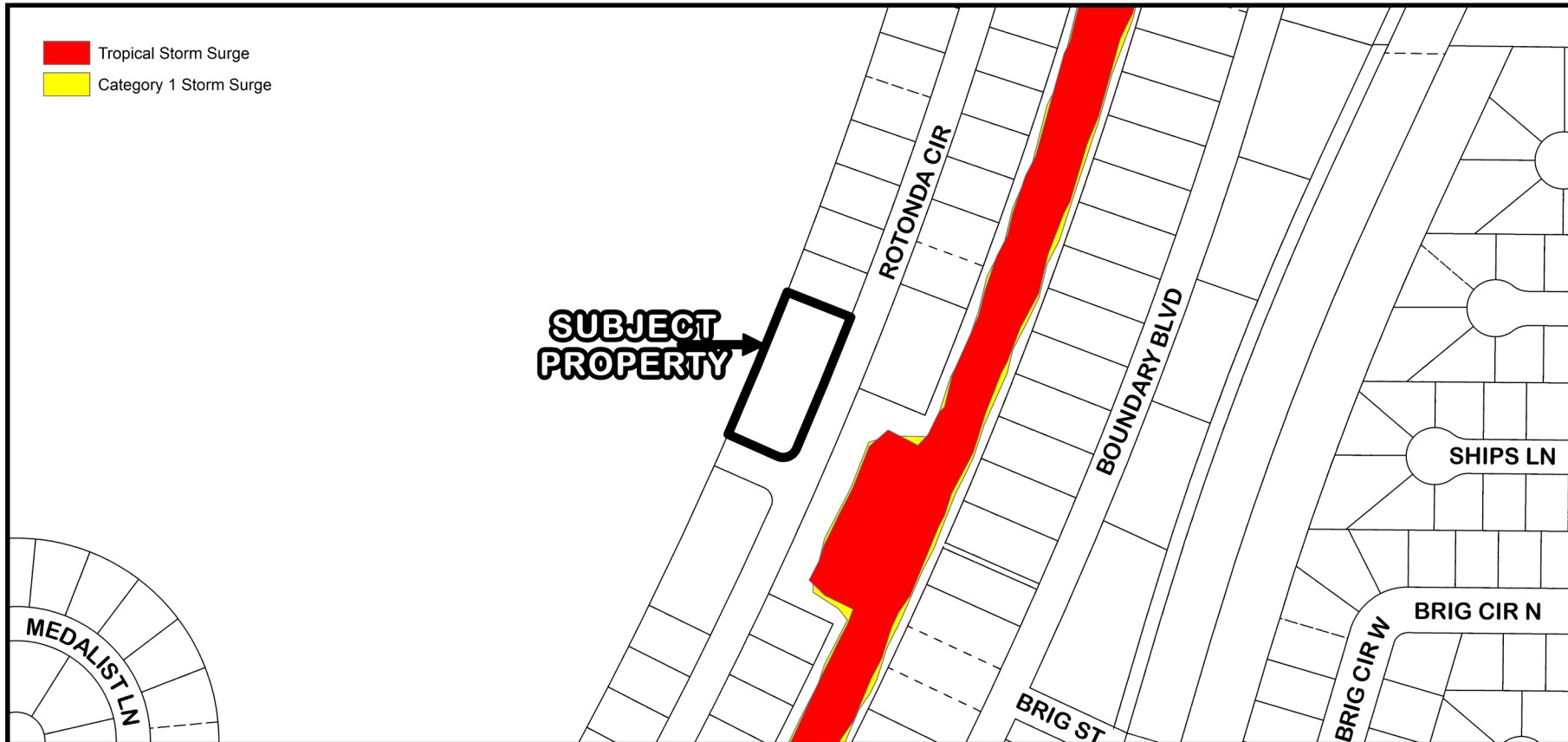
Z-26-12 and TDU-26-01 FLUM Designations



Z-26-12 and TDU-26-01 Existing Zoning Designations



Z-26-12 and TDU-26-01 Proposed Zoning Designations



Z-26-12 and TDU-26-01 Coastal High Hazard Area

