

**CHARLOTTE COUNTY**  
**Board of County Commissioners**

**DESIGN VARIOUS TURNING LANE IMPROVEMENTS**

Response to RFP NO. 20260226

April 16, 2026

Electronic



**PROJECT MANAGER**

Paul Benvie, PE  
239.206.5107  
PBenvie@drmp.com

1715 Monroe Street #500  
Fort Myers, FL 33901





**WHO WE ARE AT  
OUR CORE**

**EXPERTISE**

**QUALITY**

**LEADERSHIP**

**TRUST**

**RESPECT**

## **TABLE OF CONTENTS**

<b>TAB I</b>	<b>TEAM PROPOSED FOR THIS PROJECT</b>	<b>3</b>
<b>TAB II</b>	<b>PROPOSED MANAGEMENT PLAN</b>	<b>9</b>
<b>TAB III</b>	<b>PREVIOUS EXPERIENCE OF TEAM PROPOSED FOR THIS PROJECT</b>	<b>24</b>
<b>TAB IV</b>	<b>PROJECT CONTROL</b>	<b>29</b>
<b>TAB V</b>	<b>PRESENT PROPOSED DESIGN APPROACH FOR THIS PROJECT</b>	<b>36</b>
<b>TAB VI</b>	<b>PRESENT EXAMPLES OF RECENTLY ACCOMPLISHED SIMILAR PROJECTS</b>	<b>42</b>
<b>TAB VII</b>	<b>DESCRIBE YOUR EXPERIENCE AND CAPABILITIES IN THE FOLLOWING AREAS</b>	<b>45</b>
<b>TAB VIII</b>	<b>VOLUME OF WORK – TOTAL OF PAYMENTS RECEIVED FROM COUNTY WITHIN THE PAST 24 MONTHS</b>	<b>48</b>
<b>TAB IX</b>	<b>LOCATION</b>	<b>50</b>
<b>TAB X</b>	<b>LITIGATION – HAVE YOU BEEN NAMED AS A DEFENDANT OR CO-DEFENDANT IN A LAWSUIT IN THE LAST FIVE YEARS?</b>	<b>52</b>
<b>TAB XI</b>	<b>MINORITY BUSINESS</b>	<b>54</b>
<b>TAB XII</b>	<b>SUBMITTAL FORMS</b>	<b>56</b>

# TAB I

TEAM PROPOSED FOR THIS PROJECT



## Tab I: TEAM PROPOSED FOR THIS PROJECT

1715 Monroe Street #500, Fort Myers, FL 33901

Phone: 239.206.5107 | Fax: 407.896.4836

Primary Contact: Paul Benvie, PE | Email: PBenvie@drmp.com

1.833.811.3767 | www.DRMP.com

April 16, 2026

Charlotte County Purchasing Division  
18500 Murdock Circle, Suite 344  
Port Charlotte, Florida 33948-1094

**Subject: Design Various Turning Lane Improvements  
RFP NO. 20260226**

Dear Professional Services Committee:

As Charlotte County continues to grow, maintaining safe and efficient roadway operations is essential. Strategic turn lane additions represent a targeted approach to improving traffic flow, reducing delays, and enhancing safety by minimizing turning conflicts and improving access. These improvements are intended to support acceptable roadway and intersection Levels of Service (LOS) and improve overall operational performance along these important corridors.

As an industry leader in roadway and intersection improvement design, we recognize that the evaluation, design, and permitting of turn lane improvements are a strong match for DRMP, Inc. (DRMP). We believe you will find our team of qualified professionals offers unique insight and directly relevant project experience that will prove to be invaluable to County staff and the community. DRMP has a strong history of providing roadway widening, intersection, and turn lane improvement design and permitting across the State of Florida, including Charlotte County.

Our proposed team is described more thoroughly below and is led by Project Manager Paul Benvie, PE, a resident of Charlotte County. He and his staff have a vested interest in the successful completion of this project, as they live, work, and travel within the community.

### Project Team

Providing design services for this project is a team experienced in roadway improvements, traffic operations, and the design considerations associated with turn lane additions. This includes evaluating operational impacts, queuing, and LOS performance and developing geometric solutions that align with Charlotte County standards, applicable FDOT criteria, and accepted industry practices. Design will consider the Florida Department of Transportation Design Manual (FDM), Access Management standards, and the Manual of Uniform Minimum Standards while addressing corridor specific constraints such as drainage, right of way, and utilities.



**Paul Benvie, PE**

Project Manager

**19 YEARS OF EXPERIENCE**



**Amanda Woods, PE**

Vice President-in-Charge

**29 YEARS OF EXPERIENCE**



## Tab I: TEAM PROPOSED FOR THIS PROJECT

**Project Manager Paul Benvie, PE, will lead the team** by applying his experience in roadway and corridor improvement projects to develop practical and constructible solutions that enhance traffic operations and safety. We have assembled a highly capable team to ensure this project has the appropriate industry leading staff on board to assist with the design and permitting:

**Project Manager: Paul Benvie, PE** | 20 years experience

**Project responsibilities:** Project administration, coordination with County staff, bidding assistance, and construction administration services.

**Engineer of Record: Evhen Kyj, PE** | 19 years experience

**Project responsibilities:** Oversight of technical aspects to the project to ensure compliance with standards and consistency between all disciplines.

**Roadway Engineer: Patsy Fuschetto, PE** | 23 years experience

**Project responsibilities:** Conceptual design, roadway geometry, LOS and operational considerations, construction plans, and applicable permitting and technical research.

**Signals, Signing, and Pavement Marking Engineer: Christine Dalickas, PE** | 24 years experience

**Project responsibilities:** Conceptual signalization, signing and pavement marking design, operational considerations, and construction plans.

**Designer: Dan Zink, EI** | 4 years experience

**Project responsibilities:** Roadway layout, turn lane design, and construction plan development.

Our proposal is made without collusion with any other person or entity submitting a proposal pursuant to this RFQ. We genuinely want to continue to serve the County with our expertise by designing safe and effective turn lane and traffic operational improvements that are consistent with Charlotte County and FDOT standards. We look forward to building our relationship with the County. If you have any questions, we are happy to provide any additional information you may consider appropriate.

Sincerely,



**Paul Benvie, PE**  
Project Manager



**Amanda Woods, PE**  
Vice President-in-Charge

### OUR SERVICES

- Alternative Delivery
- Bridge Inspection (NBIS)
- Construction Services
- Ecological Services
- Federal Services
- Geographic Information Systems (GIS)
- Land Development
- PD&E/NEPA
- Structural Engineering
- Subsurface Utility Engineering (SUE)
- Surveying & Mapping/ Geospatial
- Transportation
- Utilities Engineering
- Water Resources/ Stormwater Management

**750+**  
TOTAL DRMP  
EMPLOYEES



### 1. BACKGROUND OF PERSONNEL



#### **PAUL BENVIE, PE** | Project Manager

Paul Benvie, PE, serves as the Fort Myers Office Leader for DRMP's Civil Services Market Sector. He has 19 years of experience in civil engineering and has served as Project Manager and Design Engineer for the design, permitting and construction of roadway and utilities infrastructure projects, utility-scale energy production and distribution projects, as well as many residential, commercial and municipal development projects. Mr. Benvie is well-versed in Construction Engineering and Inspection (CEI), construction materials testing, structural engineering, mechanical engineering and geotechnical engineering. With his diverse experience and depth of engineering and construction knowledge, he has successfully managed projects across the United States and Caribbean. Mr. Benvie has been instrumental in the preparation of permit applications in all local jurisdictions, including South Florida Water Management District, Florida Department of Transportation, Lee County, City of Fort Myers, City of Cape Coral, City of Naples and Collier County.

#### RELEVANT PROJECT EXPERIENCE

- Charlotte County Jail Expansion, Strollo Architects for Charlotte County, Florida: Project Manager.
- Quesada Avenue Sidewalks, Charlotte County: Project manager and Engineer of Record.

### 2. OTHER KEY PERSONNEL



#### **AMANDA WOODS, PE** | Vice President-in-Charge

Leadership and accountability start at the top and begin with the involvement of Amanda. She has been involved in all phases of design, from preliminary engineering to the final design of highway-related structures for conventional and design-build projects. Ms. Woods has been responsible for the preparations of preliminary and final design calculations and plans production on many single and multiple bridge projects involving rehabilitation, bridge widening, bridge replacement and new bridges.



#### **ALAN KING, PE** | QA/QC

Alan King, PE, serves as a Roadway Senior Engineer for DRMP's Transportation Market Sector. His experience includes many facets of transportation projects, ranging in complexity from small intersection improvements and resurfacing projects to major roadway reconstruction and interstate design-build projects. His current responsibilities include providing support to the Division by way of plan/design reviews.

#### RELEVANT PROJECT EXPERIENCE

- Quesada Avenue Sidewalk, Charlotte County, Florida: Senior Roadway Engineer.
- CR 765, Charlotte County, Punta Gorda, Charlotte County, Florida: Project Engineer.
- Winchester Boulevard Phase 3, Charlotte County, Englewood, Florida: Project Engineer.



#### **PATSY FUSCETTO, PE** | Lead Designer | Roadway

Patsy Fuschetto, PE, serves as a Roadway Project Manager for DRMP's Transportation Market Sector. He is responsible for project management and plans review, design and analysis, quality assurance/quality control for a wide range of project types. His design experience includes safety improvements, resurfacing, restoration and rehabilitation, cross slope correction, roadway widening and roadway reconstruction projects varying from 2-lane, 2-way facilities to complex interchanges. His experience also includes lighting, signalization, temporary traffic control plans, utility coordination, signing and pavement marking, pavement design, plans preparation, estimation of quantities and specifications.

#### RELEVANT PROJECT EXPERIENCE

- Lakewood Road Stormwater Improvements, The Village of Palm Springs, Palm Beach County, Florida: Roadway and Drainage Engineer.
- Oakland Park Sidewalk Replacement, Caltran Engineering Group, Inc. for FDOT District Four, Broward County, Florida: QA/QC Manager.

## Tab I: TEAM PROPOSED FOR THIS PROJECT



### **BILL CURTIS** | Surveying & Mapping/ SUE

Bill Curtis serves as a Project Manager for DRMP's Survey and Mapping/Geospatial Market Sector. His experience includes time as a Project Manager, CAD Tech, Staff Surveyor, and Field Crew Member. He has worked on boundary and topographic surveys, as well as home surveys for new home construction.

#### RELEVANT PROJECT EXPERIENCE

- Lover's Key State Park South Beach Restroom Replacement, FDEP, Manatee County, Florida: Survey Project Manager.
- Alley Boundary Staking, City of North Port, Sarasota County, Florida: Project Manager.



### **CHRISTINE DALICKAS, PE** | Signalization/Signing/Pavement Markings

Christine Dalickas, PE, serves as a Roadway Project Engineer for DRMP's Transportation Market Sector. She is responsible for plans production for transportation/traffic engineering projects including signalization plans, signing and pavement marking plans, lighting plans, traffic control plans and minor roadway widening projects. Ms. Dalickas has extensive experience in roadway design projects and completing task work orders under continuing contracts. She also has experience in minor roadway widening projects as well as resurfacing, restoration and rehabilitation. Ms. Dalickas has experience in larger roadway widening and realignment projects for both rural and urban roadways including bid construction document preparation.

#### RELEVANT PROJECT EXPERIENCE

- University Drive, FDOT District Four, Broward County, Florida: Engineer of Record, Signing and Pavement Markings and Signalization.
- SR 5 Resurfacing, Restoration, and Rehabilitation (RRR) from Sheridan to Old Griffin (449815-1), FDOT District Four, Broward County, Florida: Engineer of Record Signing and Pavement Markings.

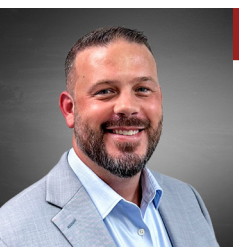


### **EVHEN KYJ, PE** | Temporary Traffic Control (TTC)

Evhen Kyj, PE, serves as the Boca Roadway Group Leader and as a Project Manager for DRMP's Transportation Market Sector. He has a wide range of experience managing and designing transportation infrastructure in the South Florida region. Mr. Kyj has extensive experience in the management and design of various roadway/highway engineering projects, as well as railroad track design for both passenger and freight operations. He has experience working with both public and private clients on a wide range of contracts, including PD&E, conceptual studies, requests for proposal (RFP) development, and final design.

#### RELEVANT PROJECT EXPERIENCE

- SR 429 Western Beltway from Western Way to Siedel Boulevard, Patel, Greene & Associates, PLLC for FTE, Orange County, Florida: Roadway Group Leader
- Sample Road Interchange Improvements at I-95, FDOT District Four, Broward County, Florida: Roadway EOR and Temporary Traffic Control Engineer



### **KYLE GOODWIN, PE** | Utility Coordination

Kyle Goodwin, PE, serves as a Florida Water Services Manager for DRMP's Municipal Civil Market Sector. His responsibilities include supporting DRMP's Utility Services Division and General Civil Services Market Sector with strategic planning, operations, client & project management. The majority of Mr. Goodwin's experience includes program and project management for a range of major and minor projects, civil design, budget and asset management, operations and maintenance, and public engagement as both a private and public professional.

#### RELEVANT PROJECT EXPERIENCE

- Wastewater Expansion Phase 2 (O'Hara Booster 10/Lift Station 23), GWE Inc., Charlotte County, Florida: Project Manager.

## Tab I: TEAM PROPOSED FOR THIS PROJECT



### STEVE FEHLHABER, PE | Drainage & Permitting

Stephen Fehlhaber, PE, serves as a Civil Engineer for DRMP's Civil Market Sector. His responsibilities include surface water management, drainage, utility design, and permitting. The majority of Mr. Fehlhaber's experience includes project design, specializing in adherence to federal, state, and local codes and standards. Proficient in surface water management, sanitary sewer, lift station, and potable water design. He has an extensive background in plan preparation, ensuring compliance with standards, specifications, ordinances, and company policies. Mr. Fehlhaber is known for design expertise in stormwater management, septic systems, and grading, utilizing various programs for accurate calculations.

#### RELEVANT PROJECT EXPERIENCE

- Quesada Avenue Sidewalk, Charlotte County, Florida: Civil Engineer.



### DANIEL ZINK, EI | Drainage & Permitting

Daniel Zink, EI, serves as a Civil Engineer for DRMP's Civil Services Market Sector. His responsibilities include support for engineering design, plan drawing, and stormwater management and civil engineering review. He has primarily worked on land development and public utility projects.

#### RELEVANT PROJECT EXPERIENCE

- Quesada Avenue Sidewalk, Charlotte County, Florida: Civil Engineer.

### 3. SUBCONSULTANTS



#### LOMSKI ENGINEERING AND TESTING, INC. (LET) PROJECT ROLE: GEOTECHNICAL ENGINEERING

**Lomski Engineering & Testing, Inc. (LET) is a DBE-certified Professional Engineering firm** established in 2009, providing dependable, high-quality engineering services throughout

Southwest Florida. LET specializes in construction materials testing (CMT), construction engineering inspection (CEI), and geotechnical engineering, delivering the technical expertise and responsive service required by contractors, engineers, and public agencies. LET is supported by a team with more than 75 years of combined industry experience and a proven record of accuracy, reliability, and client-focused performance. The firm operates a fully staffed geotechnical laboratory certified by CMEC and the Florida Department of Transportation (FDOT), supporting a comprehensive testing program in accordance with ASTM, AASHTO, and FDOT standards. Capabilities include testing concrete, soils, asphalt, masonry, steel, and other construction materials.

In addition to materials testing services, LET provides geotechnical evaluations and pavement section investigations to verify that subsurface conditions and construction materials meet design specifications, regulatory requirements, and long-term performance criteria.

LET has extensive experience supporting public-sector clients, including FDOT, Charlotte County, DeSoto County, Sarasota County, the City of North Port, and the City of Venice. The firm's familiarity with agency standards, documentation requirements, and project delivery processes ensures efficient coordination, regulatory compliance, and successful project execution.

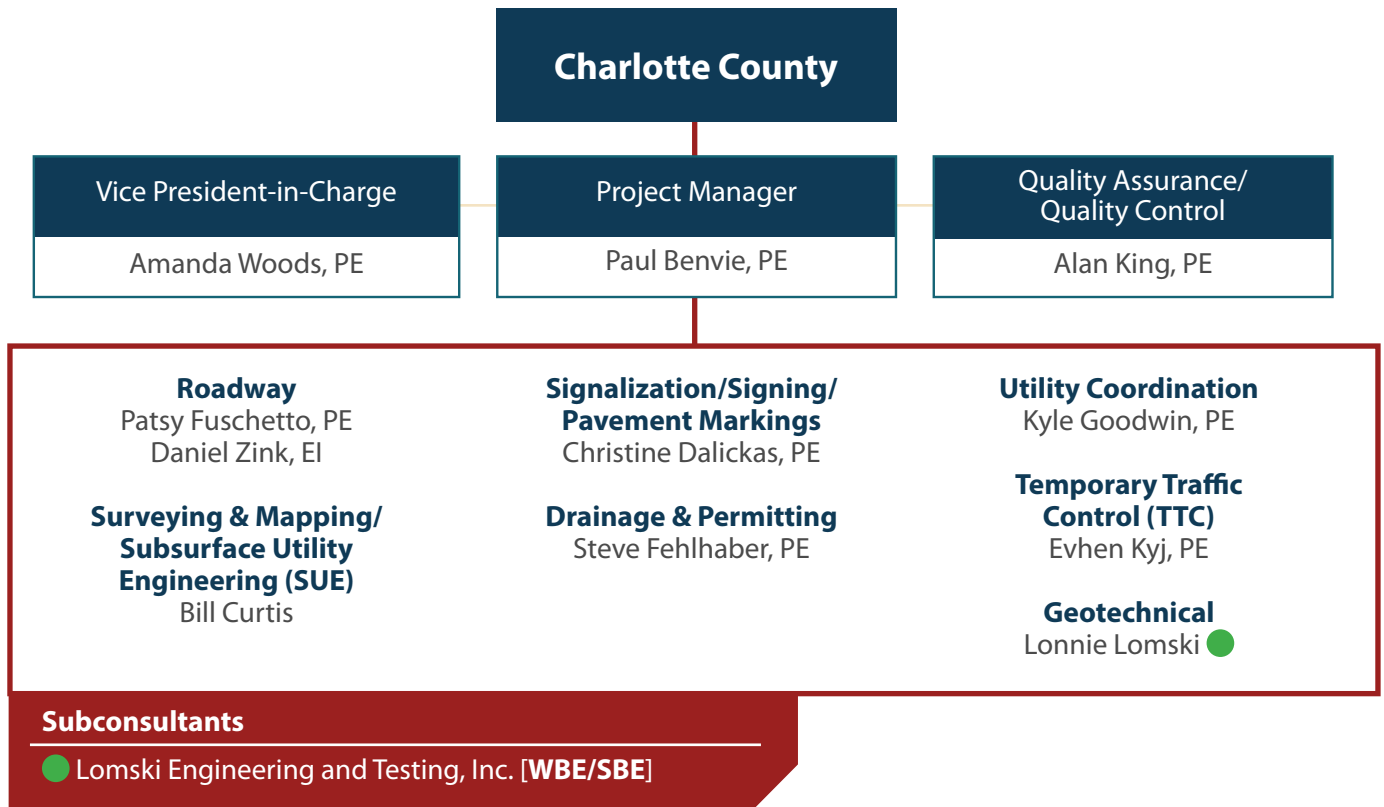
With a strong regional presence, certified laboratory capabilities, and a commitment to quality assurance and timely service, LET is well-positioned to support infrastructure and development projects requiring reliable, compliant, and technically sound engineering solutions.

# TAB II

## PROPOSED MANAGEMENT PLAN



A. TEAM ORGANIZATION



### 1. DESIGN PHASE

DRMP's management philosophy is to do whatever is required to fulfill the needs of the County. **Our Project Manager, Paul Benvie, PE**, will be the primary point-of-contact and will be fully responsible for coordination, budget/schedule control, progress reporting, quality delivery of each task work order, overseeing post design services and project construction.

**Patsy Fuschetto, PE, will serve as Lead Designer**, bringing extensive experience in roadway design, intersection improvements, and multimodal transportation solutions. He is responsible for overseeing all design development, ensuring technical quality, and delivering innovative, cost-effective solutions that meet project goals and applicable standards. ***The Lead Designer will not be substituted without the express permission of the County.***

The design phase will include roadway, signalization and signing & pavement marking survey, right-of-way, Geotech, MOT, utility coordination and environmental permitting. Please refer to our project approach on how we will address each of these items.

#### PROJECT MANAGEMENT PLAN (PMP)

After the kick-off meeting, Mr. Benvie will submit a PMP addressing project execution and controls of quality, schedule, budget and project risks. This PMP will control time and budget while putting in place a robust Quality Control Plan that ensures construction change orders do not occur. **This PMP will include:**

- ⊕ **Communication:** Mr. Benvie will be the primary point of contact and maintain clear and constant communication with the County.
- ⊕ **Risk management:** DRMP will perform risk analysis for each task and closely monitor risks with a risk register. All risks will be thoroughly discussed with the County, along with our mitigation strategy and plan of action
- ⊕ **Checklists:** All Charlotte County's sufficiency checklist for each phase submittal and bid package preparation
- ⊕ **Schedule and Budget Control:** Identifies task-level budgets, dates of key milestones, critical path activities, quality control activities, permitting and project risk items and lays-out recovery plan strategies for budgets or schedule deviations

#### QUALITY ASSURANCE/QUALITY CONTROL

DRMP's Quality Assurance/Quality Control (QA/QC) process involves a thorough, comprehensive review of work completed at each phase of design completion.

This includes checking materials for:

- ⊕ Conformance with applicable design standards
- ⊕ Conformance with client's needs and objectives
- ⊕ Cost-effective designs
- ⊕ Documents approved by permitting agencies
- ⊕ Documents are suitable for obtaining fair bids
- ⊕ Minimizes potential for construction problems

Tab II. PROPOSED MANAGEMENT PLAN

Once the QC review is completed, DRMP’s QC Manager prepares the QC documentation and delivers the plan set to the Project Manager with copies to DRMP Senior Staff. Sheets are completely “Yellowed Out” or “Redlined” with corrections/comments and signed and dated in the “B. CHECKED” line by the QC Reviewer. The QC Team similarly marks up the Comment Response memo. During the “CONCURRENCE”, “INCORPORATION”, and “VERIFICATION” activities, DRMP’s QC Manager and QC Reviewer are available to the Project Manager to discuss comments. The final QC plan set is retained by the DRMP Project Manager and routed to project archives.



2. CONSTRUCTION PHASE

Our Project Manager, Paul Benvie, PE, will remain on board to oversee the Post Design Services during construction. Additionally, the same design staff will remain to ensure consistency and continuity when handling Post Design tasks. Our team knows how time-sensitive construction tasks are and the cost impacts of not resolving in an expedited manner. We will acknowledge requests upon receipt with the goal of resolving RFIs and RFMs within one day and submittal reviews within 14 days.



Mr. Benvie has completed countless tasks for contractors. This brings important knowledge and insight to understand what needs to go into plan sets to make projects biddable, constructible and where innovation can save time and money to you as the owner without jeopardizing quality.

Through his experience as an Engineer, Mr. Benvie has proven to be innovative, pro-active and hands-on when construction issues arise and provide solutions that would serve the Owner’s interest.

RESUMES

On the following pages, you will find the resumes of our key team members, outlining their relevant experience and qualifications. These documents provide a detailed overview of the expertise and background that each individual brings.



**PAUL  
BENVIE, PE**

Project Manager

19 Years of Experience | 10 Years at DRMP

### Experience Summary

Paul Benvie, PE, serves as the Fort Myers Office Leader for DRMP’s Civil Services Market Sector. He has 19 years of experience in civil engineering and has served as Project Manager and Design Engineer for the design, permitting and construction of roadway and utilities infrastructure projects, utility-scale energy production and distribution projects, as well as many residential, commercial and municipal development projects. Mr. Benvie is well-versed in Construction Engineering and Inspection (CEI), construction materials testing, structural engineering, mechanical engineering and geotechnical engineering. With his diverse experience and depth of engineering and construction knowledge, he has successfully managed projects across the United States and Caribbean. Mr. Benvie has been instrumental in the preparation of permit applications in all local jurisdictions, including South Florida Water Management District, Florida Department of Transportation, Lee County, City of Fort Myers, City of Cape Coral, City of Naples and Collier County.

### Relevant Project Experience

**Charlotte County Jail Expansion, Strollo Architects for Charlotte County, Florida:**

Project Manager responsible for design, permitting, construction inspection and certification of this publicly funded project. The project involved the preparation of construction documents for site work to allow for a second inmate housing facility and four other buildings on 28 acres of land and modified two existing Southwest Florida Water Management District permits that covered 89 acres of drainage area. Upon issuance of site plan and drainage permits from Charlotte County Development Review and utilities construction permits from Punta Gorda Utilities and Florida Department of Environmental Protection, construction commenced in July 2007. Mr. Benvie provided CEI services for the duration of the three year construction project period which ended in July 2010. The project is now under final certification review by permitting agencies.

**Quesada Avenue Sidewalk, Charlotte County, Florida:** Project Manager for a 6 foot wide pedestrian sidewalk along the north side of Quesada Avenue running from Cochran Boulevard to Forrest Nelson Boulevard. The project involves the site plan engineering design of a concrete sidewalk, including site layout, plan and profiles, and cross sections. While giving direction to support staff on completing the site improvement package for Charlotte County and communication with client and day-to-day process.

#### Professional Registrations

Professional Engineer  
No. 72261, Florida, 2011

#### Education

Bachelor of Science in Civil  
Engineering, University of Florida, 2006

#### Certifications

FDOT Earthwork Construction Inspection  
– Level I  
ACI Field Concrete Testing Technician –  
Level I

#### Software Aptitude

ArcView GIS  
AutoCAD Civil 3D  
Autodesk Inventor  
Autodesk Land Development Desktop  
Cartegraph  
LPILE Foundation Modeling  
STAAD Pro  
StormWise (Formally ICPR 4)

#### Professional Affiliation

American Public Works Association,  
Southwest Florida Chapter, Board  
Member  
City of Fort Myers Building & Zoning  
Oversight Committee (BZOC)  
Lee County Bicycle and Pedestrian  
Advisory Committee Member  
Real Estate Investment Society (REIS)  
Urban Land Institute (ULI) Southwest  
Florida Chapter, Committee Member



AMANDA  
**WOODS, PE**

Vice President-in-Charge

29 Years of Experience | 29 Years at DRMP

**Experience Summary**

Amanda Woods, PE, serves as a Vice President and the Director of Transportation for DRMP’s Transportation Market Sector. She has been involved in all phases of design, from preliminary engineering to the final design of highway-related structures for conventional and design-build projects. Ms. Woods has been responsible for the preparations of preliminary and final design calculations and plans production on many single and multiple bridge projects involving rehabilitation, bridge widening, bridge replacement and new bridges.

Her responsibilities as Director of Transportation include business plan development, contract administration, project coordination, budgeting and scheduling and business development/marketing company wide. Ms. Woods also serves as a Senior Project Manager who specializes in the design and project management for major FDOT transportation projects. Her project experience includes working closely with Florida’s Turnpike Enterprise as well as other FDOT Districts and municipalities. Projects include limited access roadway alignments with interchanges and managed lanes, widening and resurfacing of interstates and arterials and bridge replacements. Project work includes design of roadways, bridges, drainage, utility coordination, traffic operations, lighting, intelligent transportation systems (ITS), right-of-way mapping, environmental permitting and public involvement.

**Relevant Project Experience**

**SR 589 (Suncoast Parkway 2) from US 98 to South of W. Grover Cleveland Boulevard (MP 54.7-63.3), Florida’s Turnpike Enterprise, Hernando and Citrus Counties,**

**Florida:** Structures Engineer of Record for this new \$134.6 million, 4-lane limited access all-electronic tolling facility. Responsible for the Bridge Development Report, structural calculations and plans production for five sites along SR 589 and one pedestrian bridge site over US 98; all using Florida-I Beams. Three sites consisted of twin overpass structures along SR 589; one site consisted of a two-span structure over SR 589 with aesthetic piers; and the final site consisted of twin bridges over a Wildlife Crossing. All sites included the design of MSE retaining walls. Plans included the design of roadway, drainage, signing and pavement markings, structures, lighting, signals, intelligent transportation systems, environmental permitting and surveying.

**Professional Registrations**

Professional Engineer  
No. 58816, Florida, 2002  
No. 33631, Mississippi, 2023

**Education**

Bachelor of Science in Civil Engineering, University of Central Florida, 1996

**Software Aptitude**

ATLAS  
CWALSHT  
FB Pier  
FDOT Cantilever Overhead Sign  
FDOT Drilled Shaft  
FDOT High Mast  
FDOT LFD and LRFD Prestressed Beam  
FDOT LRFD Box Culvert  
FDOT LRFD Retaining Wall  
FDOT Mast Arm  
FDOT Span Overhead Sign  
GEOPAK  
LEAP RC-Pier  
MicroStation  
Mathcad  
STAAD

**Professional Affiliation**

American Society of Civil Engineers (ASCE)  
Florida Engineering Society (FES)  
Florida Engineering Leadership Institute (FELI), Class of 2016  
Women’s Transportation Seminar (WTS)



ALAN  
**KING, PE**

Quality Assurance/ Quality Control

46 Years of Experience | 7 Years at DRMP

**Experience Summary**

Alan King, PE, serves as a Roadway Senior Engineer for DRMP’s Transportation Market Sector. His experience includes many facets of transportation projects, ranging in complexity from small intersection improvements and resurfacing projects to major roadway reconstruction and interstate design-build projects. His current responsibilities include providing support to the Division by way of plan/ design reviews.

**Relevant Project Experience**

**Quesada Avenue Sidewalk, Charlotte County, Florida:**

Senior Roadway Engineer responsible for quality control reviews for a 6 foot wide pedestrian sidewalk along the north side of Quesada Avenue running from Cochran Boulevard to Forrest Nelson Boulevard. The project involves the site plan engineering design of a concrete sidewalk, including site layout, plan and profiles, and cross sections.

While giving direction to support staff on completing the site improvement package for Charlotte County and communication with client and day-to-day process.

**CR 765, Charlotte County, Punta Gorda, Charlotte County, Florida:** Project Engineer for the design of this reconstruction and widening from a 2-lane to 4-lane divided roadway project.

**Winchester Boulevard Phase 3, Charlotte County, Englewood, Florida:** Project Engineer for the design of this new 4-lane divided roadway that will also serve as a new connection to the evacuation route between Englewood and I-75.

**Piper Road/North Jones Loop Road, Charlotte County, Punta Gorda, Florida:** Project Engineer for this project that included improvements to the intersection of these two roads, along with improvements to North Jones Loop Road.

**Old Mission Road Roadway Improvements, Volusia County, Florida:** Senior Roadway Engineer to support the realignment and safety improvements on Old Mission Road from W. Park Avenue to Josephine Street/10th Street near the Cities of Edgewater and New Smyrna Beach. The project includes providing engineering design and permitting services including support services to implement roadway safety improvements. Services include roadway design, drainage design, signing and pavement marking, environmental surveys and permitting, geotechnical investigation, survey, and right-of-way mapping. This project includes a roundabout design at the Eslinger Road intersection and the addition of a 10-foot multi-use path to increase safety along the corridor.

**SR 312 Extension from SR 207 to SR 16, FDOT District Two, St. Johns County, Florida:** Senior Roadway Engineer for a 4.1-mile alternative alignment study for the SR 312 corridor from SR 207 to SR 16 based on the proposed new alignment shown in the previously developed 45% plans. The project includes PD&E support for the environmental re-evaluation and preparation of final plans for the selected preferred alternative.

**Professional Registrations**

Professional Engineer  
No. 037540, Georgia, 2012  
No. 57288, Florida, 2001  
No. 19827, South Carolina, 1999

**Education**

Bachelor of Science in Civil Engineering, University of South Carolina, 1994

**Certifications**

FDOT Pavement Design  
FDOT Specifications

**Software Aptitude**

AutoTURN  
GEOPAK  
Microsoft Office  
MicroStation



PATSY  
**FUSCHETTO, PE**  
Roadway

23 Years of Experience | 6 Years at DRMP

### Experience Summary

Patsy Fuschetto, PE, serves as a Roadway Project Manager for DRMP’s Transportation Market Sector. He is responsible for project management and plans review, design and analysis, quality assurance/quality control for a wide range of project types. His design experience includes safety improvements, resurfacing, restoration and rehabilitation, cross slope correction, roadway widening and roadway reconstruction projects varying from 2-lane, 2-way facilities to complex interchanges. His experience also includes lighting, signalization, temporary traffic control plans, utility coordination, signing and pavement marking, pavement design, plans preparation, estimation of quantities and specifications.

#### Professional Registration

Professional Engineer  
No. 70364, Florida, 2009

#### Education

Bachelor of Science in Civil  
Engineering, Florida International  
University, 2003

#### Certifications

Advanced Work Zone Traffic Control

#### Software Aptitude

AGI32  
AutoTURN  
GEOPAK  
GuideSIGN  
MicroStation  
OpenRoads Designer (ORD)  
Synchro

### Relevant Project Experience

**Lakewood Road Stormwater Improvements, The Village of Palm Springs, Palm Beach County, Florida:** Roadway and Drainage Engineer for the stormwater improvements proposed for the Lakewood Road corridor. The plan called for analyzing areas along Lakewood Road, Patio Court, Almar Road, and Price Street where improvements to stormwater conveyance were merited. The project involved altering the existing stormwater management system to add in additional structures for better conveyance. The project will provide the final design, permitting, bidding, and construction services required to implement the improvements recommended for the project.

**Districtwide Traffic Operations Push Button Contract C9W15, FDOT District Four, Districtwide, Various Counties, Florida:** Project Manager for task work orders assigned under this contract which included projects consisting of providing miscellaneous traffic operations design services throughout FDOT District Four. The projects include turn lane additions, signal modifications, pedestrian feature upgrades, safety upgrades and all related components required. Projects are developed in response to traffic safety issues, public concerns and local agency requests. Representative projects include:

- ⊕ **SR 838 (Sunrise Boulevard) at NW 43rd Avenue, FDOT District Four, Broward County, Florida:** Project Manager for the roadway improvements to provide a right-turn drop lane at the end of the existing merge lane from US 441.

**SR 845 (Powerline Road) from South of NW 30th Place to American Way, Marlin Engineering, Inc. for FDOT District Four, Broward County, Florida:** Senior Roadway Engineer as a subconsultant on this resurfacing, restoration and rehabilitation project to convert the existing FDOT maintained lighting to FPL. Tasks include photometric analysis, lighting design report, FPL coordination and contract plans to implement the FPL owned and maintained lighting.



**BILL CURTIS**

Surveying & Mapping/ SUE

13 Years of Experience | 1 Year at DRMP

**Experience Summary**

Bill Curtis serves as a Project Manager for DRMP’s Survey and Mapping/Geospatial Market Sector. His experience includes time as a Project Manager, CAD Tech, Staff Surveyor, and Field Crew Member. He has worked on boundary and topographic surveys, as well as home surveys for new home construction.

**Relevant Project Experience**

**Cresciento Condominiums Topographic Survey and SUE Services, Wright Construction Corporation for the Town of Fort Myers Beach, Lee County, Florida:**

Survey Task Manager responsible for the preparation of a topographic survey to support the design of drainage improvements for the project site. The topographic survey included the field recovery of boundary monumentation, storm structures and pipe locations to include pipe size and type along with inverts and top elevations. The survey was referenced horizontally on the North American Datum 83 (NAD 83) and vertically on the North American Vertical Datum of 1988 (NAVD 88). Services also included subsurface utility engineering (SUE) support by providing test holes to determine the vertical location of existing utilities at locations identified by the client such as potential conflicts with proposed design features.

**Alley Boundary Staking, City of North Port, Sarasota County, Florida:** Project Manager responsible for providing the staking of a boundary of an alley for the City of North Port’s Public Works Department. Survey services were provided to support the City’s newly acquired responsibility for maintenance and upkeep of the alley by the Road and Drainage District. This survey was conducted under DRMP’s continuing services contract.

**Five Leaf Road Boundary Staking, City of North Port, Sarasota County, Florida:** Project Manager responsible for providing the staking of a boundary of city-owned land along Five Leaf Road for the City of North Port’s Public Works Department. Survey services were provided to support the City in preparing a new Disaster Debris Management Site at the project site. This survey was conducted under DRMP’s continuing services contract.

**Lover’s Key State Park South Beach Restroom Replacement, Florida Department of Environmental Protection, Manatee County, Florida:** Survey Project Manager responsible for the topographic survey performed to support the design and permitting for a new elevated restroom, sanitary sewer lift station, 2800-LF of force main and water main (open cut and directional drill), and associated park amenities.

**ALTA/NSPS Land Title Survey, Woodard & Curran, Broward County, Florida:** Survey Task Manager responsible for the preparation of an ALTA Land Title Survey. Boundary survey tasks for this project included the recovery and/or establishment of all boundary corners of the property and the location of all visible physical improvements including roadways, walls, fences, above-ground evidence of utilities, edges of water, paved areas, buildings, signs, light posts, curbing inlets, and permanent structures, etc. Easements and/or other encumbrances were graphically displayed upon the survey if plottable, in tabular form otherwise.

**Education**

Associate of Arts, Tallahassee Community College, Florida

**Software Aptitude**

AutoCAD Civil 3D  
 Caice  
 GEOPAK  
 Leica GPS  
 Microsoft Office Suite  
 MicroStation  
 Softdesk  
 Trimble



CHRISTINE DALICKAS, PE

Signalization/Signing/Pavement Markings

23 Years of Experience | 13 Years at DRMP

Experience Summary

Christine Dalickas, PE, serves as a Roadway Project Engineer for DRMP’s Transportation Market Sector. She is responsible for plans production for transportation/traffic engineering projects including signalization plans, signing and pavement marking plans, intelligent transportation systems, lighting plans, traffic control plans and minor roadway widening projects.

Ms. Dalickas has extensive experience in roadway design projects and completing task work orders under continuing contracts. She also has experience in minor roadway widening projects as well as resurfacing, restoration and rehabilitation. Ms. Dalickas has experience in larger roadway widening and realignment projects for both rural and urban roadways including bid construction document preparation.

Professional Registration

Professional Engineer No. 62423, Florida, 2005

Education

Bachelor of Science in Civil Engineering, University of Florida, 1999

Software Aptitude

AGI32 Aladan GuideSIGN MicroStation

Professional Affiliation

Florida Engineering Society (FES)

Relevant Project Experience

University Drive, FDOT District Four, Broward County, Florida: Engineer of Record responsible for the design of the signing and pavement markings and the design of the signalization of the NW 40th Street, Wiles Road and Westview Drive intersections for the existing suburban 4-lane divided highway on University Drive to a 6-lane divided urban highway from just south of Cardinal Road/NW 40th Street to the Sawgrass Expressway/SR 869, approximately 1.6 miles within the City of Coral Springs. Project includes roadway design, lighting design, signing and pavement marking, signalization, intelligent transportation systems, miscellaneous structures, utilities, surveying and right-of-way mapping, permitting, landscaping and public involvement.

SR 5 Resurfacing, Restoration, and Rehabilitation (RRR) from Sheridan to Old Griffin (449815-1), FDOT District Four, Broward County, Florida: Engineer of Record responsible for signing and pavement marking plans for the design services of the highway, street, airfield paving, and parking lots in Broward County, Florida. DRMP is the prime design consultant for this 1.8-mile-long resurfacing, restoration, and rehabilitation (RRR) project. This segment of SR 5/US 1/Federal Highway is a 5-lane urban principal arterial adjacent to commercial and residential properties in Dania Beach, Florida. The project scope includes milling and resurfacing, ADA upgrades, safety improvements, signing and pavement marking upgrades, and pedestrian signal upgrades. DRMP was awarded this contract in December 2023 and project letting is scheduled for July 2027. Services provided by DRMP include roadway design, traffic design, survey and SUE, and utility coordination.

Oakland Park Sidewalk Replacement, FDOT District Four, Broward County, Florida: Engineer of Record responsible for the design of the signing and pavement markings for the sidewalk improvements. DRMP was awarded this project as a subconsultant and it consists of proposing sidewalk along 14 local street in the City of Oakland Park. This project is a Broward MPO funded mobility project on off-system roadways. Critical scope items include ADA sidewalk, swale regrading and drainage improvements, signing and pavement markings, utility coordination and public involvement with residents and schools.



EVHEN  
**KYJ, PE**  
TTC

19 Years of Experience | 8 Years at DRMP

### Experience Summary

Evhen Kyj, PE, serves as the Boca Roadway Group Leader and as a Project Manager for DRMP’s Transportation Market Sector. He has a wide range of experience managing and designing transportation infrastructure in the South Florida region. Mr. Kyj has extensive experience in the management and design of various roadway/highway engineering projects, as well as railroad track design for both passenger and freight operations. He has experience working with both public and private clients on a wide range of contracts, including PD&E, conceptual studies, requests for proposal (RFP) development, and final design.

He has served as a Project Manager, Designer, and Engineer of Record on various types of roadway improvements, including resurfacing, restoration, and rehabilitation; safety improvement projects; interstate corridors; complex interchange highway design; high-occupancy vehicle/ managed lane; and bridge replacement projects. He has developed an expertise in various aspects of transportation design, specifically geometric roadway and track design, Temporary Traffic Control, signing and pavement marking design, cost and quantity estimates, lighting and drainage design, utility coordination, and development of project specifications. He has expert knowledge and extensive experience with MicroStation, GEOPAK, OpenRoads, and 3D corridor modeling.

Mr. Kyj has also provided in-house support for FDOT District Four. He has assisted Project Managers and acted as a temporary Project Manager in Section 4 of the Consultant Management Department. As a Project Manager, Mr. Kyj has expertise in developing project scopes and estimates for construction and scopes and fee proposals for design. Using experience gained as a consultant PM and an In-House Consultant Management PM, Mr. Kyj is skilled at managing project schedules, budgets, staff, and coordinating with internal FDOT staff and relevant project stakeholders.

### Relevant Project Experience

**SR 429 Western Beltway from Western Way to Siedel Boulevard, Patel, Greene & Associates, PLLC for Florida’s Turnpike Enterprise, Orange County, Florida:** As Boca Roadway Group Leader, Mr. Kyj is responsible for managing production and staff allocation to complete design and all necessary project deliverables. DRMP is serving as a subconsultant to PGA for this limited access project to widen SR 429 from a 4-lane facility to 8-lanes. DRMP is responsible for the construction phasing via design and production of temporary traffic control plans (TTCP) including temporary drainage and temporary lighting.

#### Professional Registrations

Professional Engineer  
No. 74009, Florida, 2012

#### Education

Bachelor of Science in Civil  
Engineering, University of Florida, 2006

#### Certifications

Advanced Maintenance of Traffic  
Certification, No. 625870  
FDOT Specification Training

#### Software Aptitude

3D Corridor Modeling  
AutoTURN  
FDOT ProjectSuite  
GEOPAK  
GuideSign  
MicroStation  
OpenRoads Designer (ORD)

#### Professional Affiliation

Florida Engineering Society (FES)



KYLE  
**GOODWIN, PE**  
Utility Coordination

20 Years of Experience | 1 Year at DRMP

**Experience Summary**

Kyle Goodwin, PE, serves as a Florida Water Services Manager for DRMP’s Municipal Civil Market Sector. His responsibilities include supporting DRMP’s Utility Services Division and General Civil Services Market Sector with strategic planning, operations, client & project management. The majority of Mr. Goodwin’s experience includes program and project management for a range of major and minor projects, civil design, budget and asset management, operations and maintenance, and public engagement as both a private and public professional.

**Professional Registrations**

Professional Engineer  
No. 28662, Kentucky, 2012  
No. 84869, Florida, 2018

**Education**

Masters in Business Administration,  
University of Kentucky, 2017  
Bachelor of Science in Civil  
Engineering, Bucknell University,  
Pennsylvania, 2005

**Professional Affiliation**

American Society of Civil Engineers  
(ASCE)

**Relevant Project Experience**

*WORK PRIOR TO DRMP*

**Wastewater Expansion Phase 2 (O’Hara Booster 10/**

**Lift Station 23), GWE Inc., Charlotte County, Florida:** Project Manager responsible for preliminary engineering, final engineering design, permitting, bidding, and construction administration services for a new booster/disinfection station and replacement wastewater lift station for Charlotte County Utilities.

**TAZ Delineation and Growth Analysis, Collier County, Florida:** Project Manager responsible for the management of GIS, engineering, and modeling services to support the forthcoming Collier County Utilities Master Plan. Mr. Goodwin utilized the County’s Integrated Growth Model (CIGM), segregated by Traffic Analysis Zones (TAZ), to merge with the Utility’s GIS sewershed layers to understand growth patterns. He also modified sewershed boundaries and GIS growth heat maps were developed for 2020, 2025, 2030, and 2040 population projects.

**Master Pump Station 302.00 Site Expansion/Station Upgrades Design Services and SDC, Collier County, Florida:** Project Manager responsible for managing the development of the conceptual design, site survey, 100% final design plans, and site/environmental permitting. Mr. Goodwin managed the development of a basis design report for a new custom odor control system, portable generator charging areas, security upgrades, and wastewater overflow containment measure.

**Building K Central Energy Plant, Collier County, Florida:** Task Manager responsible for survey, preliminary and final site design, permitting, and services during construction for a new CEP, attached to Building K, including air-cooled chillers and a new above-ground 1.5-MG chilled water TES tank.

**Jail Laundry Facility, Collier County, Florida:** Project Manager responsible for managing the design team providing design and construction administration for a new laundry facility and renovation of the existing laundry facility into office space at the Collier County Jail. Mr. Goodwin also provided preliminary concept, summary report, final construction documents, building permits, and bid support services.



STEPHEN FEHLHABER, PE

Drainage & Permitting

6 Years of Experience | 2 Years at DRMP

Experience Summary

Stephen Fehlhaber, PE, serves as a Civil Engineer for DRMP’s Civil Market Sector. His responsibilities include surface water management, drainage, utility design, and permitting. The majority of Mr. Fehlhaber’s experience includes project design, specializing in adherence to federal, state, and local codes and standards. Proficient in surface water management, sanitary sewer, lift station, and potable water design. He has an extensive background in plan preparation, ensuring compliance with standards, specifications, ordinances, and company policies. Mr. Fehlhaber is known for design expertise in stormwater management, septic systems, and grading, utilizing various programs for accurate calculations.

Professional Registration

Professional Engineer
No. 98609, Florida, 2024

Education

Bachelor of Science in Civil Engineering, New Jersey Institute of Technology, 2019

Software Aptitude

AutoDesk Civil 3D
AutoCAD
BMP Trains
HydroCAD
ICPR
StormCAD
WaterCAD

Professional Affiliation

American Society of Civil Engineers (ASCE)

Relevant Project Experience

Quesada Avenue Sidewalk, Charlotte County, Florida:

Civil Engineer responsible for drainage calculations to assist in water management district permit exemption request for a 6-foot-wide pedestrian sidewalk along the north side of Quesada Avenue running from Cochran Boulevard to Forrest Nelson Boulevard. The project involves the site plan engineering design of a concrete sidewalk, including site layout, plan and profiles, and cross sections. While giving direction to support staff on completing the site improvement package for Charlotte County and communication with client and day-to-day process.

Riviere Road Roadway Improvements, Pinellas County, Florida: Civil Engineer responsible for assisting with drainage enhancements for roadway improvements to accommodate multi-use-path, sidewalk, roadway reconstruction, changing the existing roadway typical section from rural to urban with curb/gutter, safety, and drainage improvements along Riviere Road from CR 752 (Tampa Road) to CR 776 (Nebraska Avenue/CR 584A). This project also includes pond siting analysis, public involvement, traffic study to propose Rectangular Rapid Flashing Beacons (RRFB), signing and pavement markings and geotechnical exploration.

City of Palm Coast – Public Works Facility Civil Services, Pond & Company for the City of Palm Coast, Flagler County, Florida: Civil Engineer responsible for drainage design and potable water sizing, as well as sanitary sewer and lift station design and sizing to support the surface water management design of a Public Works Facility in the City of Palm Coast following the comprehensive AutoCAD Civil 3D digital map of the existing 16-acre facility and surrounding area. The parking lot and building floor elevations of the facility were designed to be above typical flooding design criteria. These features allow the facility to serve as a severe weather staging area for utility storm response crews. Additional services include mapping of parcel boundary, easements, right-of-ways, geographical features, physical improvements, roadways, structures, trees, jurisdictional wetlands, geotechnical data, utilities, and contours.



DANIEL  
**ZINK, EI**  
Roadway

3 Years of Experience | 2 Years at DRMP

**Experience Summary**

Daniel Zink, EI, serves as a Civil Engineer for DRMP’s Civil Services Market Sector. His responsibilities include support for engineering design, plan drawing, and stormwater management and civil engineering review. He has primarily worked on land development and public utility projects.

**Relevant Project Experience**

**Quesada Avenue Sidewalk, Charlotte County, Florida:** Civil Engineer responsible for support with engineering design, including aerial base mapping, grading and drainage, sidewalk layout, plan drawings, and coordination with local utility companies for a 6 foot wide pedestrian sidewalk along the north side of Quesada Avenue running from Cochran Boulevard to Forrest Nelson Boulevard. The project involves the site plan engineering design of a concrete sidewalk, including site layout, plan and profiles, and cross sections. While giving direction to support staff on completing the site improvement package for Charlotte County and communication with client and day-to-day process.

**Cowboy Way Design and Permitting, Hendry County, Florida:** Civil Engineer responsible for support with engineering design, including aerial base mapping, roadway milling and resurfacing, roadway reconstruction, plan drawings, lead design for pavement marking and signing plans, and developing a probable cost for roadway improvements for 1.5 miles of resurfacing for Cowboy Way, which is the major County-maintained arterial connecting SR 80 and SR 29. The design was intended to be a standard milling and resurfacing project, but due to base failure discovered during the core testing performed by the geotechnical engineer, the project evolved into reconstruction and an add/alternate design of full depth reclamation (FDR). The final design includes a complete signing and pavement marking plan as well as a comprehensive maintenance of traffic plan.

**Lake Manatee State Park Campground, Florida Department of Environmental Protection, Manatee County, Florida:** Civil Engineer responsible for support with engineering design, including aerial base mapping, grading and drainage, utility design, plan drawings, and coordination with Southwest Florida Water Management District for the addition of two bathhouses located in Lake Manatee State Park. This project provided the design and permitting services for new restroom addition, accessibility improvements, utility design, and permitting at the park. DRMP performed an initial assessment to provide recommendations and cost estimates to help the park determine how to best upgrade their facilities. DRMP provided survey, geotechnical engineering, civil and architectural design, and permitting.

**Professional Registrations**

Engineering Intern  
No. 1100028163, Florida, 2024

**Education**

Bachelor of Sciences in Civil Engineering, University of North Dakota, 2022  
Bachelor of Arts in Psychology, Kent State University, Ohio, 2007

**Software Aptitude**

AutoCAD Civil 3D  
OpenRoads Designer (ORD)  
StormCAD  
StormWise (formerly ICPR)

**Professional Affiliation**

American Society of Civil Engineers (ASCE)  
American Institute of Steel Construction (AISC)  
Florida Engineering Society (FES) - Calusa Chapter



Lonnie L. Lomski  
Principal In-Charge

**EDUCATION**

High School Diploma  
Associate in Arts, Civil Engineering

**YEARS OF EXPERIENCE**

Total: 30

**TIN#**

L52053274

**FDOT QUALIFICATIONS**

Earthwork Construction Inspector, Level 1 and 2  
Asphalt Paving, Level 1 and 2  
Final Estimates, Level 1 and 2  
QC Manager  
Concrete Field Technician, Level 1  
Drilled Shaft Inspection  
Qualified Sampler  
LBR Technician

**CERTIFICATIONS**

ACI Concrete Field Level 1  
ACI Aggregate Base Technician  
ACI Concrete Transportation Construction Inspector  
ACI Aggregate Inspector Level 1  
NICET - National Institute for Certification of Engineering Technologies, Level II - Soils  
NICET - National Institute for Certification of Engineering Technologies, Level II - Concrete  
NICET - National Institute for Certification of Engineering Technologies, Level II - Asphalt  
FDOT Information Management Module 2, Lims Laboratory  
CPN Nuclear Gauge Safety Course  
Humboldt Scientific Radiation Safety Officer  
FDOT Advanced MOT  
FDEP Erosion Control Inspector  
MSE Wall Inspector Course  
Auger Cast Pile Inspector  
IMSA – Associate Member #99597

**CONTACT:**

17210 Toledo Blade Boulevard  
Port Charlotte, FL 33954  
(941) 979-5744  
llomski@let-fl.com

Mr. Lomski has over 30 years of experience involving geotechnical design parameters, construction materials testing, and construction inspection services. Mr. Lomski is currently acting as the Vice President in charge of construction and geotechnical services. Prior to this he held a variety of project management positions, including office leader, construction services manager, profit center managing leader, project manager, laboratory manager, CEI project administrator, and construction inspector. He has exceptional project management skills that have resulted in consistently completing major projects on-time and within, or under budget. During his career he has been recognized as a leader by partnering with clients and contractors to building exceptional relationships based on trust, responsiveness, and integrity

**Geotechnical Project Manager, RSW Airside Pavement Rehabilitation - Fort Myers, Florida, 2016-2018.** Mr. Lomski was the geotechnical project manager responsible for project coordination, sample data analysis, and report preparation. Lomski Engineering’s scope of work included performing 161 Standard Penetration Test borings, as well as 179, 6-inch pavement cores to evaluate the existing pavement and subsurface condition as the relate to possible rehabilitation parameters.

**Geotechnical Project Manager, Burnt Store Road Phase 2 - Port Charlotte, Florida, 2016-2018.** Mr. Lomski was the geotechnical project manager responsible for project coordination, sample data analysis, and report preparation. Lomski Engineering’s scope of work included performing roadway soils survey, pond and signal borings, as well as pavement cores to evaluate the existing pavement section. The proposed project consisted of 2.8 miles of widening and new pavement construction.

**Geotechnical Project Manager, Flamingo Boulevard Improvements - Port Charlotte, Florida, 2021-2023.** Mr. Lomski was the geotechnical project manager responsible for project coordination, sample data analysis, and report preparation. Lomski Engineering’s scope of work included performing roadway soils survey, pond and signal borings, as well as pavement cores to evaluate the existing pavement section. The proposed improvements consist of 3.5 miles of new roadway with signalization and 6 bridges.

Additional Representative Projects:

- US 41 at West Villages Signal Improvements: Responsible for Geotechnical exploration for signal foundation design, as well as drilled shaft inspection during installation of proposed foundations.
- Avenue of the Americas Signal Improvements: Responsible for Geotechnical exploration for signal foundation design.
- Kings Highway Widening: Responsible for Geotechnical exploration for roadway soils profiling, existing roadway coring, and pond borings, as they relate to the future pavement design.
- Fire Station No 5 Collingswood Blvd: Responsible for Geotechnical exploration for signal foundations, as well as proposed pavement design parameters.

# TAB III

## PREVIOUS EXPERIENCE OF TEAM PROPOSED FOR THIS PROJECT



### Coral Ridge Drive

FDOT District Four | Broward County, Florida

DRMP provided Survey and Subsurface Utility Engineering management for the design survey of the widening, milling and resurfacing of the existing off-system 4-lane divided highway from Southgate Boulevard to Holmberg Road, approximately 5.5-miles within the City of Coral Springs. The project consisted of widening the road to add buffered bike lanes, adding sidewalk at gap locations, performing drainage upgrades, providing signing and pavement markings and improving substandard ADA elements. In addition, this project upgraded existing intersection signals to mast arms at West Atlantic Boulevard, Royal Palm Boulevard, West Sample Road, Wiles Road, Westview Drive and Sawgrass Expressway. Coral Ridge Drive between Southgate Boulevard and Holmberg Road is a heavily residential area with large pockets of commercial properties and required a significant public involvement effort. This project included utility coordination, permitting, survey and geotechnical exploration.



**Date Completed:** 2023  
**Client:** Anson Sonnett  
**P:** 954.777.4474



**Patsy Fuschetto, PE, serving as our Lead Designer,** served as a project engineer providing QA/QC for the signalization plans where two signalized intersections were upgraded from concrete strain pole/span wire to mast arms. Work included new pedestrian signals for the widened intersections along with a new electrical service and controller cabinet assembly.

### SR-70 at Midway Road

*FDOT District Four | St. Lucie County, Florida*

DRMP was responsible for the installation of an offset right turn lane for the SR 70/ Okeechobee Road eastbound traffic at Midway Road to improve the northbound left turn visibility and reduce conflicts with the eastbound through traffic. Design included roadway geometry, pavement design, temporary traffic control, drainage, utility coordination and signing and pavement markings.



**Date Completed:** 2020

**Client:** Rana Keel | FDOT District 4 Traffic Operations

**P:** 954.777.4079

**SR 5/US-1 at NE 10th Street**

*FDOT District Four | Pompano Beach, Florida*

DRMP was responsible for the addition of an eastbound right turn lane along NE 10th Street at the SR 5/US-1 intersection that allowed for the separation of the existing shared left turn/through lane. The existing signalized intersection was operating as a split phase and was converted to concurrent phasing. The proposed right turn lane was 280 feet and included roadway design, temporary traffic control, drainage, pavement design, signalization improvements, roadway lighting, signing and pavement markings and utility coordination.



**Patsy Fuschetto, PE,** serving as our **Lead Designer**, served as the project manager for this Traffic Operations Push Button task work order during the post design / construction phase coordinating

RFIs, shop drawings and utility coordination for unforeseen utility conflicts. The project included the addition of an eastbound right turn lane in order to separate the shared thru/left turn lane thereby removing the split phase signalization and moving to a concurrent signal phase.



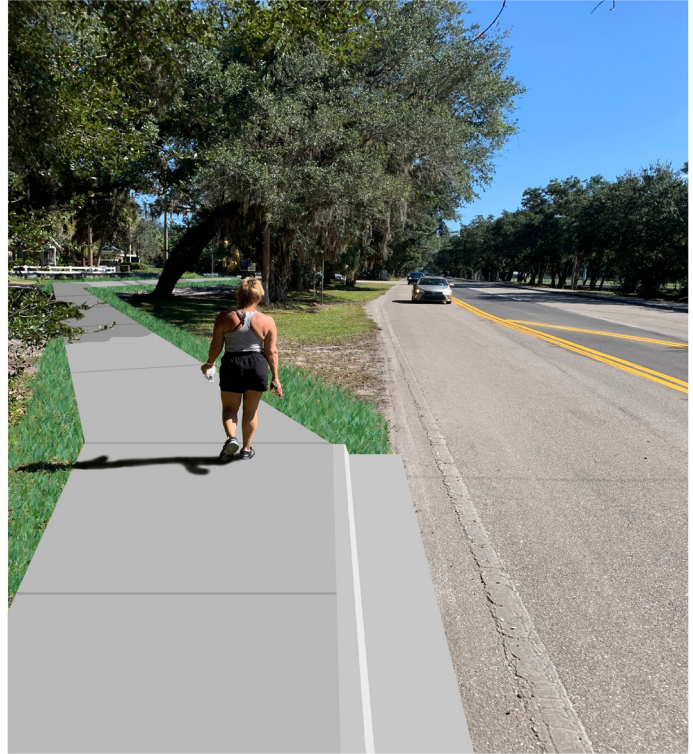
**Date Completed:** 2022  
**Client:** Rana Keel | FDOT District 4 Traffic Operations  
**P:** 954.777.4079

**Quesada Avenue Sidewalk, Florida**  
*Charlotte County, Florida*

DRMP provided professional engineering services for this project under a continuing services contract with Charlotte County. The Quesada Avenue Sidewalk project included the design of a six-foot-wide pedestrian sidewalk along the north side of Quesada Avenue running from Cochran Boulevard to Forrest Nelson Boulevard. The project involved the site plan engineering design of a concrete sidewalk, including site layout, plan and profiles, and cross sections.

The project qualified for an Environmental Resource Permit (ERP) Exemption from the Southwest Florida Water Management District (SWFWMD) but due to the meandering alignment crossing over existing swales, DRMP had to prove cup-for-cup volume capacity of the swales and flow characteristics of the culvert pipes to ensure no negative impacts were made upstream.

A key challenge we had to contend with was an existing box culvert that had no available historical data. Its existing headwall, protected by an existing guardrail was about 3 feet below the pavement and only 10 feet to the north. Without modifying the box culvert, headwall, wing walls, or drainage canal we developed a cost-effective offset-elevation barrier wall to protect vehicles from the hazard, pedestrians from vehicles, and pedestrians from falling into the canal.



**Date Completed:** 2025  
**Client:** Ray Slade  
**P:** 941.575.3600



# TAB IV

## PROJECT CONTROL



# DESIGN VARIOUS TURNING LANE IMPROVEMENTS

Tab IV. PROJECT CONTROL

## Schedule

Project Name: Charlotte County, Florida Design of Various Turning Lane Improvements		2026						2027								
Task	Dates	JUL	AUG	SEP	OCT	NOV	DEC	JAN	FEB	MAR	APR	MAY	JUN	JUL	AUG	SEP
Notice to Proceed/Kickoff	07/2026	★														
Design Survey and Designates	09/2026															
<b>30% Design</b>																
30% Submittal	12/2026															
Charlotte County Review & Field Review	01/2027															
<b>60% Design</b>																
SUE	02/2027															
Geotechnical Services	02/2027															
60% Plans Submittal	04/2027															
Charlotte County Review	06/2027															
Utility Coordination Meeting	06/2027															
Public Meeting	06/2027															
<b>90% Design</b>																
Specs	07/2027															
90% Plans Submittal	08/2027															
Charlotte County Review	09/2027															
<b>100% Design</b>																
100% Plans Submittal	09/2027															
Charlotte County Review	09/2027															

**Wrapped up at the end of the Fourth Quarter**

Q1
Q2
Q3
Q4

**A. SCHEDULE****1. WHAT TECHNIQUES ARE PLANNED TO ASSURE THAT SCHEDULE WILL BE MET?**

The DRMP Team is dedicated to meeting time and budget constraints while delivering excellent service. We prioritize scheduling, which directly influences project costs, and have the expertise and resources to ensure timely completion within budgetary limits. Similar to other projects, we will work with the County to ensure budget, schedule and funds are managed judiciously to ensure a successful project.

**Willingness to Meet Schedule Requirements**

DRMP's consultant statewide schedule scores (3.9/5) are proof of our ability to keep projects on schedule and within budget. Our ability to meet schedules and set budgets is by performing a detailed review of the scope of services alongside field reviews and construction cost estimate. When scope/field/cost estimate comparisons take place, unique milestones, approvals, review periods and potential design delays are revealed. Special events are inserted into the schedule to identify potential additional delays. This allows the County and our team to address schedule conflicts proactively. We can allocate extra resources, initiate reviews earlier, and plan decision-making milestones well ahead of critical path deadlines.

**Project Techniques****Assigned Project Personnel**

The success of any project depends on the right personnel. Mr. Benvie will ensure the initial project organization and set-up is completed before developing the Project Management Plan (PMP). The PMP will provide a clear definition of individual tasks to be performed, including schedule and budget parameters for each phase of the project.

**Design Team Meetings**

Bi-weekly team meetings will track progress and establish 30, 60 and 90-day lookaheads. During these meetings, we'll review staffing needs and decide on additional support if required. We will maintain constant communication between DRMP and the County.

**Monthly meetings with county**

Monthly meetings with the County's Project Manager will ensure ongoing project advancement. Mr. Benvie will submit progress reports well ahead of these meetings for thorough review.

Progress reports include:

- Key activities, issues and resolution status
- Risk identification and mitigation status
- Submittal status
- Schedule Status
- Budget Status
- Agency Coordination and Permitting Status

**Critical task driving the schedule**

The utility coordination process will drive the schedule on this project. As part of our preliminary research DRMP requested a Sunshine 811 design ticket for each of the project areas to identify the potential utility agency owners (UAO). This information was provided in the design approach section. Early coordination will allow our team to stay out ahead of the project schedule and provide the necessary utility information during the initial design phase to minimize any rework due to utilities. Below is our utility coordination process.

1. Establish contact with the identified UAOs within the project limits and request plan mark-ups or as-built drawings. Identify any utility easements or permit agreements that may impact utility adjustments and relocations if required.
2. Collect utility designates, quality level B, for all identified utility facilities during the initial survey.
3. Implement a design that incorporates the utility information and avoids any utility conflicts to the greatest extent feasible.
4. Hold a 60% utility design meeting with UAOs to discuss the proposed design and any current conflicts.
5. Confirm utility locations in close proximity to the design elements with subsurface utility exploration (SUE), quality level A, and incorporate any additional adjustments.
6. Hold a 90% utility design meeting with all UAOs to finalize any required utility adjustments or relocations.

**2. WHO WILL BE RESPONSIBLE TO ASSURE THAT SCHEDULE WILL BE MET?**

Our project manager, Mr. Benvie, will be responsible to assure the schedule is met.



## B. COST

### 1. WHAT CONTROL TECHNIQUES ARE PLANNED?

A successful project hinges on establishing a good plan from day one and executing that plan, while making prompt adjustments as situations arise.

#### Project planning

- **SCOPE MEETING:** During negotiations, we will hold a meeting with the County PM and team members. This meeting will strengthen our work plan by increasing our understanding of the County's goals, objectives, deliverables, schedule, and budget. Additionally, this meeting will serve as a "brainstorming session" enabling our team the ability to eliminate unnecessary efforts and needless costs.
- **SCOPE OF SERVICES:** Additionally, we work diligently to streamline the scope of work necessary to accomplish project objectives and strictly control budgeted service hours. Cost control is a priority during project development.
- **BUDGET AND DESIGN FEE:** Our team is sensitive to the budget limitations of public works projects, including overall costs and our service fees. We minimize fees by selecting the appropriate project personnel required for each assignment.

#### Project Execution

- **INTEGRATED COST CONTROL SOFTWARE:** DRMP uses the Deltek Vantagepoint program for project accounting, budgeting and monitoring. Upon contract execution, Project Manager, Mr. Benvie, will establish the level of detail to be used and how negotiated staff hours will be monitored. Our electronic time-sheet system and expenses system are automatically linked to Vantagepoint allowing close monitoring of a project on a weekly basis.
- **COST MONITORING:** We start by evaluating the budget and preparing detailed preliminary estimates using current County unit prices. If discrepancies arise, we work to align estimates with the budget and, if needed, collaborate with the County's project manager to develop cost reduction strategies.
- **COST SAVING MEASURES:** DRMP will implement cost-saving measures throughout the project to stay on budget. Including considering alternatives during the study phase. Once approved, DRMP will manage scope and design to prevent cost increases.
- **DURING CONSTRUCTION COST:** We will collaborate with the construction engineer, addressing issues promptly and working closely with the County and contractor to prevent delays.

### 2. DEMONSTRATE ABILITY TO MEET PROJECT COST CONTROL

#### Controls to meet budget Requirements

DRMP uses the Deltek Vantage Point program for project accounting, budgeting and monitoring. Upon contract execution, Project Manager, Mr. Benvie, will establish the level of detail to be used and how negotiated staff hours will be monitored. Our electronic time-sheet system and expenses system are automatically linked to Vantagepoint allowing close monitoring of a project on a weekly basis.

Our team is sensitive to the budget limitations of public works projects, including overall costs and our service fees. We minimize fees by selecting the appropriate project personnel required for each assignment. Additionally, we work diligently to streamline the scope of work necessary to accomplish project objectives and strictly control budgeted service hours.

Cost control is a priority during project development. We start by evaluating the budget and preparing detailed preliminary estimates using current County unit prices. If discrepancies arise, we work to align estimates with the budget and, if needed, collaborate with the County's project manager to develop cost reduction strategies.

#### COST SAVING MEASURES

DRMP will implement cost-saving measures throughout the project to stay on budget. Including considering alternatives during the study phase. Once approved, **DRMP will manage scope and design to prevent cost increases**. During construction, we will collaborate with the construction engineer, addressing issues promptly and working closely with the County and contractor to prevent delays.

### 3. WHO WILL BE RESPONSIBLE FOR COST CONTROL?

Our project manager, Mr. Benvie, will have the responsibility for cost control. He is able to do this by the experienced and competent team supporting him and their vast experiences on similar projects.

**C. RECENT, CURRENT, AND PROJECTED WORKLOAD**

**TEAM COMMITMENT**

Our team has been carefully structured to provide exceptional service and experienced staff. We commit the key team members identified on our organizational chart will be available to the County during this contract. DRMP’s 30-member structures group, along with over 300 firm wide engineers, inspectors, planners and surveyors give us unmatched flexibility to handle this project’s schedule and any unforeseen events. Furthermore, we have carefully selected trusted subconsultants to augment our staff and capabilities.

**PROJECTED WORKLOAD**

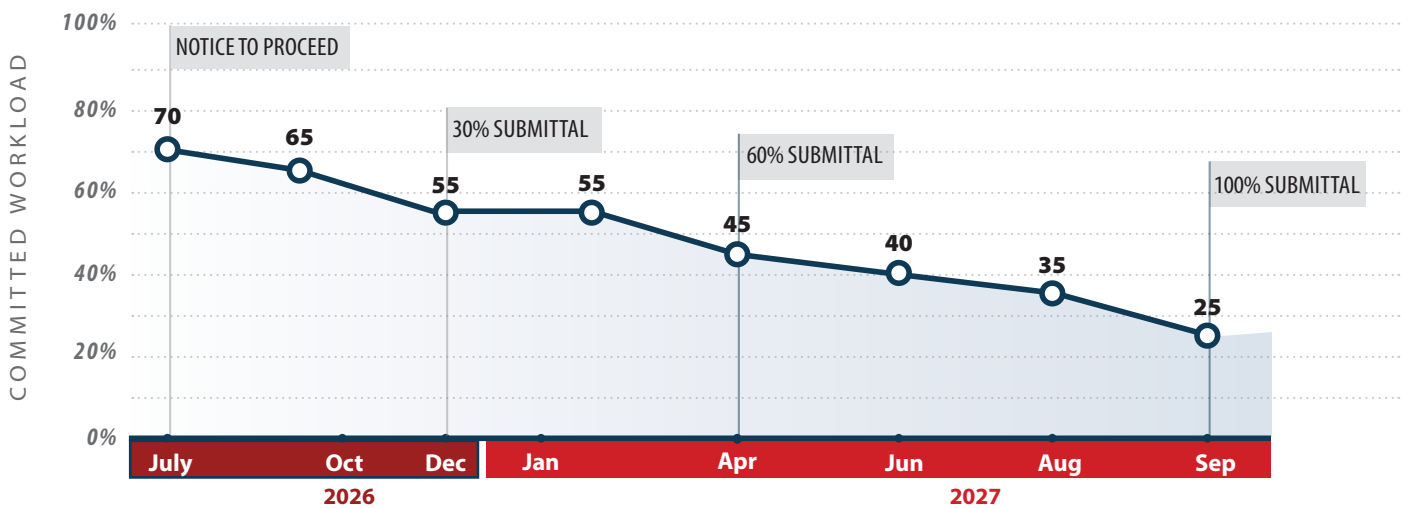
Our proposed key personnel is currently seeing a decrease in their committed workload and long-term project commitments. We have provided a graphical representation of our projected workload percentages below.

**RECENT AND CURRENT WORKLOAD**

DRMP’s current workload is such that we could easily complete this project in a timely manner. Project Manager, Paul Benvie, PE, and our team of key personnel are immediately available to provide responsive, high-quality services on a daily basis.

**STAFF AVAILABILITY**

<b>AMANDA WOODS, PE</b> <i>Vice President-In-Charge</i>	65%	
<b>PAUL BENVIE, PE</b> <i>Project Manager/Point of Contact</i>	80%	
<b>PATSY FUSCHETTO, PE</b> <i>Lead Designer   Roadway</i>	75%	
<b>ALAN KING, PE</b> <i>Quality Assurance/Quality Control</i>	65%	
<b>CHRISTINE DALICKAS, PE</b> <i>Signing &amp; Pavement Marking/Lighting</i>	75%	
<b>KYLE GOODWIN, PE</b> <i>Utility Coordination</i>	65%	
<b>EVHEN KYJ, PE</b> <i>TTC</i>	65%	
<b>BILL CURTIS</b> <i>Survey</i>	65%	
<b>LONNIE LOMSKI</b> <i>Geotechnical</i>	65%	



# TAB V

PRESENT PROPOSED DESIGN APPROACH FOR THIS PROJECT

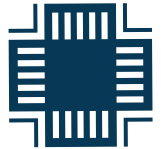


## V. PRESENT PROPOSED DESIGN APPROACH FOR THIS PROJECT

### PROJECT UNDERSTANDING

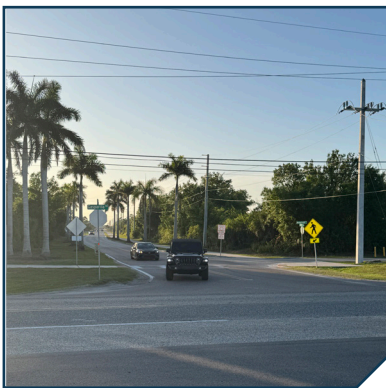
We understand the primary objective of this project is to provide turn lane improvements at the following intersections: Gasparilla Road at Keystone Boulevard, Gasparilla Road at San Domingo Boulevard, Paulson Drive/Murdock Circle at Veterans Boulevard, Enterprise Drive at El Jobean Road (SR 776) and Elkcamboulevard at Midway Boulevard and signal hardening at the intersections of Education Way at Murdock Circle and Education Way at Cochran Boulevard.

Each of the intersection improvements will meet criteria shown in the Manual of Uniform Minimum Standards for Design, MUTCD (Manual on Uniform Traffic Control Devices) Construction and Maintenance for Streets and Highways (Florida Greenbook) as well as any applicable Charlotte County standards at a minimum. FDOT Standards Plans and FDOT FDM criteria will be reviewed and used where possible.



Depending on the County's preference and fiscal obligations, our team is capable of preparing one set of construction plans encompassing all of the intersections, or with multiple construction plans that either construct each of the intersections individually or in a grouping that fits the County's needs.

Our team has reviewed the proposed improvements for each of the intersections and have summarized the existing and proposed conditions below.



#### **GASPARILLA ROAD AT KEYSTONE BOULEVARD**

The existing ROW for this location appears to be 80 feet in total and we don't believe that additional ROW will be needed to provide a westbound right turn lane at this intersection. The posted speed for Gasparilla Road is 55 mph and 45 mph for Keystone Boulevard. The travel lane widths along Keystone Boulevard are approximately 12-feet wide with existing curb that begins at Agate Street and ends approximately 110 feet from the Gasparilla Road intersection. Existing flumes are present along both sides of Keystone Boulevard as well as a pipe culvert under Keystone Blvd at the intersection with Gasparilla Road.

There are existing overhead utilities within the project location that includes overhead power poles in both the NE and SE quadrants of the Gasparilla Road-Keystone Boulevard intersection where a luminaire is mounted on the power pole in the SE quadrant. The existing power lines then run along the south side of Keystone Boulevard. Through a utility locate request from Sunshine 811, it was determined that there are five possible utilities within the intersection (Centurylink, Fiber and Telephone, Charlotte County Utilities-SW, Water and Sewer, Comcast, Cable, Florida Power & Light-Charlotte, Electric and Gasparilla Island Water Association, Inc, Water and Sewer). Coordination with these utility owners will ensure any potential conflicts will be at a minimum, if at all.

#### **Anticipated Problems**

There is an existing frontage road (Winborough Dr) on the south side of Keystone Boulevard just to the east of the intersection that will need to be addressed during the construction phase. A detour along the roadway will provide drivers with an alternate route to Gasparilla Road and Keystone Boulevard. There will be impacts to the existing landscape as there will be at least 2 palm trees that will need to be relocated or removed. Coordination with Charlotte County will provide direction as to what is to be done with these trees. In addition, there will be impacts to some of the existing signage along the north side of Keystone Boulevard.

**V. PRESENT PROPOSED DESIGN APPROACH FOR THIS PROJECT****GASPARILLA ROAD AT SAN DOMINGO BOULEVARD**

The existing ROW for this location appears to be 80 feet in total and we don't believe that additional ROW will be needed to provide a westbound right turn lane at this intersection. The posted speed for Gasparilla Road is 55 mph and 45 mph for San Domingo Boulevard. The travel lane widths along San Domingo Boulevard are approximately 11-feet wide with existing curb on both sides of San Domingo Boulevard. Drainage currently utilizes existing flumes along both sides of San Domingo Boulevard.



There are existing overhead utilities within the project location that includes overhead power lines at the intersection of Wilshire Drive, a frontage road just to the east of Gasparilla Road. The existing power lines then run along the south side of San Domingo Boulevard. A design ticket from Sunshine 811 indicates that there are seven possible utilities within the intersection (Centurylink, Fiber and Telephone, Charlotte County Lighting District, Electric and Fiber, Charlotte County Utilities-SW, Water and Sewer, Comcast, Cable TV, Florida Power & Light-Charlotte, Electric, Hotwire Communications, Cable TV, Fiber and Telephone and Forged Fiber 37 LLC, Fiber). Coordination with these utility owners will ensure any potential conflicts will be at a minimum.

**Anticipated Problems**

There is an existing frontage road (Wiltshire Dr) on both sides of San Domingo just to the east of the intersection that will need to be addressed during the construction phase. A detour along the roadway will be provided directing drivers an alternate route to Gasparilla Road and San Domingo Boulevard. There will be impacts to abutting property owners including driveways and mailboxes between the edge of pavement and the ROW. Our team can support the County with creating a "good-neighbor partnership" to work through the impacts the turn lane widening may create.

**PAULSON DRIVE/MURDOCK CIRCLE AT VETERANS BOULEVARD**

The existing ROW for Paulson Drive is 80 feet in total and the ROW for Veterans Blvd is 200 feet in total. We don't believe that additional ROW will be needed to provide a southbound thru lane or the westbound right turn lane. The existing westbound left turn lane will be extended as part of the intersection improvements. The posted speed limit for Paulson Drive/Murdock Circle is 30 mph while the posted speed limit for Veterans Boulevard is 45 mph. The travel lanes along Paulson Drive and Veterans Boulevard are approximately 12-feet wide with existing open drainage. The travel lanes along Murdock Circle are approximately 11-feet wide and also utilizes an existing open drainage system.

There are existing overhead power lines crossing all legs of the intersection with the exception of the east leg. A design ticket from Sunshine 811 indicates that there are ten possible utilities within the project limits. (Centurylink, Fiber and Telephone, Charlotte County Lighting District, Electric and Fiber, Charlotte County Utilities-NE, Water and Sewer, Comcast, Cable TV, Crown Castle NG, Fiber, Florida Power & Light-West Fiber, Fiber, Florida Power & Light-Charlotte, Electric, MCI, Communications, Fiber, TECO Peoples Gas- Ft. Myers, Gas and Forged Fiber 37, LLC, Fiber). Coordination with these utility owners will ensure any potential conflicts will be at a minimum.

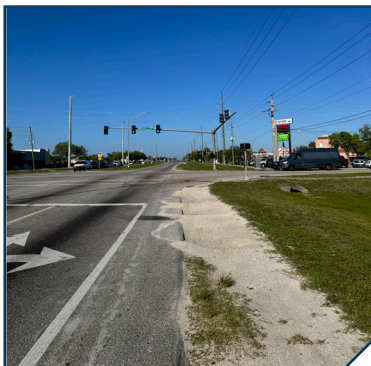
## V. PRESENT PROPOSED DESIGN APPROACH FOR THIS PROJECT

### Anticipated Problems

There will be impacts to the existing mast arm located in the NW quadrant for the proposed southbound right turn lane along Paulson Drive. A new mast arm in the NW quadrant will be proposed to mitigate the potential conflict with the proposed southbound turn lane and will provide proper lateral offset from the edge of travel. Curb and gutter with flumes along with swale regrading will address anticipated drainage flows.



With the widening along westbound Veterans Blvd, there will be impacts to the existing pedestrian concrete pad in the NE quadrant. This existing pedestrian concrete pad will be replaced to provide sidewalk connectivity. The existing swale will be regraded potentially maintaining the existing cross drain across Veterans Blvd. In addition, there could be impacts to the existing light pole within the grassed median due to the westbound left turn lane extension. Coordination with Charlotte County Lighting District will occur to determine the best location for existing light pole.



### ENTERPRISE DRIVE AT EL JOBEAN ROAD (SR 776)

The existing ROW for Enterprise Drive is 100 feet in total. We don't believe that additional ROW will be needed to provide a southbound right turn lane. The posted speed limit for Enterprise Drive is 30 mph. The travel lanes along Enterprise Drive are approximately 11-feet wide with a varying width gore area separating northbound and southbound traffic south of Market Cir. Existing drainage is conveyed by means of an open drainage system.

### Site-Specific Alternative

The existing pavement width along Enterprise Dr can accommodate a southbound right turn lane with a minimal amount of widening and restriping the entire roadway. First the roadway is milled and resurfaced to remove the existing pavement markings and one northbound thru, along with one thru, one right turn and one left turn southbound lanes that would be provided at this intersection. With this approach, there will be minimal impacts to the existing swales, utilities and the connectivity to El Jobean Rd along with considerable cost savings. The location of 5-section signal head facing the southbound left may need to be adjusted for this improvement.

There are overhead power lines crossing the north, south and east legs of this intersection. A design ticket from Sunshine 811 indicates that there are eight possible utilities within the project limits. ( Centurylink, Fiber and Telephone, Charlotte County Lighting District, Electric and Fiber, Charlotte County Utilities-NE, Water and Sewer, Comcast, Cable TV, Crown Castle NG, Fiber, Florida Power & Light-Charlotte, Electric, MCI, Communications, Fiber, and TECO Peoples Gas- Ft. Myers, Gas). Coordination with these utility owners will ensure any potential conflicts will be at a minimum.

## V. PRESENT PROPOSED DESIGN APPROACH FOR THIS PROJECT

### Anticipated Problems

As El Jobean Road is part of the FDOT state highway system, coordination with FDOT permitting is anticipated to complete the proposed work at this location.

### ELKCAM BOULEVARD AT MIDWAY BOULEVARD

The existing ROW for Elkcarn Boulevard is 70 feet in total. We don't believe that additional ROW will be needed to provide a northbound right turn lane. The posted speed for Elkcarn Boulevard is 35 mph. The travel lane widths along Elkcarn Boulevard are approximately 9-feet wide with a flush roadway utilizing swales for drainage conveyance that transitions to curb and gutter at the intersection of Midway Boulevard.

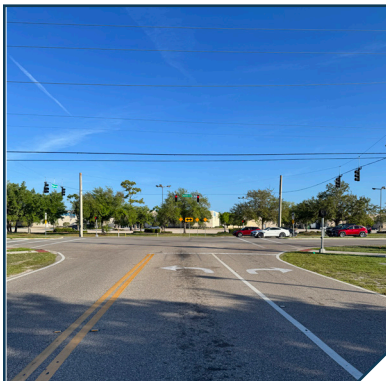


There are existing overhead utilities within the project location. Overhead power lines run along the east side of the roadway. A design ticket from Sunshine 811 indicates that there are ten possible utilities within the project limits. (Centurylink, Fiber and Telephone, Charlotte County Lighting District, Electric and Fiber, Charlotte County Utilities-NE, Water and Sewer, Comcast, Cable TV, Florida Power & Light-Charlotte, Electric, Hyper Fiber, Fiber, Tillman Fiberco Florida, Fiber, Forged Fiber 37, LLC, Fiber) and Lumos Fiber of Florida, LLC, Fiber. Coordination with these utility owners will ensure any potential conflicts will be at a minimum.



### Anticipated Problems

There is existing valley gutter crossing Elkcarn Boulevard as well as existing ditch bottom inlets behind the curb on both sides of the roadway. These features, in addition to the existing stamped asphalt crosswalk, trees along the east side and signage, will be impacted by the proposed right turn lane. The drainage structure, curb ramp, and signage on the east side, along with the impacted stamped asphalt crosswalk will need to be replaced. The existing swale will be regraded to provide positive drainage conveyance and connectivity. Our team can support the County with creating a "good-neighbor partnership" to work through the landscaping impacts the turn lane widening may create.



### EDUCATION WAY AT MURDOCK CIRCLE

Signal hardening for this intersection includes providing mast arms structures to replace the existing concrete strain poles. Coordination with the maintaining agency (Charlotte County Public Works) will occur to ensure standards and preferences are included in the design.

### Anticipated Problems

Three (3) mast arm structures are proposed at this intersection as well as pedestrian signals upgrades that meet current standards. Through a utility locate request from Sunshine 811, it was determined that there are a possible ten utilities within the intersection, (Centurylink, Fiber and Telephone, Charlotte County Lighting District, Electric and Fiber, Charlotte County Utilities-NE, Water and Sewer, Comcast, Cable TV, Crown Castle NG, Fiber, Florida Power & Light-Charlotte, Electric, TECO Peoples Gas- Ft. Myers, TECO Peoples Gas-Ft. Myers HP, Gas, Tillman Fiberco Florida, Fiber, and Forged Fiber 37, LLC, Fiber). Coordination with these utility owners will ensure any potential conflicts will be at a minimum.

## V. PRESENT PROPOSED DESIGN APPROACH FOR THIS PROJECT

Coordination with these utility owners to get their as-builts and/or utility markups as well as test hole information performed by our survey group, will ensure that the placement of the proposed poles will be in the best possible location to avoid and/or minimize conflicts. Our team will look to propose the mast arm locations that allows for the existing signals to remain during construction reducing the overall MOT and construction costs.

### EDUCATION WAY AT COCHRAN BOULEVARD

The existing wood strain poles at this intersection will be upgraded to mast arms to provide signal hardening. Coordination with the maintaining agency (Charlotte County Public Works) will occur to ensure standards and preferences are included in the design at this location as well.

### Anticipated Problems

Three (3) mast arm structures are proposed at this intersection that meet current standards. Through a utility locate request from Sunshine 811, it was determined that there are a possible nine utilities within the intersection (Centurylink, Fiber and Telephone, Charlotte County Lighting District, Electric and Fiber, Charlotte County Utilities-NE, Water and Sewer, Comcast, Cable TV, Crown Castle NG, Fiber, Florida Power & Light-Charlotte, Electric, Hyper Fiber, Fiber, Tillman Fiberco Florida, Fiber, and Forged Fiber 37, LLC, Fiber). Coordination with these utility owners to get their as-builts and/or utility markups as well as test hole information performed by our survey group, will ensure that the placement of the proposed poles will be in the best possible location to avoid and/or minimize conflicts while maximizing the lateral offset from the roadway and potentially utilizing the existing signal system during construction to offset temporary signalization needs.



# TAB VI

## PRESENT EXAMPLES OF RECENTLY ACCOMPLISHED SIMILAR PROJECTS



### A. DESCRIPTION OF PROJECTS TO DEMONSTRATE

#### 1. SCHEDULE CONTROL

DRMP's consultant statewide schedule scores (3.9/5) are proof of our ability to keep projects on schedule and within budget. Most recent project examples include:

**Quesada Avenue Sidewalk, Charlotte County, FL:**

Our Project Manager, Paul Benvie, and the DRMP Team were personally invested, willing and able to meet and exceed the County's time and budget requirements for this project.

**Cowboy Way Design and Permitting, Hendry County, Florida:**

This project shows DRMP has experience with roadway design in the Southwest Florida area. We have the capabilities to read and interpret plans prepared by other engineers and offer quick responses to requests for information without involving the intersection design engineers and we can help offer sound solutions to unforeseen issues that may develop in the field. Our projects with Hendry County was on schedule. ***There were no change orders throughout this project.***

#### 2. COST CONTROL

We understand the strain the recent inflationary tendencies have put on local agency budgets. Our strategy to overcome this matter and also limited budgets, is to have an honest and open conversation with the County PM at the scoping meeting regarding the available funds for design and construction. We use these numbers to come up with a "laundry list" of items that can done to achieve the County's goals. This approach has worked for us and has allowed us to keep our projects within budget.

DRMP will ensure that scope creep and issues during design do not create increase cost and provides the following independent reviews to ensure construction cost and project complexities are well understood.

**Peer Review:**

We engage senior staff not involved in the project to vet design solutions and identify complexity, potential liability exposure and other sensitive items.

**Constructability / Biddability Review:**

Our in-house CEI staff perform reviews help avoid errors and omissions in specifications and drawings and identify any potential construction constraints. CEI staff also ensures plans are sufficiently detailed to allow reasonable bidding by contractors.

**3. CONSTRUCTION PROBLEMS AND MEANS TAKEN TO SOLVE THEM**

Our team takes proactive steps to ensure construction problems do not arise. One of these steps involve plans-in-hand review.

**PLANS-IN-HAND REVIEW:**

On all of our projects, we performed field review scoping and plans-in-hand review during 60% plans. This has been a successful strategy in all of our projects with the County and has resulted in positive results. During those reviews, we go over every single aspect of our findings and proposed improvements with the County PM or Project Engineer. This gives us an ability to foresee any construction issues and nail down County's preferences.

Finally, during construction, we will work closely with the construction engineer to avoid delays, answering any questions in a timely manner and working closely with the county and contractor. Mr. Benvie has completed countless of tasks for contractors which involve construction errors or design modifications. His experience in resolving construction issues brings a unique and important perspective that would serve the Owner's interest.

**4. ANY ADDITIONAL CONSTRUCTION COSTS CAUSED BY DESIGN DEFICIENCIES, NOT PROGRAM CHANGES.**

Our team is dedicated to providing professional and competent design in every project we perform. We understand our reputation and the ability to continue working for the County hinges on the quality of our product. There are times when an unforeseen condition arises when our team has to proactively engage the Owner and Contractor to resolve the issue.

Most recently on our Englewood East/Gulf Cove MSBU's Bridge Rehabilitations, the asphalt layer was thicker than all available information indicated. This meant that the proposed joint repair required more quantity of a specialized material. We worked with the County to provide an alternative detail and revised drawings accordingly for as-builts. This allowed the County to avoid a costly change order.

# TAB VII

DESCRIBE YOUR EXPERIENCE AND CAPABILITIES IN THE FOLLOWING AREAS.



### VII. DESCRIBE YOUR EXPERIENCE AND CAPABILITIES IN THE FOLLOWING AREAS.

#### **A. VALUE ENGINEERING**

Our team has extensive experience in design-build projects. These projects require innovative ideas that save cost and provide a better value for the Owner. Our Project Manager, Paul Benvie, PE, has teamed up with several contractors to come up with such innovative solutions through Value Engineering and re-designs.

#### **B. UTILITY COORDINATION**

Utility system improvements require utility coordination to avoid potential conflicts encountered during the construction phase of the projects. DRMP has the capability to perform subsurface utility excavations for utility projects, as needed. Our team will research existing County as-builts and record drawings for the project limits, verify and compile a list of other utility vendors as stated above per the design ticket information from Sunshine (power, gas, telephone, etc.), order surface markings for each utility and communicate with County staff and the appropriate utility providers as needed to facilitate design efforts.

#### **C. CRITICAL PATH METHOD**

Our team is well versed in complex scheduling and has a great understanding of the benefits of the critical path method. By evaluating and discussing in design team meetings the critical path milestones, we ensure projects stay on schedule or take corrective actions if needed.

#### **D. TRAFFIC SIGNAL ITMS SYSTEMS AND TIMING**

Our team has extensive experience delivering Signalization and ITS plans throughout Florida.. For new signalization projects, we carefully consider underground and overhead utilities that influence signal pole placement, controller cabinet locations to avoid stormwater retention areas, and power service coordination. Understanding the requirements of the maintaining agency is also critical to successfully completing a signal design.

When existing interconnect systems are present, new signals are seamlessly integrated into the network. For projects involving reused signal equipment, we assess the condition and limitations of existing infrastructure to ensure compatibility. Other key considerations include controller type, software integration, pedestrian and bicycle traffic, minimizing impacts to property owners, and traffic phasing. Comprehensive field investigations are conducted as part of the design process in accordance with County, FDOT, and MUTCD standards. For ITS design, we address fiber routing, system architecture, utility coordination, slack fiber management, system equipment, CCTV placement, and access to signal cabinets. The process also includes preparing thorough contract documents such as Project Special Provisions, Quantity Estimates, and an engineer's cost estimate.

Signal System Timing Development and Implementation typically occurs after project completion. Signalization coordination timing is a cost-effective way to improve traffic flow along a corridor. This includes evaluating traffic volumes during peak periods, establishing travel times, developing new timing plans, and verifying changes with follow-up runs. Goals include reducing stops, conserving fuel, lowering emissions, and enhancing safety by reducing rear-end crash risk.

## VII. DESCRIBE YOUR EXPERIENCE AND CAPABILITIES IN THE FOLLOWING AREAS.

### E. SPECIALIZED EXPERIENCE

DRMP brings extensive specialized experience in the planning, design, and delivery of intersection and corridor improvements for local agencies throughout Florida. DRMP has successfully completed numerous projects involving turning lane analyses and design, signalization, safety enhancements, and multimodal accommodations in both urban and suburban contexts. This experience includes conducting traffic operational evaluations, developing cost-effective design solutions, and advancing projects through all phases from concept development to final design and construction support.

The multidisciplinary team integrates roadway engineering, traffic engineering, and construction services to provide seamless project delivery. DRMP is well-versed in preparing complete construction documents, including roadway plans, signing and pavement marking, maintenance of traffic (MOT), drainage, and utility coordination, all in accordance with FDOT standards and local agency requirements.

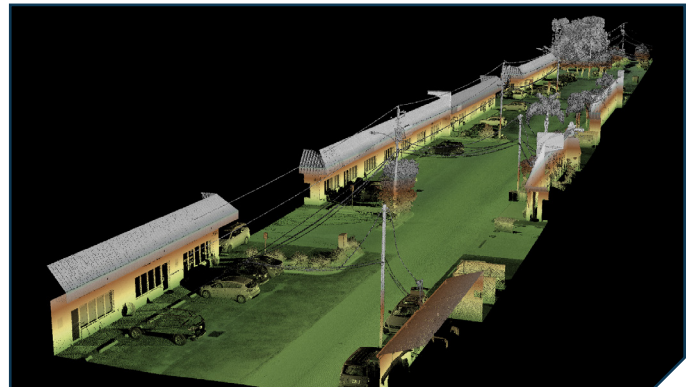
In addition to technical expertise, DRMP has a strong track record of managing continuing services contracts and delivering multiple task work orders concurrently while maintaining schedules and budgets. DRMP emphasizes proactive coordination with clients, stakeholders, and review agencies to streamline approvals and minimize delays. This depth of experience positions DRMP to efficiently deliver high-quality, constructible solutions that enhance safety and mobility for the communities they serve.

### SURVEY

DRMP also has one of the largest Survey groups in Florida with over 200 licensed surveyors, technicians and field staff. Our state-of-the-art terrestrial laser scanning (LiDAR), topographic surveying, unmanned aircraft system (UAS) mapping and vast resources provide the capacity to bring multiple crews on board simultaneously to handle large survey and subsurface utility engineering (SUE) efforts, if needed.



*The DRMP Mobile LiDAR Truck*



*An alley built from over a million LiDAR points*

# TAB VIII

VOLUME OF WORK – TOTAL OF PAYMENTS  
RECEIVED FROM COUNTY WITHIN THE PAST 24 MONTHS



**VIII. VOLUME OF WORK – TOTAL OF PAYMENTS RECEIVED FROM COUNTY WITHIN THE PAST 24 MONTHS**

**VOLUME OF WORK**

DRMP's volume of work, as evidenced by the total payments received from the county over the past 24 months, exceeds \$500,000. This substantial figure underscores our continued engagement and the significant contributions we have made to various projects and services for the county during this period.



# TAB IX

## LOCATION



IX. LOCATION

LOCATION

The majority of our services will be conducted at DRMP’s Ft. Myers office, strategically located near Charlotte County, which allows us to respond promptly to requests. Our familiarity with the area and the County itself enhances both our efficiency and service quality.

DRMP recognizes that responsiveness is a key measure of success and is committed to ensuring the successful completion of this project through reliability and responsiveness. Our team will offer the County technical expertise and knowledge, exceptional project management, and unwavering dedication to meet and exceed project expectations.

 **The County of Charlotte Purchasing Division**

 **DRMP Fort Myers Office**  
1715 Monroe Street #500  
Fort Myers, FL 33901  
*31 Miles to Client*

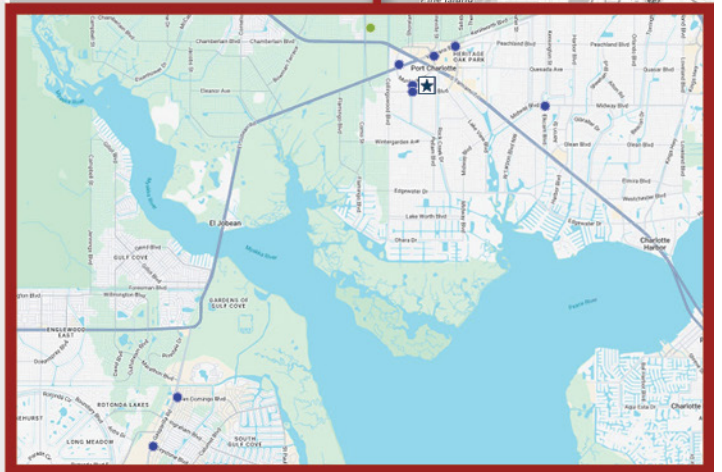
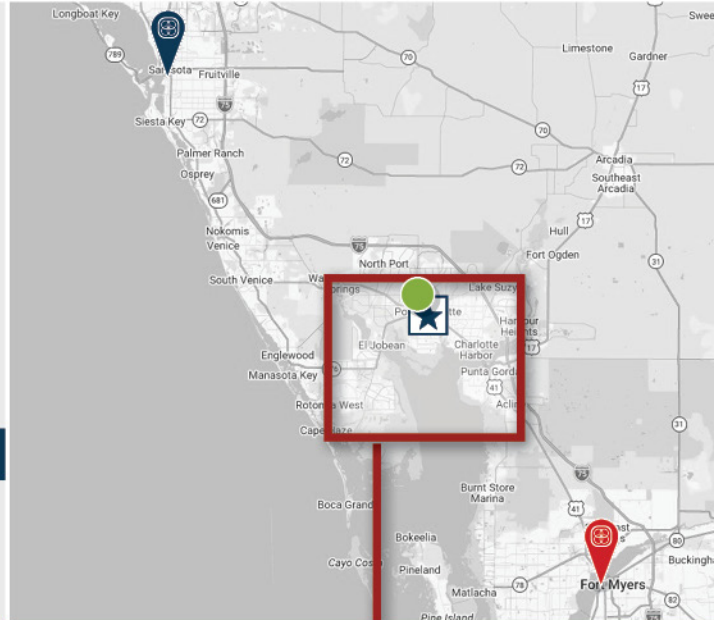
 **DRMP Sarasota Office**  
1990 Main Street, Suite 750, Office 770  
Sarasota, FL 34236

**Subconsultant:**

 **Lomski Engineering and Testing, Inc**  
17210 Toledo Blade Boulevard  
Port Charlotte, FL 33954

 **Project Location Intersections**

- Paulson Drive/Murdock Circle at Veterans Boulevard
- Enterprise Drive at El Jobean Road (SR776)
- Elkcam Boulevard at Midway Boulevard
- Gasparilla Road (CR771) at San Domingo Boulevard
- Gasparilla Road (CR771) at Keystone Boulevard
- Education Way at Murdock Circle
- Education Way at Cochran Boulevard



# TAB X

LITIGATION – HAVE YOU BEEN NAMED AS A  
DEFENDANT OR CO-DEFENDANT IN A LAWSUIT IN THE  
LAST FIVE YEARS?



### X. LITIGATION – HAVE YOU BEEN NAMED AS A DEFENDANT OR CO-DEFENDANT IN A LAWSUIT IN THE LAST FIVE YEARS?

#### LITIGATION STATEMENT - 5 YEARS (2021-2026)

**DRMP, Inc.** has never been the subject of an investigation conducted by a regulatory or professional licensing board.

DRMP has been subject to legitimate, frivolous and harassment lawsuits as a result of our actions or inactions in the 48-year course of the practice of our business. However, no litigation has occurred involving contractual issues. The following provides a detailed explanation of suits that occurred within the past 5 years.

**Timuquana Commerce Center Association.** DRMP was named as a co-defendant in a lawsuit brought against it by the Clay County Utility Authority. The suit alleged that there were design issues that lead to a pond berm failure that required modifications to the existing permit into compliance. The lawsuit was settled out of court in 2023.

**Clay County Utility Authority v. Beach Construction Company, Inc., et al.** DRMP was named as a co-defendant in a lawsuit brought against it by the Clay County Utility Authority. The suit alleged that there were design errors of the site work. DRMP argued that the problem with the constructed tank was misdiagnosed and that the repairs to the tank were improperly executed. DRMP argued that the repair to the tank created the failure and was avoidable. The lawsuit was settled out of court in 2024.

DRMP is not aware of other current or pending litigation to which we are a party.



# TAB XI

MINORITY BUSINESS



XI. MINORITY BUSINESS

**CERTIFIED MINORITY BUSINESS ENTERPRISE STATUS**

Although DRMP is not a MBE/WMBE, we do follow a stated policy of providing Minority/Women Owned Business Enterprises the maximum, practicable opportunity to participate in DRMP's procurement programs for provisions of materials, services, supplies and consultants. Each division is regularly reminded of this policy and is required to undertake efforts to acquire MBE/WMBE subconsultants and vendor services where practicable for the firm's projects.

DRMP maintains relationships with qualified minority business enterprises as certified by various municipalities and state agencies.

In addition, DRMP has made a commitment to an affirmative action and equal employment policy. It is our policy and practice to recruit and hire employees without regard to race, age, color, religion, sex, national origin or presence of a handicap.



# TAB XII

## Proposal Submittal Forms



**XII. PROPOSAL FORMS**

**PART IV - SUBMITTAL FORMS  
PROPOSAL SUBMITTAL SIGNATURE FORM**

<b>1.</b>	<b>Project Team</b> Name and Title	<b>Years experience</b>	<b>City of office individual will work out of for this project</b>	<b>City individual's office is normally located</b>	<b>City of individual's residence</b>
	Paul Benvie, PE   Project Manager	19	Fort Myers	Fort Myers	Fort Myers
	Amanda Woods, PE   Vice President-in-Charge	29	Orlando	Orlando	Orlando
	Alan King, PE   QA/QC	46	Orlando	Orlando	Orlando
	Patsy Fuschetto, PE   Lead Designer   Roadway	23	Fort Myers	Boca Raton	Boca Raton
	Christine Dalickas, PE   Signalization/Signing/Pavement Markings	23	Fort Myers	Boca Raton	Boca Raton
	Kyle Goodwin, PE   Utility Coordination	20	Fort Myers	Fort Myers	Fort Myers
	Evhen Kyj, PE   TTC	19	Fort Myers	Boca Raton	Boca Raton
	Bill Curtis   Surveying and Mapping/ SUE	13	Fort Myers	Tampa	Tampa
<b>2.</b>	<b>Magnitude of Company Operations</b>				
	A) Total professional services fees received within last 24 months:			\$	310.8M
	B) Number of similar projects started within last 24 months:				10+
	C) Largest single project to date:			\$	FTE Seminole \$26.4M
<b>3.</b>	<b>Magnitude of Charlotte County Projects</b>				
	A) Number of current or scheduled County Projects				1
	B) Payments received from the County over the past 24 months (based upon executed contracts with the County).			\$	210k
<b>4.</b>	<b>Sub-Consultant(s)</b> (if applicable)	<b>Location</b>	<b>% of Work to be Provided</b>	<b>Services to be Provided</b>	
	Lomski Engineering and Testing, Inc.	Port Charlotte, FL		Geotechnical Engineering	
<b>5.</b>	<b>Disclosure of interest or involvement:</b> List below all private sector clients with whom you have an active pending contract and who have an interest within the areas affected by this project. Also, include any properties or interests held by your firm, or officers of your firm, within the areas affected by this project.				
	Firm	N/A	Address		
	Phone #	Contact Name			
	Start Date	Ending Date			
	Project Name/Description				

NAME OF FIRM DRMP, Inc.

(This form must be completed and returned)

**XII. PROPOSAL FORMS**

<b>6. Minority Business:</b>	Yes _____ No <u>X</u>
The County will consider the firm's status as an MBE or a certified MBE, and also the status of any sub-contractors or sub-consultants proposed to be utilized by the firm, within the evaluation process.	
<b>Comments or Additional Information:</b>	

The undersigned attests to his/her authority to submit this proposal and to bind the firm herein named to perform as per contract, if the firm is awarded the Contract by the County. The undersigned further certifies that he/she has read the Request for Proposal, Terms and Conditions, Insurance Requirements and any other documentation relating to this request and this proposal is submitted with full knowledge and understanding of the requirements and time constraints noted herein.

By signing this form, the proposer hereby declares that this proposal is made without collusion with any other person or entity submitting a proposal pursuant to this RFP.

In accordance with section 287.135, Florida Statutes, the undersigned certifies that the company is not on the Scrutinized Companies with Activities in Sudan List, the Scrutinized Companies with Activities in the Iran Petroleum Energy Sector List, and does not have business operations in Cuba or Syria (if applicable) or the Scrutinized Companies that Boycott Israel List, or is not participating in a boycott of Israel.

As Addenda are considered binding as if contained in the original specifications, it is critical that the Consultant acknowledge receipt of same. The submittal may be considered void if receipt of an addendum is not acknowledged.

Addendum No. \_\_\_\_\_ Dated \_\_\_\_\_      Addendum No. \_\_\_\_\_ Dated \_\_\_\_\_      Addendum No. \_\_\_\_\_ Dated \_\_\_\_\_  
 Addendum No. \_\_\_\_\_ Dated \_\_\_\_\_      Addendum No. \_\_\_\_\_ Dated \_\_\_\_\_      Addendum No. \_\_\_\_\_ Dated \_\_\_\_\_

Type of Organization (please check one):      INDIVIDUAL      ( )      PARTNERSHIP      ( )  
    CORPORATION      (X)      JOINT VENTURE      ( )

DRMP, Inc.      407.896.0594  
 Firm Name      Telephone  
    59-1791174

\_\_\_\_\_  
 Fictitious or d/b/a Name      Federal Employer Identification Number (FEIN)

941 Lake Baldwin Lane  
 Home Office Address

Orlando, Florida, 32814      49  
 City, State, Zip      Number of Years in Business

1715 Monroe Street #500, Fort Myers, FL 33901  
 Address: Office Servicing Charlotte County, other than above

\_\_\_\_\_  
 Name/Title of your Charlotte County Rep.      Telephone  
 Amanda Woods, PE

\_\_\_\_\_  
 Name/Title of Individual Binding Firm (Please Print)  
  
 Signature of Individual Binding Firm      4/15/2026  
 Date

Amanda.Woods@drmp.com  
 Email Address

**XII. PROPOSAL FORMS**

**DRUG FREE WORKPLACE FORM**

The undersigned vendor in accordance with Florida Statute 287.087 hereby certifies that DRMP, Inc.  
does: (name of business)

1. Publish a statement notifying employees that the unlawful manufacture, distribution, dispensing, possession, or use of a controlled substance is prohibited in the workplace and specifying the actions that will be taken against employees for violations of such prohibition.
2. Inform employees about the dangers of drug abuse in the workplace, the business's policy of maintaining a drug-free workplace, any available drug counseling, rehabilitation, and employee assistance programs, and the penalties that may be imposed upon employees for drug abuse violations.
3. Give each employee engaged in providing the commodities or contractual services that are under bid a copy of the statement specified in subsection (1).
4. In the statement specified in subsection (1), notify the employees that, as a condition of working on the commodities or contractual services that are under bid, the employee will abide by the terms of the statement and will notify the employer of any conviction of, or plea of guilty or nolo contendere to, any violation of Chapter 893 or of any controlled substance law of the United States or any state, for a violation occurring in the workplace no later than five (5) days after such conviction.
5. Impose a sanction on or require the satisfactory participation in a drug abuse assistance or rehabilitation program if such is available in the employee's community, by any employee who is so convicted.
6. Make a good faith effort to continue to maintain a drug-free workplace through implementation of this section.

As the person authorized to sign the statement, I certify that this firm complies fully with the above requirements.

  
\_\_\_\_\_  
Proposer's Signature

16 April 2026  
Date

NAME OF FIRM DRMP, Inc.

(This form must be completed and returned)

**XII. PROPOSAL FORMS**

**HUMAN TRAFFICKING AFFIDAVIT  
for Nongovernmental Entities Pursuant To FS. §787.06**

**Charlotte County Contract #20260226**

The undersigned on behalf of the entity listed below, (the "Nongovernmental Entity"), hereby attests under penalty of perjury as follows:

1. I am over the age of 18 and I have personal knowledge of the matters set forth except as otherwise set forth herein.
2. I am an officer or representative of the Nongovernmental Entity and authorized to provide this affidavit on the Company's behalf.
3. Nongovernmental Entity does not use coercion for labor or services as defined in Section 787.06, Florida Statutes.
4. This declaration is made pursuant to Section 92.525, Florida Statutes. I understand that making a false statement in this declaration may subject me to criminal penalties.

Under penalties of perjury, I declare that I have read the foregoing Human Trafficking Affidavit and that the facts stated in it are true.

Further Affiant sayeth naught.



\_\_\_\_\_  
Signature

Amanda Woods, PE  
\_\_\_\_\_  
Printed Name

Vice President-in-Charge  
\_\_\_\_\_  
Title

DRMP, Inc.  
\_\_\_\_\_  
Nongovernmental Entity

16 April 2026  
\_\_\_\_\_  
Date

**END OF PART IV**

NAME OF FIRM DRMP, Inc.

(This form must be completed and returned)