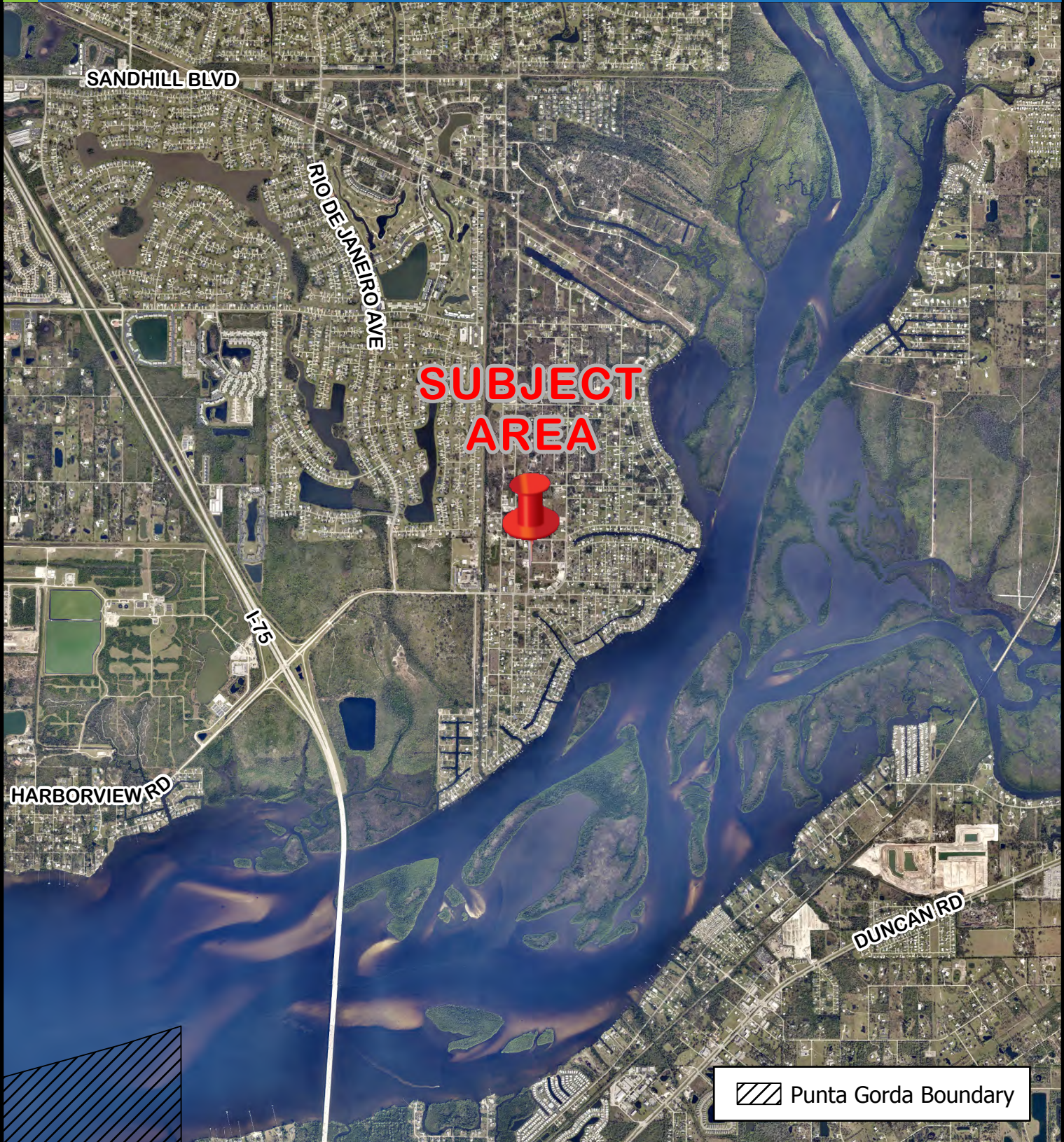


CHARLOTTE COUNTY

Location Map for VST-25-06



22/40/23 Mid-County



This map is a representation of compiled public information. It is believed to be an accurate and true depiction for the stated purpose, but Charlotte County and its employees make no guarantees, implied or otherwise, to the accuracy, or completeness. We therefore do not accept any responsibilities as to its use. This is not a survey or is it to be used for design. Reflected Dimensions are for informational purposes only and may have been rounded to the nearest tenth. For precise dimensions, please refer to recorded plats and related documents.

© Copyright 2026 Port Charlotte, FL by Charlotte County
Date Saved: 1/15/2026 9:37 AM By: Finnerty-SR30630

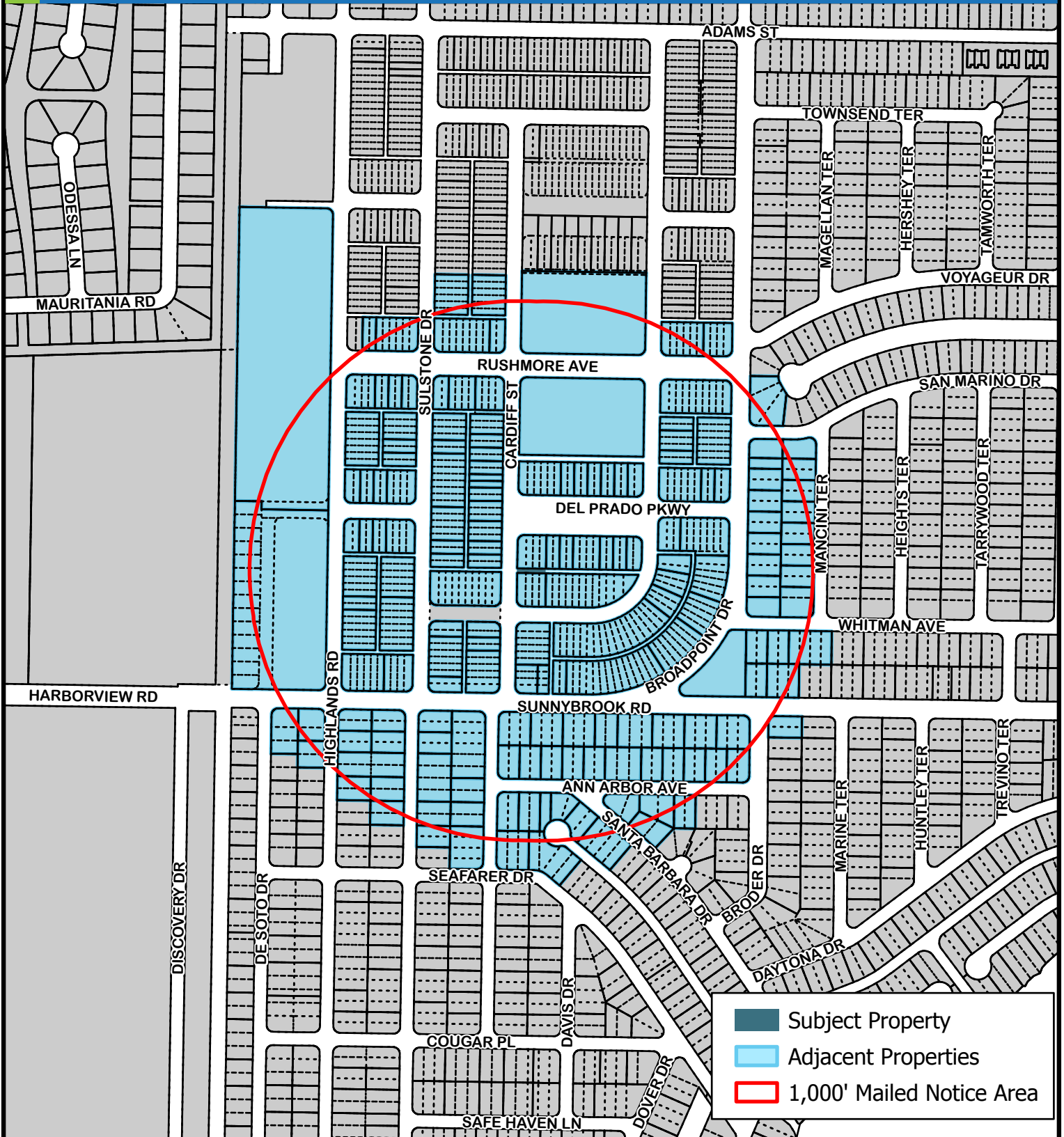
M:\Departments\LIS\Projects\Petition_Maps\Land_Development\2025\SV\ST-25-06\VST_25_06.aprx

CHARLOTTE COUNTY

1000' Mailed Notice Area for VST-25-06



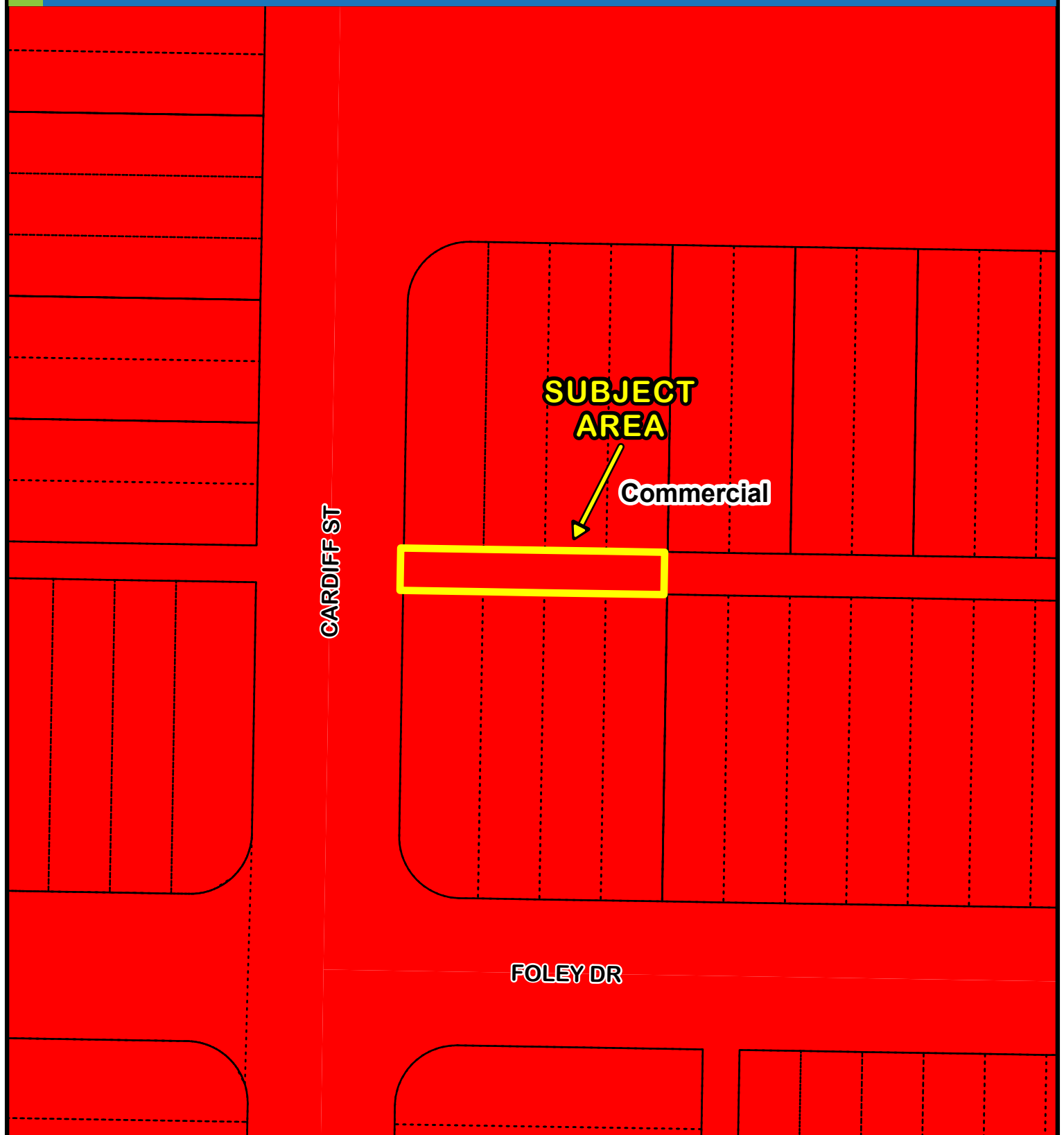
CHARLOTTE COUNTY
Community Development



22/40/23 Mid-County



This map is a representation of compiled public information. It is believed to be an accurate and true depiction for the stated purpose, but Charlotte County and its employees make no guarantees, implied or otherwise, to the accuracy, or completeness. We therefore do not accept any responsibilities as to its use. This is not a survey or it is to be used for design. Reflected Dimensions are for informational purposes only and may have been rounded to the nearest tenth. For precise dimensions, please refer to recorded plats and related documents.



22/40/23 Mid-County

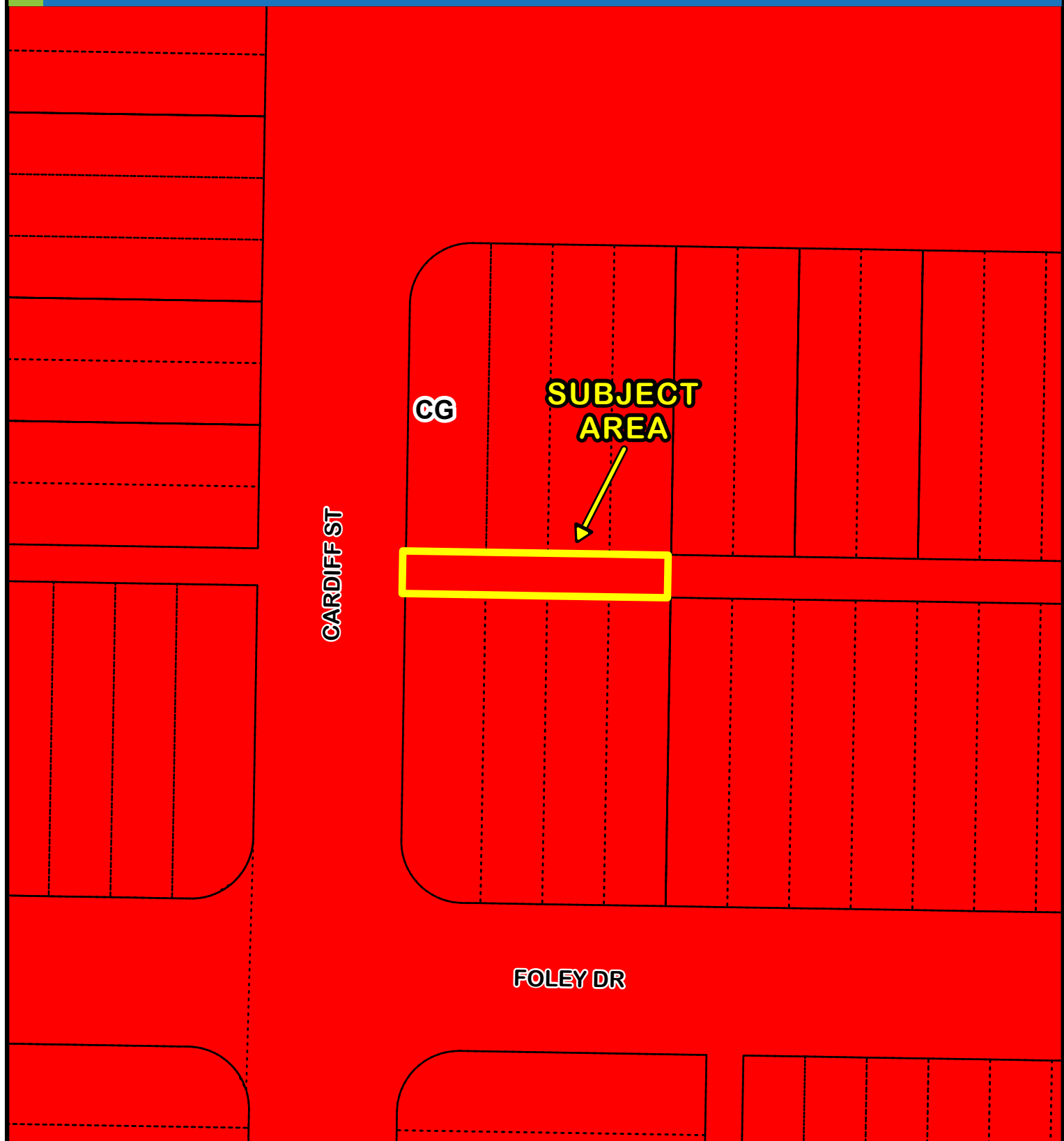


CHARLOTTE COUNTY

Zoning Designations for VST-25-06



CHARLOTTE COUNTY
Community Development



22/40/23 Mid-County



(NOT TO SCALE)

This map is a representation of compiled public information. It is believed to be an accurate and true depiction for the stated purpose, but Charlotte County and its employees make no guarantees, implied or otherwise, to the accuracy, or completeness. We therefore do not accept any responsibilities as to its use. This is not a survey or is it to be used for design. Reflected Dimensions are for informational purposes only and may have been rounded to the nearest tenth. For precise dimensions, please refer to recorded plats and related documents.

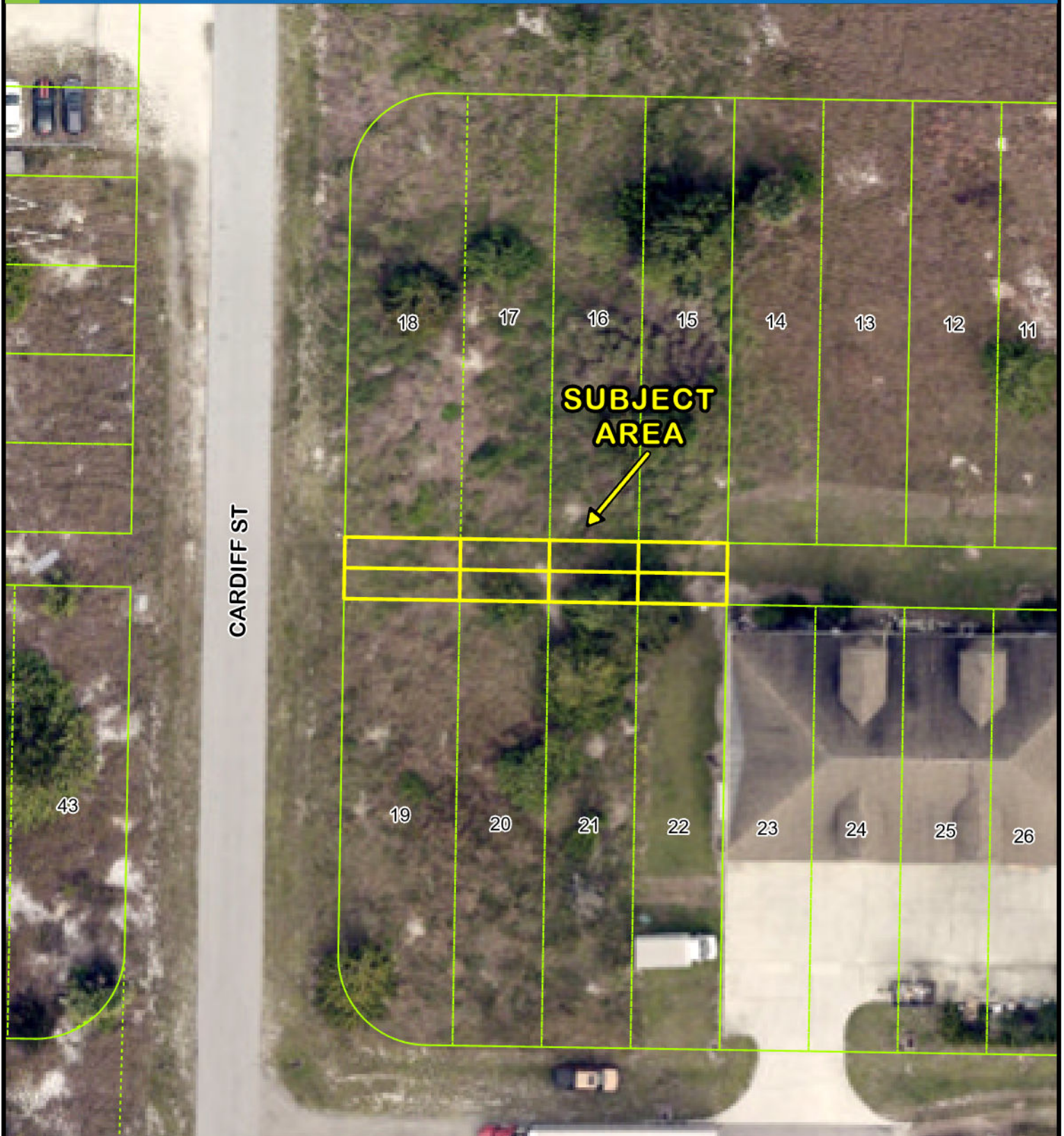
© Copyright 2026 Port Charlotte, FL by Charlotte County

Date Saved: 1/12/2026 3:17 PM By: Finnerty-SR30630

M:\Departments\LIS\Projects\Petition_Maps\Land_Development\2025\SV\VST-25-06\VST_25_06.aprx

CHARLOTTE COUNTY

Proposed Changes for VST-25-06



22/40/23 Mid-County



This map is a representation of compiled public information. It is believed to be an accurate and true depiction for the stated purpose, but Charlotte County and its employees make no guarantees, implied or otherwise, to the accuracy, or completeness. We therefore do not accept any responsibilities as to its use. This is not a survey or is it to be used for design. Reflected Dimensions are for informational purposes only and may have been rounded to the nearest tenth. For precise dimensions, please refer to recorded plats and related documents.

© Copyright 2026 Port Charlotte, FL by Charlotte County
Date Saved: 3/9/2026 11:50 AM By: Finnerty-SR30630

M:\Departments\LIS\Projects\Petition_Maps\Land_Development\2025\SV\VST-25-06\VST_25_06.aprx