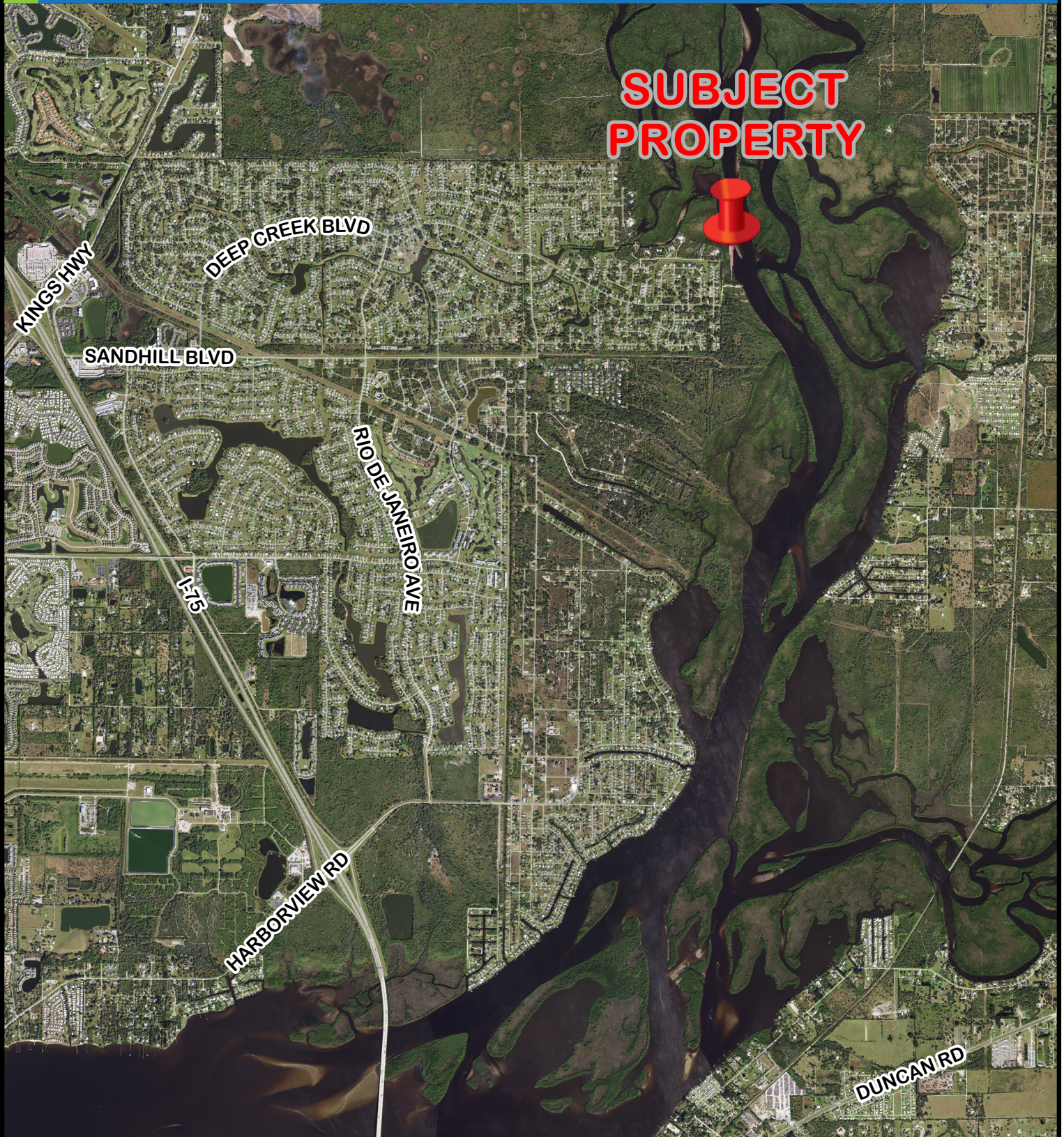


CHARLOTTE COUNTY

Location Map for SV-23-03-01



02/40/23 East County



This map is a representation of compiled public information. It is believed to be an accurate and true depiction for the stated purpose, but Charlotte County and its employees make no guarantees, implied or otherwise, to the accuracy, or completeness. We therefore do not accept any responsibilities as to its use. This is not a survey or is it to be used for design. Reflected Dimensions are for informational purposes only and may have been rounded to the nearest tenth. For precise dimensions, please refer to recorded plats and related documents.

© Copyright 2023 Port Charlotte, FL by Charlotte County
Date Saved: 4/11/2023 11:32 AM By: T.Finnerty - 4464

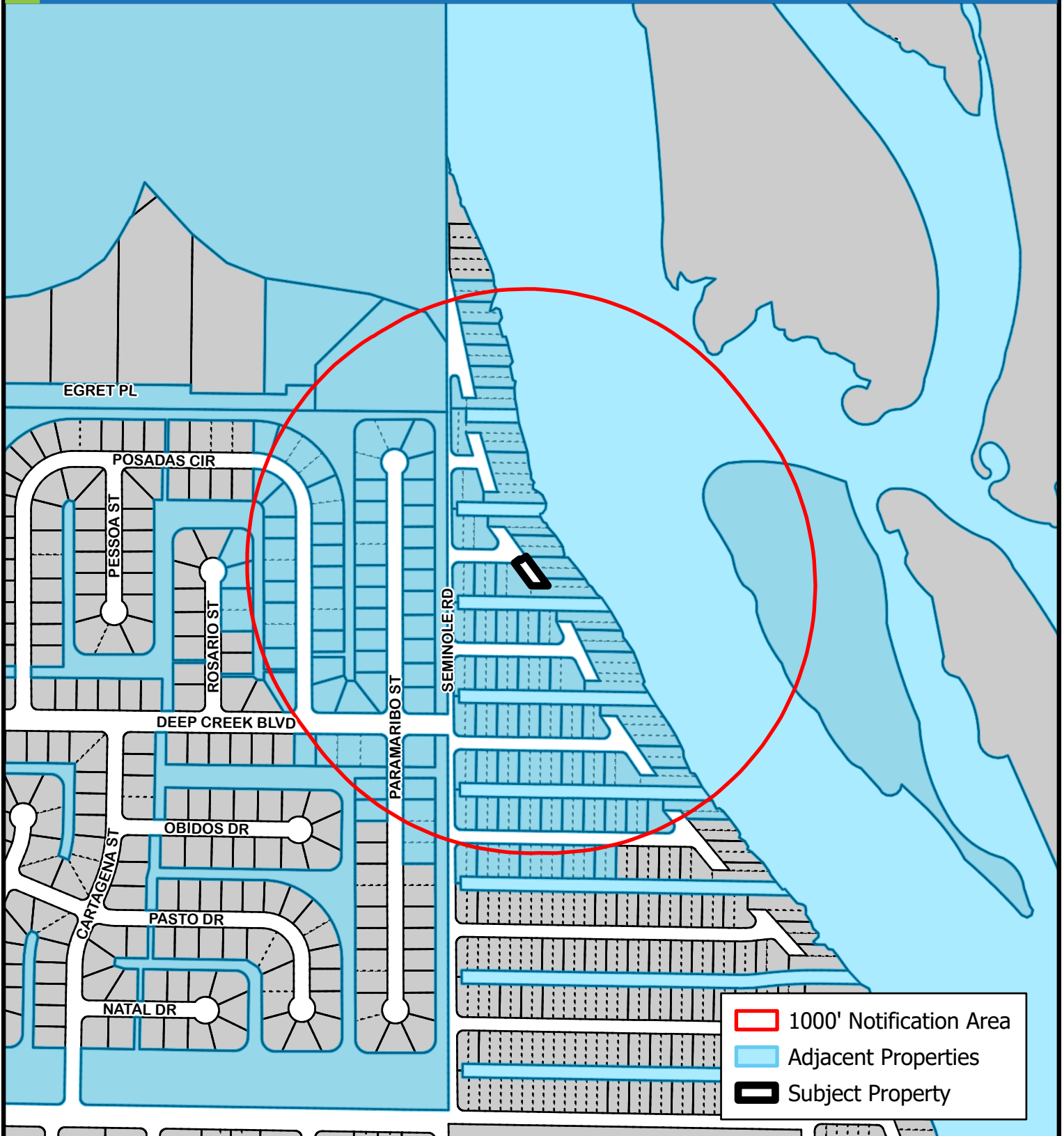
M:\Departments\GIS\Projects\Petition_Maps\Land_Development\2023\Street Vacations\SV-23-03-01\SV_23_03_01.aprx

CHARLOTTE COUNTY

1000' Notification Area Map for SV-23-03-01



CHARLOTTE COUNTY
Community Development



02/40/23 East County



(NOT TO SCALE)

This map is a representation of compiled public information. It is believed to be an accurate and true depiction for the stated purpose, but Charlotte County and its employees make no guarantees, implied or otherwise, to the accuracy, or completeness. We therefore do not accept any responsibilities as to its use. This is not a survey or is it to be used for design. Reflected Dimensions are for informational purposes only and may have been rounded to the nearest tenth. For precise dimensions, please refer to recorded plats and related documents.

© Copyright 2023 Port Charlotte, FL by Charlotte County
Date Saved: 4/11/2023 11:32 AM By: T.Finnerty - 4464

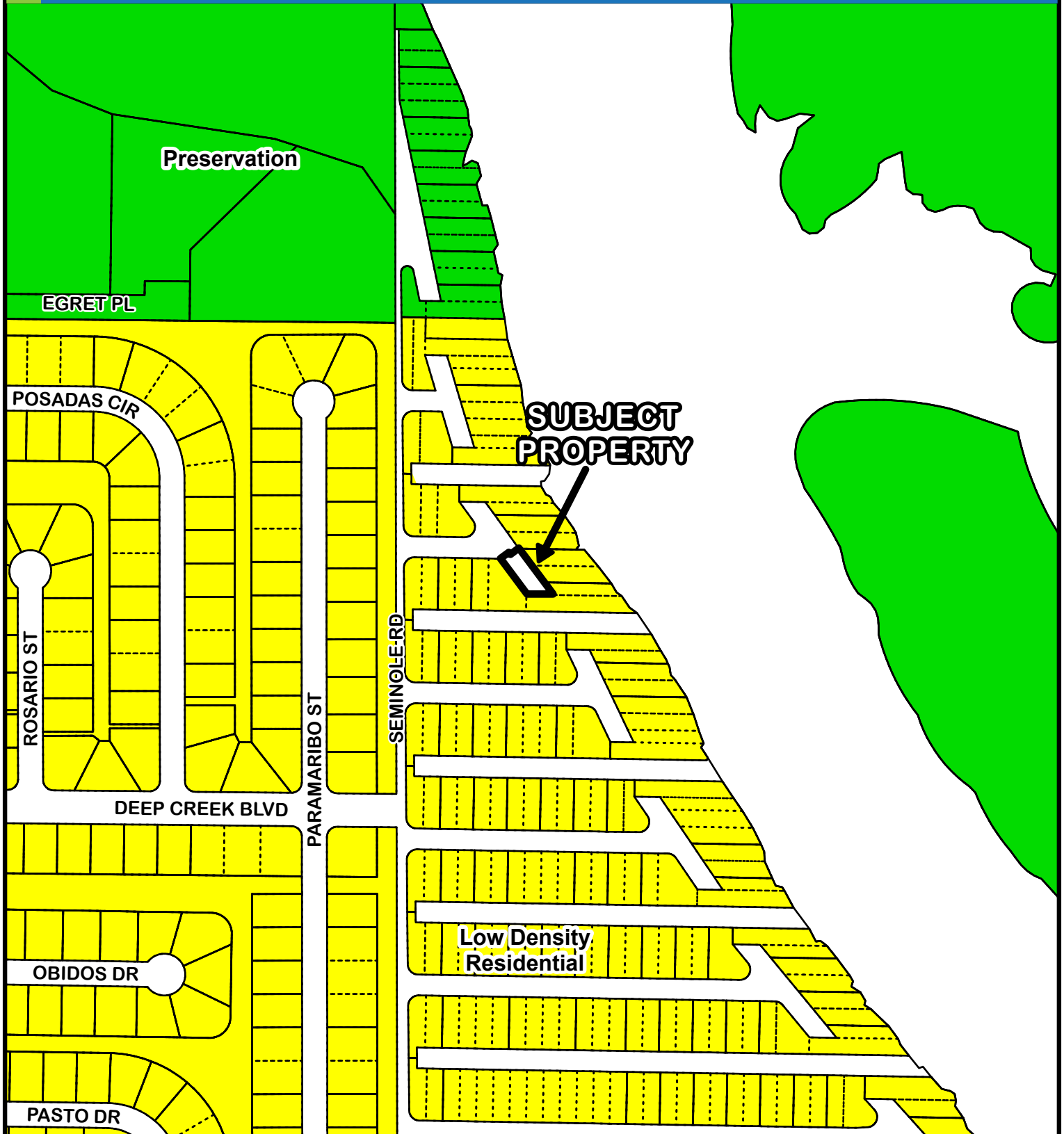
M:\Departments\GIS\Projects\Petition_Maps\Land_Development\2023\Street Vacations\SV-23-03-01\SV_23_03_01.aprx

CHARLOTTE COUNTY

FLUM Designations for SV-23-03-01



CHARLOTTE COUNTY
Community Development



02/40/23 East County



(NOT TO SCALE)

This map is a representation of compiled public information. It is believed to be an accurate and true depiction for the stated purpose, but Charlotte County and its employees make no guarantees, implied or otherwise, to the accuracy, or completeness. We therefore do not accept any responsibilities as to its use. This is not a survey or is it to be used for design. Reflected Dimensions are for informational purposes only and may have been rounded to the nearest tenth. For precise dimensions, please refer to recorded plats and related documents.

© Copyright 2023 Port Charlotte, FL by Charlotte County
Date Saved: 4/11/2023 11:32 AM By: T.Finnerty - 4464

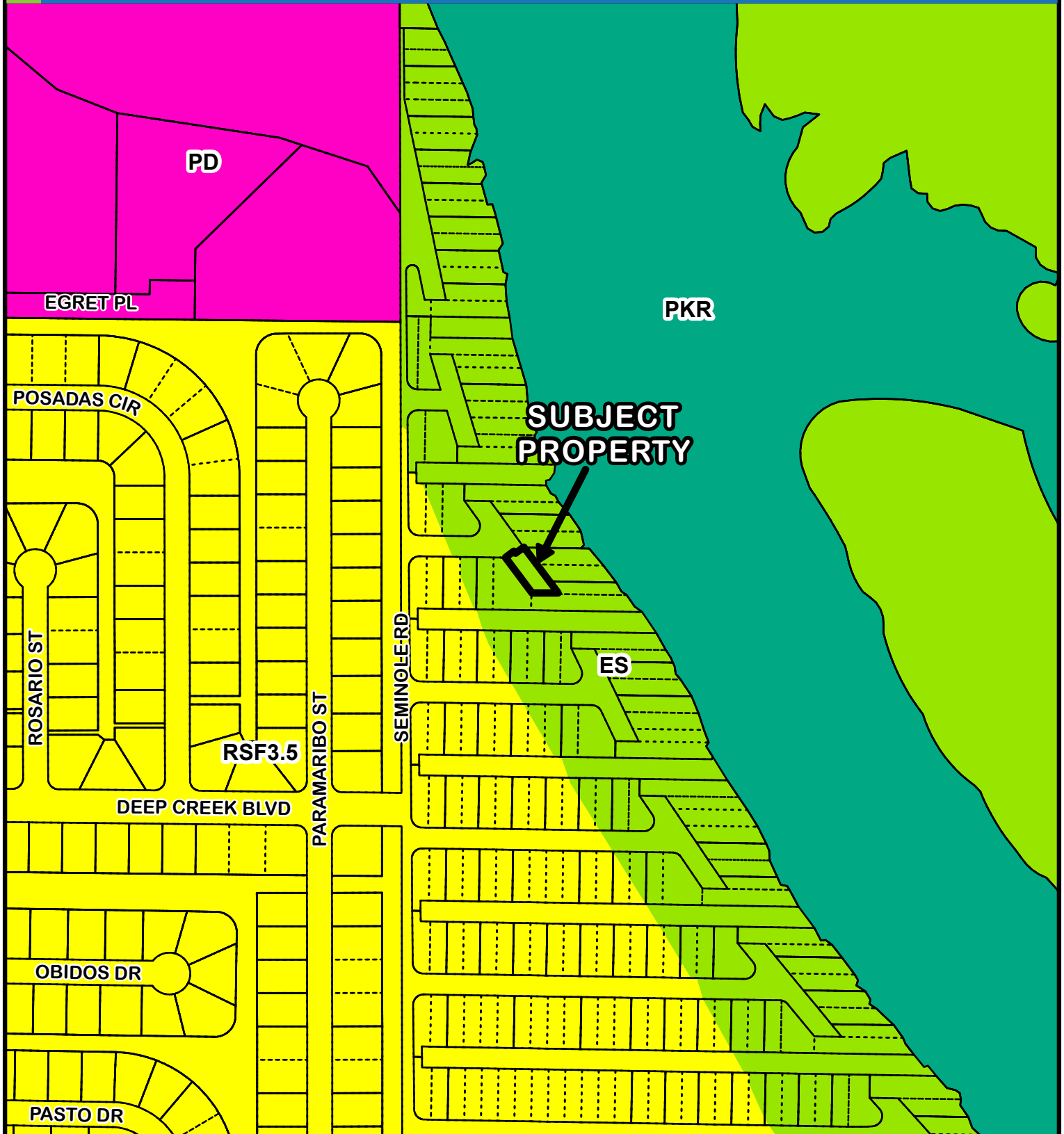
M:\Departments\GIS\Projects\Petition_Maps\Land_Development\2023\Street Vacations\SV-23-03-01\SV_23_03_01.aprx

CHARLOTTE COUNTY

Zoning Designations for SV-23-03-01



CHARLOTTE COUNTY
Community Development



02/40/23 East County



(NOT TO SCALE)

This map is a representation of compiled public information. It is believed to be an accurate and true depiction for the stated purpose, but Charlotte County and its employees make no guarantees, implied or otherwise, to the accuracy or completeness. We therefore do not accept any responsibilities as to its use. This is not a survey or is it to be used for design. Reflected Dimensions are for informational purposes only and may have been rounded to the nearest tenth. For precise dimensions, please refer to recorded plats and related documents.

© Copyright 2023 Port Charlotte, FL by Charlotte County
Date Saved: 4/11/2023 11:32 AM By: T.Finnerty - 4464

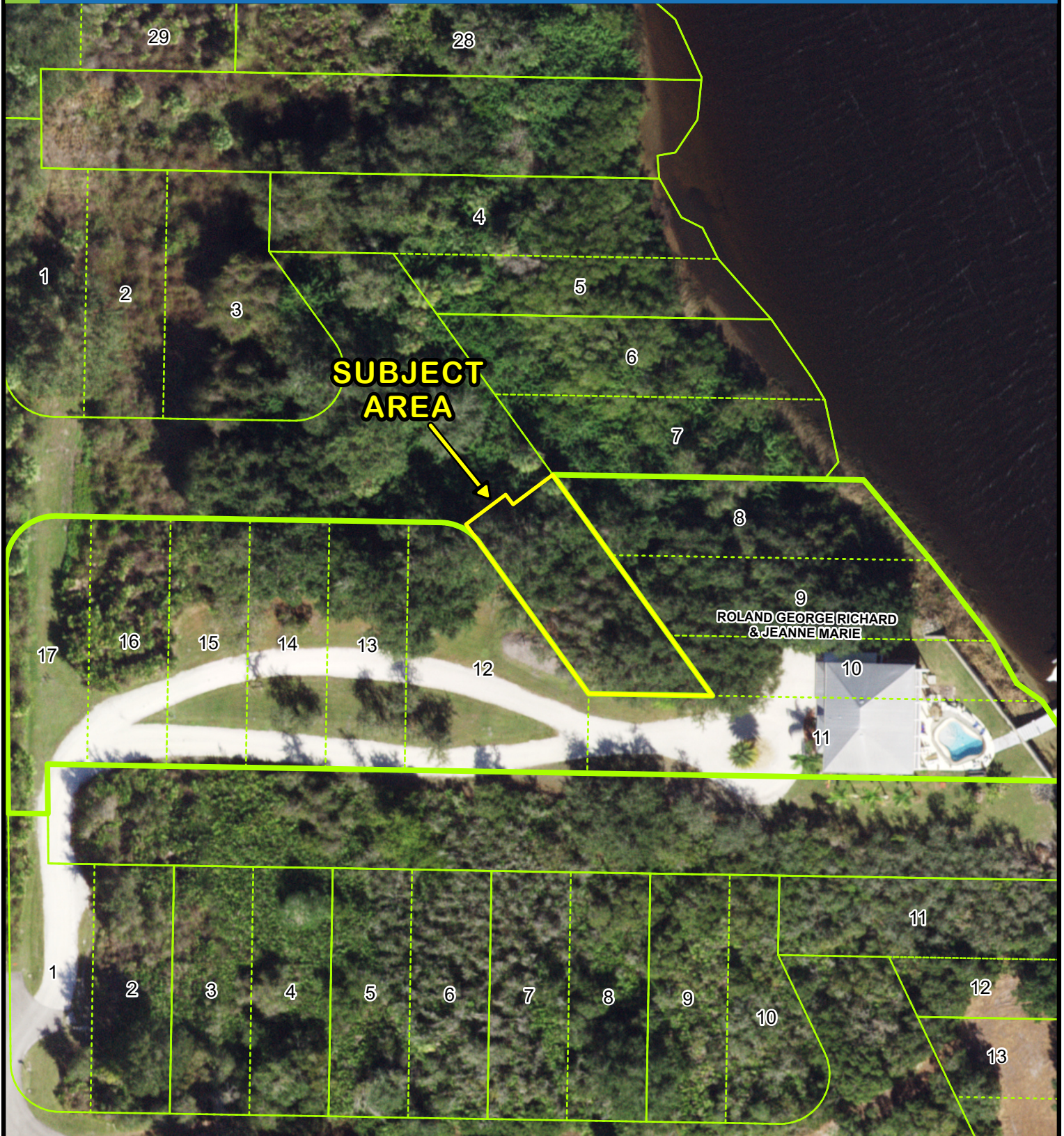
M:\Departments\GIS\Projects\Petition_Maps\Land_Development\2023\Street Vacations\SV-23-03-01\SV_23_03_01.aprx

CHARLOTTE COUNTY

Property Ownership for SV-23-03-01



CHARLOTTE COUNTY
Community Development



02/40/23 East County



(NOT TO SCALE)

This map is a representation of compiled public information. It is believed to be an accurate and true depiction for the stated purpose, but Charlotte County and its employees make no guarantees, implied or otherwise, to the accuracy, or completeness. We therefore do not accept any responsibilities as to its use. This is not a survey or is to be used for design. Reflected Dimensions are for informational purposes only and may have been rounded to the nearest tenth. For precise dimensions, please refer to recorded plats and related documents.

© Copyright 2025 Port Charlotte, FL by Charlotte County
Date Saved: 7/14/2025 10:53 AM By: T.Finnerty - 4464

M:\Departments\GIS\Projects\Petition_Maps\Land_Development\2023\Street Vacations\SV-23-03-01\SV_23_03_01.aprx

CHARLOTTE COUNTY

Proposed Changes for SV-23-03-01



CHARLOTTE COUNTY
Community Development

**SUBJECT
PROPERTY**

02/40/23 East County



(NOT TO SCALE)

This map is a representation of compiled public information. It is believed to be an accurate and true depiction for the stated purpose, but Charlotte County and its employees make no guarantees, implied or otherwise, to the accuracy, or completeness. We therefore do not accept any responsibilities as to its use. This is not a survey or is it to be used for design. Reflected Dimensions are for informational purposes only and may have been rounded to the nearest tenth. For precise dimensions, please refer to recorded plats and related documents.

© Copyright 2023 Port Charlotte, FL by Charlotte County
Date Saved: 5/22/2023 2:27 PM By: T.Finnerty - 4464

M:\Departments\GIS\Projects\Petition_Maps\Land_Development\2023\Street Vacations\SV-23-03-01\SV_23_03_01.aprx