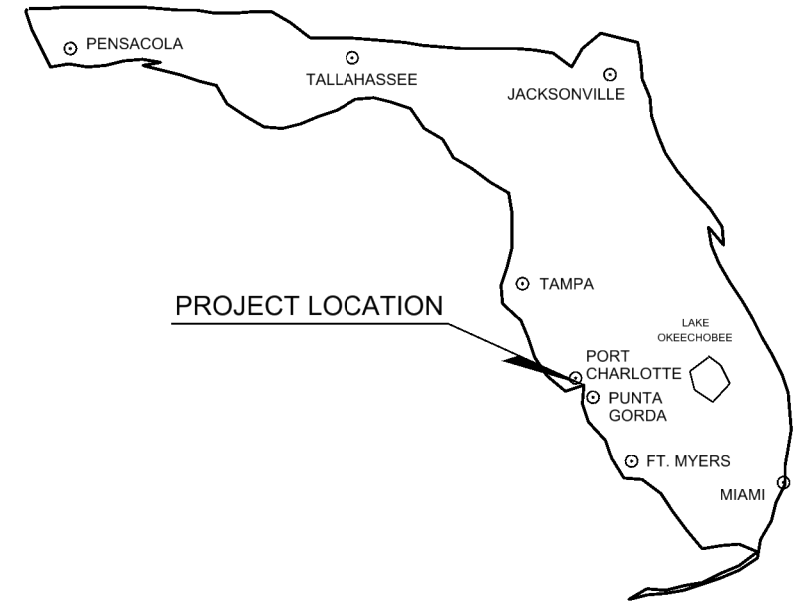


CHARLOTTE COUNTY PUBLIC WORKS ENGINEERING DIVISION

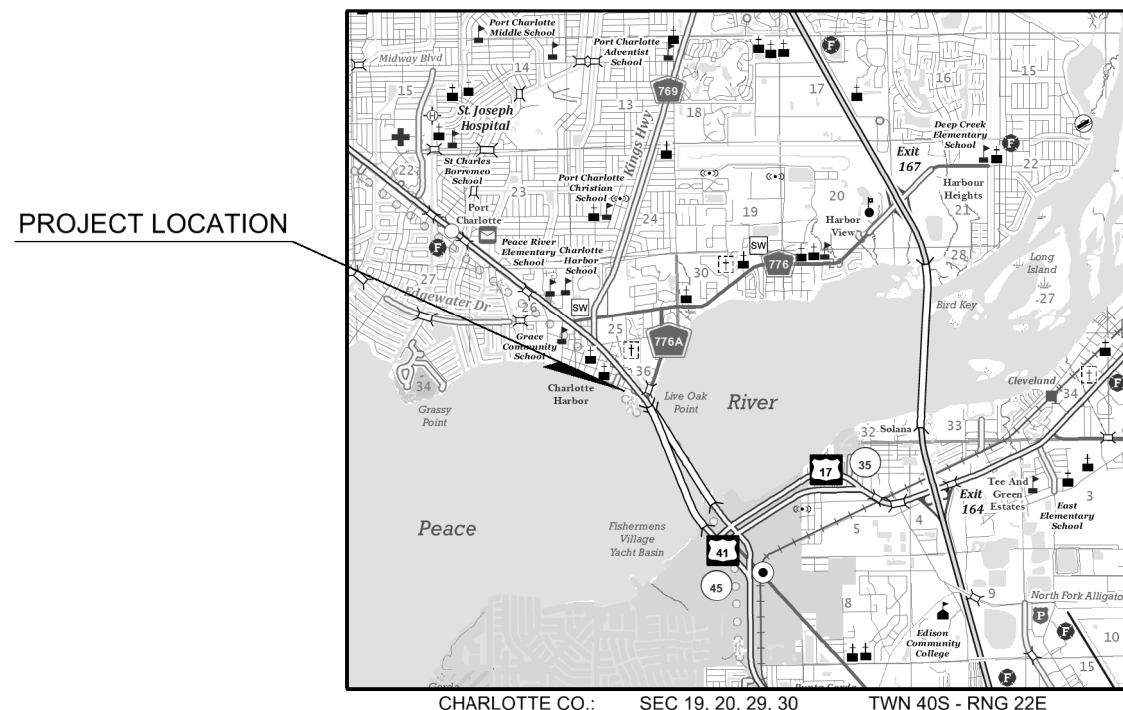
PLANS OF PROPOSED Bayshore Park Hardening

SHEET INDEX

SHEET NO.	SHEET DESCRIPTION
1	KEY SHEET
2	GENERAL NOTES
3	SITE PLAN
4	DETAIL SHEET



STATE OF FLORIDA, DEPARTMENT OF TRANSPORTATION, STANDARD SPECIFICATIONS, DATED FY 2024-25, AND SUPPLEMENTS THERETO AS NOTED IN THE SPECIAL PROVISIONS FOR THIS PROJECT.



CHARLOTTE COUNTY
BOARD OF COUNTY COMMISSIONERS

- DISTRICT 1 - KEN DOHERTY
- DISTRICT 2 - CHRISTOPHER CONSTANCE
- DISTRICT 3 - BILL TRUEX
- DISTRICT 4 - STEPHEN R. DEUTSCH
- DISTRICT 5 - JOE TISEO

FACILITIES MANAGEMENT
18500 MURDOCK CIR, BLDG B
PORT CHARLOTTE, FLORIDA 33948
(941) 623-1002

48 HOURS BEFORE DIGGING
" CALL SUNSHINE "
1-800-432-4770

ATTENTION IS DIRECTED TO THE FACT THAT THESE PLANS MAY HAVE BEEN REDUCED IN SIZE BY REPRODUCTION. THIS MUST BE CONSIDERED WHEN OBTAINING SCALED DATA.

LOCATION MAP



Johnson Engineering, Inc.
2122 Johnson Street
Fort Myers, Florida 33901
Certificate of Authorizaton No. 642

ENGINEERING CERTIFICATION

I HEREBY CERTIFY THAT THE DESIGN OF THIS PROJECT UNDER MY DIRECTION COMPLIES WITH THE CURRENT MANUAL OF UNIFORM MINIMUM STANDARDS FOR DESIGN, CONSTRUCTION, AND MAINTENANCE FOR STREETS AND HIGHWAYS AS ADOPTED BY THE F.D.O.T. PURSUANT TO SUBSECTION 336.045 OF THE FLORIDA STATUTES.

DATE _____ RYAN K. BELL, P.E. NO. 60010

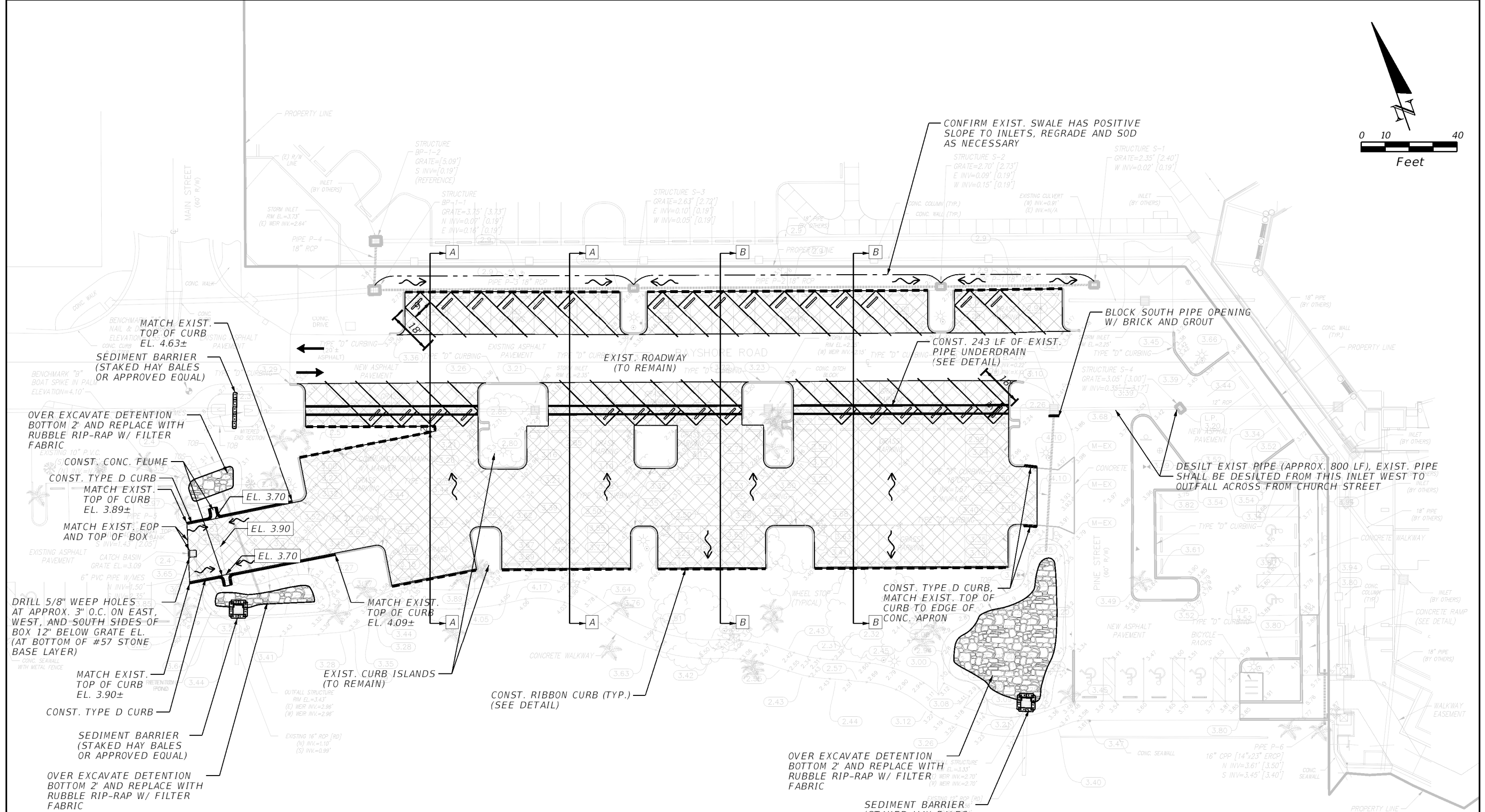
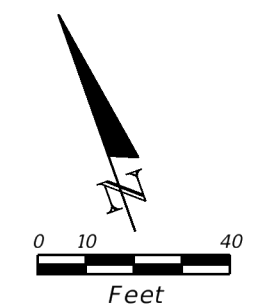
PROJECT NOTES

- 1) OPEN GRID PAVERS SHALL BE TURFSTONE, OR APPROVED EQUAL, FILLED WITH #89 STONE.
- 2) GEOTEXTILE SHALL BE TENCATE MIRAFI FW300, OR APPROVED EQUAL.
- 3) CONCRETE FOR TYPE D CURB AND RIBBON CURB SHALL BE MIN. 2,500 PSI.
- 4) RUBBLE RIP-RAP IN RETENTION AREAS MAY BE SUBSTITUTED WITH #57 STONE OR WASHED SHELL AT COUNTY'S DISCRETION.
- 5) EXCAVATED SURFACE SHALL BE PROOF ROLLED AND STRING-LINED TO ENSURE CONSISTENT SLOPE. CONTRACTOR SHALL CORRECT ANY DEFICIENCIES GREATER THAN 1/2" OVER A 10' STRAIGHTEDGE, PRIOR TO PLACEMENT OF FIRST LAYER OF GEOTEXTILE. CARE SHOULD BE TAKEN TO NOT DISTURB, I.E. RUT, FINISHED SURFACE DURING PLACEMENT OF GEOTEXTILE.
- 6) IN PLACING STONE OVER GEOTEXTILE, MATERIAL SHALL BE PLACED/PUSHED IN FRONT OF THE SPREADING EQUIPMENT SUCH THAT EQUIPMENT DOES NOT RIDE DIRECTLY ON THE GEOTEXTILE. CONTRACTOR SHALL USE SMALL, LOW GROUND PRESSURE EQUIPMENT, E.G. SKID STEER, FOR PLACEMENT AND SPREADING OF MATERIAL.
- 7) AFTER PLACING #89 STONE BASE LAYER CONTRACTOR SHALL AGAIN STRING-LINE AND STRAIGHT EDGE THE TOP OF STONE SURFACE BEFORE PLACING PAVERS. CORRECT ANY DEFICIENCIES THAT WOULD RESULT IN AN UNEVEN PAVER SURFACE.
- 8) CHECK FINISHED GRADE OF PAVERS WITH STRING-LINE AND STRAIGHT EDGE. CORRECT ANY DEFICIENCIES GREATER THAN 1/4" OVER A 10' STRAIGHT EDGE.
- 9) REMOVE AND REPLACE ANY CRACKED OR BROKEN PAVERS PRIOR TO FINAL ACCEPTANCE.
- 10) ALL DRAINAGE PIPES AND STRUCTURES SHALL BE INSPECTED AND FREE OF SILT/DEBRIS PRIOR TO FINAL ACCEPTANCE. COST FOR THIS WORK IS CONSIDERED INHERENT TO OTHER PAY ITEMS.
- 11) CONTRACTOR SHALL MAINTAIN ACCESS TO THE EXISTING PAVED PARKING LOT AT ALL TIMES. MOT SHALL BE IN ACCORDANCE WITH THE APPROPRIATE FDOT STANDARD PLANS. THE MOT PAY ITEMS SHALL INCLUDE ALL EFFORT NECESSARY TO ESTABLISH, MAINTAIN, AND TAKE DOWN NECESSARY MOT DEVICES.

PAY ITEM NOTES

- 1) ALL SODDING AND RESTORATION OF THE SITE SHALL BE CONSIDERED INCIDENTAL TO OTHER PAY ITEMS IN THE CONTRACT.
- 2) CONTRACTOR SHALL PROVIDE A MINIMUM ONE YEAR WARRANTY ON PAVERS.
- 3) CONTRACTOR TO PROVIDE AN ADDITIONAL 200 SF OF PAVERS FOR FUTURE USE. COST SHALL BE INHERENT TO OVERALL PAVER COST.

REVISIONS				CHARLOTTE COUNTY			BAYSHORE PARK HARDENING GENERAL NOTES	SHEET NO.
DATE	DESCRIPTION	DATE	DESCRIPTION	ROAD NO.	COUNTY	FINANCIAL PROJECT ID		
								2

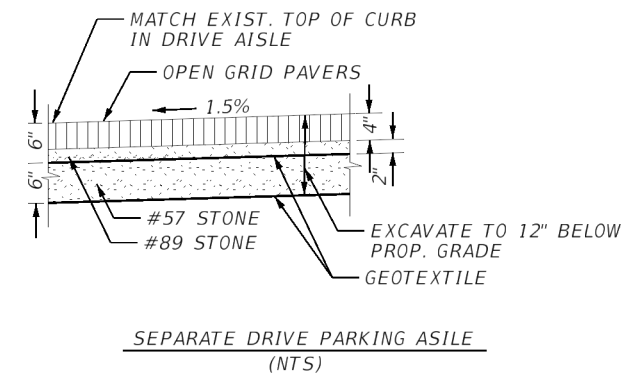
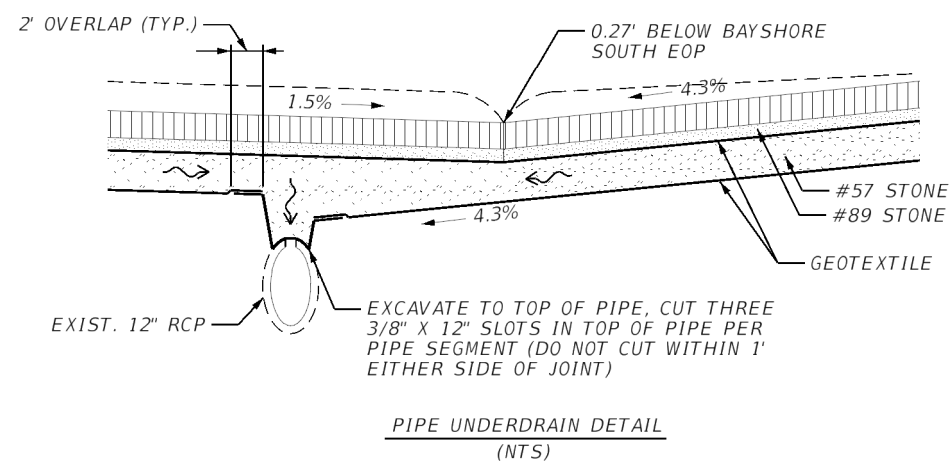
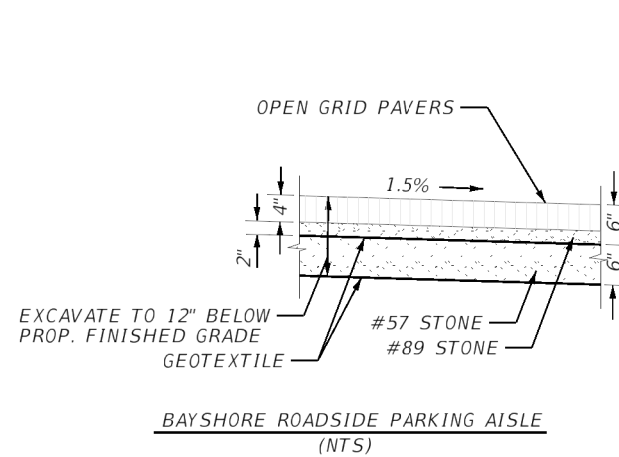
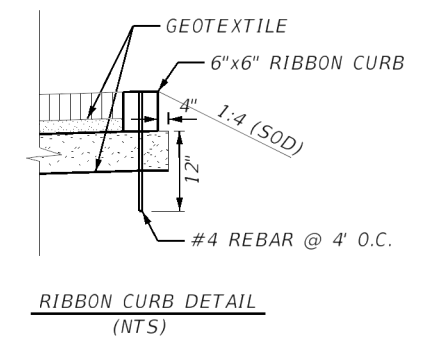
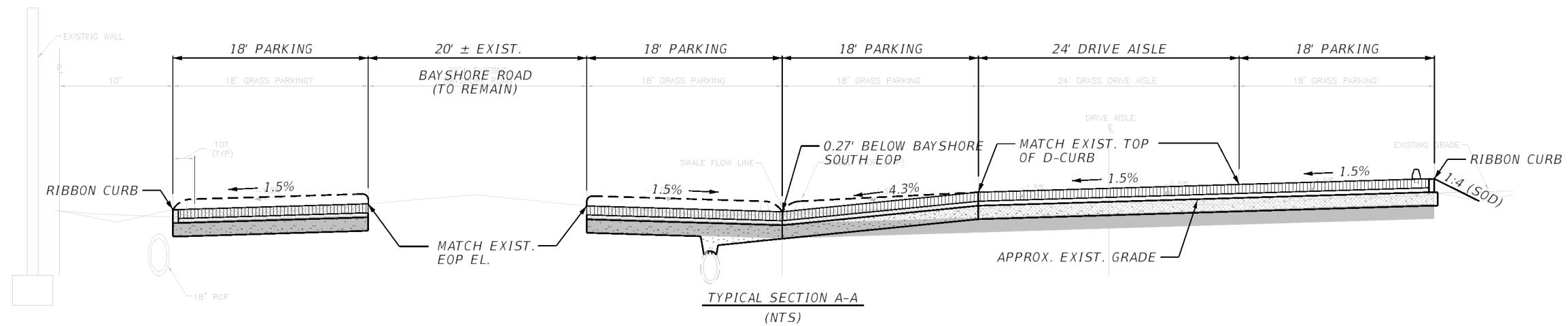
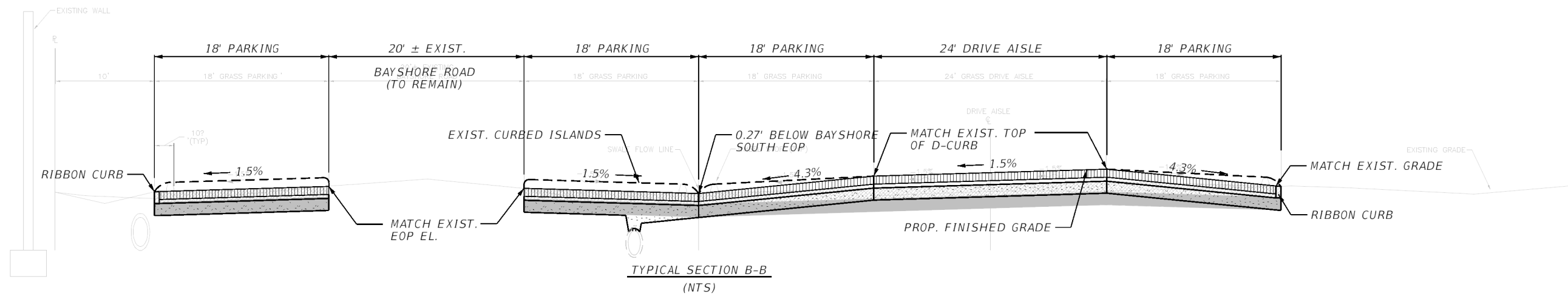


THE INTENT OF THIS PROJECT IS ONLY TO HARDEN THE EXISTING PARKING SURFACE. DRAINAGE IMPROVEMENTS OTHER THAN THESE MINOR GRADING DETAILS SHOWN HERIN ARE CONSIDERED OUTSIDE THE SCOPE OF THIS PROJECT.

LEGEND

	OPEN GRID PAVERS (AREA = 2,876 SY / 0.594 AC)
	2" (THICK) RIP RAP (AREA = 206 SY)

REVISIONS				CHARLOTTE COUNTY			BAYSHORE PARK HARDENING SITE PLAN	SHEET NO. 3
DATE	DESCRIPTION	DATE	DESCRIPTION	ROAD NO.	COUNTY	FINANCIAL PROJECT ID		



REVISIONS				CHARLOTTE COUNTY			BAYSHORE PARK HARDENING DETAIL SHEET	SHEET NO. 4
DATE	DESCRIPTION	DATE	DESCRIPTION	ROAD NO.	COUNTY	FINANCIAL PROJECT ID		

Michele.newbury 1/5/2026 1:14:51 PM Sheet Projects\20247046-000\roadway\DetailSheet.dgn