

FILED
1977 NOV -8 PM 2:48
BROOKS C. ALEXANDER
CLERK OF CIRCUIT COURT
CHARLOTTE COUNTY FLORIDA

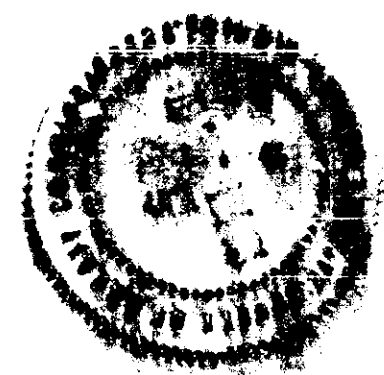
HORSESHOE ACRES

A SUBDIVISION LYING IN SECTIONS 25 & 26, TOWNSHIP 42 SOUTH, RANGE 25 EAST, CHARLOTTE COUNTY, FLORIDA.

HOWELL F. DAVIS & ASSOCIATES INC.
CONSULTING ENGINEERS & SURVEYORS
FORT MYERS, FLORIDA.

OCTOBER 1976

SCALE 1"=200'



LEGAL DESCRIPTION:

SITUATED IN THE STATE OF FLORIDA, COUNTY OF CHARLOTTE, BEING A PART OF SECTIONS 25 AND 26, TOWNSHIP 42 SOUTH, RANGE 25 EAST AND FURTHER BOUNDED AND DESCRIBED AS FOLLOWS:
STARTING AT THE SOUTHWEST CORNER OF THE AFORESAID SECTION 25, SAID POINT ALSO BEING THE PRINCIPAL PLACE OF BEGINNING; THENCE N 89°40'16" E ALONG THE SOUTH LINE OF SAID SECTION 25 A DISTANCE OF 5303.32 FEET TO A POINT ON THE WESTERLY RIGHT-OF-WAY LINE OF STATE ROAD 31; THENCE N 0°00'02" W ALONG SAID RIGHT-OF-WAY LINE A DISTANCE OF 1320.18 FEET TO A POINT ON THE NORTHERLY LINE OF THE SOUTH 1/2 OF THE SOUTH 1/2 OF SAID SECTION 25; THENCE S 89°50'20" W ALONG SAID FRACTIONAL LINE A DISTANCE OF 5314.75 FEET TO A POINT ON THE NORTHERLY LINE OF THE SOUTH 1/2 OF THE SOUTH 1/2 OF THE AFORESAID SECTION 26; THENCE S 89°32'12" W ALONG SAID FRACTIONAL LINE A DISTANCE OF 5320.48 FEET TO A POINT ON THE WESTERLY LINE OF THE AFORESAID SECTION 26; THENCE S 0°23'58" E ALONG SAID WESTERLY LINE A DISTANCE OF 1330.57 FEET TO THE SOUTHWEST CORNER OF SAID SECTION 26; THENCE N 89°35'32" E ALONG THE SOUTH LINE OF SAID SECTION 26 A DISTANCE OF 5322.66 FEET TO THE PLACE OF BEGINNING.

CERTIFICATE:

I HEREBY CERTIFY: THAT THE ATTACHED PLAT OF HORSESHOE ACRES, HAS BEEN EXAMINED BY ME AND FROM MY EXAMINATION I FIND THAT SAID PLAT COMPLIES IN FORM WITH THE REQUIREMENTS OF CHAPTER 177, LAWS OF FLORIDA. I FURTHER CERTIFY: THAT THIS PLAT WAS FILED FOR RECORD AT _____ M. THIS _____ DAY OF _____ A.D. 1976, AND DULY RECORDED IN PLAT BOOK _____ AT PAGE _____, PUBLIC RECORDS OF CHARLOTTE COUNTY, FLORIDA.

CLERK OF THE CIRCUIT COURT IN
AND FOR CHARLOTTE COUNTY, FLORIDA.

EASEMENT DEDICATION:

THE OWNERS OF THIS PLAT DO HEREBY DEDICATE EASEMENTS ALONG EACH BOUNDARY OF EACH LOT FOR COUNTY DRAINAGE PURPOSES AND PUBLIC UTILITIES; SAID EASEMENTS TO BE 60 FEET EACH SIDE OF SAID BOUNDARY UNLESS OTHERWISE SHOWN.

SURVEYOR'S NOTES:

BEARINGS ARE BASED ON THE SOUTH LINE OF SECTION 25 AS BEARING N 89°40'16" E.
(R) DENOTES RADIAL LINE
+ DENOTES P.R.M. (PERMANENT REFERENCE MONUMENT), SET UNLESS INDICATED OTHERWISE.
- DENOTES P.C.P. (PERMANENT CONTROL POINT).
P.U.E. DENOTES PUBLIC UTILITY EASEMENT.

SURVEYOR'S CERTIFICATE:

I HEREBY CERTIFY: THAT THE ATTACHED PLAT OF HORSESHOE ACRES IS A TRUE AND CORRECT REPRESENTATION OF THE HEREON DESCRIBED LAND ACCORDING TO A RECENT SURVEY MADE AND PLATTED UNDER MY DIRECTION AND SUPERVISION AND THAT PERMANENT REFERENCE MONUMENTS HAVE BEEN PLACED AS REQUIRED BY THE CHARLOTTE COUNTY SUBDIVISION REGULATIONS AND COMPLIES WITH ALL OF THE REQUIREMENTS OF CHAPTER 177, FLORIDA STATUTES.



HOWELL F. DAVIS
REGISTERED LAND SURVEYOR
CERTIFICATION No. 1884

STATE OF FLORIDA) 55 COUNTY COMMISSION APPROVAL
COUNTY OF CHARLOTTE)

IT IS HEREBY CERTIFIED THAT THIS PLAT HAS BEEN OFFICIALLY APPROVED FOR RECORDING BY THE COUNTY COMMISSION OF CHARLOTTE COUNTY, FLORIDA THIS 8 DAY OF November, 1976.

Paul B. Byer
CHAIRMAN CHARLOTTE COUNTY COMMISSIONERS

STATE OF FLORIDA) 55 HEALTH DEPARTMENT APPROVAL
COUNTY OF CHARLOTTE)

I HEREBY CERTIFY THAT THE REQUIREMENTS OF THE CHARLOTTE COUNTY HEALTH DEPARTMENT HAVE BEEN COMPLIED WITH IN THE PREPARATION OF THIS PLAT.

DATE: 11-24-76 *Robert Corino*

STATE OF FLORIDA) 55 COUNTY ATTORNEY APPROVAL
COUNTY OF CHARLOTTE)

I HEREBY CERTIFY THAT I HAVE EXAMINED AND APPROVED THIS PLAT THIS 4 DAY OF February, 1976.

William H. ...
COUNTY ATTORNEY

STATE OF FLORIDA) 55 PLANNING & ZONING APPROVAL
COUNTY OF CHARLOTTE)

THIS IS TO CERTIFY THAT THIS PLAT MEETS THE REQUIREMENTS OF THE CHARLOTTE COUNTY SUBDIVISION REGULATIONS AND CONFORMS TO THE CHARLOTTE COUNTY COMPREHENSIVE PLAN.

DATE: 11/29/76 *John W. Douglas*
CHAIRMAN, PLANNING & ZONING BOARD

STATE OF FLORIDA) 55 COUNTY CLERK APPROVAL
COUNTY OF CHARLOTTE)

THE UNDERSIGNED HEREBY CERTIFIES THAT THIS PLAT HAS BEEN EXAMINED AND THAT IT COMPLIES IN FORM WITH ALL THE REQUIREMENTS OF THE STATUTES OF FLORIDA PERTAINING TO MAPS AND PLATS, AND THIS PLAT HAS BEEN FILED FOR RECORD IN PLAT BOOK _____, PAGES _____, OF THE PUBLIC RECORDS OF CHARLOTTE COUNTY, FLORIDA, THIS _____ DAY OF _____, 1976 AT _____ M.

CLERK, CHARLOTTE COUNTY

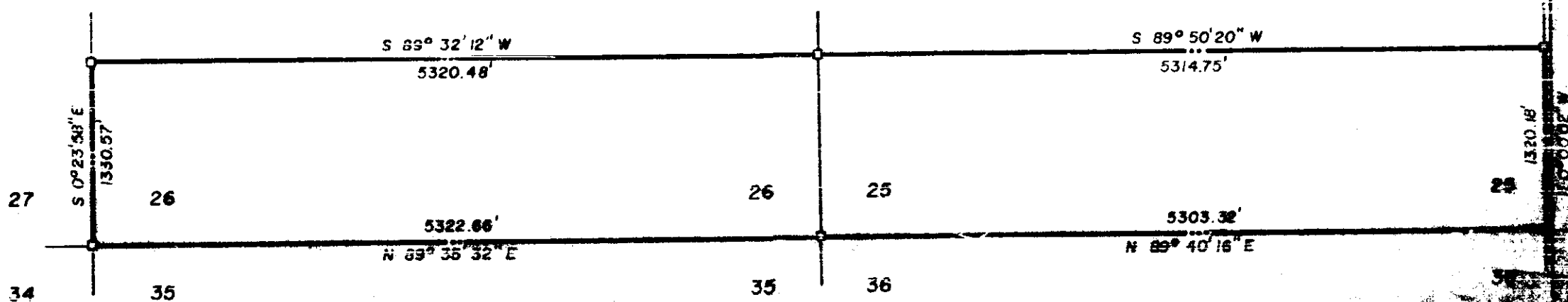
STATE OF FLORIDA) 55 COUNTY ENGINEER APPROVAL
COUNTY OF CHARLOTTE)

I, THE UNDERSIGNED COUNTY ENGINEER FOR CHARLOTTE COUNTY, FLORIDA, CERTIFY THAT I HAVE REVIEWED THIS PLAT AND IN MY OPINION IT CONFORMS WITH THE CURRENT CHARLOTTE COUNTY SUBDIVISION REGULATIONS.

DATE: October 28, 1977

Donald R. ...
COUNTY ENGINEER

LOCATION MAP
SCALE 1"=1000'



391762

SR. 31