

Z-26-14 (Quasi-Judicial)

(First Public Hearing BCC Land Use Meeting 05-26-2026

Second Public Hearing BCC Land Use Meeting 06-09-2026)

Charlotte County

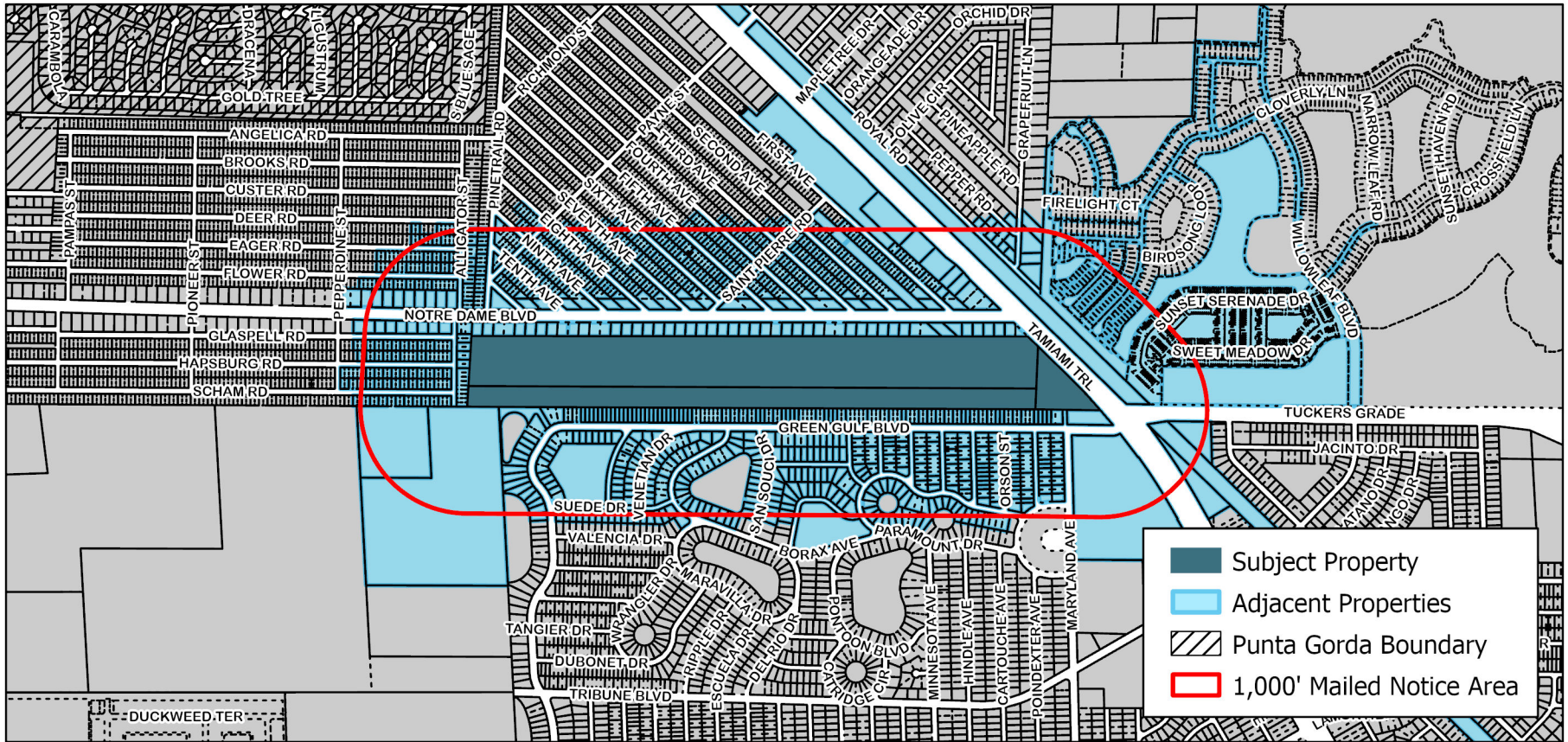
Board of County Commissioners



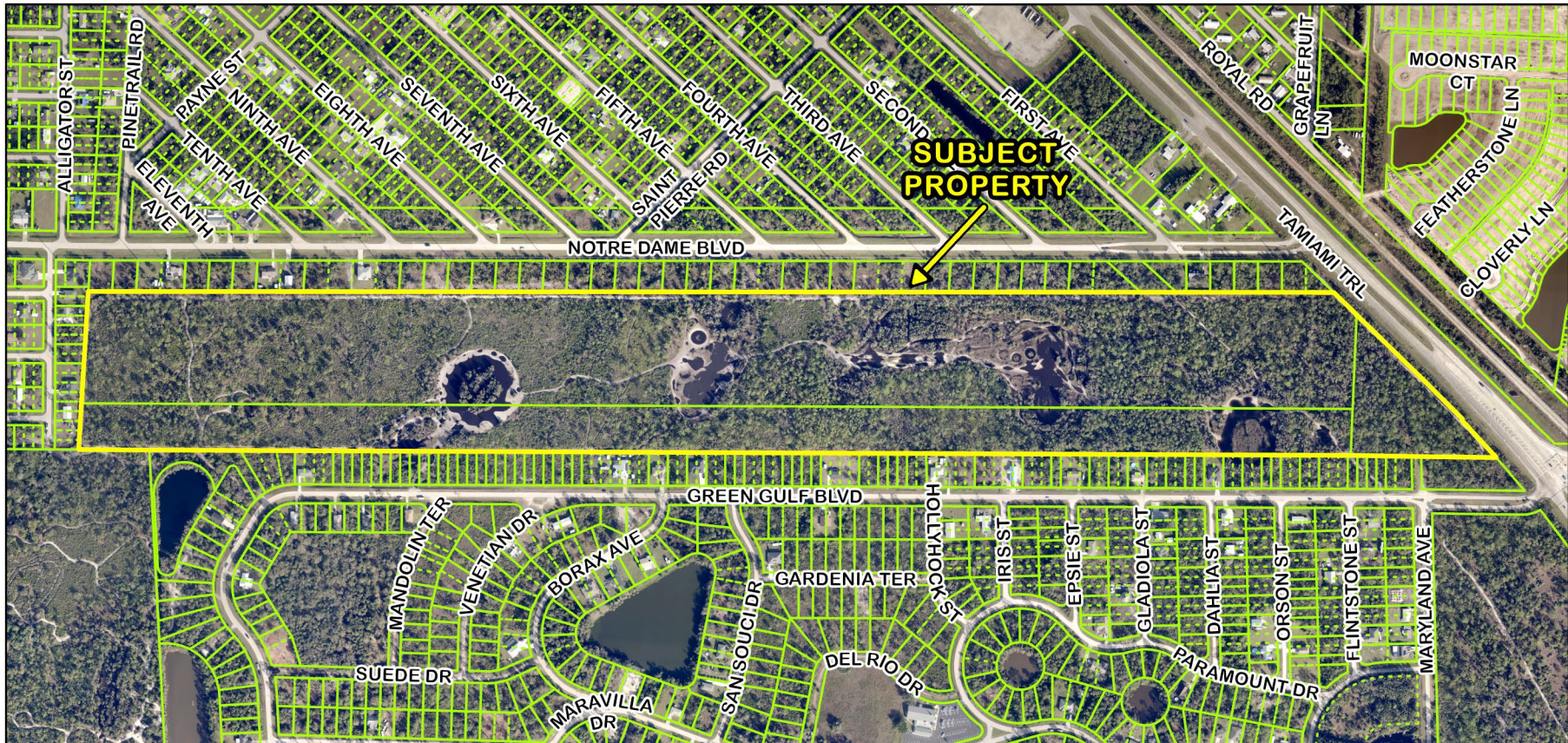
CHARLOTTE COUNTY
FLORIDA

Proposed Change

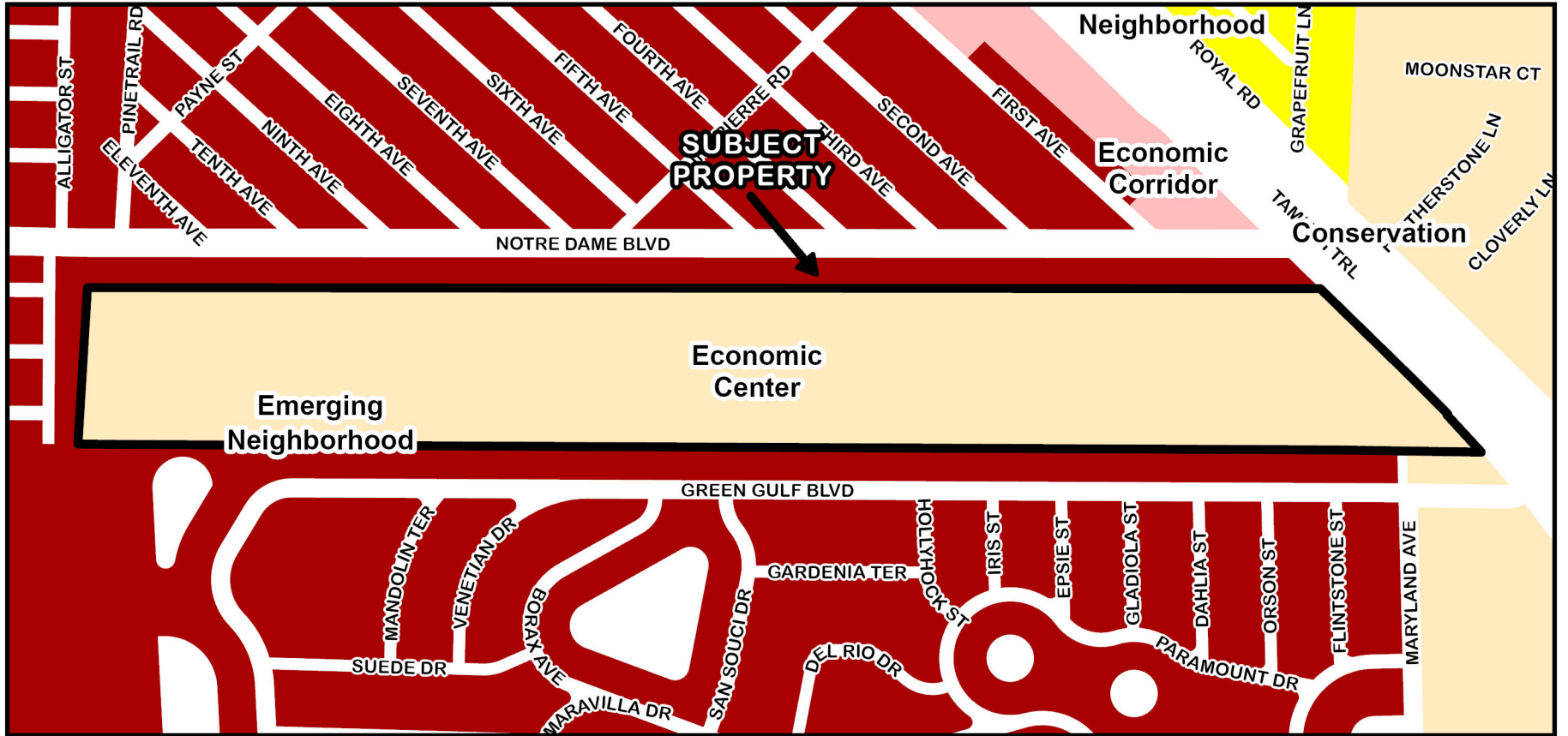
- A rezoning from Atlas from Residential Estate 1 (RE-1) (81.884± acres) to Commercial General (CG) (62.824± acres) and Environmentally Sensitive (ES) (19.06± acres)
- The subject property is located in Commission District II.



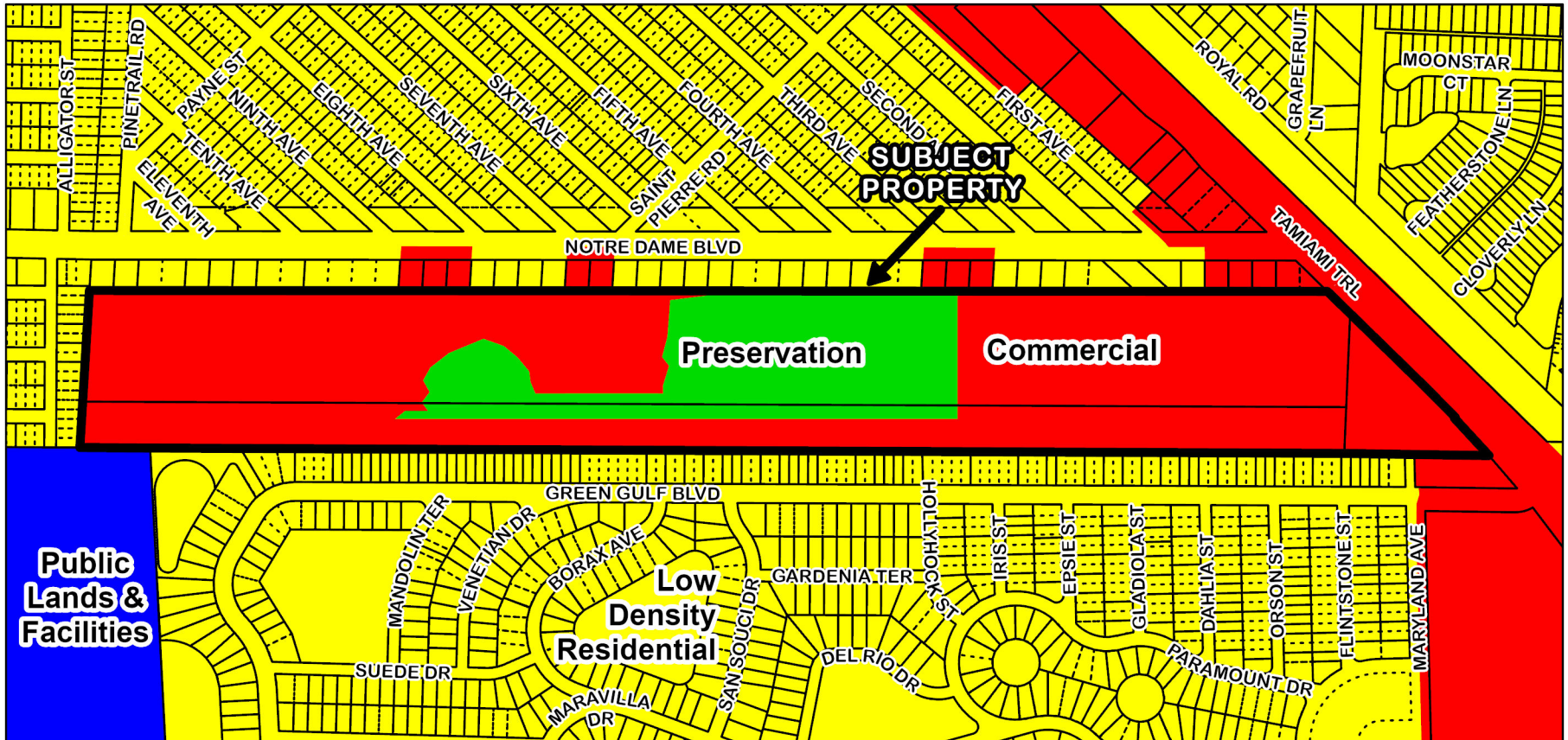
Z-26-14 1,000' Mailed Notice Area Map



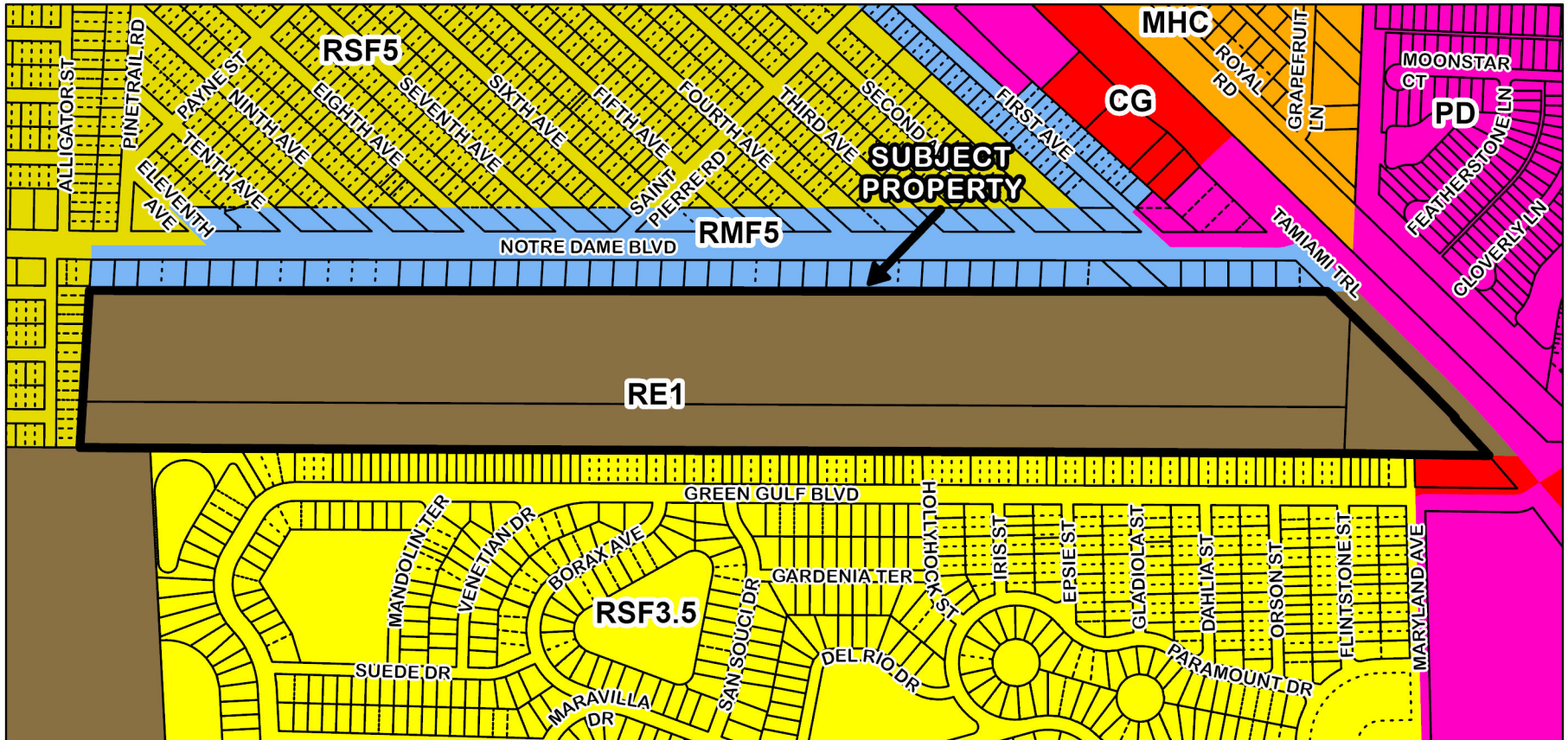
Z-26-14 Area Image



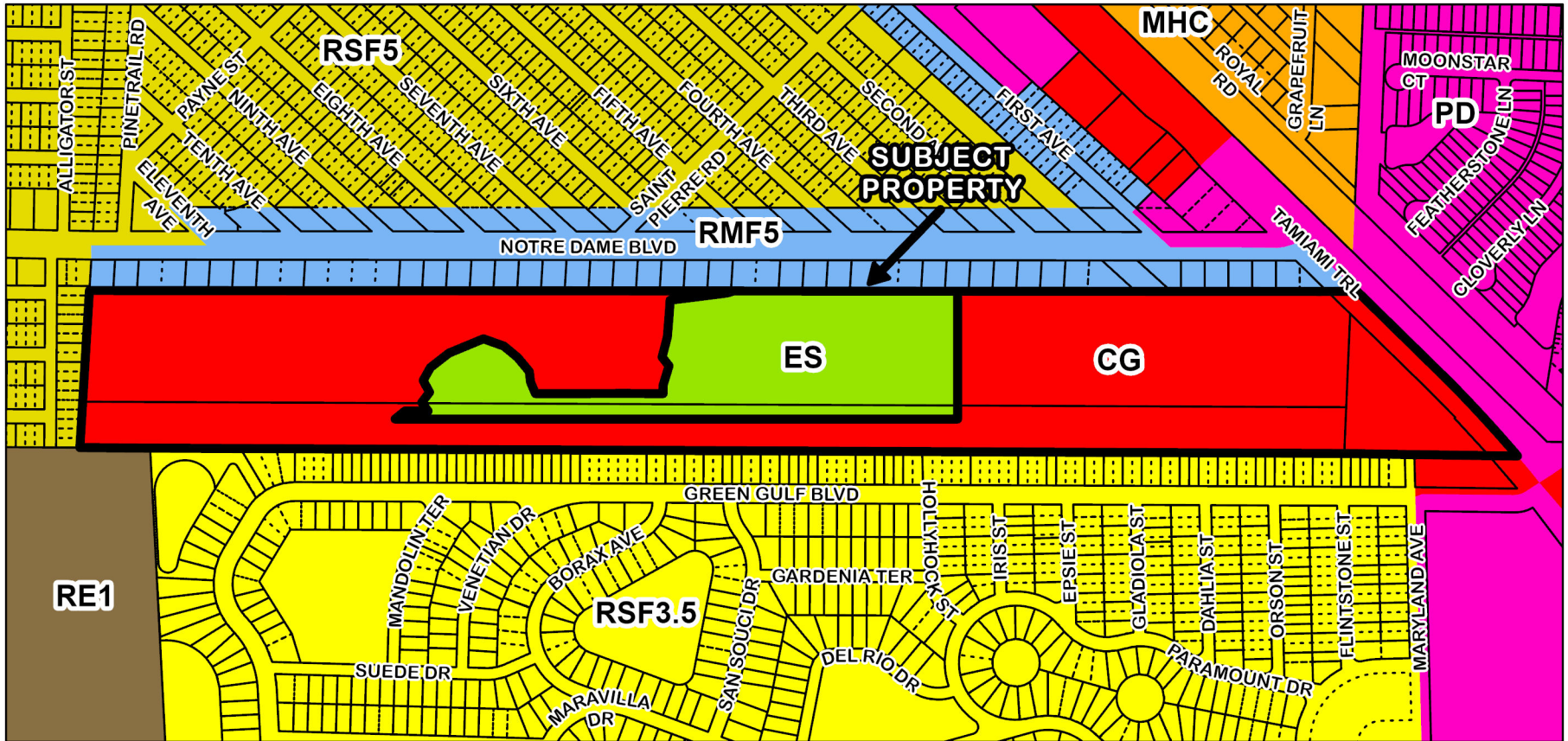
Z-26-14 Framework



Z-26-14 FLUM Designations



Z-26-14 Zoning Designations



Z-26-14 Proposed Zoning Designations