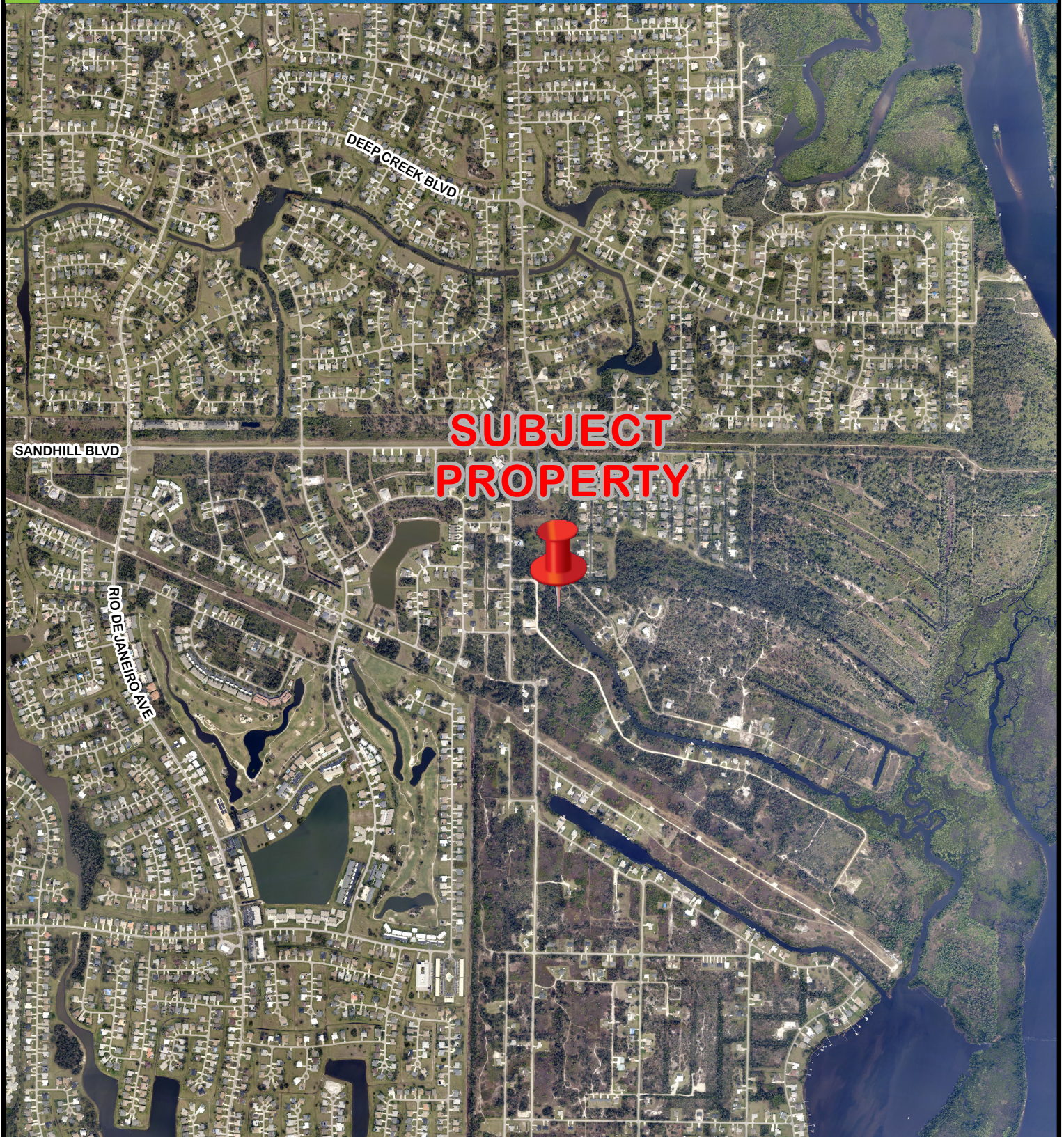


CHARLOTTE COUNTY

Location Map for SV-25-02



10/40/23 Mid-County



This map is a representation of compiled public information. It is believed to be an accurate and true depiction for the stated purpose, but Charlotte County and its employees make no guarantees, implied or otherwise, to the accuracy, or completeness. We therefore do not accept any responsibilities as to its use. This is not a survey or is it to be used for design. Reflected Dimensions are for informational purposes only and may have been rounded to the nearest tenth. For precise dimensions, please refer to recorded plats and related documents.

© Copyright 2025 Port Charlotte, FL by Charlotte County
Date Saved: 2/5/2025 9:42 AM By: Finnerty-SR18934

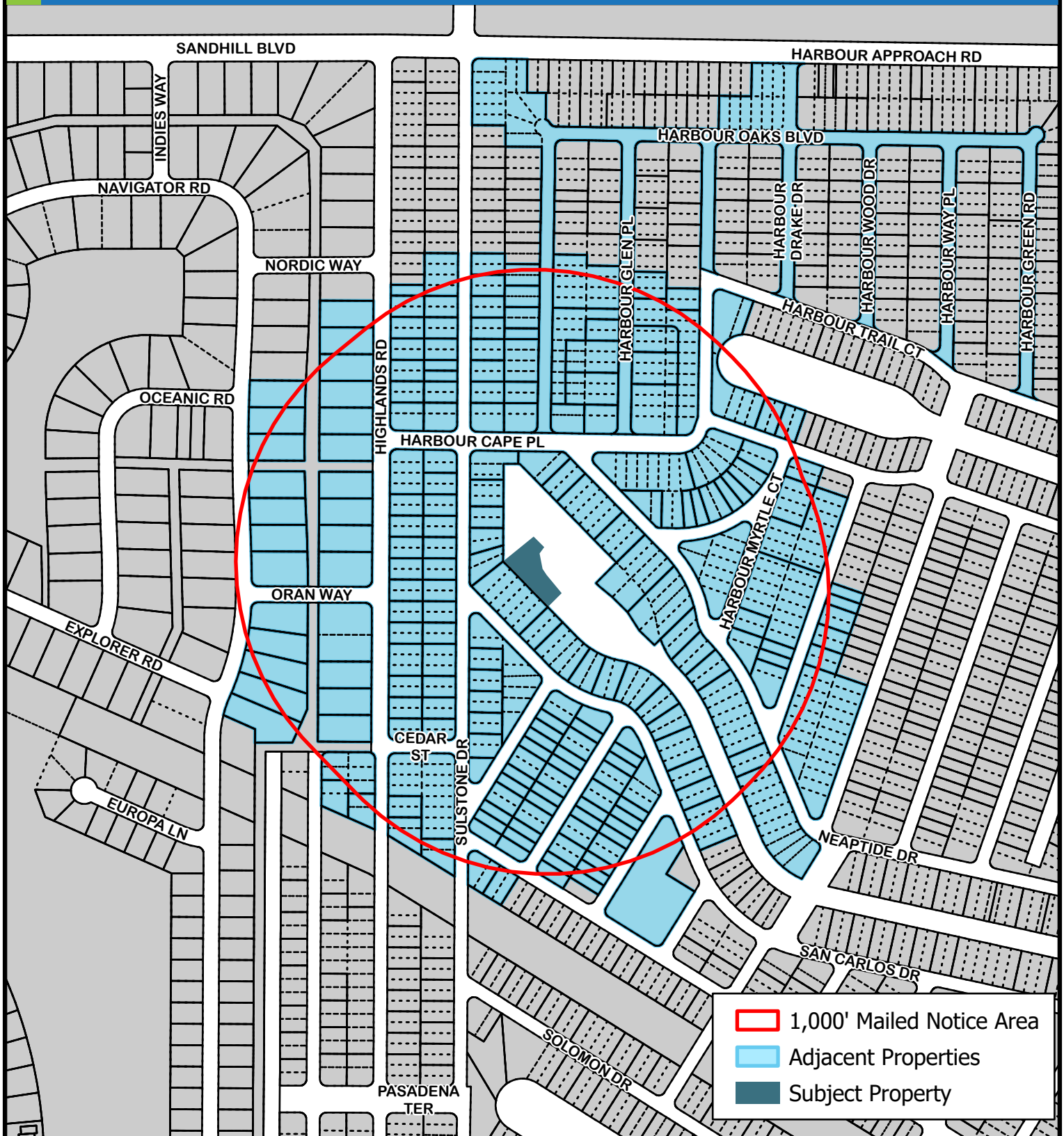
M:\Departments\LIS\Projects\Petition_Maps\Land_Development\2025\SV\SV-25-02\SV_25_02.aprx

CHARLOTTE COUNTY

1000' Mailed Notice Area for SV-25-02



CHARLOTTE COUNTY
Community Development



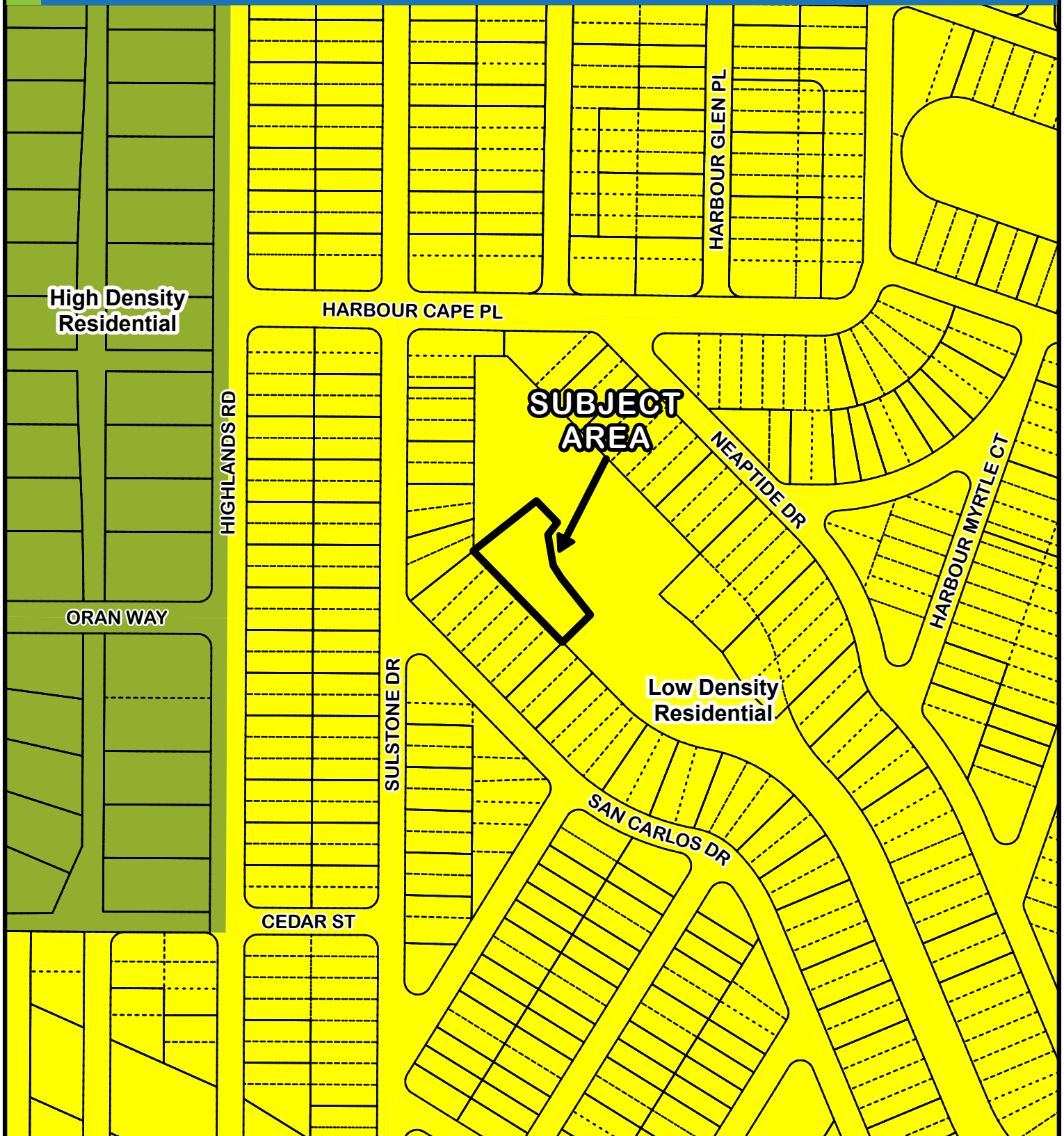
This map is a representation of compiled public information. It is believed to be an accurate and true depiction for the stated purpose, but Charlotte County and its employees make no guarantees, implied or otherwise, to the accuracy, or completeness. We therefore do not accept any responsibilities as to its use. This is not a survey or is it to be used for design. Reflected Dimensions are for informational purposes only and may have been rounded to the nearest tenth. For precise dimensions, please refer to recorded plats and related documents.

© Copyright 2025 Port Charlotte, FL by Charlotte County
Date Saved: 2/5/2025 9:42 AM By: Finnerty-SR18934

M:\Departments\LIS\Projects\Petition_Maps\Land_Development\2025\SV\SV-25-02\SV_25_02.aprx

CHARLOTTE COUNTY

FLUM Designations for SV-25-02



10/40/23 Mid-County



This map is a representation of compiled public information. It is believed to be an accurate and true depiction for the stated purpose, but Charlotte County and its employees make no guarantees, implied or otherwise, to the accuracy, or completeness. We therefore do not accept any responsibilities as to its use. This is not a survey or is it to be used for design. Reflected Dimensions are for informational purposes only and may have been rounded to the nearest tenth. For precise dimensions, please refer to recorded plats and related documents.

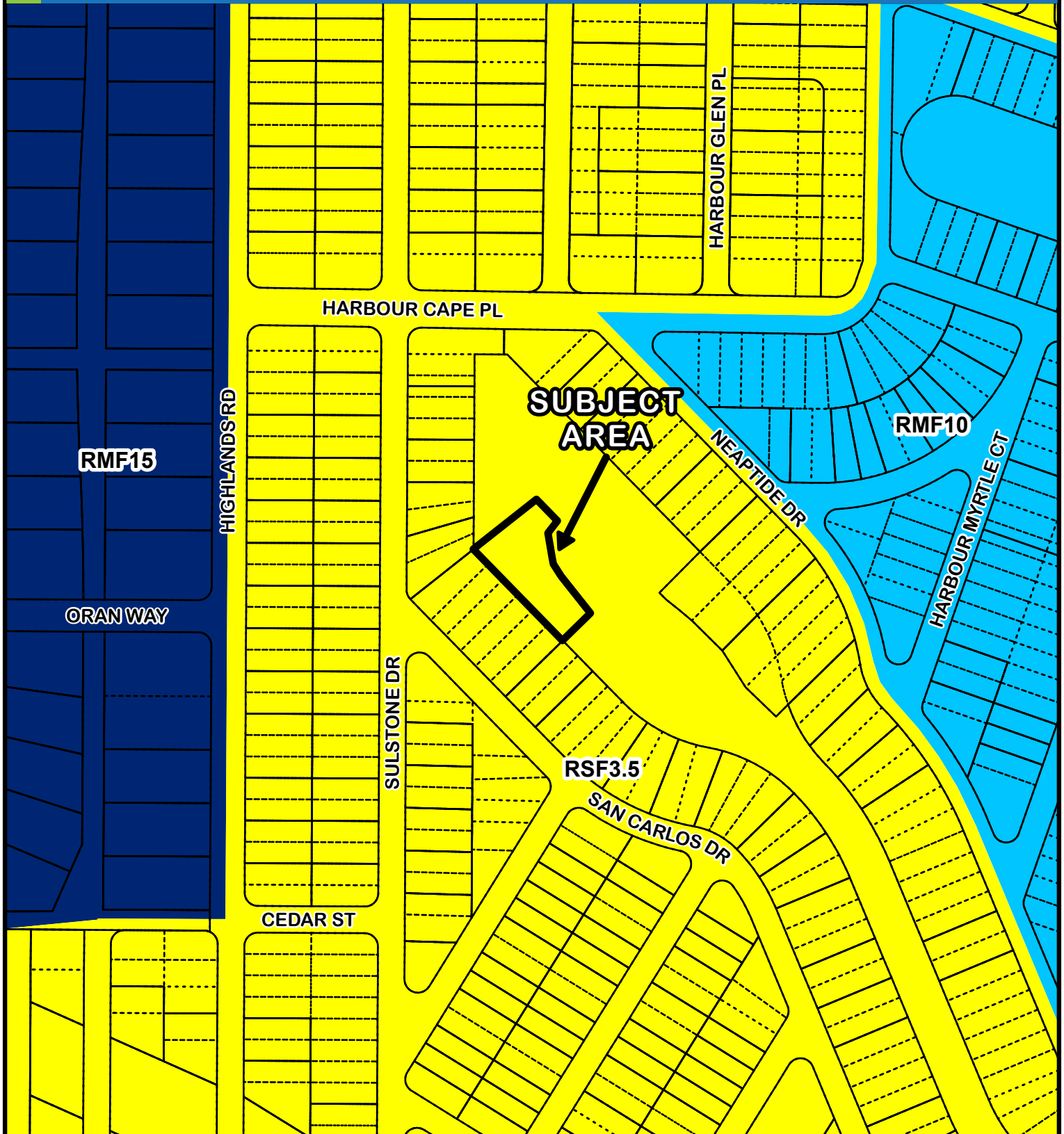
© Copyright 2025 Port Charlotte, FL by Charlotte County

Date Saved: 3/8/2025 4:04 PM By: Finnerty-SR18934

M:\Departments\GIS\Projects\Petition_Maps\Land_Development\2025\SV\SV-25-02\SV_25_02.aprx

CHARLOTTE COUNTY

Zoning Designations for SV-25-02



10/40/23 Mid-County



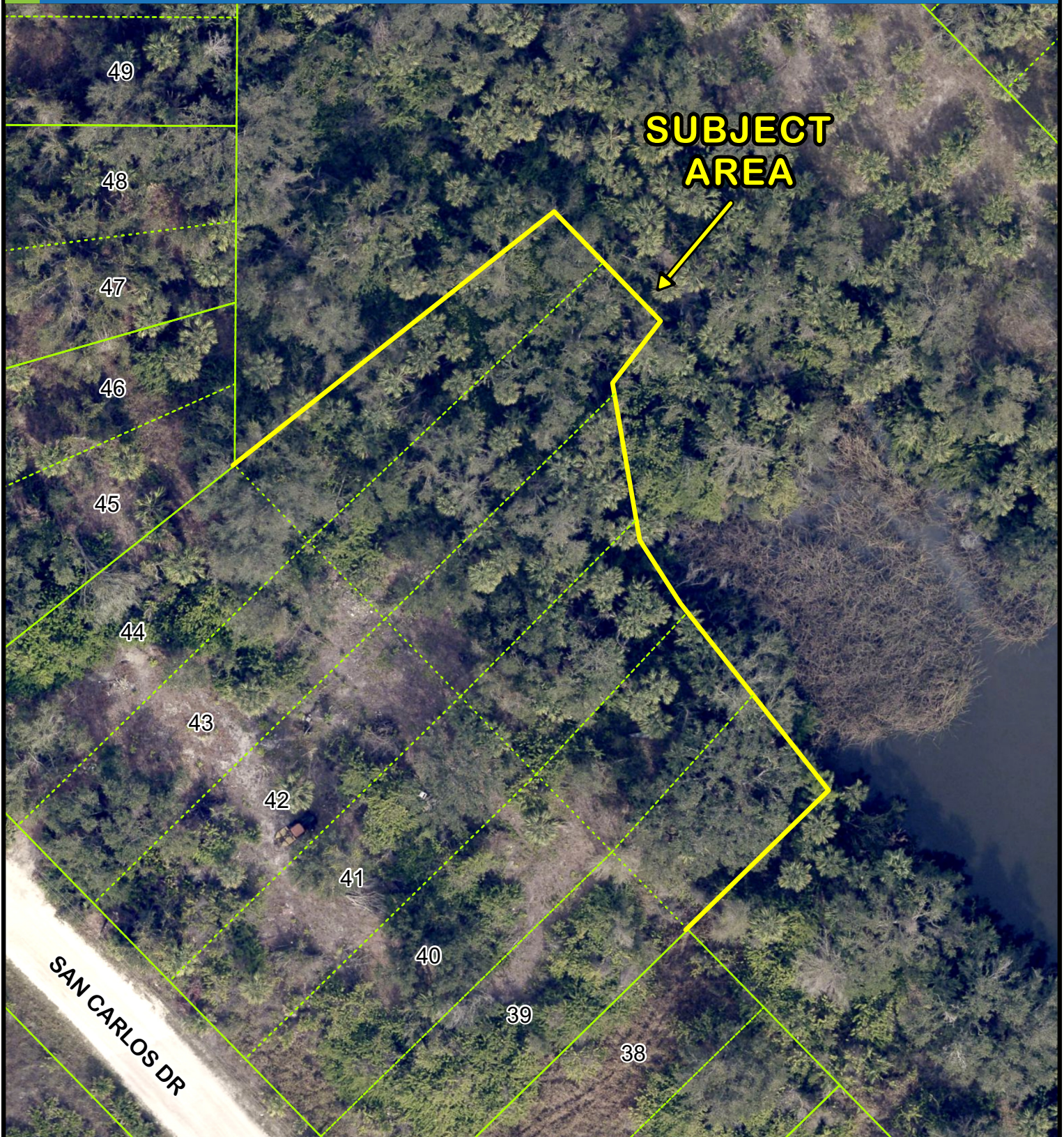
This map is a representation of compiled public information. It is believed to be an accurate and true depiction for the stated purpose, but Charlotte County and its employees make no guarantees, implied or otherwise, to the accuracy, or completeness. We therefore do not accept any responsibilities as to its use. This is not a survey or is it to be used for design. Reflected Dimensions are for informational purposes only and may have been rounded to the nearest tenth. For precise dimensions, please refer to recorded plats and related documents.

© Copyright 2025 Port Charlotte, FL by Charlotte County
Date Saved: 3/8/2025 4:04 PM By: Finnerty-SR18934

M:\Departments\GIS\Projects\Petition_Maps\Land_Development\2025\SV\SV-25-02\SV_25_02.aprx

CHARLOTTE COUNTY

Proposed Changes for SV-25-02



10/40/23 Mid-County



This map is a representation of compiled public information. It is believed to be an accurate and true depiction for the stated purpose, but Charlotte County and its employees make no guarantees, implied or otherwise, to the accuracy, or completeness. We therefore do not accept any responsibilities as to its use. This is not a survey or is it to be used for design. Reflected Dimensions are for informational purposes only and may have been rounded to the nearest tenth. For precise dimensions, please refer to recorded plats and related documents.

© Copyright 2025 Port Charlotte, FL by Charlotte County
Date Saved: 3/8/2025 8:17 PM By: Finnerty-SR18934

M:\Departments\GIS\Projects\Petition_Maps\Land_Development\2025\SV\SV-25-02\SV_25_02.aprx

CHARLOTTE COUNTY

Proposed Easements for SV-25-02



10/40/23 Mid-County



This map is a representation of compiled public information. It is believed to be an accurate and true depiction for the stated purpose, but Charlotte County and its employees make no guarantees, implied or otherwise, to the accuracy, or completeness. We therefore do not accept any responsibilities as to its use. This is not a survey or is it to be used for design. Reflected Dimensions are for informational purposes only and may have been rounded to the nearest tenth. For precise dimensions, please refer to recorded plats and related documents.

© Copyright 2025 Port Charlotte, FL by Charlotte County
Date Saved: 3/8/2025 8:17 PM By: Finnerty-SR18934

M:\Departments\GIS\Projects\Petition_Maps\Land_Development\2025\SV\SV-25-02\SV_25_02.aprx