

INDEX OF STRUCTURE PLANS

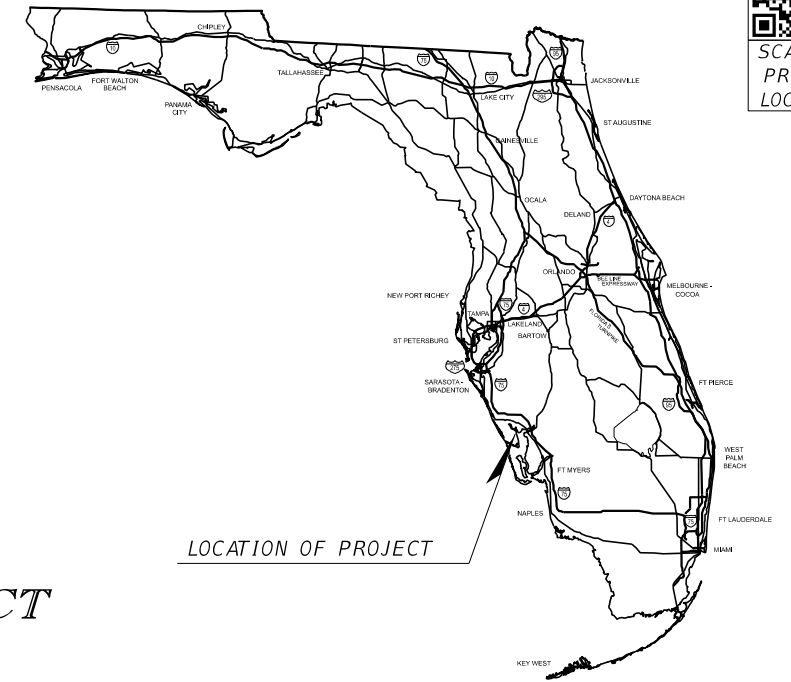
SHEET NO.	SHEET DESCRIPTION
B1-01	KEYSHEET
B1-02	SIGNATURE SHEET
B1-03	GENERAL NOTES (1)
B1-04	GENERAL NOTES (2)
B1-05	GENERAL NOTES (3)
B1-06	SUMMARY OF QUANTITIES
B1-07	GENERAL PLAN
B1-08	BRIDGE SECTION
B1-09	GENERAL CONCRETE SPALL REPAIR DETAILS
B1-10	GENERAL CONCRETE SPALL REPAIR DETAILS
B1-11	REPAIR LOCATION PHOTOGRAPHS (1)
B1-12	REPAIR LOCATION PHOTOGRAPHS (2)

CHARLOTTE COUNTY, FLORIDA

CONTRACT PLANS

CHARLOTTE COUNTY PUBLIC WORKS

CR-775 OVER AINGER CREEK BRIDGE REPAIR PROJECT



SCAN FOR PROJECT LOCATION

GOVERNING STANDARDS & SPECIFICATIONS:
 FLORIDA DEPARTMENT OF TRANSPORTATION,
 DESIGN STANDARDS DATED FY 2024-25,
 AND STANDARD SPECIFICATIONS FOR ROAD AND
 BRIDGE CONSTRUCTION DATED FY 2024-25,
 AS AMENDED BY CONTRACT DOCUMENTS.

FOR DESIGN STANDARDS CLICK ON "STANDARD PLANS FOR
 ROAD AND BRIDGE CONSTRUCTION" AT THE FOLLOWING WEB
 SITE: [HTTPS://WWW.FDOT.GOV/DESIGN/STANDARDPLANS/](https://www.fdot.gov/design/standardplans/)

SHOP DRAWINGS
 TO BE SUBMITTED TO:

LEO E. RODRIGUEZ, P.E.
 CENTRO CONSULTING GROUP, LLC
 2050 MIZZEN WAY
 WESLEY CHAPEL, FL 33543

PLANS PREPARED BY:

LEO E. RODRIGUEZ, P.E.
 PHONE: (435)-932-5627
 CENTRO CONSULTING GROUP, LLC
 2050 MIZZEN WAY
 WESLEY CHAPEL, FL 33543

NOTE: THE SCALE OF THESE PLANS MAY
 HAVE CHANGED DUE TO REPRODUCTION.

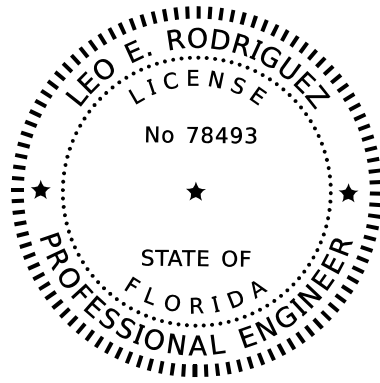
GOOGLE EARTH LINK PROVIDED FOR BRIDGE LOCATION
<https://maps.app.goo.gl/THRtZMdzeE88WjS8B6>

KEY SHEET REVISIONS		
DATE	BY	DESCRIPTION

ENGINEER OF RECORD: LEO E. RODRIGUEZ, P.E.

P.E. NO.: 78493

COUNTY PROJECT MANAGER: KELLY SLAUGHTER



THIS ITEM HAS BEEN DIGITALLY
SIGNED AND SEALED BY

ON THE DATE ADJACENT TO THE SEAL.
SIGNATURE MUST BE VERIFIED ON
ANY ELECTRONIC COPIES.

CENTRO CONSULTING GROUP, LLC
2050 MIZZEN WAY
WESLEY CHAPEL, FL 33543
LEO E. RODRIGUEZ, P.E. NO. 78493

THE ABOVE NAMED PROFESSIONAL ENGINEER SHALL BE RESPONSIBLE FOR THE
FOLLOWING SHEETS IN ACCORDANCE WITH RULE 61G15-23.004, F.A.C.

STRUCTURE PLANS

SHEET NO. SHEET DESCRIPTION

- B1-01 KEYSHEET
- B1-02 SIGNATURE SHEET
- B1-03 GENERAL NOTES (1)
- B1-04 GENERAL NOTES (2)
- B1-05 GENERAL NOTES (3)
- B1-06 SUMMARY OF QUANTITIES
- B1-07 GENERAL PLAN
- B1-08 BRIDGE SECTION
- B1-09 GENERAL CONCRETE SPALL REPAIR DETAILS
- B1-10 GENERAL CONCRETE SPALL REPAIR DETAILS
- B1-11 REPAIR LOCATION PHOTOGRAPHS (1)
- B1-12 REPAIR LOCATION PHOTOGRAPHS (2)

THE OFFICIAL RECORD OF THIS SHEET IS THE ELECTRONIC FILE DIGITALLY SIGNED AND SEALED UNDER RULE 61G15-23.004, F.A.C.
MADE BY: LER
REVIEWED BY: ES

REVISIONS						CENTRO CONSULTING GROUP			CHARLOTTE COUNTY PUBLIC WORKS			SHEET TITLE: SIGNATURE SHEET		REF. DWG. NO.
DATE	BY	DESCRIPTION	DATE	BY	DESCRIPTION	LEO E. RODRIGUEZ • FL P.E. LICENSE NUMBER: 78493 CENTRO CONSULTING GROUP, LLC • WESLEY CHAPEL, FL 33543 FL CERTIFICATE OF AUTHORIZATION: 36351 (435) 932-5627 • LEO@CENTROCONSULTINGGROUP.COM			ROAD NO.	COUNTY	FINANCIAL PROJECT NO.	PROJECT NAME: CR-775 BRIDGE NO. 010062 OVER AINGER CREEK		SHEET NO.
									N/A	CHARLOTTE	N/A			B1-2

GENERAL NOTES

DESIGN SPECIFICATIONS:

1. AMERICAN ASSOCIATION OF STATE HIGHWAY AND TRANSPORTATION OFFICIALS (AASHTO) LRFD BRIDGE DESIGN SPECIFICATION (9TH EDITION, 2022) AND APPROVED INTERIMS AS SPECIFIED IN THE STRUCTURES DESIGN GUIDELINES.
2. FLORIDA DEPARTMENT OF TRANSPORTATION (FDOT) STRUCTURES DESIGN GUIDELINES (JANUARY 2024).

DRAWINGS AND DIMENSIONS:

1. DO NOT SCALE DRAWINGS.
2. VERIFY RELEVANT EXISTING FIELD CONDITIONS AND DIMENSIONS PRIOR TO COMMENCING REPAIRS OR ORDERING ANY MATERIALS. NOTIFY THE ENGINEER OF ANY DISCREPANCIES FOUND.
3. ALL DIMENSIONS ARE IN FEET AND INCHES.

REINFORCING STEEL:

1. ALL REINFORCING STEEL SHALL BE ASTM A615, GRADE 60. PER SPECIFICATION SECTION 415.
2. ALL DIMENSIONS PERTAINING TO LOCATION OF REINFORCEMENT ARE TO CENTERLINE OF BARS EXCEPT WHERE THE CLEAR DIMENSION IS SHOWN TO FACE OF CONCRETE.
3. REINFORCEMENT DETAIL DIMENSIONS ARE OUT-TO-OUT OF BARS.
4. TYPICAL REINFORCING BARS ARE DESIGNATED THUS:



ENVIRONMENT:

LOCATION - COASTAL (SALT-WATER)
 SUPERSTRUCTURE: EXTREMELY AGGRESSIVE (ASSUMED)
 SUBSTRUCTURE: EXTREMELY AGGRESSIVE (ASSUMED)

PLAN DIMENSIONS:

ALL DIMENSIONS IN THESE PLANS ARE GIVEN EITHER HORIZONTALLY OR VERTICALLY. UNLESS OTHERWISE NOTED DECK JOINT OPENINGS ARE GIVEN FOR A MEAN TEMPERATURE OF 70°F.

EXISTING PLANS:

STRUCTURE BUILT IN 1981. NO EXISTING PLANS AVAILABLE.

DIMENSION VERIFICATION:

THE DIMENSIONS, ELEVATIONS, AND INTERSECTION ANGLES SHOWN ARE BASED ON LIMITED INFORMATION FROM EXISTING DOCUMENTS AND FIELD MEASUREMENTS. VERIFY THE DATA BEFORE CONSTRUCTION OR ORDERING MATERIALS.

VERTICAL DATUM:

PLAN ELEVATIONS ARE IN FEET AND REFER TO NAVD88 DATUM. VERIFY THE RELEVANT ELEVATIONS IN THE FIELD.

UTILITIES:

LOCATE RELEVANT UTILITIES (INCLUDING SUBAQUEOUS CHANNEL CROSSINGS) BEFORE COMMENCING CONSTRUCTION. CONTACT SUNSHINE 811 AND ANY OTHER LOCAL UTILITIES TO VERIFY THE UTILITIES EXISTING AT THE CONSTRUCTION SITE. IF ANY UTILITIES CONFLICT WITH PROPOSED CONSTRUCTION METHODS, MATERIALS, OR EQUIPMENT, NOTIFY THE ENGINEER.

UTILITIES: (CONTINUED)

CHARLOTTE COUNTY UTILITIES - SW (941) 764-4309
 CENTURYLINK (850) 599-1444
 COMCAST (239) 253-7642
 FLORIDA POWER & LIGHT - CHARLOTTE (386) 586-6403

INCIDENTAL ITEMS:

PAYMENT FOR INCIDENTAL ITEMS NOT SPECIFICALLY COVERED IN THE INDIVIDUAL PAY ITEMS SHALL BE INCLUDED IN THE CONTRACT UNIT PRICE FOR BID ITEMS CONTAINED IN THIS CONTRACT.

CONCRETE:

ALL CONCRETE SHALL BE IN ACCORDANCE WITH SECTION 346 OF THE FDOT SPECIFICATIONS.

JOINTS IN CONCRETE:

CONSTRUCTION JOINTS WILL BE PERMITTED ONLY AT LOCATIONS INDICATED ON THE PLANS. ADDITIONAL CONSTRUCTION JOINTS OR ALTERATIONS TO THOSE SHOWN SHALL REQUIRE APPROVAL OF THE ENGINEER.

PHASING OF WORK:

WORK PHASING AND PROGRESSION OF THE WORK SHALL CONFORM WITH THE TRAFFIC CONTROL NOTES AND THE NOTES AND DETAILS IN THE CONSTRUCTION DRAWINGS AND APPLICABLE STANDARDS.

CONCRETE RESTORATION:

FOR REQUIREMENTS ON SURFACE PREPARATION MIXING, PLACING, FINISHING, MATERIAL, AND OTHER RELATED ITEMS, REFER TO THE FDOT SPECIFICATIONS.

SITE CONDITIONS:

BE AWARE OF THE SITE CONDITIONS REGARDING WATER DEPTH AND DO NOT DISTURB THE HABITAT.

CONCRETE COVER:

CONCRETE COVER SHOWN IN THE PLANS DOES NOT INCLUDE PLACEMENT OR FABRICATION TOLERANCES UNLESS SHOWN AS "MINIMUM COVER". SEE FDOT SPECIFICATIONS FOR ALLOWABLE TOLERANCES.

MATERIAL PRODUCTS:

MATERIAL MEETING THE REQUIREMENTS OF THE FDOT APPROVED PRODUCTS LIST (APL) AND PLANS AND SPECIFICATIONS SHALL BE INSTALLED IN ACCORDANCE WITH APPROVED MANUFACTURER'S RECOMMENDATIONS.

MAINTENANCE OF NAVIGATION CHANNEL:

NOTIFY LT. CLARK SANFORD AT THE USCG SECTOR ST. PETERSBURG AT 813-228-2191 EXT. 8105 PRIOR TO THE COMMENCEMENT OF CONSTRUCTION ACTIVITIES, IN ADVANCE OF ACTIONS DURING BRIDGE CONSTRUCTION OR DEMOLITION WHICH POTENTIALLY AFFECT WATERWAY USERS AND PRIOR TO THE PLACEMENT OF ANY FLOATING CONSTRUCTION EQUIPMENT IN THE WATERWAY. NOTIFY NO LESS THAN 60 DAYS IN ADVANCE OF ACTIONS WHICH COULD POTENTIALLY AFFECT THE WATERWAY.

MARINE TRAFFIC:

KEEP ONE CHANNEL OPEN TO TRAFFIC AT ALL TIMES.

PROTECTION OF WATER RESOURCES:

1. CONDUCT ACTIVITIES IN A MANNER TO AVOID POLLUTION OF SURFACE AND GROUND WATER AND WETLANDS. THE CONSTRUCTION METHODS SHALL PROTECT WETLAND AND SURFACE WATER AREAS FROM DAMAGE DUE TO MECHANICAL GRADING, EROSION, SEDIMENTATION, VEHICULAR TRAFFIC, AND TURBID DISCHARGES. NO STORAGE OR STOCKPILING OF EQUIPMENTS IS ALLOWED WITHIN ANY WETLAND AREA UNLESS SPECIFICALLY AUTHORIZED UNDER PERMIT. WATER DIRECTLY DERIVED FROM CONSTRUCTION ACTIVITIES SHALL BE COLLECTED IN RETENTION AREAS TO ALLOW SETTLING OF SUSPENDED MATERIALS. ALL MONITORING OF ANY WATER AREAS THAT ARE AFFECTED BY CONSTRUCTION ACTIVITIES SHALL BE THE RESPONSIBILITY OF THE CONTRACTOR.
2. IMMEDIATELY REMOVE DEBRIS THAT FALLS IN THE WATER AT THE CONTRACTOR'S OWN EXPENSE.

OIL, FUEL AND HAZARDOUS SUBSTANCE SPILL PREVENTION:

PREPARE A SPILL CONTINGENCY PLAN IN ACCORDANCE WITH 40CFR, PART 109. THE PLAN IS REQUIRED TO PREVENT OIL, FUEL OR OTHER HAZARDOUS SUBSTANCES FROM ENTERING THE AIR, GROUND, DRAINAGE, AND LOCAL BODIES OR WETLANDS. IN THE EVENT THAT A SPILL OCCURS, DESPITE DESIGN AND PROCEDURAL CONTROLS, TAKE IMMEDIATE ACTION TO CONTAIN AND CLEANUP THE SPILL AND REPORT THE SPILL IMMEDIATELY TO THE COUNTY'S REPRESENTATIVE. SUBMIT A WRITTEN REPORT PROVIDING CERTIFICATION OF COMMITMENT OF MANPOWER, EQUIPMENT AND MATERIALS NECESSARY TO PREVENT THE SPREAD AND EFFECT EXPEDITIOUS CLEANUP AND DISPOSAL.

FISH AND WILDLIFE RESOURCES PROTECTION:

1. CONTROL AND MINIMIZE INTERFERENCE WITH, DISTURBANCE TO, AND DAMAGE TO FISH AND WILDLIFE RESOURCES WHERE APPROPRIATE. THE ENVIRONMENTAL PROTECTION PLAN SHOULD LIST ANY THREATENED AND ENDANGERED SPECIES THAT NEED SPECIFIC PROTECTION MEASURES. THE PERSON RESPONSIBLE FOR THE ENVIRONMENTAL PROTECTION PLAN MUST IDENTIFY THE THREATENED AND ENDANGERED SPECIES LISTED. IF THE CONTRACTOR OBSERVES ANY ACTIVITY THAT MIGHT ADVERSELY IMPACT THREATENED OR ENDANGERED SPECIES, IMMEDIATELY NOTIFY THE COUNTY AND THE COUNTY'S REPRESENTATIVE. THE COUNTY'S REPRESENTATIVE HOLDS THE SOLE AUTHORITY TO STOP WORK, CREATE A BUFFER AREA, OR RESTART CONSTRUCTION ACTIVITIES.
2. IN THE EVENT THAT THE COUNTY'S REPRESENTATIVE DETERMINES THE ADVERSE IMPACT TO THREATENED OR ENDANGERED SPECIES MAY OCCUR AS A RESULT OF THE CONSTRUCTION ACTIVITIES, THE COUNTY SHALL NOTIFY THE CORPS OF ENGINEERS AND THE FISH AND WILDLIFE SERVICE. ADVERSE IMPACT IS DEFINED AS TO HARASS, HARM, PURSUE, HUNT, SHOOT, WOUND, KILL, TRAP, CAPTURE, COLLECT, OR TO ATTEMPT TO ENGAGE IN ANY SUCH CONDUCT.

REVISIONS						CHARLOTTE COUNTY PUBLIC WORKS			SHEET TITLE:		REF. DWG. NO.
DATE	BY	DESCRIPTION	DATE	BY	DESCRIPTION	ROAD NO.	COUNTY	FINANCIAL PROJECT NO.	GENERAL NOTES (1)		
						N/A	CHARLOTTE	N/A	CR-775 BRIDGE NO. 010062 OVER AINGER CREEK		SHEET NO.
											B1-3



LEO E. RODRIGUEZ • FL P.E. LICENSE NUMBER: 78493
 CENTRO CONSULTING GROUP, LLC • WESLEY CHAPEL, FL 33543
 FL CERTIFICATE OF AUTHORIZATION: 36351
 (435) 932-5627 • LEO@CENTROCONSULTINGGROUP.COM

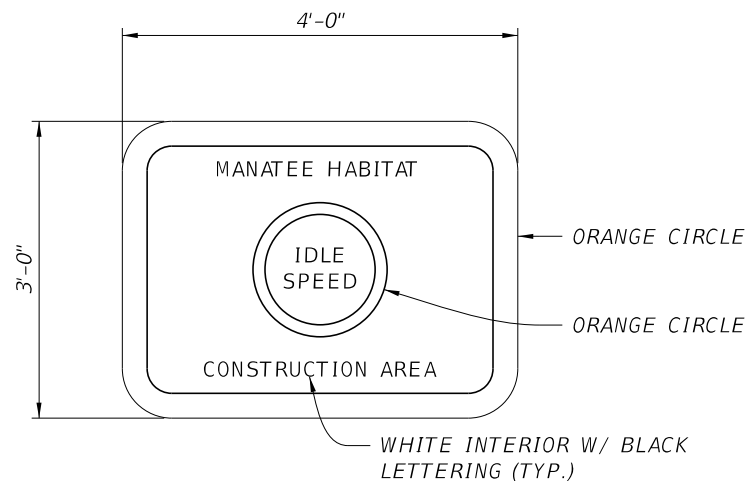
MADE BY: LER REVIEWED BY: ES THE OFFICIAL RECORD OF THIS SHEET IS THE ELECTRONIC FILE DIGITALLY SIGNED AND SEALED UNDER RULE 61G15-23.004, F.A.C.

GENERAL NOTES

SPECIAL MANATEE PROTECTION CONDITIONS:

MANATEES MAY BE PRESENT IN THE AREA. THE CONTRACTOR SHALL COMPLY WITH THE FLORIDA FISH AND WILDLIFE CONSERVATION COMMISSION'S STANDARD MANATEE PROTECTION CONSTRUCTION CONDITIONS FOR IN-WATER WORK.

1. ALL PERSONNEL ASSOCIATED WITH THE PROJECT SHALL BE INSTRUCTED ABOUT THE PRESENCE OF MANATEES AND MANATEE SPEED ZONES, AND THE NEED TO AVOID COLLISIONS WITH AND INJURY TO MANATEES. ALL CONSTRUCTION PERSONNEL IS ADVISED THAT THERE ARE CIVIL AND CRIMINAL PENALTIES FOR HARMING, HARASSING, OR KILLING MANATEES WHICH ARE PROTECTED UNDER THE MARINE MAMMAL PROTECTION ACT, THE ENDANGERED SPECIES ACT, AND THE FLORIDA MANATEE SANCTUARY ACT.
2. ALL VESSELS ASSOCIATED WITH THE CONSTRUCTION PROJECT SHALL OPERATE AT "IDLE SPEED/NO WAKE" AT ALL TIMES WHILE IN THE IMMEDIATE AREA AND WHILE IN WATER WHERE THE DRAFT OF THE VESSEL PROVIDES LESS THAN A FOUR-FOOT CLEARANCE FROM THE BOTTOM, ALL VESSELS WILL FOLLOW ROUTES OF DEEP WATER WHENEVER POSSIBLE.
3. SILTATION OR TURBIDITY BARRIERS SHALL BE MADE OF MATERIAL IN WHICH MANATEES CANNOT BECOME ENTANGLED, SHALL BE PROPERLY SECURED, AND ENTRAPMENT. BARRIERS MUST NOT IMPEDE MANATEE MOVEMENT.
4. ALL ONSITE PROJECT PERSONNEL ARE RESPONSIBLE FOR OBSERVING WATER-RELATED ACTIVITIES FOR THE PRESENCE OF MANATEE(S) COMES WITHIN 50 FEET OF THE OPERATION. ACTIVITIES WILL NOT RESUME UNTIL THE MANATEE(S) HAS MOVED BEYOND THE 50-FOOT RADIUS OF THE PROJECT OPERATION, OR UNTIL 30 MINUTES ELAPSES IF THE MANATEE(S) HAS NOT REAPPEARED WITHIN 50 FEET OF THE OPERATION, ANIMALS MUST NOT BE HERDED AWAY OR HARASSED INTO LEAVING.
5. ANY COLLISIONS WITH OR INJURY TO A MANATEE SHALL BE REPORTED IMMEDIATELY TO THE FWC HOTLINE AT 1-888-404-FWCC. COLLISION AND/OR INJURY SHOULD ALSO BE REPORTED TO THE U.S. FISH AND WILDLIFE SERVICE IN JACKSONVILLE (1-904-232-2580) FOR NORTH FLORIDA OR VERO BEACH (1-561-562-3909) FOR SOUTH FLORIDA.
6. TEMPORARY SIGNS CONCERNING MANATEES SHALL BE POSTED PRIOR TO AND DURING ALL IN-WATER PROJECT ACTIVITIES. ALL SIGNS ARE TO BE REMOVED BY THE PERMITTEE UPON COMPLETION OF THE PROJECT. AWARENESS SIGNS THAT HAVE ALREADY BEEN APPROVED FOR THIS USE BY THE FLORIDA FISH AND WILDLIFE CONSERVATION COMMISSION (FWC) MUST BE USED. ONE SIGN MEASURING AT LEAST 3 FT. BY 4 FT. WHICH READS CAUTION: MANATEE AREA MUST BE POSTED.



7. A SECOND SIGN MEASURING AT LEAST 8½" x 11" EXPLAINING THE REQUIREMENTS FOR "IDLE SPEED/NO WAKE" AND THE SHUT DOWN OF IN-WATER OPERATIONS MUST BE POSTED IN A LOCATION PROMINENTLY VISIBLE TO ALL PERSONNEL ENGAGED IN WATER-RELATED ACTIVITIES.

SPECIAL MANATEE PROTECTION CONDITIONS: (CONTINUED)

CAUTION: MANATEE HABITAT

All Project Vessels
IDLE SPEED / NO WAKE

When a manatee is within 50 feet of work
all in-water activities must
SHUT DOWN

Report any collision or injury to:
1-888-404-FWCC (1-888-404-3922)

Florida Fish and Wildlife Conservation Commission

ALL SIGNS ARE TO BE REMOVED BY THE CONTRACTOR UPON COMPLETION OF THE PROJECT.

MADE BY: LER
REVIEWED BY: ES

THE OFFICIAL RECORD OF THIS SHEET IS THE ELECTRONIC FILE DIGITALLY SIGNED AND SEALED UNDER RULE 61G15-23.004, F.A.C.

REVISIONS						CHARLOTTE COUNTY PUBLIC WORKS			GENERAL NOTES (2)		REF. DWG. NO.
DATE	BY	DESCRIPTION	DATE	BY	DESCRIPTION	ROAD NO.	COUNTY	FINANCIAL PROJECT NO.	PROJECT NAME:		SHEET NO.
						N/A	CHARLOTTE	N/A	CR-775 BRIDGE NO. 010062 OVER AINGER CREEK		B1-4


 LEO E. RODRIGUEZ • FL P.E. LICENSE NUMBER: 78493
 CENTRO CONSULTING GROUP, LLC • WESLEY CHAPEL, FL 33543
 FL CERTIFICATE OF AUTHORIZATION: 36351
 (435) 932-5627 • LEO@CENTROCONSULTINGGROUP.COM

GENERAL NOTES

TRAFFIC CONTROL NOTES:

1. TRAFFIC SHALL BE MAINTAINED IN ACCORDANCE WITH THE EDITION OF THE FLORIDA DEPARTMENT OF TRANSPORTATION DESIGN STANDARDS (102-600 SERIES). MAINTENANCE OF TRAFFIC SHALL BE IN ACCORDANCE WITH THE FLORIDA DEPARTMENT OF TRANSPORTATION STANDARD SPECIFICATIONS FOR ROAD AND BRIDGE CONSTRUCTION, AND THE FEDERAL HIGHWAY ADMINISTRATION MANUAL ON UNIFORM TRAFFIC CONTROL DEVICES, 2009 EDITION.
2. THE EXISTING BRIDGE SHALL REMAIN OPEN TO VEHICULAR AND MARINE TRAFFIC AT ALL TIMES DURING REPAIRS. PHASED CONSTRUCTION WITH ONE-LANE CLOSURE IS ANTICIPATED.
3. THE CONTRACTOR SHALL NOTIFY LOCAL EMERGENCY AND RESCUE AGENCIES LOCATED IN THE PROJECT VICINITY INCLUDING BUT NOT LIMITED TO THOSE AGENCIES LISTED BELOW AS WELL AS THE ENGINEER 14 DAYS IN ADVANCE OF ANY COUNTY APPROVED LANE CLOSURES OR RESTRICTIONS, AND AGAIN 24 HOURS IN ADVANCE OF EACH SERIES OF LANE CLOSURES. ALL LANES MUST BE REOPENED TO NORMAL TRAFFIC WITHIN 12 HOURS DURING AN EVACUATION NOTICE FOR A HURRICANE OR ANY OTHER EMERGENCY EVENT AND SHALL REMAIN OPEN FOR THE DURATION OF THE EVENT AS DIRECTED BY THE ENGINEER.

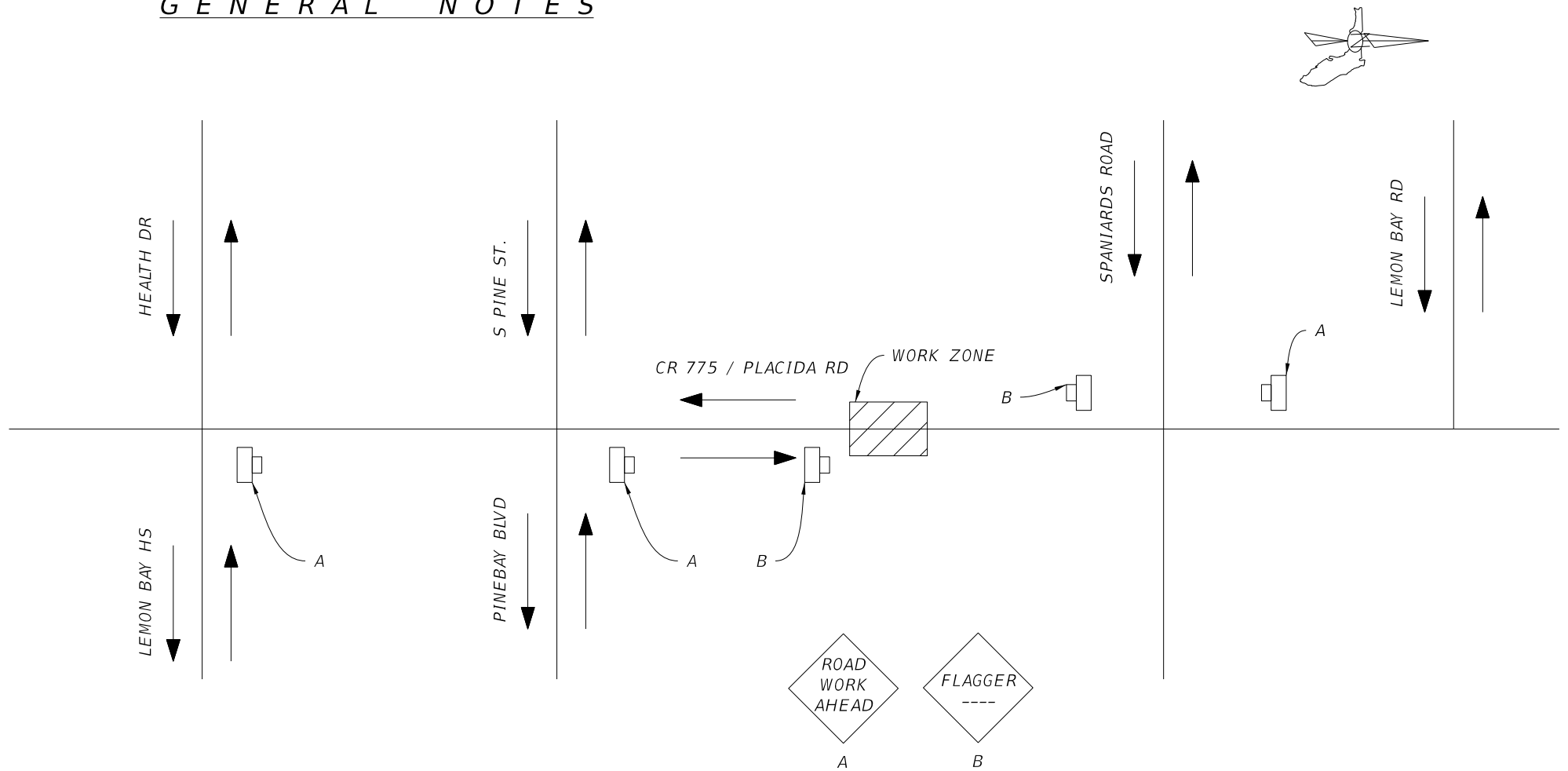
 CHARLOTTE COUNTY FIRE DEPARTMENT 10 - (941) 697-5400
 CHARLOTTE COUNTY FIRE DEPARTMENT 14 - (941) 697-1222
 CHARLOTTE COUNTY SHERIFF'S OFFICE - (941) 475-9005
 ENGLEWOOD AREA FIRE CONTROL DISTRICT - STATION 76 - (941) 474-3311
4. THE EXISTING POSTED SPEED OF 45 MPH IS TO BE MAINTAINED DURING CONSTRUCTION.
5. PERSONNEL WORKING ON THE MAINTENANCE OF TRAFFIC MUST HAVE THE RESPECTIVE APPLICABLE FDOT MOT QUALIFICATION OF ADVANCED, INTERMEDIATE AND FLAGGER BASED ON THEIR TEMPORARY TRAFFIC CONTROL DUTIES.
6. THE CONTRACTOR SHALL RESTORE ALL EXISTING PAVEMENT DAMAGED AS A RESULT OF CONSTRUCTION OR MOT OPERATIONS TO ORIGINAL CONDITION (PRIOR TO CONSTRUCTION) AS DETERMINED BY THE ENGINEER. ALL COSTS SHALL BE INCLUDED IN PAY ITEM 102-1 MAINTENANCE OF TRAFFIC (LS).
7. FOR TEMPORARY CONSTRUCTION SIGNS LOCATED IN PAVED AREAS, THE CONTRACTOR SHALL PROVIDE TEMPORARY SIGN SUPPORT WHICH DOES NOT PENETRATE THE PAVEMENT.
8. SEVEN DAYS PRIOR TO BEGINNING WORK INSTALL A PCMS IN EACH DIRECTION, 500' IN ADVANCE OF THE BRIDGE WITH THE FOLLOWING MESSAGES:

**BRIDGE
WORK**

MESSAGE 1

**BEGIN
<DAY>**

MESSAGE 2



THE OFFICIAL RECORD OF THIS SHEET IS THE ELECTRONIC FILE DIGITALLY SIGNED AND SEALED UNDER RULE 61G15-23.004, F.A.C.
MADE BY: LER
REVIEWED BY: ES

REVISIONS						CHARLOTTE COUNTY PUBLIC WORKS			SHEET TITLE:		REF. DWG. NO.
DATE	BY	DESCRIPTION	DATE	BY	DESCRIPTION	ROAD NO.	COUNTY	FINANCIAL PROJECT NO.	GENERAL NOTES (3)		
						N/A	CHARLOTTE	N/A	CR-775 BRIDGE NO. 010062 OVER AINGER CREEK		SHEET NO.
											B1-5


 LEO E. RODRIGUEZ • FL P.E. LICENSE NUMBER: 78493
 CENTRO CONSULTING GROUP, LLC • WESLEY CHAPEL, FL 33543
 FL CERTIFICATE OF AUTHORIZATION: 36351
 (435) 932-5627 • LEO@CENTROCONSULTINGGROUP.COM

BID ITEMS			
ITEM NO.	DESCRIPTION	QUANTITY	UNIT
101-1	MOBILIZATION	1.00	LS
102-1	MAINTENANCE OF TRAFFIC	1.00	LS
401-70-4	RESTORE SPALLED AREAS, POLYMER-MODIFIED PORTLAND CEMENT GROUT	170.00	CF
413-151	METHACRYLATE MONOMER	210.00	GA
413-154	CLEANING AND SEALING CONCRETE SURFACES: METHACRYLATES	10,407.00	SF
455-811-06	CATHODIC PROTECTION, F&I, OTHER MATERIAL ASSEMBLY	125.00	EA

NOTES:

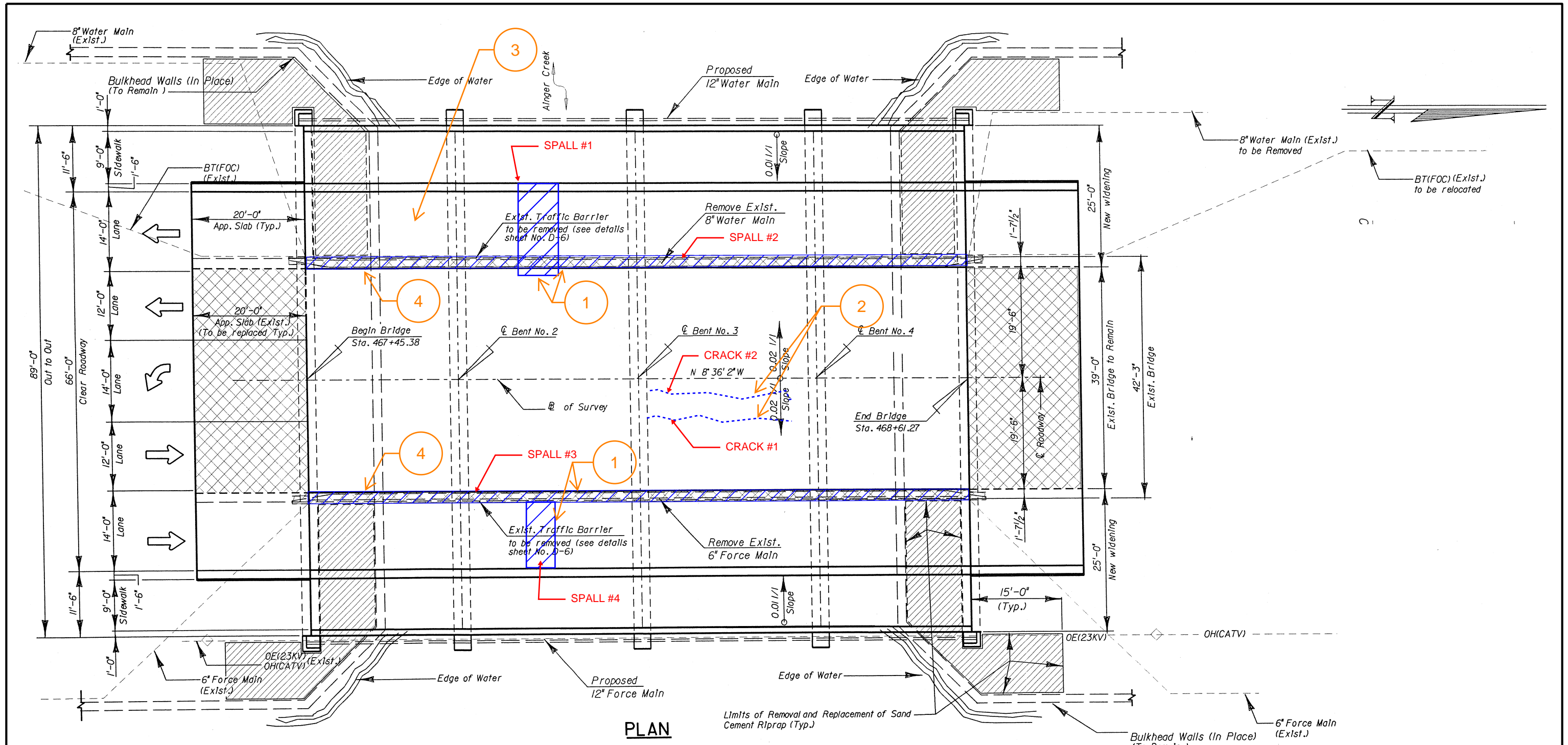
1. MOBILIZATION - THIS PAY ITEM IS LIMITED TO 5% OF THE TOTAL BID AMOUNT. ANY ADDITIONAL MOBILIZATION COSTS BEYOND THE 5% LIMIT SHALL BE INCLUDED IN OTHER PAY ITEMS THAT REQUIRE THE MOBILIZATION OF EQUIPMENT AND/OR LABOR.
2. MAINTENANCE OF TRAFFIC - CONTRACTOR SHALL BE RESPONSIBLE FOR MAINTAINING TRAFFIC AND USAGE OF THE EXISTING STREETS ADJACENT TO THE PROJECT. ALL TRAFFIC MAINTENANCE CONTROL SHALL BE IN ACCORDANCE WITH THE FLORIDA MANUAL OF TRAFFIC CONTROL AND SAFE PRACTICES FOR STREET AND HIGHWAY CONSTRUCTION, MAINTENANCE, AND UTILITY OPERATIONS AND APPROVED BY CHARLOTTE COUNTY. THE CONTRACTOR SHALL MAINTAIN THE ROAD OPEN AT ALL TIMES. LANE CLOSURES ARE PERMITTED FOR THIS PROJECT. THE CONTRACTOR MAY, AT THE CONTRACTOR'S OPTION, PROPOSE TO ALTERNATIVE TEMPORARY TRAFFIC CLOSURES PER FDOT INDEX 102-600 SERIES, FOR APPROVAL BY THE COUNTY ENGINEER
3. RESTORE SPALLED AREAS - CONSISTS OF RESTORING SPALLED AREAS AS NECESSARY PER THE STANDARD CONCRETE SPALL REPAIR DETAILS. TOTAL REPAIR QUANTITY ASSUMES 50% ADDITIONAL MATERIAL TO ACCOUNT FOR UNKNOWN DEFICIENCY EXTENTS:
4. SEAL BRIDGE SLAB-METHACRYLATE - CLEAN THE SURFACES OF THE ENTIRE BRIDGE UNDERSIDE AND THE TOP SIDE ALONG THE BRIDGE CONSTRUCTION JOINT. SEAL THE AREAS USING A HIGH MOLECULAR WEIGHT METHACRYLATE (HMWM) AS REQUIRED BY THESE PLANS.
5. CATHODIC PROTECTION - INSTALL EMBEDDED TYPE 1 GALVANIC ANODE WITHIN THE IDENTIFIED SPALLS. THIS WORK SHALL INCLUDE FURNISH, INSTALL AND TESTING OF THE GALVANIC ANODES.

SPALL/DELAMINATION REPAIR TABLE							
LOCATION	DESCRIPTION	DIMENSIONS					VOLUME (CF)
		LENGTH (FT.)	WIDTH (FT)	DEPTH (IN.)	MIN. REMOVAL DEPTH (IN.)	NO.	
SPAN 2	SPALL #1	16.00	7.000	-	4.00	1.00	37.33
SPAN 1 THRU 4	SPALL #2	116.00	0.750	-	4.00	1.00	29.00
SPAN 1 THRU 4	SPALL #3	116.00	0.750	-	4.00	1.00	29.00
SPAN 2	SPALL #4	10.67	5.000	-	4.00	1.00	17.78
UNKNOWN	UNKNOWN SPALL AREAS					1.00	56.56

NOTES:

1. MINIMUM REMOVAL DEPTH IS ESTIMATED FOR QUANTITY PURPOSES.

REVISIONS			DATE			DESCRIPTION			CENTRO CONSULTING GROUP			CHARLOTTE COUNTY PUBLIC WORKS			SHEET TITLE:		REF. DWG. NO.
DATE	BY	DESCRIPTION	DATE	BY	DESCRIPTION	LEO E. RODRIGUEZ • FL P.E. LICENSE NUMBER: 78493 CENTRO CONSULTING GROUP, LLC • WESLEY CHAPEL, FL 33543 FL CERTIFICATE OF AUTHORIZATION: 36351 (435) 932-5627 • LEO@CENTROCONSULTINGGROUP.COM			ROAD NO.	COUNTY	FINANCIAL PROJECT NO.	PROJECT NAME:		SHEET NO.			
									N/A	CHARLOTTE	N/A	CR-775 BRIDGE NO. 010062 OVER AINGER CREEK		B1-6			



PLAN

BRIDGE REPAIR SCOPE

1. SPALL REPAIRS AT DISCRETE BRIDGE LOCATIONS. THE CONTRACTOR SHALL LOCATE THE SPALL AREAS INDICATED IN THESE PLANS. SOUND AREAS WITHIN A 10-FT OFFSET OF THE SPALL IDENTIFIED IN THESE PLANS TO LOCATE ANY ADDITIONAL AREAS THAT ARE HOLLOW AND WITH POTENTIAL TO SPALL.
2. CLEAN AND SEAL CRACKS ALONG THE UNDERSIDE OF THE BRIDGE SLAB. IT IS EXPECTED CRACKS WILL BE SEALED WITH THE VERTICAL/OVERHEAD METHACRYLATE APPLICATION.
3. AFTER THE SPALL AND CRACK REPAIRS ARE COMPLETE, PROVIDE CLEAN AND COAT WITH A METHACRYLATE THE ENTIRE UNDERSIDE OF THE BRIDGE AND SIDEWALK. METHACRYLATE SHALL BE OF VERTICAL/OVERHEAD APPLICATION I.E. TRANSPOT-70 VERTICAL OR AN APPROVED EQUAL. SUBMIT THE PRODUCT TO THE ENGINEER FOR APPROVAL. THE METHACRYLATE SHALL BE INSTALLED PER MANUFACTURER'S RECOMMENDATIONS.
4. CLEAN AND SEAL CONSTRUCTION JOINT ALONG THE FULL LENGTH OF THE BRIDGE USING A METHACRYLATE PER SPECIFICATION SECTION 413. IT IS PREFERRED TO PERFORM THIS TASK PRIOR TO THE SPALL REPAIR TO AVOID WATER PENETRATION IMPACTING THE SPALL REPAIRS.

BRIDGE REPAIR SCOPE NUMBER

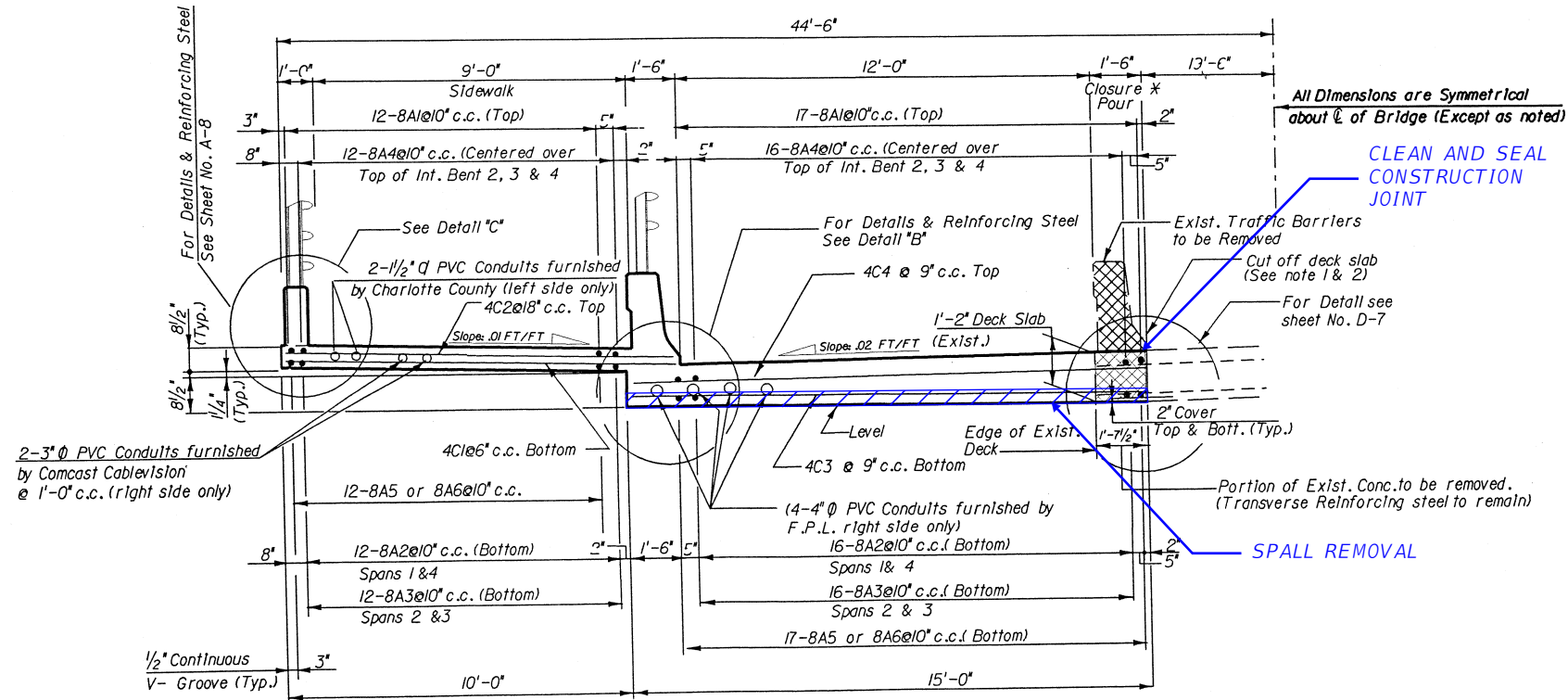
REVISIONS			REVISIONS		
DATE	BY	DESCRIPTION	DATE	BY	DESCRIPTION


 LEO E. RODRIGUEZ • FL P.E. LICENSE NUMBER: 78493
 CENTRO CONSULTING GROUP, LLC • WESLEY CHAPEL, FL 33543
 FL CERTIFICATE OF AUTHORIZATION: 36351
 (435) 932-5627 • LEO@CENTROCONSULTINGGROUP.COM

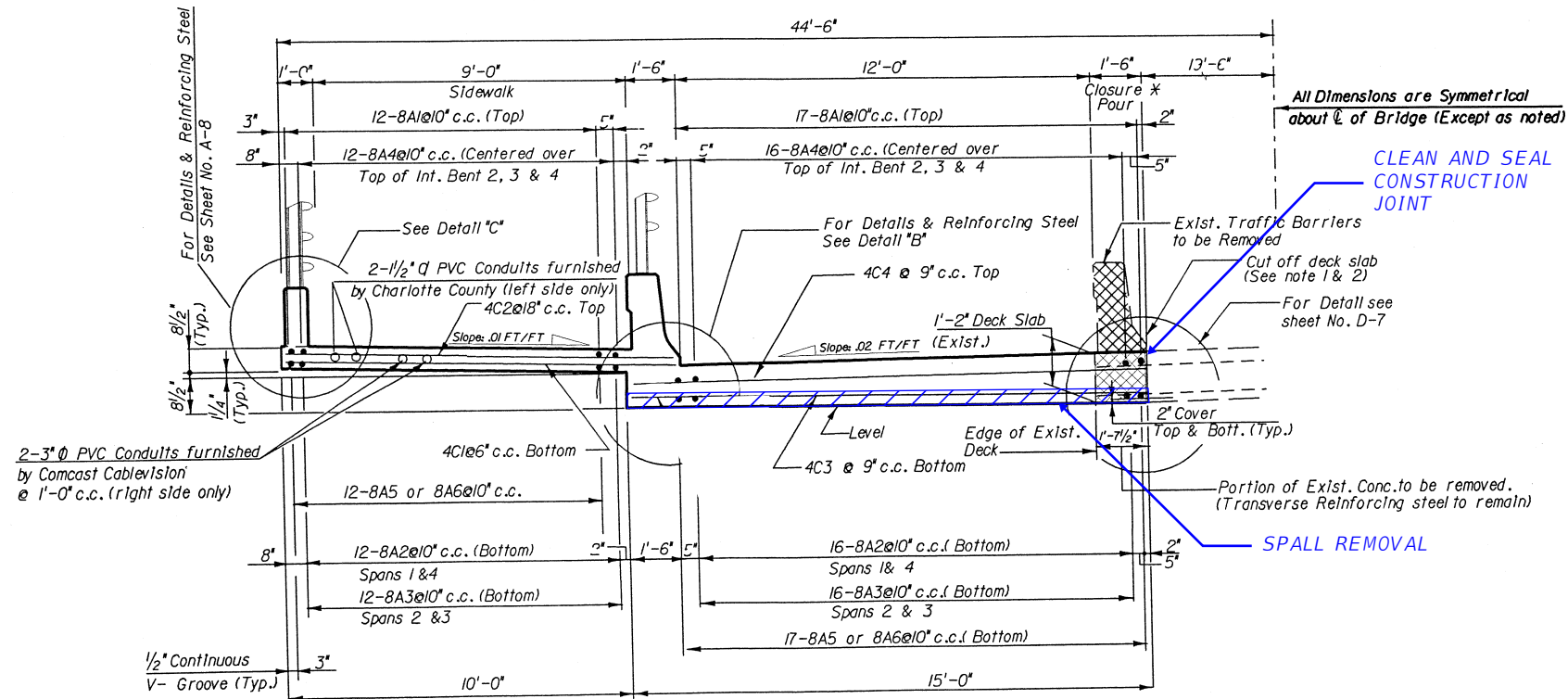
CHARLOTTE COUNTY PUBLIC WORKS		
ROAD NO.	COUNTY	FINANCIAL PROJECT NO.
N/A	CHARLOTTE	N/A

SHEET TITLE:		BRIDGE SECTION	REF. DWG. NO.
PROJECT NAME:		CR-775 BRIDGE NO. 010062 OVER AINGER CREEK	SHEET NO.
			B1-7

MADE BY: LER
 REVIEWED BY: ES
 THE OFFICIAL RECORD OF THIS SHEET IS THE ELECTRONIC FILE DIGITALLY SIGNED AND SEALED UNDER RULE 61G15-23.004, F.A.C.



**EAST SIDE BRIDGE SECTION
LOOKING SOUTH**



**WEST SIDE BRIDGE SECTION
LOOKING NORTH**

NOTES

1. THE FPL PVC CONDUITS ARE ACTIVE. COORDINATE WITH FPL AT MINIMUM 14-DAYS PRIOR TO COMMENCING WORK. FPL WILL DE-ENERGIZE THE LINES DURING THE REPAIR PROJECT UP TO 7-DAYS. ONCE THE REPAIR IS COMPLETED, COORDINATE WITH FPL TO ENERGIZE THE LINES. CARE NOT TO DAMAGE THE FPL LINES DURING THE BRIDGE REPAIR.
2. INSTALL TYPE 1 EMBEDDED GALVANIC ANODE AT SPALL #1 AND #4. MAXIMUM 18" SPACING.

REVISIONS

DATE	BY	DESCRIPTION	DATE	BY	DESCRIPTION


CENTRO CONSULTING GROUP
 LEO E. RODRIGUEZ • FL P.E. LICENSE NUMBER: 78493
 CENTRO CONSULTING GROUP, LLC • WESLEY CHAPEL, FL 33543
 FL CERTIFICATE OF AUTHORIZATION: 36351
 (435) 932-5627 • LEO@CENTROCONSULTINGGROUP.COM

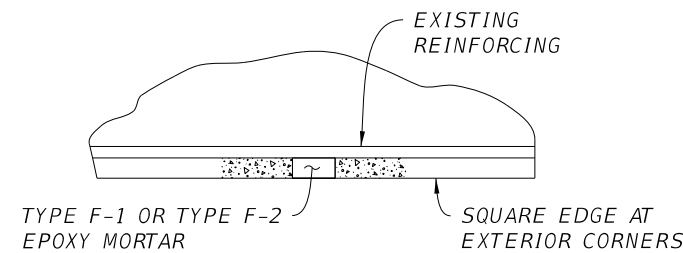
CHARLOTTE COUNTY PUBLIC WORKS		
ROAD NO.	COUNTY	FINANCIAL PROJECT NO.
N/A	CHARLOTTE	N/A

SHEET TITLE:	PLAN VIEW	REF. DWG. NO.
PROJECT NAME:	CR-775 BRIDGE NO. 010062 OVER AINGER CREEK	SHEET NO.
		B1-8

THE OFFICIAL RECORD OF THIS SHEET IS THE ELECTRONIC FILE DIGITALLY SIGNED AND SEALED UNDER RULE 61G15-23.004, F.A.C. MADE BY: LER REVIEWED BY: ES

GENERAL SPALL REPAIR NOTES

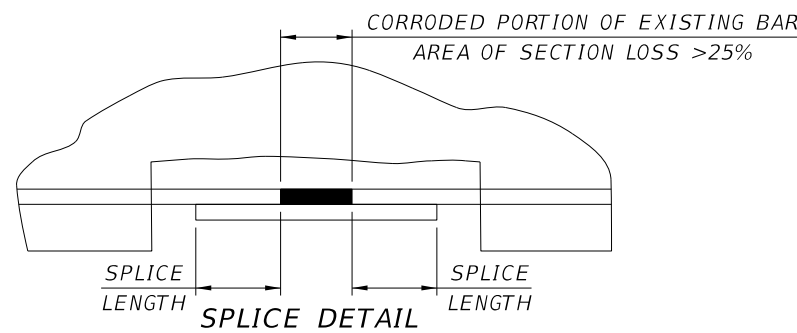
1. ABIDE BY SPECIFICATION SECTION 400 AND THE REPAIR NOTES BELOW.
2. THE SPALL REPAIR DETAILS SHOWN ON THIS SHEET ARE APPLICABLE TO HORIZONTAL (INCLUDING OVERHEAD) AND VERTICAL SURFACES. SEE SPECIFICATION SECTION 930 FOR ADDITIONAL MATERIAL REQUIREMENTS FOR CONCRETE REPAIR.
3. INSPECT, SOUND TEST, AND MARK THE PERIMETER OF THE PROPOSED CONCRETE REPAIR AREAS AS SHOWN ON THESE PLANS. SUBMIT PROPOSED REPAIR AREAS TO THE ENGINEER FOR APPROVAL.



SPALL REPAIR DETAIL 1

SPALL REPAIR DETAIL 1 NOTES

1. CHIP TO SOUND CONCRETE.
2. USE SPALL REPAIR DETAIL 2 IF MORE THAN HALF OF PERIMETER OF REINFORCING BAR IS EXPOSED OR BOND AROUND BAR IS BROKEN.
3. CLEAN REINFORCING STEEL AND CONCRETE SURFACES BY HAND GRIND AND/OR BRUSH CLEAN FOLLOWED BY BLOWING WITH COMPRESSED AIR.
4. PRIME THE SURFACE TO BE REPAIRED WITH A TYPE F-1/F-2 EPOXY COMPOUND IN SPECIFICATION SECTION 926.5. WHILE PRIMING MATERIAL IS TACKY, FILL VOIDS WITH RECOMMENDED PRODUCT TO ORIGINAL NEAT LINES. REMOVE AND RE-CLEAN THE CONCRETE SURFACE IF THE REPAIR MATERIAL IS NOT APPLIED WITHIN THE BONDING COMPOUND MANUFACTURER APPLICATION TIME WINDOW.

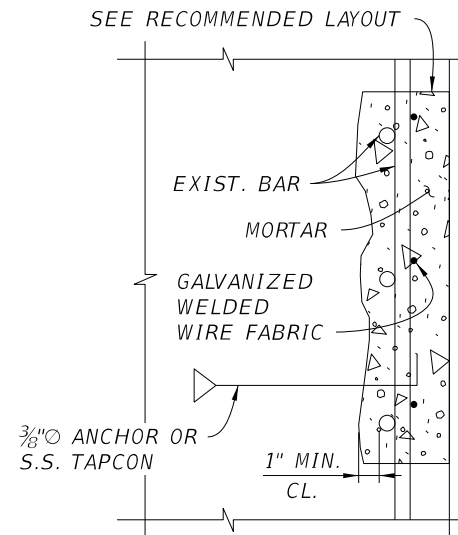


SPLICE NOTES

1. STAGGER SPLICES AND REPAIR PER SPALL REPAIR DETAIL 2.

MECHANICAL COUPLER DETAIL NOTES

1. AS AN ALTERNATIVE TO SPLICING OR DOWELING, THE CONTRACTOR MAY USE MECHANICAL COUPLERS. SUBMIT THE PROPOSED COUPLER TO THE ENGINEER FOR APPROVAL PRIOR TO USE.
2. REPAIR PER SPALL REPAIR DETAIL 2 AFTER INSTALLING MECHANICAL COUPLERS.

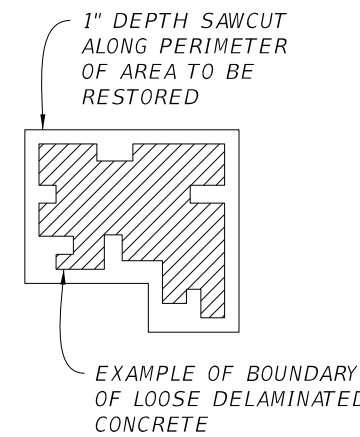


SPALL REPAIR DETAIL 2

SPALL REPAIR DETAIL 2 NOTES

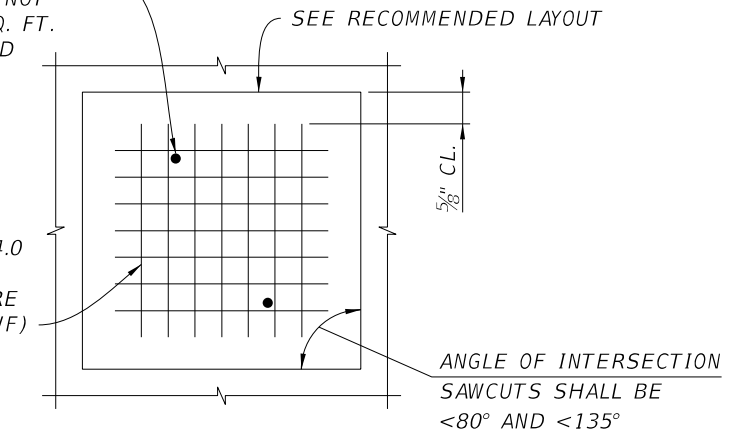
1. SAWCUT ALONG THE PERIMETER OF CONCRETE TO BE RESTORED. SEE RECOMMENDED LAYOUT. REMOVE ALL UNSOUND CONCRETE. EXPOSE REINFORCING STEEL WITH ENOUGH CLEARANCE BEHIND THE BAR TO PROVIDE FULL ENCASEMENT AND BOND WITH THE NEW CONCRETE REPAIR MATERIAL. PROVIDE 1" CLEARANCE BETWEEN EXPOSED REINFORCING AND SURROUNDING CONCRETE. SUPPLEMENT ANY EXISTING REINFORCING STEEL FOUND TO HAVE 25% OR MORE LOSS OF AREA BY SPLICING A NEW BAR OF EQUAL SIZE OVER AFFECTED SECTION. SHOP DRAWINGS INDICATING BAR SIZES AND SPLICE LENGTHS SHALL BE SUBMITTED TO THE ENGINEER FOR APPROVAL FOR EXISTING REINFORCING STEEL MEETING THIS CONDITION. FEATHERED EDGES ARE NOT ALLOWED.
2. KEEP REPAIR CONFIGURATION AS SIMPLE AS POSSIBLE, PREFERABLY WITH SQUARED CORNERS AS SHOWN IN RECOMMENDED LAYOUT.
3. AVOID DAMAGING EXISTING REINFORCING STEEL, EMBEDDED ANCHORAGES OR BREAKING THE BOND BETWEEN THE STEEL AND SOUND CONCRETE.
4. WHEN UNSOUND MATERIAL HAS BEEN REMOVED BUT CORROSION ON THE EXISTING REINFORCING STEEL EXTENDS INTO THE SOUND CONCRETE, REMOVE CONCRETE TO 1" BEYOND THE END OF THE AREA OF CORROSION, WHERE THE BAR IS FREE OF CORROSION AND IS WELL BONDED TO SOLID CONCRETE.
5. REMOVE CONCRETE TO PROVIDE CLEARANCE AS DETAILED IN NOTE 1 IF NON-CORRODED REINFORCING STEEL IS EXPOSED DURING CONCRETE REMOVAL, AND THE BOND BETWEEN BAR AND CONCRETE IS BROKEN.
6. REPAIR ANY EXISTING REINFORCING STEEL DAMAGED WHILE REMOVING UNSOUND CONCRETE OR CLEANING REINFORCING STEEL AT NO EXTRA COST TO THE OWNER.
7. CLEAN ALL EXPOSED AND NEW REINFORCING STEEL SSPC-SP-10 (NEAR WHITE) PRIOR TO APPLICATION OF THE PATCH MATERIAL.
8. CLEAN THE AREA TO RECEIVE NEW PATCH MATERIAL AND REMOVE LOOSE PARTICLES, DIRT, TAR, OIL AND DUST.
9. INSTALL GALVANIZED WELDED WIRE FABRIC AND ANCHORS FOR DEPTH OF CONCRETE EXCEEDING 3".
10. REPAIR CONCRETE SPALL REPAIR AREAS USING POLYMER MODIFIED-PORTLAND-CEMENT MORTAR PER APL AND SUBMIT TO THE ENGINEER FOR APPROVAL. MATCH REPAIR MATERIAL COLOR TO SURROUNDING CONCRETE SURFACES.
11. STOP WORK IMMEDIATELY AND NOTIFY THE ENGINEER PRIOR TO PROCEEDING WITH THE WORK WHEN:
 - SUBSTRUCTURE REPAIR REQUIRES MORE THAN SIX (6) INCHES OF CONCRETE REMOVAL DEPTH.
 - REPAIR AREA EXTENDS MORE THAN TWELVE (12) INCHES IN ANY DIRECTION BEYOND THE REPAIR AREA INITIALLY IDENTIFIED.

RECOMMENDED LAYOUT



3/8" Ø ANCHOR (TYP.) MINIMUM 2 PER REPAIR AREA BUT NOT LESS THAN 1 PER 2 SQ. FT. OF GALVANIZED WELDED WIRE FABRIC

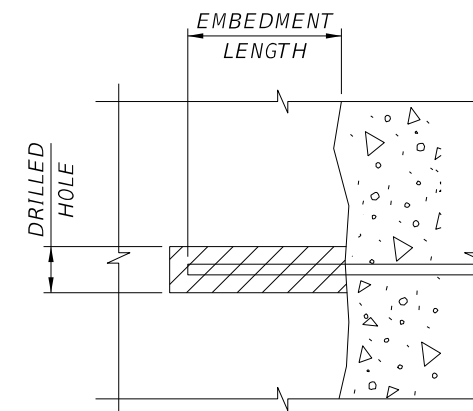
4x4-W4.0xW4.0 GLAVANIZED WELDED WIRE FABRIC (GWWF)



GALVANIZED WELDED WIRE FABRIC (GWWF) DETAIL

SPECIAL NOTES FOR GALVANIZED WELDED WIRE FABRIC

1. FIELD BEND GWWF TO CONFORM WITH ANY CHANGES IN THE CONCRETE SURFACE CONFIGURATION.
2. TIE EACH EXPANSION ANCHOR BOLT TO THE WELDED WIRE FABRIC WITH GALVANIZED WIRE.
3. SUBMIT ANCHOR BOLTS DATA CATALOG AND GWWF INSTALLATION TO THE ENGINEER FOR APPROVAL PRIOR TO PLACEMENT OF REPAIR MORTAR.



DOWEL OR ANCHOR DETAIL

DOWEL OR ANCHOR NOTES

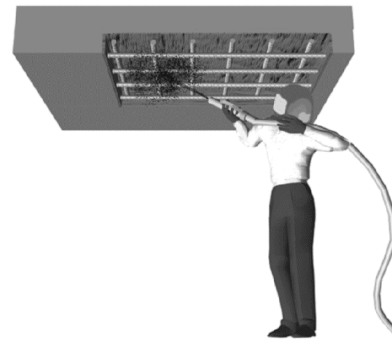
1. USE DOWELS WHERE SPLICING MAY RESULT IN THE REMOVAL OF EXCESS SOUND CONCRETE.
2. BEFORE INSTALLATION, LOCATE ALL EXISTING BARS NEXT TO PROPOSED HOLES. PREVENT ANY DAMAGE TO EXISTING REINFORCEMENT.
3. PROVIDE EXPANSION ANCHORS OR A HV ADHESIVE ANCHOR SYSTEM PER SPECIFICATION SECTION 937. INSTALL PER MANUFACTURER'S RECOMMENDATIONS AND SPECIFICATIONS SECTION 416 FOR HOLE DIAMETER AND CLEANING TECHNIQUE. SHOP DRAWINGS INCLUDING BUT NOT LIMITED TO EMBEDMENT LENGTH, TOTAL BAR LENGTH, BAR SIZE, HOLE DIAMETER AND ADHESIVE DATA CATALOG SHALL BE SUBMITTED TO THE ENGINEER FOR APPROVAL IF DOWELS OR ANCHORS ARE REQUIRED.
4. SUPPORT DOWELS OR ADHESIVE ANCHORS IN POSITION UNTIL EPOXY IS SET.

REVISIONS						CHARLOTTE COUNTY PUBLIC WORKS			SHEET TITLE:		REF. DWG. NO.
DATE	BY	DESCRIPTION	DATE	BY	DESCRIPTION	ROAD NO.	COUNTY	FINANCIAL PROJECT NO.	GENERAL CONCRETE SPALL REPAIR DETAILS		
						N/A	CHARLOTTE	N/A	CR-775 BRIDGE NO. 010062 OVER INGER CREEK		B1-9
<p>LEO E. RODRIGUEZ • FL P.E. LICENSE NUMBER: 78493 CENTRO CONSULTING GROUP, LLC • WESLEY CHAPEL, FL 33543 FL CERTIFICATE OF AUTHORIZATION: 36351 (435) 932-5627 • LEO@CENTROCONSULTINGGROUP.COM</p>								PROJECT NAME:		SHEET NO.	

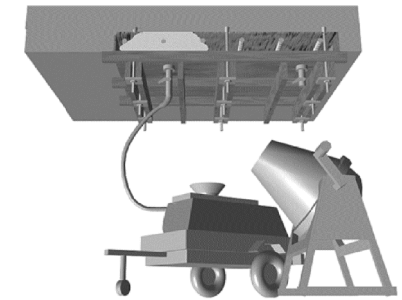
THE OFFICIAL RECORD OF THIS SHEET IS THE ELECTRONIC FILE DIGITALLY SIGNED AND SEALED UNDER RULE 61G15-23.004, F.A.C. MADE BY: LER REVIEWED BY: ES

VERTICAL OVERHEAD SPALL REPAIR

1. SEE "GENERAL SPALL CONCRETE SPALL REPAIR" SHEET FOR SPALL REPAIR DETAIL 2 NOTES AND ADDITIONAL REQUIREMENTS.
2. SEE GENERAL NOTES FOR REQUIREMENTS ON PROTECTION OF WATER RESOURCES AND CHANNEL CLOSURE REQUIREMENTS.
3. THE CONTRACTOR WILL PERFORM THE SPALL REPAIRS IN AN OVERHEAD CONDITION. ENSURE THE CONTRACTOR, ITS EMPLOYEES AND ANY OTHER INDIVIDUALS INVOLVED IN THIS REPAIR ADHERES TO OSHA AND OTHER SAFETY REGULATIONS, CODES AND LAWS.
4. FOR SPALLS 1 AND 4, IT IS REQUIRED TO INSTALL THE GALVANIZED WELDED WIRE FABRIC.
5. INSTALL TYPE 1 EMBEDDED GALVANIC ANODES PER THE SPECIFICATIONS.
6. IT IS ANTICIPATED THAT AN ANCHORAGE SYSTEM WILL BE NEEDED TO SUPPORT THE FORMWORK SYSTEM. ALL OF THE FORMWORK ANCHORAGE SYSTEM COMPONENTS THAT WILL BE LEFT IN PLACE SHALL BE STAINLESS STEEL TYPE 316. CONTRACTOR IS RESPONSIBLE FOR THE DESIGN OF THIS FORMWORK SYSTEM. IT IS RECOMMENDED TO USE A TRANSPARENT SOFFIT FORMWORK THAT ALLOWS THE CONTRACTOR AND INSPECTOR TO VISUALLY CONFIRM THAT THE REPAIR MATERIAL HAS ENTIRELY FILLED THE REPAIR AREA.
7. A PUMPING SYSTEM IS ANTICIPATED TO BE USED TO FILL THE REPAIR AREAS. THE CONTRACTOR IS RESPONSIBLE FOR PROVIDING A PUMPING SYSTEM FOR THE REPAIRS. A 2" DIA. CORE IN THE SLAB TO CREATE BREEDERS IS ACCEPTABLE. PRIOR TO CORING, FIND REINFORCEMENT AND MARK REINFORCEMENT. CARE NOT TO DAMAGE THE REINFORCEMENT DURING THE CORING.



CLEAN REINFORCING STEEL AND CONCRETE

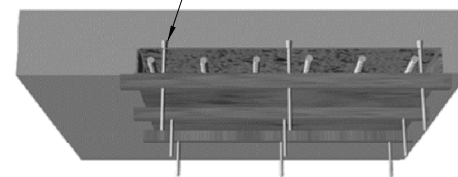


REPAIR MATERIAL PUMPING
(A MIXER IS SHOWN. CONTRACTOR TO SELECT MIXING AND PUMPING METHOD)

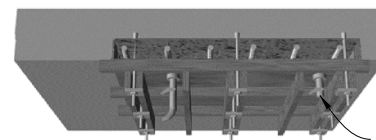


TYPE 1 EMBEDDED GALVANIC ANODE INSTALLATION

ANY EMBEDDED AND LEFT IN PLACE ANCHORAGE SYSTEM SHALL BE STAINLESS STEEL 316



FORMWORK INSTALLATION



PUMPING PORTS TO BE INSTALLED PER CONTRACTOR'S PUMPING PLAN

FORMWORK & PUMPING PORTS INSTALLATION

REVISIONS			DATE			DESCRIPTION			SHEET TITLE:			REF. DWG. NO.
DATE	BY	DESCRIPTION	DATE	BY	DESCRIPTION	ROAD NO.	COUNTY	FINANCIAL PROJECT NO	PROJECT NAME:			SHEET NO.
						N/A	CHARLOTTE	N/A	CR-775 BRIDGE NO. 010062 OVER AINGER CREEK			B1-10



LEO E. RODRIGUEZ • FL P.E. LICENSE NUMBER: 78493
CENTRO CONSULTING GROUP, LLC • WESLEY CHAPEL, FL 33543
FL CERTIFICATE OF AUTHORIZATION: 36351
(435) 932-5627 • LEO@CENTROCONSULTINGGROUP.COM

CHARLOTTE COUNTY PUBLIC WORKS

SHEET TITLE:

GENERAL CONCRETE SPALL REPAIR DETAILS

REF. DWG. NO.

ROAD NO. COUNTY FINANCIAL PROJECT NO

PROJECT NAME:

CR-775 BRIDGE NO. 010062 OVER AINGER CREEK

SHEET NO.

B1-10



SPALL AREA LOCATED ON ON THE WEST SIDE OF SPAN 2. REPAIR SPALL PER SPALL REPAIR DETAIL 2 AND ADDITIONAL REQUIREMENTS

PHOTO 1 - SPAN 2 WEST SPALL



AREA OUTSIDE OF THE CURRENT VISIBLE SPALL THAT IS HOLLOW AND WILL BE REPAIRED.

PHOTO 2 - SPAN 2 WEST SPALL

CONTINUOUS SPALL AREA LOCATED ON ON THE EAST OF THE BRIDGE ALONG THE CONSTRUCTION JOINT. REPAIR SPALL PER SPALL REPAIR DETAIL 2 AND ADDITIONAL REQUIREMENTS



PHOTO 3 - EAST SPALL ALONG CONSTRUCTION JOINT



CONTINUOUS SPALL AREA LOCATED ON ON THE EAST OF THE BRIDGE ALONG THE CONSTRUCTION JOINT. REPAIR SPALL PER SPALL REPAIR DETAIL 2 AND ADDITIONAL REQUIREMENTS

PHOTO 4 - WEST SPALL ALONG CONSTRUCTION JOINT

REVISIONS					
DATE	BY	DESCRIPTION	DATE	BY	DESCRIPTION


 LEO E. RODRIGUEZ • FL P.E. LICENSE NUMBER: 78493
 CENTRO CONSULTING GROUP, LLC • WESLEY CHAPEL, FL 33543
 FL CERTIFICATE OF AUTHORIZATION: 36351
 (435) 932-5627 • LEO@CENTROCONSULTINGGROUP.COM

CHARLOTTE COUNTY PUBLIC WORKS		
ROAD NO.	COUNTY	FINANCIAL PROJECT NO.
N/A	CHARLOTTE	N/A

SHEET TITLE:	REPAIR LOCATION PHOTOGRAPHS (1)	REF. DWG. NO.
PROJECT NAME:	CR-775 BRIDGE NO. 010062 OVER AINGER CREEK	SHEET NO.
		B1-11



CLEAN AND SEAL CRACK (TYP.)

CLEAN AND SEAL CRACK (TYP.)

PHOTO 5 - SPAN 3 CRACKS



CLEAN AND SEAL EAST AND WEST CONSTRUCTION JOINTS ALONG THE ENTIRE LENGTH OF THE BRIDGE

PHOTO 6 - EAST CONSTRUCTION JOINT



CLEAN AND SEAL EAST AND WEST CONSTRUCTION JOINTS ALONG THE ENTIRE LENGTH OF THE BRIDGE

PHOTO 7 - EAST CONSTRUCTION JOINT

REVISIONS					
DATE	BY	DESCRIPTION	DATE	BY	DESCRIPTION



LEO E. RODRIGUEZ • FL P.E. LICENSE NUMBER: 78493
 CENTRO CONSULTING GROUP, LLC • WESLEY CHAPEL, FL 33543
 FL CERTIFICATE OF AUTHORIZATION: 36351
 (435) 932-5627 • LEO@CENTROCONSULTINGGROUP.COM

CHARLOTTE COUNTY PUBLIC WORKS			SHEET TITLE:	REPAIR LOCATION PHOTOGRAPHS (2)	REF. DWG. NO.
ROAD NO.	COUNTY	FINANCIAL PROJECT NO.	PROJECT NAME:	CR-775 BRIDGE NO. 010062 OVER AINGER CREEK	SHEET NO.
N/A	CHARLOTTE	N/A			B1-12