

Charlotte County Public Safety

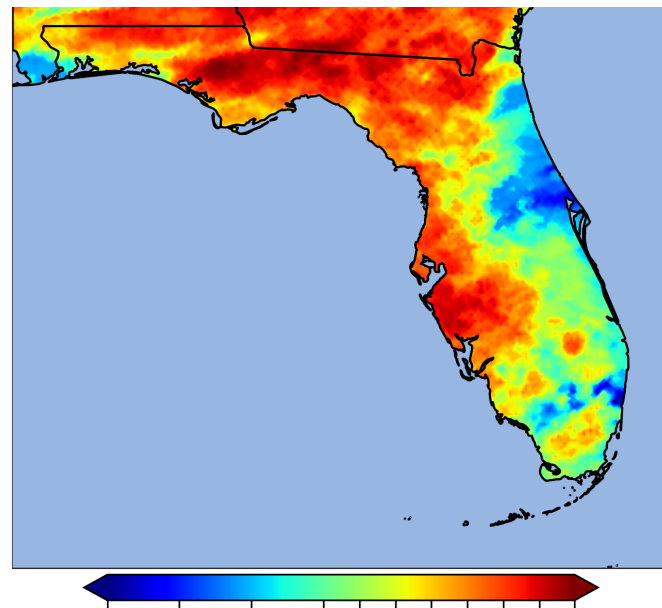
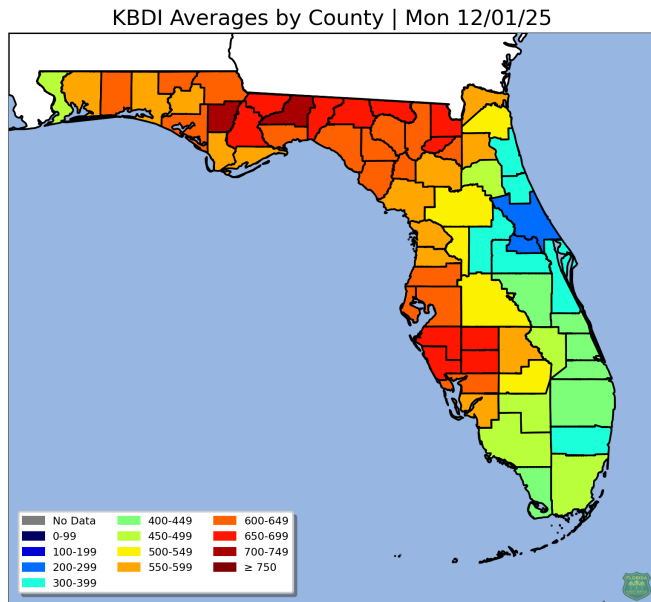
Request for Countywide Burn Ban
December 9, 2025



CHARLOTTE COUNTY
FLORIDA

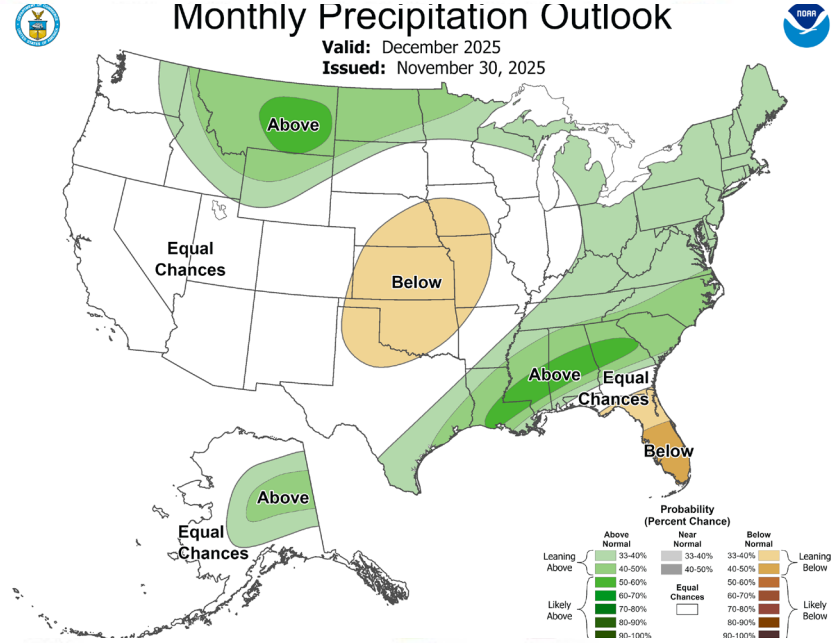
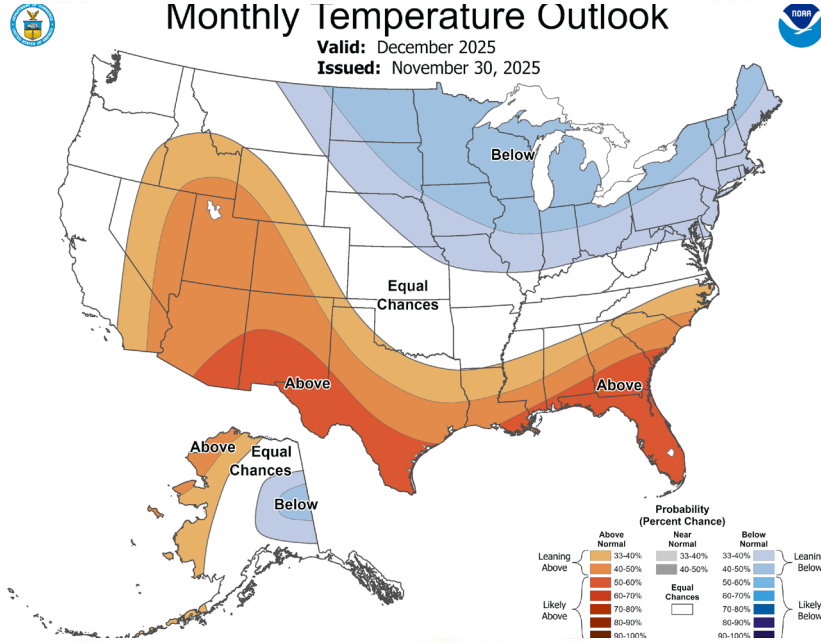
Statewide Keetch-Byram Drought Index (KBDI)

December 1, 2025 – Charlotte County 609



December Outlook

Issued November 30, 2025



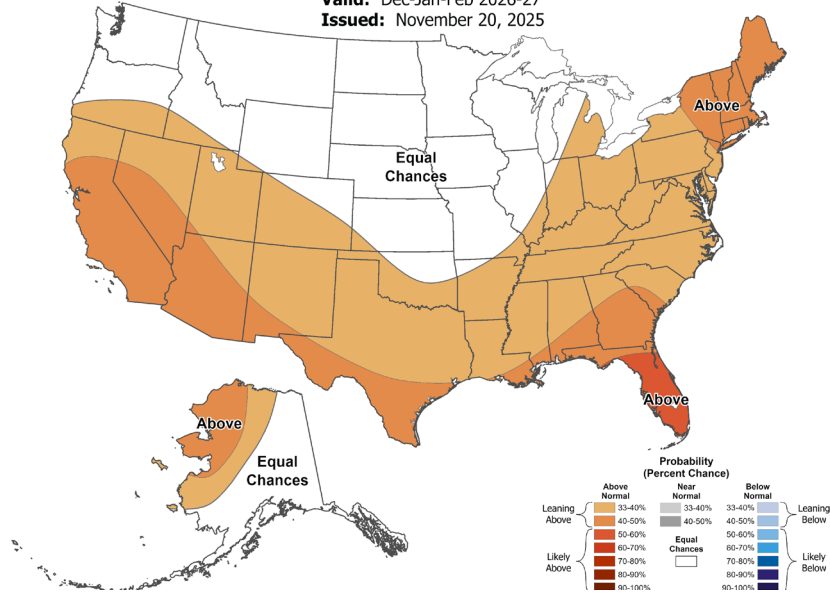
Seasonal Outlook

Issued November 20, 2025



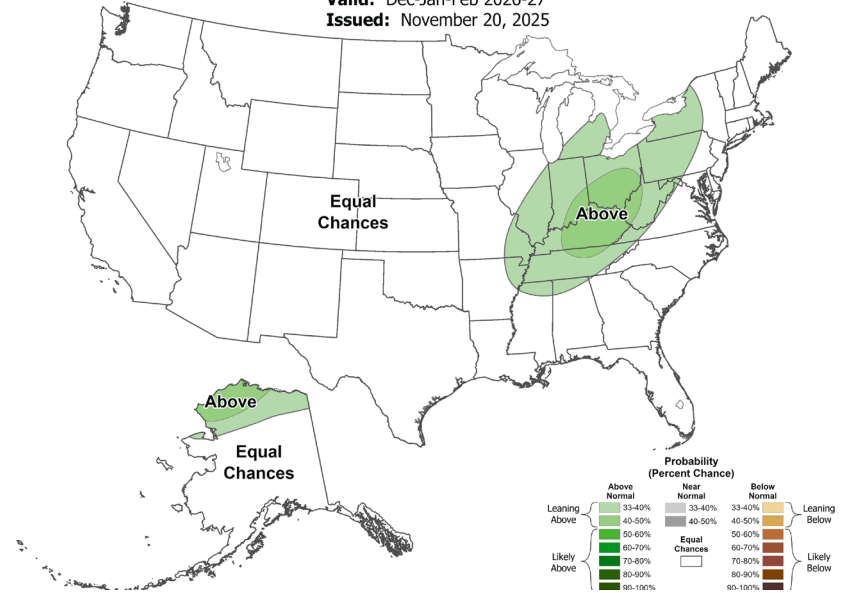
Seasonal Temperature Outlook

Valid: Dec-Jan-Feb 2026-27
Issued: November 20, 2025



Seasonal Precipitation Outlook

Valid: Dec-Jan-Feb 2026-27
Issued: November 20, 2025

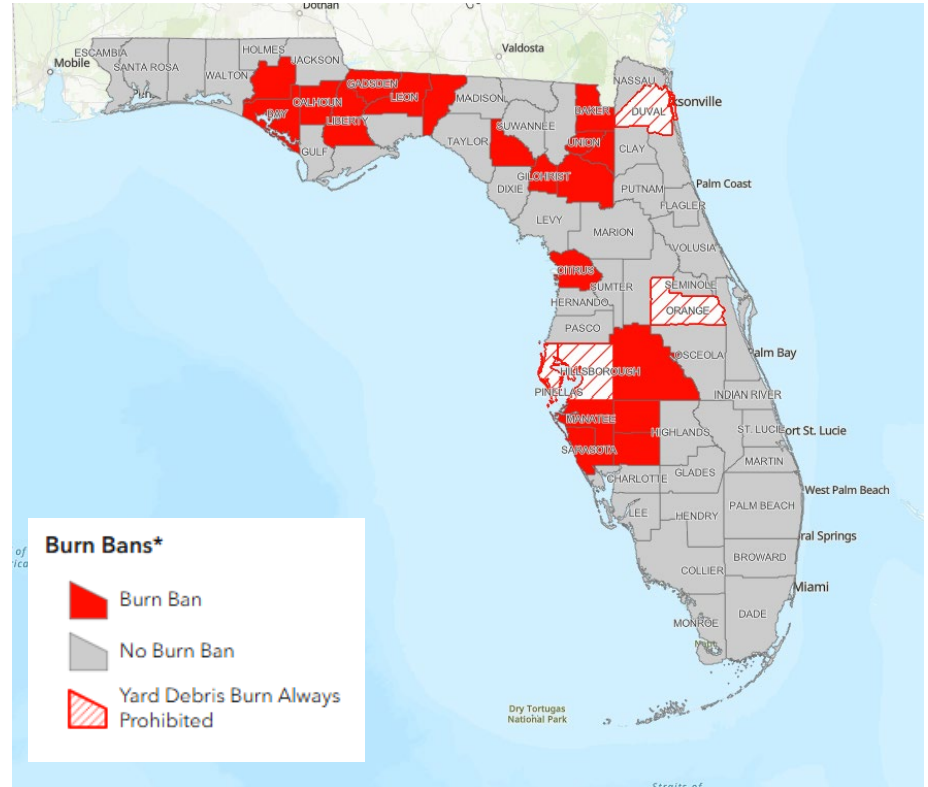


County Enacted Bans

as of December 1, 2025

Regional

- DeSoto County
- Hardee County
- Manatee County
- Sarasota County



Forecast/Outlook Impacts

Dry and windy conditions mean

- Fires ignite easily, burn hotter, and spread rapidly.
- Hurricane debris and increased vegetation provide additional fuel, intensifying fire behavior.
- Wildfires place a heavy demand on emergency services and increase risks to both life and property.

Risk to health and property

- Wildfire smoke poses serious health concerns, especially for individuals with respiratory conditions.
- According to FDOH, wildfires are the second-highest weather-related threat in Florida.
- Continued growth increases the likelihood of fires in wildland-urban interface areas.
- In 2024 wildfires caused an estimated more than \$250 billion nationwide (*Accuweather*)

