

**FY2026 Capital Improvements Budget / FY 2026 - FY 2031 Project Detail** Project No. **c361603**

<b>GENERAL PROJECT DATA:</b>		Status: In Progress	<b>CONCURRENCY REQUIREMENTS:</b>	
Project Title:	Ackerman Septic to Sewer and Water Expansion		Does project add new capacity?	Yes
Functional Area:	Utilities - Wastewater		Is project required to maintain level of service:	Yes
Department:	Utilities - Engineering		- Within 5 years? List project in CIE	No
Location:	Mid County		- From 6 to 10 years? Monitor Annually	No

PROJECT NEED CRITERIA	PROJECT SCHEDULE	FY26				FY27				FY28				FY29				FY30				FY31			
		1	2	3	4	1	2	3	4	1	2	3	4	1	2	3	4	1	2	3	4	1	2	3	4
Safety	X																								
Mandate																									
Replace																									
Growth	X																								

**PROJECT DESCRIPTION:**  
 As a portion of the Charlotte Harbor Water Quality Initiative Phase II, this project will provide central wastewater service to the area south of Edgewater Drive within the drainage basin of Ackerman and Countryman Waterways and extend water service concurrently with wastewater service where water mains are currently not existant in accordance with the Smart Charlotte 2050 plan goals.

This capital project includes CCU funded infrastructure improvements consistent with CCU policies. Improvements include a new master vacuum pump station, a new 12" wastewater force main, new reclaimed water main, replacement of existing water mains to meet fire demand, that are asbestos cement, or that have reached their useful life and streets and drainage improvements.

Estimated ERC: 1,760

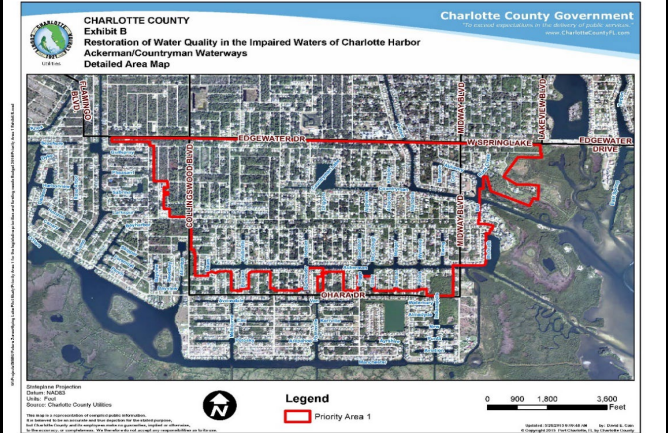
**PROJECT RATIONALE (Include Additional LOS Detail, if necessary):**

Part of the Specific Conditions of the FDEP permit and Net Ecosystem Benefits of the USACOE permit to remove the Manchester Lock was to commence and complete a phased sewer expansion in the Little Alligator drainage basin commencing with the area between East and West Spring Lake.

**OPERATING BUDGET IMPACT:**  
 Increase in staffing is a minimum of two full-time operations employees for the vaccuum station.

This CIP is the second component to address the FDEP and USACOE directives.

	Prior Actual	Est FY25	Calc. for FY26			FY26	FY27	FY28	FY29	FY30	FY31	FUTURE	Total
			(1) Orig. FY26	(2) Est c/o to FY26	(3) New \$ FY26								
Design/Arch/Eng	2,494	16		196	196								2,706
Land (or ROW)	32												32
Construction	18,347	1,377		42,477	42,477								62,202
Internal Costs	1,215	61		483	483								1,759
Equipment													
Interest	91	21	84		84	142	135	127	120	112	779		1,610
Other Fees & Costs	21			2,281	2,281								2,301
<b>Total Project Cost</b>	<b>22,199</b>	<b>1,475</b>	<b>84</b>	<b>45,438</b>	<b>45,521</b>	<b>142</b>	<b>135</b>	<b>127</b>	<b>120</b>	<b>112</b>	<b>779</b>		<b>70,610</b>
Utility Operations & Maint				63	63								63
State Revolving Fund	10,779	814		24,828	23,761								35,354
Conn. Fee -Wastewater													
Utility Repair & Replace Fund	4,903			11,546	12,614								17,518
MSBU Assessments	5,516	661	84	3,522	-2,000	1,606	142	135	127	120	112	779	9,197
Grants	1,000			5,200	2,000	7,200							8,200
Debt Proceeds													
Conn. Fee -Water				278	278								278
<b>TOTAL FUNDING</b>	<b>22,199</b>	<b>1,475</b>	<b>84</b>	<b>45,438</b>	<b>45,521</b>	<b>142</b>	<b>135</b>	<b>127</b>	<b>120</b>	<b>112</b>	<b>779</b>		<b>70,610</b>
<b>LOAN REPAYMENT SCHEDULE (000'S)</b>													
MSBU Assessments													
Base Rate - Sewer													
Utility Operations & Maint													
<b>TOTAL LOAN REPAYMENT</b>													
<b>OPERATING BUDGET IMPACT (000'S)</b>													
Personal Svc.													
Non-personal													
Capital													
<b>Total Operating</b>													



**SRF Loans**

- \$1,901,981 WW8024-0 Design
- \$11,154,722 WW0802H-0 Zones 1 & 2 Construction
- \$11,273,686 WW0802J-0 Zones 3 & 4 Construction

**Grants**

- \$1,000,000 FY22 LPA0151 Legislative Appropriation (FDEP)
- \$2,000,000 FY23 LPA0261 Legislative Appropriation (FDEP)
- \$3,200,000 FY24 Pending Legislative Appropriation (Federal)
- \$1,018,560 Presumed future connection grants