

# CSZ-25-02 (Quasi-Judicial)

(Adoption Hearing BCC Land Use Meeting 04-22-2025)

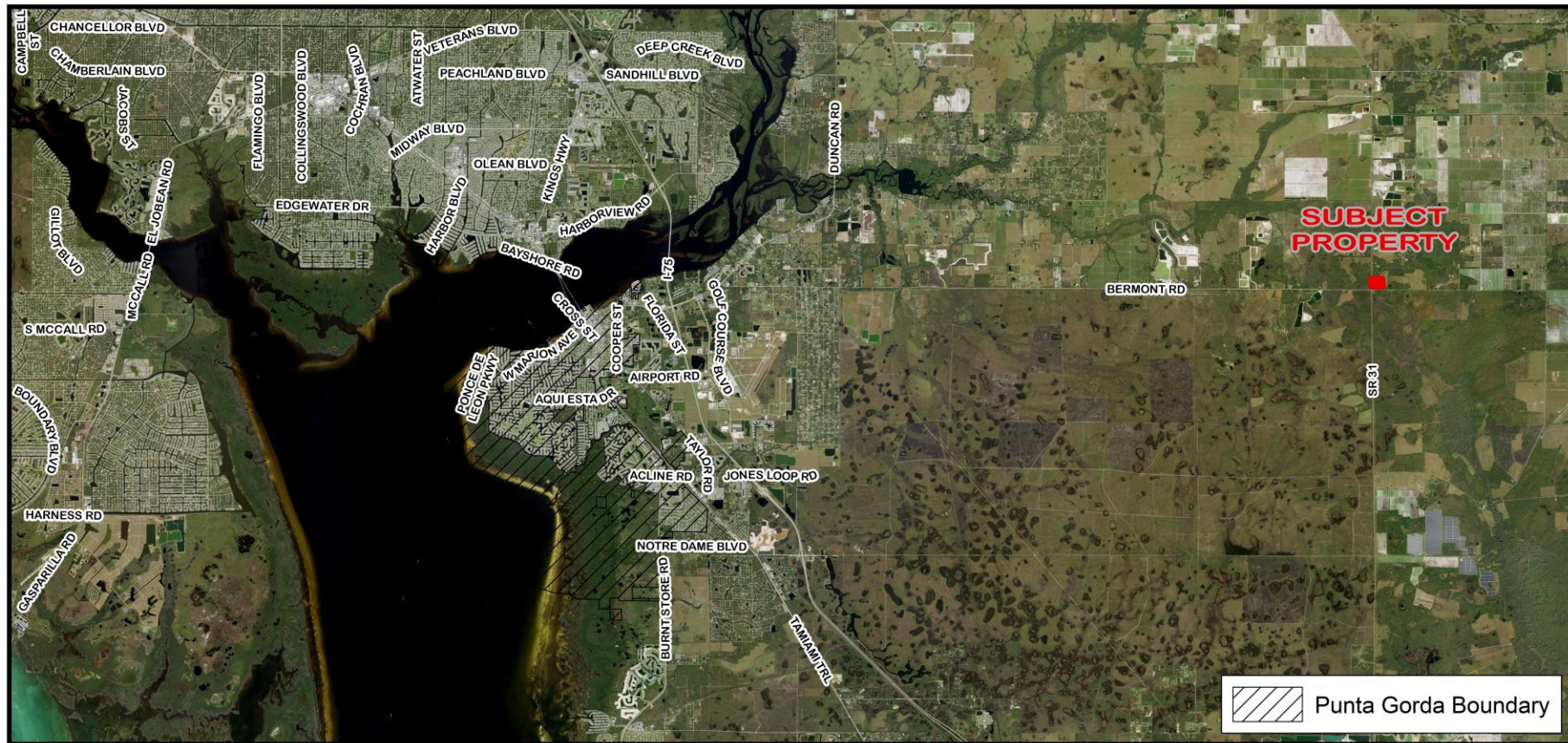
Sajida Y. Khudairi



CHARLOTTE COUNTY  
FLORIDA

# Request

- To certificate Sending Zones (SZs), including 319 platted lots in Blocks 86, 87, 88, 89, 90, 111, 112, 113, 114, & 115 and within the Dixie Estates Section C subdivision, generally located north of Bermont Road and east of SR 31, in the East County area, containing 19.60± acres; for calculation and severance of 319 density units
- The property is located in Commission District I.

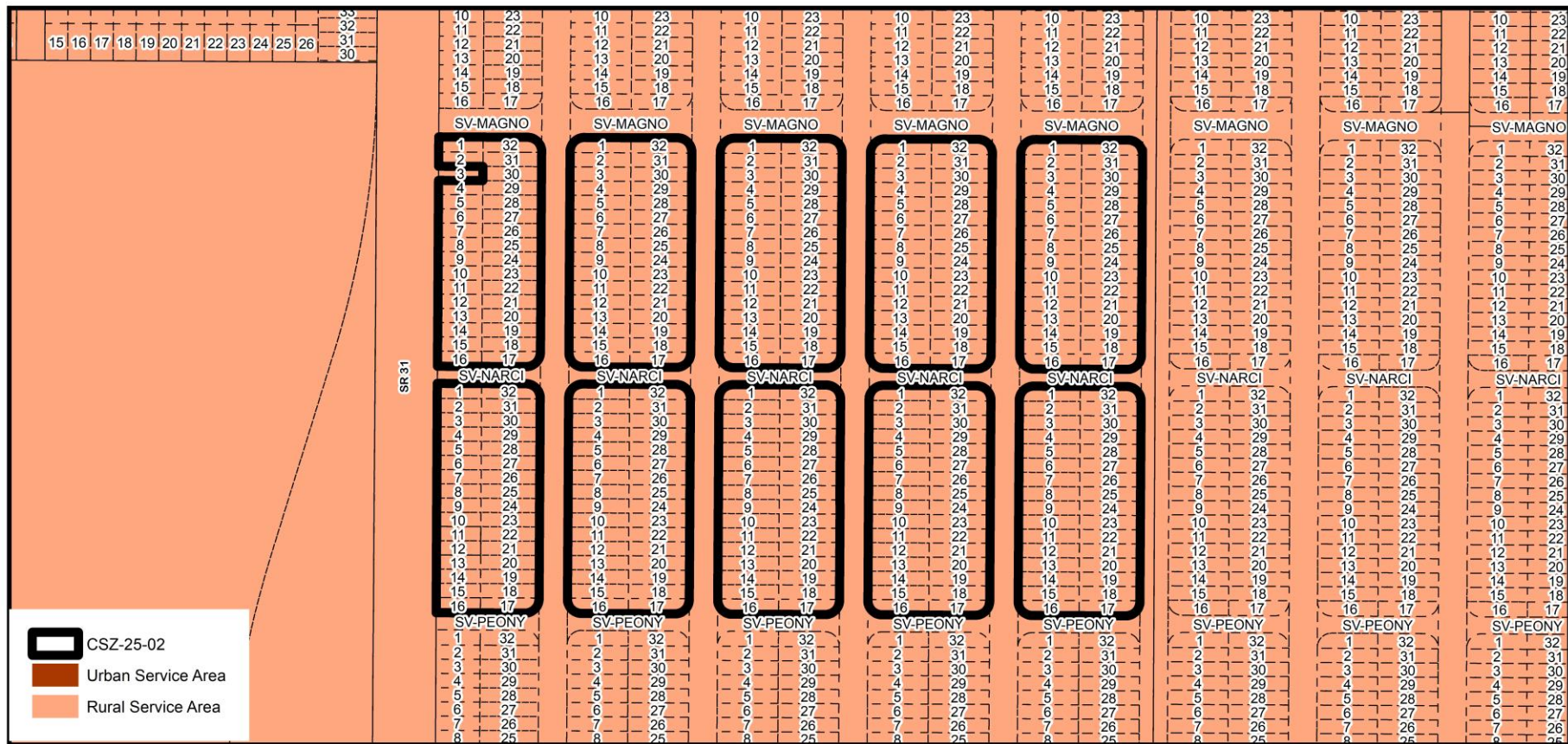






CSZ-25-02 Area Image





## CSZ-25-02 Service Area Delineation

