

CHARLOTTE COUNTY

Location Map for DRC-26-011



21/42/23 East County



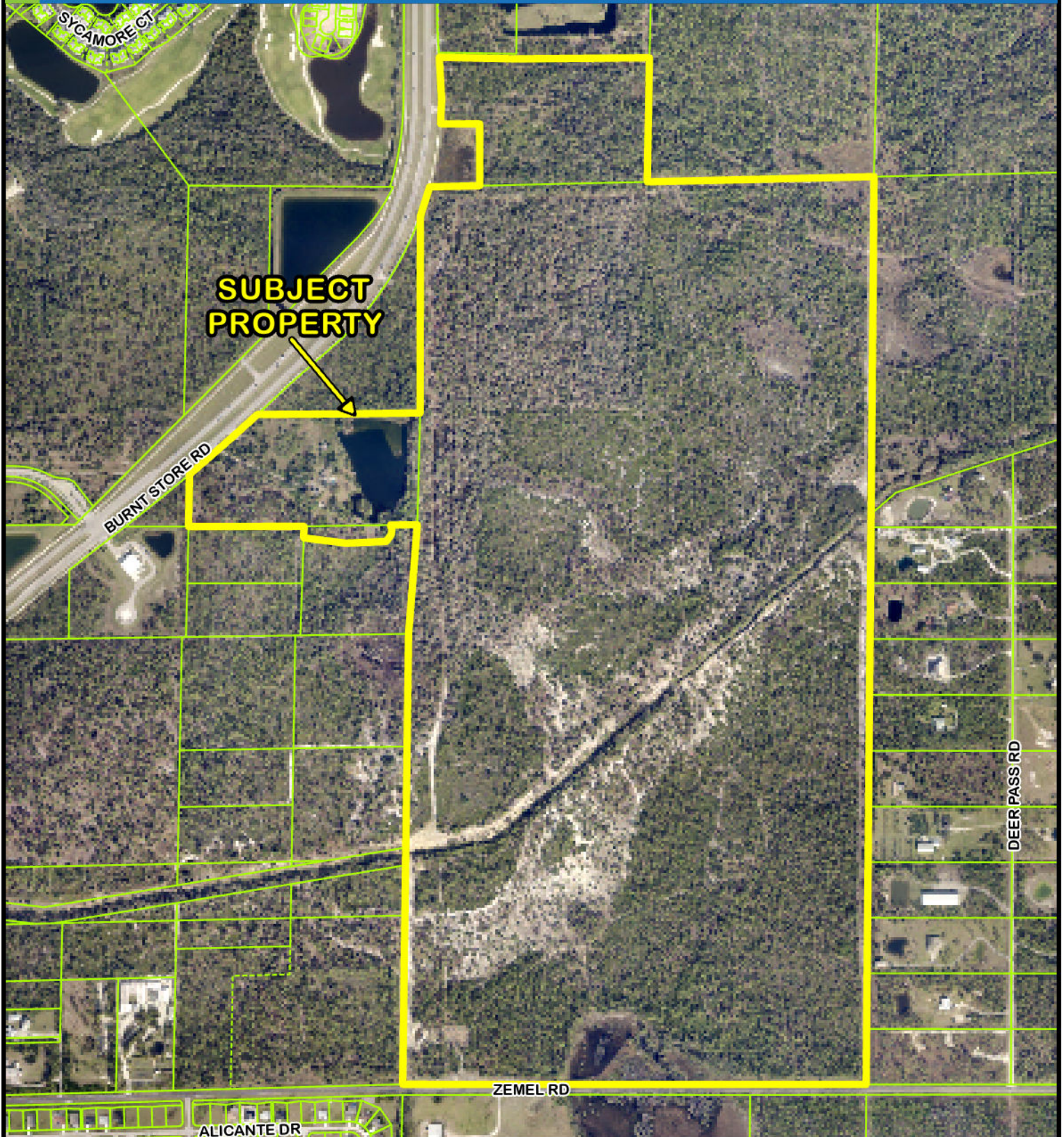
This map is a representation of compiled public information. It is believed to be an accurate and true depiction for the stated purpose, but Charlotte County and its employees make no guarantees, implied or otherwise, to the accuracy, or completeness. We therefore do not accept any responsibilities as to its use. This is not a survey or is it to be used for design. Reflected Dimensions are for informational purposes only and may have been rounded to the nearest tenth. For precise dimensions, please refer to recorded plats and related documents.

© Copyright 2026 Port Charlotte, FL by Charlotte County
Date Saved: 3/25/2026 5:34 PM TPrince-34282

M:\Departments\GIS\Projects\Petition_Maps\Current_Planning\2026\DRC\DRC-26-011\DRC_26_011.aprx

CHARLOTTE COUNTY

Site Image for DRC-26-011



21/42/23 East County



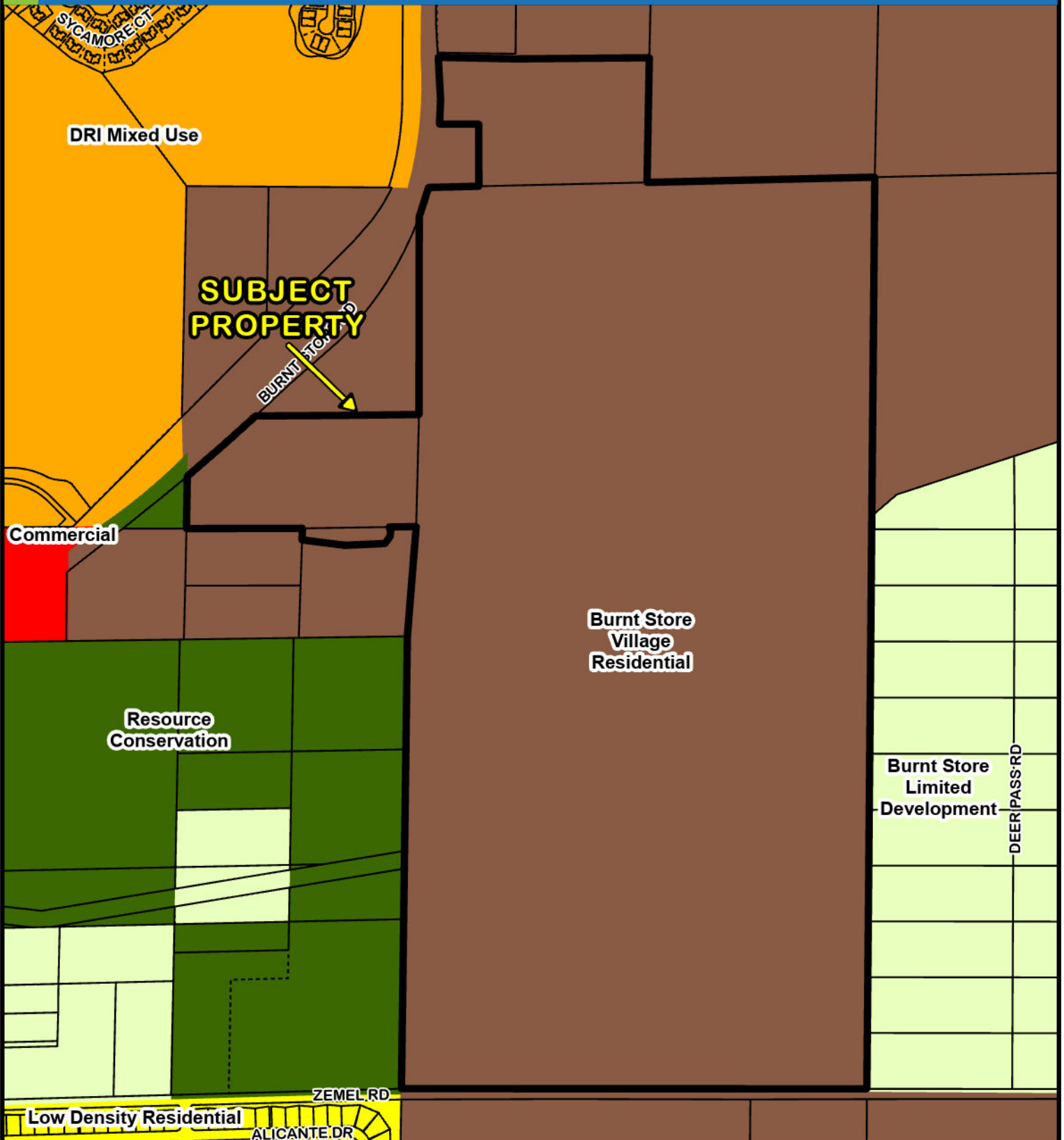
This map is a representation of compiled public information. It is believed to be an accurate and true depiction for the stated purpose, but Charlotte County and its employees make no guarantees, implied or otherwise, to the accuracy, or completeness. We therefore do not accept any responsibilities as to its use. This is not a survey or is it to be used for design. Reflected Dimensions are for informational purposes only and may have been rounded to the nearest tenth. For precise dimensions, please refer to recorded plats and related documents.

© Copyright 2026 Port Charlotte, FL by Charlotte County
Date Saved: 3/25/2026 6:11 PM TPrince-34282

M:\Departments\GIS\Projects\Petition_Maps\Current_Planning\2026\DRC\DRC-26-011\DRC_26_011.aprx

CHARLOTTE COUNTY

FLUM Designations for DRC-26-011



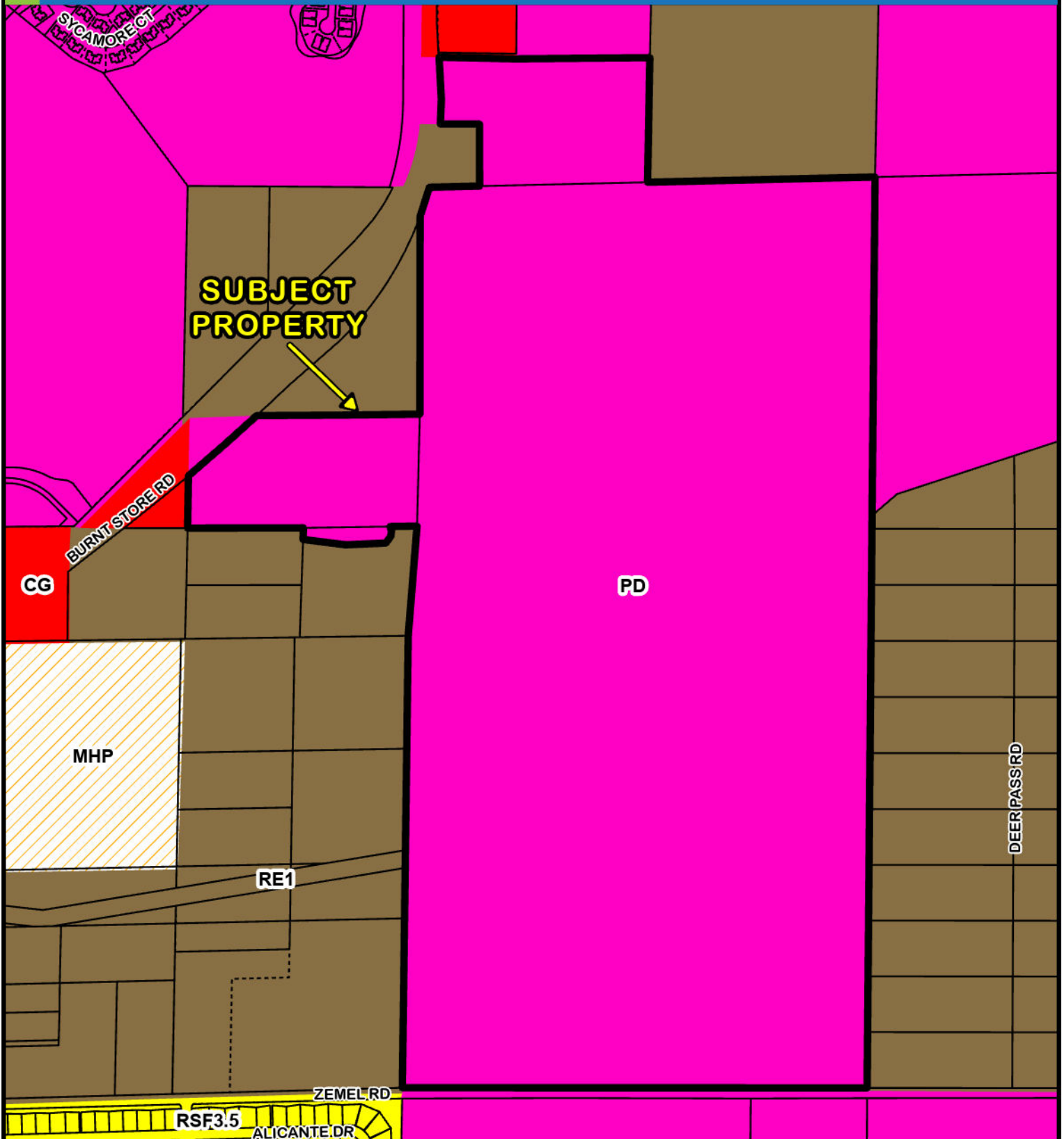
21/42/23 East County



This map is a representation of compiled public information. It is believed to be an accurate and true depiction for the stated purpose, but Charlotte County and its employees make no guarantees, implied or otherwise, to the accuracy, or completeness. We therefore do not accept any responsibilities as to its use. This is not a survey or is it to be used for design. Reflected Dimensions are for informational purposes only and may have been rounded to the nearest tenth. For precise dimensions, please refer to recorded plats and related documents.

CHARLOTTE COUNTY

Zoning Designations for DRC-26-011



21/42/23 East County



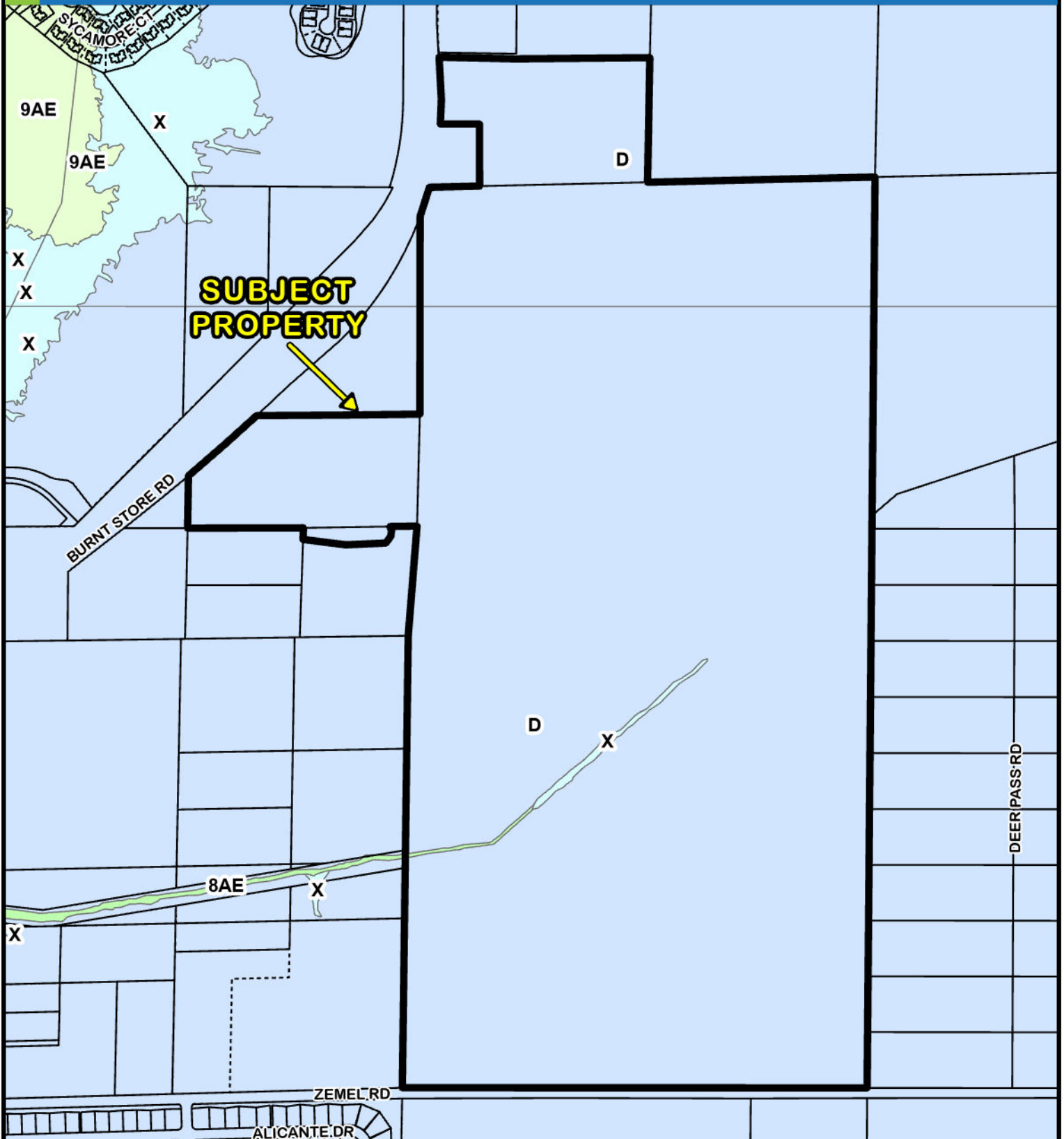
This map is a representation of compiled public information. It is believed to be an accurate and true depiction for the stated purpose, but Charlotte County and its employees make no guarantees, implied or otherwise, to the accuracy, or completeness. We therefore do not accept any responsibilities as to its use. This is not a survey or is it to be used for design. Reflected Dimensions are for informational purposes only and may have been rounded to the nearest tenth. For precise dimensions, please refer to recorded plats and related documents.

© Copyright 2026 Port Charlotte, FL by Charlotte County
Date Saved: 3/25/2026 6:11 PM TPrince-34282

M:\Departments\GIS\Projects\Petition_Maps\Current_Planning\2026\DRC\DRC-26-011\DRC_26_011.aprx

CHARLOTTE COUNTY

Flood Designations for DRC-26-011



21/42/23 East County



This map is a representation of compiled public information. It is believed to be an accurate and true depiction for the stated purpose, but Charlotte County and its employees make no guarantees, implied or otherwise, to the accuracy, or completeness. We therefore do not accept any responsibilities as to its use. This is not a survey or is it to be used for design. Reflected Dimensions are for informational purposes only and may have been rounded to the nearest tenth. For precise dimensions, please refer to recorded plats and related documents.

© Copyright 2026 Port Charlotte, FL by Charlotte County
Date Saved: 3/25/2026 6:11 PM TPrince-34282

M:\Departments\GIS\Projects\Petition_Maps\Current_Planning\2026\DR\DR-26-011\DR-26_011.aprx