

A large, stylized logo in the background featuring a yellow sun with rays, a green leaf, and a blue wavy line representing water.

SV-25-01 (Legislative)

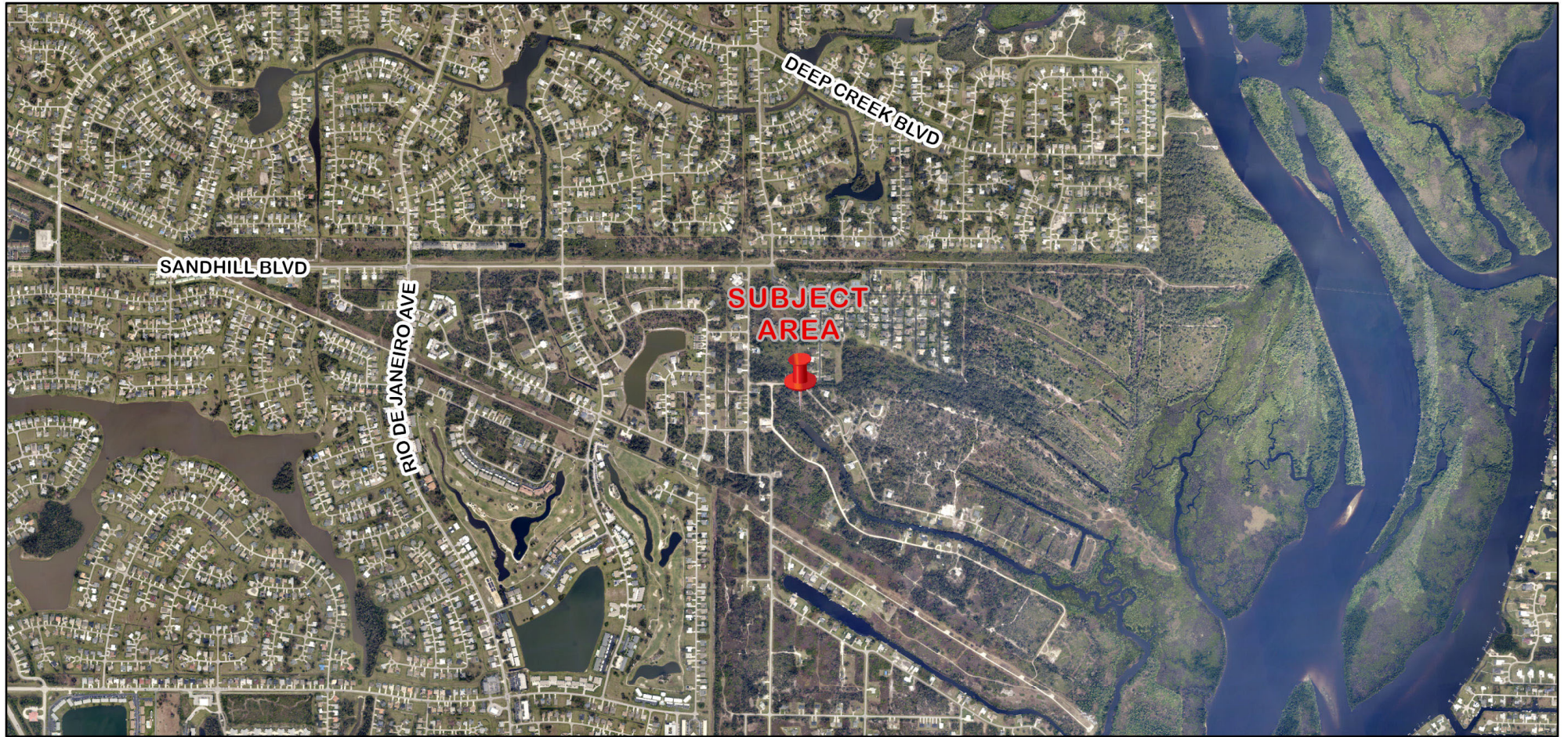
(Adoption Hearing BCC Land Use Meeting 04-22-2025)



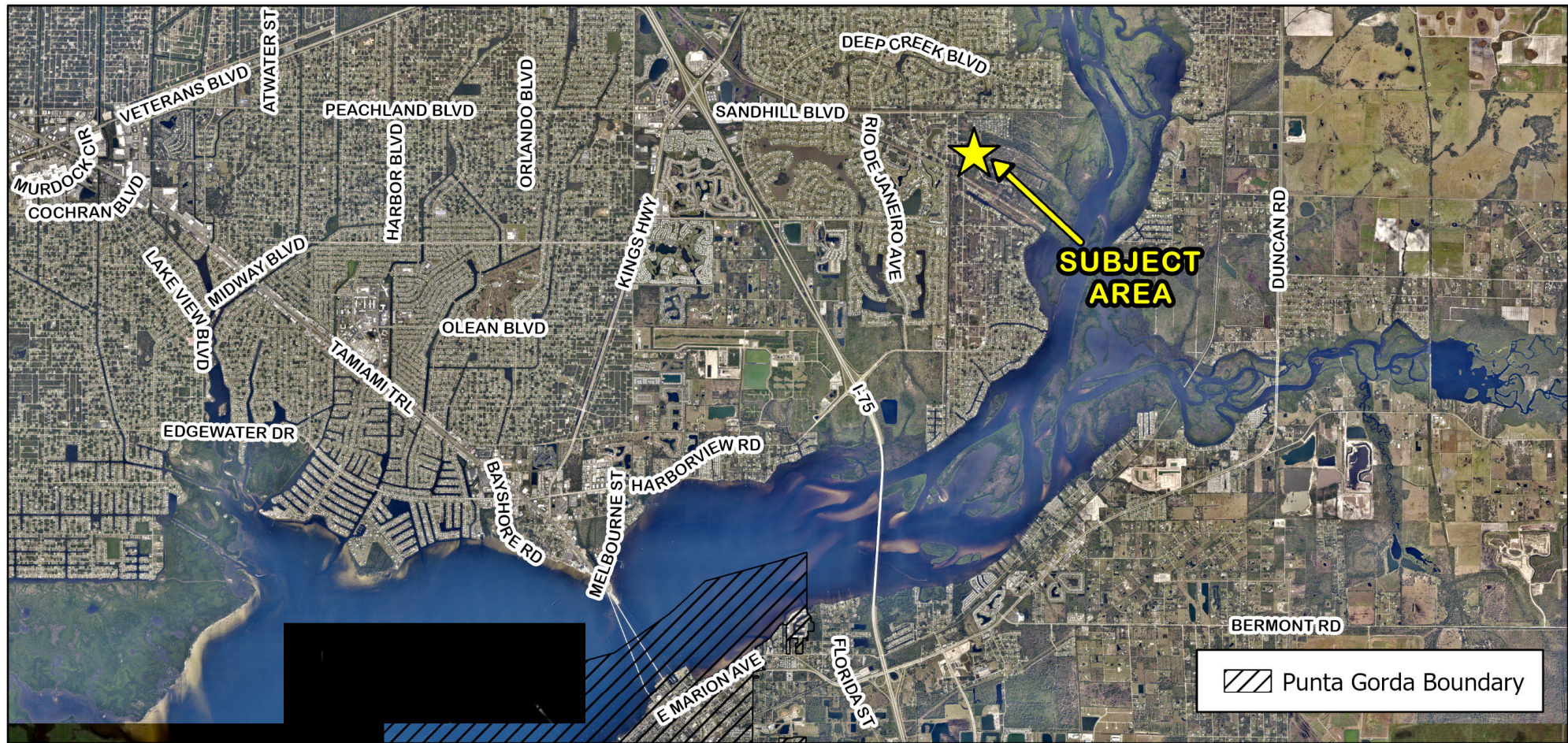
CHARLOTTE COUNTY
FLORIDA

SV-25-01

- The applicant is requesting to vacate a portion of the undeveloped San Carlos canal basin behind their property located at lots 60 through 64, Block 191, of Harbour Heights Section Eleven Part Two, as shown on Plat Book 4, Pages 48A through 48G, of the Public Records of Charlotte County, Florida. The total area to be vacated contains 26,142.97± square feet and is generally located southwest of Neptide Drive and northeast of San Carlos Drive, and within the Mid-County area.
- Located in Commission District I



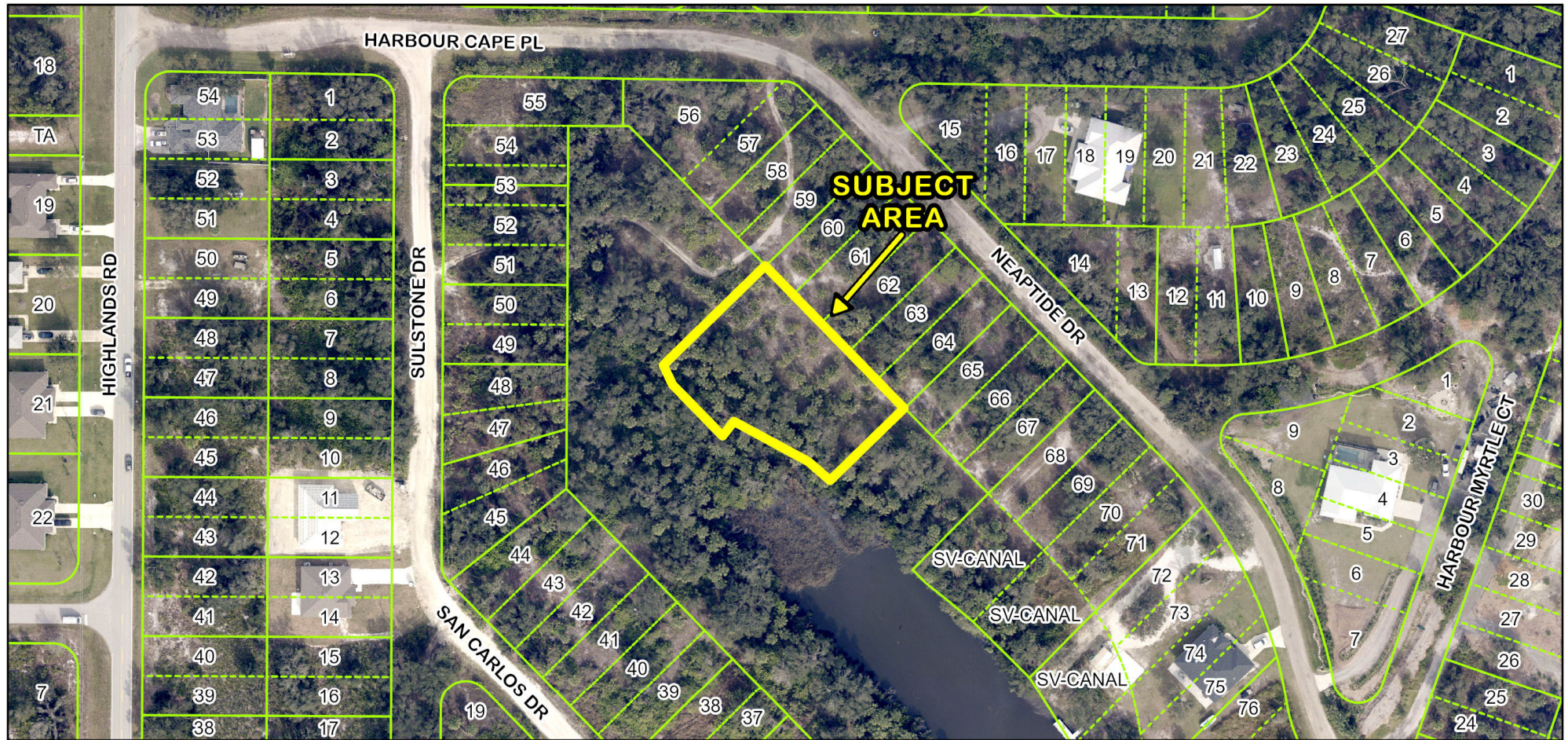
SV-25-01 Location Map



SV-25-01 2024 Aerial Location Map (Full Range)



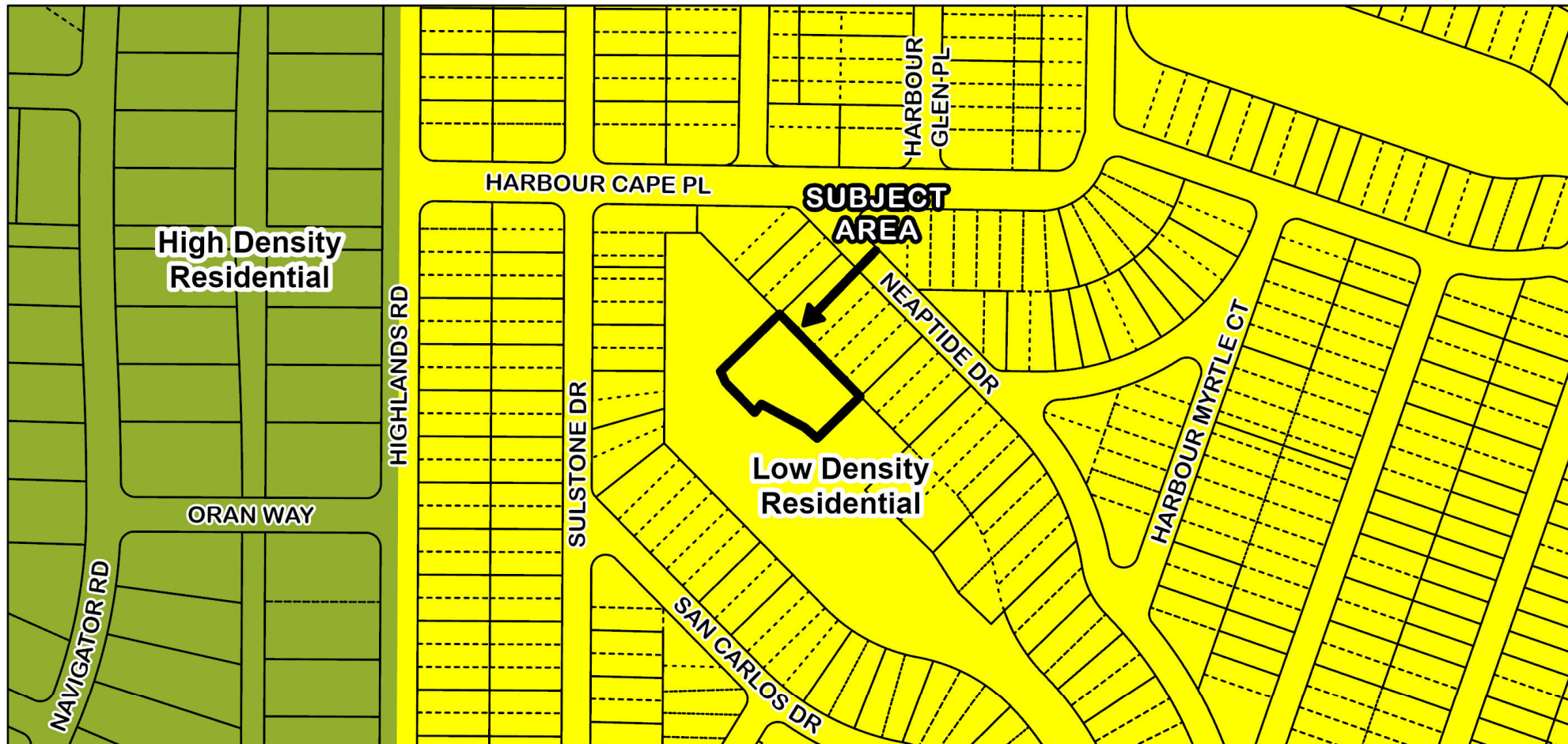
SV-25-01 2024 Aerial Location Map (Mid-Range)



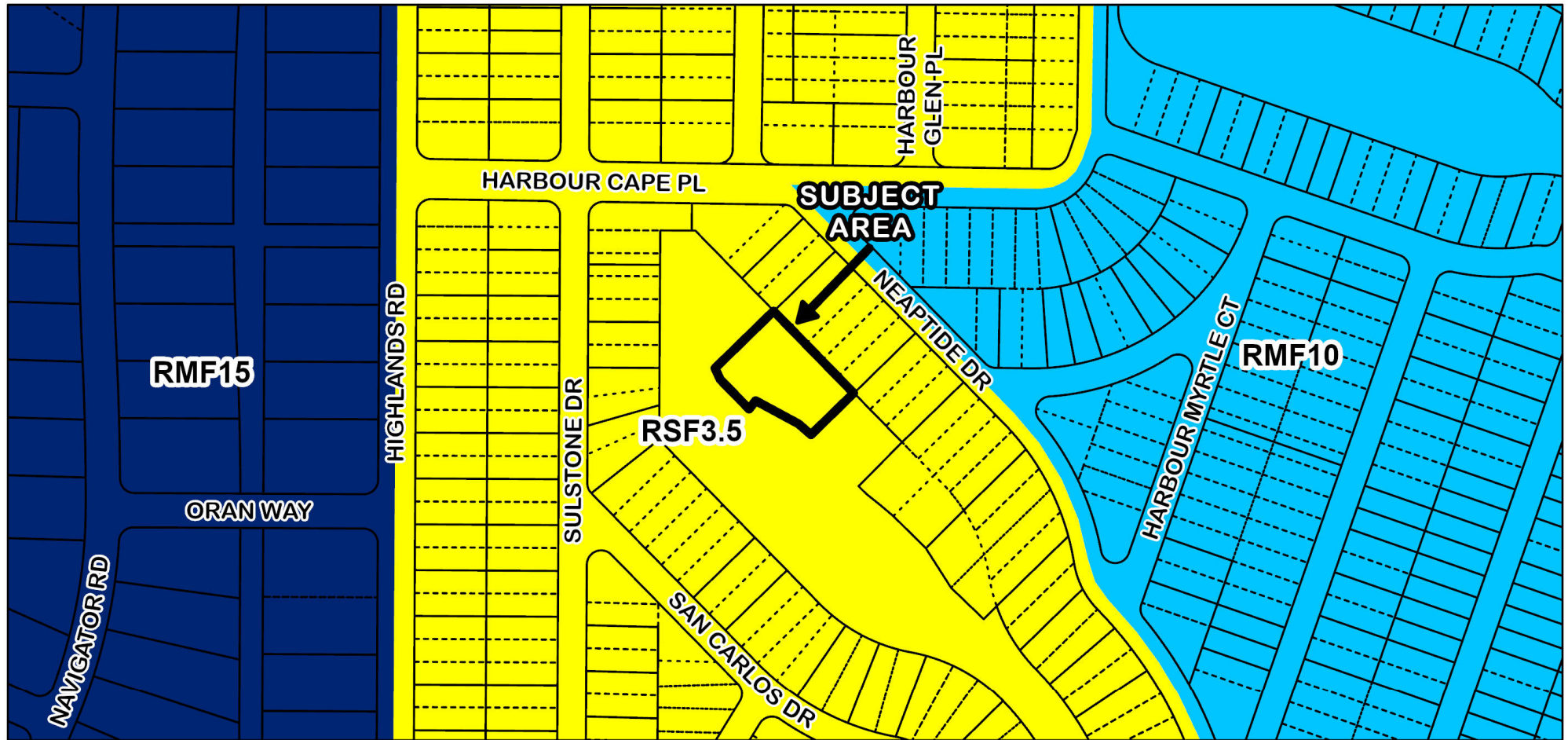
SV-25-01 Aerial Location Map



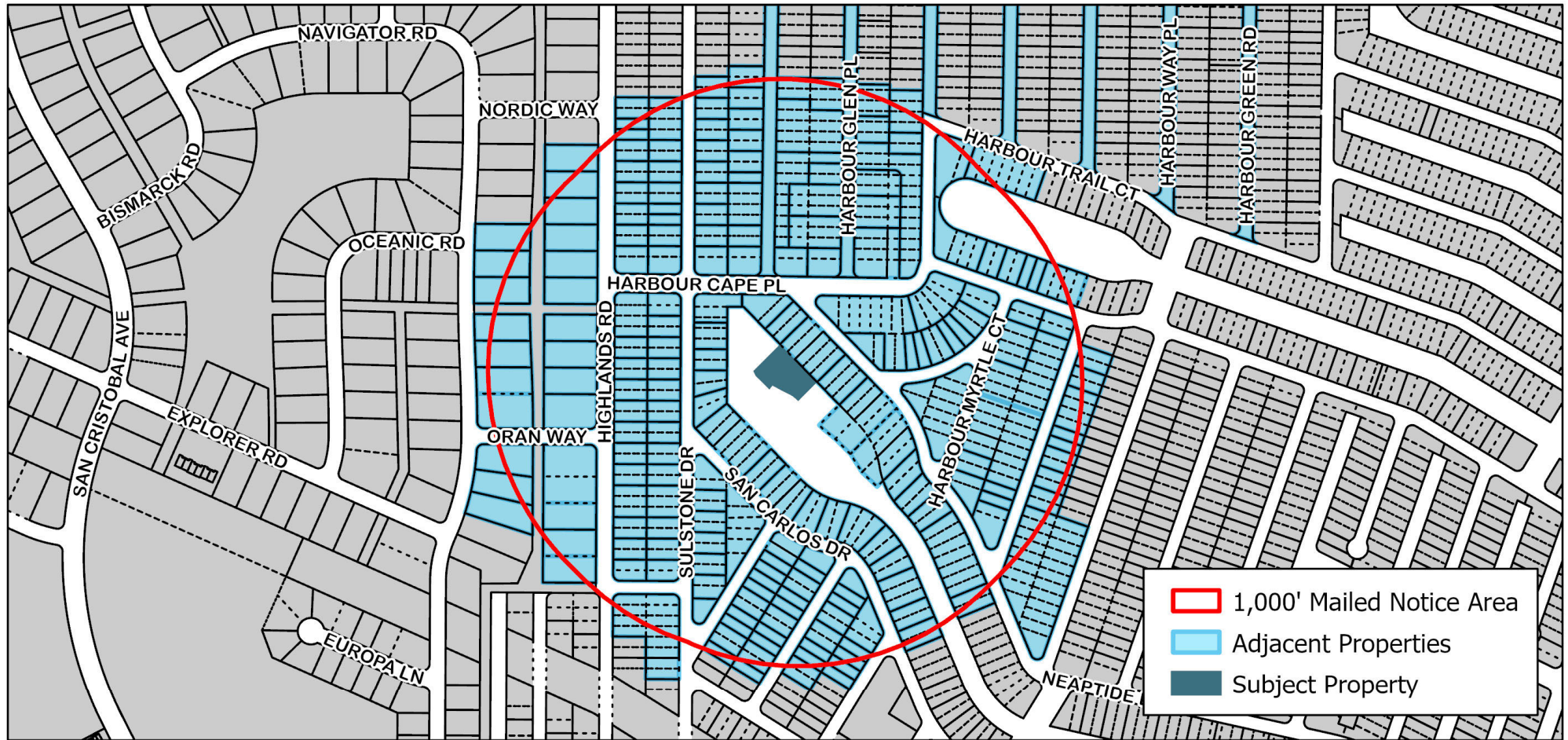
SV-25-01 2024 Eagle View Image



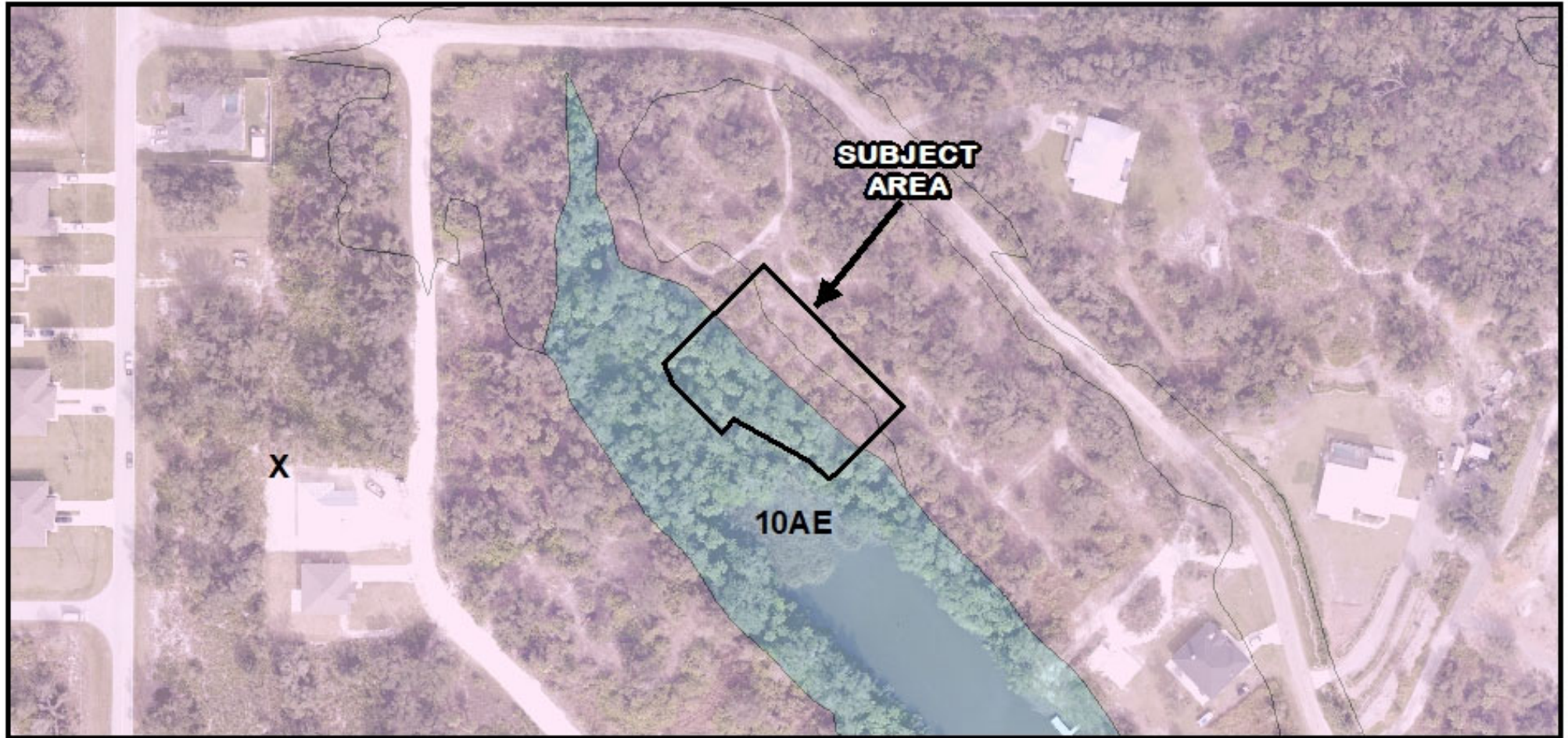
SV-25-01 FLUM Designations



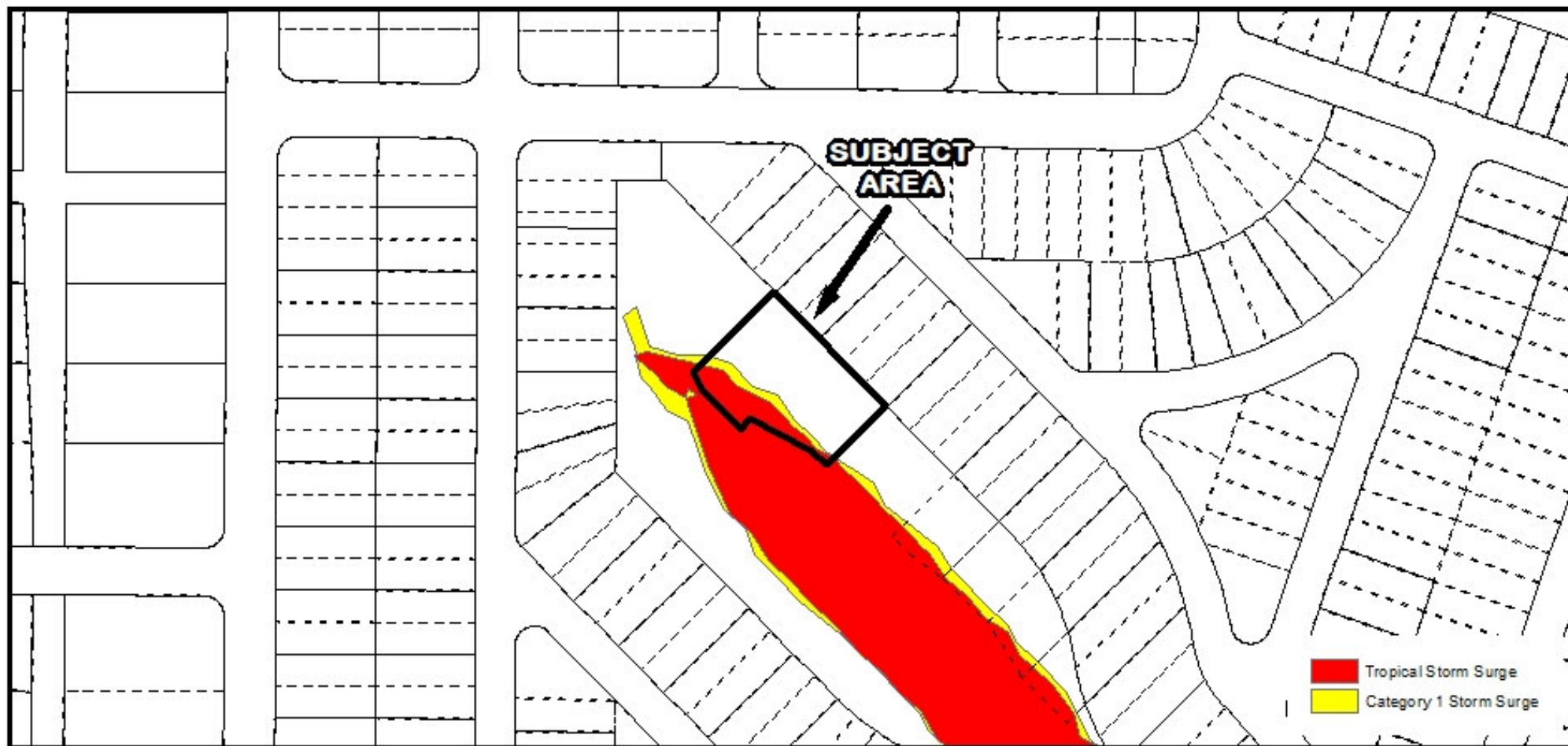
SV-25-01 Zoning Designations



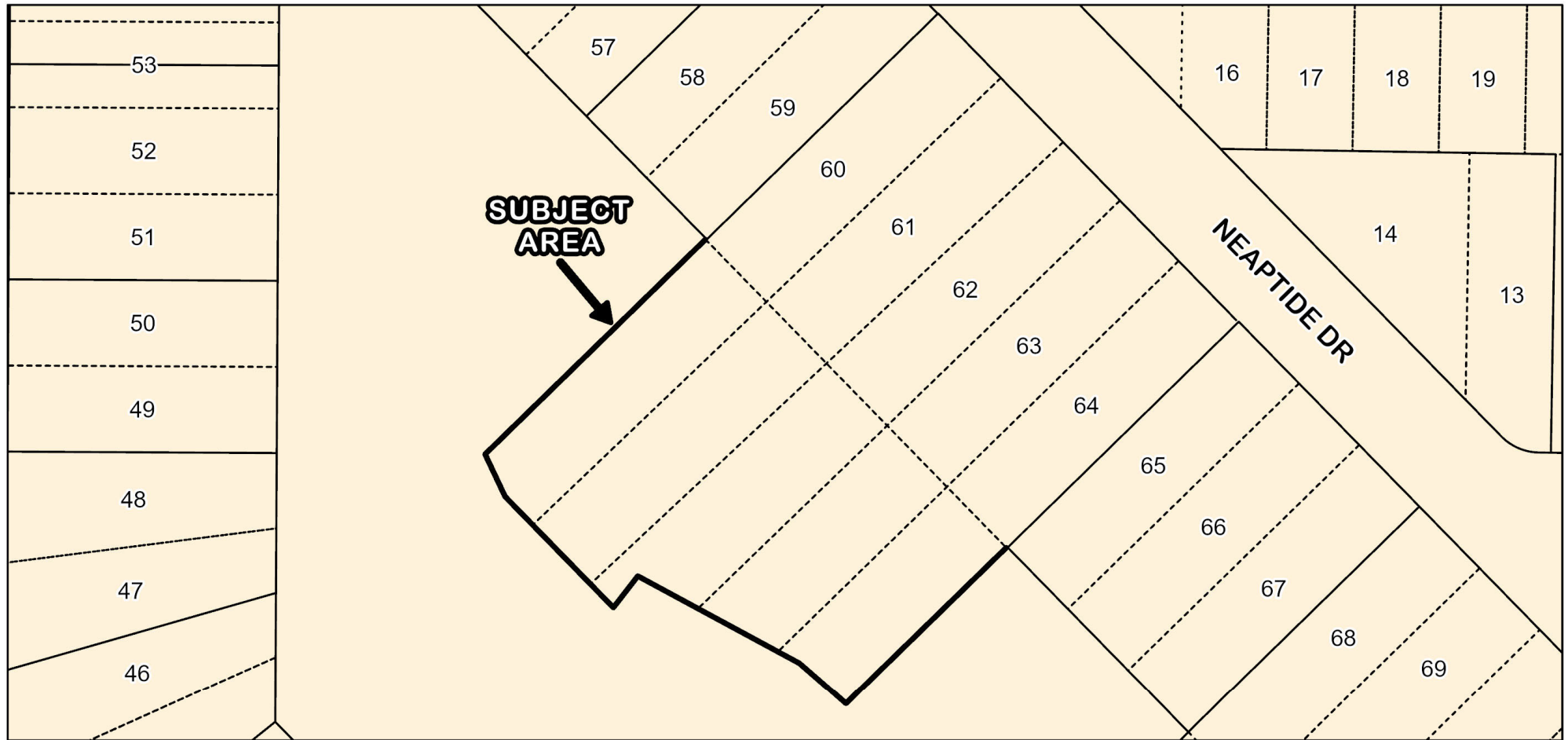
SV-25-01 1,000' Mailed Notice Area Map



SV-25-01 Flood Zones (Subject Property - 10AE and X Zone)



SV-25-01 Coastal High Hazard Area

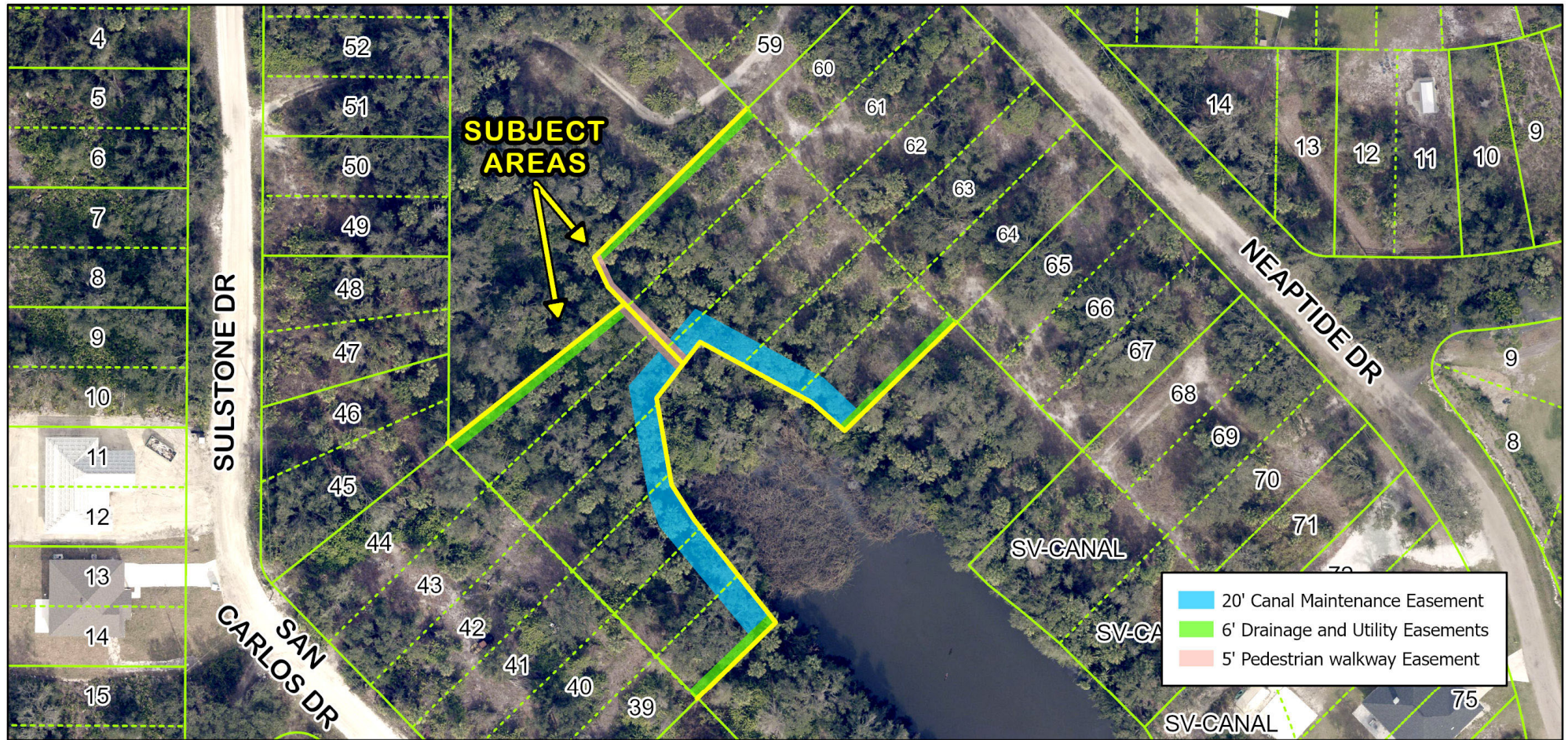


SV-25-01 Proposed Changes





SV-25-01 Proposed Easements



SV-25-01 & SV-25-02 Proposed Easements