

# CSZ-25-09 (Quasi-Judicial)

(Adoption Hearing BCC Land Use Meeting 07-22-2025)

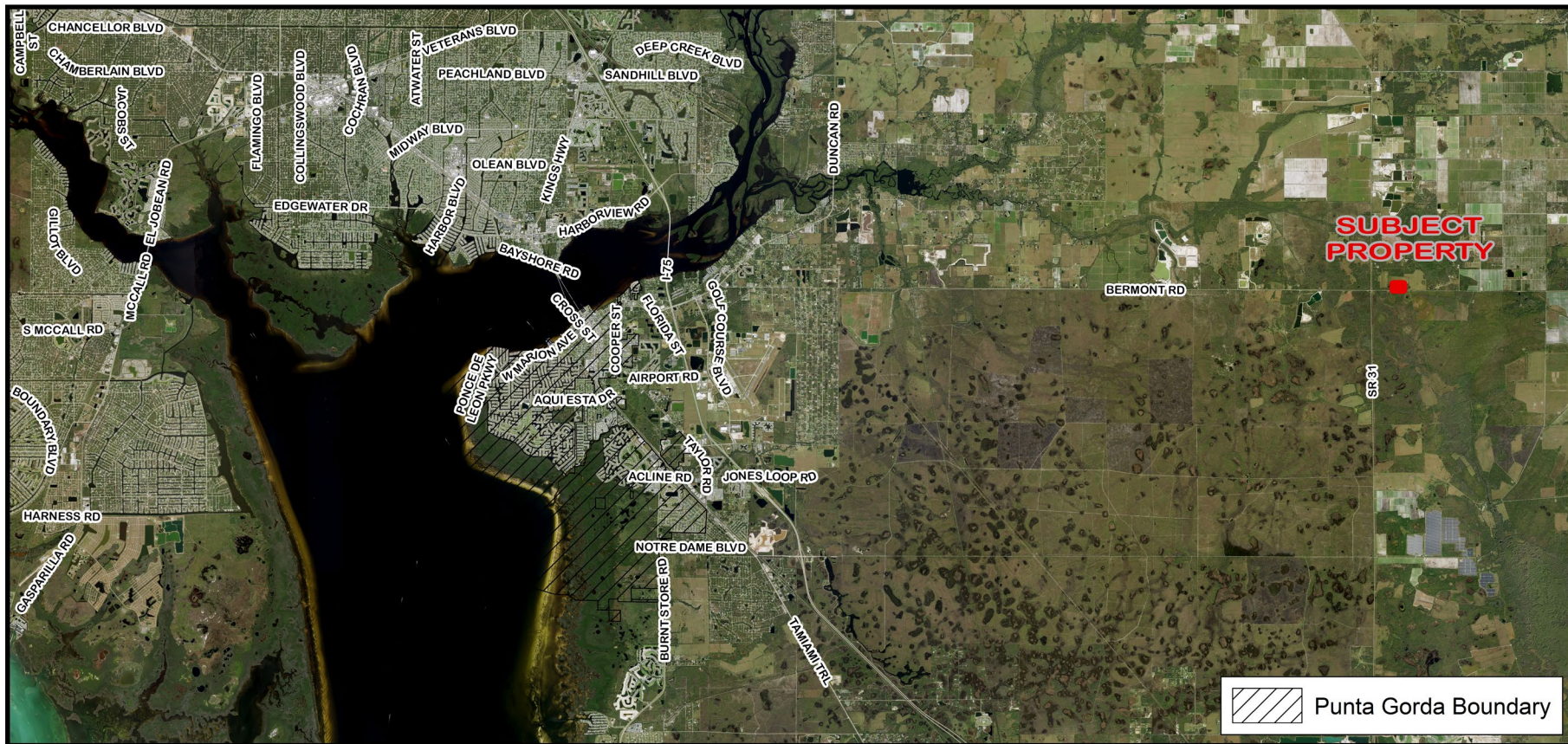
Sajida Y. Khudairi



CHARLOTTE COUNTY  
FLORIDA

# Request

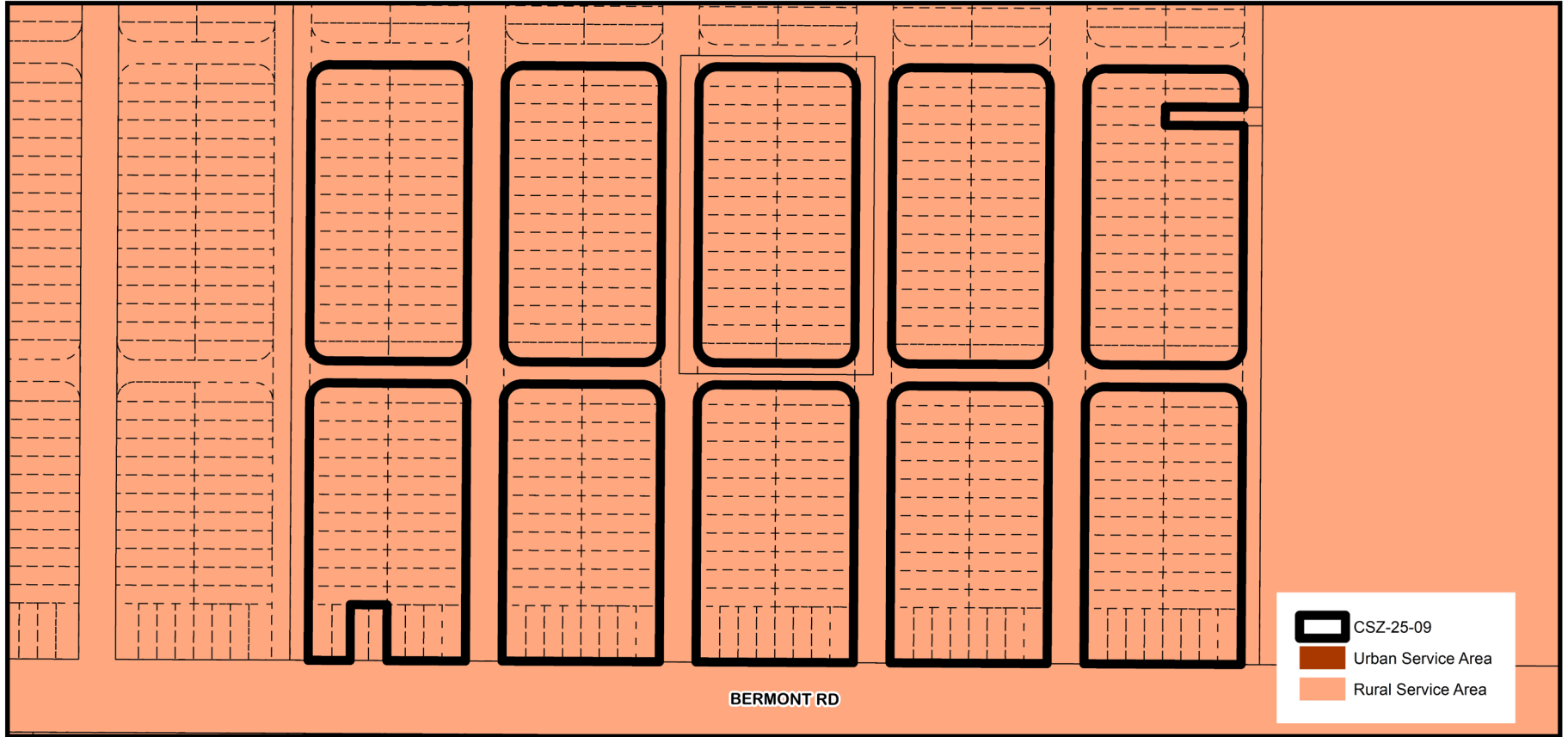
- To certificate Sending Zones, including 317 platted lots in Blocks 101, 102, 103, 104, 105, 126, 127, 128, 129, & 130 within the Dixie Estates Section E subdivision, generally located north of Bermont Road and east of SR 31, in the East County area, containing 19.63± acres; for calculation and severance of 317 density units .
- The property is located in Commission District I.





**CSZ-25-09 Area Image (Mid-Range)**





## CSZ-25-09 Service Area Delineation

