A large, stylized graphic in the background featuring a yellow sun with rays and several green leaves of varying shades, all set against a white background.

# CSZ-26-02 (Quasi-Judicial)

(Adoption Hearing BCC Land Use Meeting 05-26-2026)

Sandra W. Welles Ranch LLC



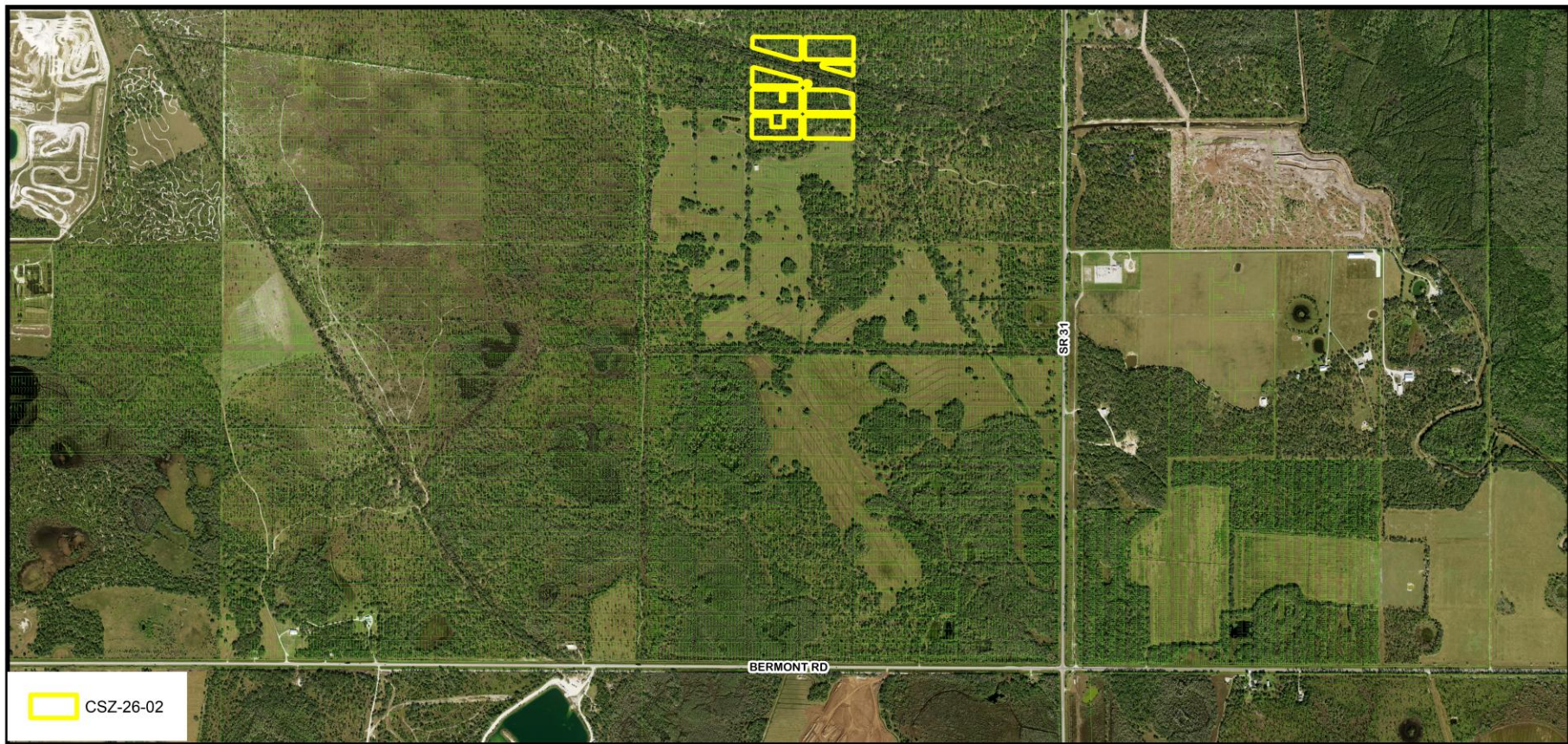
CHARLOTTE COUNTY  
FLORIDA

# Request

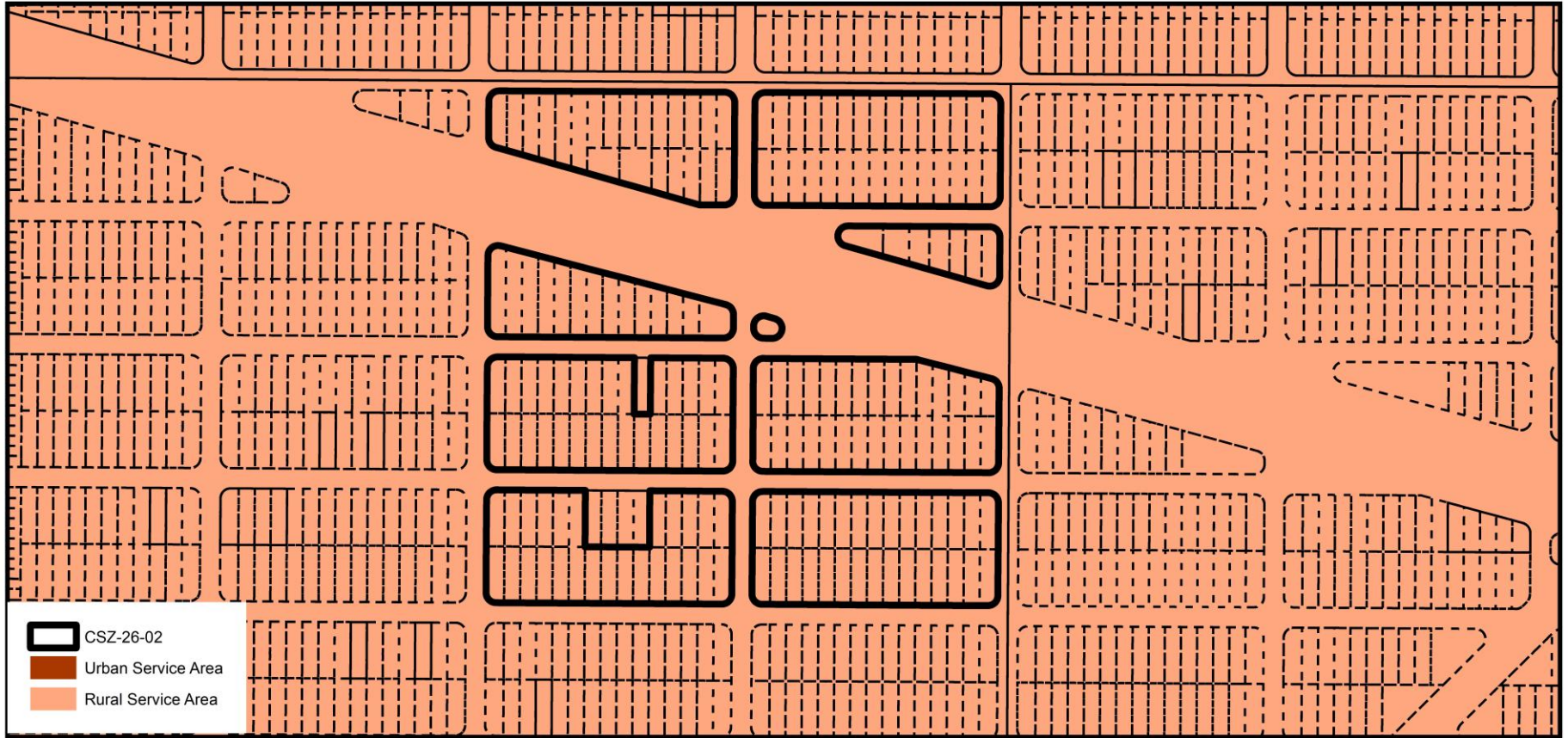
- To certificate Sending Zones, including 189 platted lots in Blocks 1, 2, 6, 7, 8, 13, 14, 31, & 34 and within the Del Verde Section F subdivision, generally located north of Bermont Road and west of SR 31, in the East County area, containing 24.97± acres; for calculation and severance of 189 density units
- The property is located in Commission District I.



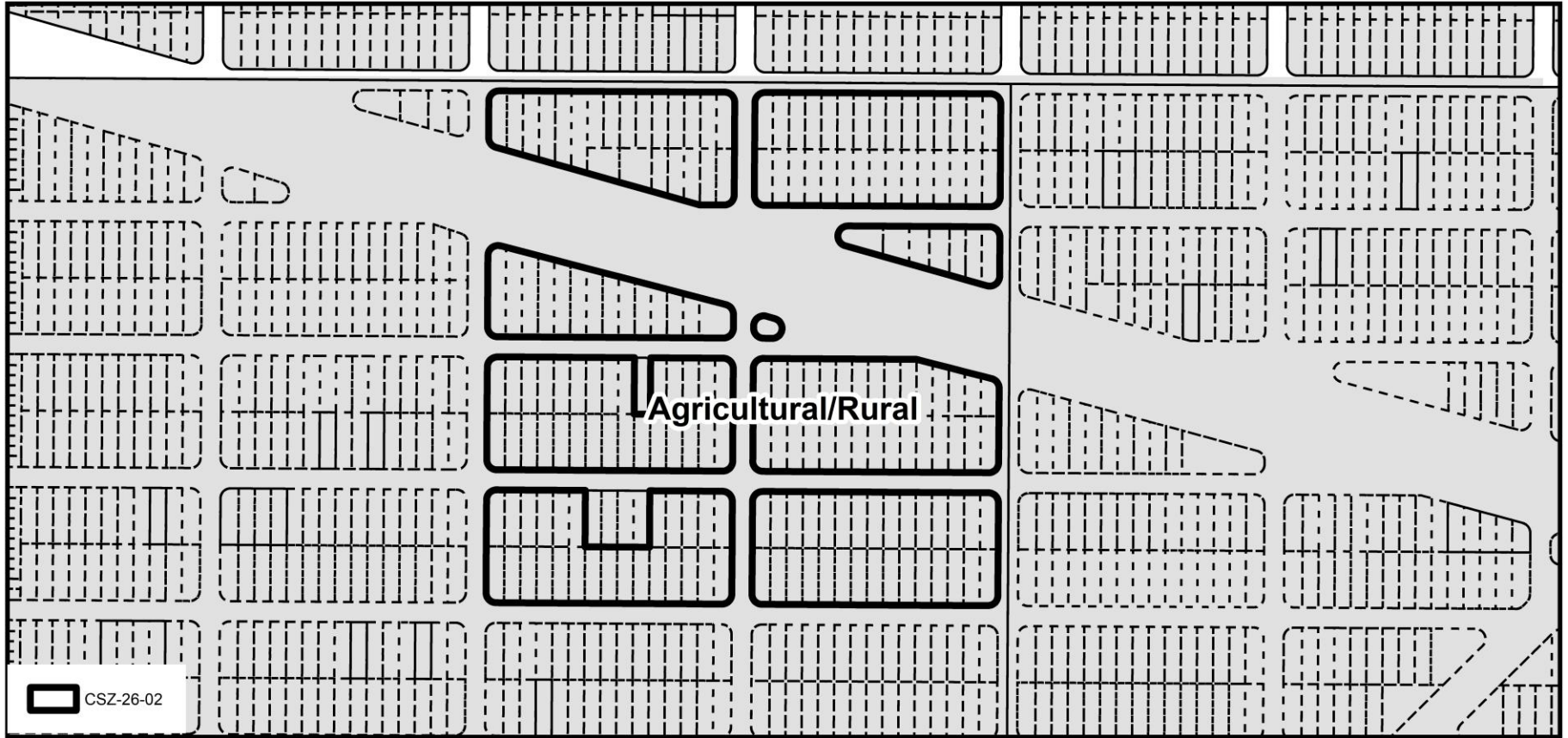
## CSZ-26-02 Location Map

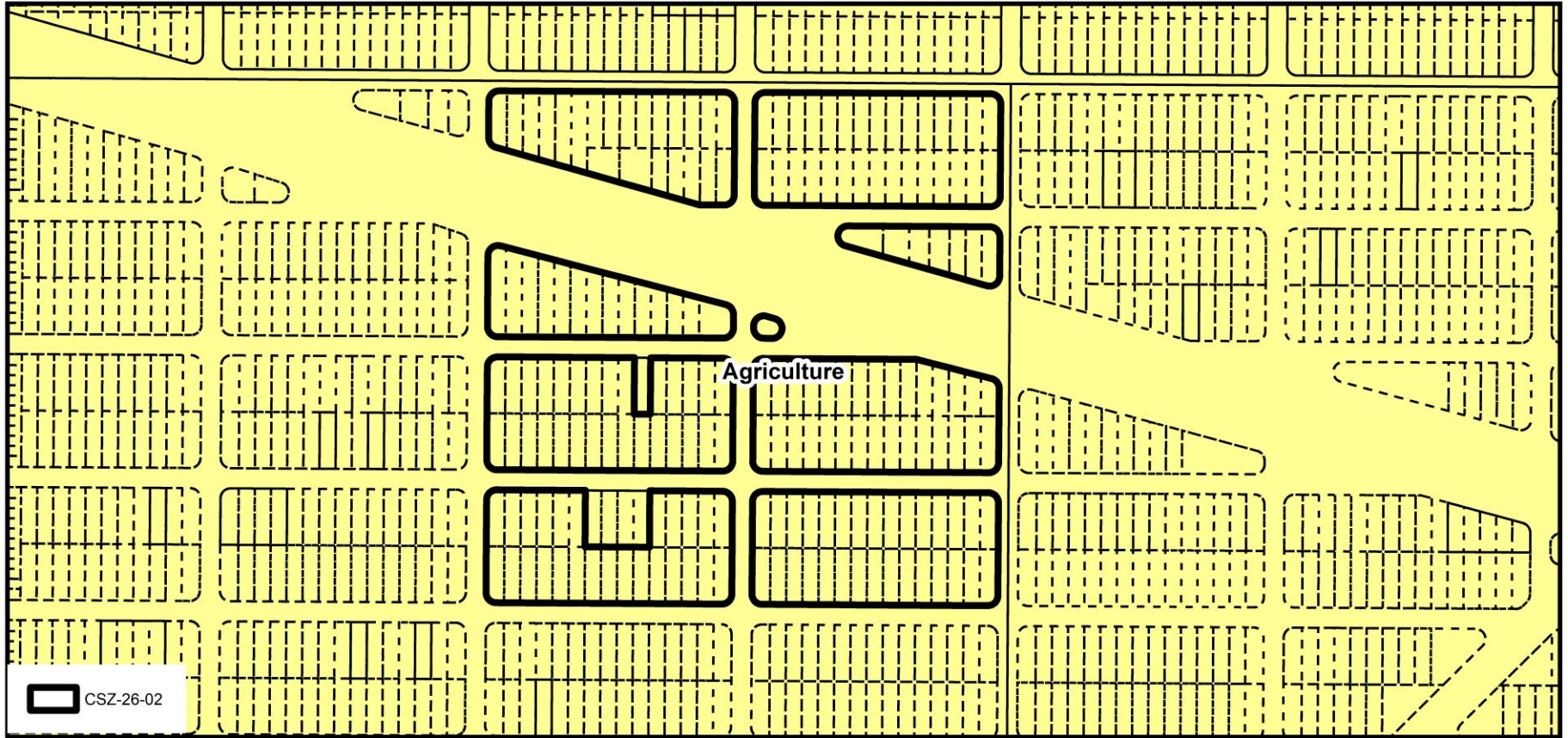






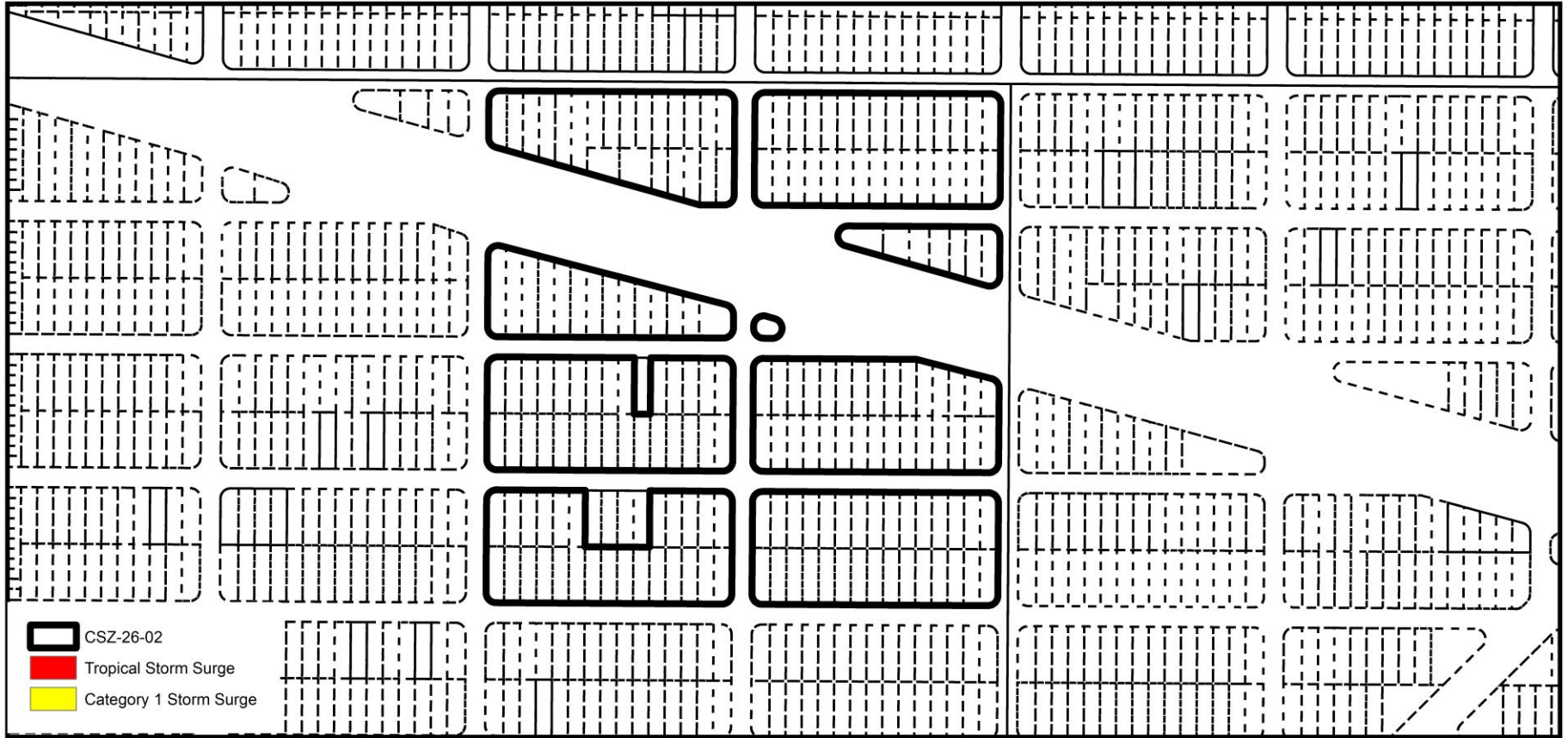
## CSZ-26-02 Zoning Designations



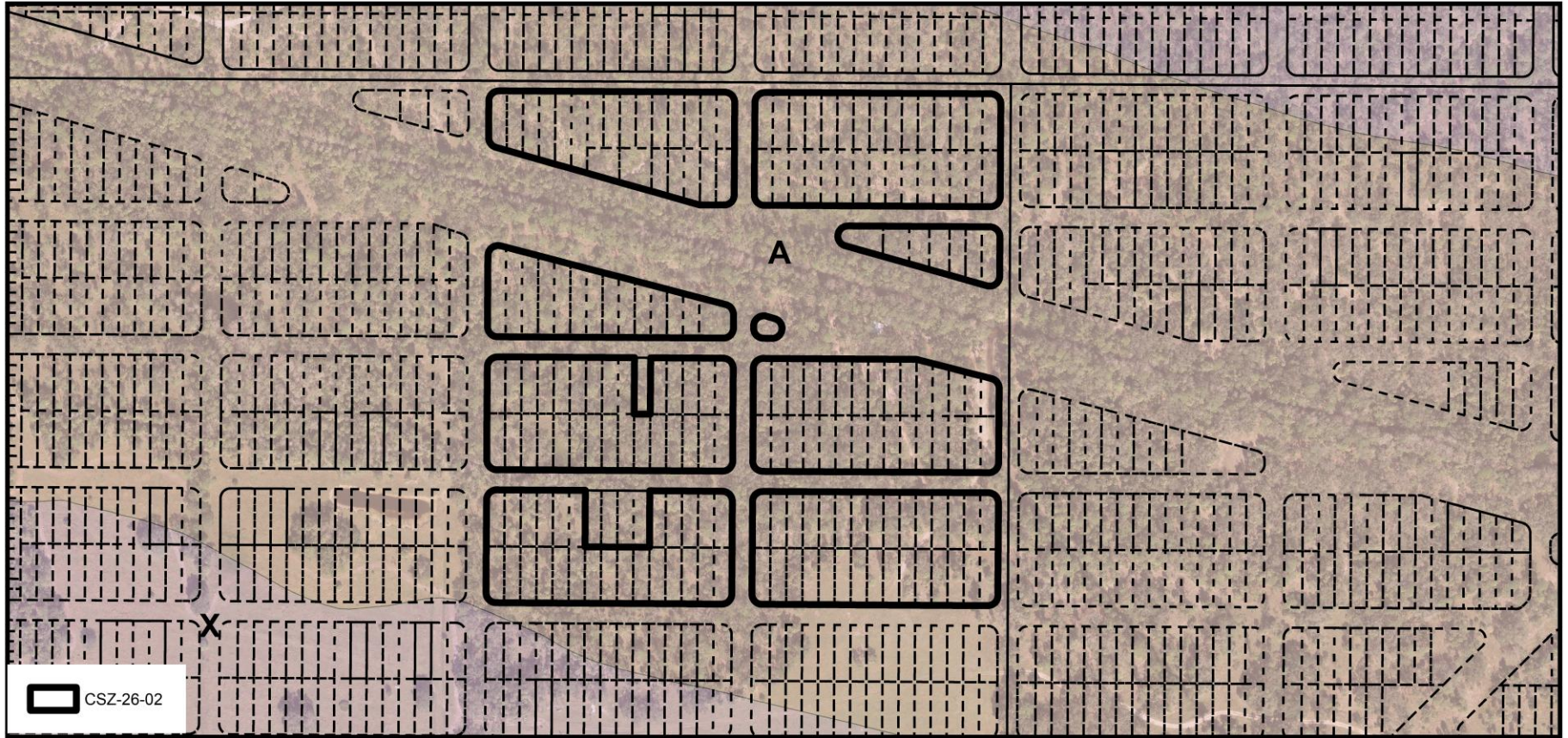




## CSZ-26-02 Zoning Designations



## CSZ-26-02 Coastal High Hazard Area



## CSZ-26-02 Flood Zones (Subject Property - A Zone)