

PAL-24-07 (Legislative)

Z-24-18 (Quasi-Judicial)

(Transmittal Hearing BCC Land Use Meeting 06-10-2025 for
PAL-24-07 Only

Adoption Hearing BCC Land Use Meeting 07-22-2025
for PAL-24-07 and Z-24-18)

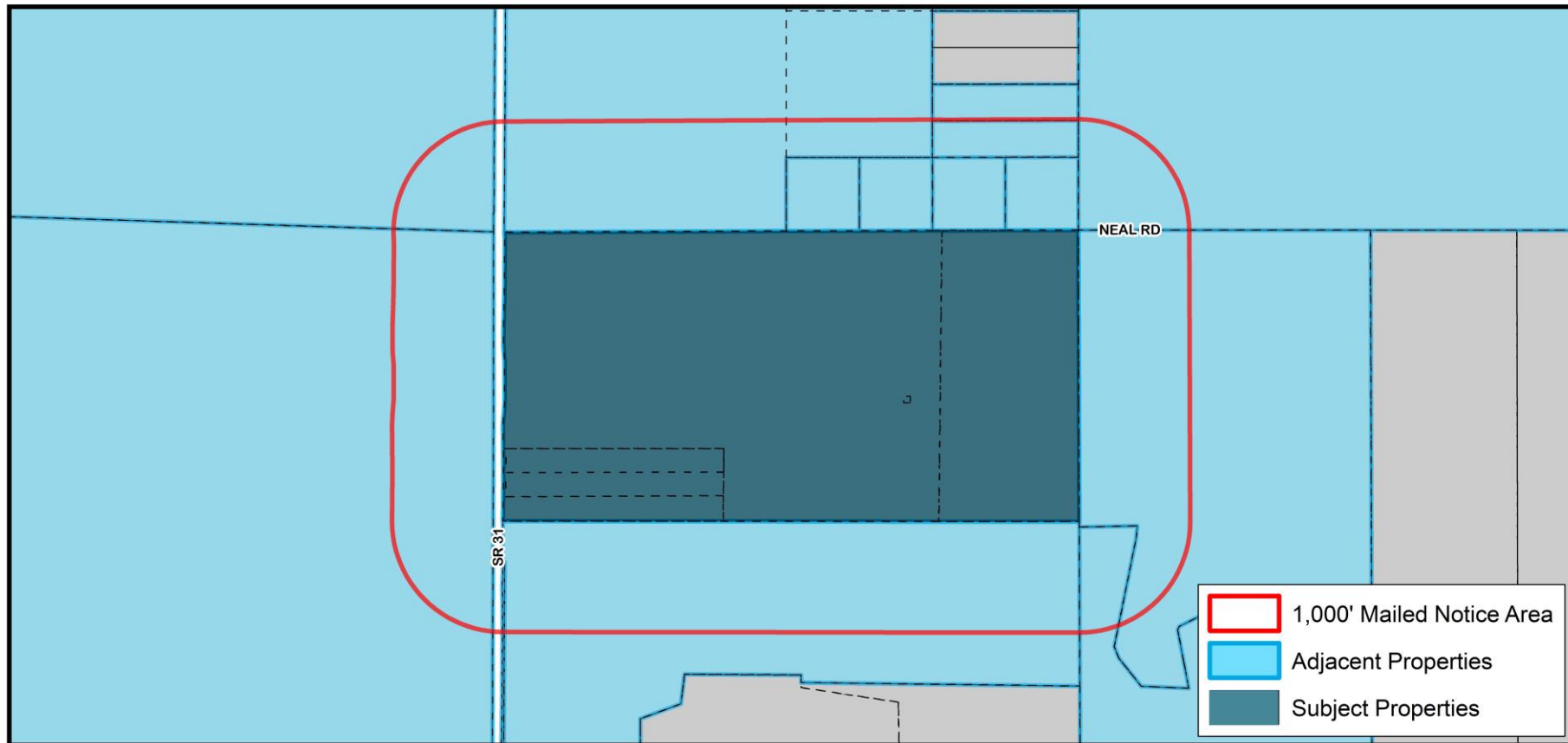
Bluegrass Land & Mine

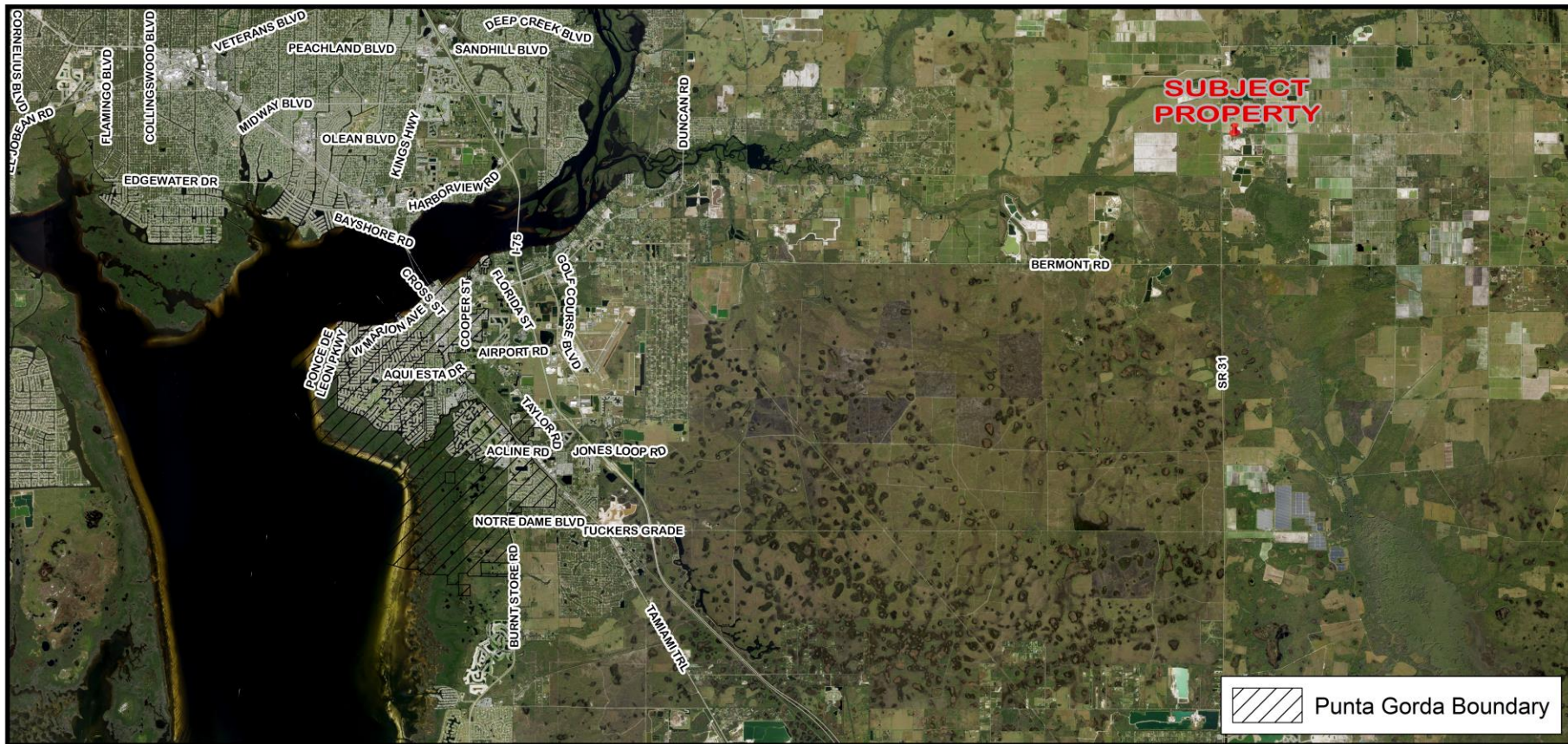


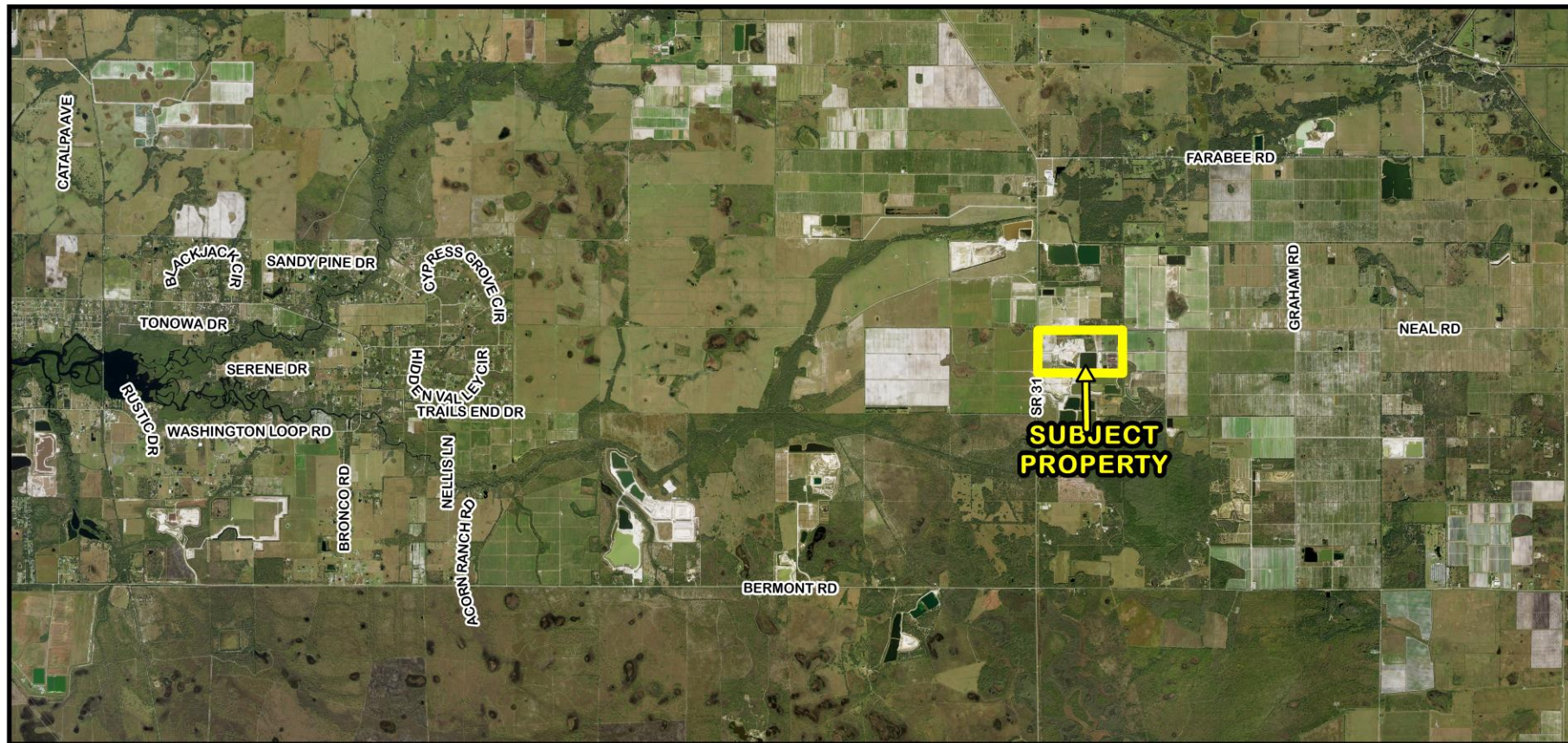
CHARLOTTE COUNTY
FLORIDA

Proposed Changes

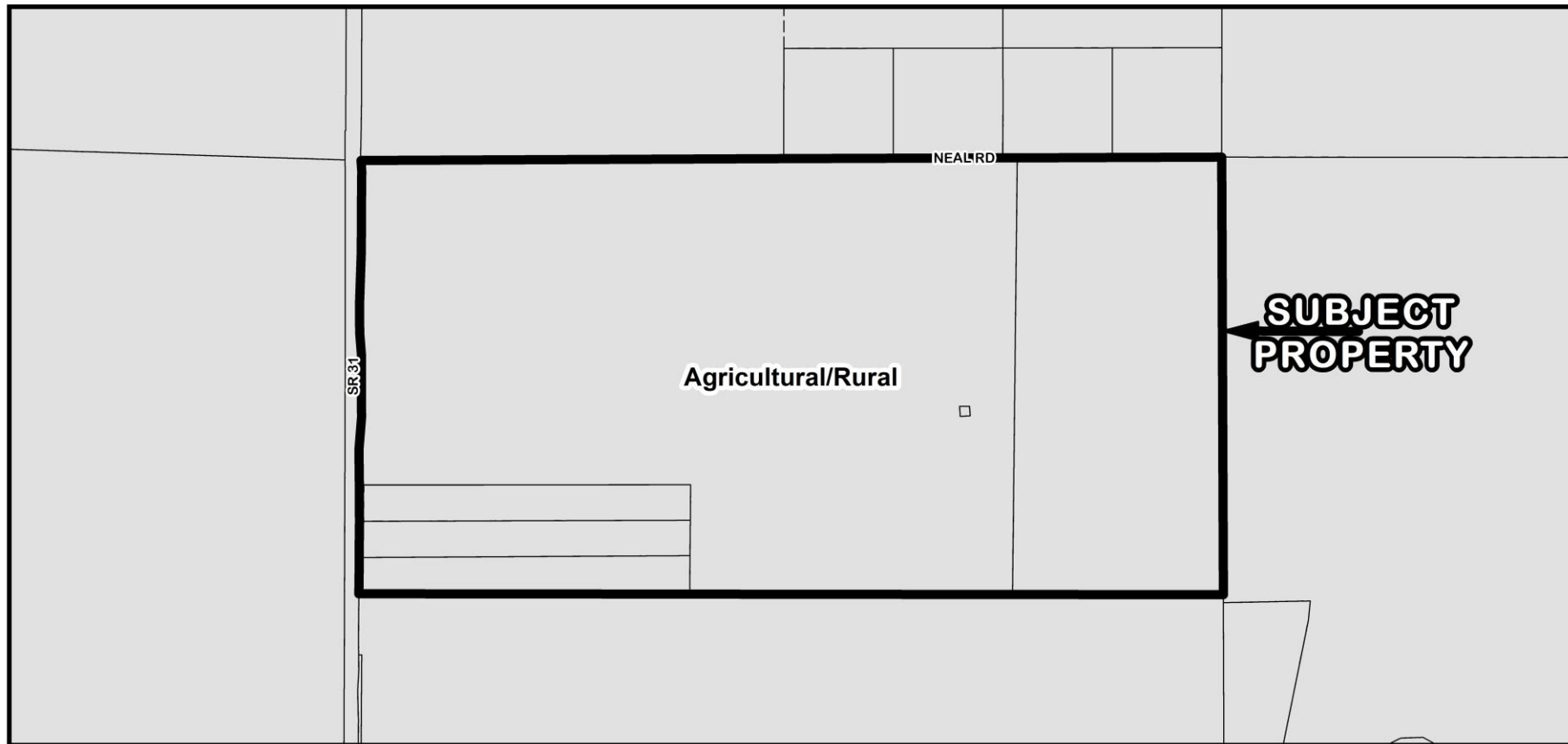
- A Large Scale Plan Amendment (PAL-24-08) from Agriculture (AG) to Mineral Resource Extraction (MRE)
- A rezoning (Application Number Z-24-18) from Agriculture (AG) to Excavation and Mining (EM), which will be presented to the Board of County Commissioners on May 27, 2025
- Property located in Commission District I

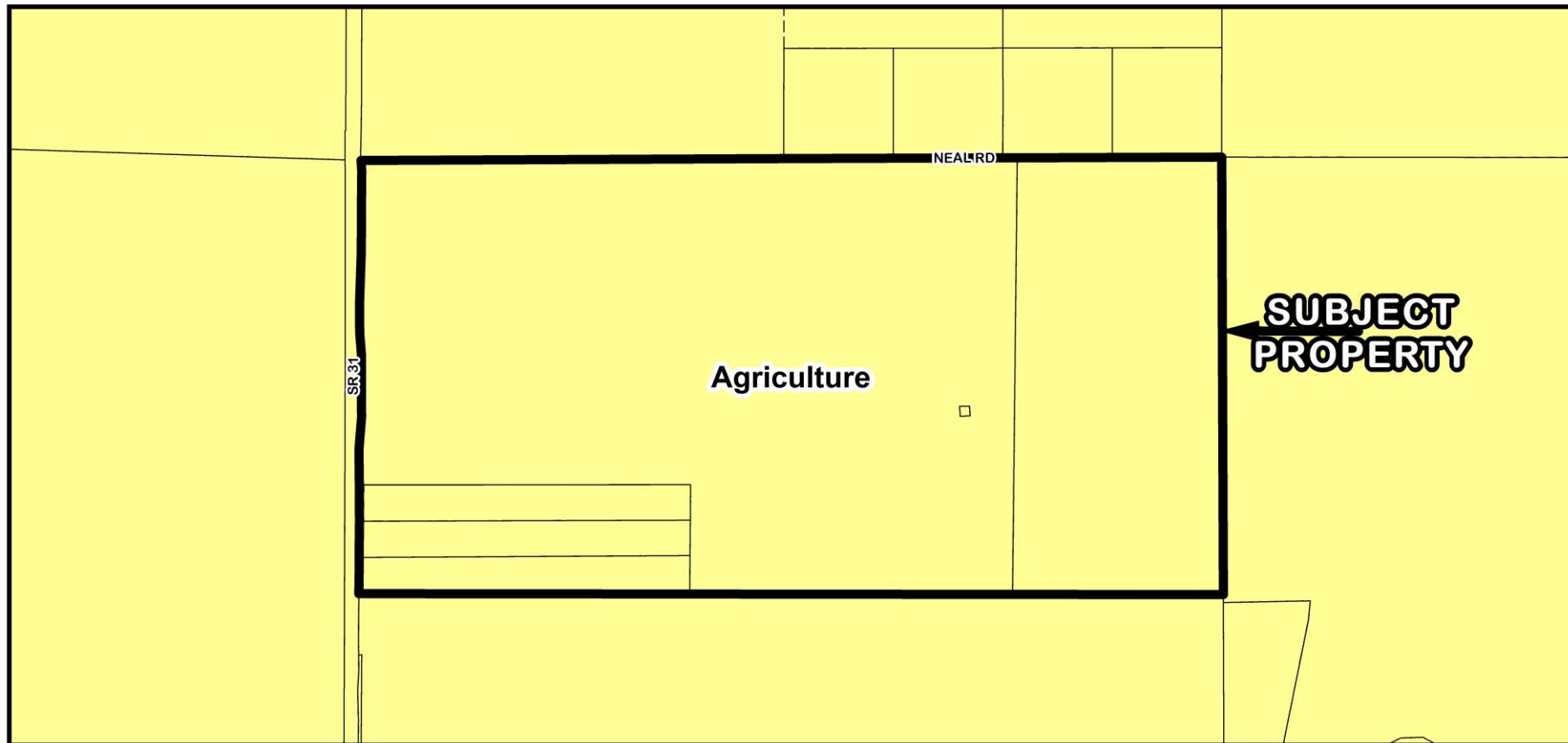


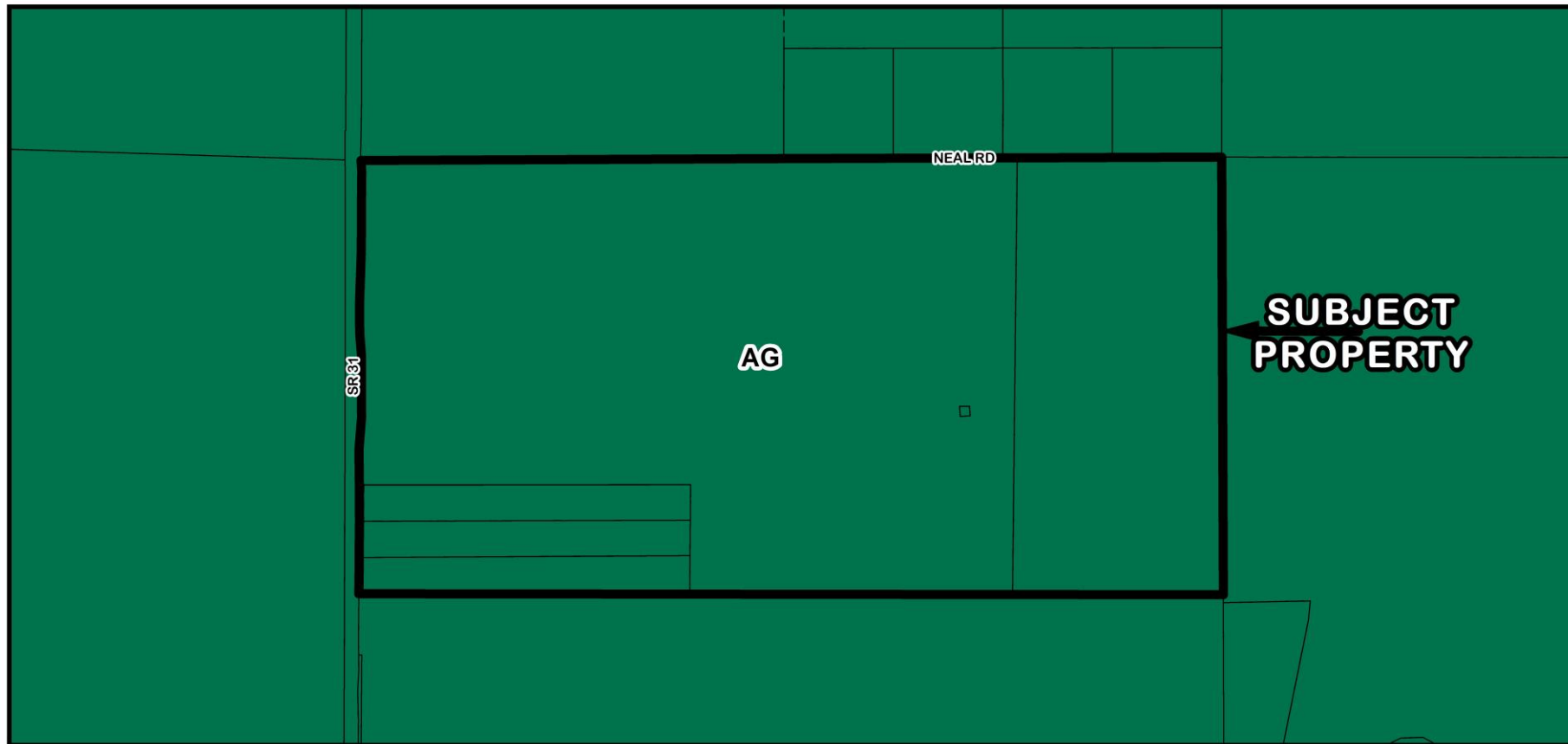


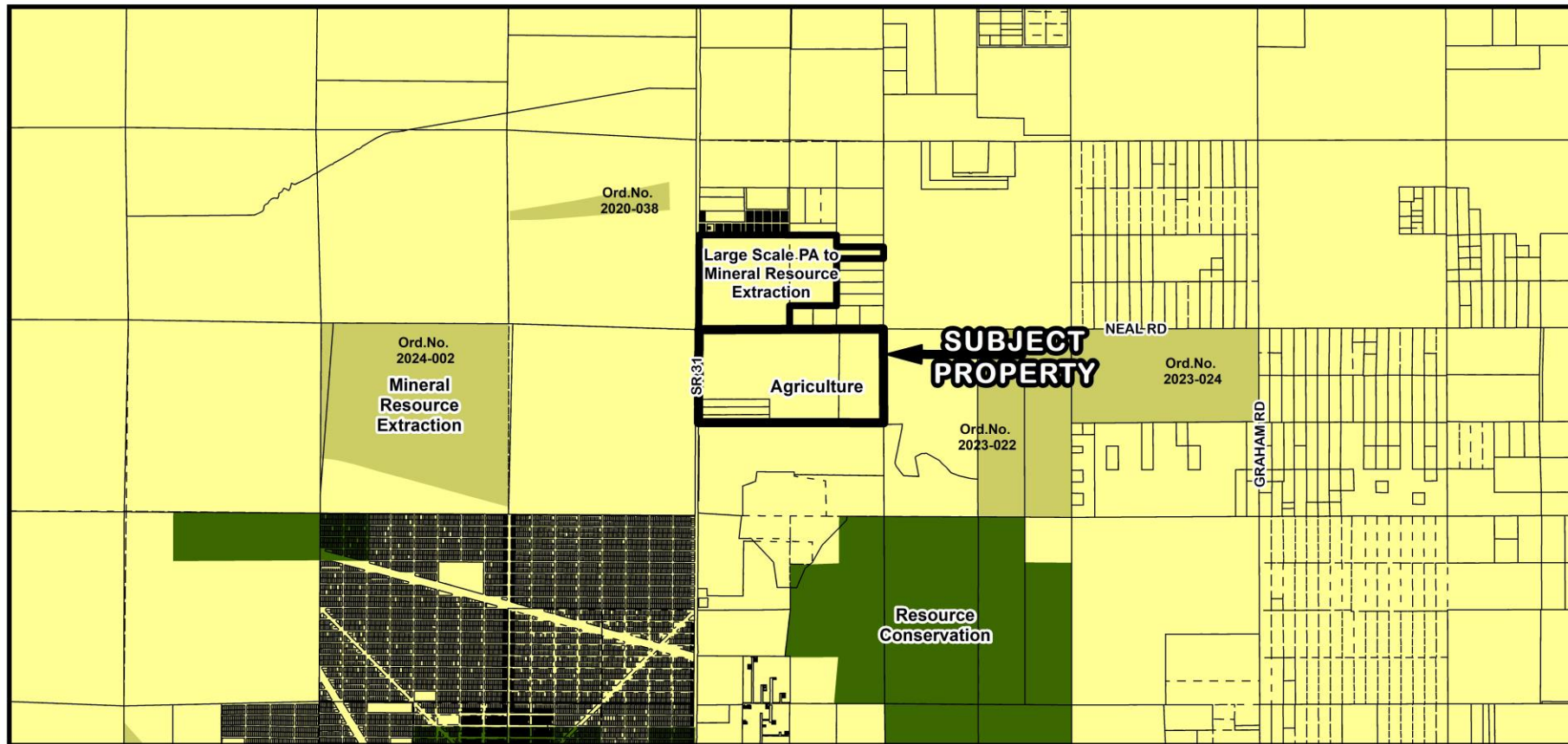




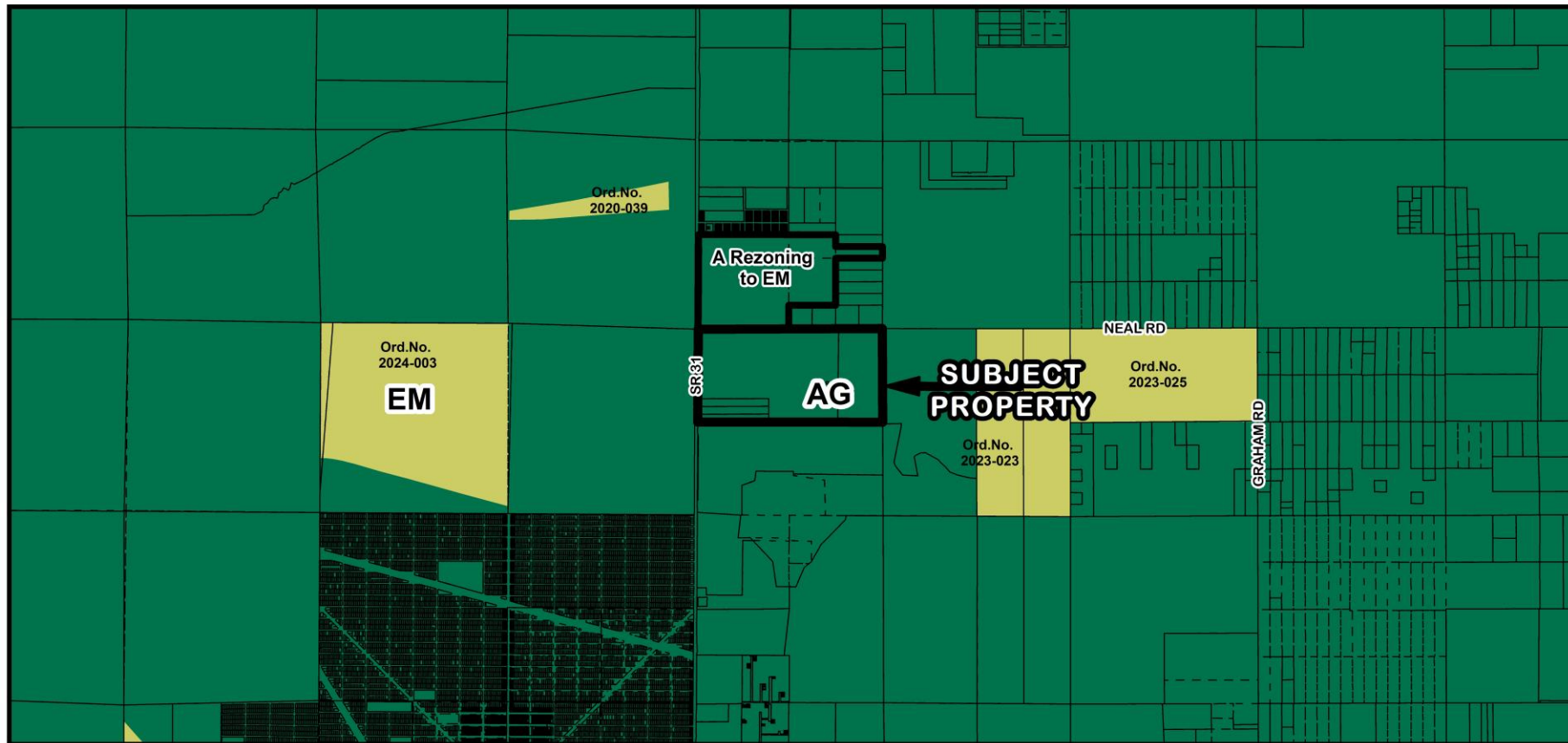




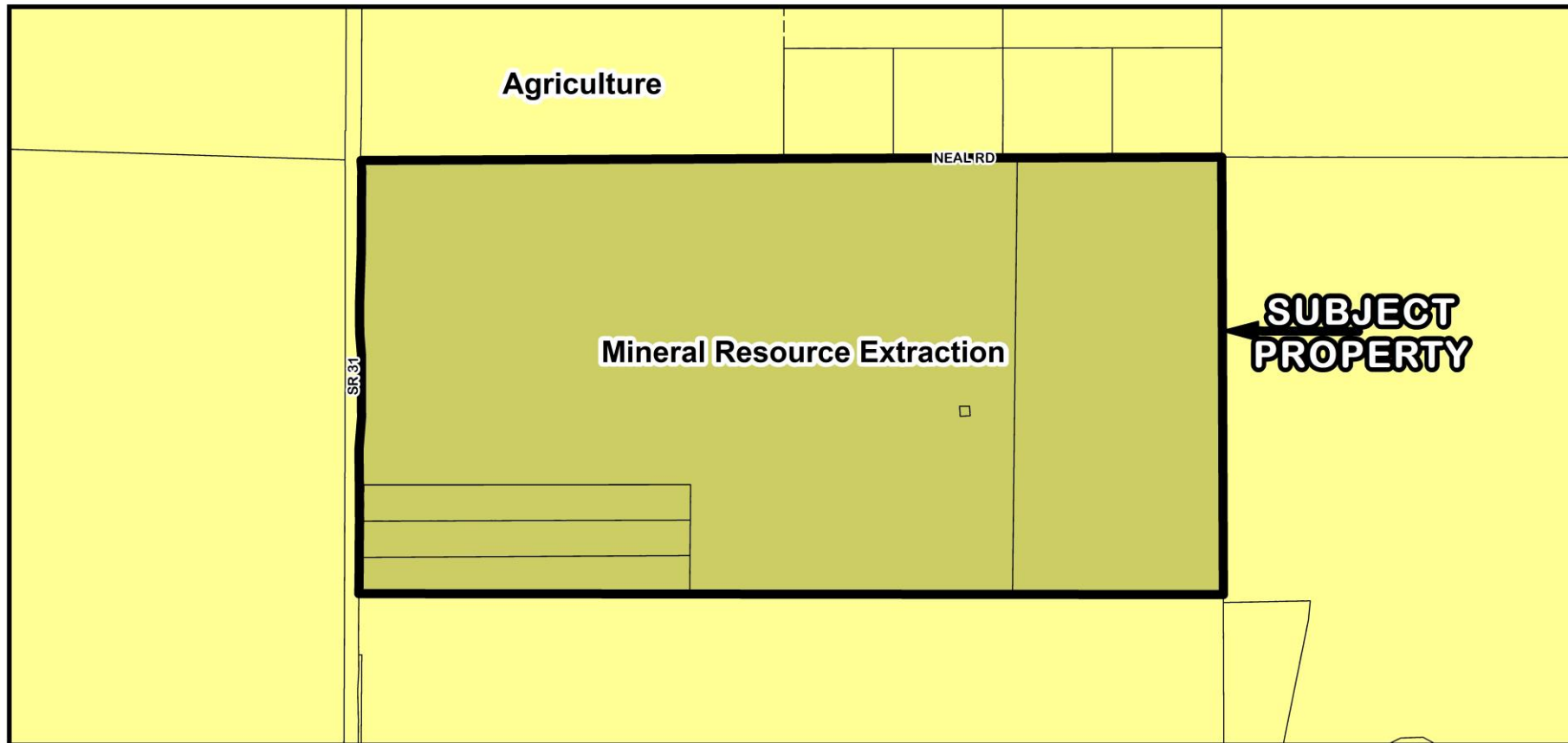


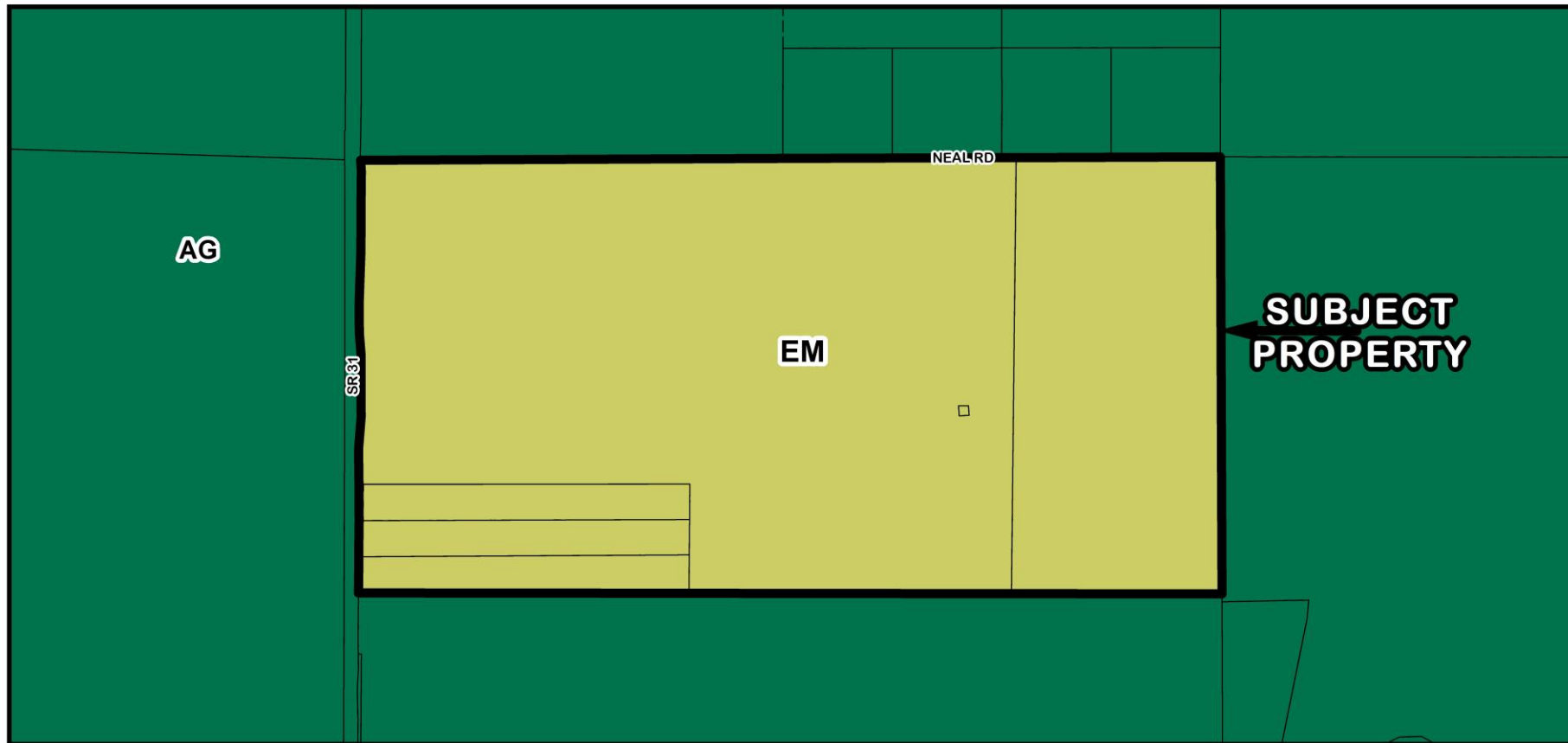


PAL-24-07 and Z-24-18 Surrounding Existing FLUM Designations



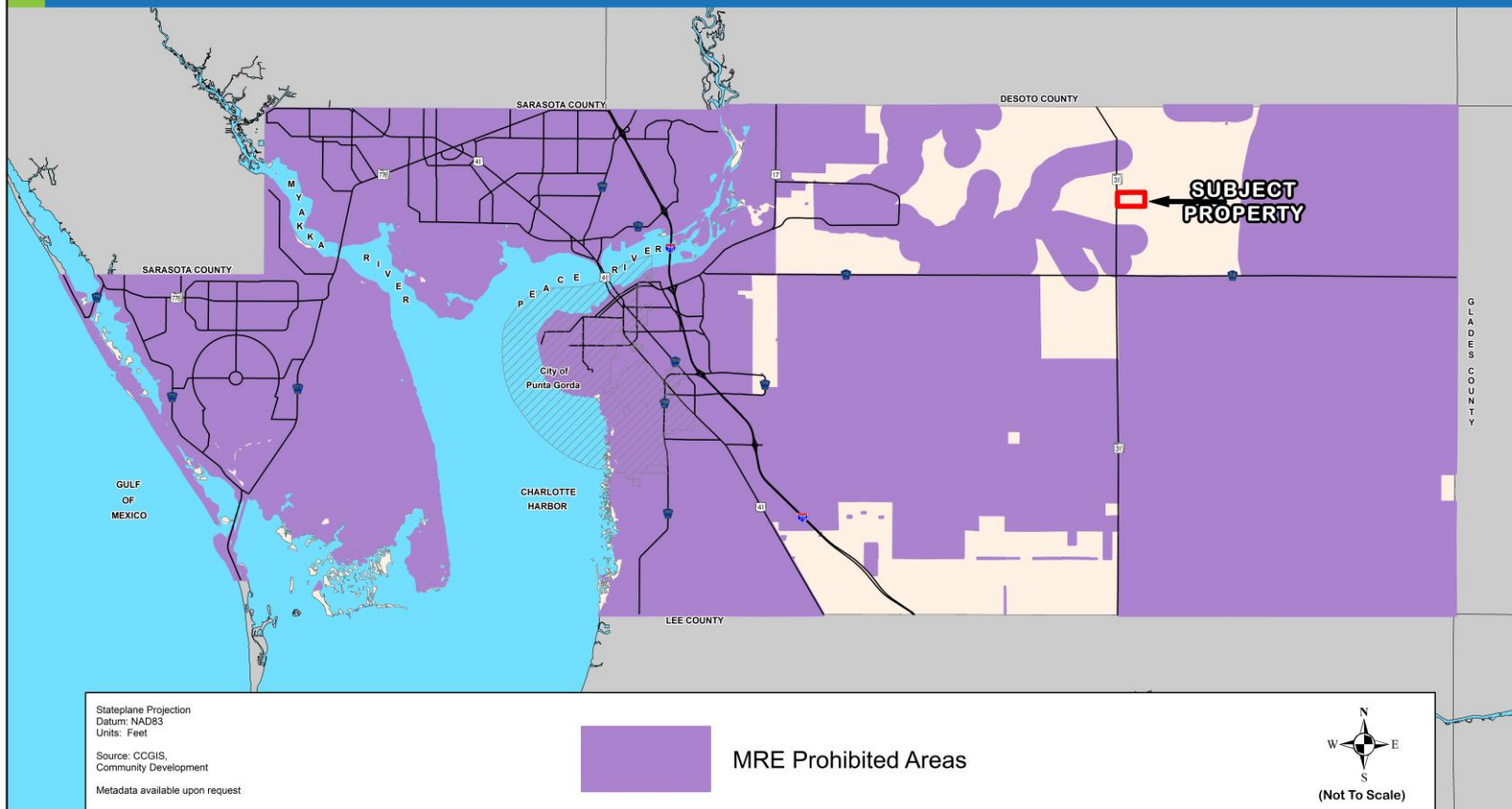
PAL-24-07 and Z-24-18 Surrounding Existing Zoning Designations





CHARLOTTE COUNTY

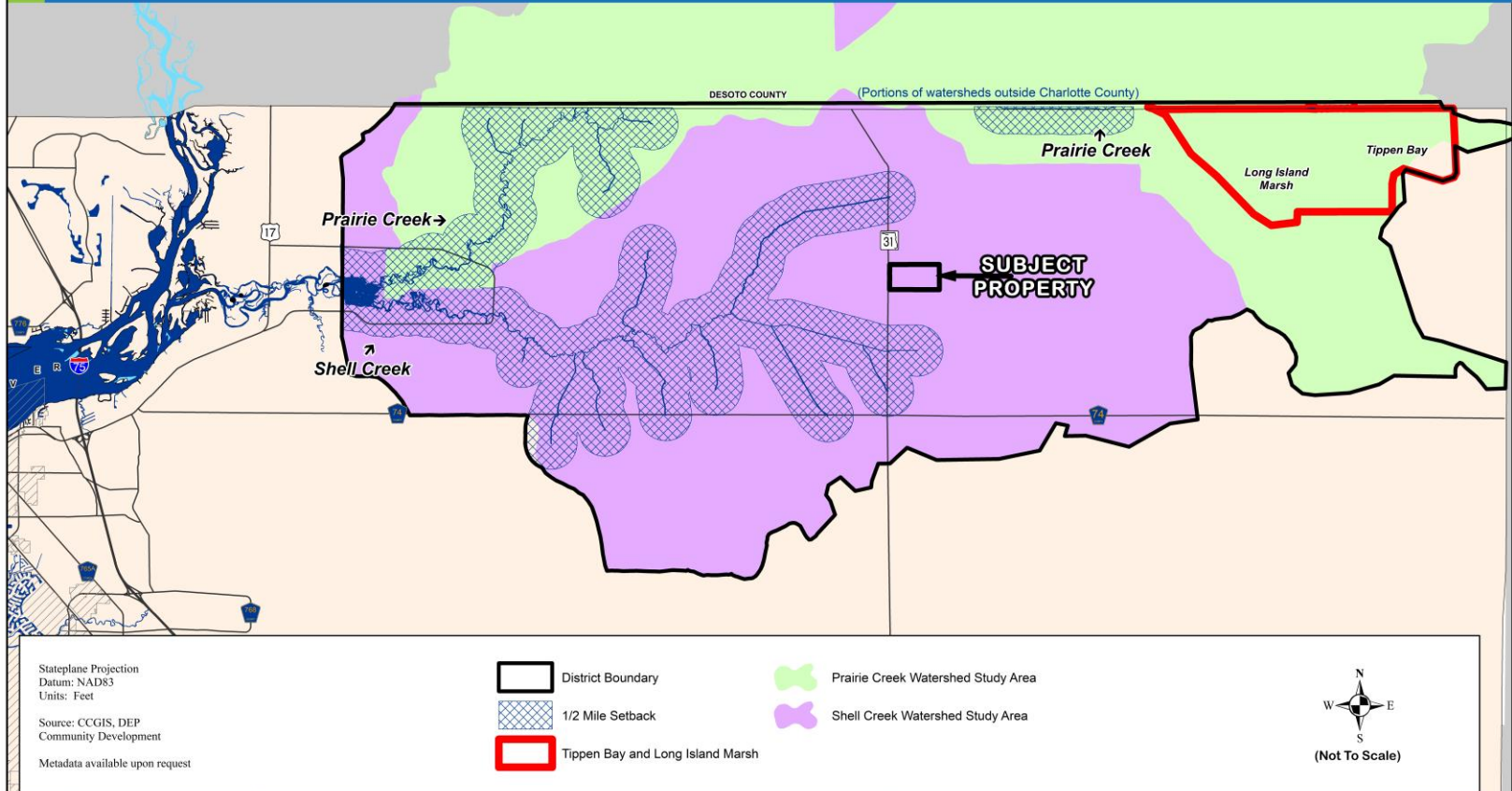
Future Land Use Map Series
Map #24: MRE Prohibited Locations



CHARLOTTE COUNTY

Future Land Use Map Series

Map #4: Watershed Overlay District



CHARLOTTE COUNTY

Future Land Use Map Series


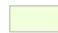
Map #6: Prime Aquifer Recharge Areas



Stateplane Projection
Datum: NAD83
Units: Feet

Source: CCGIS, SWFWMD,
SWFWMD, Community Development

Metadata available upon request

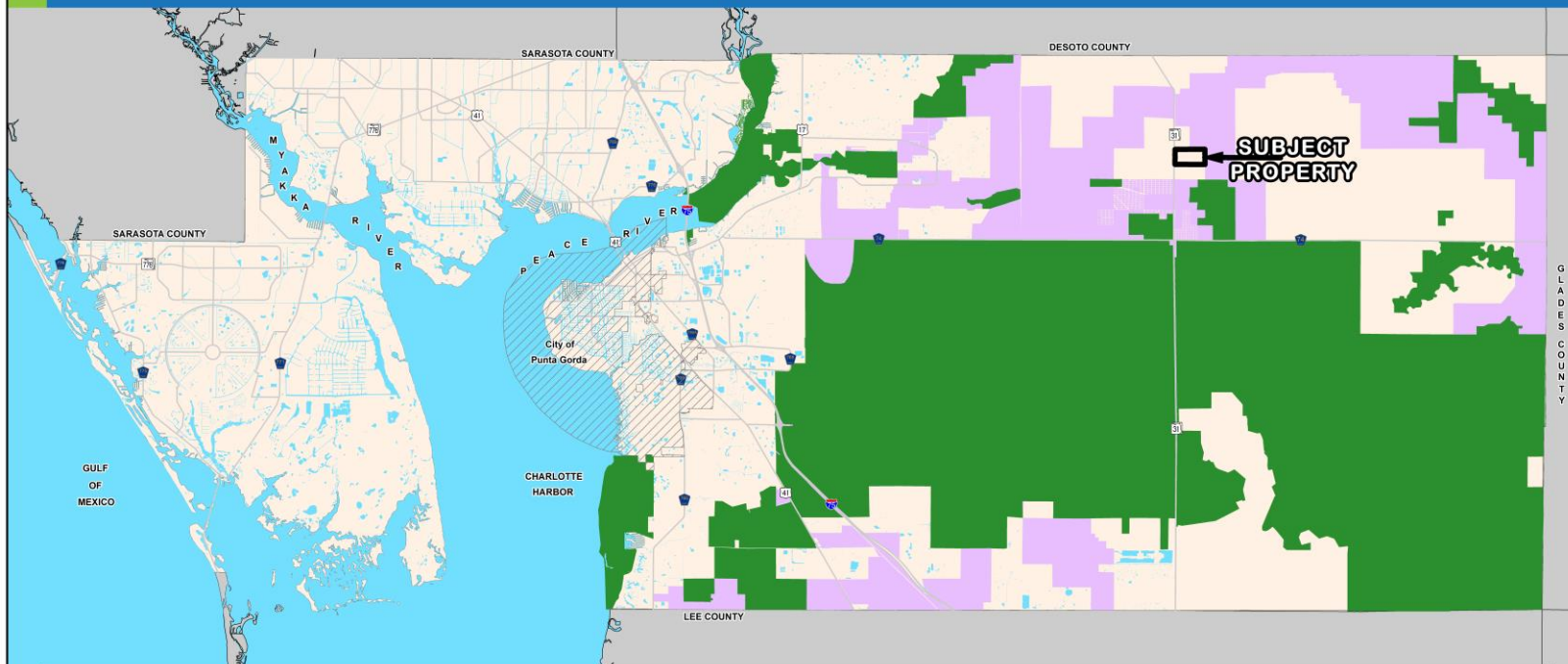
-  No recharge to very low recharge (0.0 to 1.0 inches per year) to the Upper Florida Aquifer
-  No discharge to very low discharge (0.0 to 1.0 inches per year) to the Upper Florida Aquifer



(Not To Scale)

CHARLOTTE COUNTY

Future Land Use Map Series
Map #22: Critical Wildlife Corridors



Stateplane Projection
Datum: NAD83
Units: Feet

Source: CCGIS
Community Development

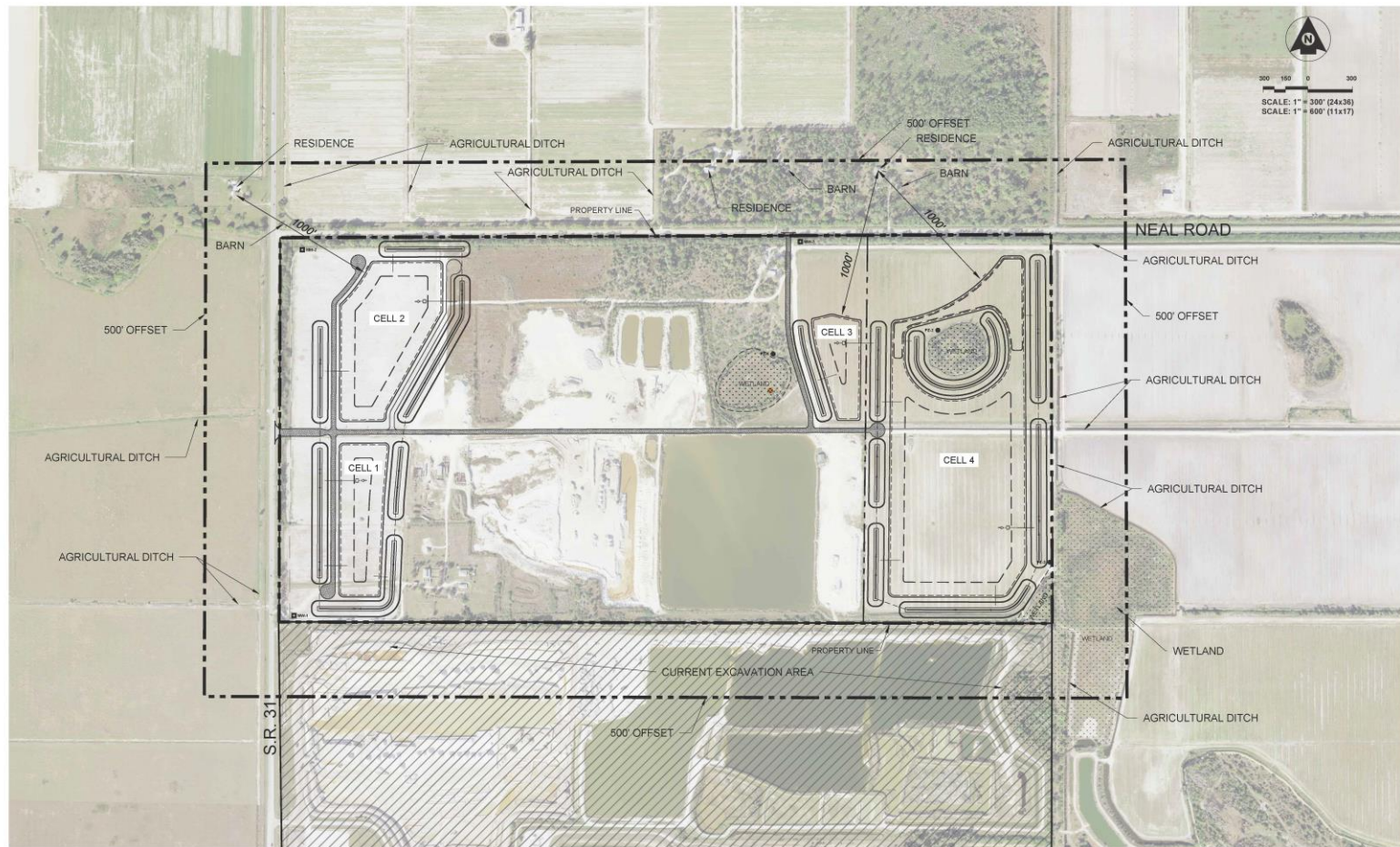
Metadata available upon request

Wildlife Corridor Critical Linkages

Resource Conservation & Preservation



17/02/2025 10:14:17 AM: P:\23-0630- WILLIAMS\700P & EXCAVATION\EXPANSION\CAD\PLAN SET - REZONE\JOB PPT\FEATURES PLAN.DWG - STEVEN MAYNARD



REV.	DATE	BY	CHKD	DESCRIPTION

Project No.:	23-0630
Project Manager:	D H B
Project Engineer:	-
Project Designer:	-
Checked By:	-
Approved By:	D H B

PUNTA GORDA

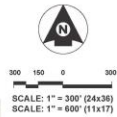
REZONE FOR WILLIAMS EXCAVATION 500 FOOT FEATURES EXHIBIT

SECTION 19, TOWNSHIP 48 SOUTH, RANGE 26 EAST

FLORIDA

GARY W. BAYNE, P.E.
FLORIDA REG. NO. 62474

DATE:	JUNE 2024	DATUM:	NAVD 88
SHEET:	6 of 7	PROJECT NO.:	23-0630



REV.	DATE	BY	CHKD	DESCRIPTION

Project No.	23-0630
Project Manager	D H B
Project Engineer	-
Project Designer	-
Checked By	-
Approved By	D H B

REZONE FOR WILLIAMS EXCAVATION 1/2 MILE FEATURES EXHIBIT

PUNTA GORDA

SECTION 19, TOWNSHIP 48 SOUTH, RANGE 26 EAST

FLORIDA

GARY W. BAYNE, P.E.
FLORIDA REG. NO. 62474

DATE:	JUNE 2024	DRAWN:	NAVD 88
SHEET:	7	of:	7
PROJECT No.:	23-0630		



20 **PAL-24-07 and Z-24-18 Flood Zones (Subject Property - X Zone)**

