

# Z-26-14 (Quasi-Judicial)

(First Public Hearing BCC Land Use Meeting 05-26-2026

Second Public Hearing BCC Land Use Meeting 06-09-2026)

Charlotte County

Board of County Commissioners

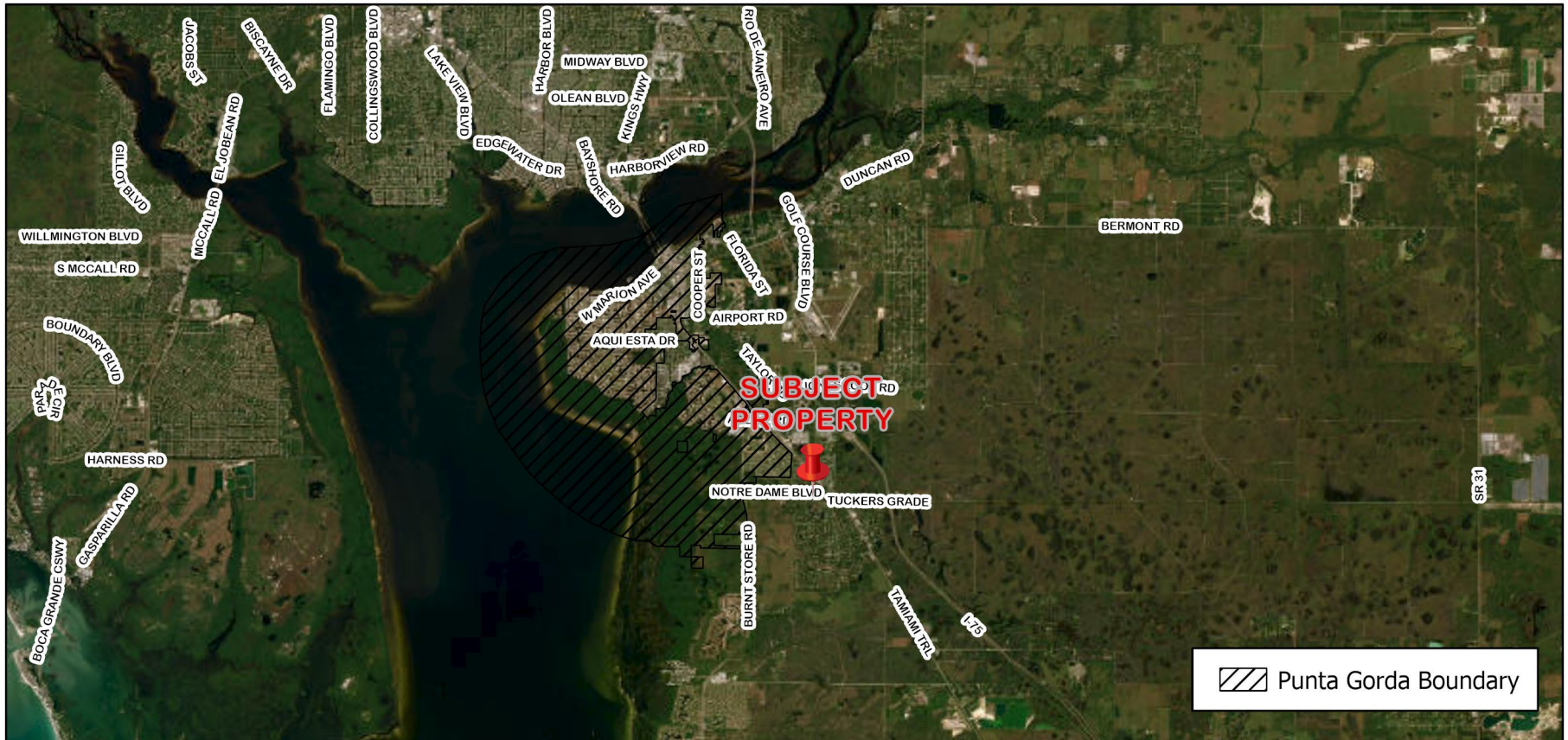


CHARLOTTE COUNTY  
FLORIDA

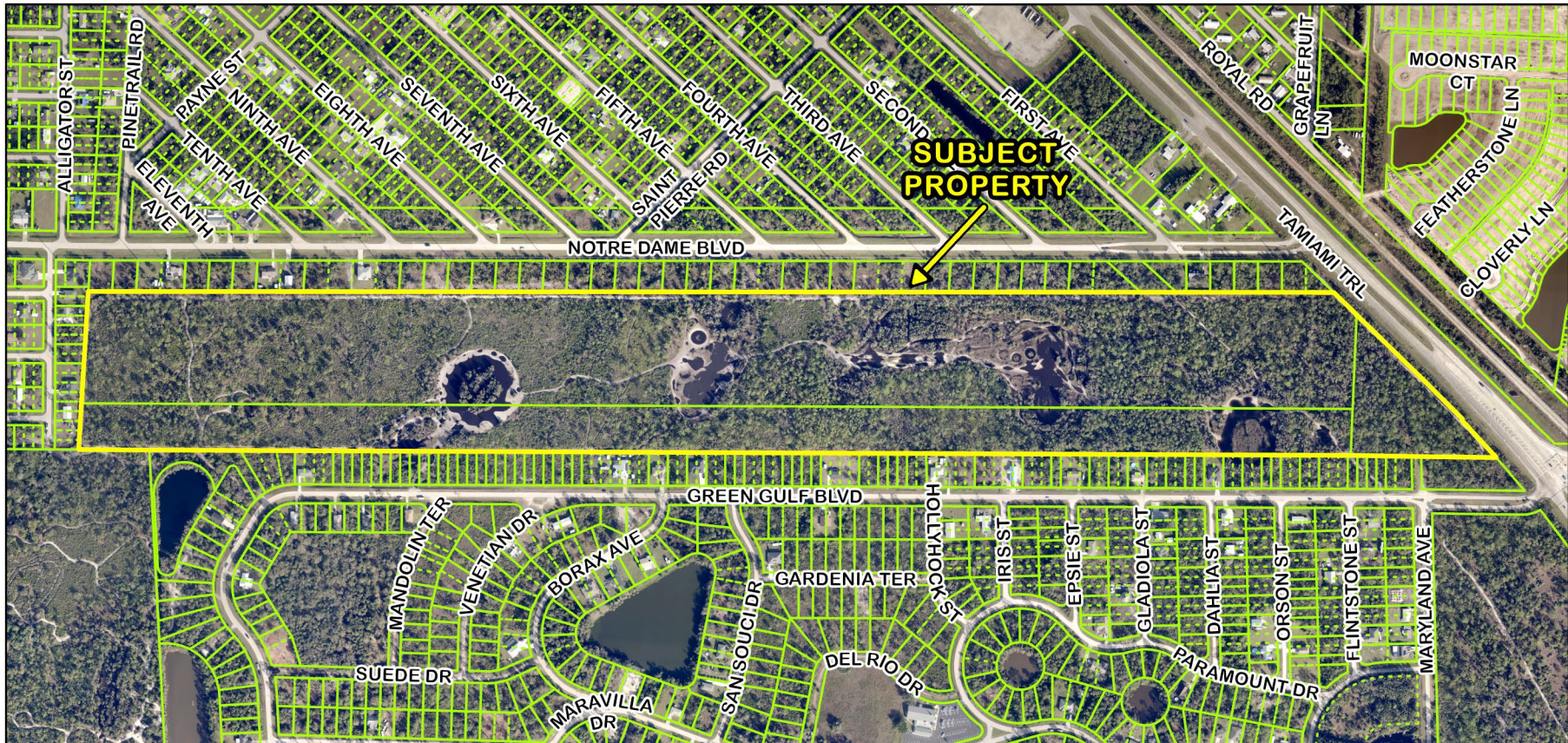
# Proposed Change

- A rezoning from Atlas from Residential Estate 1 (RE-1) (81.884± acres) to Commercial General (CG) (62.824± acres) and Environmentally Sensitive (ES) (19.06± acres)
- The subject property is located in Commission District II.

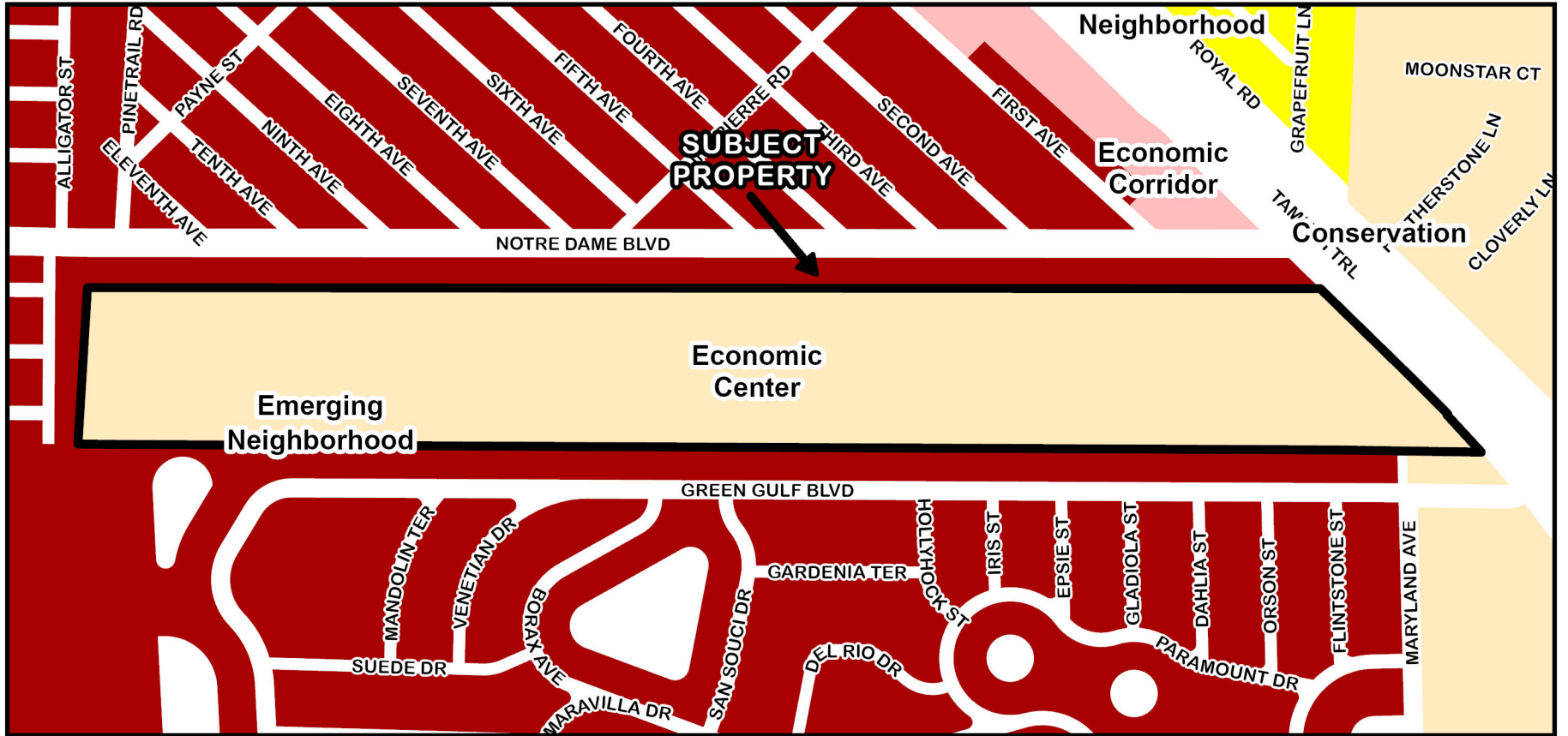




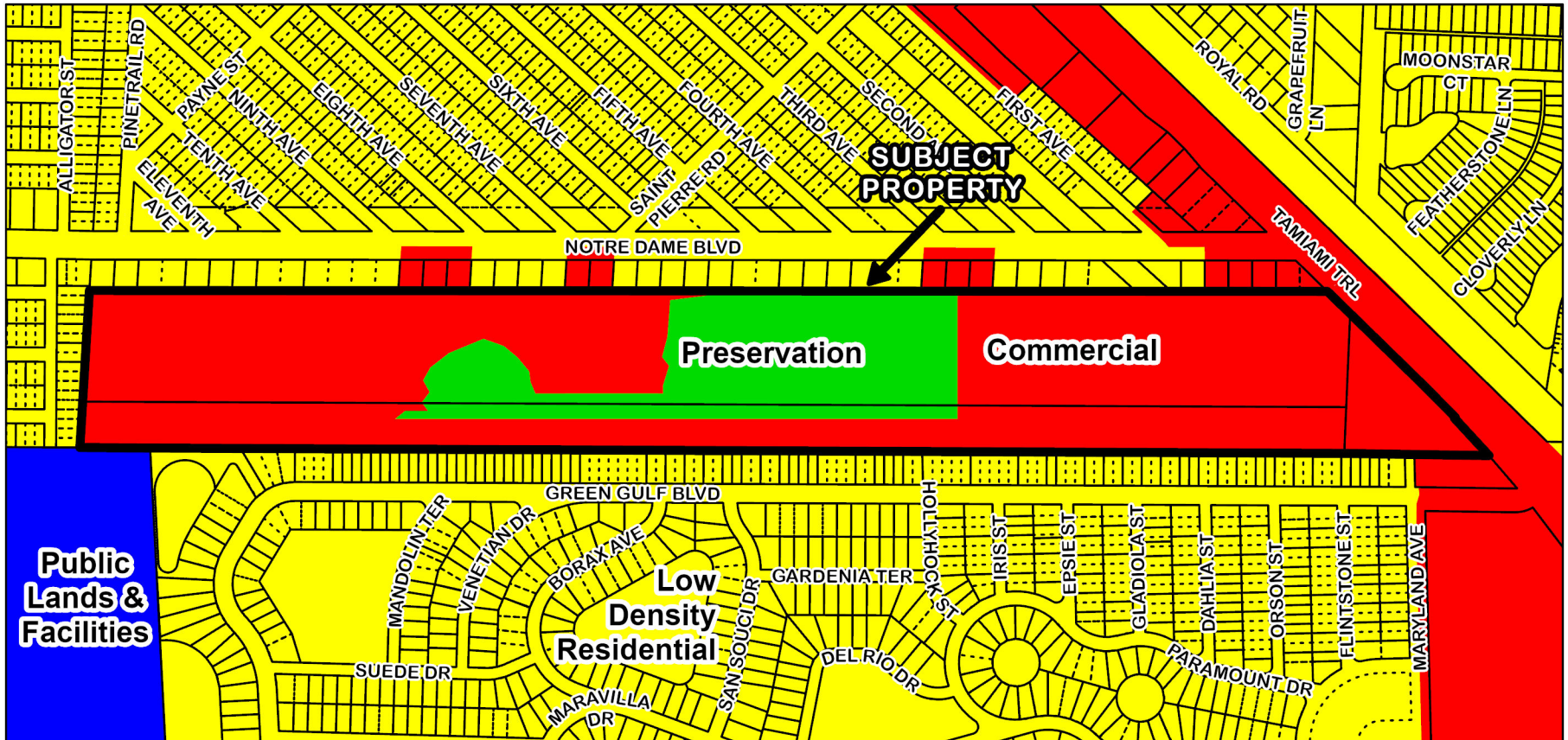
**Z-26-14 Location Map**



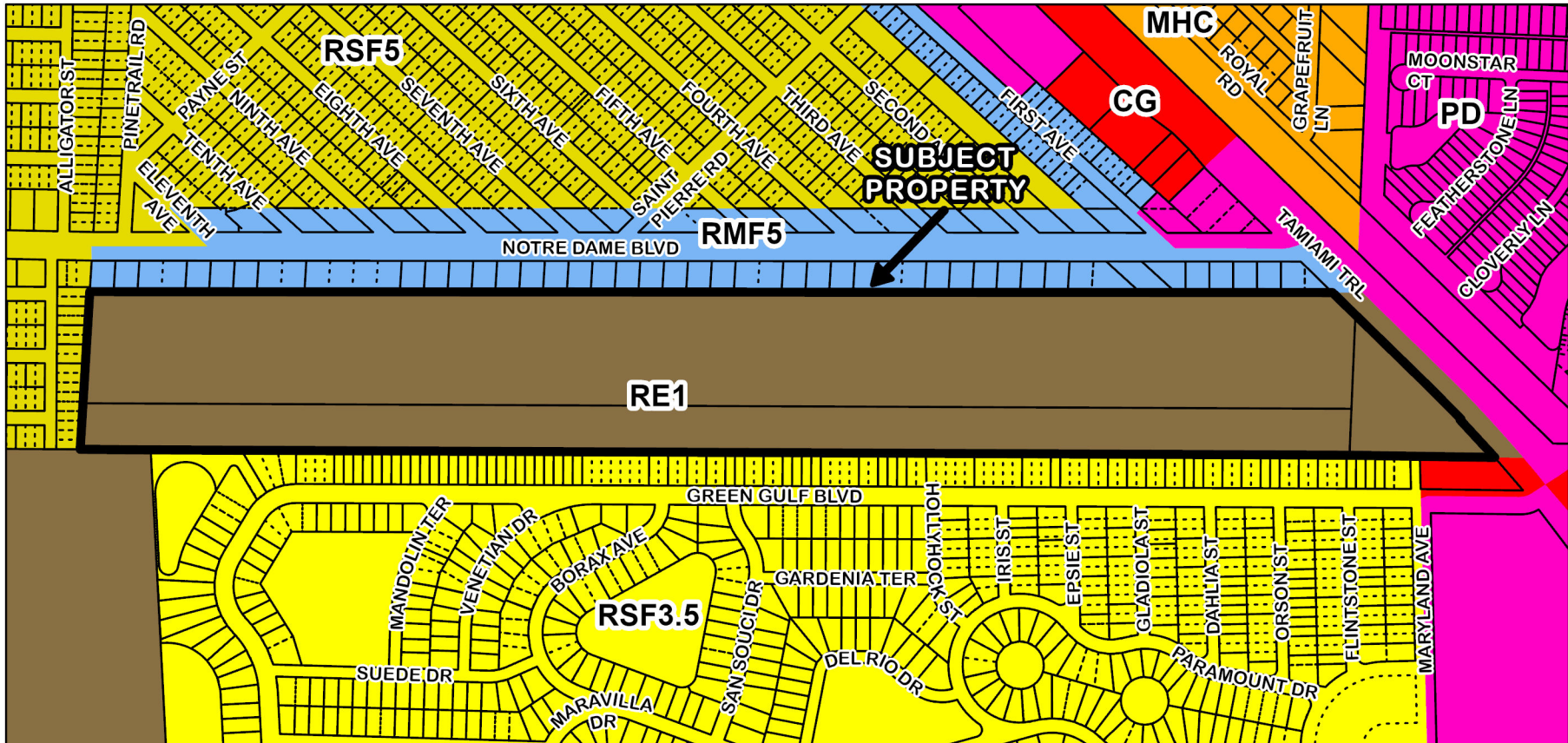
**Z-26-14 Area Image**



## Z-26-14 Framework



**Z-26-14 FLUM Designations**

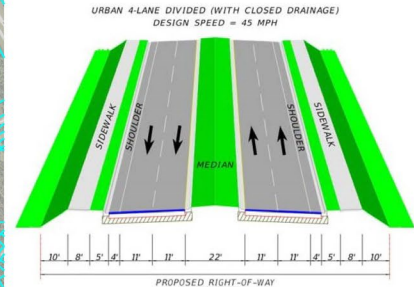
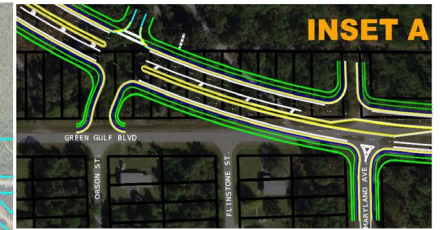
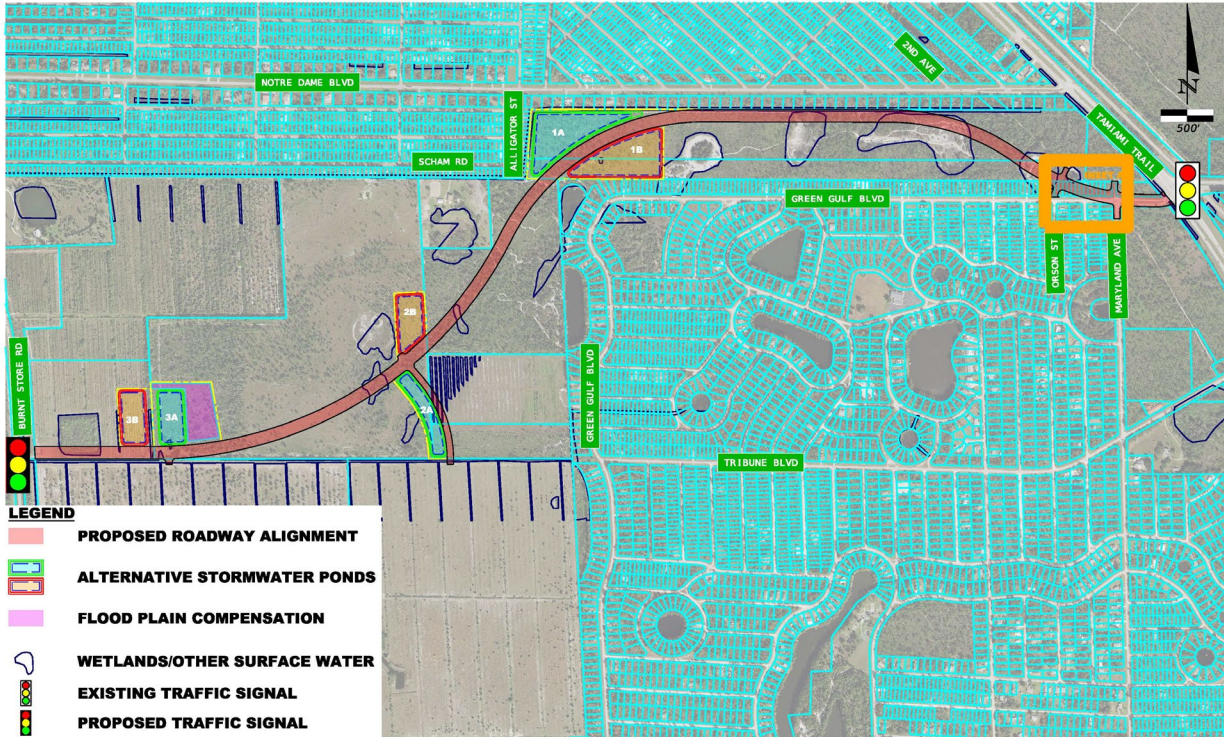


# Z-26-14 Zoning Designations



# BURNT STORE ROAD EAST-WEST CONNECTOR

# TUCKERS GRADE EXTENSION ALTERNATIVE #1



- LEGEND**
- PROPOSED ROADWAY ALIGNMENT
  - ALTERNATIVE STORMWATER PONDS
  - FLOOD PLAIN COMPENSATION
  - WETLANDS/OTHER SURFACE WATER
  - EXISTING TRAFFIC SIGNAL
  - PROPOSED TRAFFIC SIGNAL