

**AMENDMENT #1 TO
CONTRACT NO. 2022000298
BETWEEN CHARLOTTE COUNTY
AND
JOHNSON ENGINEERING, INC.
FOR
DESIGN-SIDEWALK AND DECORATIVE LIGHTING**

THIS AMENDMENT #1 to Contract No. 2022000298 is made by and between CHARLOTTE COUNTY, a political subdivision of the State of Florida, 18500 Murdock Circle, Port Charlotte, Florida 33948-1094 (hereinafter the "County") and Johnson Engineering, Inc. 2122 Johnson St. Fort Myers, FL 33901 (hereinafter the "Consultant").

WHEREAS, on or about April 11, 2023, the Parties entered into Contract No. 2022000298 (the "Contract"), to provide design services for the North Beach Road Sidewalk and Decorative Lighting Design Project (the "Project"); and

WHEREAS, the County desires to expand the Scope of Services for the Project to include a Drainage Feasibility Study and the Consultant desires to perform these additional tasks; and

WHEREAS, the Consultant has been providing, and is capable of continuing to provide, the necessary Project services.

NOW, THEREFORE, in consideration of the mutual terms and conditions, promises, covenants and payment hereinafter set forth, County and Consultant agree to amend the Contract as follows.

ARTICLE I
COMPENSATION / SERVICES

1.1. The following provisions of this Amendment #1, to include the North Beach Road Drainage Feasibility Study, are specifically added to and made a part of the Contract.

1.2. The Scope of Services for the Contract is hereby expanded to include the North Beach Road Drainage Feasibility Study services as described in Exhibit A, attached hereto.

1.3. The County shall pay Consultant for the North Beach Road Drainage Feasibility Study services described in Exhibit A in an amount not to exceed Sixty-Eight Thousand Three Hundred Dollars and no cents (\$68,300.00).

1.4. The North Beach Road Drainage Feasibility Study Schedule is set forth and adopted in accordance with Exhibit A, attached.

ARTICLE II
MISCELLANEOUS

2.1. The effective date of this Amendment #1 is the date on which it is fully executed by both Parties.

2.2. Any terms used in this Amendment #1 shall have the same meanings and definitions as they have in the Contract.

2.3. All other provisions of the Contract not in conflict with this Amendment #1 shall remain in full force and effect.

IN WITNESS WHEREOF, the parties have affixed their signatures on the dates written below.

WITNESS:

Signed By: *Krista Vigne*
Print Name: Krista Vigne
Date: 9/16/24

JOHNSON ENGINEERING, INC.

Signed by: *Christopher D. Beers*
Print Name: CHRISTOPHER D. BEERS
Title: BRANCH MANAGER
Date: 9/16/24

ATTEST:
Roger D. Eaton, Clerk of Circuit
Court and Ex-Officio Clerk to the
Board of County Commissioners

By: *Kimberly Eaton*
Deputy Clerk

BOARD OF COUNTY COMMISSIONERS OF
CHARLOTTE COUNTY, FLORIDA

By: *William G. Truex*
William G. Truex, Chairman
Date: Sept 10, 2024

APPROVED AS TO FORM
AND LEGAL SUFFICIENCY:

By: *Janette S. Knowlton*
Janette S. Knowlton, County Attorney
LR24-0615 *JS*

Exhibits:
Exhibit A – North Beach Drainage Feasibility Study Scope of Services

Consultant = Johnson Engineering, Inc.

County = Charlotte County

Subconsultant = Axis Engineering

CCPW = Charlotte County Public Works

Lat: 26.937960 Long: -82.368293

STR: 01-41-19

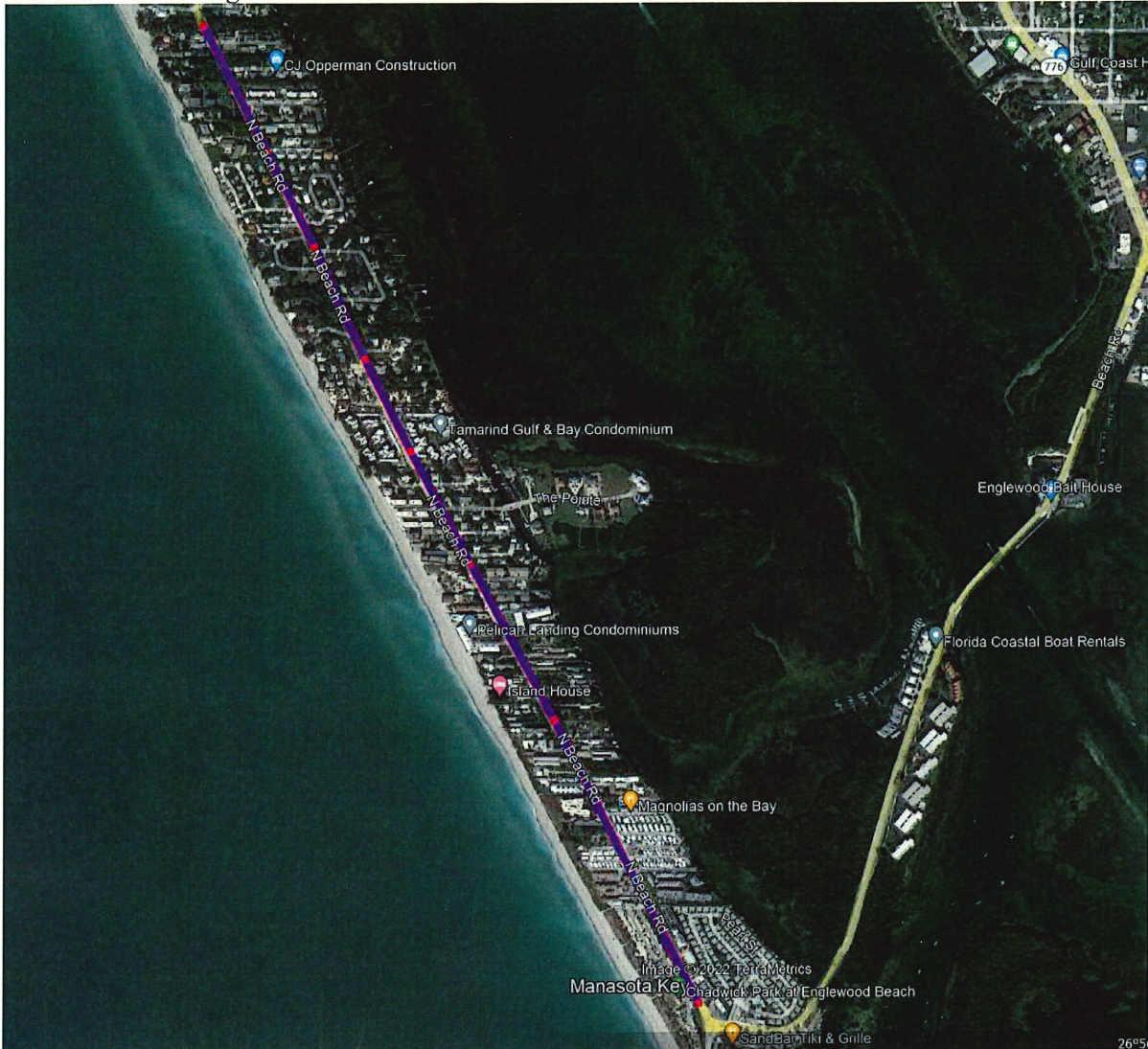


Figure 1: North Beach Road Project limits (magenta line)

DRAINAGE FEASIBILITY STUDY

SECTION I PROJECT DESCRIPTION AND LIMITS

- This CONSULTANT* is retained under Contract 2022000298 (Design – Sidewalk and Decorative Lighting – North Beach Road) executed on April 12, 2023.
- After the January 30, 2024, Manasota Key MSBU public meeting, it was determined and directed by the County to provide a change order for the Feasibility Drainage Study to investigate drainage the possible feasibility of adding a drainage system to this North Beach Road project limits (see Figure 1)
- The consultant and subconsultant (consultants) shall evaluate feasible options for possible drainage improvements along North Beach Road in this study

- d) The study will focus on identifying opportunities for improvements to assist to alleviate, mitigate, and minimize flooding due to the existing low elevation of the roadway and potential sidewalk improvements
- e) There are no County owned properties adjacent to this corridor for drainage basins and outfalls, the consultants shall provide a task for property acquisition for these improvements
- f) The previous R/W and topographic survey performed for the sidewalk project will be utilized for this study, but note there is no private property survey included in this study
- g) This study will not have a task for a Southwest Florida Water Management District (SWFWMD) Environmental Resource Permitting (ERP)
- h) This study does not include any coordination for existing utility (public or private) coordination and relocation
- i) The County will need to provide the Level of Service (LOS), for this feasibility study to provide for the corridor
- j) Items specifically excluded (not a complete list): additional conventional survey (topographic, property, easements, etc.), subsurface utility survey/engineering (SUE), geotechnical investigation, environmental protected species survey (PSS), jurisdictional wetland or other surface water (OSW) determination, water quality assessment/analysis, nutrient loading criteria analysis, any study/analysis not specifically mentioned

*Within this Exhibit the term CONSULTANT includes the entire CONSULTANT team with all subconsultants, and the task could be fully completed by a subconsultant.

SECTION II APPLICABLE STANDARDS

All plans and designs are to be prepared with English values. The latest editions, unless noted otherwise at the time this agreement is executed, of the following manuals and guidelines shall be used as resources and reference materials in the performance of the CONSULTANT's work:

1. Southwest Florida Water Management District (SWFWMD), Environmental Resource Permitting Information Manual
2. AASHTO Roadside Design Guide
3. MUTCD
4. Charlotte County Standards

TASK 1 DATA COLLECTION

The CONSULTANT will conduct mapping and data collection to include reviewing previously completed County drainage studies and reports provided for work completed between 2013-2023 and provided by the County. The CONSULTANT will also review available public records for dedicated easements and rights-of-way to identify potential opportunities for drainage improvements. This research will be overlaid into maps and supplemented by the plans for Contract 2022000298 to provide a visual tool for evaluation.

TASK 2 ASSESSMENT

The R/W as-builts provided by the County and the topographic survey from the Contract 2022000298 shall be the primary tools to evaluate the current system. The CONSULTANT shall evaluate and assess the existing drainage system and flood hazard conditions within the project corridor. Additional field collection may be required to confirm or identify existing conditions.

- A. Conducting a Field Survey, the CONSULTANT can:
 - i. Visually acquaint the CONSULTANT team with conditions and constraints of the site, such as obtaining where the R/W existing drainage may have spillover/overtopping evidence onto private properties

- ii. Identify private off-R/W ponds, basins, and other stormwater retention areas which may affect discharge rates
- iii. Review existing drainage features within the County R/W to assess current condition and performance
- iv. Review potential outlet facilities and downstream conveyances for performance, adequacy, stability, and condition
- v. Identify sediment-sensitive private property areas such as basins, ponds, and channels
- vi. Review contributing private property watershed characteristics
- vii. Identify new or planned construction or proposed development
- viii. Consult available government GIS shapefiles or references to locate known wetlands and other environmentally sensitive areas

TASK 3 ANALYSIS

After field reconnaissance is completed, the CONSULTANT will develop a feasibility drainage study. The study will identify existing stormwater opportunities and constraints within the project corridor. The study will provide recommendations which may include proposed crossings, possible preliminary layout of R/W drainage structures, off-site basins, if needed-potential property for acquisition, outfall locations, and other stormwater management elements which may be needed.

A recommendation will also be made for the retention and/or extension of the existing structures, supplementation of the existing structure(s) to provide additional conveyance, or total replacement of the structure(s). The preliminary recommendations will be used to help develop an engineer’s estimate of probable costs (EOPC). There will be a cursory discussion of the extent of natural and environmental impacts of the recommendations. If public involvement and meeting(s) are required for the project, graphics and documents of the recommendations will be developed.

TASK 4 PUBLIC MEETING(s)

There may be a need for public meeting(s) to be attended by Consultant. This may include MSBU/MSTU meetings, BCC, stakeholders, etc.

- 4.1 Graphics and Documents: Consultant shall provide PDFs of the plans for any County meetings.
- 4.2 Presentation: Consultant shall be on call for public meetings, if needed.

CONTRACT PRICING

Task #	Description	Terms	Fee
1	Data Collection	NTE	\$18,400
2	Assessment	NTE	\$19,800
3	Analysis	NTE	\$26,500
4	Public Meetings (\$900/Mtg assume up to 4 meetings)	Each	\$3,600
Total			\$68,300

PRELIMINARY ESTIMATED SCHEDULE (Subject to Change):

Item	Description	Estimated Start Date	Target Delivery Date	Estimated Days
1	Notice to Proceed	8/1/24	8/1/24	0
2	Task 1: Data Collection	8/1/24	8/31/24	30
3	Task 2: Assessment	8/31/24	10/15/24	45
4	Task 3 Analysis: Draft Study	10/15/24	12/14/24	60
5	Task 3: Draft Study Submittal	12/14/24	12/14/24	0
6	Task 3: Draft Study Review	12/14/24	12/29/24	15
7	Task 3: Draft Study Revisions	12/29/24	1/18/25	20
8	Task 3: Study Final Submittal	1/18/25	1/18/25	0
	Public Meeting(s)	TBD		
			Total Days	170
* No Permitting is involved in this Drainage Feasibility Study				