



Charlotte County

Commission Chambers,
Room 119
18500 Murdock Circle
Port Charlotte, FL 33948
CharlotteCountyFL.gov

Agenda Item Summary

File #: 2026-7960

Agenda Date: 2/25/2026

Agenda Item #: 3.

DEPARTMENT MAKING REQUEST

Budget & Admin Services

Title

23-485, Approve Change Order # 9, East Port Water Reclamation Facility Expansion (Utilities)

REQUESTED MOTION/ACTION

Recommended Action:

Approve Change Order #9 to Request for Bids #23-485, East Port Water Reclamation Facility Expansion, with Poole and Kent Company of Florida, of Port Charlotte, Florida, in the amount of \$138,741.07. This project is for the upgrade of the East Port Water Reclamation Facility.

Budgeted Action:

No action needed. Budgeted in the Capital Improvement Project "East Port WRF Expansion" as approved in the FY26 budget process. Funding will be supplied from the Utility Wastewater Connection Fee Fund.

BACKGROUND (Why is this Action Necessary, and What Action will be accomplished)

Background:

On November 28, 2023, the Board approved the award of Request for Bids #23-485, East Port Water Reclamation Facility Expansion, with Poole and Kent Company of Florida, of Port Charlotte, Florida in the amount of \$106,188,600.

- Administrative Change Order 1 was approved on 10-1-2024 in the amount of \$78,390.70.
- Administrative Change Order 2 was approved on 1-31-2025 in the amount of \$171,177.04.
- Administrative Change Order 3 was approved on 3-28-2025 in the amount of (-107,604.73).
- Administrative Change Order 4 was approved on 5-23-2025 in the amount of \$174,921.90.
- Administrative Change Order 5 was approved on 6-13-2025 in the amount of \$134,811.70.
- Change Order 6 was approved on 7-22-2025 in the amount of \$510,557.43.
- Administrative Change Order 7 was approved on 7-30-2025 in the amount of \$94,634.42.
- Change Order 8 was approved on 10-14-2025 in the amount of \$379,225.67.

A brief description of Change Orders 1-8 is attached.

Change Order 9 is being requested due to necessary modifications that are critical for the successful operation of the approved design.

Change Order 9.1 - Additional Coatings at Advanced Water Treatment (AWT) Structure: An Owner/Engineer of Record-directed revision to the AWT Interior coating elevations to improve long-term corrosion protection based on future operating water levels. The original contract required coating only to Elevation 26.0; however, after consulting with Johnson Engineering, CCU requested revised elevations of 24.0 In the Re-aeration Chamber and 24.5 in the Anoxic Tanks following

engineering and operations review. This request resulted in cutting cost over 1/3. The change increases coating quantities and cost but does not impact Contract Time. \$99,958.10

Change Order 9.2 - Concrete Pipe Supports at Internal Recirculation (IR) Pump Station Piping: After reviewing a Request for Information, regarding the required pipe supports for the IR pumpstation, produced by Poole and Kent, CCU requested that the concrete pipe supports for this area would mirror the existing Internal Recirculation Ration pump pads. This change reflects an Owner-requested update to the originally planned support layout. This is both for uniformity and functionality. \$17,513.27

Change Order 9.3 - Supply and Install Additional Combination Starters for the Sample Pumps: After an electrical meeting with Jones Edmunds on 10/9/25 Poole and Kent produced Request for Information which stated Poole & Kent has submitted this technical data and Proposed Change Order - Proposal for Additional AWT Combination Starters. Due to the size of the 3 (three) designed 480-volt 3 phase sample pumps it was discovered that the pumps would require additional combination starters to operate. \$12,799.74

- > Two pumps are located at the newly constructed AWT's north and south chambers.
- > One pump is located at the newly constructed chlorine contact chamber.

Change Order 9.4 - A Time and Material Change Order to Excavate, Expose, Investigate, Remove and Relocate the Existing Conduits South the HWSB for the New Installation of 36" and 42" Piping: During excavation for a 48-Inch ductile Iron pipe, unknown conduits were encountered along the alignment. The contractor then submitted a Request for Information which resulted in a Proposed Change Order. To proceed. the conduits were Identified and either removed or rerouted under a time and materials change order. \$8,469.96

These changes are essential not just for compliance, but for delivering a high-quality, operationally sound project.

Therefore, it is requested that the Board of County Commissioners approve Change Order #9 to Request for Bids #23-485, East Port Water Reclamation Facility Expansion, with Poole and Kent Company of Florida, of Port Charlotte, Florida, in the amount of \$138,741.07 for a revised total of \$107,763,455.20.

**CCU Change Order Request
East Port WRF Expansion - Poole and Kent
Change Order #9**

Date:	1/23/2026	Original Contract Time:	900
Contract Number:	2023000485	Additional Time:	0
Original Contract Price:	\$106,188,600.00	Previous Changes:	276
Previous Change Orders:	\$1,436,114.13	New Contract Time:	1,176
This Change:	\$138,741.07		
Revised Contract Amount:	\$107,763,455.20		
Contract Start Date:	1/22/2024		
Current Completion Date:	4/12/2027		
New Completion Date:	4/12/2027		
Purchase Order Number:	2024000830		

Add or Deduct	Bid Item #	Code	Want or Need	DESCRIPTION	UNIT	Qty.	Unit Price	Extended Price
			NEED	ADDITIONAL COATINGS AT AWT STRUCTURE				
Add	CO-9.1 (New) PCO 45B	3 Design modification	Justification	PCO #45B addresses RFI #136 response from EOR. An Owner/EOR-directed revision to the AWT Interior coating elevations to improve long-term corrosion protection based on future operating water levels. The original contract required coating only to Elevation 26.0; however, after consulting with JE, CCU requested revised elevations of 24.0 in the Re-aeration Chamber and 24.5 in the Anoxic Tanks following engineering and operations review. This request resulted in cutting cost over 1/3. The change increases coating quantities and cost but does not impact Contract Time.	LS	1	\$99,958.10	\$99,958.10
			WANT	CONCRETE PIPE SUPPORTS AT IR PUMP STATION PIPING				
Add	CO-9.2 (New) PCO 46B	5 Owner Preference	Justification	After reviewing RFI #141, regarding the required pipe supports for the IR pump station, produced by Poole and Kent, CCU requested that the concrete pipe supports for this area would mirror the existing IRR pump pads. This change reflects an Owner-requested update to the originally planned support layout. This is both for uniformity and functionality.	LS	1	\$17,513.27	\$17,513.27
			NEED	SUPPLY AND INSTALL ADDITIONAL COMBINATION STARTERS FOR THE SAMPLE PUMPS				
Add	CO-9.3 (New) PCO49	3 Design modification	Justification	After an electrical meeting with Jones Edmunds 10/9/25 Poole and Kent produced RFI 167 which stated Poole & Kent has submitted this technical data and PCO #49 – Proposal for Additional AWT Combination Starters. Due to the size of the 3 (three) designed 480-volt 3 phase sample pumps it was discovered that the pumps would require additional combination starters to operate. > Two pumps are located at the newly constructed AWT's north and south chambers. > One pump is located at the newly constructed chlorine contact chamber.	LS	1	\$12,799.74	\$12,799.74
			NEED	A TIME AND MATERIAL CO TO EXCAVATE, EXPOSE, INVESTIGATE, REMOVE AND RELOCATE THE EXISTING CONDUITS SOUTH THE HWSB FOR THE NEW INSTALLATION OF 36" AND 42" PIPING				
Add	CO-9.4 (New) PCO 50	2 found condition	Justification	During excavation for a 48-inch ductile iron pipe, unknown conduits were encountered along the alignment. The contractor then submitted RFI #161 which resulted in PCO #50. To proceed, the conduits were identified and either removed or rerouted under a time and materials change order.	LS	1	\$8,469.96	\$8,469.96
TOTAL CHANGE ORDER 9								\$138,741.07

APPROVALS:  **01.27.2026**

Gregg S. Fruecht, Jones Edmunds Engineering date
Hendrik Dolleman 1/26/26

Hendrik Dolleman, Project Manager date
Hendrik Dolleman 1/28/26

Jeremy Frost, Operations Manager date
Jeremy Frost 1/28/26

Clair Jubb, Interim Utilities Director date
Clair Jubb 1/28/26

PCO	Profit	Overhead
3A	\$1,978.08	\$941.94
4	\$4,692.52	\$2,234.53
6	\$353.01	\$168.10
8	\$2,676.23	\$1,274.39
12	\$843.68	\$401.75
14	\$387.79	\$184.52
18	\$11,251.41	\$5,357.81
20	\$124.86	\$59.46
5A	\$1,381.48	\$657.85
9A	\$1,512.82	\$720.39
16A	\$589.84	\$280.88
19	\$188.16	\$89.60
21	\$395.45	\$188.30
22	\$0.00	\$0.00
24	\$0.00	\$0.00
26	\$2,547.24	\$1,212.97
28	\$0.00	\$0.00
30	\$78,293.49	\$3,728.25
32	\$7,929.38	\$3,775.90
31	\$276.89	\$131.85
33	\$7,854.67	\$3,740.32
34	\$0.00	\$0.00
35	\$0.00	\$0.00
36	\$0.00	\$0.00
37A	\$32,050.83	\$15,262.30
38A	\$8,434.44	\$4,016.40
39	\$6,970.68	\$3,319.37
40A	\$166.82	\$79.44
41	\$1,066.01	\$507.63
42	\$620.10	\$295.29
44	\$5,862.62	\$2,791.72
45B	\$9,087.10	\$0.00
46B	\$1,592.12	\$758.00
47	\$401.52	\$191.20
48	\$33,397.56	\$15,903.60
49	\$1,163.61	\$554.10
50	\$770.00	\$366.67

	Profit	Overhead
Total	\$224,860.41	\$69,194.53
original contract	\$106,188,600.00	
Total P&OH	\$294,054.94	

The cumulative Pricing Change Orders (PCOs) include a total profit of \$224,860.41, overhead of \$69,194.53, resulting in a combined total P&OH amount of \$294,054.94. The profit and overhead rates applied are consistent with contract provisions and were calculated uniformly across all applicable PCOs. This summary reflects the complete and accurate aggregation of all approved and pending PCOs associated with the referenced scope of work.

RFI #136 / PCO #45 (45B) – AWT Interior Coating Elevation Revision

May 14, 2025, Poole & Kent (P&K) submitted **RFI #136** requesting clarification regarding the required interior coating elevation for the new AWT structure.

June 3, 2025, Jones Edmunds (JE) issued a draft response to RFI #136 for Charlotte County Utilities (CCU) review. The draft response stated that interior tank coating was to extend from the **Top of Wall (TOW) at Elevation 29.00** downward **six (6) feet to Elevation 23.00 NAVD88**, noting that this elevation would accommodate and transect the High-Water Level (HWL) and extend below all weir openings and partition walls. CCU approved the draft response, and JE issued it to the Contractor.

June 25, 2025, CCU requested clarification from JE regarding the basis for the six-foot coating extension identified in the RFI response.

June 26, 2025, JE responded via email stating that there are no regulatory requirements governing coating elevations and that coatings are an **Owner-selected protective and maintenance measure**. JE explained that the selected elevation was determined by evaluating fluctuations in the vessel's High-Water Level and extending the coating below that level to prevent exposure of uncoated concrete or metal surfaces at the water-atmosphere interface, which is a typical approach for minimizing corrosion.

Also **June 26, 2025**, the CCU Project Manager solicited internal input from CCU operations staff regarding whether the plant preferred to extend the coating **two (2) feet or four (4) feet** below the water level. The Chief Operator responded that extending the coating **four (4) feet below the water level** would be sufficient and that further extension was unnecessary due to the added cost.

June 29, 2025, P&K submitted **PCO #45**, proposing to add approximately **three (3) additional feet of coating** to all interior walls of the new AWT structure. P&K noted that Specification Section 09900 required coating only to **Elevation 26.00**, while the RFI response directed coating to **Elevation 23.00**. PCO #45 requested a **lump sum increase of \$178,426.78 with no impact to Contract Time**.

July 2, 2025, JE provided CCU with additional technical clarification regarding coating elevations. JE explained that the original recommendation to extend coating six (6) feet below the Top of Wall was based on anticipated future operating conditions. While the Anoxic Tank and Reaeration Zones may initially experience lower water levels due to partial basin utilization at reduced flows, long-term operational conditions—anticipated approximately five (5) years into operation or as flows approach 9 MGD—would result in minimum water levels approaching **Elevation 23.3**, consistent with clarifier operating levels. JE further noted that, to ensure protection at the water-atmosphere interface while reducing cost, an alternative approach would be to extend coatings to **Elevation 24.0 in the Reaeration Chamber** and **Elevation 24.5 in the Anoxic Tanks**, which would significantly reduce the coating quantity and associated cost while still achieving the intended corrosion protection.

July 2, 2025, the CCU Project Manager distributed JE's recommendation internally for review and comment.

July 3, 2025, CCU formally directed JE to proceed with coating elevations of **Elevation 24.0 in the Reaeration Chamber** and **Elevation 24.5 in the Anoxic Tanks**.

October 8, 2025, JE issued written direction to P&K to proceed with the revised coating elevations and to adjust pricing accordingly for **PCO #45**.

October 28, 2025, P&K submitted **PCO #45A**, revising the proposal to reflect the approved elevations of **24.0 (Reaeration Chamber)** and **24.5 (Anoxic Tanks)**. PCO #45A requested a **lump sum increase of \$104,956.01 with no increase to Contract Time**.

October 28, 2025, the CCU Project Manager forwarded **PCO #45A** to CCU Operations Managers for review.

November 3, 2025, Operations Management responded in support of the additional coating, noting that the improvement would extend the service life of the structure and reduce long-term maintenance costs. Operations further requested that any presentation include a **Present Worth Analysis** demonstrating future maintenance costs avoided by approving the change order.

November 3, 2025, P&K inquired regarding the status of approval due to imminent blasting and coating activities and requested confirmation of the required coating elevation to avoid rework.

November 4, 2025, JE issued approval of **PCO #45A**, authorizing the revised coating scope.

December 23, 2025, CCU PM discussed Associated cost with P&K PM asking for a reduction.

On **December 30, 2025**, P&K submitted **PCO #45B**, revising pricing for the previously approved coating elevations of **Elevation 24.0 in the Reaeration Chamber** and **Elevation 24.5 in the Anoxic Tanks**. PCO #45B proposed incorporation of the work, as clarified in JE's October 8, 2025, directive, for a **lump sum increase of \$99,958.10 with zero (0) calendar days** added to the Contract Time.

On **January 4, 2026**, the CCU Project Manager transmitted **PCO #45B** to CCU Management for review and comment.

Also on **January 4, 2026**, CCU review comments requested that the phrase "**reserve the right for additional fees if a time extension is needed after this approval**" be revised to "**reserve the right to request**".

On **January 8, 2026**, JE requested that P&K revise **PCO #45B** to incorporate the requested language modification.

On **January 9, 2026**, P&K resubmitted the revised **PCO #45B** including the requested language for further review.

Also on **January 9, 2026**, CCU transmitted approval of the revised wording to JE and requested that JE expedite final review and response so that the package could be completed and submitted for CCU Management review prior to upload to **Legistar**.

January 10, 2026, JE replied The Contractor is still including language that is not concise and potentially “open-ended” asking for a revision.

January 12, 2026, CCU PM requested changes to verbiage on **PCO 45B**.

January 12, 2026, CCU PM received **PCO 45B** back with the requested language removed, the PCO was then sent back to JE for their review.

January 13, 2026 CCU received approval from JE for **PCO 45B** and added it to the PCO packet.

Basis of Claim Entitlement

PCO #45 (45B) represents an **Owner- and Engineer-directed design modification** to the AWT interior coating system. The original Contract Documents required coating only to **Elevation 26.00**; subsequent RFI responses and Owner decisions revised the required coating elevations to address long-term operational conditions and corrosion protection objectives: The revised elevations were selected by CCU based on engineering recommendations, operational input, and cost considerations. P&K complied with all directives, submitted multiple pricing iterations at the Owner’s request, and incorporated the approved scope without impact to Contract Time. The costs associated with **PCO #45B** are reasonable, necessary, and directly attributable to the approved design change.



Poole & Kent

Contractors
An EMCOR Company

Poole & Kent Company of Florida
1781 N.W. North River Drive
Miami, FL 33125
P.O. Box 420556
Miami, FL 33242

Phone: 305.325.1930
Fax: 305.324.0522

January 9, 2026

Charlotte County Utilities
25550 Harbor View Rd
Port Charlotte, FL 33980

APPROVED

Gregg Fruecht
Jones Edmunds
01.13.2026

Attn: Hendrik Dolleman

Re: **Eastport WRF MGD Expansion Project**
Contract Number: 18-0006
Poole & Kent Project No. 24801

Subject: **PCO 45- Additional Coatings at AWT Structure per Revised email to RFI 136 Response**
P&K PCO No. 45B

Dear Mr. Fruecht,

Poole & Kent prepared a cost proposal add an additional to EL 24 in Reaeration Chamber and 24.5 and Anoxic tank of the new AWT Structure in the revised coating response in the email from 10/8/25. We propose to incorporate the work, as clarified herein, for a lump sum increase to our contract in the amount of \$99,958.10 and (0) calendar days to the contract completion date.

This proposal includes the following clarifications.

1. This proposal is valid for a period of 21 days, after which it is void at the option of Poole & Kent.
2. Pricing is based on normal working hours and does not include any overtime.
3. Price includes only the work specifically described in our proposal and the attached subcontractor proposals. Any additional work required for this change will be quoted as it becomes known.
4. For more detailed information, please see the attached submittal and breakdown from Poole and Kent.

Please notify P&K as soon as possible if we are to proceed with the above changes. Should you have any questions, please do not hesitate to call.

Very truly yours,
POOLE & KENT COMPANY OF FLORIDA

Mike Lauer

Michael Lauer
Project Manager



PO Box 895
Lehigh Acres, Florida 33970
239-303-3250 Fax 239-303-3252

October 15, 2025

Poole and Kent
ATTN: Mike Lauer

**RE: Eastport WRF
Additional Interior Coatings at AWT**

Dear Sirs:

Mike here is our proposal to Blast, prep, resurface and apply system 32 to elevations called out below.

Scope

- 1 Blast to ICRI CSP 3-5
- 2 Resurface with Duraplate 2300 per approved Submittals
- 3 Coat with system 32 per approved submittal

Pricing

Base Bid		
Adtl footage in Reaeration Chamber from el 26.00 to 24.00		
Adtl footage in Anoxic Tanks from el 26.00 to 24.50		
	Price	\$ 90,871
	Unit Price	\$ 16,500
Unit Price Breakdown		
1 Labor		\$32,124
2 Material		\$36,158
3 Equipment		\$5,372
4 Bond and Insurances		\$5,022
	Subtotal	\$78,676
10% Overhead		\$7,868
	Subtotal	\$86,544
5% Profit		\$4,327
	Total	\$90,871

Should you have any questions or require additional information, please contact me.

Sincerely,
CYPRESS CONSTRUCTION & COATINGS, INC.

Jason Haney
Vice President
NACE Coating Inspector # 69802



REQUEST FOR INFORMATION (RFI) No. 136

OWNER/CLIENT: Charlotte County Utilities PROJECT NO.: 18-0006 PROJECT MANAGER: Hendrik Dolleman

ENGINEER: Jones Edmunds & Associates, Inc. PROJECT NO.: 03405-012-09 PROJECT MANAGER: Tom Friedrich

CONTRACTOR: Poole & Kent Company of FL PROJECT NO.: 24801 PROJECT MANAGER: Mike Lauer

PROJECT NAME: Charlotte County Utilities East Port Water Reclamation Facility (WRF) 9 MGD Expansion

TO: Gregg Fruecht DATE: 5/14/2025

RE: CONTRACT DOCUMENT REFERENCE(S): 09900-033

FROM: Poole & Kent

DESCRIPTION OF RFI:

INFORMATION CLARIFICATION INTERPRETATION

is Requested for the Items Described Below or in the Attached:

Please see the attached RFI #136 regarding the AWT internal coating dimensions.

RESPONSE REQUESTED BY: 5/14/2025 Zac Scales
DATE SIGNATURE

TO: Mike Lauer DATE: 06.02.2025

FROM: Gregg Fruecht / Jones Edmunds

RESPONSE TO RFI NO.: 136

Our Response to your Request for INFORMATION CLARIFICATION INTERPRETATION

is Described Below or in the Attached: The interior tank coating shall extend from the TOW of 29.00-ft, 6 feet downward to elevation 23.00 NAVD88. This dimension will accommodate and transect through the HWL. Per Sheet M35 and S49 this would extend below any weir opening and a foot down from the top of any 12-foot tall partition walls.

ATTACHMENT: _____


SIGNATURE



East Port WRF MGD Expansion
Charlott County Utilities
PK Job 24801
3100 Loveland Blvd
Punta Gorda, FL 33980

Contractor Request for Information

To: Gregg Fruecht
Attn: Jones Edmunds

RFI No.: 136
Date: 5/14/2025

Project: East Port WRF MGD Expansion

Contractor: The Poole & Kent Company of Florida

Urgent Response Requested
Yes No

RFI TITLE: AWT Internal Coating Dimensions
Dwg Reference: _____
Spec. Reference: 09900-33

Request / Question

Specification 09900 provides a coating schedule and depicts the elevations at which the coating for the AWT structure is to be applied. Please confirm the Top of Wall to elevation 26.00 is correct for the AWT internal coating system.

By: Zac Scales Date: 05/14/25
Poole and Kent

Response

By: _____ Date: _____
SC

RFI #141 / PCO #46 (46B) – IR Pump Station Suction Header Pipe Supports

RFI #141 / PCO #46 (46B) – IR Pump Station Suction Header Pipe Supports

June 19, 2025, Poole & Kent (P&K) submitted **RFI #141** after reviewing Contract Drawing **M32** for the IR Pump Station. P&K advised that the drawing did not indicate the quantity or locations of pipe supports for the suction piping. Specifically, P&K noted that the 20-inch suction piping was shown extending approximately five (5) feet from the north wall of the Oxidation Ditch without any depicted pipe supports or associated concrete foundations to support the piping. P&K requested clarification and direction.

July 16, 2025, Jones Edmunds (JE) issued a fully executed response to **RFI #141**, providing a marked-up drawing and reference photos and directing P&K to furnish and install pipe supports to match the existing type, size, and material in accordance with **Detail Drawings M-75 and M-76**.

July 30, 2025, P&K acknowledged via email that the Contract Documents contained specification clauses requiring the Contractor to address certain constructability elements when design details are incomplete. P&K further acknowledged that, under those provisions, standard pipe supports were considered part of the Contractor's scope.

August 1, 2025, the **Charlotte County Utilities (CCU) Project Manager** responded, advising that CCU requested submission of a **Potential Change Order (PCO)** for **concrete pipe supports**, stating that this information was required in order for CCU to make an informed decision regarding the preferred support type.

August 4, 2025, P&K submitted **PCO #46**, proposing to utilize **concrete supports** for nine (9) 20-inch pipe supports on the IR Pump Station suction header **in lieu of metal supports**. **PCO #46** proposed a **lump sum increase of \$17,385.22** with **zero (0) additional calendar days** to the Contract Time.

Also **August 4, 2025**, the CCU Project Manager solicited input from plant staff, stating that the Contractor would furnish **metal stanchion-type pipe supports at no additional cost**, and that the requested PCO was solely to evaluate the cost associated with the County's potential preference for **concrete cradle-type supports**.

August 5, 2025, JE confirmed receipt of **PCO #46** for review.

September 10, 2025, JE returned its review comments, requesting a **revised cost proposal** consistent with the County's stated preferences and directing P&K to submit an updated PCO identified as **PCO #46A**.

September 26, 2025, P&K submitted **PCO #46B**, revising the proposal to reflect the County's preferences and proposing a **lump sum increase of \$17,513.27** with **no increase to Contract Time**.

October 18, 2025, JE completed its review of **PCO #46B** and issued a response stating the proposal was **"Approved."**

RFI #141 / PCO #46 (46B) – IR Pump Station Suction Header Pipe Supports

Basis of Claim Entitlement

While standard metal pipe supports were acknowledged as part of the Contractor's base scope, **PCO #46 (46B)** represents a **County-directed design preference and modification**, substituting concrete cradle-type supports in lieu of metal stanchion supports. This change was requested to allow the County to evaluate and select its preferred support type and was not required by the original Contract Documents. P&K complied with Owner and Engineer direction, provided multiple cost proposals at the County's request, and incorporated the approved configuration without impact to Contract Time. The costs reflected in **PCO #46B** are reasonable, necessary, and directly attributable to the approved design modification.



REQUEST FOR INFORMATION (RFI) No. 141

OWNER/CLIENT: Charlotte County Utilities PROJECT NO.: 18-0006 PROJECT MANAGER: Hendrik Dolleman

ENGINEER: Jones Edmunds & Associates, Inc. PROJECT NO.: 03405-012-09 PROJECT MANAGER: Tom Friedrich

CONTRACTOR: Poole & Kent Company of FL PROJECT NO.: 24801 PROJECT MANAGER: Mike Lauer

PROJECT NAME: Charlotte County Utilities East Port Water Reclamation Facility (WRF) 9 MGD Expansion

TO: Gregg Fruecht DATE: 6/19/2025

RE: CONTRACT DOCUMENT REFERENCE(S): M32

FROM: Poole & Kent

DESCRIPTION OF RFI:

INFORMATION CLARIFICATION INTERPRETATION

is Requested for the Items Described Below or in the Attached:

Please see the attached RFI regarding Pipe Supports needed at the IR Pump Station

RESPONSE REQUESTED BY: 6/19/2025 Zac Scales
DATE SIGNATURE

TO: Mike Lauer DATE: 07.16.2025

FROM: Gregg Fruecht

RESPONSE TO RFI NO.: 141

Our Response to your Request for INFORMATION CLARIFICATION INTERPRETATION

is Described Below or in the Attached: See Engineer's comments PDF page 3 and attachments noted below.

ATTACHMENT: Sheet M-32, photos

SIGNATURE



East Port WRF MGD Expansion
Charlott County Utilities
PK Job 24801
3100 Loveland Blvd
Punta Gorda, FL 33980

Contractor Request for Information

To: Gregg Fruecht
Attn: Jones Edmunds

RFI No.: 141
Date: 6/19/2025

Project: East Port WRF MGD Expansion

Contractor: The Poole & Kent Company of Florida

Urgent Response Requested
Yes No

RFI TITLE: IR Pump Station Pipe Supports
Dwg Reference: M32
Spec. Reference: _____

Request / Question

Upon review of contract drawing M32 for the IR pump station, we noticed this drawing does not indicate the quantity or locations of pipe supports. Additionally, the 20" suction piping shown is approximately 5 feet for the north wall of the Oxidation Ditch, but there are no pipe supports depicted or associated concrete base to support this piping. Please review and advise on the quantity and placement locations for the necessary pipe supports. Once received, P&K will prepare a cost estimate to supply and install this material accordingly.

By: Zac Scales
Poole and Kent

Date: 06/19/25

Response

By: _____
SC

Date: _____

ENGINEER'S RFI RESPONSE

JONES EDMUNDS PROJECT NO.: 03405-012-09 / CCU 18-0006 RFI DESCRIPTION: IR Pump Station Pipe Supports

JONES EDMUNDS RFI NO.: 141 CONTRACTOR RFI NO.: 141

DATE RECEIVED: 07.10.2025 DATE REVIEWED: 07.16.2025 REVIEWED BY: Gregg Fruecht

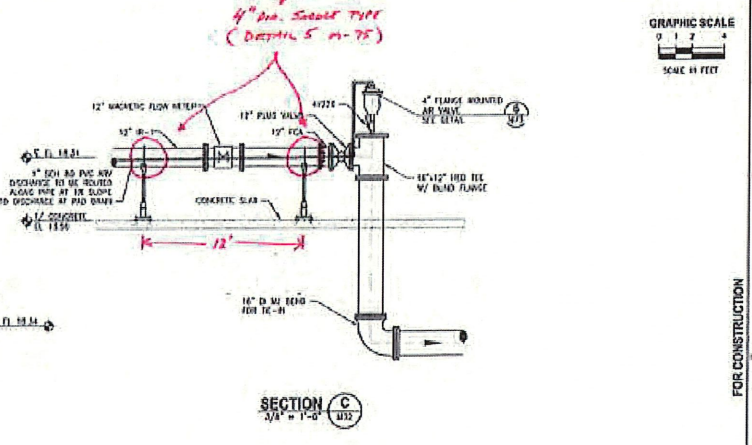
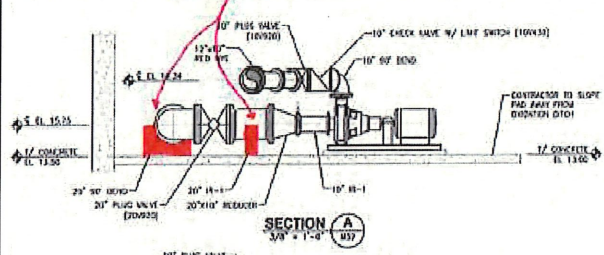
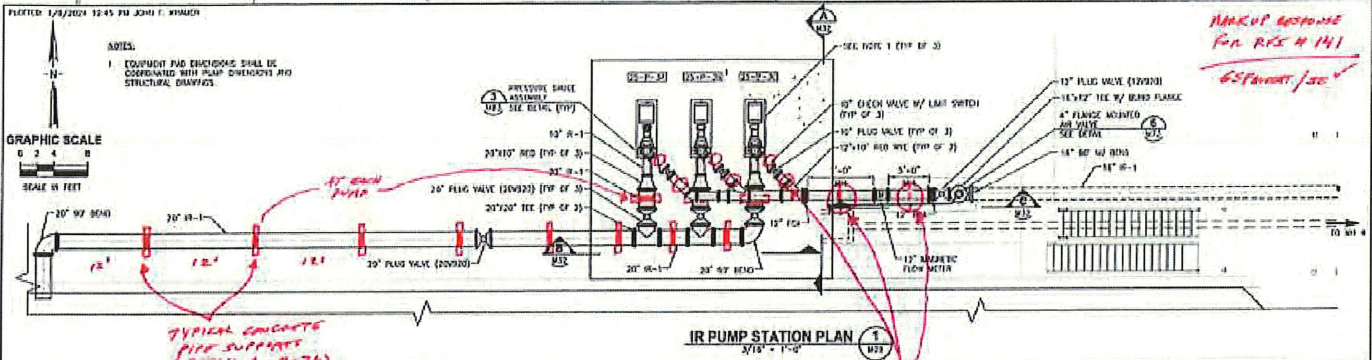
RFI RESPONSE

1. Please review the attached markup drawing and photos. Furnish and install to match the existing match type, size, and material as per the detail drawings M-75 and M-76.

END OF RESPONSE

PROJECT: 12/20/2024 12:45 PM JOHN T. WISNICH

NOTES:
 1. EQUIPMENT AND FINISHINGS SHALL BE COORDINATED WITH PLUMB, CIVIL/MECHANICAL AND STRUCTURAL DRAWINGS.



REV	DATE	DESCRIPTION	BY	CHKD
1	12/20/2024	ISSUED FOR PERMIT	JTW	JTW
2	12/20/2024	REVISED PER COMMENTS	JTW	JTW

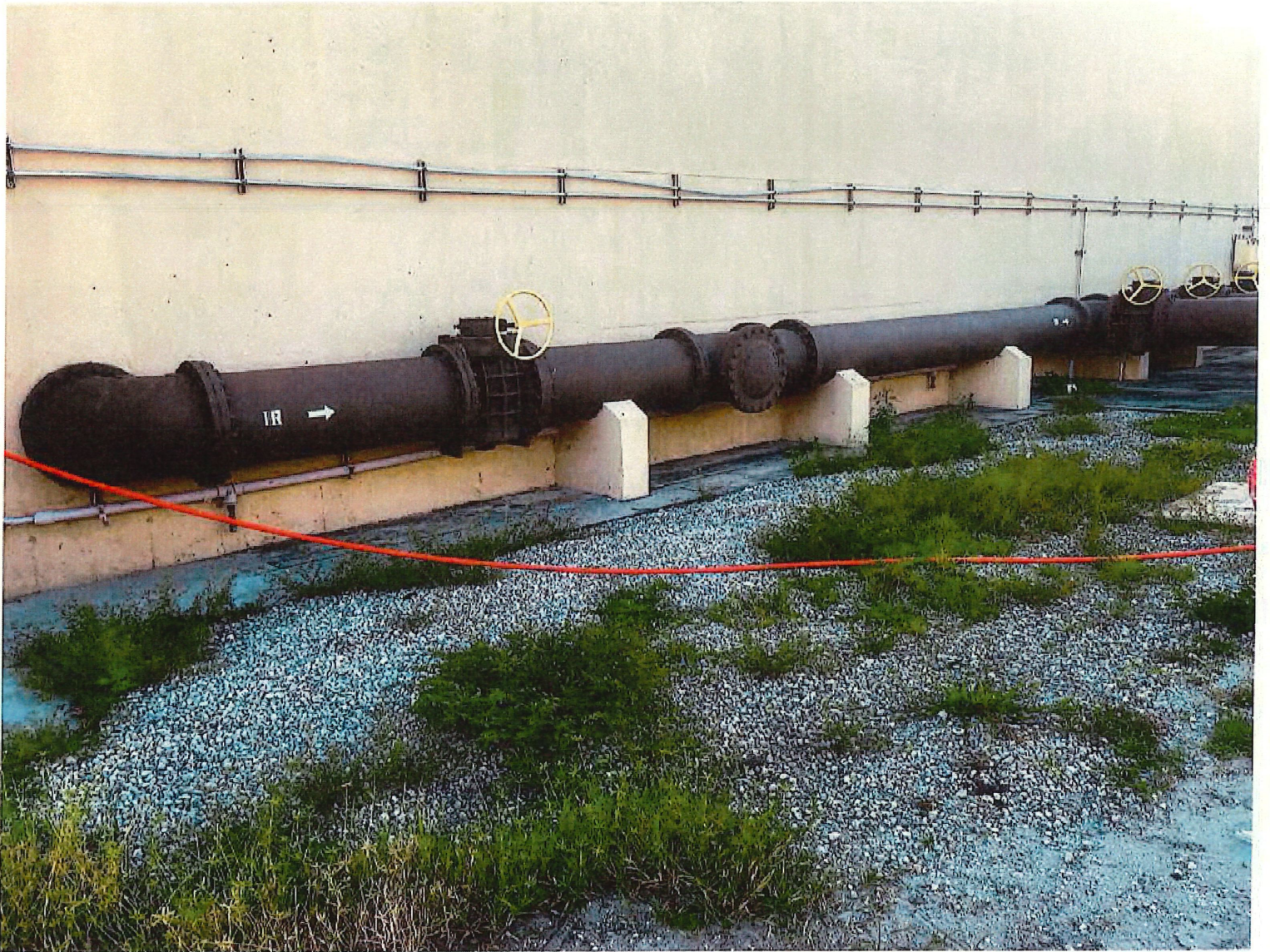
JonesEdmunds
 200 N. W. 10th Street, Suite 100, Ft. Lauderdale, FL 33304
 TEL: 954.576.1000 FAX: 954.576.1001

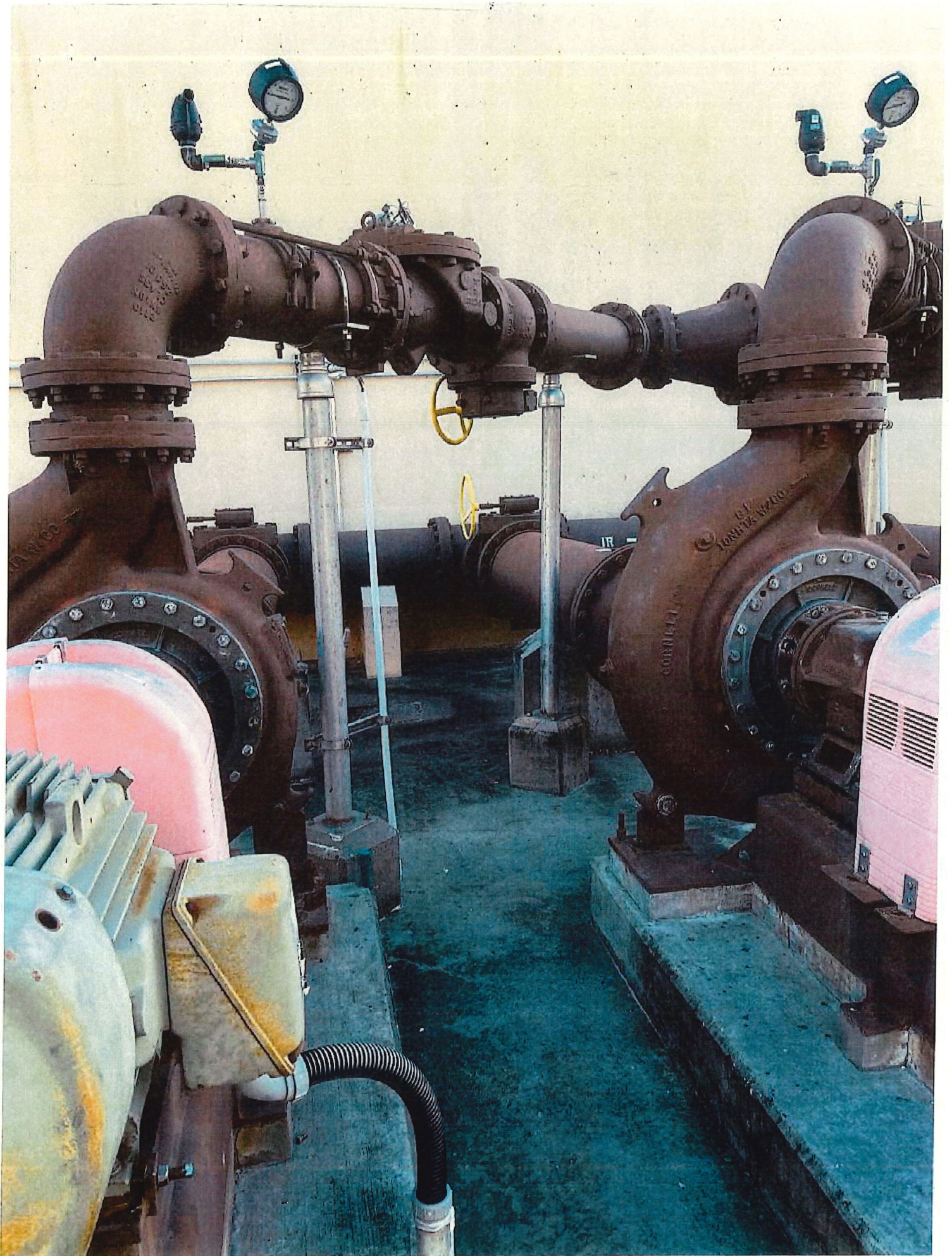
CHARLOTTE COUNTY UTILITIES
 EAST PORT WATER RECLAMATION FACILITY (WRF)
 8 MOD EXPANSION

IR PUMP PLAN AND SECTIONS

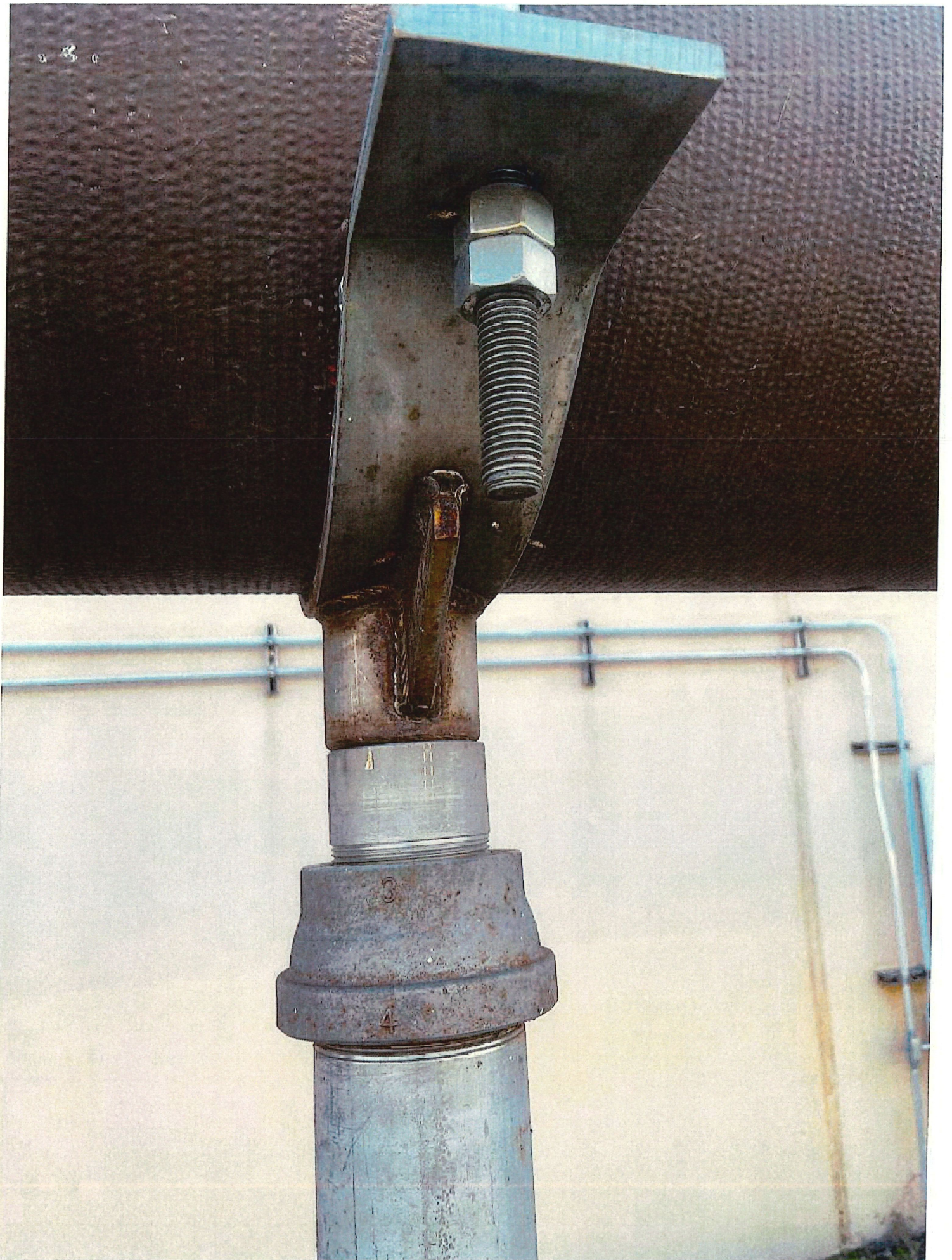
PROJECT NO.	DATE
03000-012-03	APRIL 2024
PLAN NO.	SHEET NO.
IR-1	M30

FOR CONSTRUCTION











Poole & Kent Company of Florida
1781 N.W. North River Drive
Miami, FL 33125
P.O. Box 420556
Miami, FL 33242

Phone: 305.325.1930
Fax: 305.324.0522

September 26, 2025

Charlotte County Utilities
25550 Harbor View Rd
Port Charlotte, FL 33980



Gregg Fruecht /
Jones Edmunds
10.08.2025

Attn: Hendrik Dolleman

Re: Eastport WRF MGD Expansion Project
Contract Number: 18-0006
Poole & Kent Project No. 24801

Subject: PCO 46- Concrete Pipe Supports at IR Pump Station Piping
P&K PCO No. 46B

Dear Mr. Fruecht,

Poole & Kent prepared a cost proposal utilize concrete for (9) 20" pipe supports on IR pump Station Suction header in lieu of Metal supports. We propose to incorporate the work, as clarified herein, for a lump sum increase to our contract in the amount of \$17,513.27 and (0) calendar days to the contract completion date.

This proposal includes the following clarifications.

1. This proposal is valid for a period of 21 days, after which it is void at the option of Poole & Kent.
2. Pricing is based on normal working hours and does not include any overtime.
3. Price includes only the work specifically described in our proposal and the attached subcontractor proposals. Any additional work required for this change will be quoted as it becomes known.
4. Should additional time be required for this change, we then reserve our right to a time extension and associated costs.
5. For more detailed information, please see the attached submittal and breakdown from Poole and Kent.

Please notify P&K as soon as possible if we are to proceed with the above changes. Should you have any questions, please do not hesitate to call.

Very truly yours,
POOLE & KENT COMPANY OF FLORIDA

Mike Lauer

Michael Lauer
Project Manager



Baker PCO # 12R2
BBC PCO # _____

September 26, 2025

Mike Lauer
Poole & Kent Company of Florida
1715 W. Lemon Street
Tampa, FL 33606
Attn: Mike Lauer

Re: **East Port WRF**
PIPE SUPPORTS

Mike,

Attached please find pricing for Baker Concrete to provide labor, material and equipment to install the Pipe Supports on the East Port WRF Project.

Terms and conditions of our base contract shall apply and will be made part of our final contract if accepted.

Qualifications & Assumptions:

- NO EXTENSION OF PROJECT SCHEDULE WILL BE ASSUMED IF WORK IS COMPLETED BEFORE ALL OTHER CURRENT CONTRACT ITEMS ARE COMPLETE. IF WORK IS TO BE COMPLETED AFTER CURRENT CONTRACT ITEMS ARE COMPLETED, EXTENSION OF SCHEDULE WILL BE REQUIRED.
- ALL COSTS FOR GENERAL LIABILITY ARE EXCLUDED
- OVERTIME TO COMPLETE THE ADDITIONAL WORK IS NOT INCLUDED
- DEWATERING IS EXCLUDED
- EXCAVATION, HAUL OFF, BACKFILL, COMPACTION & DENSITY TESTING ARE EXCLUDED
- ANY CHANGE THAT IS NOT CLEARLY SHOWN AND LABELED IS EXCLUDED. IT IS ASSUMED THAT ALL DETAILS HAVE BEEN COMPLETELY DESIGNED SUCH THAT ALL CHANGES CAN BE INSTALLED COMPLETE AS SHOWN. ANY FORTHCOMING DETAILS OR SUPPLEMENTARY INFORMATION MODIFYING EXISTING DETAILS ARE EXCLUDED.
- PRICING IS BASED ON ALL AREAS TO BE OPEN AND ACCESSIBLE AT ONE TIME FOR BAKER TO HAVE CONTINUOUS WORK AND NO INTERRUPTIONS ON A STANDARD (5) FIVE DAY 40-HOURS WORK WEEK. OUR PROPOSAL DOES NOT INCLUDE ANY RESTRICTED WORKING HOURS.
- ANY COSTS TO ACCELERATE THE WORK IN THIS PROPOSAL DUE TO FAILURE OF OTHERS TO PERFORM IS NOT INCLUDED
- PRICING IS BASED ON THE ASSUMPTION THAT BAKER WILL RECEIVE AN OFFICIAL CHANGE ORDER FOR THE ADDITIONAL WORK WITHIN 30 DAYS OF ACCEPTANCE. IT SHALL BE ACCEPTABLE TO ADD THIS PCO AS A LINE ITEM TO THE SCHEDULE OF VALUES AND BILL AGAINST IT FOR THE PERIOD THE WORK IS PERFORMED.
- PROCUREMENT OF NEOPRENE AND ANCHOR BOLTS IS EXCLUDED.
- ANCHOR BOLTS TO BE POST-INSTALLED
- PIPE TO BE IN PLACE BEFORE STARTING THE FORMING AND PLACEMENT OF ALL NINE (9) PIPE SUPPORTS, PAD DIMENSIONS FOR WHICH SHOULD MEASURE 5'x2'6"x8" WITH SUPPORT DIMENSION 3'x2'4"x12".

Our price for completing this work (See attached): \$ 31,408

* Modifications to scope referenced in this PCO will require an extension to the project schedule of (0) working days.

Should you have any questions or concerns, please contact me directly.

Respectfully,

(submitted via e-mail)

Adhi Kotwal
Baker Concrete Construction, Inc.

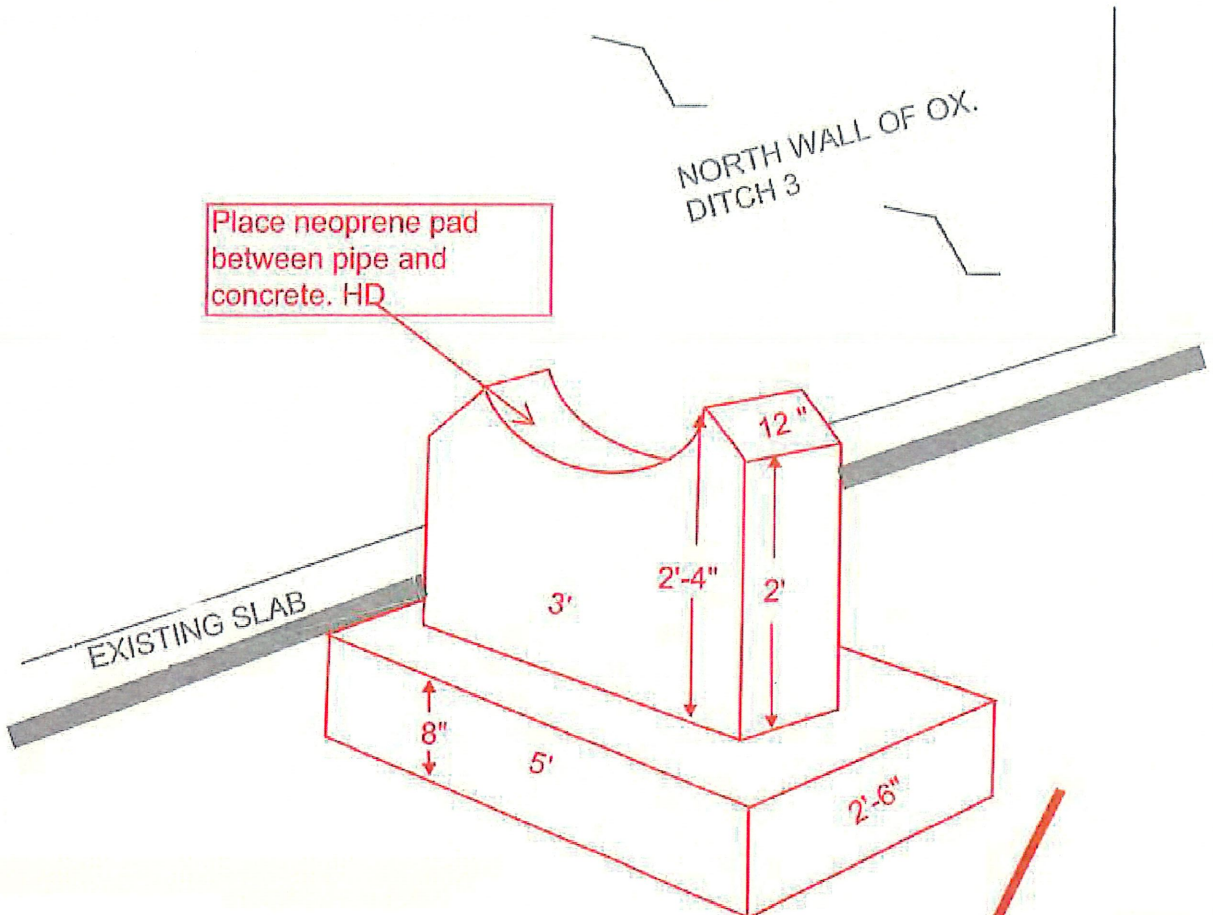
CC: BCC Job File #15425
K. Muir BCC
Joe Jacobs BCC

Attachments: PCO 12R1 Pricing Breakdown

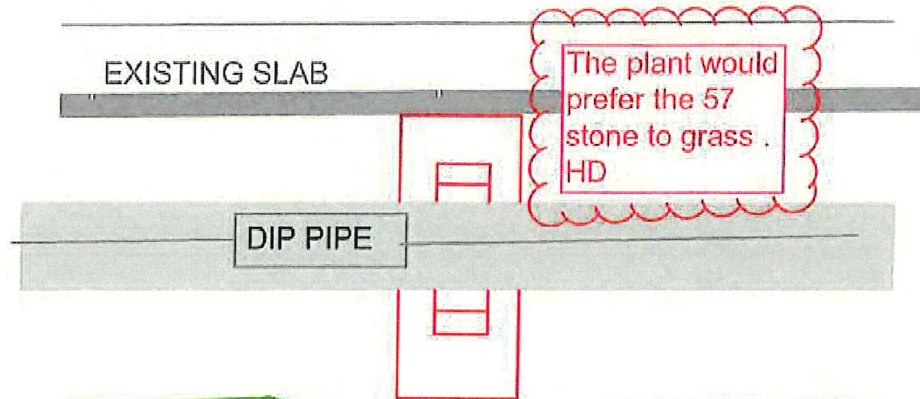


PCO 12R2

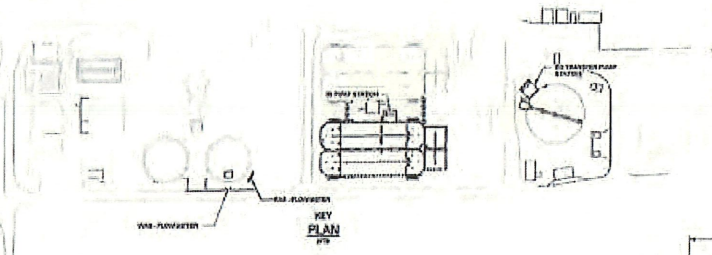
JOB: 15425 - EAST FORT WRT		TAKE OFF: 01							REVISED: 9/26/2015				
DOCUMENT: PIPE SUPPORTS		HD: S/FILE:											
DESCRIPTION	NOTES	CITY	UNIT	Lab Amt	Mat Amt	E/O Amt	Sub Amt	Lab Total	Mat Total	Eq./Dch Total	Subcont. Total	Item Total	
PIPE SUPPORTS													
Management								\$	\$	\$	\$	\$	
Project Managers					\$102.18			\$	\$	\$	\$	\$	
Project Managers Overtime					\$353.27			\$	\$	\$	\$	\$	
Project Engineer					\$17.60			\$	\$	\$	\$	\$	
Project Engineer Overtime					\$116.40			\$	\$	\$	\$	\$	
Foreman			38.00	hr	\$64.76			\$	\$	\$	\$	\$	
Foreman Overtime					\$103.19			\$	\$	\$	\$	\$	
Carpenter			90.00	hr	\$47.15			\$	\$	\$	\$	\$	
Carpenter Overtime					\$80.76			\$	\$	\$	\$	\$	
Concrete Placer and Finisher					\$47.15			\$	\$	\$	\$	\$	
Concrete Placer and Finisher Overtime					\$80.76			\$	\$	\$	\$	\$	
Field Engineer/ Layout			10.00	hr	\$77.60			\$	\$	\$	\$	\$	
Field Engineer/ Layout Overtime					\$126.46			\$	\$	\$	\$	\$	
Superintendent/Supervisor			8.00	hr	\$102.18			\$	\$	\$	\$	\$	
Superintendent/Supervisor Overtime					\$153.27			\$	\$	\$	\$	\$	
Laborer			137.00	hr	\$11.32			\$	\$	\$	\$	\$	
Laborer Overtime					\$55.98			\$	\$	\$	\$	\$	
Subcontractor								\$	\$	\$	\$	\$	
Install reinforcing			18.00	hr		\$90.00		\$	\$	\$	\$	\$	
Place & Finish			1.00	ls		\$1,638.00		\$	\$	\$	\$	\$	
Materials								\$	\$	\$	\$	\$	
Reinforcing + freight			1.00	ls		\$500.00		\$	\$	\$	\$	\$	
Concrete			8.00	cy		\$216.00		\$	\$	\$	\$	\$	
Formwork			84.00	sl		\$5.00		\$	\$	\$	\$	\$	
Drill Bits & Epoxy			1.00	ls		\$480.00		\$	\$	\$	\$	\$	
Equipment								\$	\$	\$	\$	\$	
Pump			1.00	ls		\$3,000.00		\$	\$	\$	\$	\$	
								Category Total:	\$ 13,180	\$ 3,000	\$ 3,218	\$ 22,377	
								Tax	7.00%	\$ 209	\$ 210	\$ 419	
								Burden	36.00%	\$ 4,748	\$ -	\$ -	\$ 4,748
								Sub-totals (No Fee)	\$ 17,938	\$ 3,189	\$ 3,210	\$ 24,594	
								DISP (5% on SUBS)	15.00%	\$ 2,691	\$ 478	\$ 103	\$ 3,013
								Bond	0.00%	\$ -	\$ -	\$ -	\$ -
								Total	\$ 20,628	\$ 3,667	\$ 3,692	\$ 31,908	
								PCO TOTAL	\$		\$	31,408	



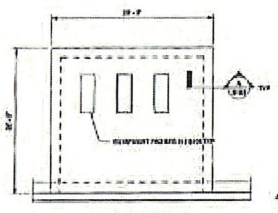
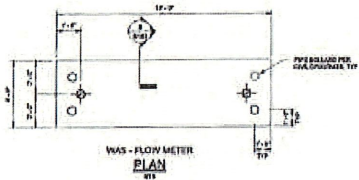
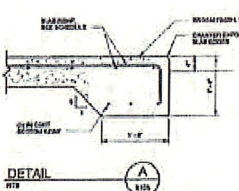
ISOMETRIC VIEW



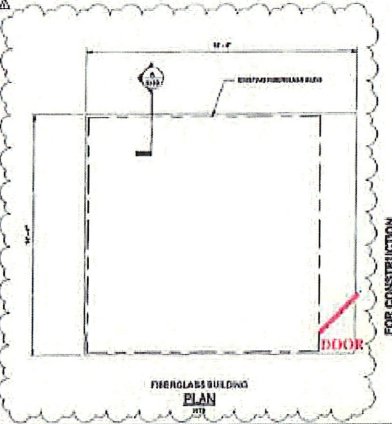
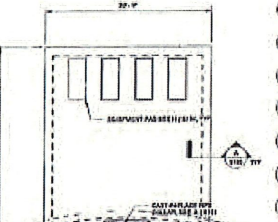
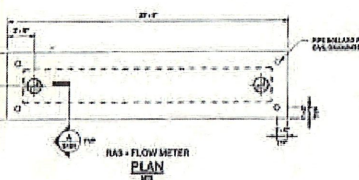
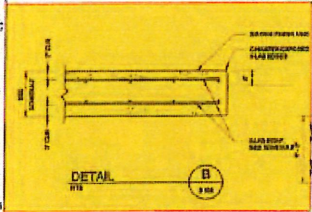
PLAN VIEW



MISC SLAB SCHEDULE				
SLAB NAME	SIZE	SLAB THICKNESS (")	REINFORCEMENT	REMARKS
WAS - FLOW METER SLAB	18'-0" x 6'-0"	4"	#4@17' O.C. BY	SEE PLAN THIS SHEET
IR PUMP STATION SLAB	12'-0" x 4'-0"	4"	#4@17' O.C. BY	SEE PLAN THIS SHEET
RG TRANSFER PUMP STATION SLAB	28'-0" x 28'-0"	4"	#4@17' O.C. BY	SEE PLAN THIS SHEET
RG TRANSFER PUMP STATION SLAB	28'-0" x 28'-0"	4"	#4@17' O.C. BY	SEE PLAN THIS SHEET
RG TRANSFER PUMP STATION SLAB	28'-0" x 28'-0"	4"	#4@17' O.C. BY	SEE PLAN THIS SHEET
RG TRANSFER PUMP STATION SLAB	28'-0" x 28'-0"	4"	#4@17' O.C. BY	SEE PLAN THIS SHEET
RG TRANSFER PUMP STATION SLAB	28'-0" x 28'-0"	4"	#4@17' O.C. BY	SEE PLAN THIS SHEET
RG TRANSFER PUMP STATION SLAB	28'-0" x 28'-0"	4"	#4@17' O.C. BY	SEE PLAN THIS SHEET
RG TRANSFER PUMP STATION SLAB	28'-0" x 28'-0"	4"	#4@17' O.C. BY	SEE PLAN THIS SHEET
RG TRANSFER PUMP STATION SLAB	28'-0" x 28'-0"	4"	#4@17' O.C. BY	SEE PLAN THIS SHEET



- REMARKS:**
1. PROVIDE THE SLAB WITH THE PROPOSED REINFORCEMENT WITH THE PROPOSED CONCRETE STRENGTH.
 2. ALL SPACERS AND REINFORCEMENT CONCRETE SHALL BE SUPPLIED BY THE CONTRACTOR TO BE USED ON SITE.
 3. SEE ALL DIMENSIONS OF REINFORCEMENT AND SPACERS TO BE PROVIDED BY THE CONTRACTOR TO BE USED ON SITE.
 4. ALL DIMENSIONS TO BE SHOWN WITHIN ALL DIMENSIONS TO BE PROVIDED.



FOR CONSTRUCTION

Rebar details for the pads to include double #5 rebar per detail with 2" clearances on sides

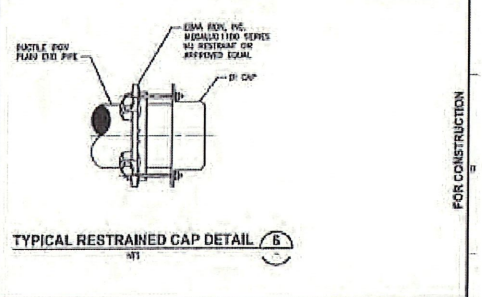
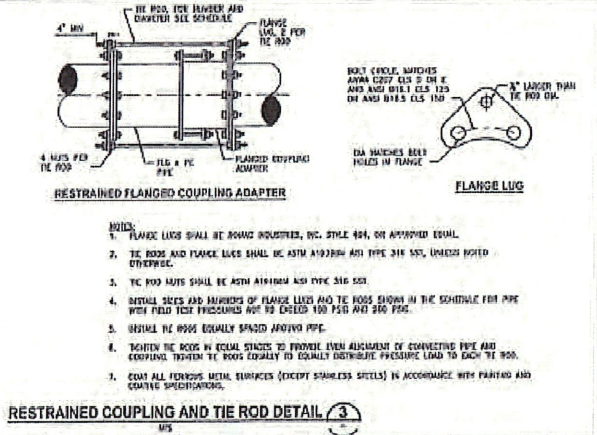
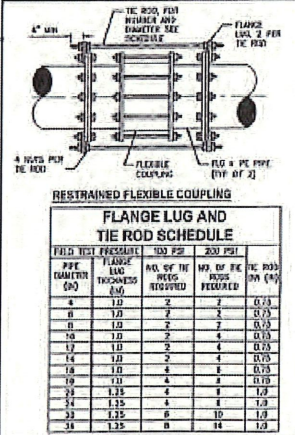
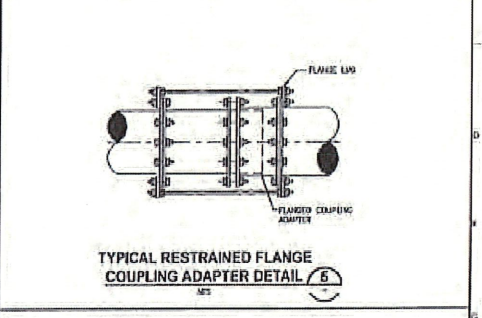
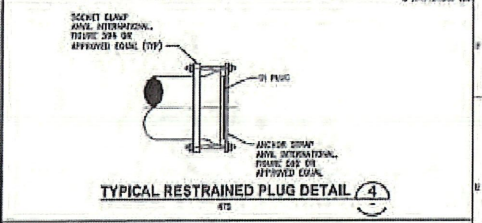
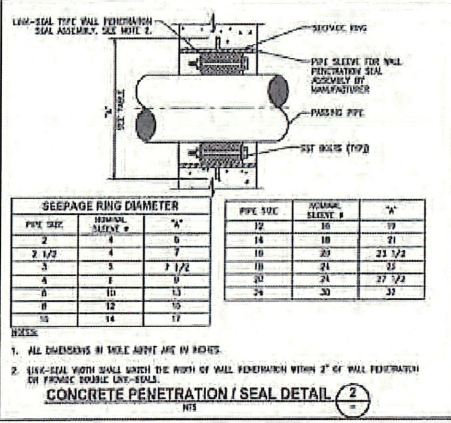
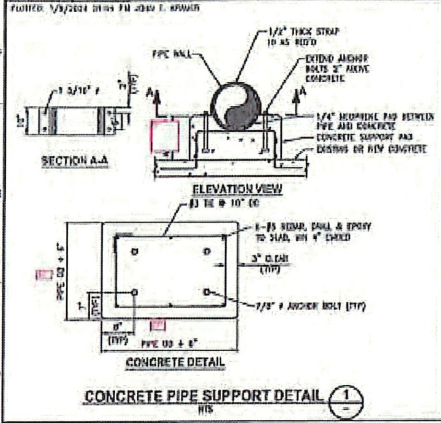
NO.	DESCRIPTION	DATE	BY	CHECKED
1	ISSUED FOR CONSTRUCTION	04/27/2024	JEM	JEM

JonesEdmunds
 1115 W. 10th Street, Suite 100, Tallahassee, FL 32304
 TEL: 904.437.1111 FAX: 904.437.1112

CHARLOTTE COUNTY UTILITIES DEPARTMENT
 EAST PORT WATER RECLAMATION FACILITY (WRP)
 3 MOD EXPANSION

MISCELLANEOUS SLABS

PROJECT NO:	0303-012-01	DATE:	04/27/2024
SHEET NO:	101	SCALE:	AS SHOWN



FLANGE LUG AND TIE ROD SCHEDULE				
FIELD TEST PRESSURE (PSI)	FLANGE LUG THICKNESS (IN)	NO. OF TIE RODS REQUIRED	NO. OF TIE RODS REQUIRED	TIE ROD DIA (IN)
4	1.0	2	2	0.75
6	1.0	2	2	0.75
8	1.0	2	2	0.75
10	1.0	2	4	0.75
12	1.0	2	4	0.75
14	1.0	2	4	0.75
16	1.0	4	4	0.75
18	1.0	4	4	0.75
20	1.25	4	4	1.0
24	1.35	4	8	1.0
30	1.25	6	10	1.0
36	1.25	6	14	1.0

NO.	DATE	REVISION	BY	APP'D

JonesEdmunds
 YOUR BEST SOURCE FOR QUALITY DESIGN AND CONSTRUCTION SERVICES

CHARLOTTE COUNTY UTILITIES
 EAST PORT WATER RECLAMATION FACILITY (WRP)
 9 MGD EXPANSION

MECHANICAL DETAILS

PROJECT NO. 03425-012-09 DATE MAY 2009
 SHEET NO. DWG NO. 1478

FOR CONSTRUCTION

PCO #49 – Additional Combination Starters for AWT

October 9, 2025, an electrical coordination meeting was held with the **Engineer of Record (Jones Edmunds – JE)**, **Contractor (Poole & Kent – P&K)**, and **Electrical Subcontractor (Windemuller)** to review electrical scope and equipment requirements associated with the AWT Anoxic Basin and Chlorine Contact Chamber.

October 9, 2025, following the electrical meeting, P&K submitted **PCO #49** to JE, proposing to supply and install additional **Combination Starters** for the AWT sample pumps located at the Anoxic Basin and Chlorine Contact Chamber. PCO #49 proposed incorporation of the work as a **lump sum increase of \$12,799.74 with zero (0) additional calendar days** to the Contract Time.

October 10, 2025, **RFI #167** was submitted to the JE Electrical Engineer by the JE Construction Administrator. The RFI referenced the October 9, 2025 electrical meeting and transmitted the associated technical submittals, including equipment cut sheets and **PCO #49**, requesting review and direction from the Electrical Engineer of Record.

October 31, 2025, the JE Electrical Engineer of Record responded to **RFI #167**, stating “**No Exception Taken**,” thereby confirming acceptability of the proposed equipment and configuration.

November 4, 2025, JE transmitted **RFI #167 and PCO #49** to **Charlotte County Utilities (CCU)** for Owner review and approval.

November 5, 2025, the **Treatment Facilities Superintendent** inquired as to why the sample pumps required Combination Starters. On **November 6, 2025**, the **CCU Project Manager** responded, confirming that the sample pumps due to the depths of AWT are **three-phase 480-volt pumps as required by the design**. These size pumps by design require the addition of starter pumps to operate. The Treatment Facilities Superintendent responded that, while the configuration appeared excessive, there were **no further comments or objections**.

November 6, 2025, **CCU approved PCO #49** and transmitted its review comments to JE.

November 13, 2025, the **JE Construction Administrator** issued formal confirmation stating “**Design Modification Approved**.”

Basis of Claim Entitlement

PCO #49 represents a **design modification** requiring the addition of Combination Starters for the AWT sample pumps in accordance with the electrical design requirements for three-phase 480-volt equipment. The proposed equipment was reviewed and accepted by the Electrical Engineer of Record, approved by CCU, and formally authorized by JE. The costs associated with PCO #49 are reasonable, necessary, and directly attributable to the approved design modification, with no impact to Contract Time.

PCO #49 – Additional Combination Starters for AWT

October 9, 2025, an electrical coordination meeting was held with the **Engineer of Record (Jones Edmunds – JE)**, **Contractor (Poole & Kent – P&K)**, and **Electrical Subcontractor (Windemuller)** to review electrical scope and equipment requirements associated with the AWT Anoxic Basin and Chlorine Contact Chamber.

October 9, 2025, following the electrical meeting, P&K submitted **PCO #49** to JE, proposing to supply and install additional **Combination Starters** for the AWT sample pumps located at the Anoxic Basin and Chlorine Contact Chamber. PCO #49 proposed incorporation of the work as a **lump sum increase of \$12,799.74 with zero (0) additional calendar days** to the Contract Time.

October 10, 2025, **RFI #167** was submitted to the JE Electrical Engineer by the JE Construction Administrator. The RFI referenced the October 9, 2025 electrical meeting and transmitted the associated technical submittals, including equipment cut sheets and **PCO #49**, requesting review and direction from the Electrical Engineer of Record.

October 31, 2025, the JE Electrical Engineer of Record responded to **RFI #167**, stating “**No Exception Taken,**” thereby confirming acceptability of the proposed equipment and configuration.

November 4, 2025, JE transmitted **RFI #167 and PCO #49** to **Charlotte County Utilities (CCU)** for Owner review and approval.

November 5, 2025, the **Treatment Facilities Superintendent** inquired as to why the sample pumps required Combination Starters. On **November 6, 2025**, the **CCU Project Manager** responded, confirming that the sample pumps due to the depths of AWT are **three-phase 480-volt pumps as required by the design**. These size pumps by design require the addition of starter pumps to operate. The Treatment Facilities Superintendent responded that, while the configuration appeared excessive, there were **no further comments or objections**.

November 6, 2025, **CCU approved PCO #49** and transmitted its review comments to JE.

November 13, 2025, the **JE Construction Administrator** issued formal confirmation stating “**Design Modification Approved.**”

Basis of Claim Entitlement

PCO #49 represents a **design modification** requiring the addition of Combination Starters for the AWT sample pumps in accordance with the electrical design requirements for three-phase 480-volt equipment. The proposed equipment was reviewed and accepted by the Electrical Engineer of Record, approved by CCU, and formally authorized by JE. The costs associated with PCO #49 are reasonable, necessary, and directly attributable to the approved design modification, with no impact to Contract Time.

2025.11.13_FE

SECTION 00932



Alachua | Jacksonville | Tampa | Titusville
Sarasota | Winter Haven

REQUEST FOR INFORMATION (RFI) No. 167

OWNER/CLIENT: Charlotte County Utilities PROJECT NO.: 18-0006 PROJECT MANAGER: Hendrik Dolleman
ENGINEER: Jones Edmunds & Associates, Inc. PROJECT NO.: 03405-012-09 PROJECT MANAGER: Tom Friedrich
CONTRACTOR: Poole & Kent Company of FL PROJECT NO.: 24801 PROJECT MANAGER: Mike Lauer
PROJECT NAME: Charlotte County Utilities East Port Water Reclamation Facility (WRF) 9 MGD Expansion

TO: Mike Fadini DATE: 10.10.2025
RE: CONTRACT DOCUMENT REFERENCE(S): _____
FROM: Gregg Fruecht / Jones Edmunds

DESCRIPTION OF RFI:

INFORMATION CLARIFICATION INTERPRETATION

Is Requested for the Items Described Below or in the Attached:

Based on the Electrical Meeting held on 10.09.2025, Poole & Kent has submitted this technical data and PCO #49 - Proposal for Additional AWT Combination Starters. Please see attached Cut Sheets and PCO #49. Please review and advise of the Electrical EOR's response.

RESPONSE REQUESTED BY: _____ DATE _____ SIGNATURE _____

TO: Gregg Fruecht DATE: 10.31.2025
FROM: Mike Fadini / McKim & Creed
RESPONSE TO RFI NO.: 167

Our Response to your Request for INFORMATION CLARIFICATION INTERPRETATION

is Described Below or in the Attached: _____

NO EXCEPTION TAKEN MIKE FADINI, PE 10-31-25



Poole & Kent
Contractors
An EMCOR Company

Poole & Kent Company of Florida
1781 N.W. North River Drive
Miami, FL 33125
P.O. Box 420556
Miami, FL 33242

Phone: 305.325.1930
Fax: 305.324.0522

Oct 9, 2025

Charlotte County Utilities
25550 Harbor View Rd
Port Charlotte, FL 33980

Attn: Hendrik Dolleman
Re: Eastport WRF MGD Expansion Project
Contract Number: 18-0006
Poole & Kent Project No. 24801
Subject: PCO 49- Additional Combination Starters for Sample Pumps
P&K PCO No. 49

Dear Mr. Fruecht,

Poole & Kent prepared a cost proposal to supply and install additional Combination Starters for the sample pumps at the AWT Anoxic Basin and Chlorine Contact Chamber. We propose to incorporate the work, as clarified herein, for a lump sum increase to our contract in the amount of \$12,799.74 and (0) calendar days to the contract completion date.

This proposal includes the following clarifications.

1. This proposal is valid for a period of 21 days, after which it is void at the option of Poole & Kent.
2. Pricing is based on normal working hours and does not include any overtime.
3. Price includes only the work specifically described in our proposal and the attached subcontractor proposals. Any additional work required for this change will be quoted as it becomes known.
4. Should additional time be required for this change, we then reserve our right to a time extension and associated costs.
5. For more detailed information, please see the attached submittal and breakdown from Poole and Kent.

Please notify P&K as soon as possible if we are to proceed with the above changes. Should you have any questions, please do not hesitate to call.

Very truly yours,
POOLE & KENT COMPANY OF FLORIDA

Mike Lauer

Michael Lauer
Project Manager



Change Order #024

DATE: SEPTEMBER 23, 2025

TO:
 Mike Lauer
 Project Manager
 Poole & Kent Company Of Florida
 1715 W Lemon Street
 Tampa, Fl. 33606

Ship To:
 EastPort WRF 9 MGD Expansion
 3100 Loveland Blvd.
 Port Charlotte, Florida 33980

Project: EastPort WRF

Description Of Change to Scope: This change order is to provide and install 3 Combination Starters. These Starters were not indicated on the Electrical Plans but are required.

Authorized By _____

Print Name Mike Lauer

PROJECT MANAGER	P.O. NUMBER	REQUISITIONER	SHIPPED VIA	F.O.B. POINT	TERMS
Everardo Del Toro		Mike Lauer			Net 30

	DESCRIPTION	UNIT PRICE	TOTAL
Labor Change	Electrician 4 hrs	75.00/hr	300.00
	Apprentice 4 hrs	50.00/hr	200.00
Starters			8,538.82
Control Wire			85.00
Tax			603.67

SUBTOTAL		9,727.49
	10% OH	963.66
	5% Profit	481.83
TOTAL CHANGE ADD		\$11,082.03



2475 17TH ST
 SARASOTA FL 34234-1904
 Phone : 941-343-5300
 Fax : 941-365-5047

To: WINDEMULLER TECHNICAL SERVICES INC
 1611 NORTHGATE BLVD
 SARASOTA FL 34234-2117
 Attn: John Sedler
 Phone: 941-355-8822
 Fax: 941-359-1219
 Email:

Date: 08/21/2025
 Proj Name:
 GB Quote #: 2000447745
 Release Nbr:
 Purchase Order Nbr: EAST PORT COMBO STARTERS C/O
 Additional Ref#:
 Valid From: 08/21/2025
 Valid To: 09/20/2025
 Contact: Christopher S Mangipinto
 Email: christopher.mangipinto@graybar.com

Proposal

We Appreciate Your Request and Take Pleasure In Responding As Follows

Notes:

Item	Item/Type	Quantity	Supplier	Catalog Nbr	Description	Price	Unit	Ext Price
100		1 EA	SQUARE D CO.	Q-6245382	COMBO STARTERS C/O	\$ 8,538.82	1	\$ 8,538.82

GB Part #: LOT SQD PWR DIST

Total in USD (Tax not included): \$ 8,538.82

This equipment and associated installation charges may be financed for a low monthly payment through Graybar Financial Services (subject to credit approval). For more information call 1-800-241-7408 to speak with a leasing specialist.

To learn more about Graybar, visit our website at www.graybar.com 24-Hour Emergency Phone#: 1-800-GRAYBAR

Subject to the standard terms and conditions set forth in this document. Unless otherwise noted, freight terms are F.O.B. shipping point prepaid and billed. Unless noted the estimated ship date will be determined at the time of order placement. All material received by and held in our warehouse must be shipped or billed to the customer within 60 days from such receipt, or storage and handling fees in effect at such time may apply.

Order Number: 0050537644

Proposal Name: East Port WRF Expansion

Change Quote Name: COMBO STARTERS

Order Number: 0050537644

Proposal Number: P-230816-3935923

PO Number:

Change Quote Number: Q-6245382

Quote Date: 08/21/2025

Through Addenda Number: 0

Sales Representative: Matthew Rosenak

Conditions of Sale

This Quotation is subject to Coordinated Project Terms. See <https://www.se.com/us/en/download/document/0100PL0043/>

Quoted price in currencies other than U.S. Dollars is per the annual Schneider Electric exchange guidance.

Quote is valid for 30 days. Quoted lead times are approximate and subject to change.

Schneider Electric reserves the right to amend, withdraw or otherwise alter this submission without penalty or charge as a result of any event beyond its control arising from or due to the current Covid-19 epidemic or events subsequent to this epidemic / pandemic including changes in laws, regulations, by laws or direction from a competent authority.

Seq #	Qty	Product Description
1	3	<p>Designation : COMBO STARTERS</p> <p>Product Details :</p> <p>3 - 8539SCW7V81C6FF4G105G20H310P43P45+-Class 8539 Thermal Mag CB Combination Starter</p> <p>Class 8539 Thermal Mag CB Combination Starter</p> <p>8539SCW7V81C6FF4G105G20H310P43P45P88R174TX11</p> <p>Y1Y74Y741Y742</p> <p>NEMA Size 1</p> <p>Thermal Mag circuit breaker combination starter</p> <p>Thermal Mag - 30 amp</p> <p>Non-reversing 3 phase</p> <p>3 pole device</p> <p>Y74 - SPDT auxiliary contact on disconnect</p> <p>Y741 - DPDT circuit breaker remote indication</p> <p>Y742 - single pole normally open alarm contact on circuit breaker</p> <p>Selected for 10 HP @ 460V 3Ph</p> <p>Type 4/4X Stainless Steel Enclosure (304)</p> <p>NEMA 4/4X Stainless Steel enclosures</p> <p>Include conduit holes and hubs as standard. Contact manufacturing plant for TAG number, price and availability of enclosures without them.</p> <p>H3xx - SSOLR - Class 10/20 trip</p> <p>Range of 6-18 amps</p> <p>Additional auxiliary alarm contact</p> <p>Specified for 460V 3Ph power system</p> <p>Fused control transformer selected with 120V 60Hz coil</p> <p>T - Standard capacity</p> <p>480 Volt primary</p> <p>120 Volt secondary</p> <p>Fusing</p> <p>F4 - 2 primary control fuses</p> <p>F - 1 secondary control fuse</p> <p>Auxiliary contacts -</p> <p>1 Normally open</p> <p>1 Normally closed</p> <p>Internal NC auxiliary contact for off pilot light</p> <p>Control units supplied</p> <p>C6 - ON-OFF selector switch</p> <p>Pilot lights supplied</p> <p>P43 - Power OFF red pilot light (LED-PTT)</p> <p>P45 - Power ON green pilot light (LED-PTT)</p> <p>P88 - Amber Overload Fault pilot light (LED-PTT)</p> <p>R174 - 4 pole relay - unwired</p> <p>G105 - Wire markers</p> <p>Y1 - UL Panel Label</p> <p>Form G20 - IBC/ASCE7 Seismic Qualification</p> <p>Additional information is needed from customer at order time for Form G105 - Wire Markers. Information on how the wires are to be marked must be provided at order time.</p> <p>UL Panel Label (Form Y1) requires engineering approval. Do not use this Form unless you have been told to use it.</p> <p>Revision - 8/21/2025 - (S20250818/S20250818)</p> <p>8/21/2025 2:52:12 PM</p>



Poole & Kent Company of Florida
1781 N.W. North River Drive
Miami, FL 33126
P.O. Box 420556
Miami, FL 33242

Phone: 305.325.1930
Fax: 305.324.0622

Oct 9, 2025

Charlotte County Utilities
25550 Harbor View Rd
Port Charlotte, FL 33980

APPROVED

DESIGN MODIFICATION

Gregg Fruecht
Jones Edmunds
11.13.2025

Attn: Hendrik Dolleman

Re: **Eastport WRF MGD Expansion Project**
Contract Number: 18-0006
Poole & Kent Project No. 24801

Subject: **PCO 49- Additional Combination Starters for Sample Pumps**
P&K PCO No. 49

Dear Mr. Fruecht,

Poole & Kent prepared a cost proposal to supply and install additional Combination Starters for the sample pumps at the AWT Anoxic Basin and Chlorine Contact Chamber. We propose to incorporate the work, as clarified herein, for a lump sum increase to our contract in the amount of \$12,799.74 and (0) calendar days to the contract completion date.

This proposal includes the following clarifications.

1. This proposal is valid for a period of 21 days, after which it is void at the option of Poole & Kent.
2. Pricing is based on normal working hours and does not include any overtime.
3. Price includes only the work specifically described in our proposal and the attached subcontractor proposals. Any additional work required for this change will be quoted as it becomes known.
4. Should additional time be required for this change, we then reserve our right to a time extension and associated costs.
5. For more detailed information, please see the attached submittal and breakdown from Poole and Kent.

Please notify P&K as soon as possible if we are to proceed with the above changes. Should you have any questions, please do not hesitate to call.

Very truly yours,
POOLE & KENT COMPANY OF FLORIDA

Mike Lauer

Michael Lauer
Project Manager



Change Order #024

DATE: SEPTEMBER 23, 2025

TO:
 Mike Lauer
 Project Manager
 Poole & Kent Company Of Florida
 1715 W Lemon Street
 Tampa, Fl. 33606

Ship To:
 EastPort WRF 9 MGD Expansion
 3100 Loveland Blvd.
 Port Charlotte, Florida 33980

Project: EastPort WRF

Description Of Change to Scope: This change order is to provide and install 3 Combination Starters. These Starters were not indicated on the Electrical Plans but are required.

Authorized By _____

Print Name Mike Lauer

PROJECT MANAGER	P.O. NUMBER	REQUISITIONER	SHIPPED VIA	F.O.B. POINT	TERMS
Everardo Del Toro		Mike Lauer			Net 30

	DESCRIPTION	UNIT PRICE	TOTAL
Labor Change	Electrician 4 hrs	75.00/hr	300.00
	Apprentice 4 hrs	50.00/hr	200.00
Starters Control Wire			8,538.82
Tax			85.00
			603.67

SUBTOTAL

	9,727.49
10% OH	963.66
5% Profit	481.83
TOTAL CHANGE ADD	\$11,082.03



2475 17TH ST
 SARASOTA FL 34234-1904
 Phone : 941-343-5300
 Fax : 941-365-5047

To: WINDEMULLER TECHNICAL SERVICES INC
 1611 NORTHGATE BLVD
 SARASOTA FL 34234-2117
 Attn: John Sedler
 Phone: 941-355-8822
 Fax: 941-359-1219
 Email:

Date: 08/21/2025
 Proj Name:
 GB Quote #: 2000447745
 Release Nbr:
 Purchase Order Nbr: EAST PORT COMBO STARTERS C/O
 Additional Ref#:
 Valid From: 08/21/2025
 Valid To: 09/20/2025
 Contact: Christopher S Mangipinto
 Email: christopher.mangipinto@graybar.com

Proposal

We Appreciate Your Request and Take Pleasure In Responding As Follows

Notes:

Item	Item/Type	Quantity	Supplier	Catalog Nbr	Description	Price	Unit	Ext Price
100		1 EA	SQUARE D CO.	Q-6245382	COMBO STARTERS C/O	\$ 8,538.82	1	\$ 8,538.82
GB Part #: LOT SQD PWR DIST								

Total in USD (Tax not included): \$ 8,538.82

This equipment and associated installation charges may be financed for a low monthly payment through Graybar Financial Services (subject to credit approval). For more information call 1-800-241-7408 to speak with a leasing specialist.

To learn more about Graybar, visit our website at www.graybar.com 24-Hour Emergency Phone#: 1-800-GRAYBAR

Subject to the standard terms and conditions set forth in this document. Unless otherwise noted, freight terms are F.O.B. shipping point prepaid and bill. Unless noted the estimated ship date will be determined at the time of order placement. All material received by and held in our warehouse must be shipped or billed to the customer within 60 days from such receipt, or storage and handling fees in effect at such time may apply.

Order Number: 0050537644

Proposal Name: East Port WRF Expansion

Change Quote Name: COMBO STARTERS

Order Number: 0050537644

Proposal Number: P-230816-3935923

PO Number:

Change Quote Number: Q-6245382

Quote Date: 08/21/2025

Through Addenda Number: 0

Sales Representative: Matthew Rosenak

Conditions of Sale

This Quotation is subject to Coordinated Project Terms. See <https://www.se.com/us/en/download/document/0100PL0043/>

Quoted price in currencies other than U.S. Dollars is per the annual Schneider Electric exchange guidance. Quote is valid for 30 days. Quoted lead times are approximate and subject to change.

Schneider Electric reserves the right to amend, withdraw or otherwise alter this submission without penalty or charge as a result of any event beyond its control arising from or due to the current Covid-19 epidemic or events subsequent to this epidemic / pandemic including changes in laws, regulations, by laws or direction from a competent authority.

Seq #	Qty	Product Description
1	3	<p>Designation : COMBO STARTERS</p> <p>Product Details :</p> <p>3 - 8539SCW7V81C6FF4G105G20H310P43P45+-Class 8539 Thermal Mag CB Combination Starter Class 8539 Thermal Mag CB Combination Starter 8539SCW7V81C6FF4G105G20H310P43P45P88R174TX11 Y1Y74Y741Y742 NEMA Size 1 Thermal Mag circuit breaker combination starter Thermal Mag - 30 amp Non-reversing 3 phase 3 pole device Y74 - SPDT auxiliary contact on disconnect Y741 - DPDT circuit breaker remote indication Y742 - single pole normally open alarm contact on circuit breaker Selected for 10 HP @ 460V 3Ph Type 4/4X Stainless Steel Enclosure (304) NEMA 4/4X Stainless Steel enclosures Include conduit holes and hubs as standard. Contact manufacturing plant for TAG number, price and availability of enclosures without them. H3xx - SSOLR - Class 10/20 trip Range of 6-18 amps Additional auxiliary alarm contact Specified for 460V 3Ph power system Fused control transformer selected with 120V 60Hz coil T - Standard capacity 480 Volt primary 120 Volt secondary Fusing F4 - 2 primary control fuses F - 1 secondary control fuse Auxiliary contacts - 1 Normally open 1 Normally closed Internal NC auxiliary contact for off pilot light Control units supplied C6 - ON-OFF selector switch Pilot lights supplied P43 - Power OFF red pilot light (LED-PTT) P45 - Power ON green pilot light (LED-PTT) P88 - Amber Overload Fault pilot light (LED-PTT) R174 - 4 pole relay - unwired G105 - Wire markers Y1 - UL Panel Label Form G20 - IBC/ASCE7 Seismic Qualification Additional information is needed from customer at order time for Form G105 - Wire Markers. Information on how the wires are to be marked must be provided at order time. UL Panel Label (Form Y1) requires engineering approval. Do not use this Form unless you have been told to use it. Revision - 8/21/2025 - (S20250818/S20250818) 8/21/2025 2:52:12 PM</p>

RFI #161 / PCO #50 – Unforeseen Conduit Conflict

RFI #161 / PCO #50 – Unforeseen Conduit Conflict at South End of HWSB

August 29, 2025, Poole & Kent (P&K) encountered an unforeseen underground condition during excavation for the installation of two (2) 36-inch ML pipelines and one (1) 42-inch RS pipeline extending from the Headworks Splitter Box (HWSB). P&K promptly notified the Owner and Engineer by submitting **RFI #161**, reporting the discovery of a previously unidentified duct bank consisting of approximately twenty (20) conduits ranging from 1 inch to 3 inches in diameter located directly at the required pipe elevation. This condition conflicted with all three remaining pipeline installations and resulted in a complete work stoppage in the affected area. P&K requested direction regarding identification of active, future, and abandoned conduits and instructions on how to proceed.

September 3, 2025, RFI #161 was discussed during the monthly progress meeting. The **Charlotte County Utilities (CCU) Project Manager** was assigned to coordinate with **CCU Instrumentation & Controls (I&C)** staff to determine the operational status of the encountered conduits.

Also on **September 3, 2025**, a field meeting was held with **CCU, Jones Edmunds (JE), and P&K** to further address the issue. During this meeting, CCU I&C staff advised that the plant did not have sufficient personnel resources available to perform the required conduit identification.

September 4, 2025, CCU issued written confirmation via email stating that the plant did not have the resources to identify the conduits associated with RFI #161. CCU further acknowledged that P&K's subcontractor could perform the investigation on a **time and material basis**, pending agreement. CCU's Project Manager, Operations Manager, and Director subsequently discussed the matter, and the Director instructed the Project Manager to **"do it,"** authorizing the work to proceed under a time and material arrangement.

Later on **September 4, 2025**, P&K provided verbal confirmation agreeing to perform the conduit identification and investigation under a **time and material Potential Change Order (PCO)** in order to mitigate further project impacts.

September 25, 2025, P&K completed the investigation and submitted the results, identifying the status of all subject conduits and enabling direction for removal, relocation, and protection as required.

October 30, 2025, P&K submitted **PCO #50**, incorporating the time and material work performed to excavate, expose, investigate, remove, and relocate existing conduits south of the HWSB to allow installation of the 36-inch and 42-inch pipelines. PCO #50 requested a **lump sum equitable adjustment of \$8,469.96 with no increase to Contract Time.**

November 14, 2025, CCU advised JE that **PCO #50 was approved**. On the same date, JE issued formal concurrence identifying the work as **"Approved – Found Condition."**

RFI #161 / PCO #50 – Unforeseen Conduit Conflict

Basis of Claim Entitlement

The encountered duct bank constitutes a **differing site condition and/or changed condition** because the conduits were not shown or reasonably inferable from the Contract Documents and materially differed from conditions anticipated at bid time. P&K provided timely notice, adhered to all directives from the Owner, and performed the necessary work on a **time and material basis at CCU's explicit request**, including direction from CCU senior management to proceed immediately to avoid further delays. The costs submitted under **PCO #50** are reasonable, necessary, and directly attributable to the unforeseen condition and the Owner-directed response required to resolve it.



Poole & Kent
Contractors
An EMGOR Company

Poole & Kent Company of Florida
1781 N.W. North River Drive
Miami, FL 33125
P.O. Box 420556
Miami, FL 33242

Phone: 305.325.1930
Fax: 305.324.0522

October 30, 2025

Charlotte County Utilities
25550 Harbor View Rd
Port Charlotte, FL 33980

APPROVED

FOUND CONDITION

Gregg Fruecht
Jones Edmunds
11.14.2025

Attn: Hendrik Dolleman

Re: **Eastport WRF MGD Expansion Project**
Contract Number: 18-0006
Poole & Kent Project No. 24801

Subject: **Revised PCO 50- T&M CO for Conduit Work at HWSB for Piping Installation**
P&K PCO No. 50

Dear Mr. Fruecht,

Poole & Kent prepared a time and material CO to excavate, expose, investigate remove and relocate the existing conduits south of the HWSB for the new installation of 36" and 42" piping. We propose to incorporate the work, as clarified herein, for a lump sum increase to our contract in the amount of **\$8,469.96** and (0) calendar days to the contract completion date.

This proposal includes the following clarifications.

1. This proposal is valid for a period of 21 days, after which it is void at the option of Poole & Kent.
2. Pricing is based on normal working hours and does not include any overtime.
3. Price includes only the work specifically described in our proposal and the attached subcontractor proposals. Any additional work required for this change will be quoted as it becomes known.
4. **Should additional time be required for this change, we then reserve our right to a time extension and associated costs.**
5. For more detailed information, please see the attached submittal and breakdown from Poole and Kent.

Please notify P&K as soon as possible if we are to proceed with the above changes. Should you have any questions, please do not hesitate to call.

Very truly yours,
POOLE & KENT COMPANY OF FLORIDA

Mike Lauer

Michael Lauer
Project Manager



6111 PORTER WAY
SARASOTA, FL 34232
TEL: 941-780-9444

RECEIVED
JUL 28 2025
POOLE & KENT FLA.

Remit To:
MAIL CODE 5640
P.O. BOX 71200
CHARLOTTE, NC 28272-1200

4 WEEK BILL

Customer: 1087
POOLE AND KENT CO
1781 NW NORTH RIVER DR
MIAMI, FL 33125

Job Site:
LOVELAND WWTP
3100 LOVELAND BLVD
PORT CHARLOTTE, FL 33980

Invoice #... 947737-0020
Invoice date 7/22/25
Date out... 4/12/24 11:00 AM
Billed thru. 8/01/25
Job Loc..... 3100 LOVELAND BLVD, PORT CHARLOTT
Job No..... 01092389678
P.O. #..... 24801
Ordered By.. DAVE SPRINGETTI
Terms..... Net 30 Days
Sales Rep: KALIEN WATFORD
Written by..

Qty	Equipment #	Day	Week	4 Week
-----	-------------	-----	------	--------

1	COMPACT EXCAVATOR-8-9T-14-15' DEPTH 70510256 Make: DOOSAN Model: DX85R-3 Ser #: CEAAV-003652 HR OUT1 1083.80 HR IN1 Sandplate	585.00	1495.00	2995.00	2995.00
1	BUCKET-COMPACT EXCAVATOR-8-9T-24"				N/C

SALES ITEMS:

Qty	Item number	Unit	Price	
1	ENV ENVIRONMENTAL FEE	EA	89.850	89.85

Sub-total: 3084.85
Damage waiver: 449.25
Tax: 215.94
Total: 3750.04

BILLED FOR FOUR WEEKS 7/04/25 THRU 8/01/25 11:00 AM

DATE 7/31/25
PO NO. -
JOB NO. 24801
CLASS CODE JE5000
PROJ MGR APPROV. me
OFFICER APPROV. _____
SALES TAX Y N

The above Equipment has been received in good repair and operating condition
**Customer acknowledges that this transaction is governed by Synergy's terms and conditions which are set forth, in part, on the reverse side of this Agreement, and in full at www.synergiequip.com, which terms and conditions are incorporated by reference herein, and customer agrees that said terms and conditions shall be applicable to the exclusion of any other terms and conditions.

KEY DEPOSIT \$5.00
Initial: _____
IF EQUIPMENT DOES NOT WORK
PROPERLY NOTIFY OFFICE AT ONCE
Terms: Net due 30 days. 1.5% service charge per month after 30 days.
DAVE 954-914-4369

Signature _____ Date: _____
Printed Name _____
SAVA

DeJonge Excavating Contractors Inc.

203 S. Jackson Road
Venice, FL 34292
941-485-7799

Invoice

Date	Invoice #
8/25/2025	160502

Bill To
Poole & Kent Co of FL 1715 W. Lemon St. Tampa, FL 33606

P.O. No.	Terms	Project
East Port	Due on receipt	Eastport WRF

Quantity	Description	Rate	Amount
2	8/22/2025 57 stone #7164, 7069	925.00	1,850.00
Total			\$1,850.00



REQUEST FOR INFORMATION (RFI) No. 161

OWNER/CLIENT: Charlotte County Utilities PROJECT NO.: 18-0006 PROJECT MANAGER: Hendrik Dolleman

ENGINEER: Jones Edmunds & Associates, Inc. PROJECT NO.: 03405-012-09 PROJECT MANAGER: Tom Friedrich

CONTRACTOR: Poole & Kent Company of FL PROJECT NO.: 24801 PROJECT MANAGER: Mike Lauer

PROJECT NAME: Charlotte County Utilities East Port Water Reclamation Facility (WRF) 9 MGD Expansion

TO: Gregg Fruecht DATE: 8/29/2025

RE: CONTRACT DOCUMENT REFERENCE(S): _____

FROM: Poole & Kent

DESCRIPTION OF RFI:

INFORMATION CLARIFICATION INTERPRETATION

is Requested for the Items Described Below or in the Attached:

During the excavation for the installation of the two remaining 36" MI lines and the 42" RS line from the HWSB, we found a conflict with the previously found large duct bank. There are roughly 20 conduits ranging from 1" to 3" in size directly in the middle of the pipe elevation. This will conflict with all (3) remaining pipes that are required to be installed. Please confirm what conduits are deemed dead and could possibly be removed and what conduits are live and need to remain. Please review and advise on how to proceed with the remaining pipe installations, this has completely stopped us from moving forward and need a resolution as soon as possible.

RESPONSE REQUESTED BY: _____ DATE: 9/3/2025 _____
Michael Lauer
SIGNATURE

TO: Mike Lauer DATE: 09.29.2025

FROM: Gregg Fruecht

RESPONSE TO RFI NO.: 161

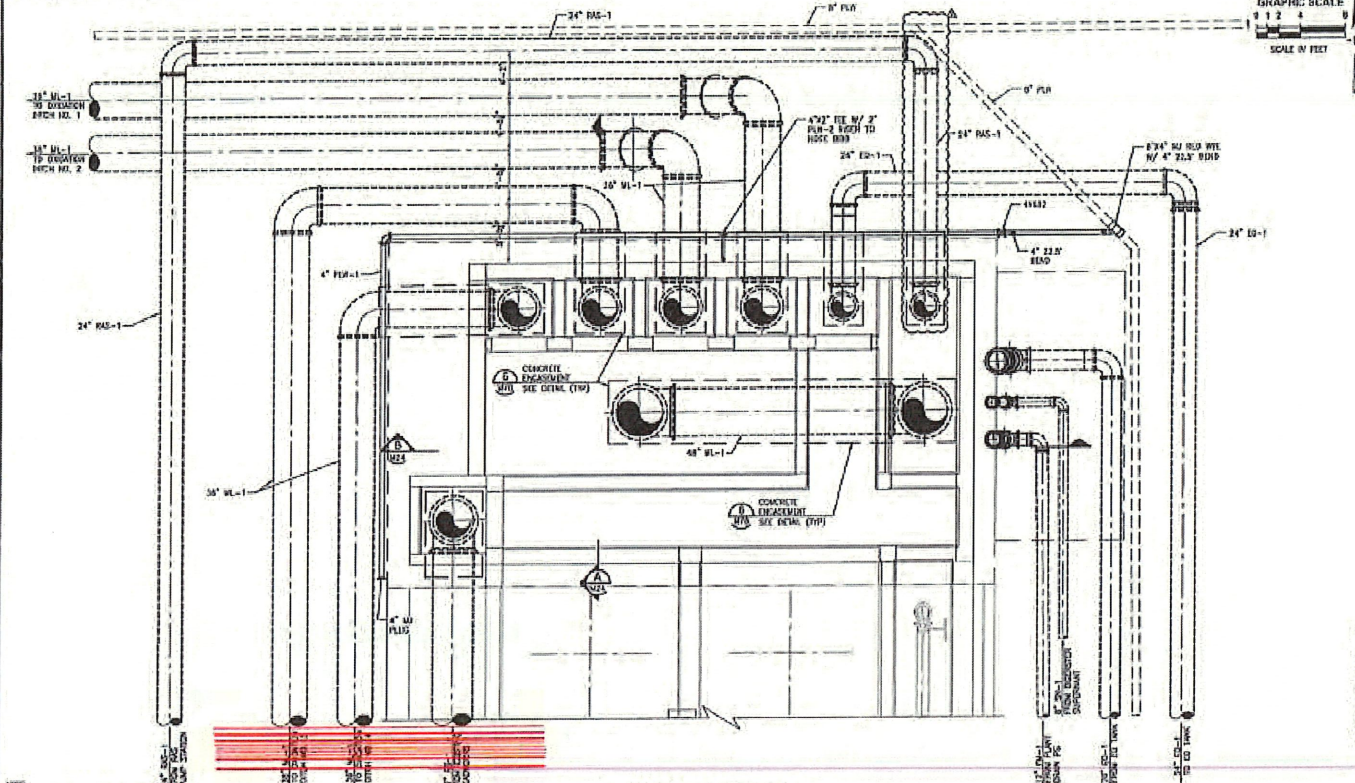
Our Response to your Request for INFORMATION CLARIFICATION INTERPRETATION

is Described Below or in the Attached: The County has directed Poole & Kent to proceed under Time & Materials basis to identify these conduits and any live circuits.

ATTACHMENT: _____


SIGNATURE

PLOTTER: 1/9/2024 12:49 PM JOHN L. RIVARDI



NOTES:
 1. MOUNT ALL FLOW PIPES TO SIDES OF PLASTIC PIPES AND HANGERS WITH PIPE CLAMPS OF 80. ALL PIPE CLAMPS AND MOUNTING BRACKETS SHALL BE ANSI TYPE 304 SS.

SPLITTER BOX LOWER PLAN
 1/4"=1'-0"

DATE	BY	CHKD	APP'D
1/9/2024	JR	JK	JR
1/9/2024	JR	JK	JR
1/9/2024	JR	JK	JR

JonesEdmunds
 ENGINEERS ARCHITECTS
 1000 W. GOLF COURSE, SUITE 200, CHARLOTTE, NC 28202
 TEL: 704.376.1234 FAX: 704.376.1235

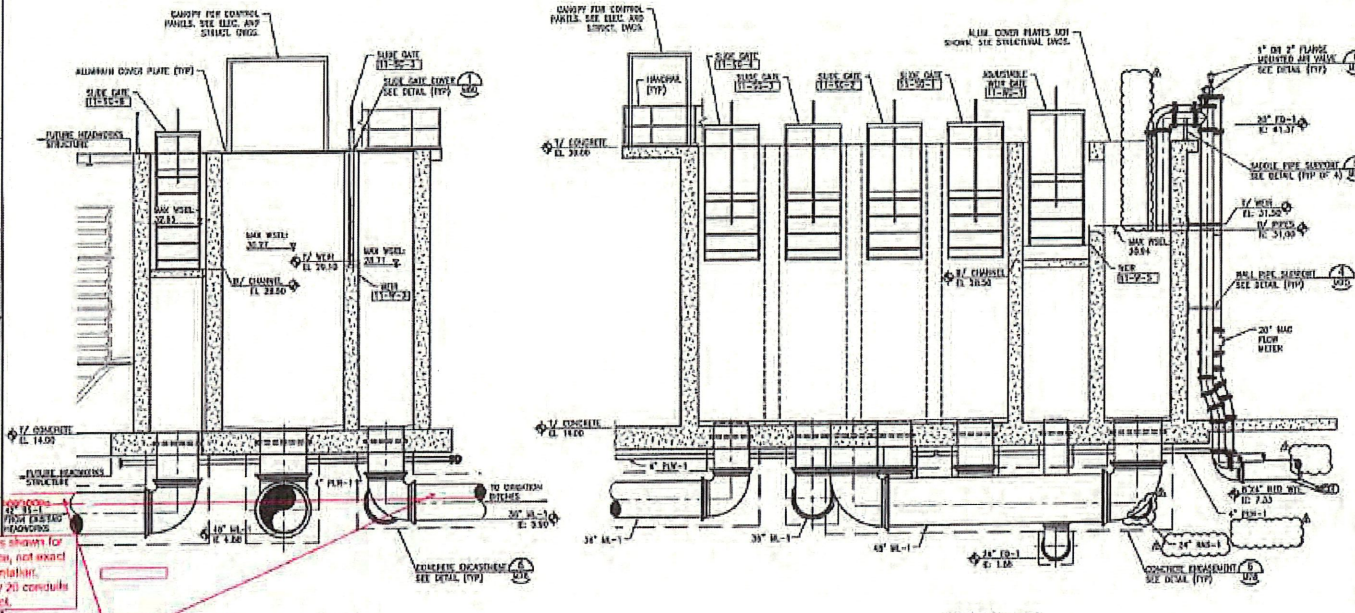
CHARLOTTE COUNTY UTILITIES
 EAST PORT WATER RECLAMATION FACILITY (WRF)
 8 MGD EXPANSION

HEADWORKS FLOW SPLITTER BOX -
 LOWER AND INTERMEDIATE PLAN

PROJECT NO.	DATE
03405-012-09	JANUARY 2024
WORK NO.	REV NO.
	V23

FOR CONSTRUCTION

PLOTTER: 1/9/2024 12:40 PM JOHN T. KESLER



Conduits shown for reference, not exact representation. Roughly 20 conduits in conflict.

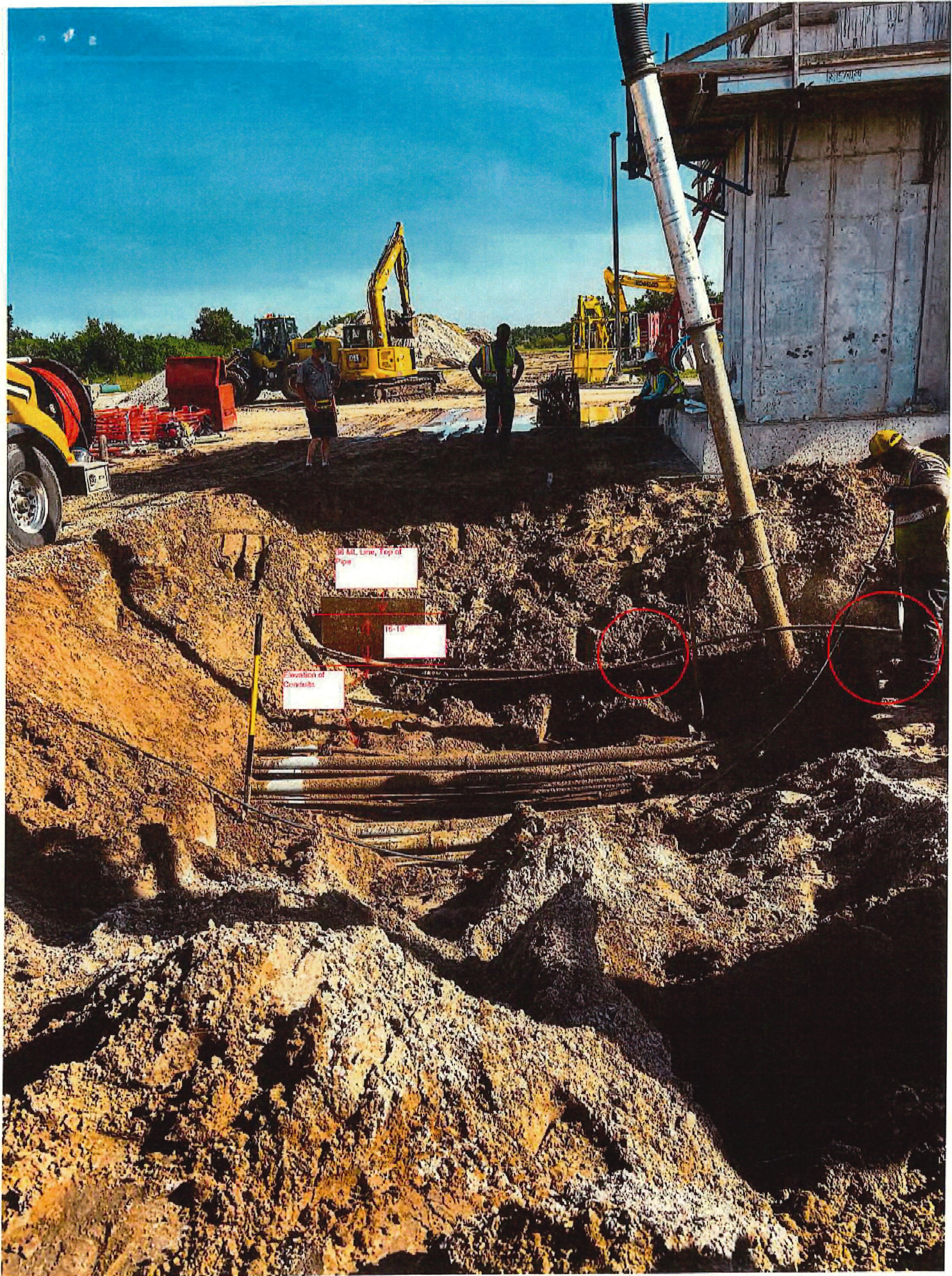
10'-10" down from top of pipe on 42" R/S and (2) 36" M-L Lines. Runs perpendicular to pipes coming in conflict with all 3 lines.

SECTION A
1/4"-1'-0"

SECTION B
1/4"-1'-0"

				CHARLOTTE COUNTY UTILITIES EAST PORT WATER RECLAMATION FACILITY (WRP) 9 MGD EXPANSION		HEADWORKS FLOW SPLITTER BOX - SECTION		PROJECT NO: 03105-012-09 SHEET NO: 024		DATE: JANUARY 2024 DWG NO: M24	
NO:	REV:	DATE:	BY:	CHK:	APP:	DATE:	BY:	CHK:	APP:	PROJECT NO: 03105-012-09 SHEET NO: 024	

FOR CONSTRUCTION



30 ft. Line, Top of
Pipe

10'-15'

Elevation of
Concrete