



# REP SERVICES, INC.

Experts at Play & Outdoor Spaces

Site Amenities ■ Playground Equipment ■ Safety Surfacing ■ Shade  
Phone: 407.831.9658 Fax: 866.232.8532 E-mail: sales@repsservices.com

E-mail POs and contracts to:

[contracts@repsservices.com](mailto:contracts@repsservices.com)

CGC1508223 FEIN 59-2978507 Page 1 of 5

Please mail checks to:

Rep Services, Inc.  
165 W. Jessup Ave.  
Longwood, FL 32750-4146

<b>Proposed To:</b> Charlotte County Charlotte County Community Services 1120 O' Donnell Blvd Port Charlotte, FL 33953-2905		<b>Ship To:</b> TBD at a later date		<b>Bill To:</b> Charlotte County Charlotte County Community Services 1120 O' Donnell Blvd Port Charlotte, FL 33953-2905			
<b>Attn:</b> Lacey Solomon		<b>Attn:</b>		<b>Attn:</b> Lacey Solomon			
<b>Project No:</b> 21369		<b>Project Name:</b> Charlotte County - G. C. Herring Park Re		<b>Project Contact:</b> Estimator			
<b>Proposal No:</b> 21369.10		<b>Proposal Name:</b> G.C. Herring Park Equipment Only		<b>Project Location:</b> 3406 Indiana Rd			
<b>Proposal Date:</b> 8/11/2025		<b>Proposal Expires:</b> 8/27/2025		Placida, FL 33947			
				Project County: Charlotte			
<b>For Questions Contact:</b> Jason Smith		☎ 407-853-3595		✉ jason@repsservices.com			
<b>Consultant:</b> Scott Brushwood		☎ 727-539-8457		✉ scott@repsservices.com			
				<b>Opt/Rev:</b> E/0 8/11/25 - JS			
<b>Vendor:</b> Landscape Structures		<b>Proj Drawings:</b> 21369-4-3 2025.1				604991	
<b>Class</b>	<b>Part No</b>	<b>Qty</b>	<b>Description</b>	<b>Unit Price</b>	<b>Disc</b>	<b>Net Price</b>	<b>Ext Price</b>
<b>Freestanding Play 13+</b>							
Sports & Fitness	IP192451A-001	1 EA	Ab Crunch/leg Lift DB - Order Post Separately*	2,215.00	-5.0%	2,104.25	2,104.25
	IP192452A-001	1 EA	Assisted Row/push-up DB - Order Post Separately*	2,000.00	-5.0%	1,900.00	1,900.00
	IP192453A-001	1 EA	Parallel Bars DB - Order Post Separately*	2,015.00	-5.0%	1,914.25	1,914.25
	IP192454A-001	1 EA	Balance Steps DB - Order Post Separately*	2,925.00	-5.0%	2,778.75	2,778.75
	IP192456A-001	1 EA	Chest/back Press DB - Order Post Separately*	7,000.00	-5.0%	6,650.00	6,650.00
	IP192460A-001	1 EA	Pull-up/dip DB - Order Post Separately*	2,315.00	-5.0%	2,199.25	2,199.25
	IP192462A-001	1 EA	Stretch DB - Order Post Separately*	3,700.00	-5.0%	3,515.00	3,515.00
	IP192463A-001	1 EA	Tai Chi Wheels - Order Post Separately*	2,750.00	-5.0%	2,612.50	2,612.50
	IP192464A-001	1 EA	Intro Sign DB	1,140.00	-5.0%	1,083.00	1,083.00
	IP205938A-001	1 EA	Hand Cycler - Order Post Separately*	3,300.00	-5.0%	3,135.00	3,135.00
	IP205944A-001	1 EA	Steel Post W/2 And 0 Attachments - DB	1,140.00	-5.0%	1,083.00	1,083.00
	IP205945A-001	2 EA	Steel Post W/2 And 1t Attachments - DB	1,140.00	-5.0%	1,083.00	2,166.00
	IP205946A-001	1 EA	Steel Post W/2 And 2 Attachments - DB	1,140.00	-5.0%	1,083.00	1,083.00
	IP205947A-001	1 EA	Steel Post W/3 Attachments - DB	1,140.00	-5.0%	1,083.00	1,083.00
	IP207607A-001	1 EA	Healthbeat Blank Sign Set	0.00	-5.0%	0.00	0.00
<b>PlayBooster 2-5</b>							
Bridges/Ramps	PB114665A-001	2 EA	Arch Bridge (42")	3,100.00	-5.0%	2,945.00	5,890.00
Climbers	PB122914A-005	1 EA	Loop Arch 48"dk DB	1,855.00	-5.0%	1,762.25	1,762.25
	PB152431A-007	1 EA	Abc Climber 48"dk DB	2,185.00	-5.0%	2,075.75	2,075.75
	PB345312A-001	1 EA	Loop Ladder 40"dk DB	1,245.00	-5.0%	1,182.75	1,182.75
Decks	PB111228A-001	4 EA	Square Tenderdeck	1,375.00	-5.0%	1,306.25	5,225.00
	PB111229A-001	2 EA	Square Deck Extension	1,310.00	-5.0%	1,244.50	2,489.00
	PB121948A-001	3 EA	Kick Plate 8"rise	150.00	-5.0%	142.50	427.50
	PB184354B-004	1 EA	Curved Transfer Module - Left 2-5yrs 40"dk DB	4,160.00	-5.0%	3,952.00	3,952.00
Enclosures	PB111240B-001	1 EA	Balcony Deck W/wheel	1,995.00	-5.0%	1,895.25	1,895.25
	PB116244A-001	2 EA	Pipe Barrier Above Deck	835.00	-5.0%	793.25	1,586.50
	PB116244B-001	1 EA	Pipe Barrier W/wheel - Above Deck	1,095.00	-5.0%	1,040.25	1,040.25
	PB345276A-001	1 EA	Storefront Panel	835.00	-5.0%	793.25	793.25
	PB345279A-001	1 EA	Table Panel DB	1,460.00	-5.0%	1,387.00	1,387.00
	PB345286A-001	1 EA	Chimes Panel Above Deck	1,980.00	-5.0%	1,881.00	1,881.00
Kids In Motion	IP152179A-002	1 EA	Saddle Spinner DB 12"height	990.00	-5.0%	940.50	940.50
	IP164074B-001	1 EA	Single Bobble Rider DB	1,605.00	-5.0%	1,524.75	1,524.75
	PB120818A-001	2 EA	Playstructure Seat	510.00	-5.0%	484.50	969.00
Posts	PB111404C-001	1 EA	132"alum Post DB	495.00	-5.0%	470.25	470.25
	PB111404D-001	7 EA	124"alum Post DB	475.00	-5.0%	451.25	3,158.75
	PB111404E-001	6 EA	116"alum Post DB	415.00	-5.0%	394.25	2,365.50

Sensory Play	IP168100A-001	2 EA	Sensory Play Center Wall DB	1,785.00	-5.0%	1,695.75	3,391.50
	IP168101A-001	2 EA	Sensory Play Center Wall End DB	1,185.00	-5.0%	1,125.75	2,251.50
	IP168661A-001	3 EA	Sensory Play Station Plate	0.00	-5.0%	0.00	0.00
	IP177715A-001	1 EA	Color Splash Panel	3,080.00	-5.0%	2,926.00	2,926.00
	IP177721A-001	1 EA	Rain Sound Wheel Panel	2,830.00	-5.0%	2,688.50	2,688.50
Signs	IP182503A-001	1 EA	Welcome Sign (Isi Provided) - Ages 2-5 Years Direct Bury	0.00	-5.0%	0.00	0.00
Slides & Gliders	PB122033D-001	1 EA	Spyroslide - 56"w/hanger Bracket DB	7,925.00	-5.0%	7,528.75	7,528.75
	PB124863C-013	1 EA	Slidewinder2 48"dk DB - 1 Straight 1 Left	3,485.00	-5.0%	3,310.75	3,310.75
	PB130800B-013	1 EA	Gemini Slidewinder2 40"dk DB - 1 Straight 1 Right	6,770.00	-5.0%	6,431.50	6,431.50
Swings	IP174018A-001	2 EA	Belt Seat - Proguard Chains For 8' Beam Height	165.00	-5.0%	156.75	313.50
	IP176038A-001	2 EA	Full Bucket Seat - Proguard Chains For 8' Beam Height	465.00	-5.0%	441.75	883.50
	IP221292A-001	1 EA	5" Arch Swing Frame - 8' Beam Height Only	3,665.00	-5.0%	3,481.75	3,481.75
	IP221293A-001	1 EA	5" Arch Swing Frame - Additional Bay 8' Beam Height Only	2,230.00	-5.0%	2,118.50	2,118.50

**PlayBooster 5-12**

Bridges/Ramps	PB193173B-001	1 EA	Tightrope Bridge - W/2 Grab Bars Connected Between Deck	2,755.00	-5.0%	2,617.25	2,617.25
Climbers	IP158997A-001	1 EA	Pod Climber 10" DB	370.00	-5.0%	351.50	351.50
	PB185583A-001	1 EA	Ring Tangle Climber - Ground Level	2,225.00	-5.0%	2,113.75	2,113.75
Custom	CP000488A-001	1 EA	Dtr Pb Netplex 13-post Use W/13-post Shade	2,805.00	-5.0%	2,664.75	2,664.75
Decks	PB111228A-001	2 EA	Square Tenderdeck	1,375.00	-5.0%	1,306.25	2,612.50
	PB121948A-001	1 EA	Kick Plate 8"rise	150.00	-5.0%	142.50	142.50
Enclosures	PB160694A-001	1 EA	Barrier With Infill Panel	825.00	-5.0%	783.75	783.75
	PB345281A-001	1 EA	Marble Panel Above Deck	3,135.00	-5.0%	2,978.25	2,978.25
	PB345285A-001	1 EA	Rain Sound Wheel Panel Above Deck	2,880.00	-5.0%	2,736.00	2,736.00
	PB345287A-001	1 EA	Tic-tac-toe Panel Above Deck	1,950.00	-5.0%	1,852.50	1,852.50
Kids In Motion	IP152179A-001	1 EA	Saddle Spinner DB 16"height	990.00	-5.0%	940.50	940.50
	IP152179A-002	1 EA	Saddle Spinner DB 12"height	990.00	-5.0%	940.50	940.50
	IP158105A-001	1 EA	Wobble Pod DB Only	2,050.00	-5.0%	1,947.50	1,947.50
	IP164075B-001	1 EA	Double Bobble Rider DB	2,765.00	-5.0%	2,626.75	2,626.75
	IP205800A-001	1 EA	Topsyturny Spinner - 42"bury DB Only	6,605.00	-5.0%	6,274.75	6,274.75
	PB111275A-001	2 EA	Handloop Assembly	320.00	-5.0%	304.00	608.00
	PB111276A-001	1 EA	Rail Assembly	315.00	-5.0%	299.25	299.25
	PB120901A-001	1 EA	Grab Bar	255.00	-5.0%	242.25	242.25
	PB193174A-001	1 EA	Sol Spinner DB	3,105.00	-5.0%	2,949.75	2,949.75
	PB201546A-001	1 EA	Gyro Twister DB	2,565.00	-5.0%	2,436.75	2,436.75
Mainstructures	PB193172A-001	1 EA	Watermill Climber	6,245.00	-5.0%	5,932.75	5,932.75
	PB224086B-001	1 EA	Disc Net Climber W/double Swoosh Slide For 13-post Mainstructure	44,275.00	-5.0%	42,061.25	42,061.25
Overhead Items	PB193170A-001	1 EA	Lolliladder W/2 E-pods	3,370.00	-5.0%	3,201.50	3,201.50
Posts	PB111404C-001	1 EA	132"alum Post DB	495.00	-5.0%	470.25	470.25
	PB111404E-001	1 EA	116"alum Post DB	415.00	-5.0%	394.25	394.25
	PB111404H-001	6 EA	92"alum Post DB	370.00	-5.0%	351.50	2,109.00
	PB111404I-001	2 EA	84"alum Post DB	360.00	-5.0%	342.00	684.00
	PB111404O-001	3 EA	132"steel Post DB 42" Bury	395.00	-5.0%	375.25	1,125.75
Signs	IP182503C-001	1 EA	Welcome Sign (Isi Provided) - Ages 5-12 Years Direct Bury	0.00	-5.0%	0.00	0.00

<b>Discount per the Clay County Contract #2023/2024-284: \$10,723.50</b>				Product Subtotal:		\$203,746.50	
				Electronic of Signed & Sealed Engineering:		\$3,950.00	
Freight: Prepaid    Ship Method: Best Way    FOB: Destination    Weight: 9,220 lbs    Freight Charge						\$19,980.00	
				<b>Landscape Structures Total:</b>		<b>\$227,676.50</b>	

**Vendor:** LSI SkyWays
 **Proj Drawings:** 21369-4-3 2025.1
 604992

Class	Part No	Qty	Description	Unit Price	Disc	Net Price	Ext Price
Custom	CP037293	1 EA	Skyways Single Post Pyramid - 1 Columns + 1 Hdpe Top / 14' X 14' - 15' Entry / 12" Surfacing / Rapid Release Included / Max 115 Mph - 10 Psf	8,945.00	-5.0%	8,497.75	8,497.75
Shade	CP037292	2 EA	SkyWays Single Post Pyramid 1 Columns + 1 HDPE Top / 12' x 12' - 15' Entry / 12" Surfacing / Rapid Release Included / Max 115 MPH - 10 PSF	7,945.00	-5.0%	7,547.75	15,095.50

	IP227369G-001	1 EA	SkyWays Hip 24'x24' Shade 12' Entry Height w/Rapid Release	10,885.00	-5.0%	10,340.75	10,340.75
Custom	CP000487A-001	1 EA	Dtr Pb Skyways 40ft Dia. 13-post Netplex Shade	48,195.00	-5.0%	45,785.25	45,785.25
Discount per the Clay County Contract #2023/2024-284: \$4,195.75				Product Subtotal:		\$79,719.25	
				Electronic of Signed & Sealed Engineering:		\$5,550.00	
Freight: Prepaid    Ship Method: Best Way    FOB: Destination    Weight: 6,440 lbs    Freight Charge						\$6,426.00	
				LSI SkyWays Total:		\$91,695.25	
Vendor:	Engineered Wood Fiber supplied by Rep Services			Proj Drawings: 21369-4-3 2025.1			604996
Class	Part No	Qty	Description	Unit Price	Disc	Net Price	Ext Price
Surfacing	EWF-CHARLOTTE COUNTY	405 EA	Engineered Wood Fiber	64.00	-5.0%	60.80	24,624.00
Discount per the Clay County Contract #2023/2024-284: \$1,296.00							
Freight: Prepaid    Ship Method: Best Way    FOB: Destination    Freight Charge:						Included	
Engineered Wood Fiber supplied by Rep Services Total:						\$24,624.00	
Vendor:	Polygon			Proj Drawings: Engr-Permit			602521
Class	Part No	Qty	Description	Unit Price	Disc	Net Price	Ext Price
Shelters	22499R0	2 EA	Polygon Shelter Model: SQR13 Primary Roof: Multi-Rib Secondary Roof: N/A Number of Columns: 4 Eave Height (UPB): 7.5' Upper Roof Slope: 6/12 Electrical Cutout: 2 Electrical Access: Yes Ornamentation: N/A Lightning Protection: N/A Anchor Bolts Included 2023 Florida Building Code 8th Edition Engineering to comply with HVHZ: N/A	18,799.00	-5.0%	17,859.05	35,718.10
Discount per the Clay County Contract #2023/2024-284: \$1,879.90				Product Subtotal:		\$35,718.10	
				Electronic of Signed & Sealed Engineering:		\$1,000.00	
Freight: Prepaid    Ship Method: Best Way    FOB: Destination    Freight Charge:						\$5,602.50	
				Polygon Total:		\$42,320.60	
Vendor:	Polygon			Proj Drawings: Engr-Permit			602522
Class	Part No	Qty	Description	Unit Price	Disc	Net Price	Ext Price
Shelters	22500R0	1 EA	Polygon Shelter Model: REK24x44 Primary Roof: Multi-Rib Secondary Roof: N/A Number of Columns: 4 Eave Height (UPB): 7.5' Upper Roof Slope: 4/12 Electrical Cutout: 2 Electrical Access: Yes Ornamentation: N/A Lightning Protection: N/A Anchor Bolts Included 2023 Florida Building Code 8th Edition Engineering to comply with HVHZ: N/A	65,383.26	-5.0%	62,114.10	62,114.10
Discount per the Clay County Contract #2023/2024-284: \$3,269.16				Product Subtotal:		\$62,114.10	
				Electronic of Signed & Sealed Engineering:		\$1,000.00	
Freight: Prepaid    Ship Method: Best Way    FOB: Destination    Freight Charge:						\$7,546.50	
				Polygon Total:		\$70,660.60	
General Terms of Sale and Proposal Summary							
Consolidated Invoice Required				Product:		\$417,421.95	
				Freight:		\$39,555.00	
				Proposal Total:		\$456,976.95	

The Clay County Contract #2023/2024-284 provides a 2% discount on iMulch products. Installation is included in the price of the product.

The Clay County Contract #2023/2024-284 provides a 2% discount on LSI product. The maximum price for installation is 75% of the product price. (Installation does not include site prep, slabs, footings or engineering).

The Clay County Contract #2023/2024-284 provides a 2% discount on Porter/Poligon product. The maximum price for installation is 75% of the product price. (Installation does not include site prep, slabs, footings or engineering).

The Clay County Contract #2023/2024-284 provides a 2% discount on LSI SkyWays product. The maximum price for installation is 75% of the product price. (Installation does not include site prep, slabs, footings or engineering).

The Clay County Contract #2023/2024-284 provides a 2% discount on VitriTurf product. Installation is included in the price of the product.

**Basis of Proposal:**

Our equipment only offer is based upon Rep Services design 21369-4-3 2025.1 as interpreted from sheets C-300 and H-205. It does not contain any pricing for items labeled "future shade structure."

Offloading equipment and installation is excluded on this proposal.

If a owner controlled insurance program (OCIP) is required, add 2% to the proposal total.

If a bond is required, add 3% to proposal total.

Also, please be aware that we generate separate invoices for product at the time of delivery, then we invoice for installation upon completion. This is the customary approach in construction and eliminates sales tax on installation services. If your project should include products from multiple manufacturers, be advised that the products will be invoiced separately.

**Estimated project completion schedule**

*(This schedule starts when all needed information to direct engineering has been gathered.)*

8 Weeks: Engineering

4 Weeks: Permitting/Submittal Approval

16 Weeks Longest manufacturing lead time. (Typical for scheduling.)

1 Week Shipping

29 Weeks TOTAL

*Note that RSI is committed to do all it can to meet the needs of your project.*

**Landscape Structures:**

Color selection to be made at time of color submittal approval

**SkyWays Shade by LSI:**

SkyWays units are designed to meet 2023 Florida Building Code 8th Edition and ASCE 7-22.

Note that the fabric is to be removed by the owner should winds exceed 75MPH. Fabric should be removed in the event of a hurricane.

The high-density polyethylene fabric is flame retardant conforming to NFPA 701 and ASTM E84 per FBC 3105.3.1.

Color selection to be made at time of color submittal approval.

**Poligon by PorterCorp:**

- Porter units are designed to meet 2023 Florida Building Code 8th Edition.
- Please provide Building Department permit application requirements including Risk Category.
- The following certificates are available:
  - Miami-Dade County Certificate of Competency No. 23-0915.11
  - PCI (Powder Coating Institute) 4000 Certified
  - American Institute of steel construction quality management systems certified
- Four sets of signed and sealed drawings and calc books for building permitting will be provided. If additional sets of drawings and calc books are required, additional fees will apply.

**Electrical Cutout:** Selections to be made at time of electrical cut out submittal approval

**Color Selection:**

To be made at time of color submittal approval

Can find standard roofing and frame color selections here: <https://poligon.com/shelter-option/frame-roof-colors/>

Non-Standard colors and finishes are available at an additional charge

**Warranty**

The 10-year limited warranty excludes buildings erected at sites where salt air, corrosive environment, high humidity, or sprinkler systems come in contact with the shelter.

Failure to maintain the finished system with annual touch-ups and documented maintenance procedures will void the limited warranty.

See Poligon warranty document for full details and terms.

**Engineered Wood Fiber:**

- Rough Grade: To be established by others
- Product: Made from 100% wood fibers cut to one-to-two-inch lengths.
  - \*\*\* IPEMA CERTIFIED ASTM F1292-13 Standard Specification for Impact Attenuation of Surface Systems Under and Around Playground Equipment and ASTM F2075-10a Standard Specification for Engineered Wood Fiber for Use as a Playground Safety Surface Under and Around Playground Equipment.
  - \*\*\* This is a natural product. Particle size, texture and color may vary from a tan to a dark brown due to the natural conditions of the environment.
  - This proposal is for Engineered Wood Fiber playground surfacing delivered to the site
- Installation: Owner or Owner's contractor is responsible for:

- Accuracy of project dimensions and product quantities prior to ordering.
- Drainage is extremely important to the long-term performance of your playground surfacing. A minimum of a 12" depth of surfacing material must be always maintained.
- NOTE: Installation scopes do not include fall height testing.

Freight prices are subject to an energy/fuel surcharge if implemented between the time of quote and placement of order.

**Time Limitations Holding Prices Firm:**

Orders are shipped within our manufacturer's standard lead times. Requests for delayed shipping may result in additional costs due to increases in freight, material costs or other factors. To secure the prices on this proposal, the offer must be accepted prior to the expiration date noted.

If, during the performance of this contract, the price of a product increases 3% or more as documented by factory quotes, invoices or receipts to contractor (Rep Services, Inc.) from the date of the contract signing the price of shall be equitably adjusted by an amount reasonably necessary to cover such price increases. Where the delivery of a product is delayed, through no fault of contractor (RSI) as a result of the shortage or unavailability of a product, contractor (RSI) shall not be liable for any additional costs or damages associated with such delay(s).

The undersigned warrants that he/she is an authorized representative of Charlotte County noted and has the requisite authority to bind Charlotte County and/o principal.

Accepted By:

Charlotte County

Company Name	Authorized By	Printed Name	Date
--------------	---------------	--------------	------

As Its: \_\_\_\_\_ (Title)





*landscape*  
structures

**G. C. Herring Park**

21369-4-3 2025.1 • 6.27.2025

**REP SERVICES, INC.**  
Experts at Play & Outdoor Spaces  
185 W. Jessup Avenue, Longwood, FL 32750

© 2025 Landscape Structures. All Rights Reserved





*landscape*  
structures

**G. C. Herring Park**

21369-4-3 2025.1 • 6.27.2025

**REP SERVICES, INC.**  
Experts at Play & Outdoor Spaces  
185 W. Jessup Avenue, Longwood, FL 32750

© 2025 Landscape Structures. All Rights Reserved





*landscape*  
structures

**G. C. Herring Park**

21369-4-3 2025.1 • 6.27.2025

**REP SERVICES, INC.**  
Experts at Play & Outdoor Spaces  
185 W. Jessup Avenue, Longwood, FL 32750

© 2025 Landscape Structures. All Rights Reserved





*landscape*  
structures

**G. C. Herring Park**

21369-4-3 2025.1 • 6.27.2025

**REP SERVICES, INC.**  
Experts at Play & Outdoor Spaces  
185 W. Jessup Avenue, Longwood, FL 32750

© 2025 Landscape Structures. All Rights Reserved





**G. C. Herring Park**

21369-4-3 2025.1 • 6.27.2025



© 2025 Landscape Structures. All Rights Reserved





*landscape*  
structures

**G. C. Herring Park**

21369-4-3 2025.1 • 6.27.2025

**REP SERVICES, INC.**  
Experts at Play & Outdoor Spaces  
185 W. Jessup Avenue, Longwood, FL 32750

© 2025 Landscape Structures. All Rights Reserved





landscape  
structures

G. C. Herring Park

21369-4-3 2025.1 • 6.27.2025

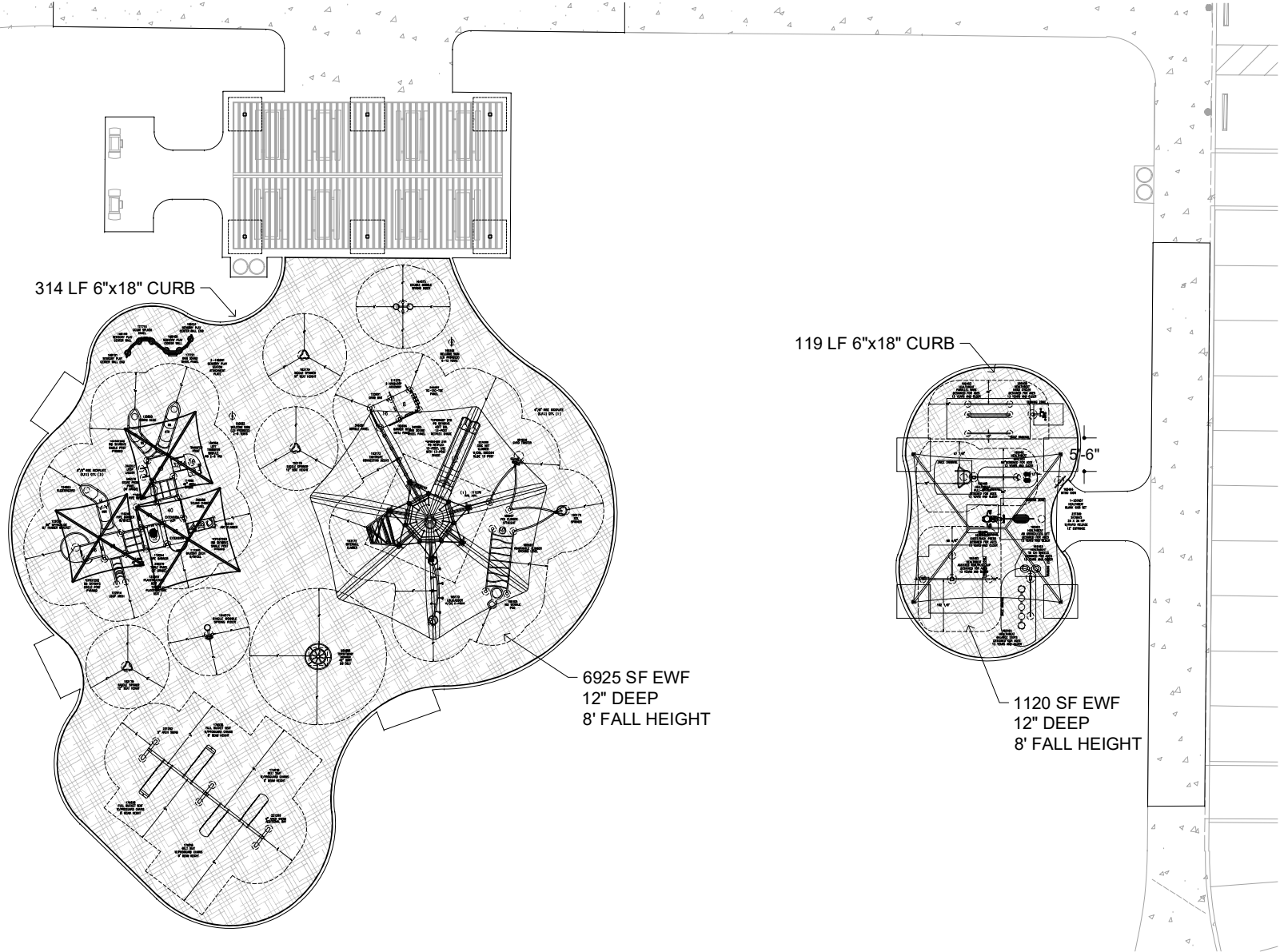
REP SERVICES, INC.  
Experts at Play & Outdoor Spaces  
185 W. Jessup Avenue, Longwood, FL 32750

© 2025 Landscape Structures. All Rights Reserved





DRAWN BY: KCM	<b>PG-2</b>
INSTALL PLAN	
TOTAL AREA: 8045 SF	
FALL HEIGHT: 8'	
BORDER: 433 LF CURB	
USER CAPACITY: 90	
SURFACING: 8045 SF EWF	
SUBGRADE ELEV.: -12" BFF	

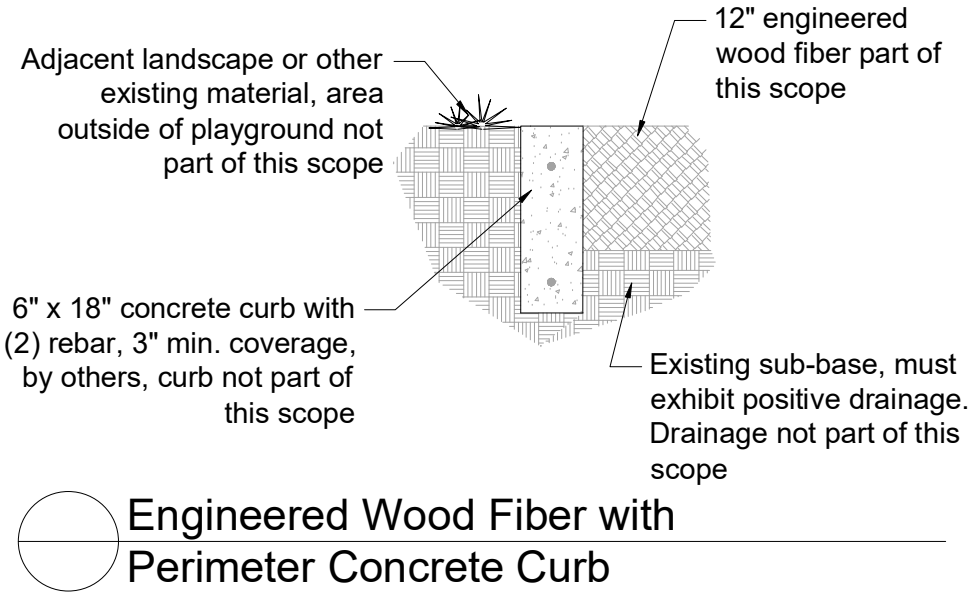


# G. C. Herring Park Renovation

Placida, FL  
 PROJECT: 21369-4-3 2025.1  
 NOT FOR CONSTRUCTION



<b>DRAWN</b> <b>BY: KCM</b>	<b>PG-3</b> INSTALL PLAN
<b>TOTAL AREA:</b> 8045 SF	
<b>FALL HEIGHT:</b> 8'	
<b>BORDER:</b> 433 LF CURB	
<b>USER CAPACITY:</b> 90	
<b>SURFACING:</b> 8045 SF EWF	
<b>SUBGRADE ELEV.:-12" BFF</b>	



G. C. Herring Park Renovation

Placida, FL  
PROJECT:21369-4-3 2025.1  
NOT FOR CONSTRUCTION

DRAWN BY: KCM	<b>PG-4</b>
FITNESS LAYOUT PLAN	
TOTAL AREA: 8045 SF	
FALL HEIGHT: 8'	
BORDER: 433 LF CURB	
USER CAPACITY: 90	
SURFACING: 8045 SF EWF	
SUBGRADE ELEV.: -12" BFF	

#### FITNESS NOTES:

- EQUIPMENT LOCATION TO BE FIELD VERIFIED PRIOR TO CONSTRUCTION
- BASE MUST EXHIBIT POSITIVE DRAINAGE IN ALL AREAS
- THIS FITNESS AREA AND EQUIPMENT IS DESIGNED FOR AGES 13+ YEARS
- IT IS THE MANUFACTURERS OPINION AND INTENT THAT THE USE AND LAYOUT OF THESE COMPONENTS CONFORM WITH THE AMERICAN SOCIETY FOR TESTING AND MATERIALS (ASTM) STANDARD ASTM F3101
- THE EQUIPMENT SHOWN IS TO BE CONSIDERED FITNESS EQUIPMENT ONLY. APPROPRIATE SIGNAGE IS STRONGLY RECOMMENDED. OUTDOOR FITNESS EQUIPMENT SHALL NOT BE PLACED WITHIN DEFINED CHILDREN'S PLAYGROUND AREAS AND SHALL BE SEPARATED FROM THE USE ZONES FOR PLAYGROUND EQUIPMENT BY FENCING, MOUNDS, PATHWAYS, LANDSCAPING OR OTHER BARRIERS.
- THE OWNER/OPERATOR SHALL INSTALL PROTECTIVE SURFACING IN ACCORDANCE WITH SPECIFICATIONS F1292 AND F1951, WHEN APPLICABLE (REF. ASTM F3101 STANDARD CONSUMER SAFETY PERFORMANCE SPECIFICATION FOR OUTDOOR FITNESS EQUIPMENT FOR PUBLIC USE, SECTIONS 7.16 AND 9.2.5 CURRENT REVISION).
- PROTECTIVE SURFACING MATERIAL MUST HAVE A CRITICAL HEIGHT VALUE TO MEET THE MAXIMUM FALL HEIGHT FOR THE EQUIPMENT AND BE ACCESSIBLE, WHEN APPLICABLE (REF. ASTM F3101).

#### ▲ WARNING

INSTALLATION OVER A HARD SURFACE SUCH AS CONCRETE, ASPHALT, OR PACKED EARTH MAY RESULT IN SERIOUS INJURY OR DEATH FROM FALLS.

#### ▲ WARNING

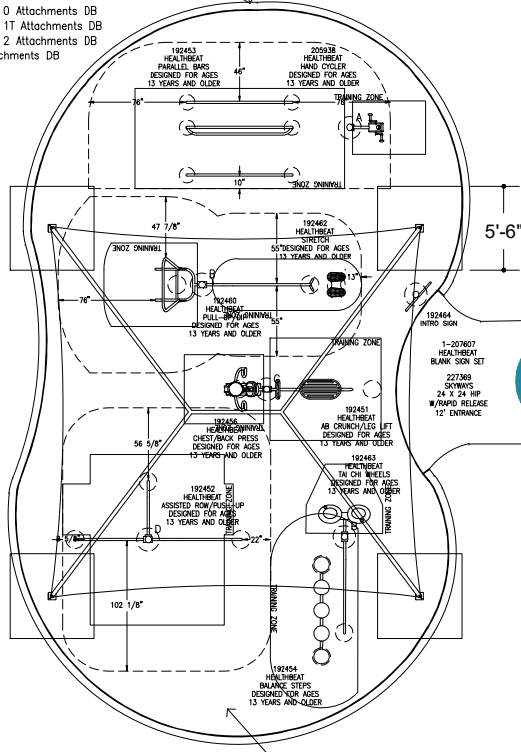
SURFACING AND PLAYSURFACES MAY BECOME **HOT** AND CAUSE BURNS. CHECK FOR HOT SURFACES PRIOR TO PLAYING ON THE PLAYGROUND.

\*SHADE FOOTERS ARE ESTIMATED BASED ON RECENT PRECEDENT\*  
FINAL FOOTER SIZES WILL NOT BE DETERMINED UNTIL TIME OF ENGINEERING

#### QTY. POST/ARCH LENGTHS

- |   |   |        |            |                           |
|---|---|--------|------------|---------------------------|
| 1 | A | 110.5" | Steel Post | w/2 and 0 Attachments DB  |
| 2 | B | 110.5" | Steel Post | w/2 and 1T Attachments DB |
| 1 | C | 110.5" | Steel Post | w/2 and 2 Attachments DB  |
| 1 | D | 110.5" | Steel Post | w/3 Attachments DB        |

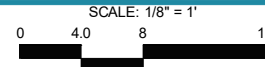
119 LF 6"x18" CURB



1120 SF EWF  
12" DEEP  
8' FALL HEIGHT

## G. C. Herring Park Renovation

Placida, FL  
PROJECT: 21369-4-3 2025.1  
NOT FOR CONSTRUCTION



**REP SERVICES, INC.**  
Experts at Play & Outdoor Spaces



W:\21369 Charlotte County - G. C. Herring Park Renovation\21369-4-3 2025.1\21369-4-3 2025.1.dwg, 6/30/2025 10:01:28 AM, kanaya