

PAL-24-05 (Legislative)

Z-24-15 (Quasi-Judicial)

(Transmittal Hearing BCC Land Use Meeting 01-28-2025 for
PAL-24-05 Only

Adoption Hearing BCC Land Use Meeting 04-22-2025
for PAL-24-05 and Z-24-15)

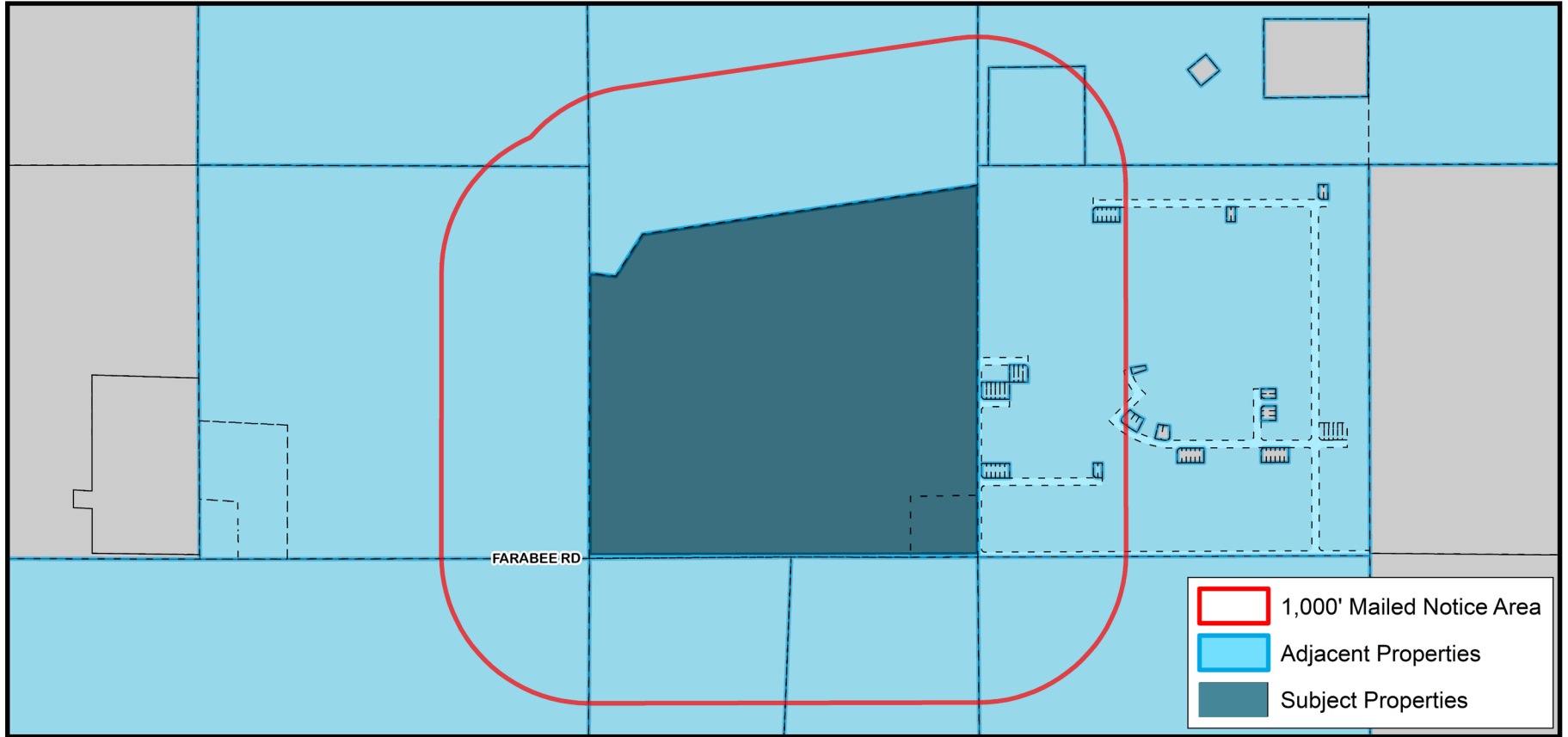
Farabee Mine and Shell, LLC



CHARLOTTE COUNTY
FLORIDA

Proposed Changes

- A Large-Scale Plan Amendment from Agriculture (AG) to Mineral Resource Extraction (MRE)
- A rezoning (Application Number Z-24-15) from Agriculture (AG) to Excavation and Mining (EM), which will be presented to the Board of County Commissioners on April 22, 2025
- Property located in Commission District I



**SUBJECT
PROPERTY**

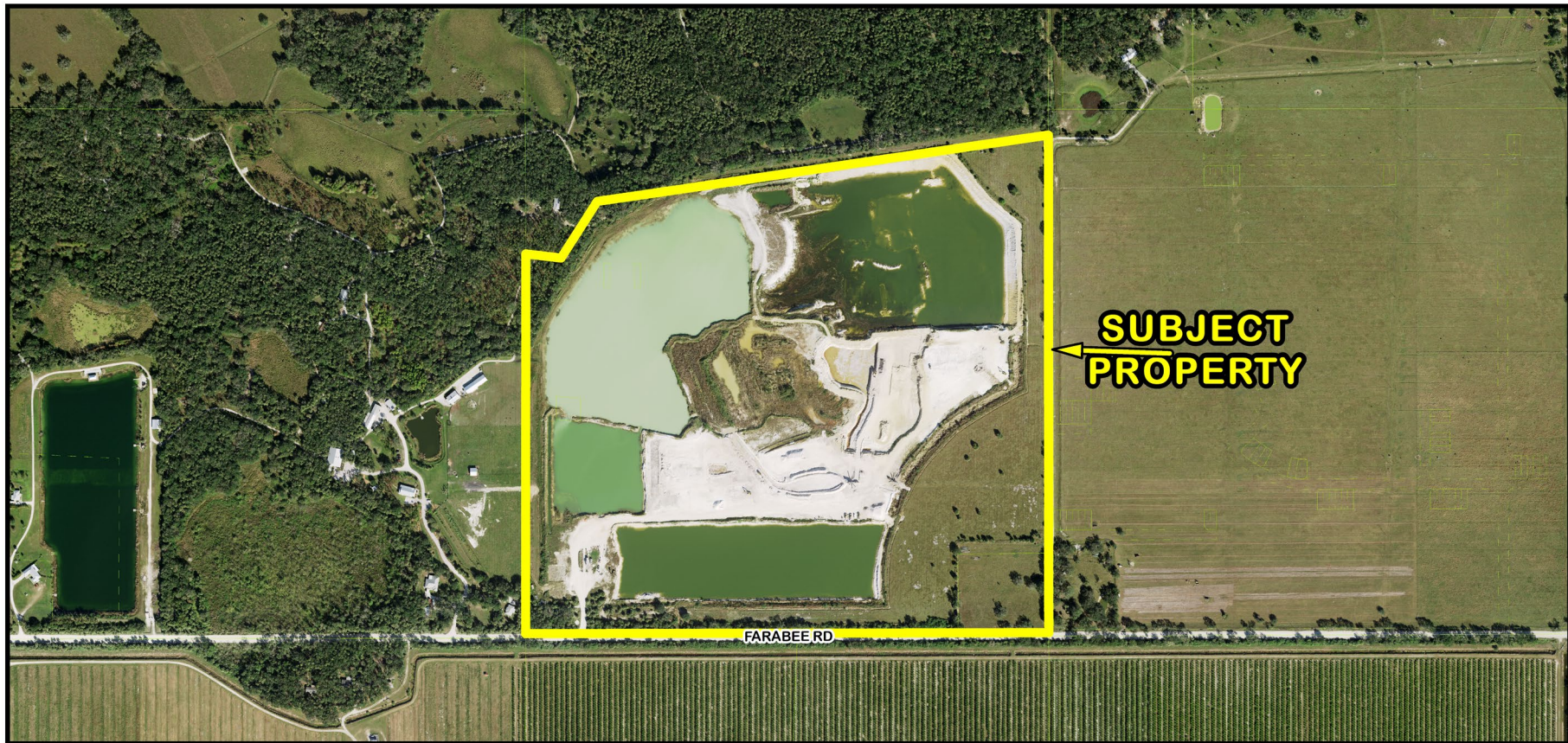


PAL-24-05 and Z-24-15 Location Map

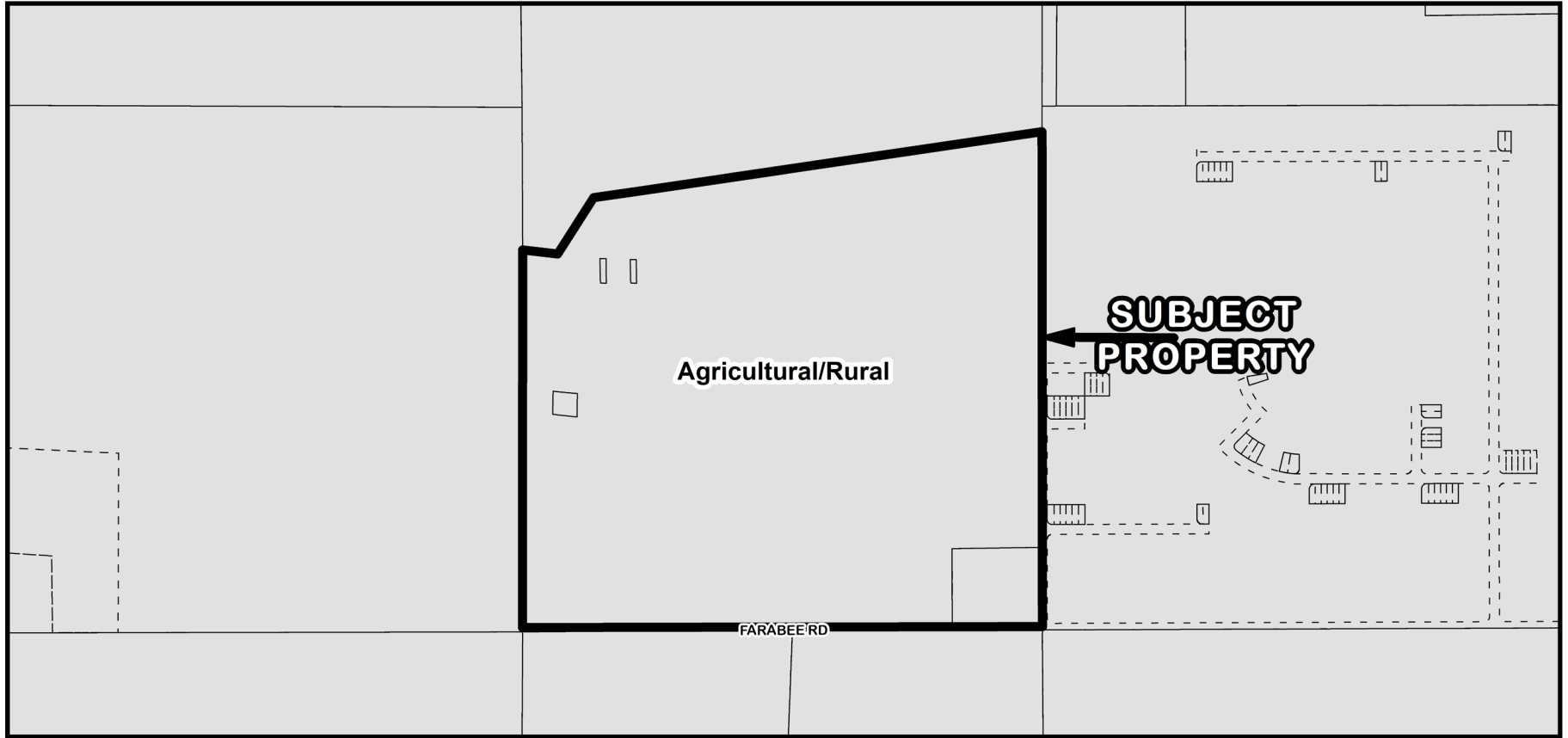


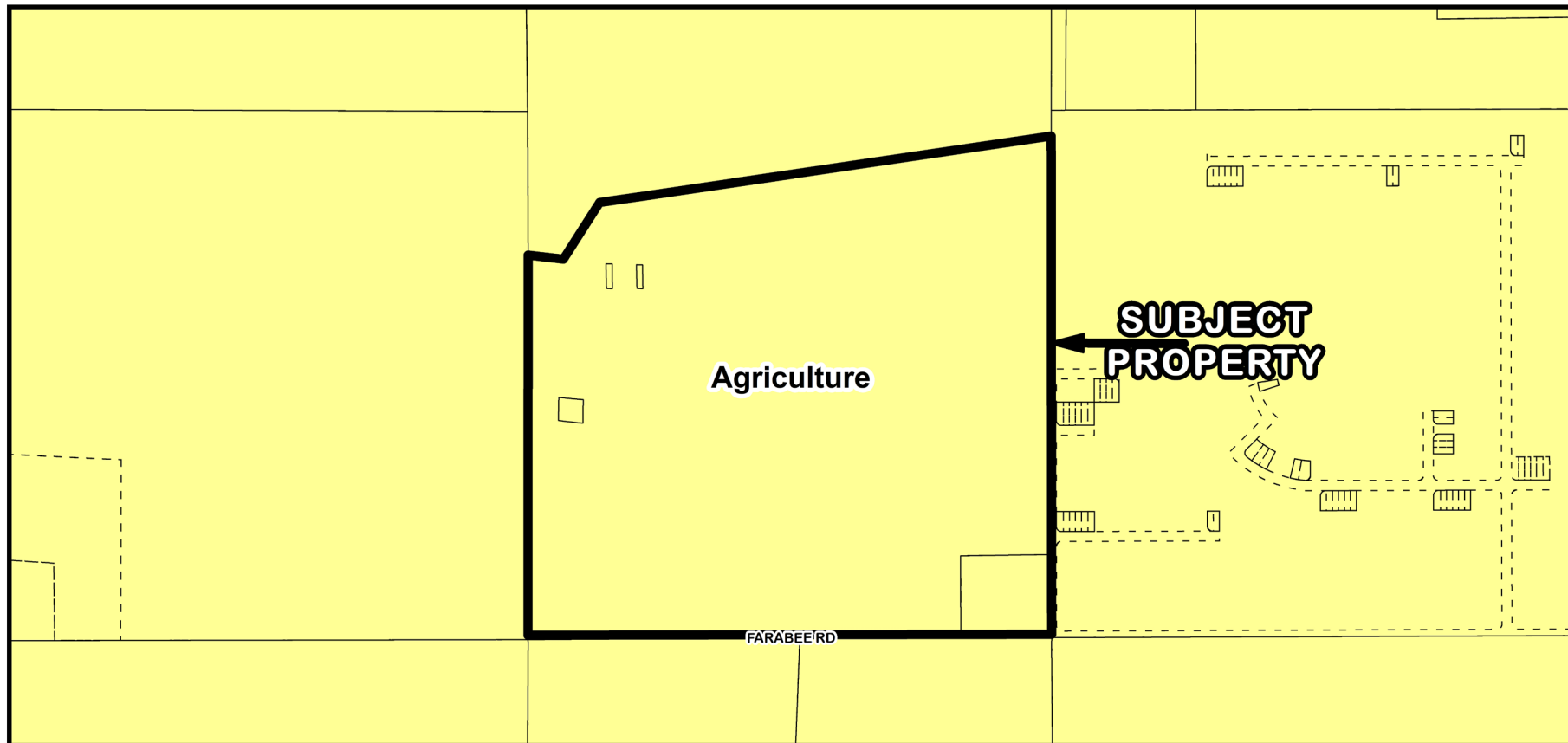


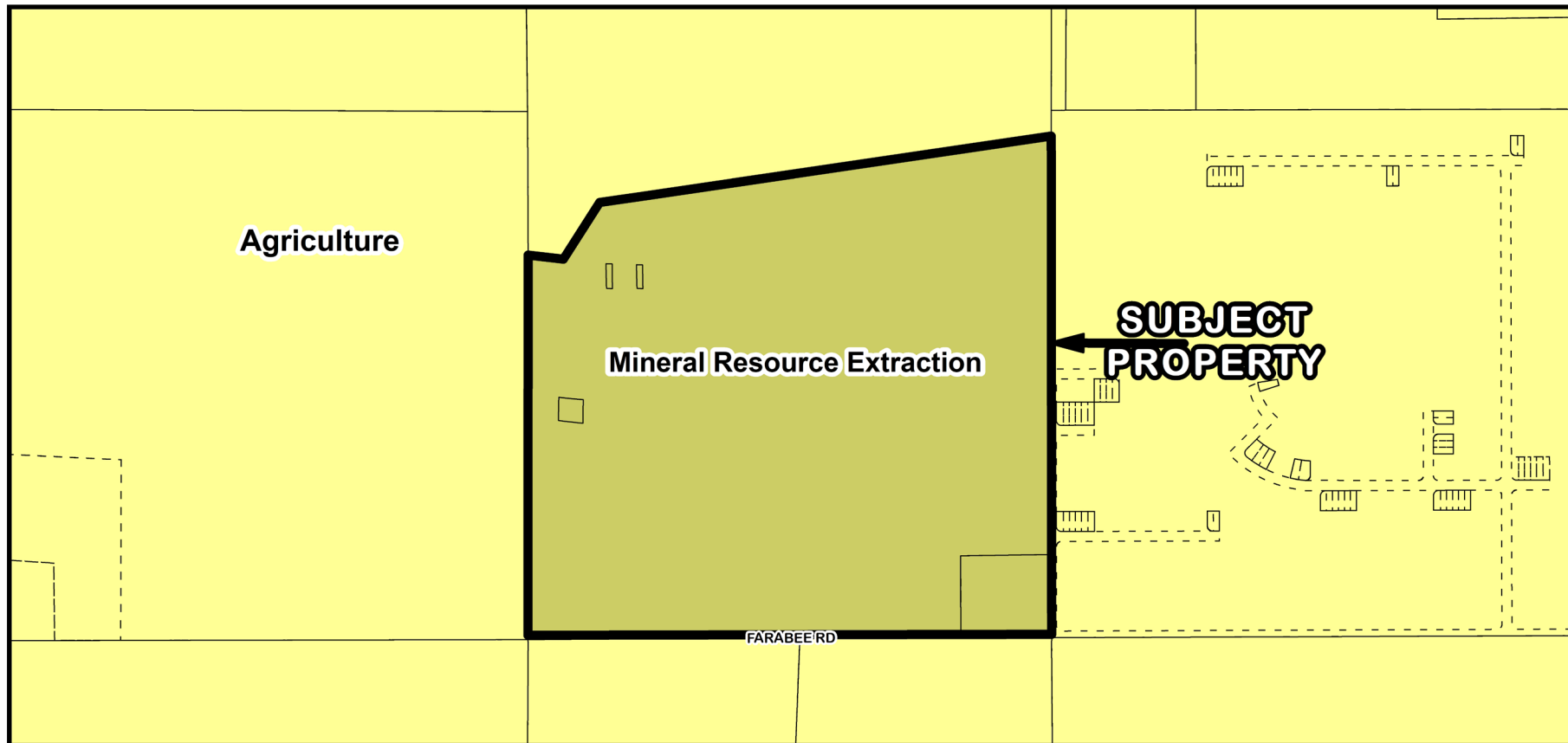
PAL-24-05 and Z-24-15 Area Image

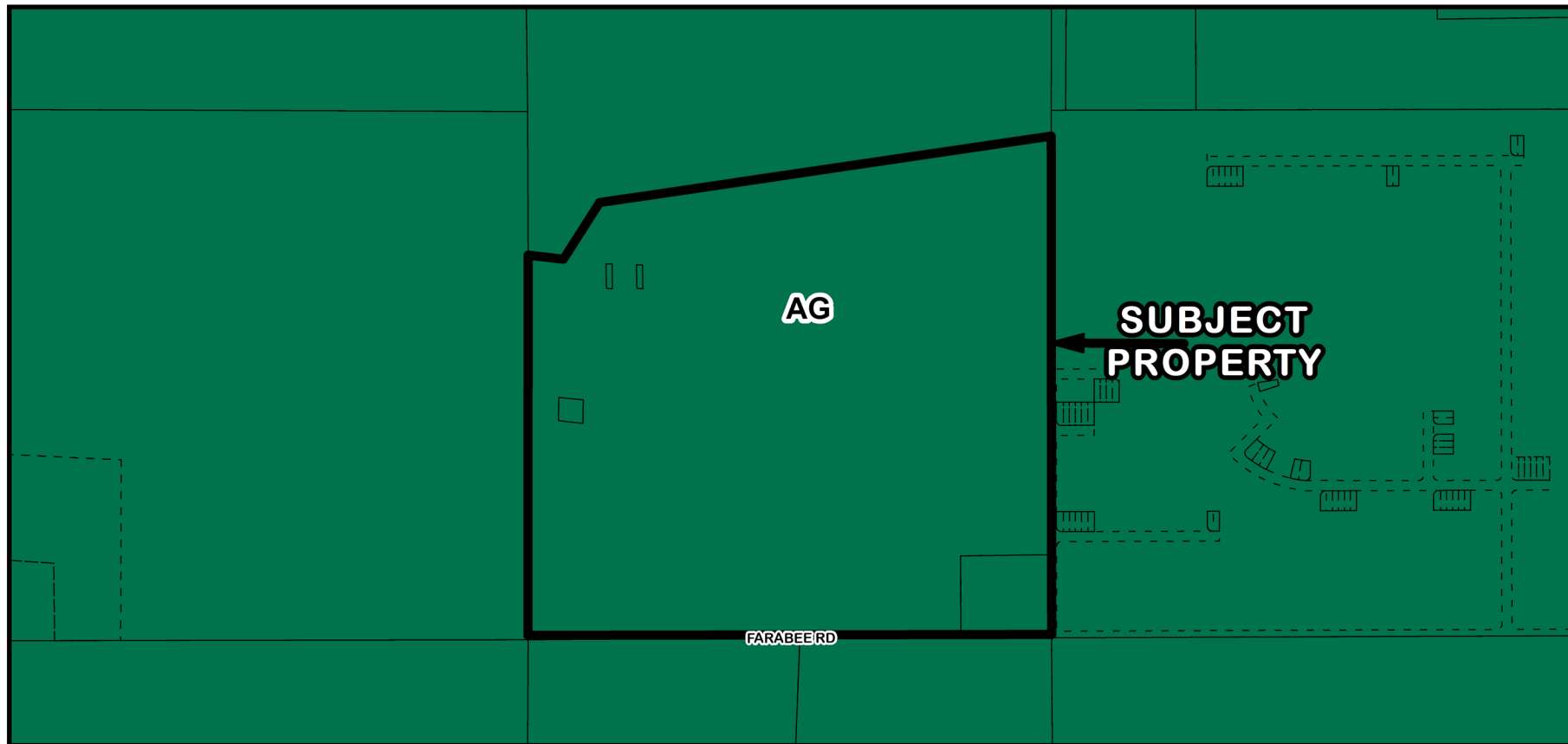


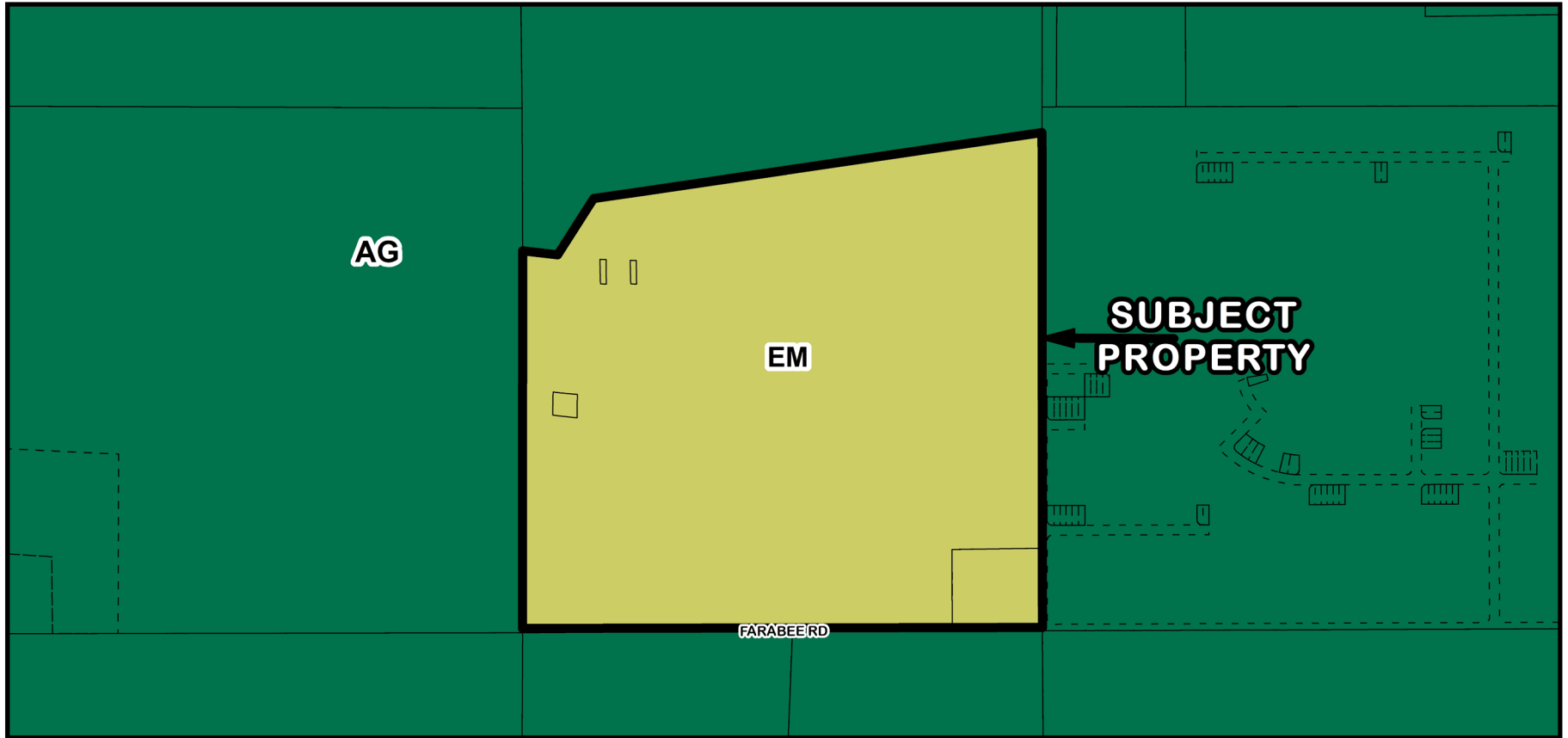
PAL-24-05 and Z-24-15 Area Image



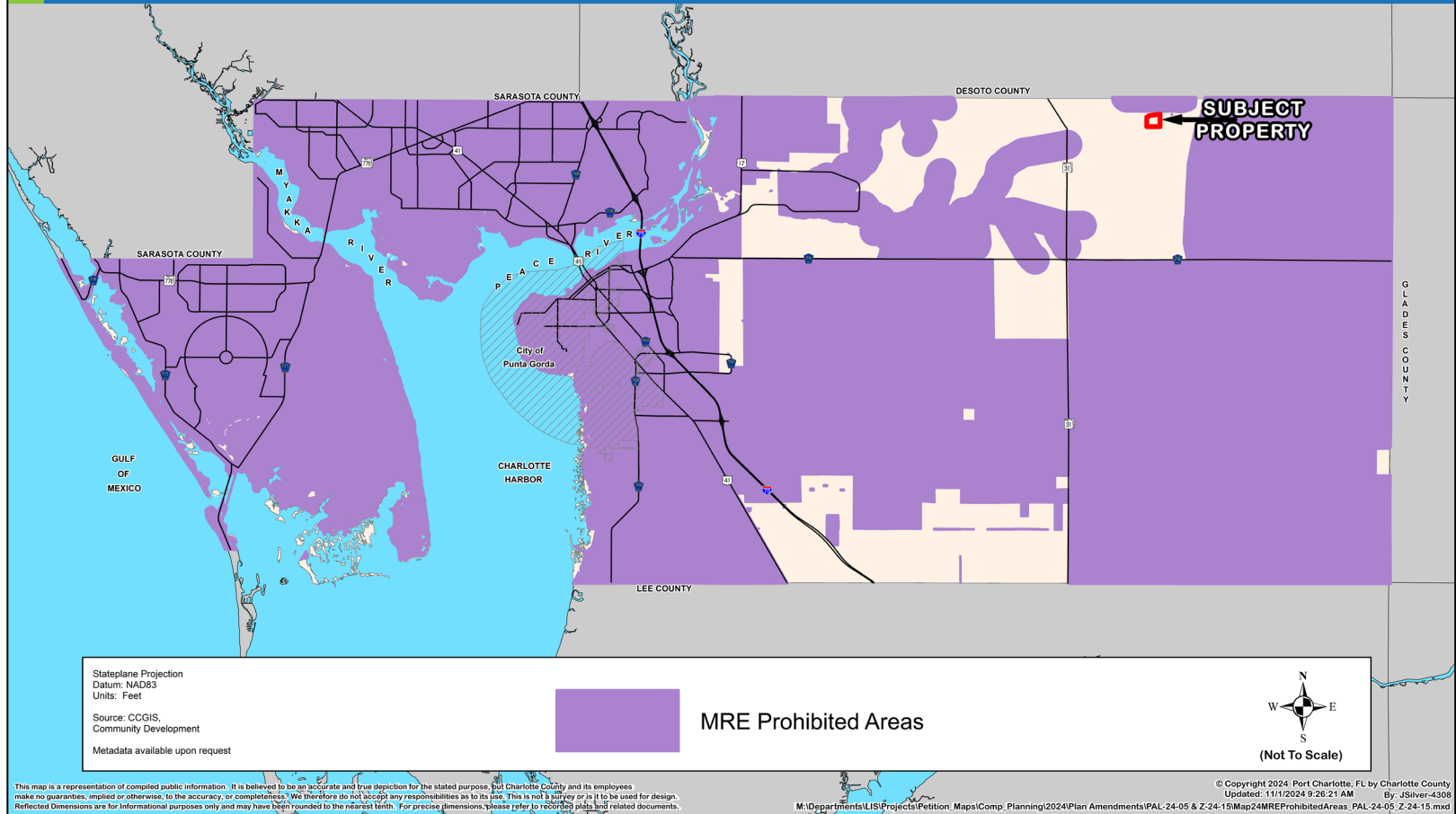






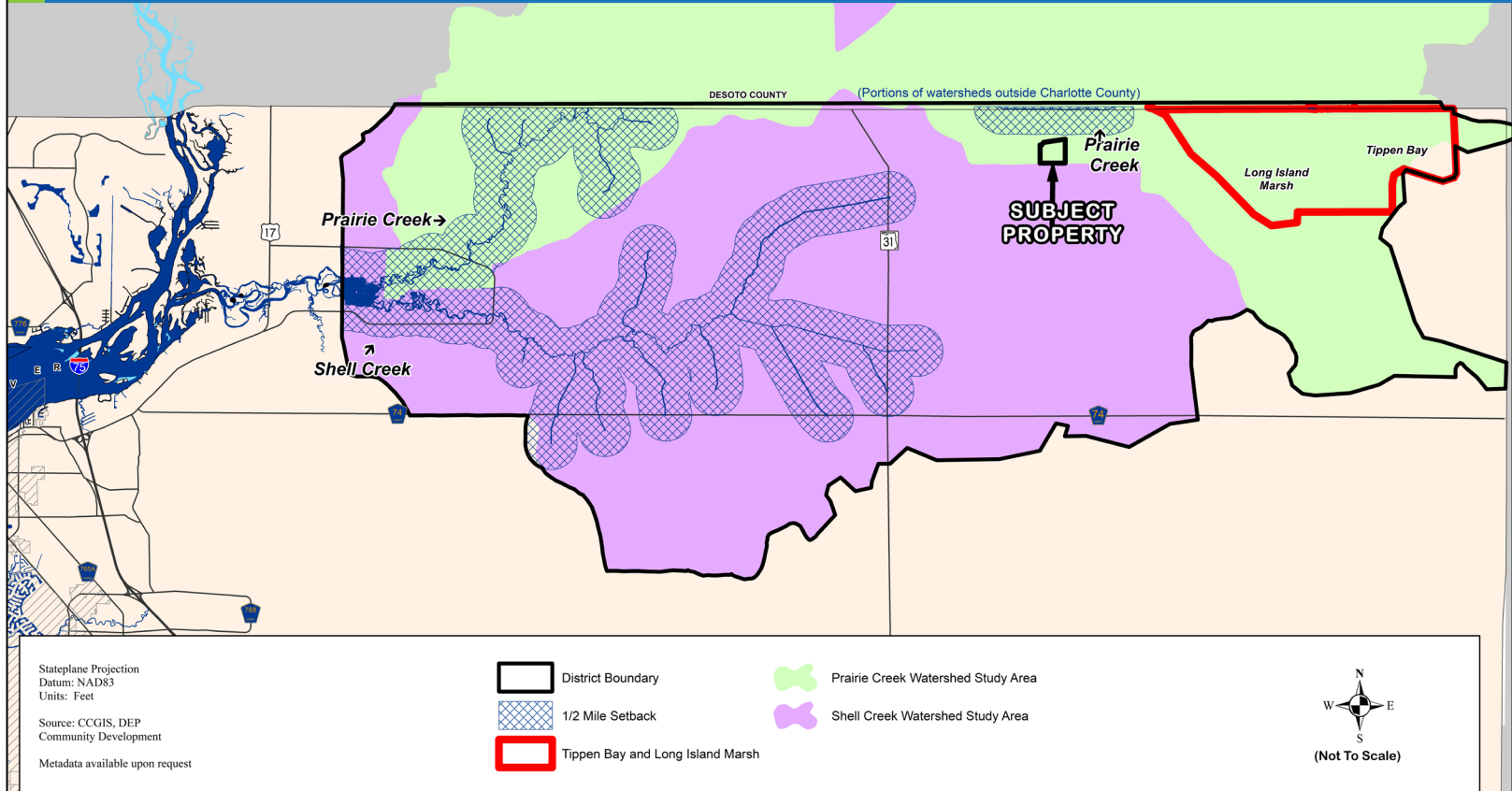


Map #24: MRE Prohibited Locations



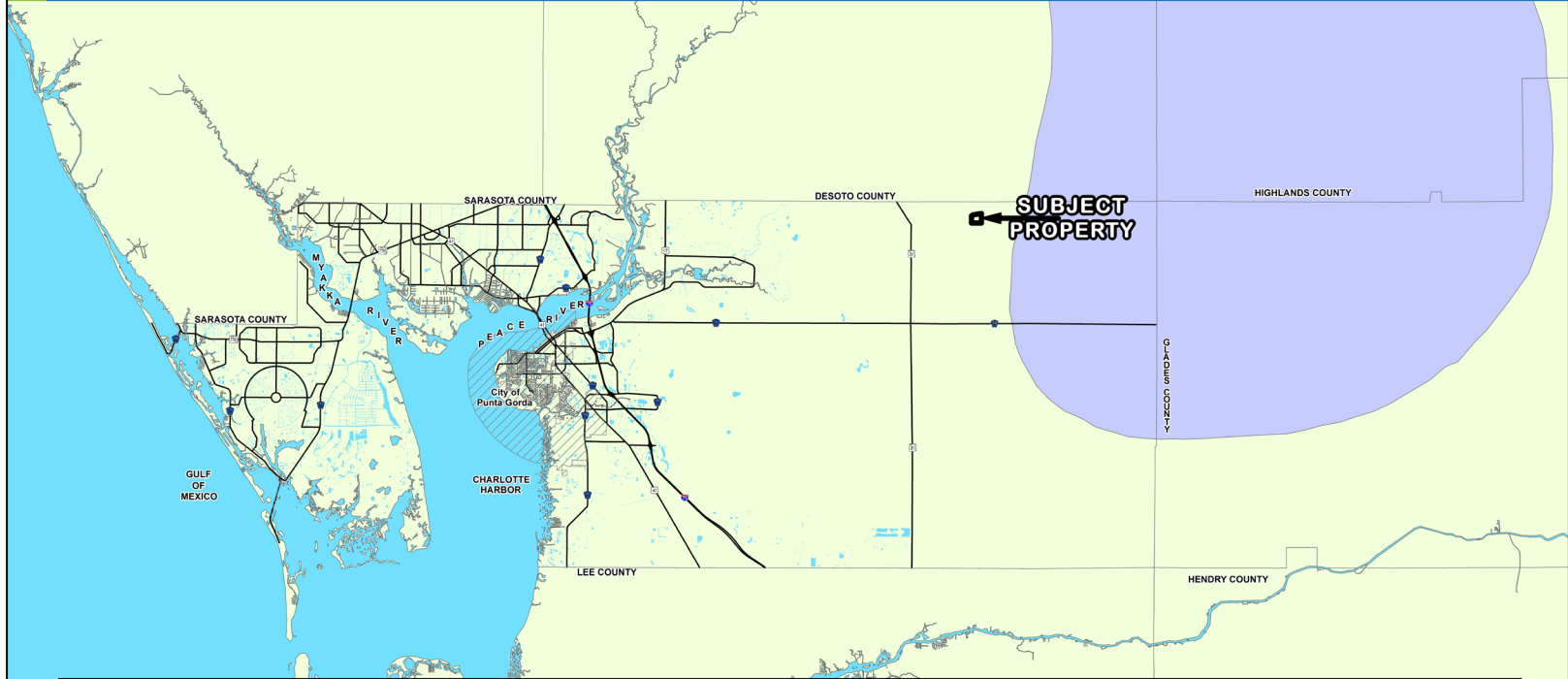
CHARLOTTE COUNTY

Future Land Use Map Series
Map #4: Watershed Overlay District



CHARLOTTE COUNTY

Future Land Use Map Series
Map #6: Prime Aquifer Recharge Areas



Stateplane Projection
Datum: NAD83
Units: Feet

Source: CCGIS, SFWMD,
SFWMD, Community Development

Metadata available upon request

No recharge to very low recharge (0.0 to 1.0 inches per year) to the Upper Florida Aquifer

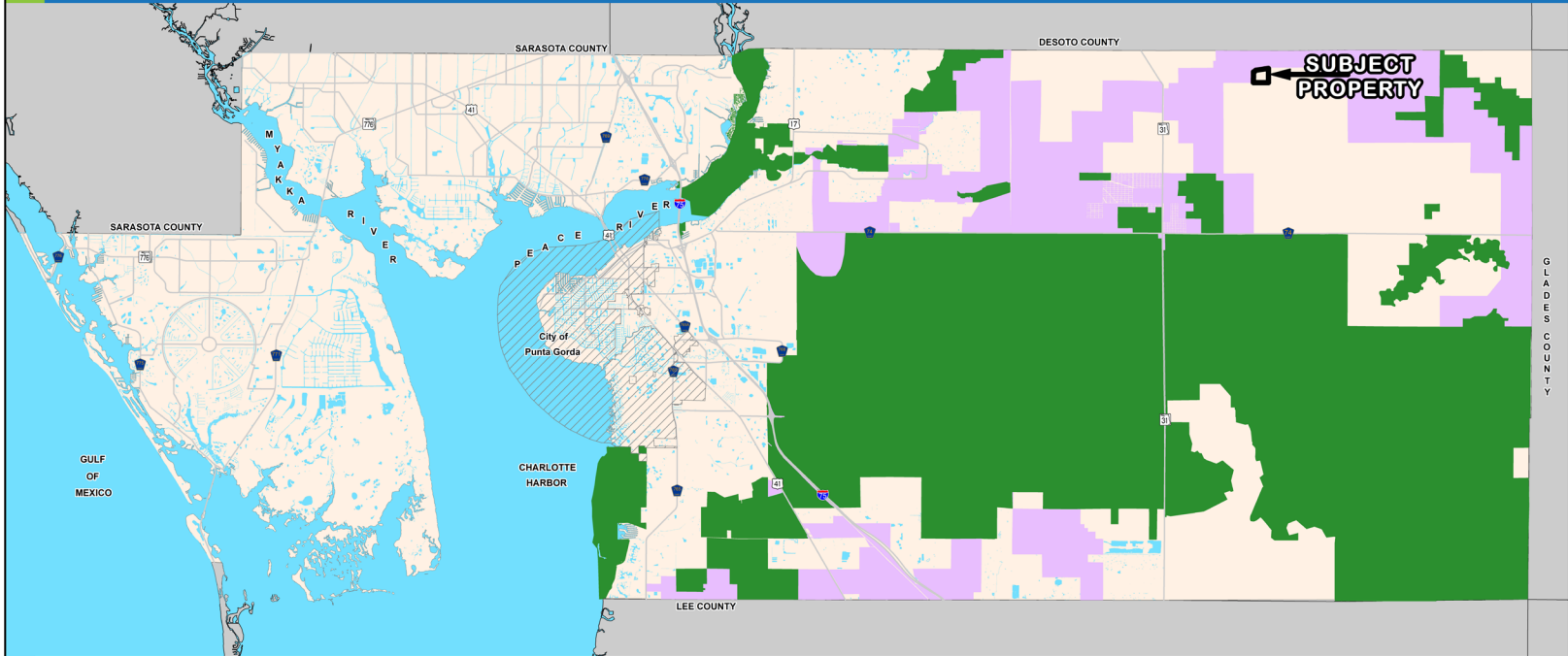
No discharge to very low discharge (0.0 to 1.0 inches per year) to the Upper Florida Aquifer

(Not To Scale)

CHARLOTTE COUNTY

Future Land Use Map Series

Map #22: Critical Wildlife Corridors



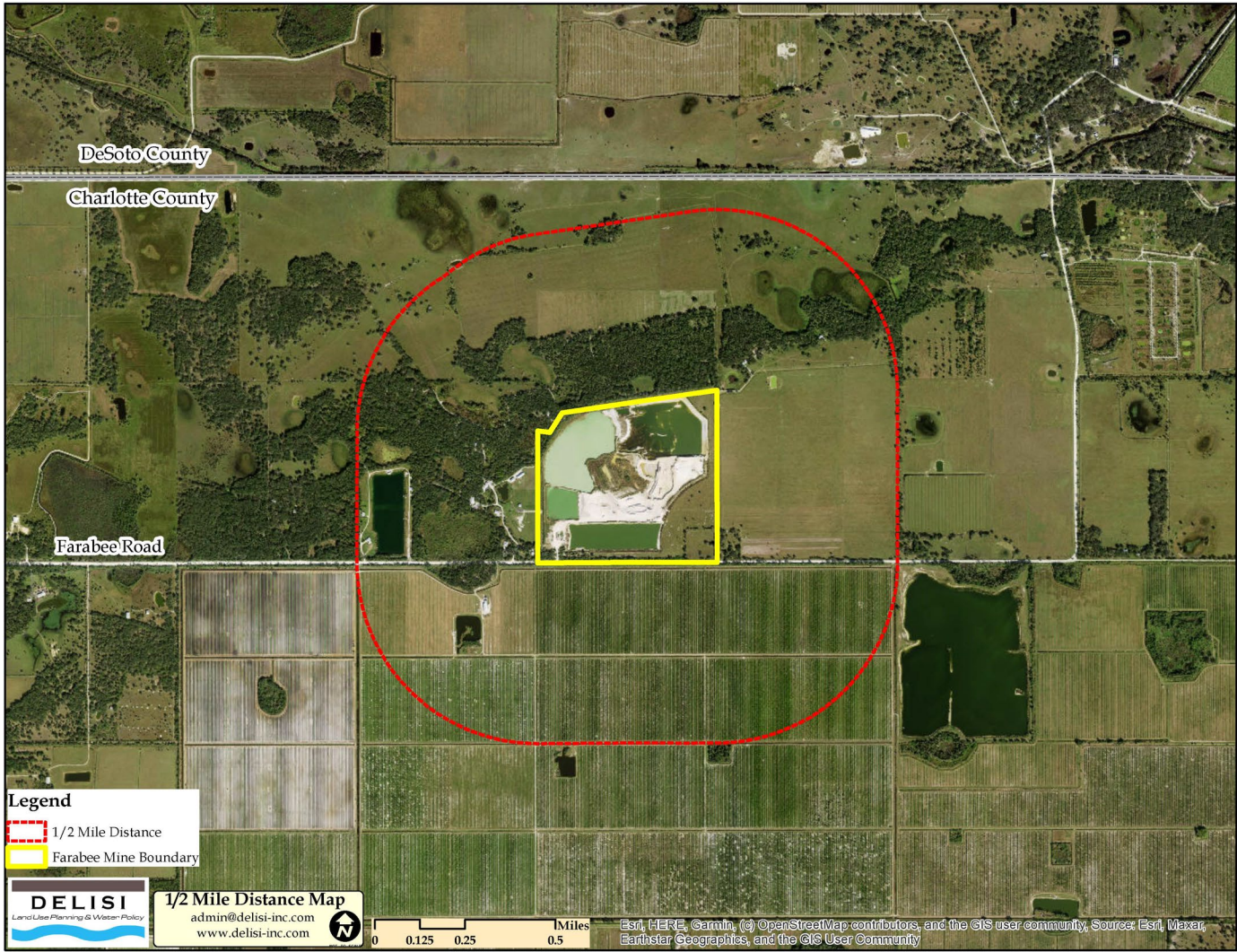
Stateplane Projection
Datum: NAD83
Units: Feet

Source: CCGIS
Community Development

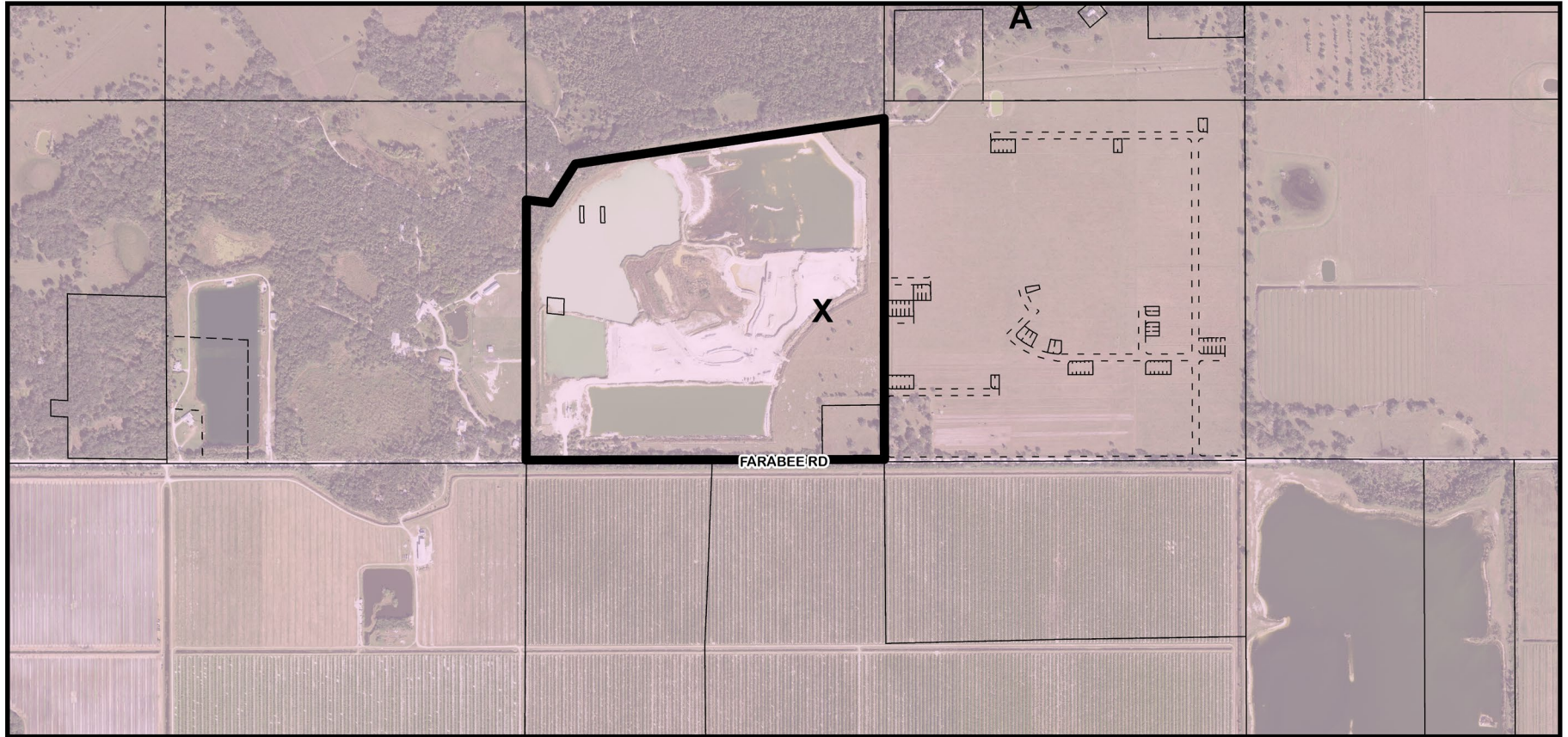
Metadata available upon request

Wildlife Corridor Critical Linkages Resource Conservation & Preservation









19 **PAL-24-05 and Z-24-15 Flood Zones (Subject Property - X Zone)**