

PAL-23-00005 (Legislative) Z-23-41-19 (Quasi-Judicial)

(Transmittal Hearing BCC Land Use Meeting 06-10-2025 for
PAL-23-00005 Only

Adoption Hearing BCC Land Use Meeting 09-09-2025
for PAL-23-00005 and Z-23-41-19)

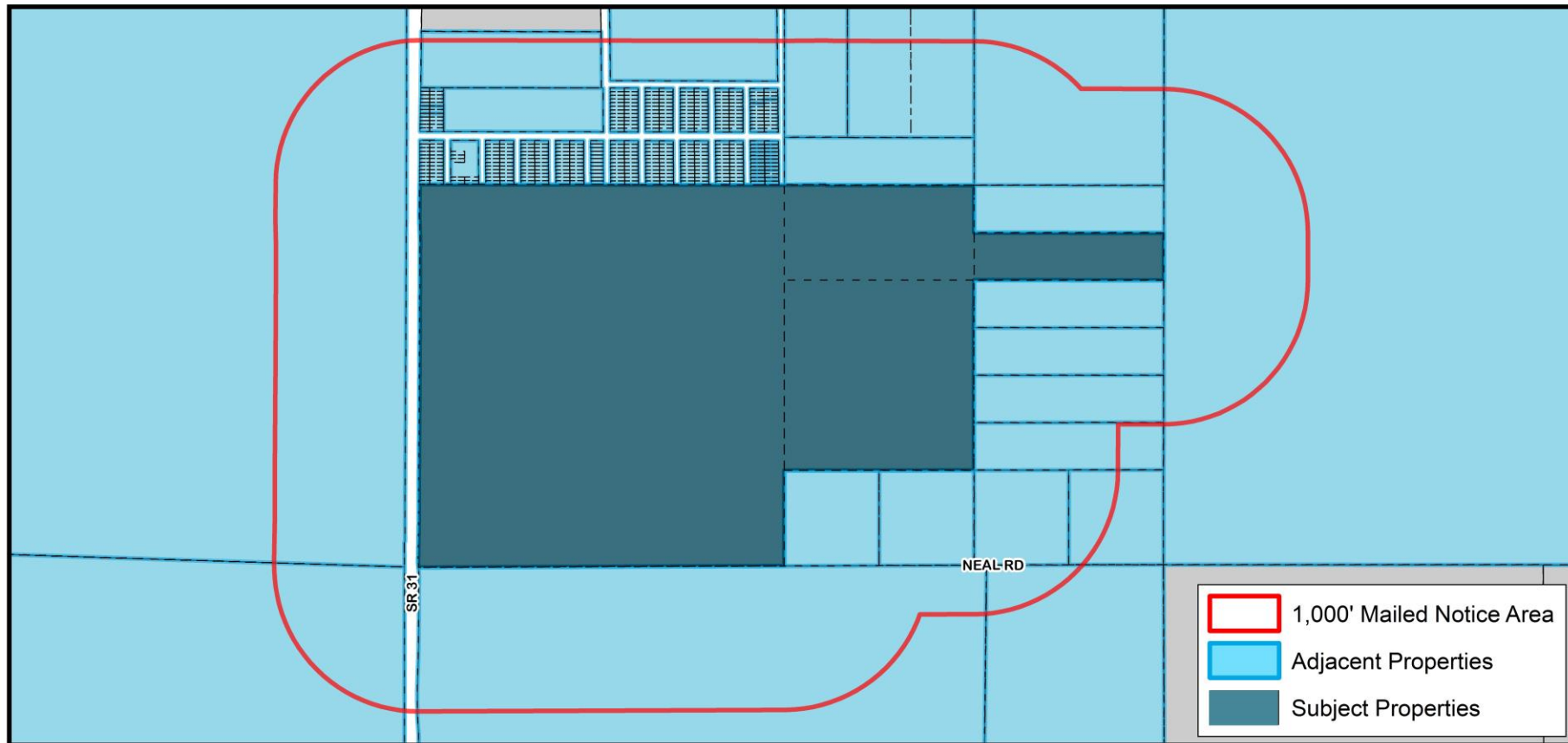
Lake Lonely, LLC

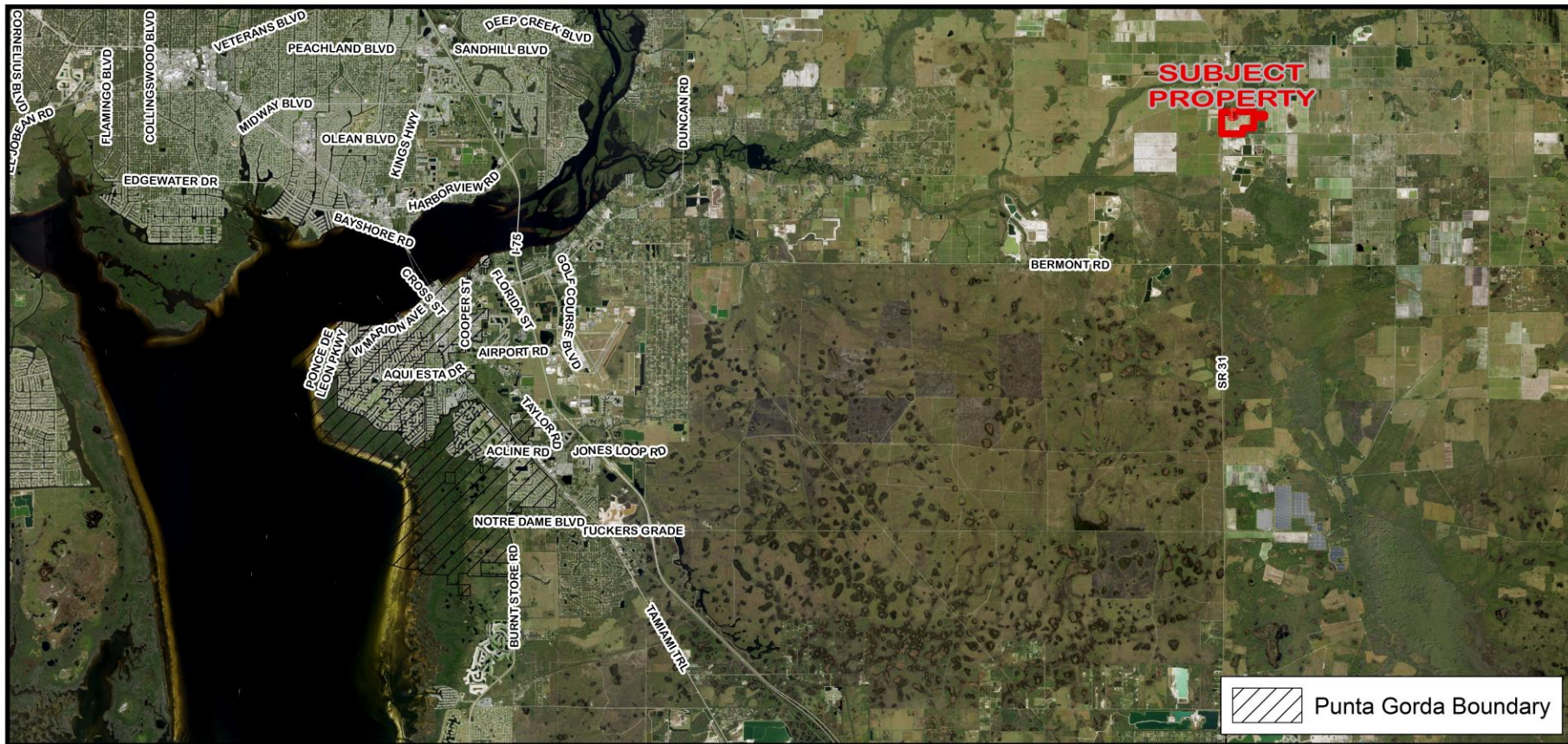


CHARLOTTE COUNTY
FLORIDA

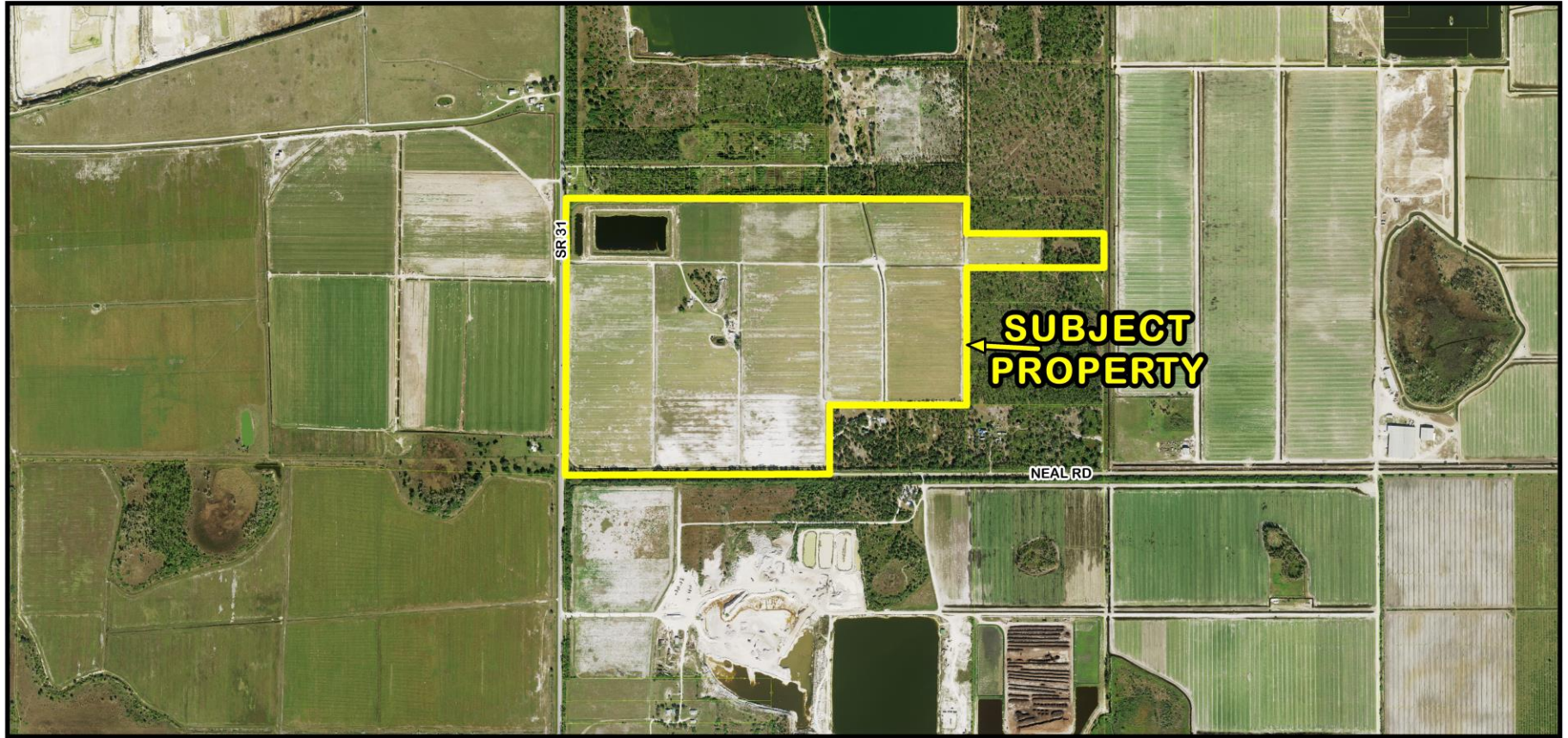
Proposed Changes

- A Large Scale Plan Amendment (PAL-23-00005) from Agriculture (AG) to Mineral Resource Extraction (MRE)
- A rezoning (Application Number Z-23-41-19) from Agriculture (AG) to Excavation and Mining (EM), which will be presented to the Board of County Commissioners on September 9, 2025
- Property located in Commission District I

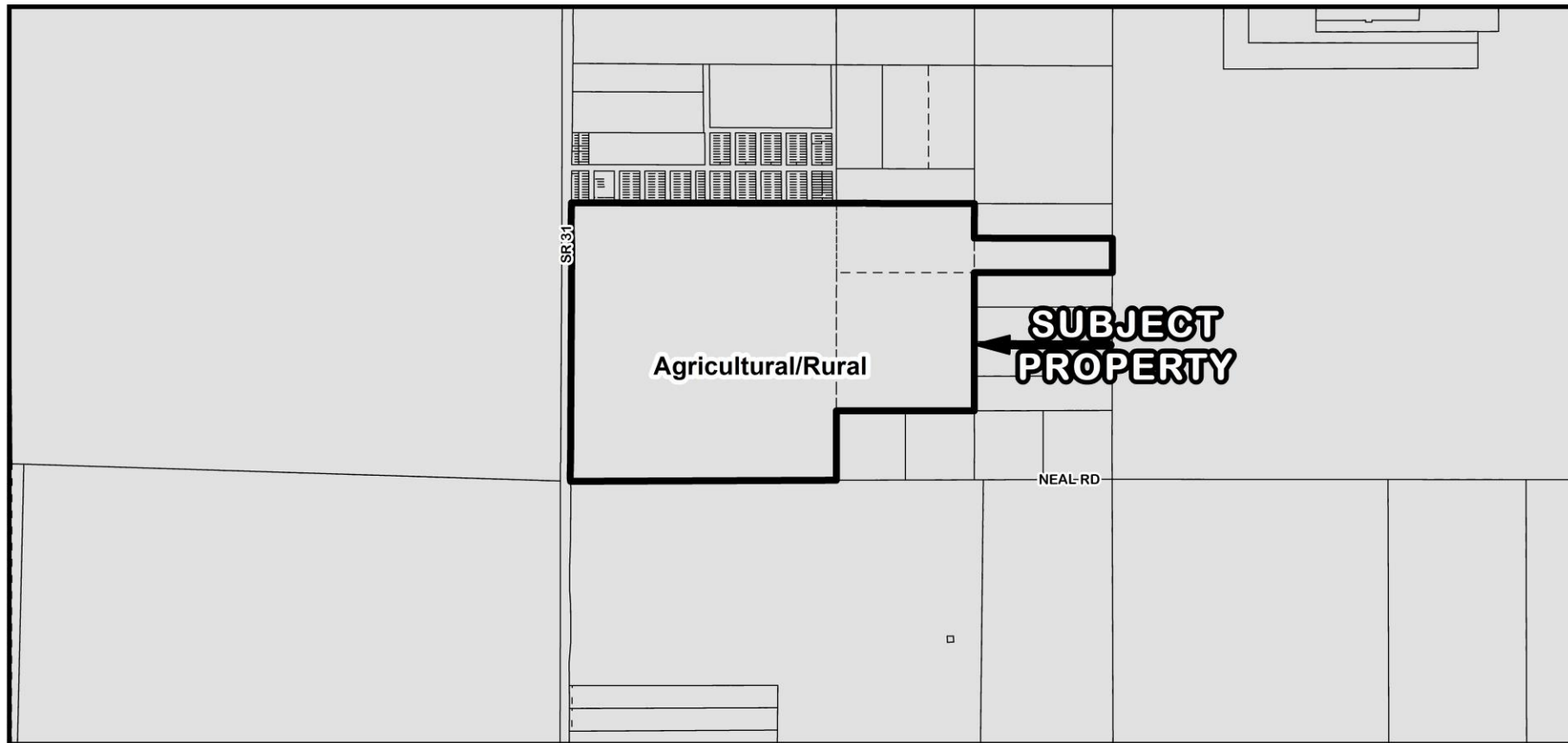




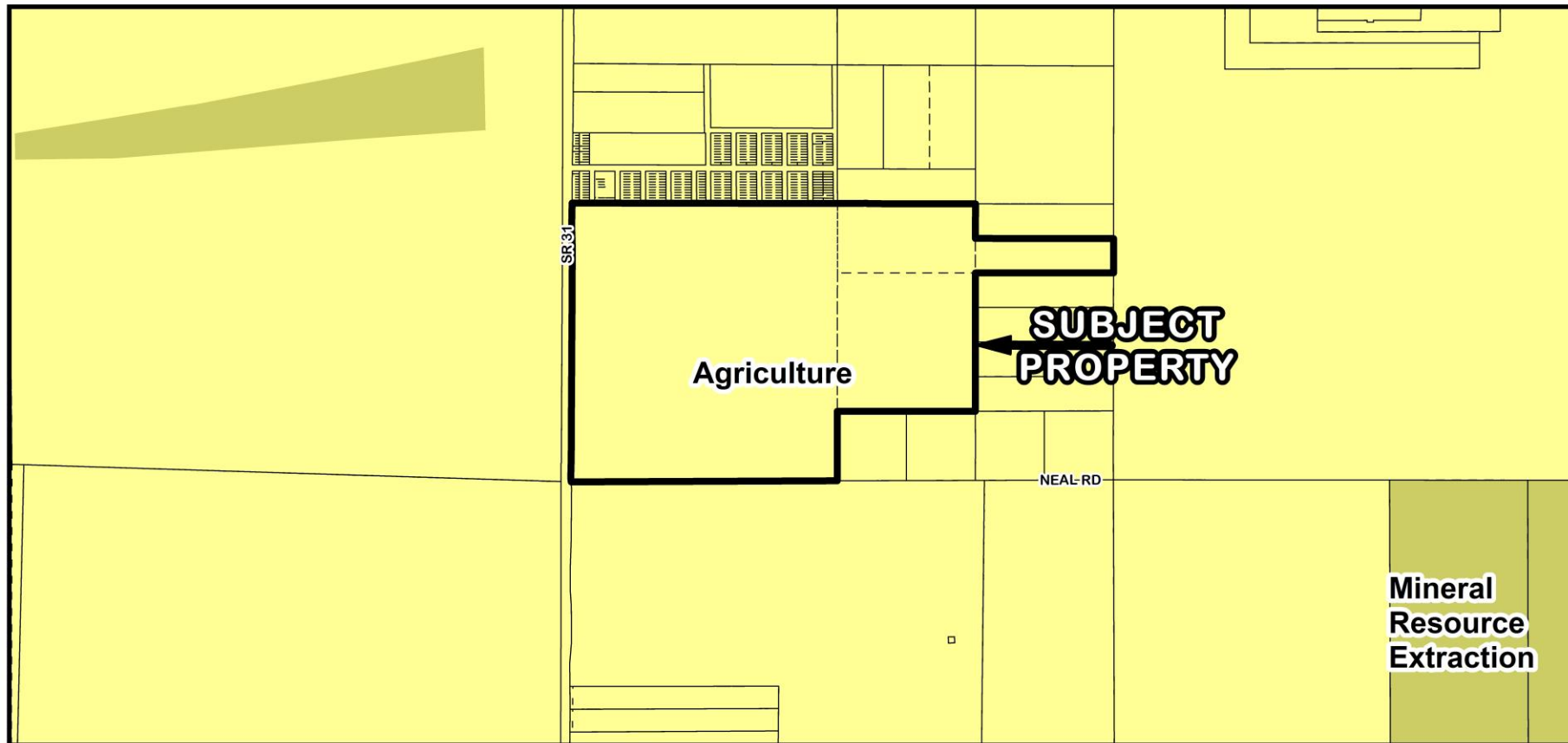


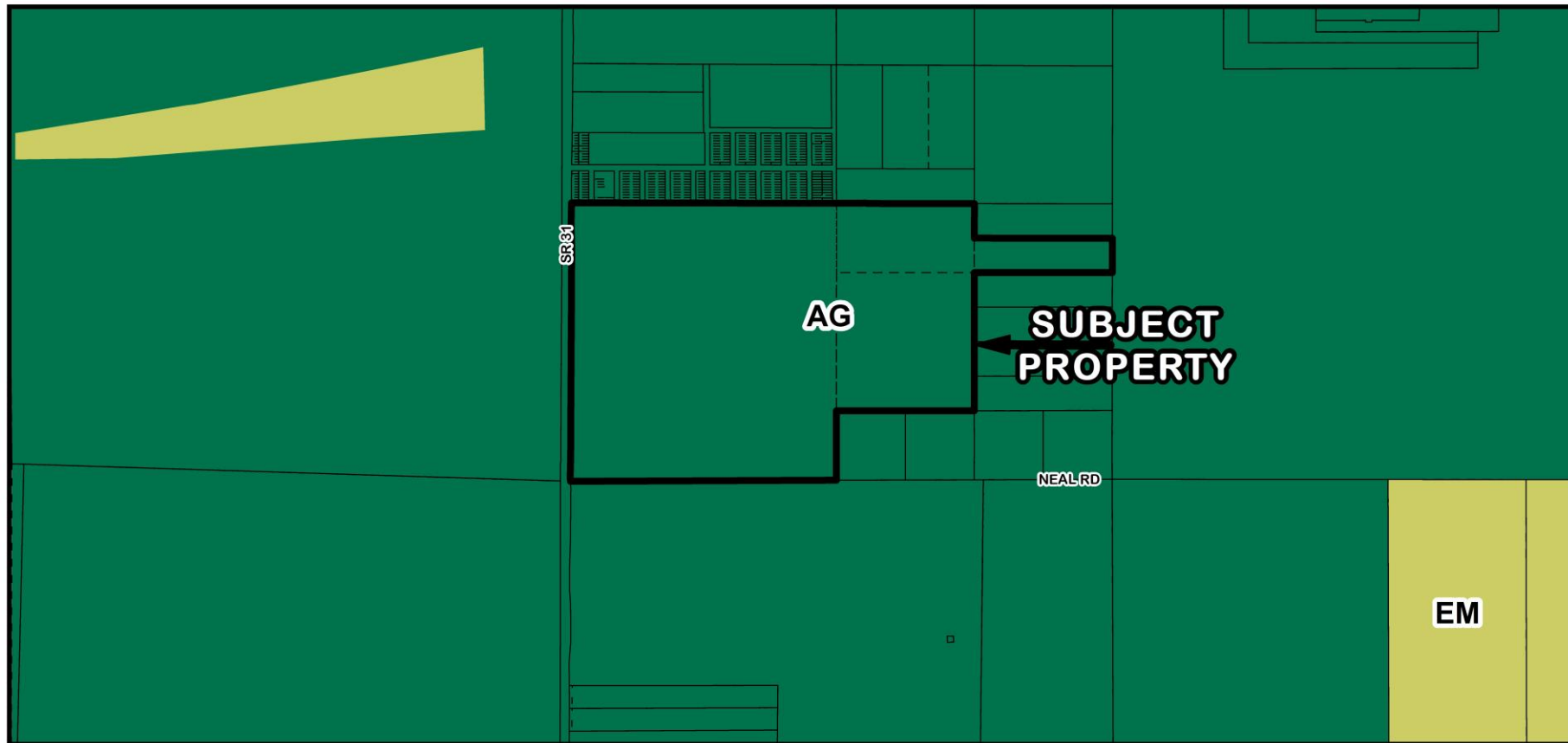


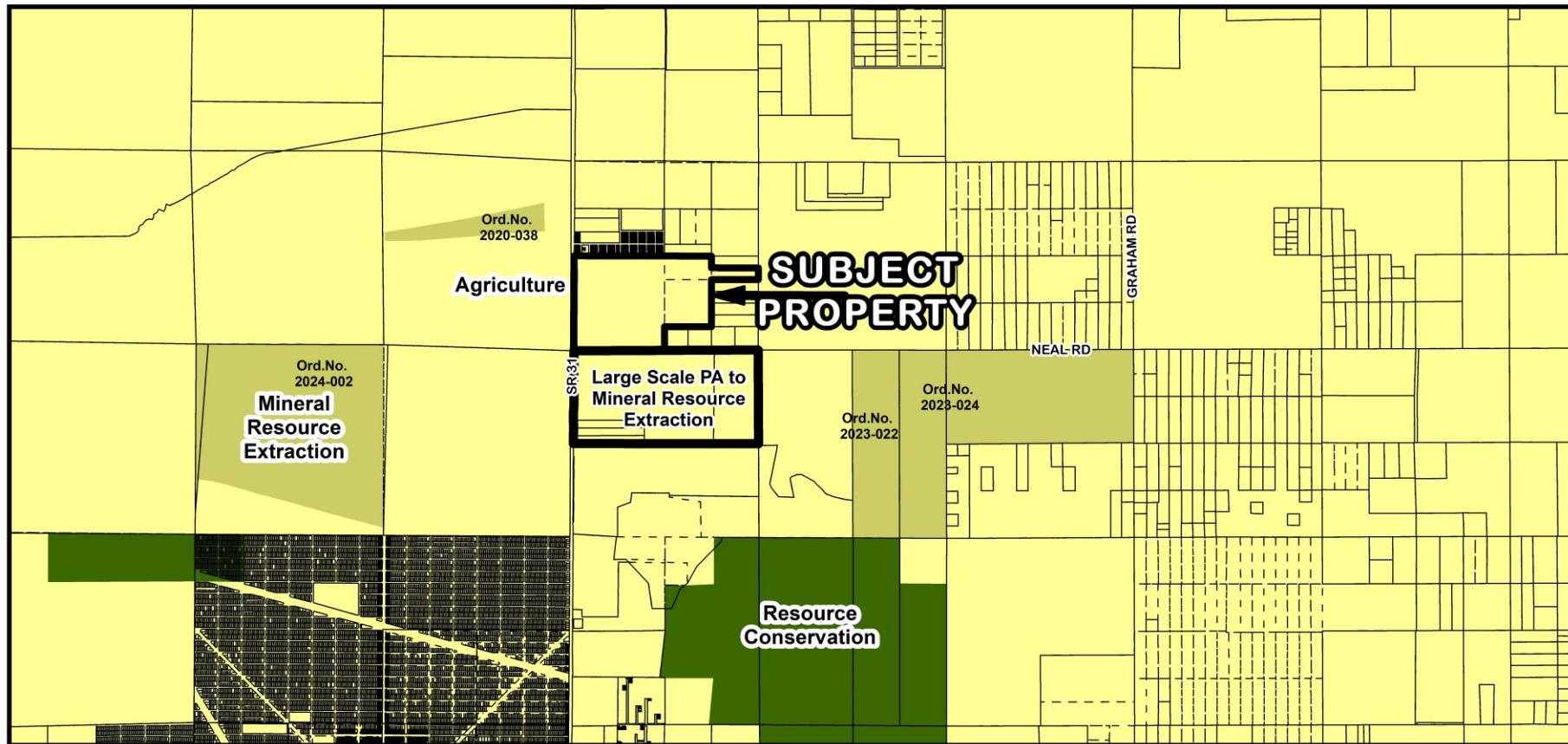
PAL-23-00005 and Z-23-41-19 Area Image

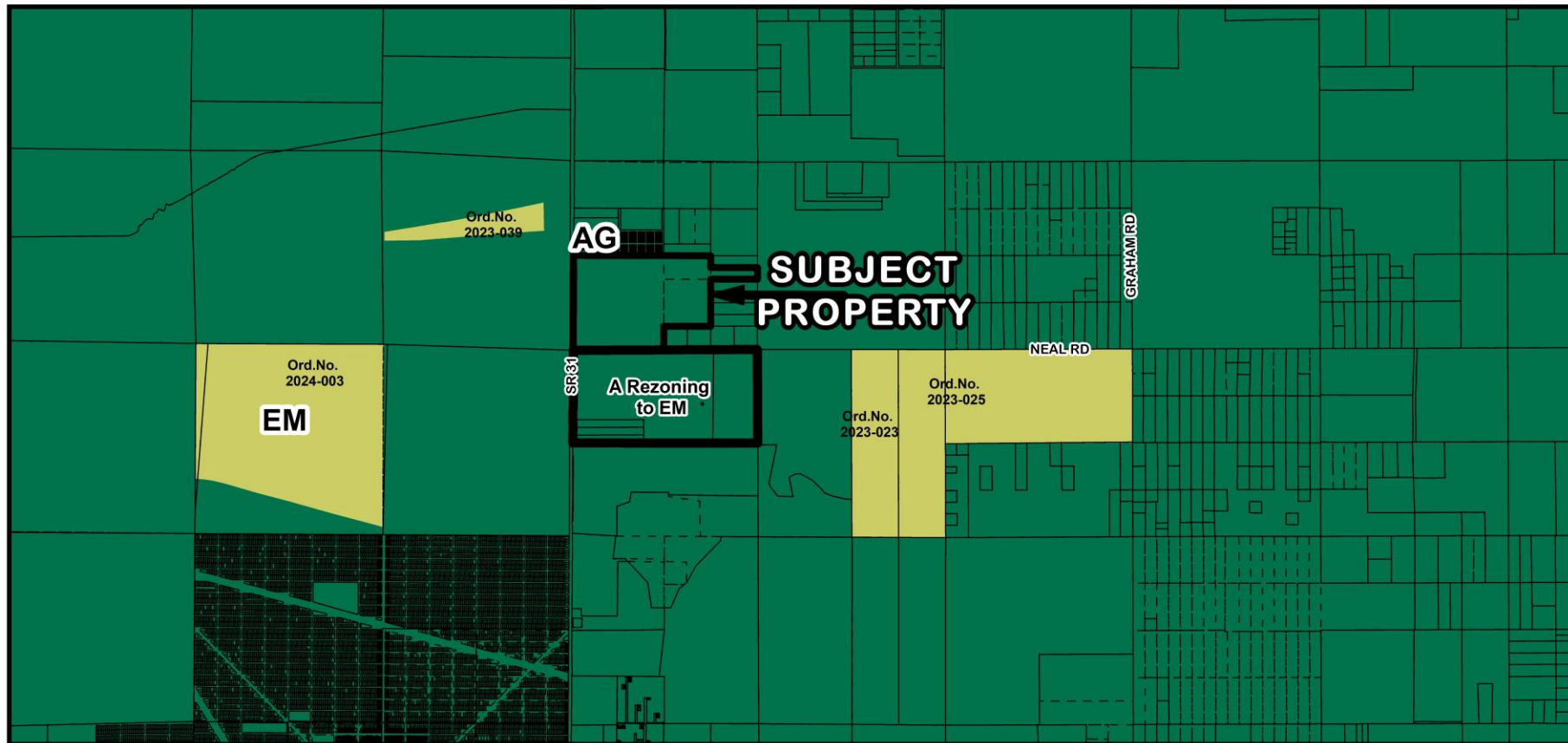


PAL-23-00005 and Z-23-41-19 Framework

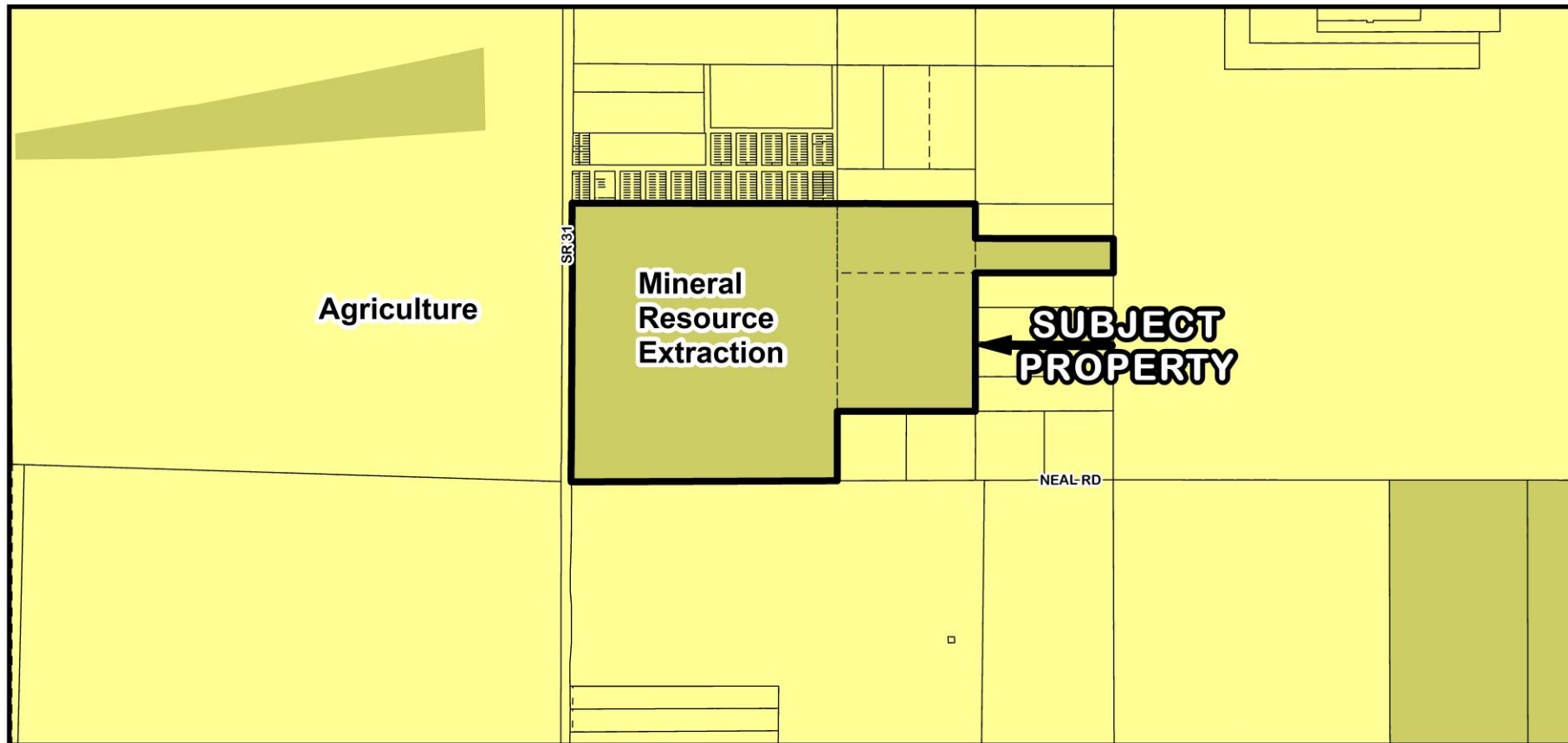


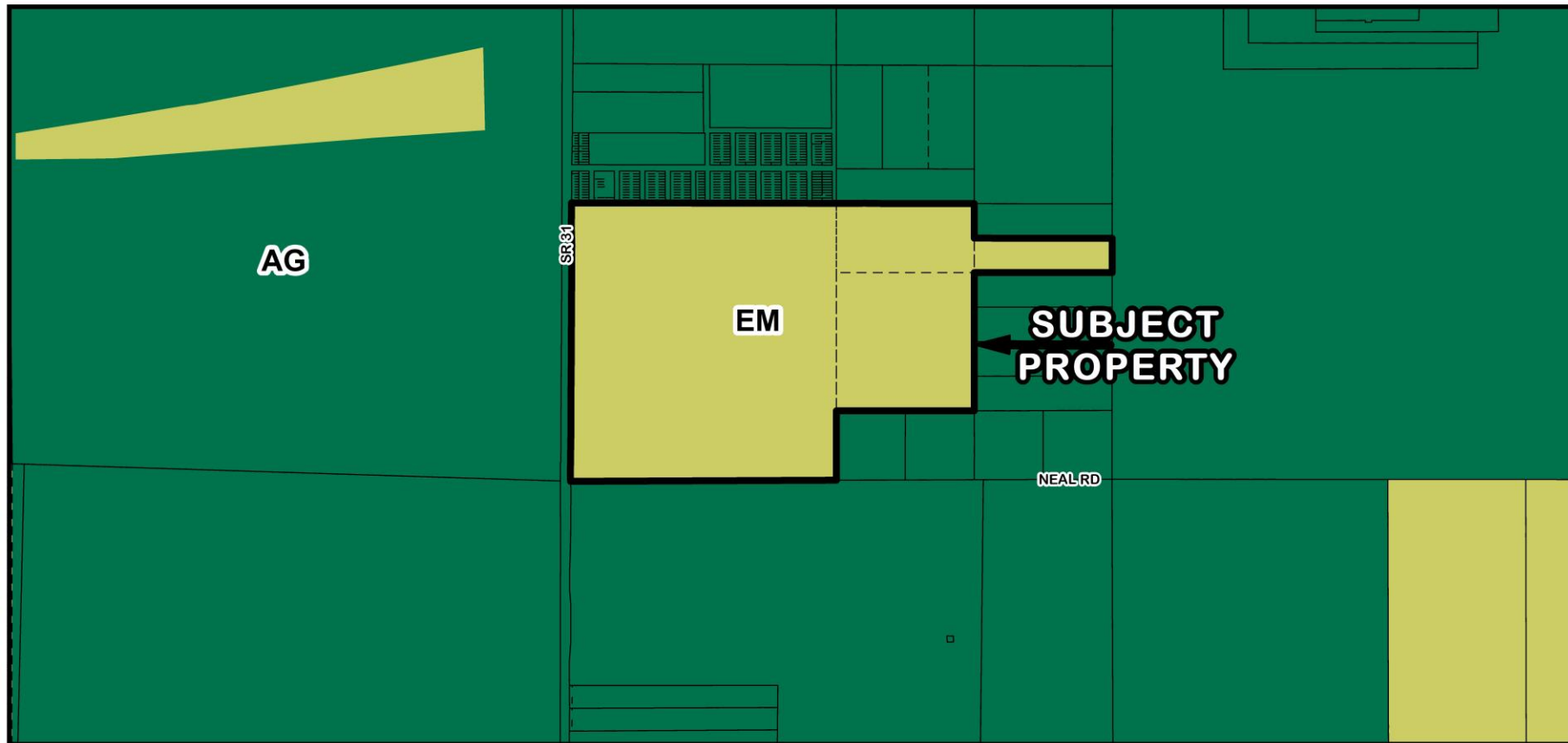






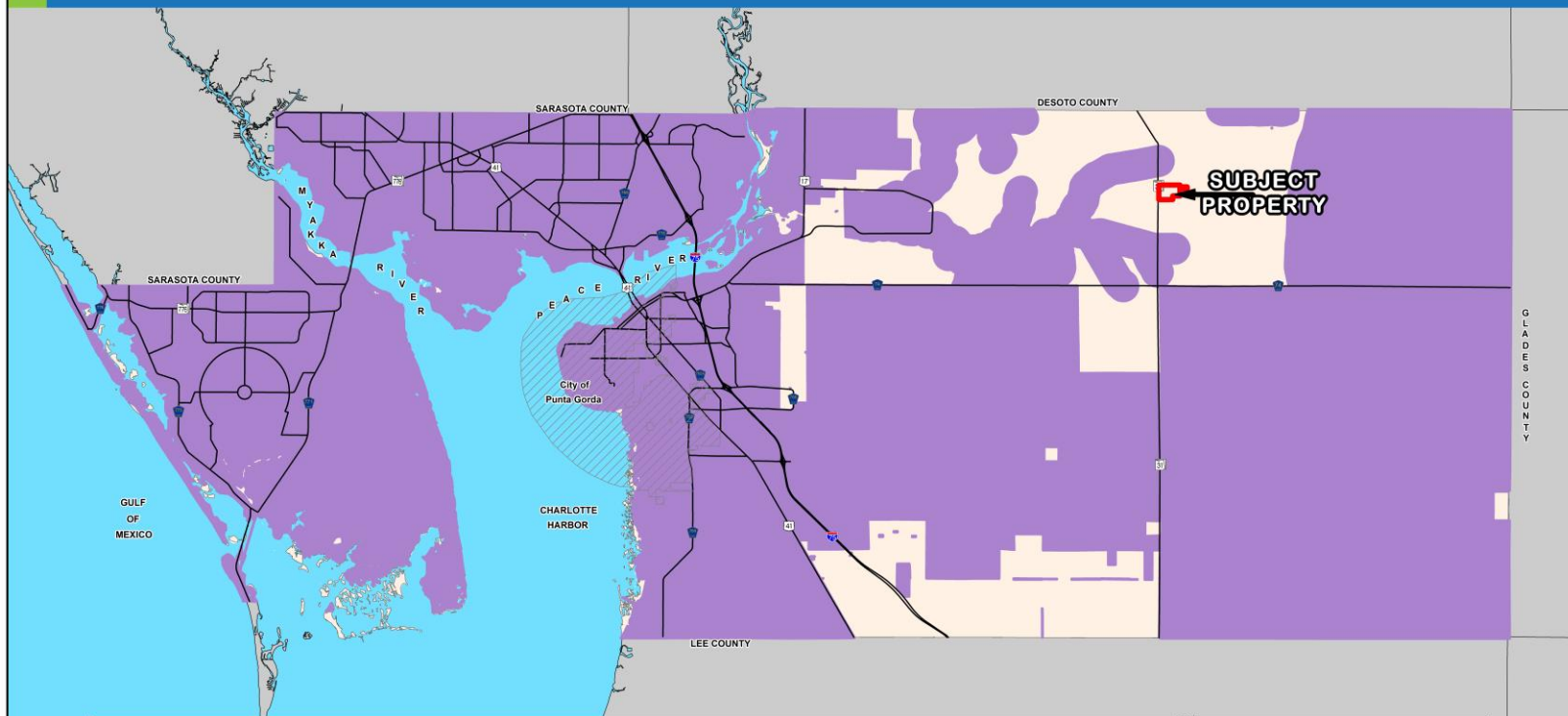
PAL-23-00005 and Z-23-41-19 Zoning Designations





CHARLOTTE COUNTY

Future Land Use Map Series
Map #24: MRE Prohibited Locations



Stateplane Projection
Datum: NAD83
Units: Feet
Source: CCGIS,
Community Development
Metadata available upon request



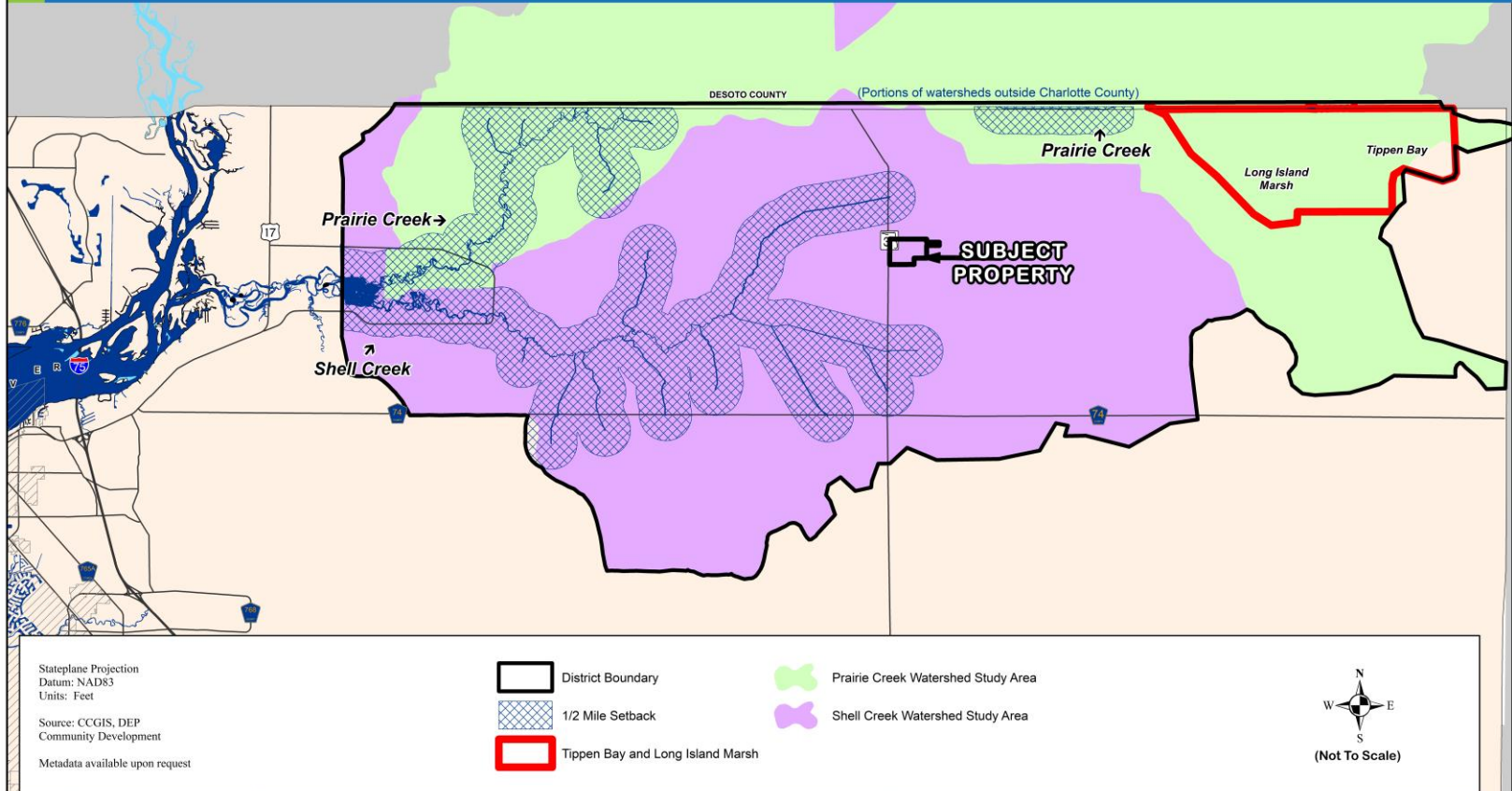
MRE Prohibited Areas



CHARLOTTE COUNTY

Future Land Use Map Series

Map #4: Watershed Overlay District



CHARLOTTE COUNTY

Future Land Use Map Series


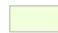
Map #6: Prime Aquifer Recharge Areas



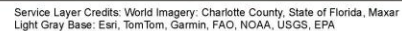
Stateplane Projection
Datum: NAD83
Units: Feet

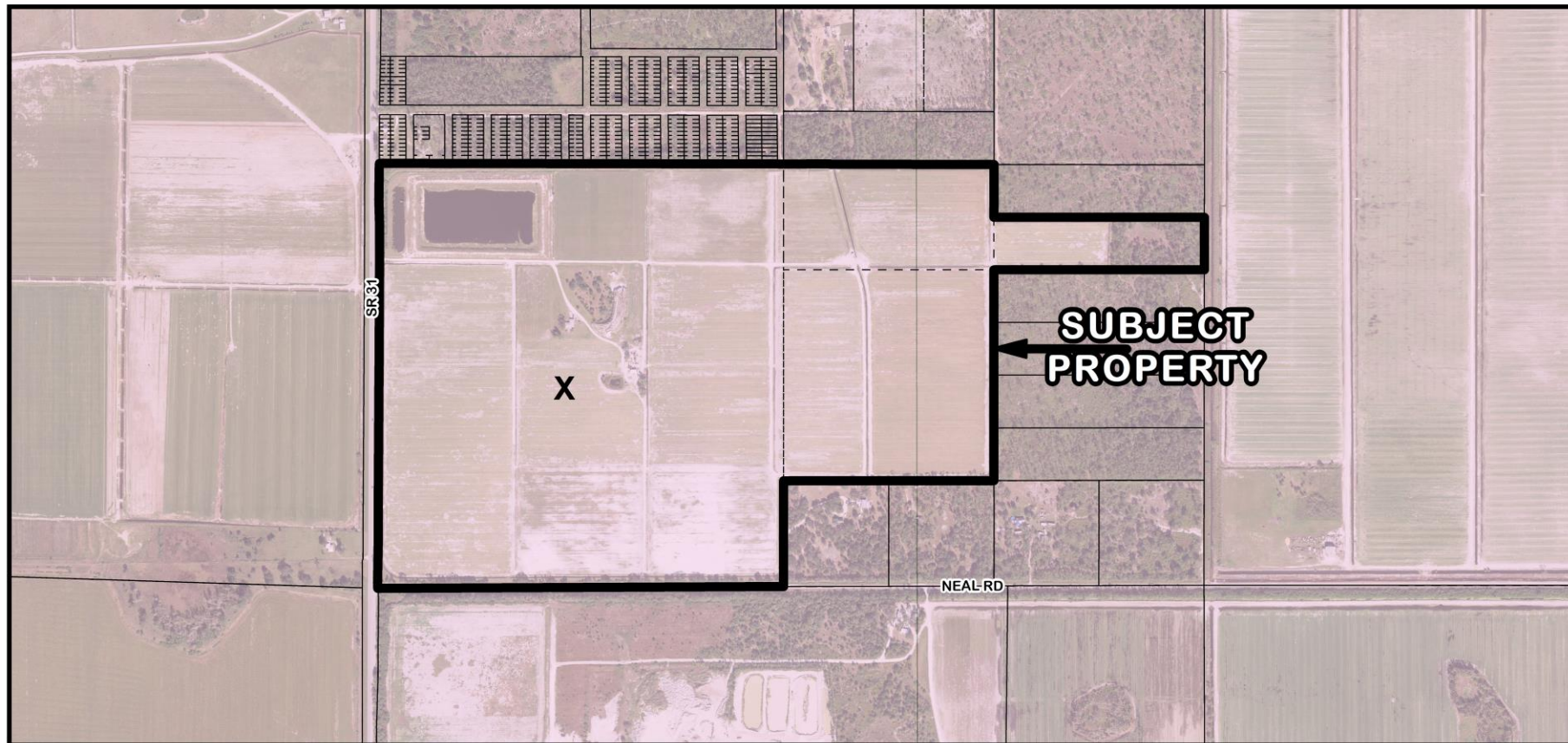
Source: CCGIS, SFWMD,
SFWMD, Community Development

Metadata available upon request

-  No recharge to very low recharge (0.0 to 1.0 inches per year) to the Upper Florida Aquifer
-  No discharge to very low discharge (0.0 to 1.0 inches per year) to the Upper Florida Aquifer









2650 STATE ROAD 31
PUNTA GORDA, FL 33982

DRAWING ISSUE

DATE _____

DESCRIPTION

MARK

DESIGNED BY: CRF
DRAWN BY: MW / JK
CHECKED BY: CRF
SUBMITTED BY: CRF
DATE: 04-19-2024
PROJECT # 1230028

SHEET TITLE

OVERALL SITE
PLAN

SHEET NUMBER

CS101

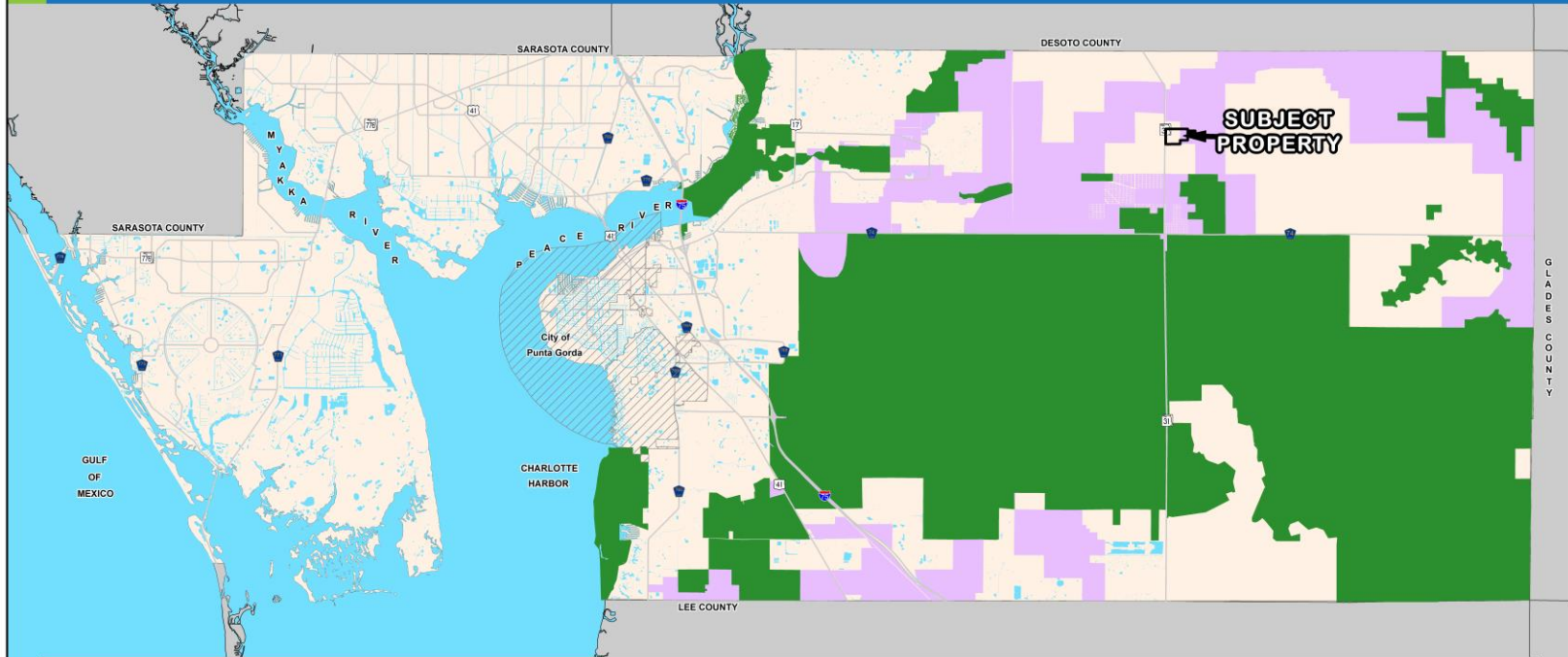
ORIGINAL SHEET SIZE:
22" X 34"



CHARLOTTE COUNTY

Future Land Use Map Series

Map #22: Critical Wildlife Corridors



Stateplane Projection
Datum: NAD83
Units: Feet

Source: CCGIS
Community Development

Metadata available upon request

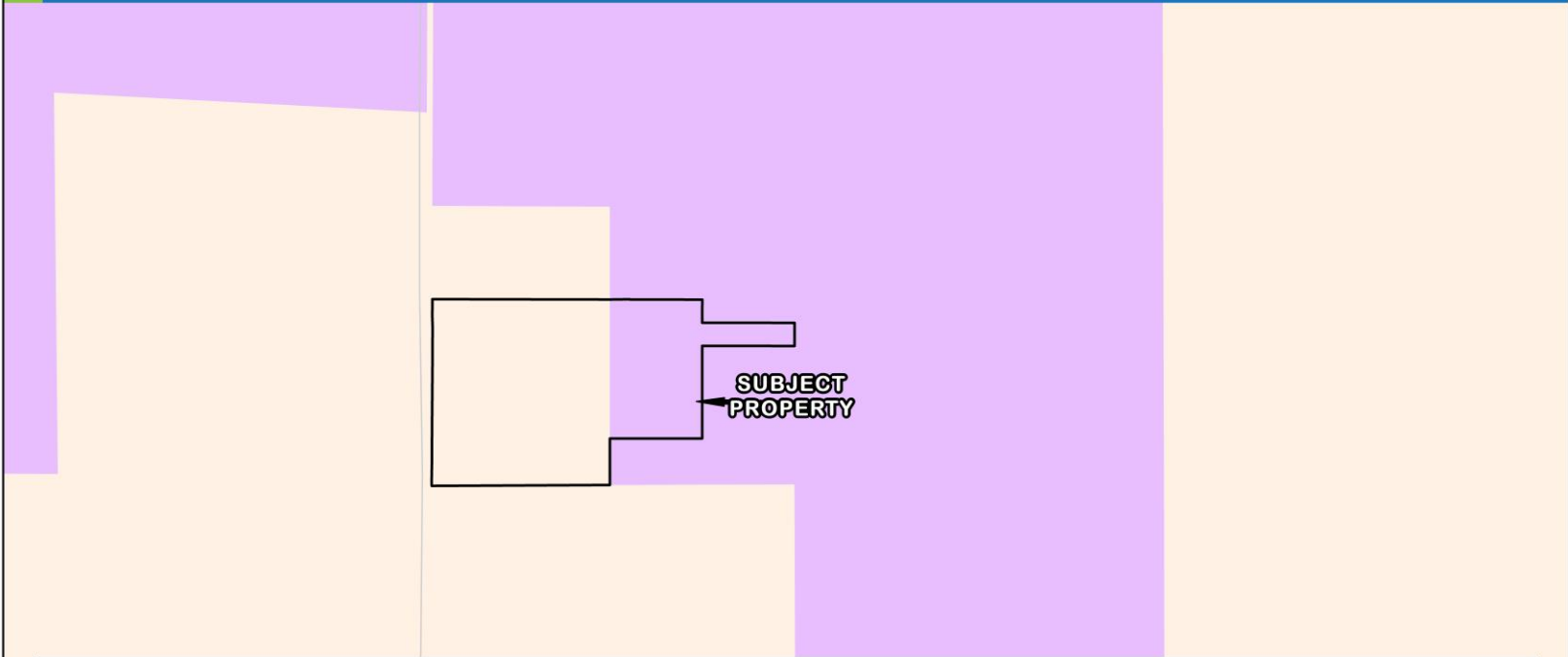
Wildlife Corridor Critical Linkages Resource Conservation & Preservation



CHARLOTTE COUNTY

Future Land Use Map Series

Map #22: Critical Wildlife Corridors



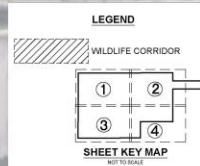
Stateplane Projection
Datum: NAD83
Units: Feet

Source: CCGIS
Community Development

Metadata available upon request

 Wildlife Corridor Critical Linkages  Resource Conservation & Preservation





POND
1000 RIVERPLACE BLVD. SUITE 600
JACKSONVILLE, FL 32207
PHONE (904) 543-0400
WWW.PONDGO.COM

Copyright © 2021 by Pond & Company. All rights reserved. No reprinting or distribution of this document is permitted without the expressed written approval of Pond & Company.

DPR SEAL



LAKE LONELY MINE

2650 STATE ROAD 31
PUNTA GORDA, FL 33982

DRAWING ISSUE

DATE 10/07/2024

[illegible]

1
AFK

DESIGNED BY: CRF
DRAWN BY: MW / JK
CHECKED BY: CRF
SUBMITTED BY: CRF
DATE: 10-07-2024
PROJECT #: 1230028

SHEET TITLE

CONSERVATION
EASEMENT
EXHIBIT

SHEET NUMBER

CW-100

ORIGINAL SHEET SIZE:
27" X 34"

NOT FOR CONSTRUCTION