A large, stylized graphic in the background featuring a yellow sun with rays and three green leaves of varying shades, all set against a white background.

CSZ-26-03 (Quasi-Judicial)

(Adoption Hearing BCC Land Use Meeting 05-26-2026)

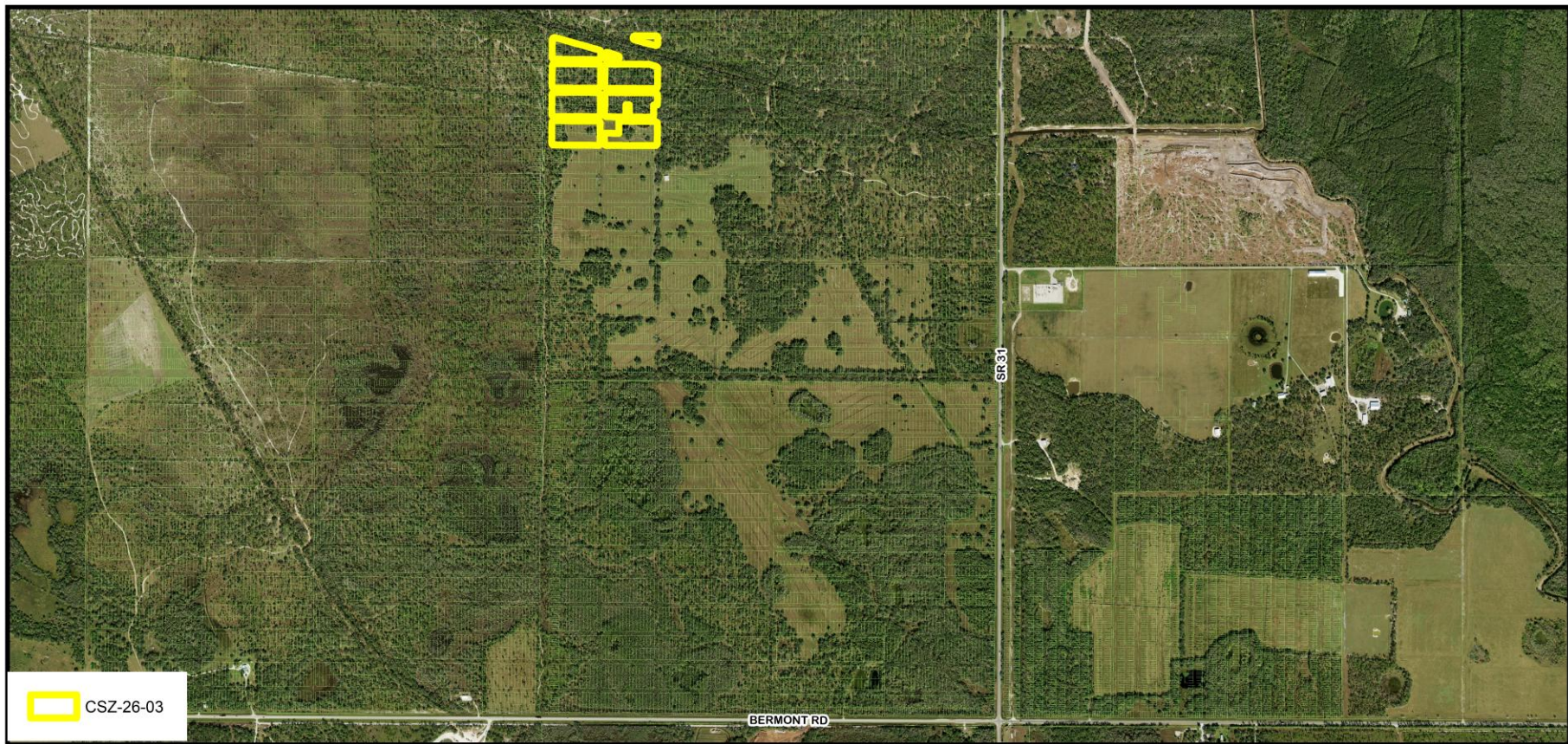
Sandra W. Welles Ranch LLC



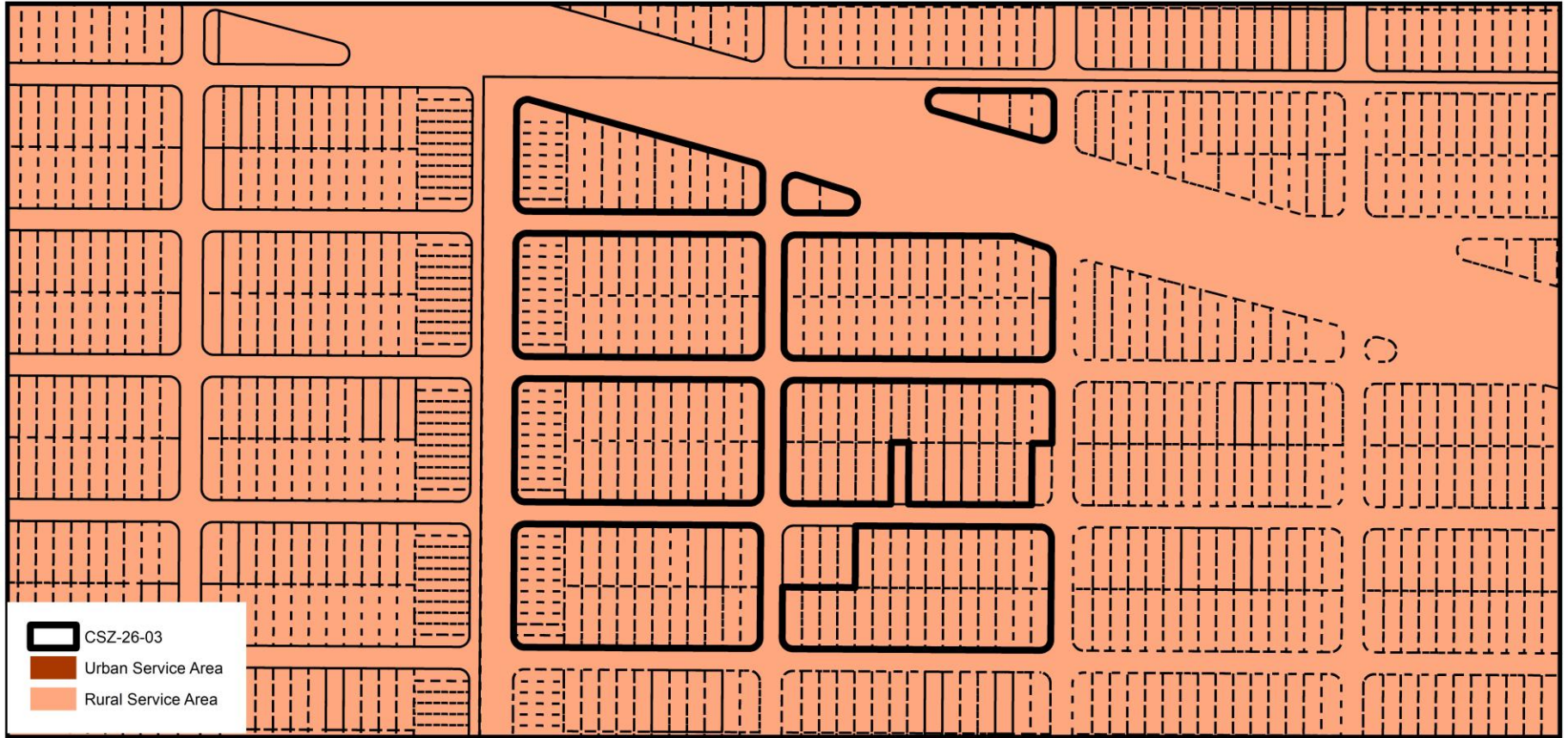
CHARLOTTE COUNTY
FLORIDA

Request

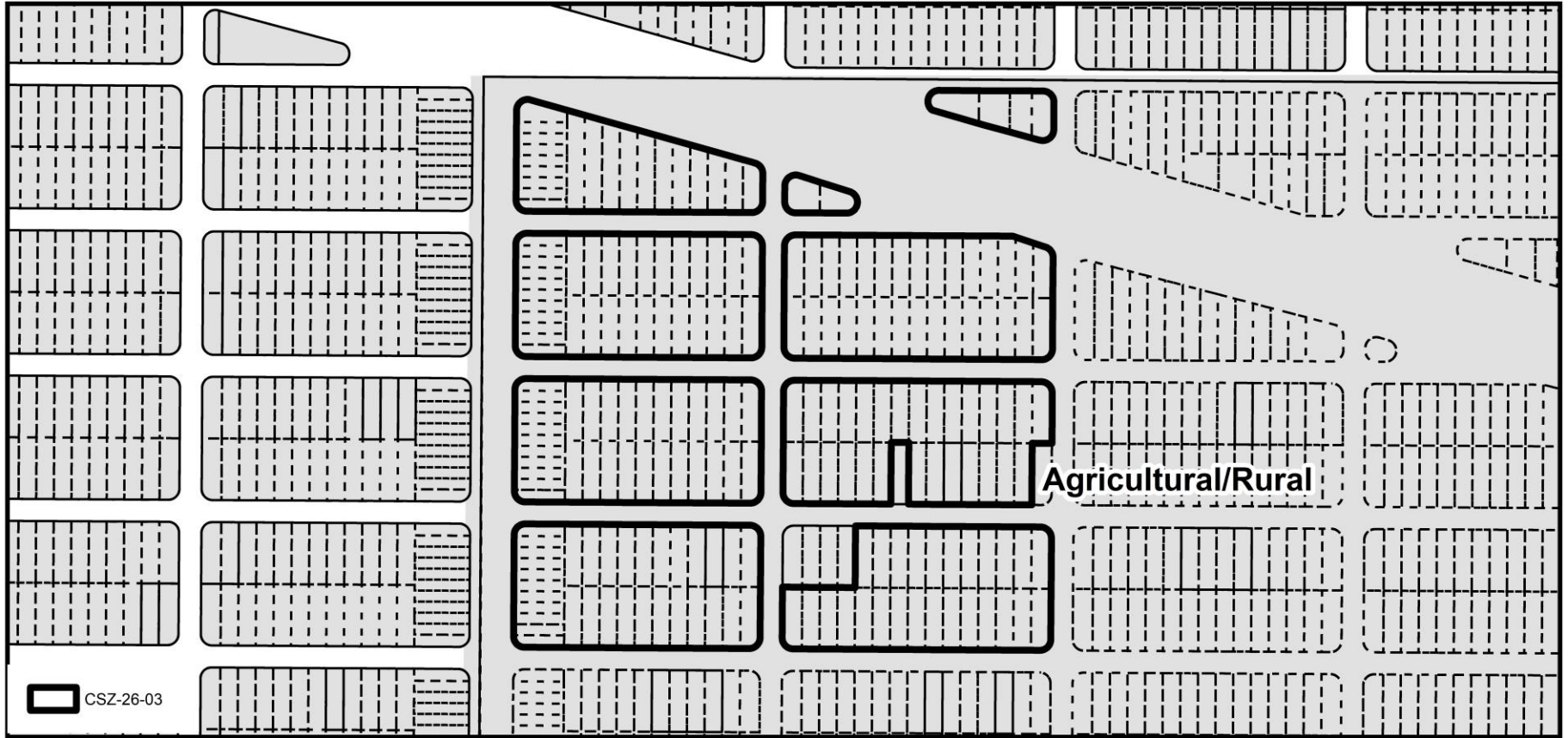
- To certificate Sending Zones, including 209 platted lots in Blocks 3, 4, 5, 9, 10, 11, 12, 32, & 33 and within the Del Verde Section F subdivision, generally located north of Bermont Road and west of SR 31, in the East County area, containing 24.79± acres; for calculation and severance of 209 density units
- The property is located in Commission District I.

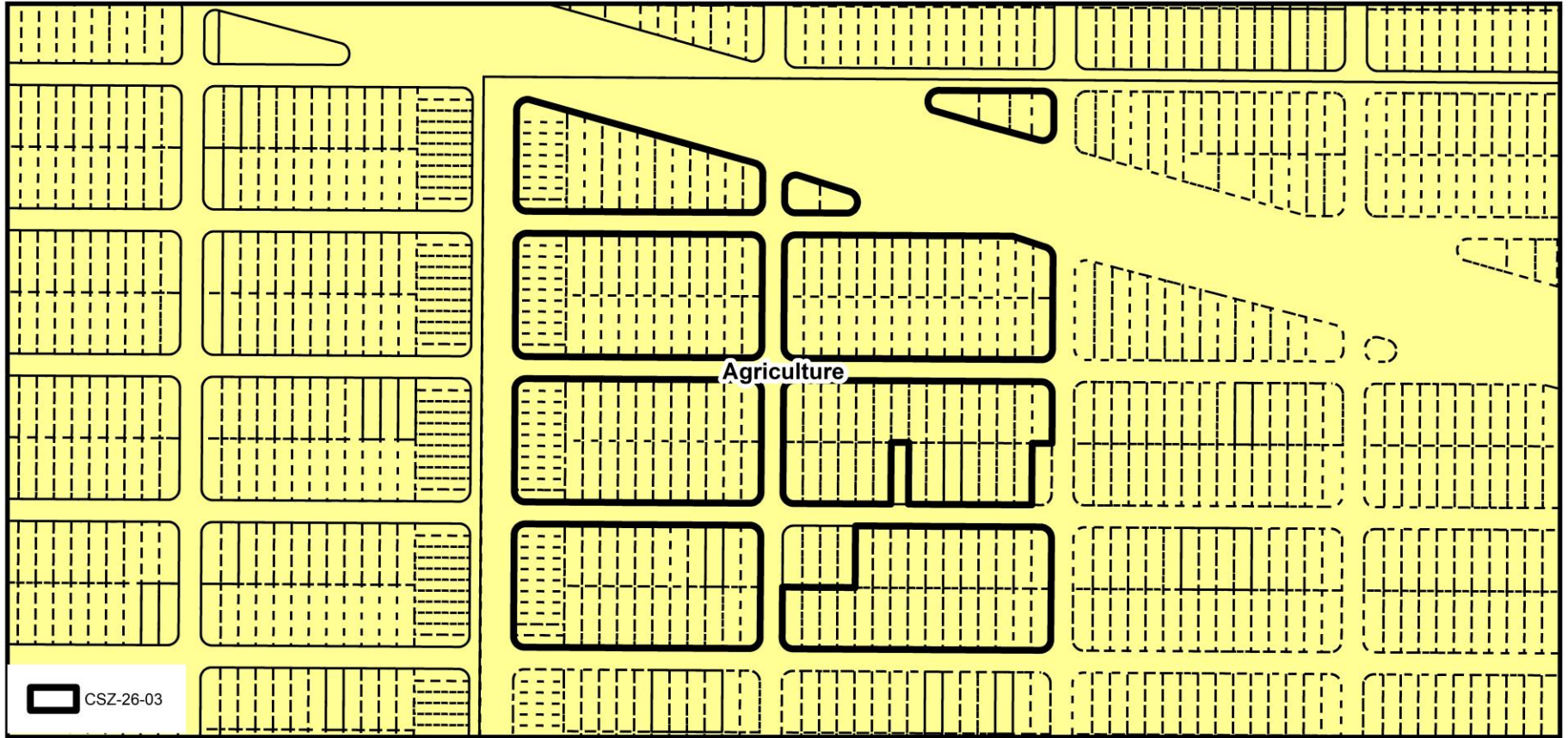


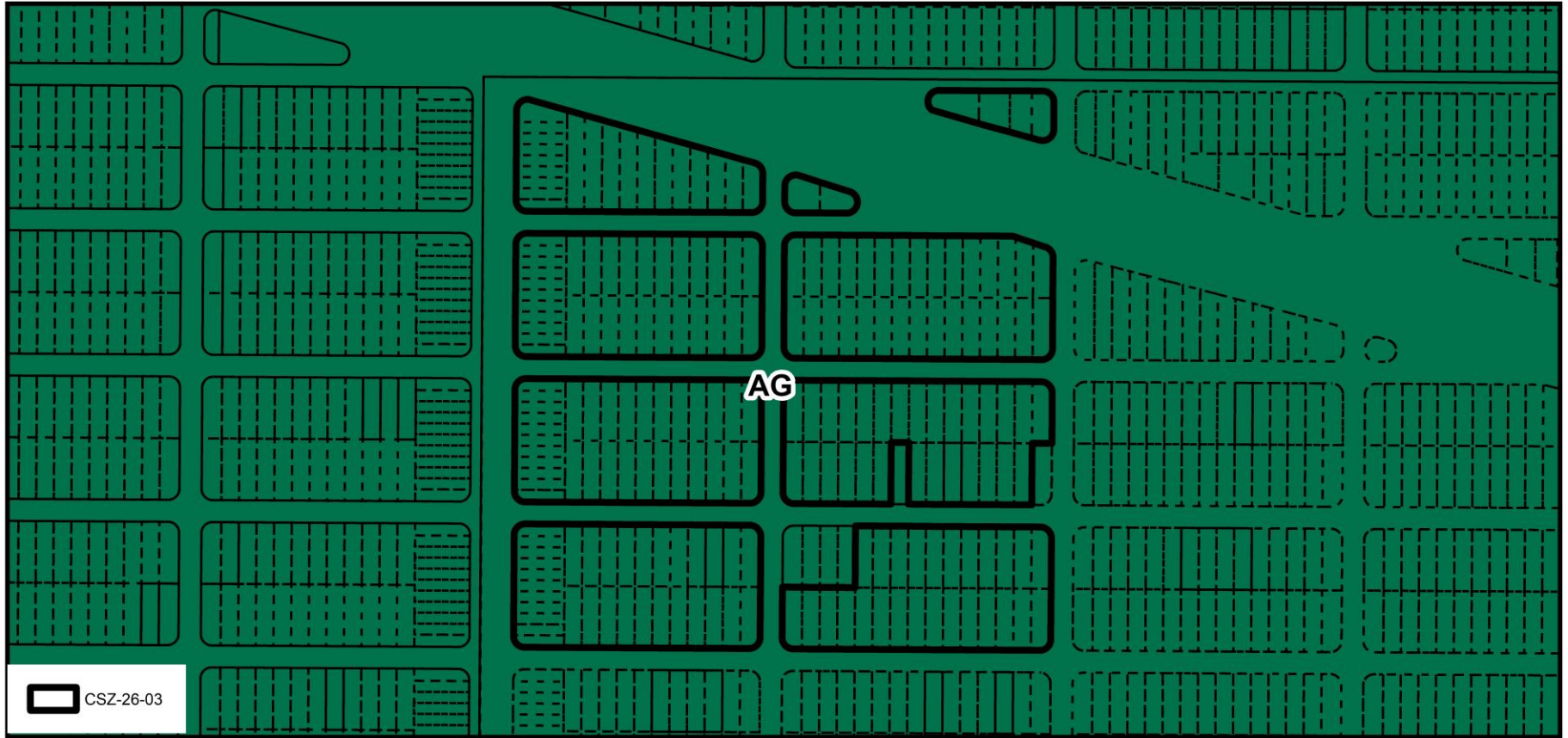




CSZ-26-03 Service Area Delineation







CSZ-26-03 Zoning Designations



CSZ-26-03 Coastal High Hazard Area

