

A large, stylized graphic in the background features a yellow sun with rays on the left and a green leaf on the right, both with white outlines. A light blue wave-like shape is positioned below the leaf.

# DRC-25-192

(BCC Land Use Meeting 4-28-2026)

Atwell LLC./Coral Lakes - Phase II



CHARLOTTE COUNTY  
FLORIDA

# DRC-25-192

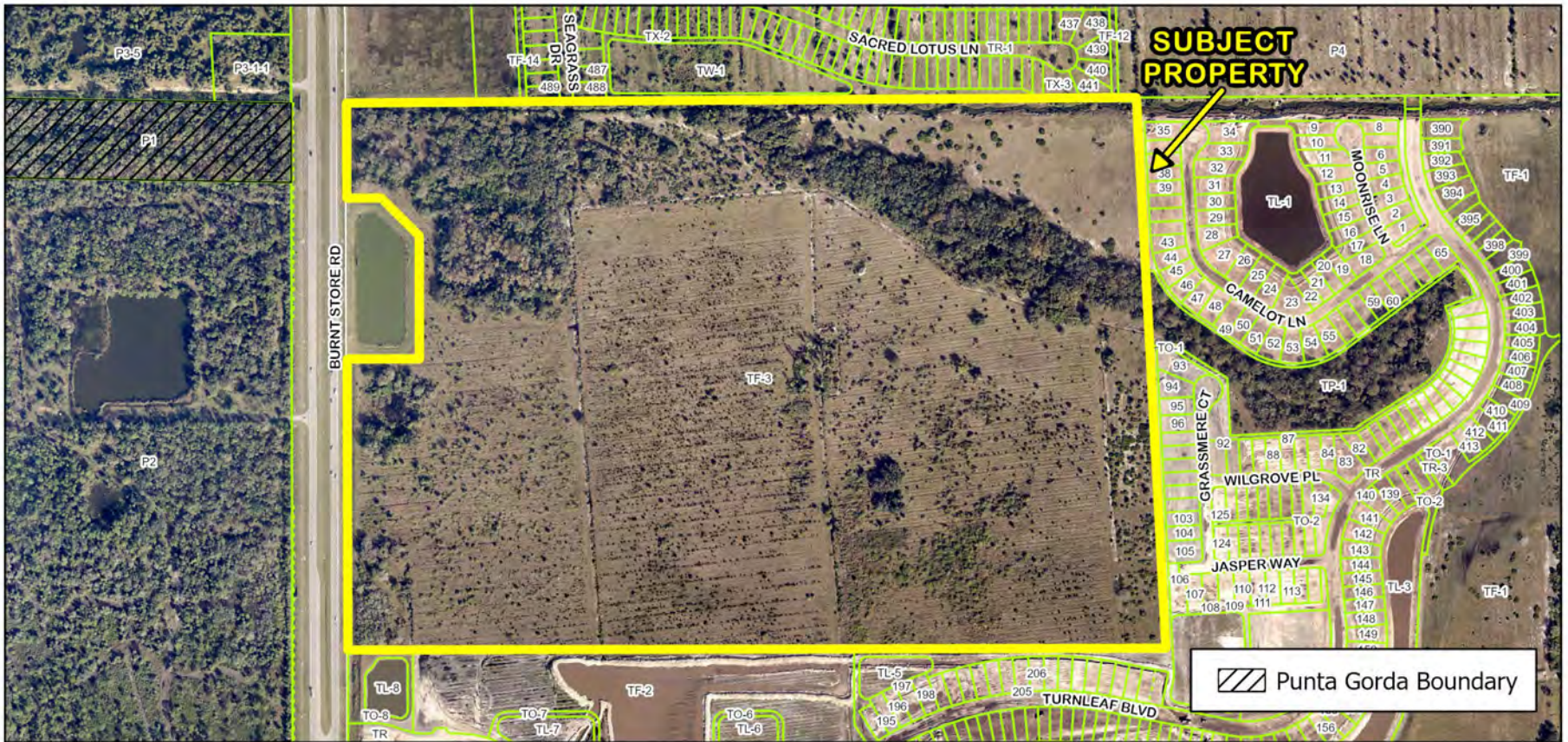
- Atwell LLC is requesting PD Final Detail Site Plan approval for Coral Lakes-Phase II. The project consists of 348 single-family units and associated infrastructure. The project site is 141.64± acres of an overall 306.51± acre site and is located at 13000 Burnt Store Rd, Punta Gorda, FL.
- Located in Commission District II



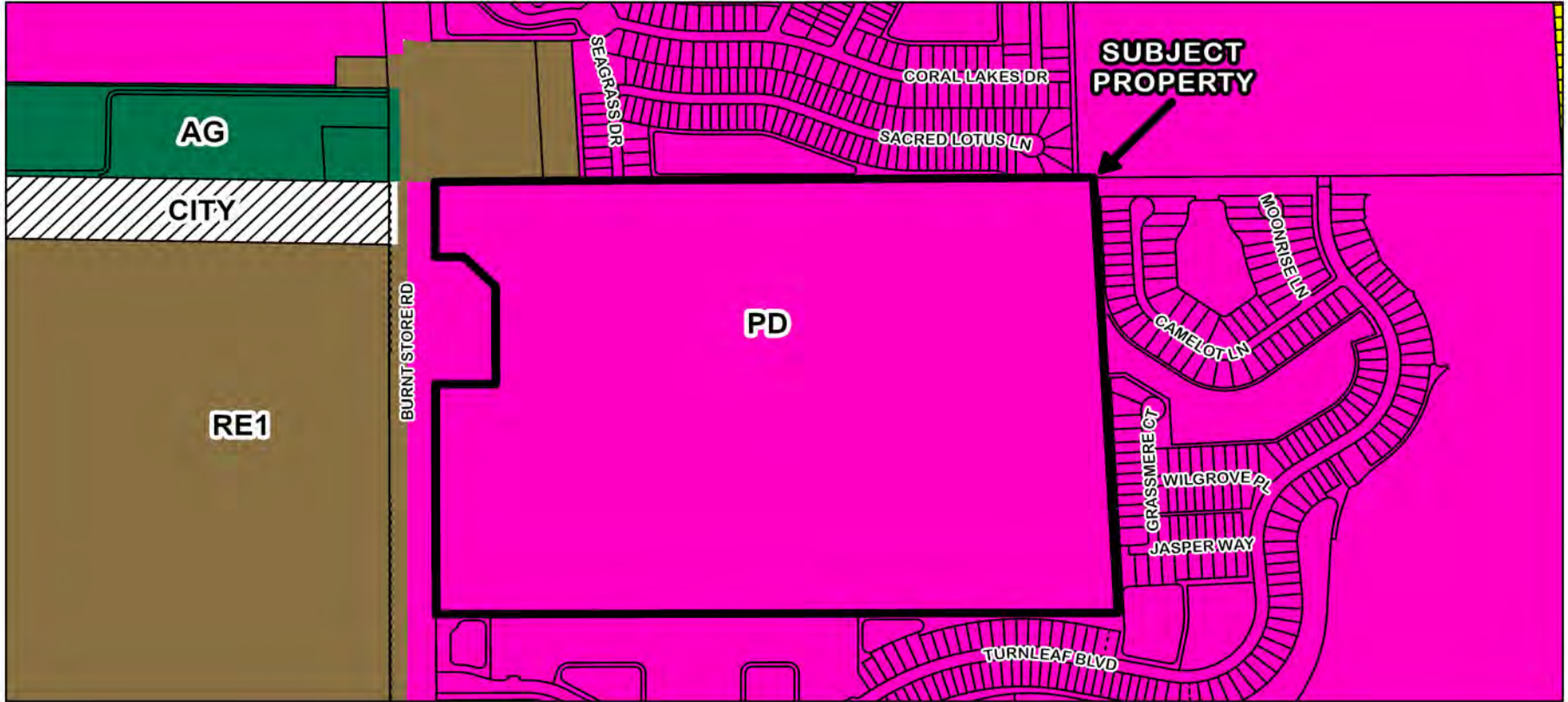
## DRC-25-192 Location Map



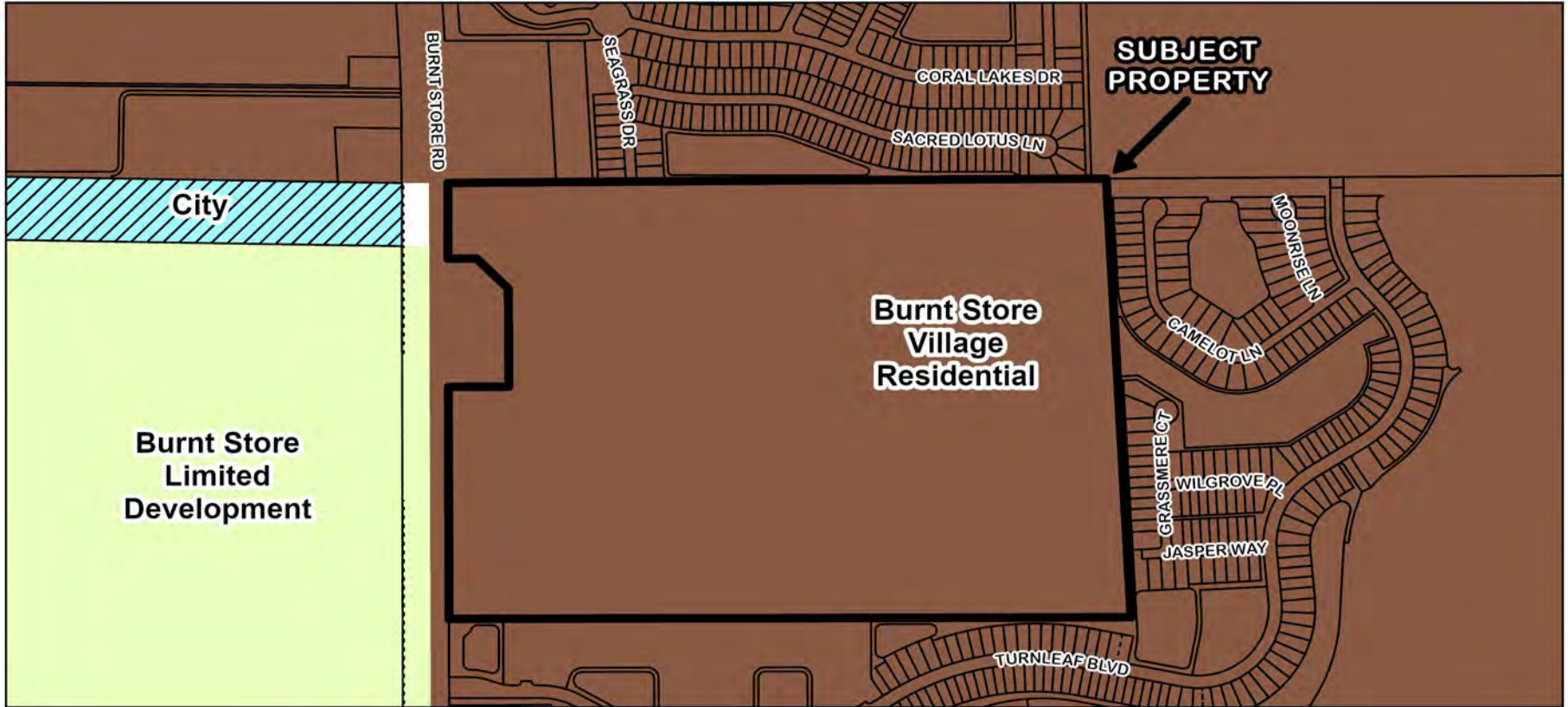
**DRC-25-192 2024 Eagle View Image**



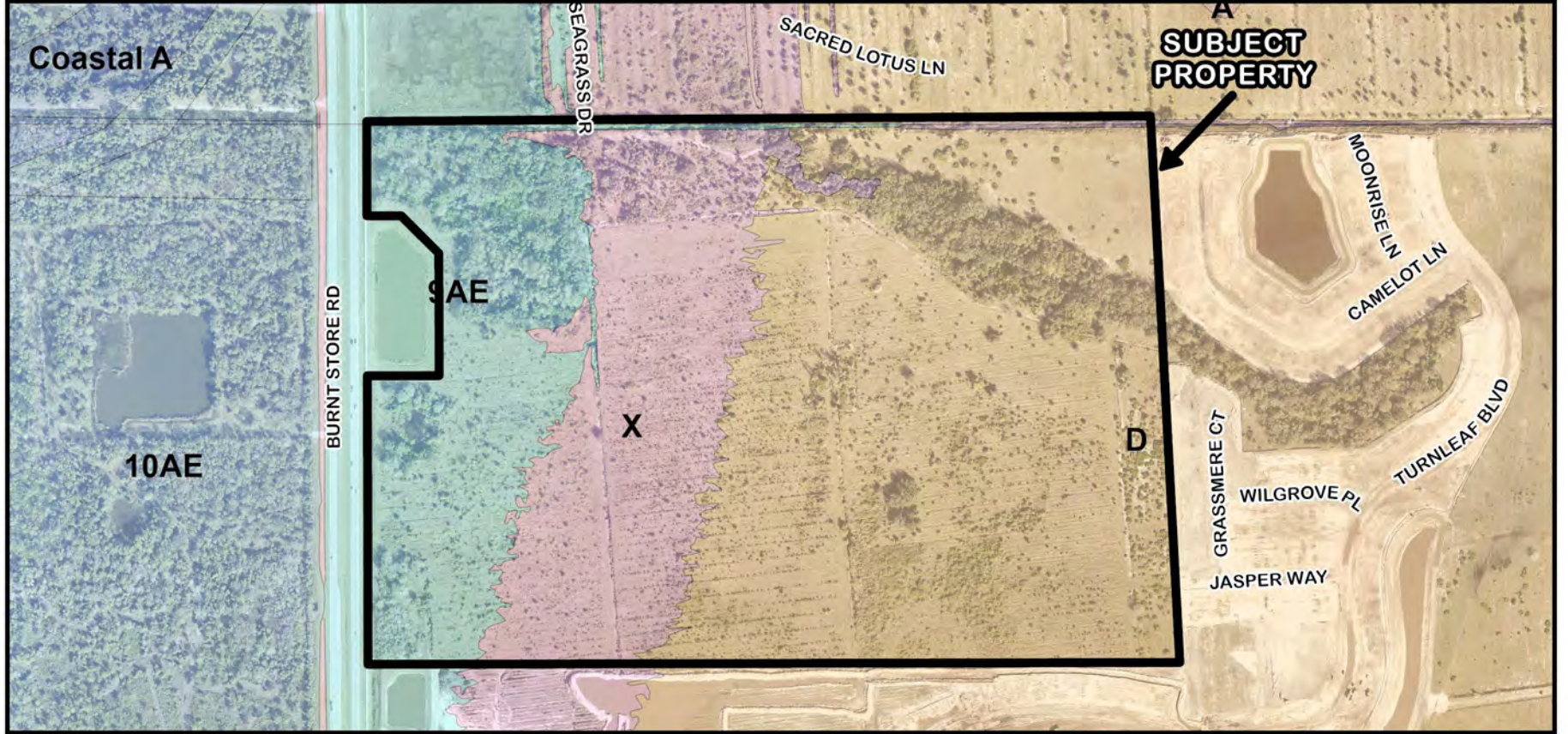
**DRC-25-192 Aerial Location Map**



## DRC-25-192 Zoning Designations



## DRC-25-192 FLUM Designations



**DRC-25-192 Flood Zones (Subject Property - 9AE, X and D Zones)**



CC BURNT STORE, LLC  
 111 S. ANDREWS AVENUE, SUITE 201  
 TAMPA, FL 33609  
 (813) 443-0826

NO.	DATE	DESCRIPTION

**BANKS**  
**ENGINEERING**  
 Professional Engineers, Planners, & Surveyors  
 3740 N. PARKER, P.E.  
 TAMPA, FL 33613

DATE	PROJECT	DRAWING	DESIGN	SCALE	CHECKED	TITLE	SHEET
8-16-24	40706	001	001	1/8" = 1'-0"	186	CORAL LAKES - PHASE II	5





PREPARED FOR:  
**CC BURNT STORE, LLC**  
 811 S. SANDHURST AVENUE, SUITE 201  
 TAMPA, FL 33607  
 (813) 443-0889

ALL ELEVATIONS IN THIS ENGINEERING PLAN UNLESS NOTED: FEET MSL	

**BANKS**  
**ENGINEERING**  
 Professional Engineers, Planners, & Land Surveyors  
 Serving the State of Florida

4875 SANDHURST ROAD, SUITE 100, WEST PALM BEACH, FLORIDA 33411-2000  
 (561) 835-1000 FAX (561) 835-1001  
 WWW.BANKSENG.COM

KEVIN W. POWERS, P.E.  
 (FL LIC. 90521)

MASTER UTILITY PLAN CORAL LAKES - PHASE II CHARLOTTE COUNTY, FLORIDA									
DATE	PROJECT	DRAWING	DESIGN	DRAWING	CHECKED	SCALE	SHEET		
4-18-24	AS/POC	001	001	001	001	1"=500'	11		





