

PAL-24-07 (Legislative)

Z-24-18 (Quasi-Judicial)

(Transmittal Hearing BCC Land Use Meeting 06-10-2025 for
PAL-24-07 Only

Adoption Hearing BCC Land Use Meeting 07-22-2025
for PAL-24-07 and Z-24-18)

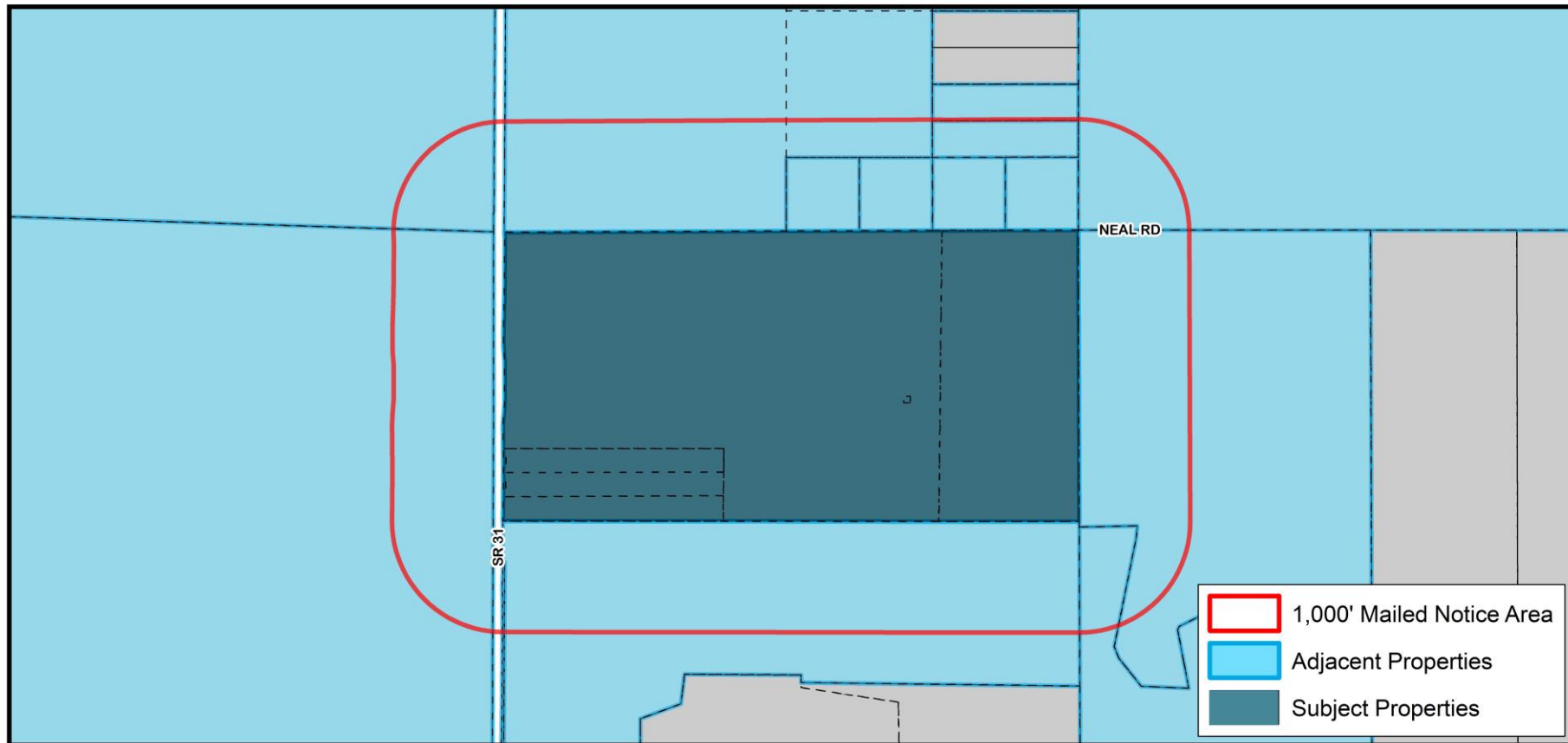
Bluegrass Land & Mine

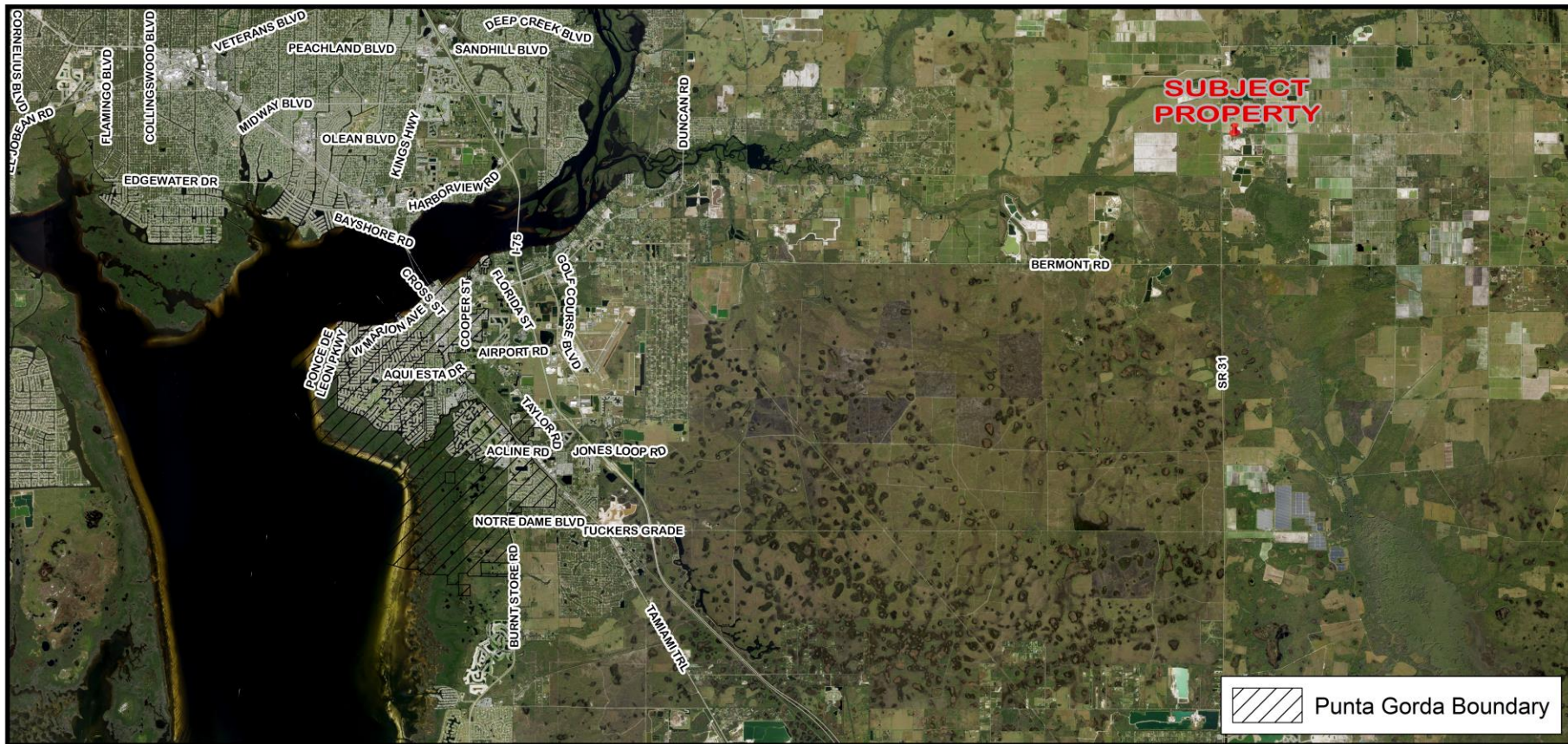


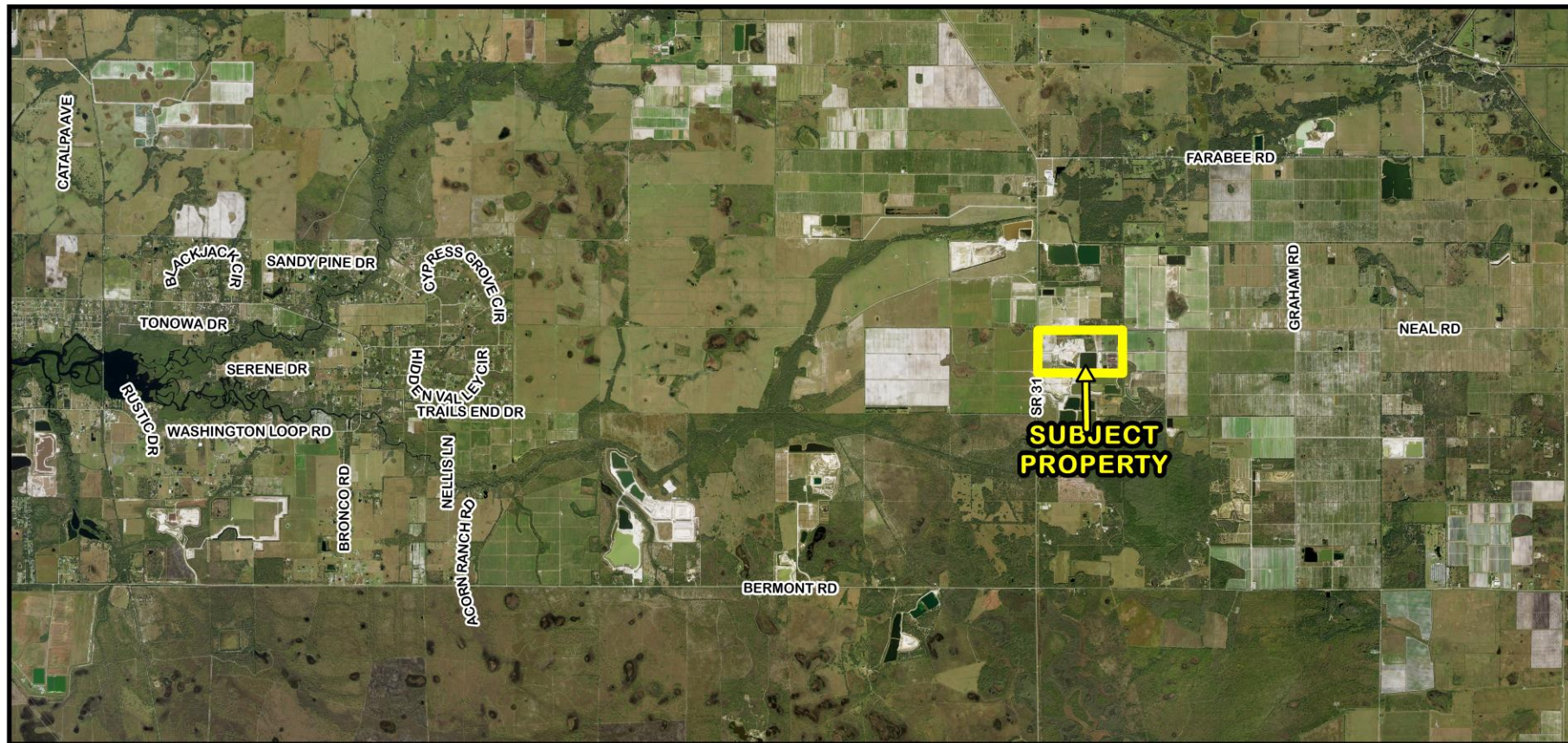
CHARLOTTE COUNTY
FLORIDA

Proposed Changes

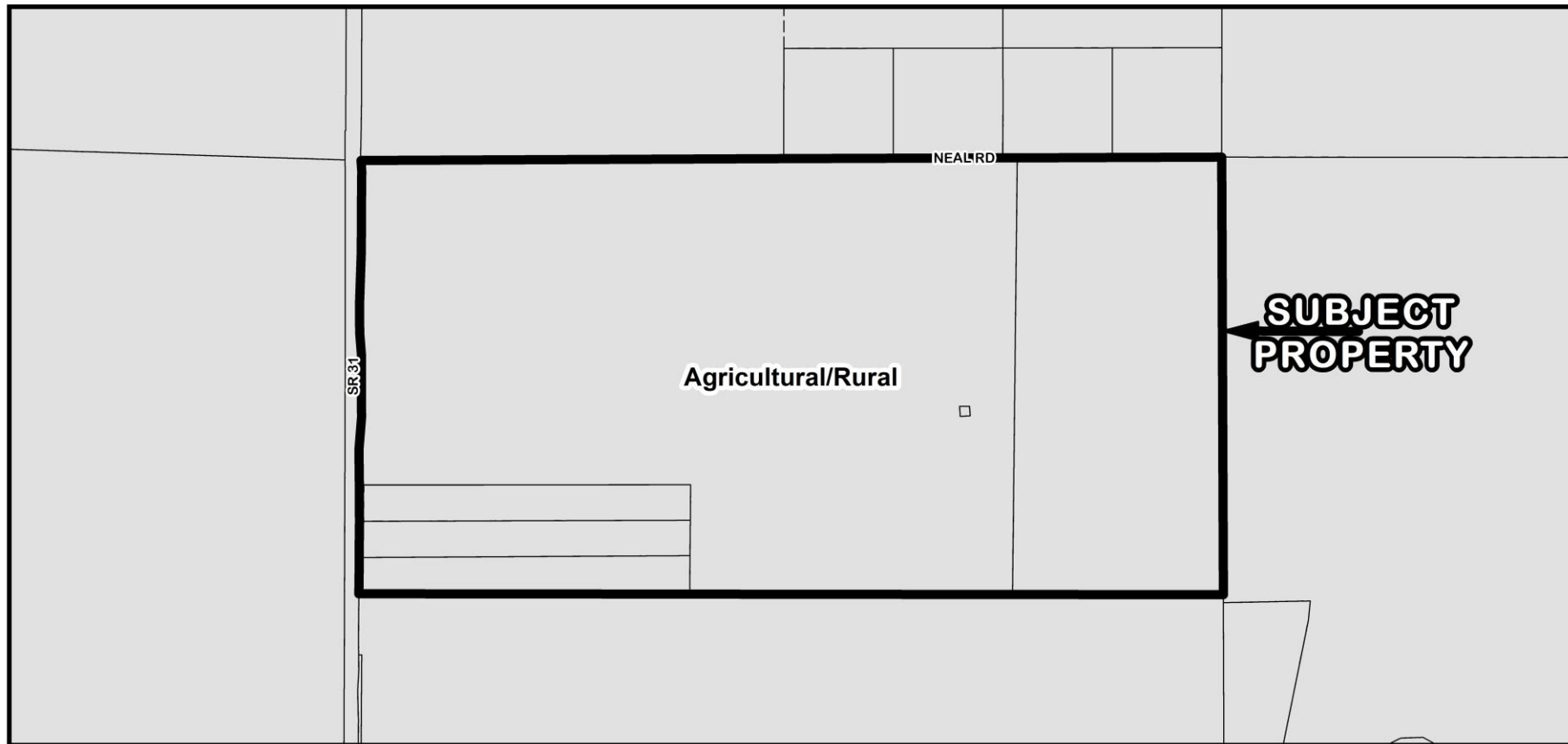
- A Large Scale Plan Amendment (PAL-24-08) from Agriculture (AG) to Mineral Resource Extraction (MRE).
- A rezoning (Application Number Z-24-18) from Agriculture (AG) to Excavation and Mining (EM).
- Property located in Commission District I.

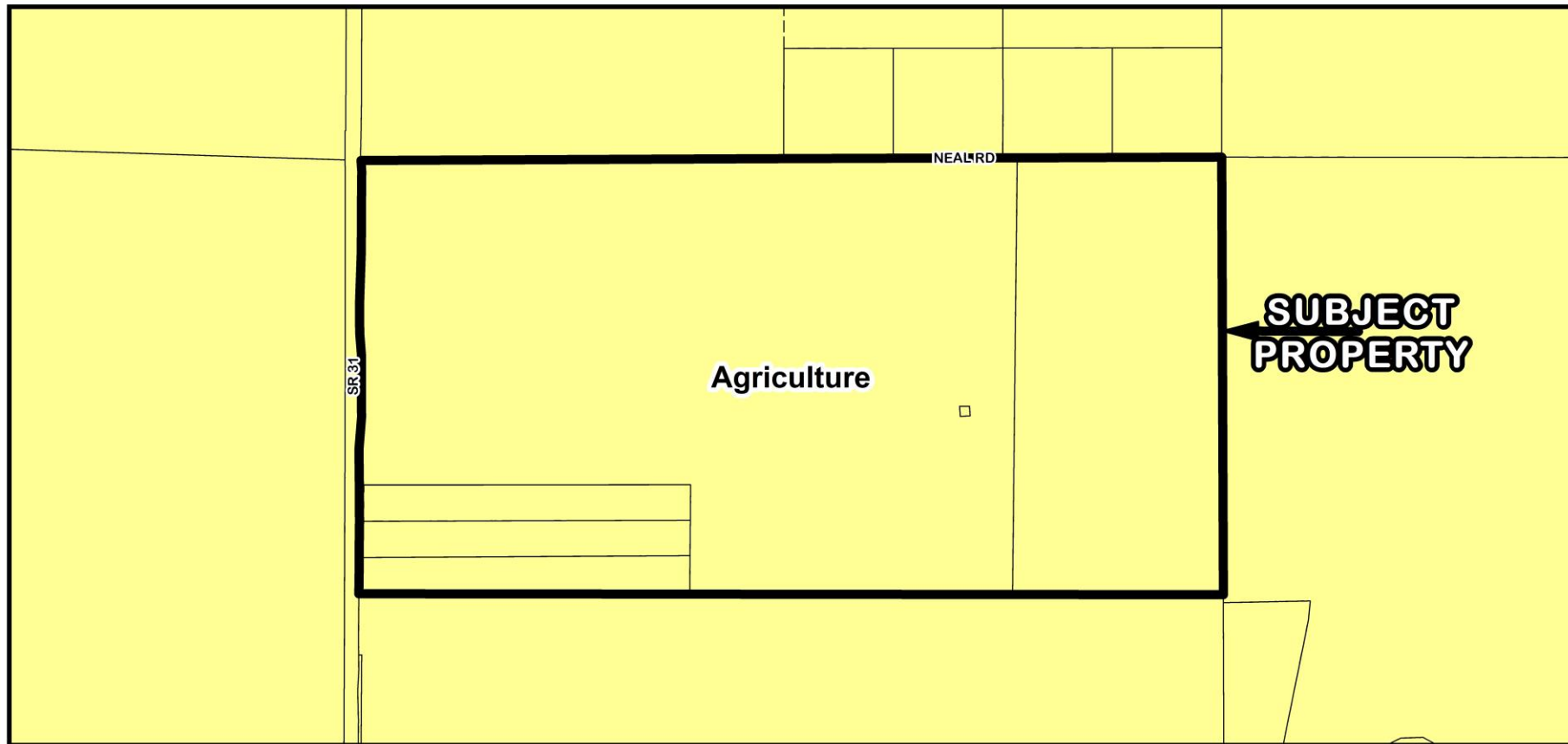


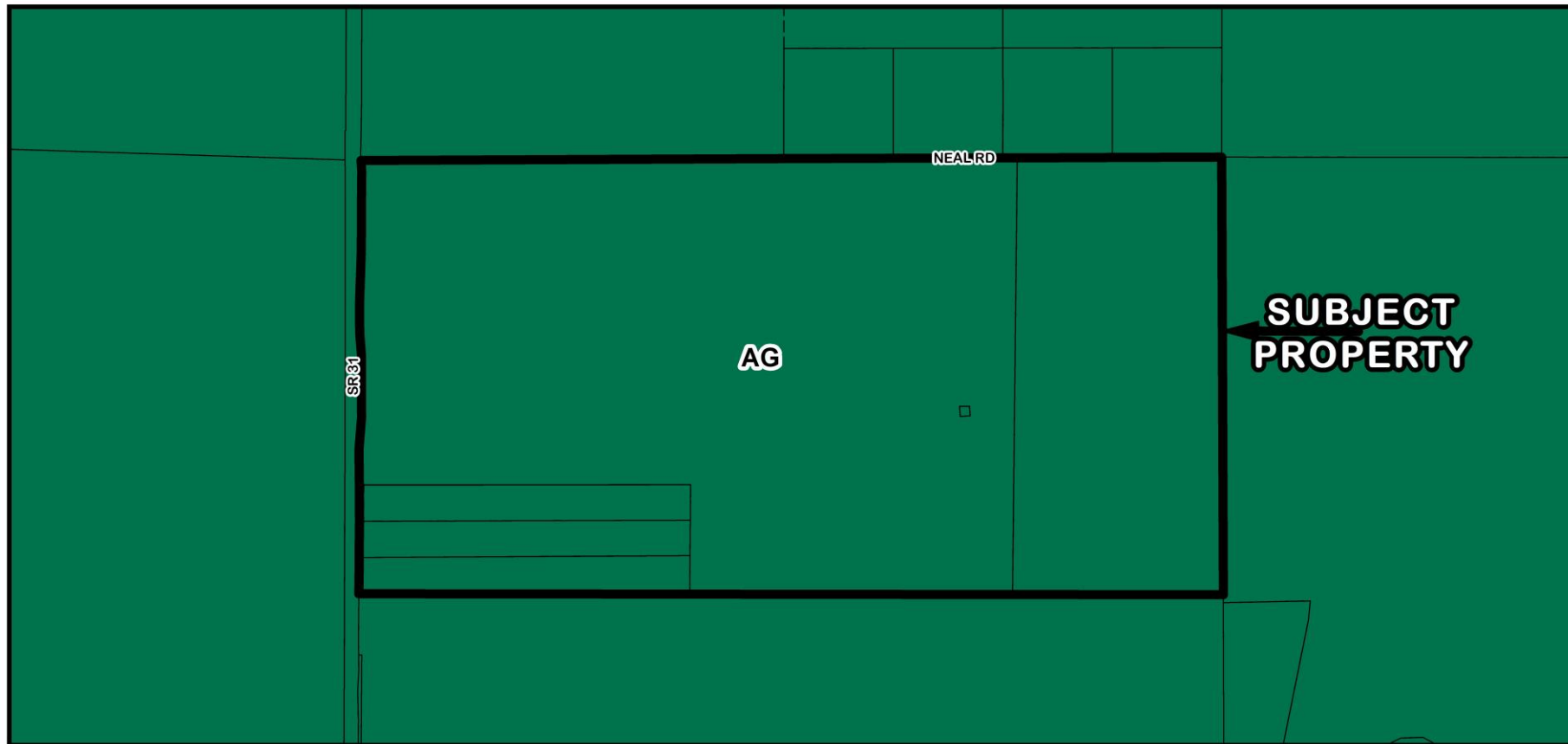


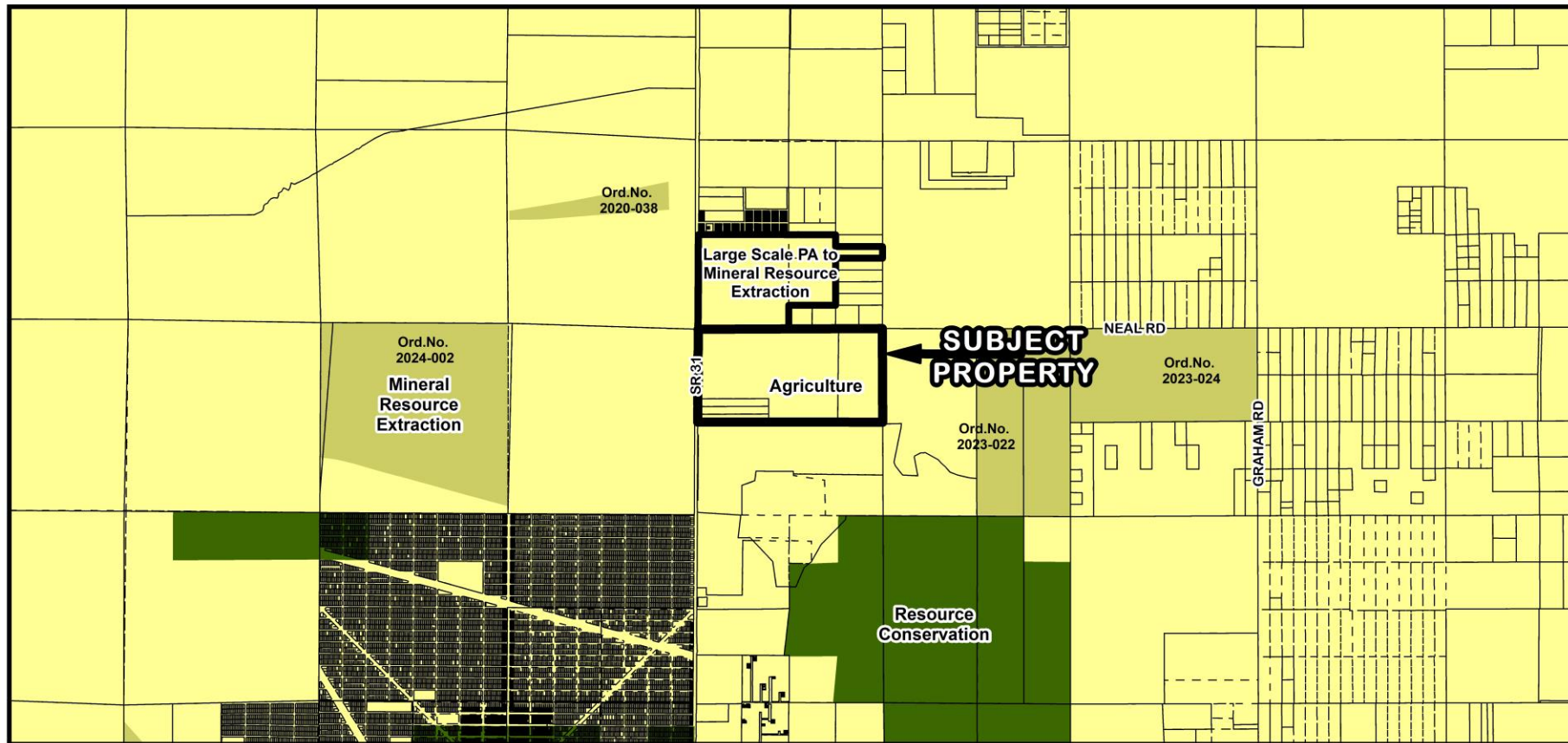




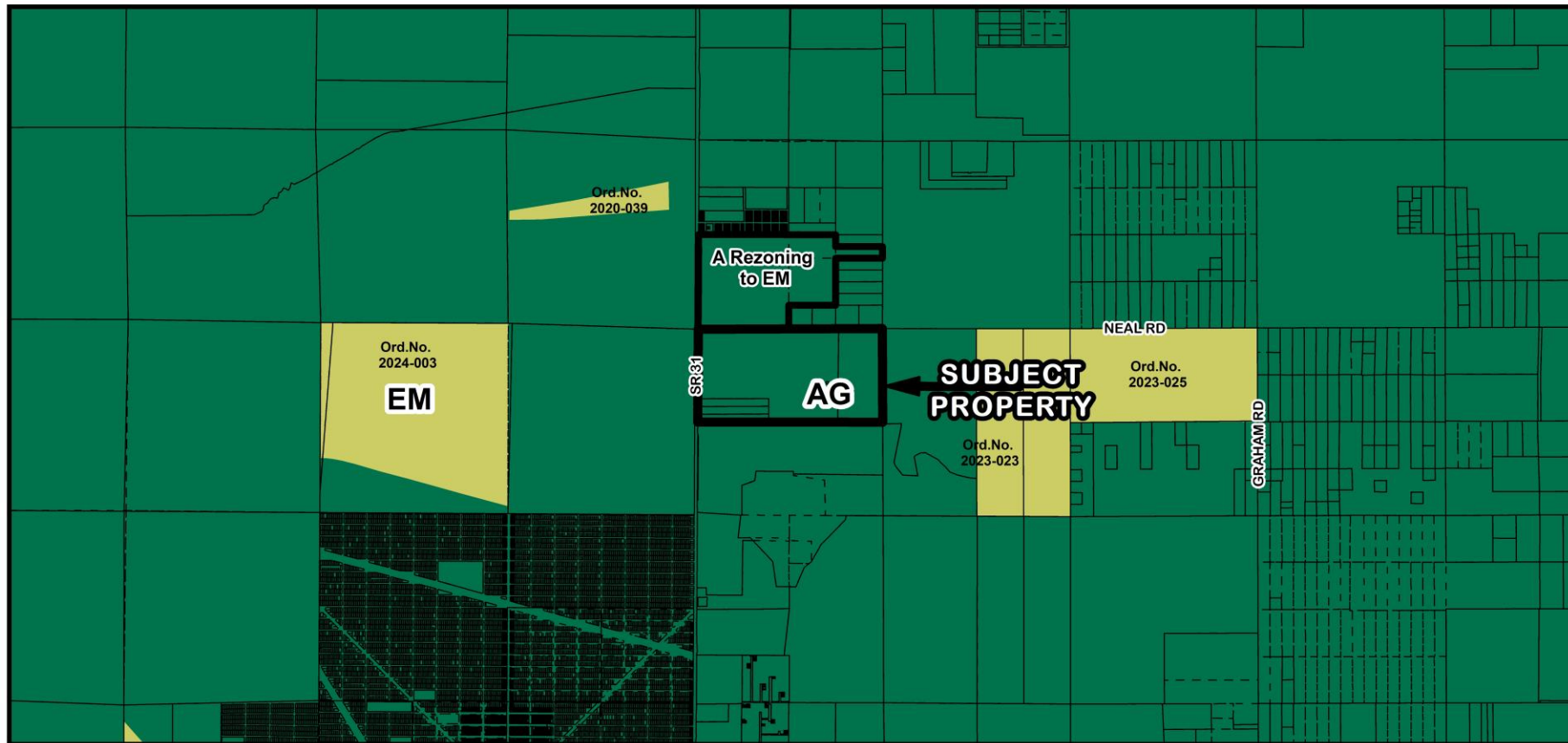




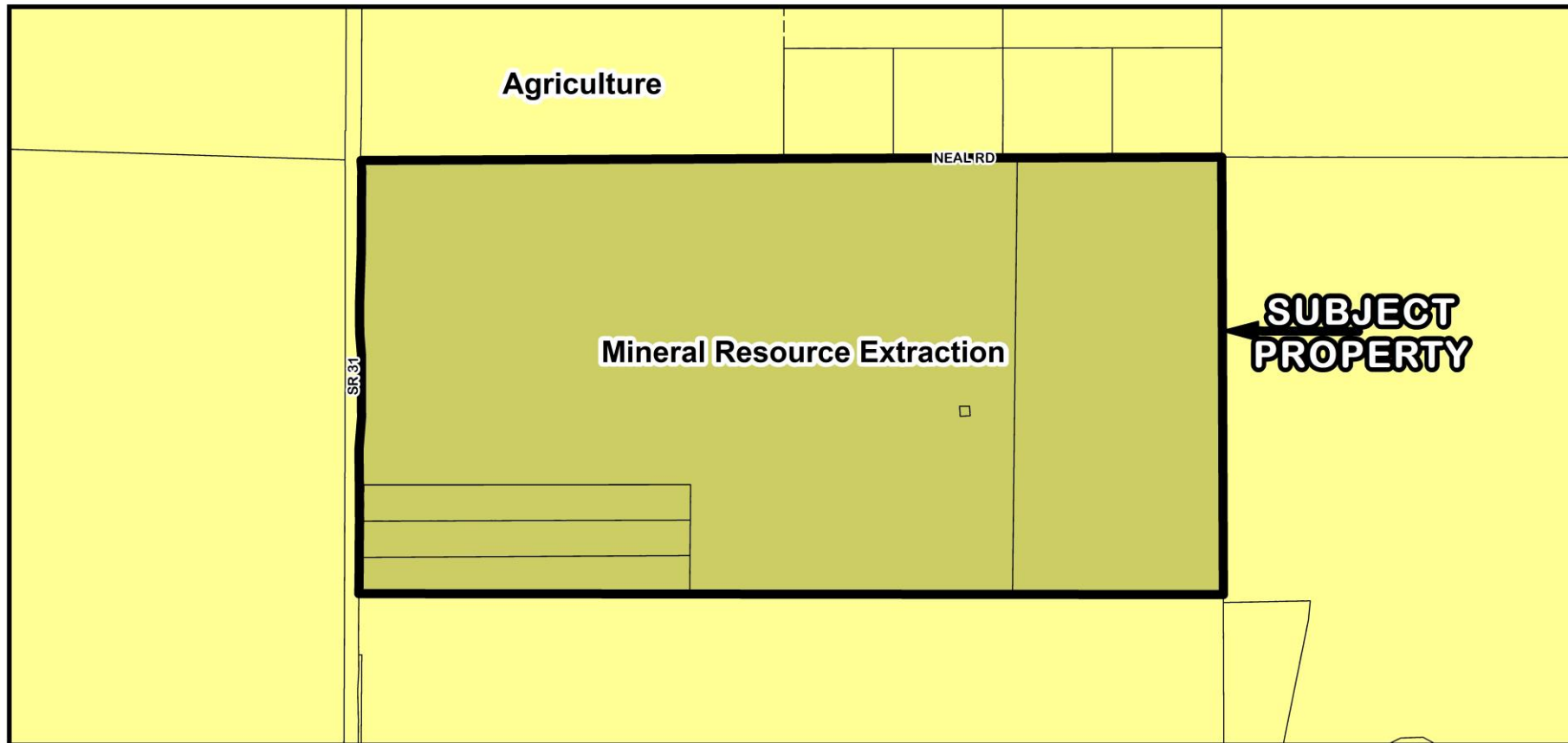


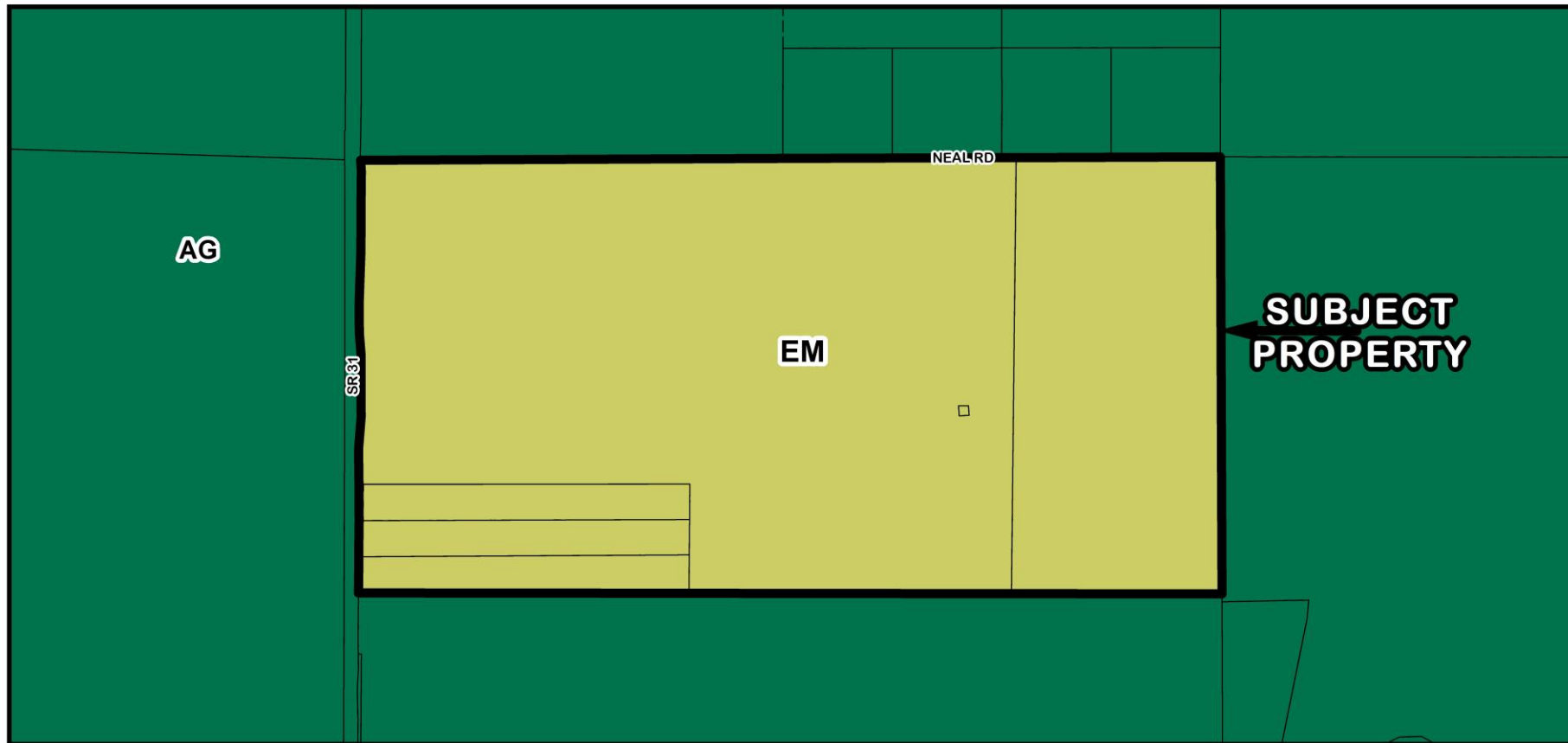


PAL-24-07 and Z-24-18 Surrounding Existing FLUM Designations



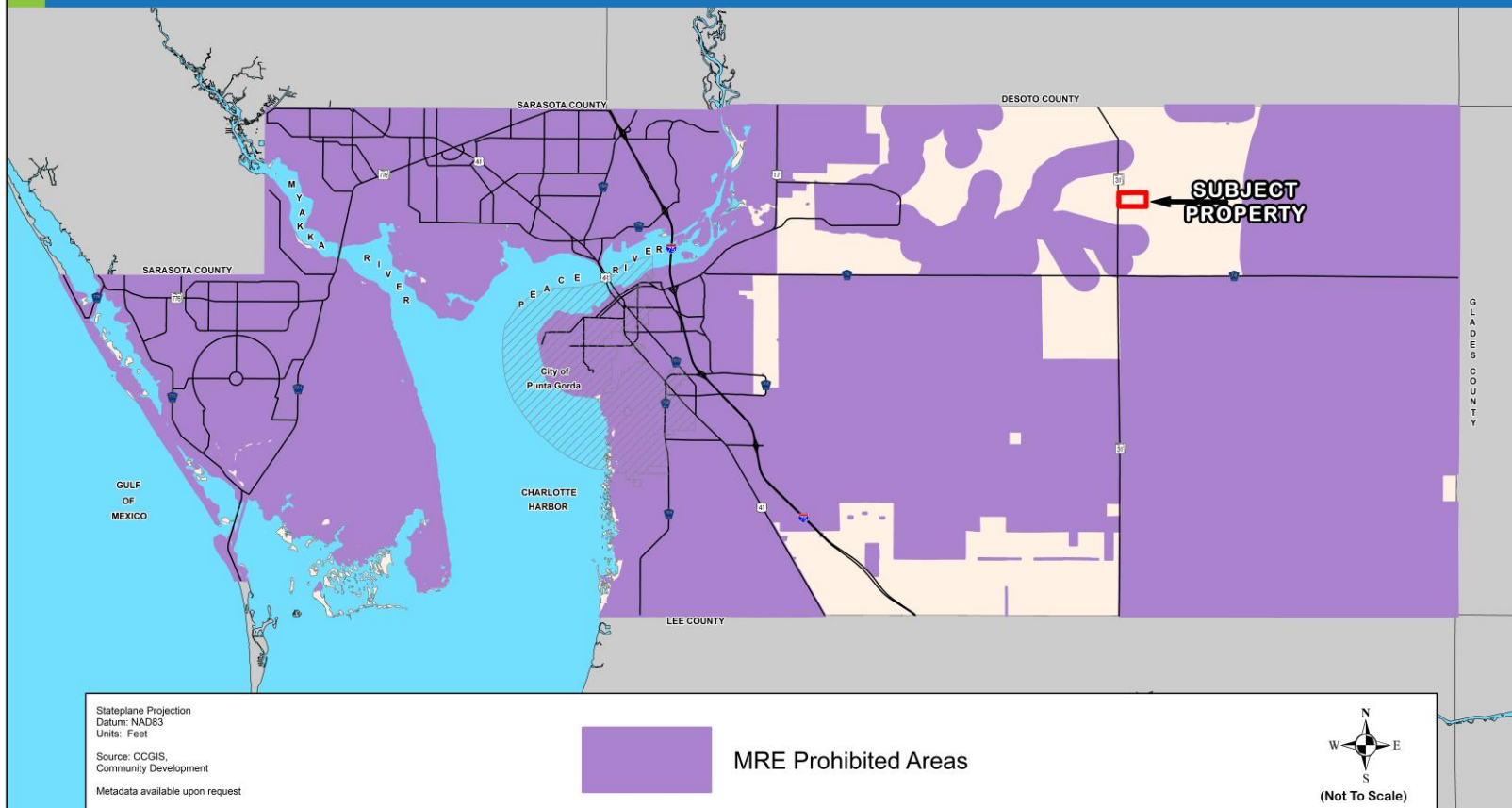
PAL-24-07 and Z-24-18 Surrounding Existing Zoning Designations





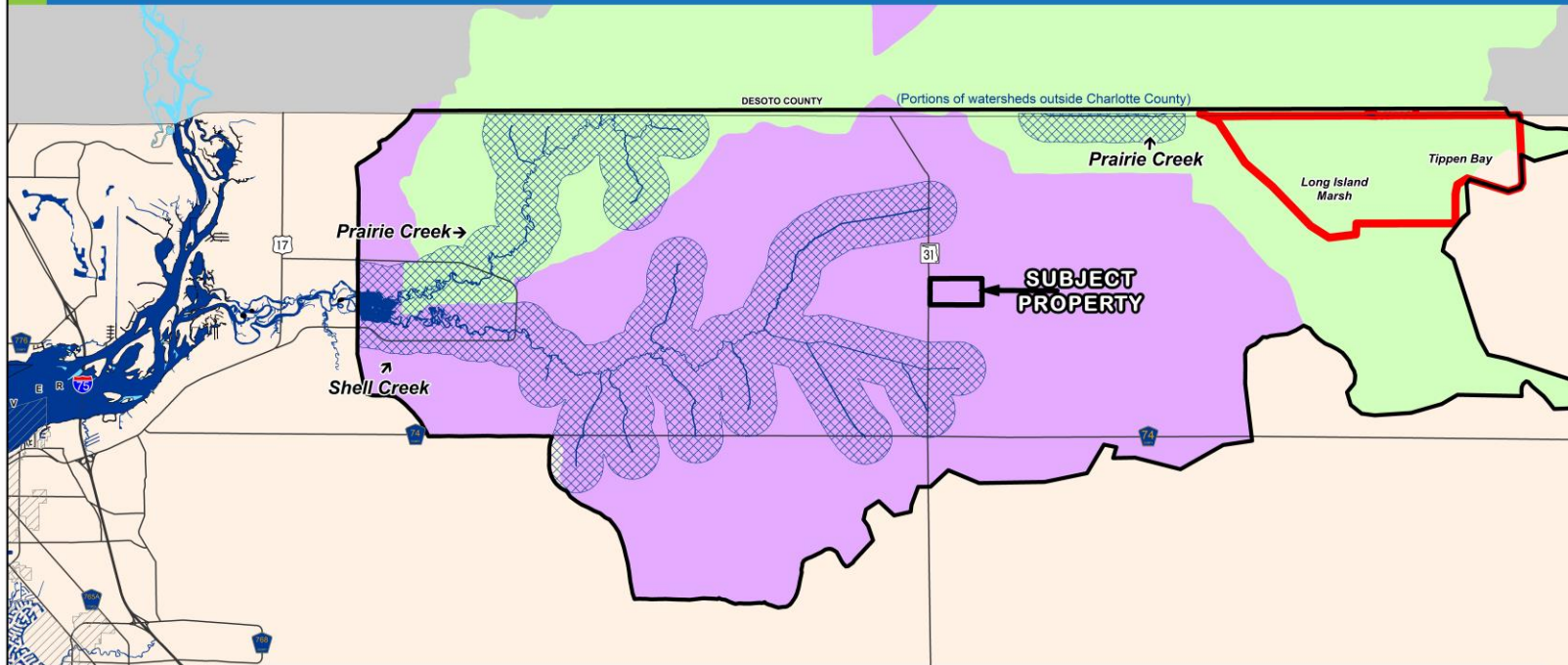
CHARLOTTE COUNTY

Future Land Use Map Series
Map #24: MRE Prohibited Locations



CHARLOTTE COUNTY

Future Land Use Map Series
Map #4: Watershed Overlay District



CHARLOTTE COUNTY

Future Land Use Map Series


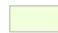
Map #6: Prime Aquifer Recharge Areas



Stateplane Projection
Datum: NAD83
Units: Feet

Source: CCGIS, SWFWMD,
SWFWMD, Community Development

Metadata available upon request

-  No recharge to very low recharge (0.0 to 1.0 inches per year) to the Upper Florida Aquifer
-  No discharge to very low discharge (0.0 to 1.0 inches per year) to the Upper Florida Aquifer

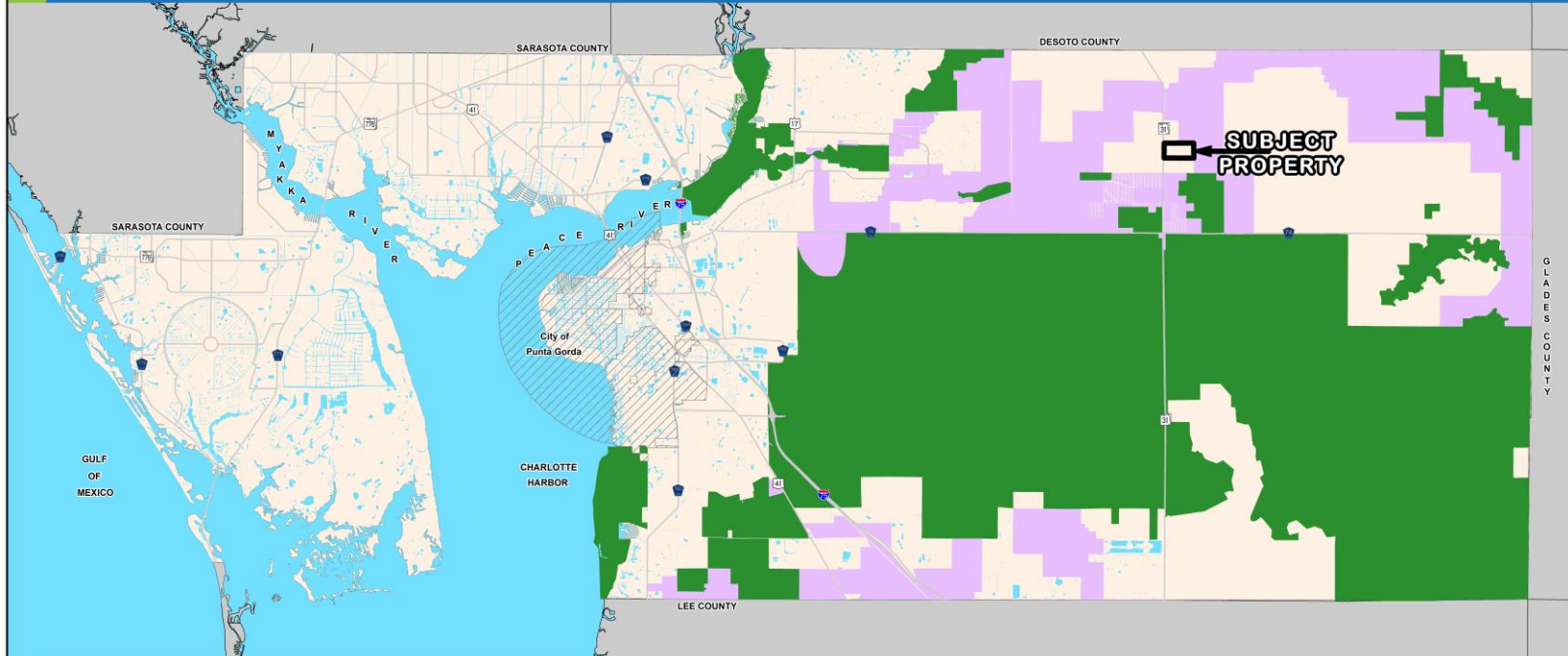


(Not To Scale)

CHARLOTTE COUNTY

Future Land Use Map Series

Map #22: Critical Wildlife Corridors



Stateplane Projection
Datum: NAD83
Units: Feet

Source: CCGIS
Community Development

Metadata available upon request



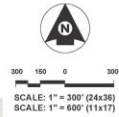
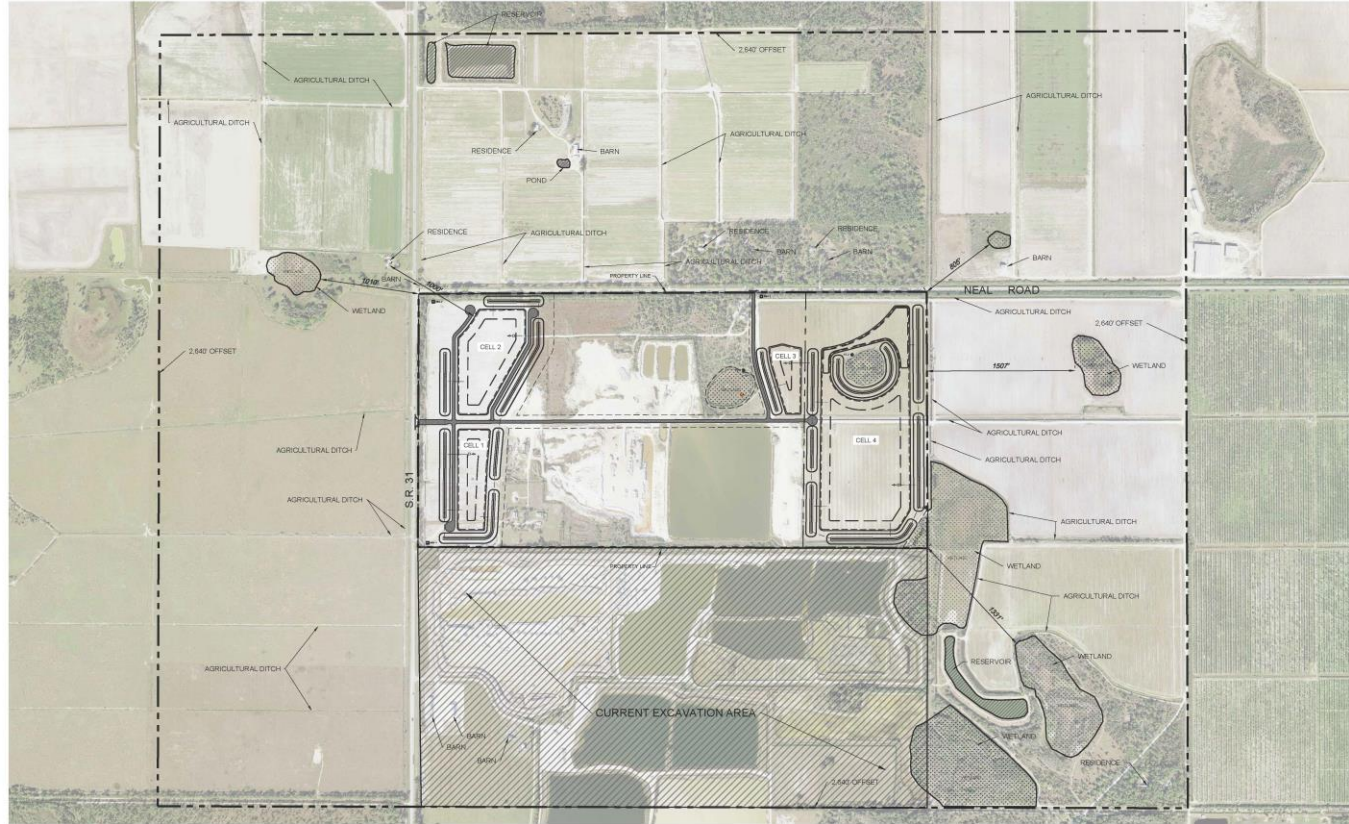
Wildlife Corridor Critical Linkages



Resource Conservation & Preservation



(Not To Scale)



REV.	DATE	BY	CHKD	DESCRIPTION

Project No.	23-0630
Project Manager	D H B
Project Engineer	-
Project Designer	-
Checked By	-
Approved By	D H B

REZONE FOR WILLIAMS EXCAVATION 1/2 MILE FEATURES EXHIBIT

PUNTA GORDA

SECTION 19, TOWNSHIP 48 SOUTH, RANGE 26 EAST

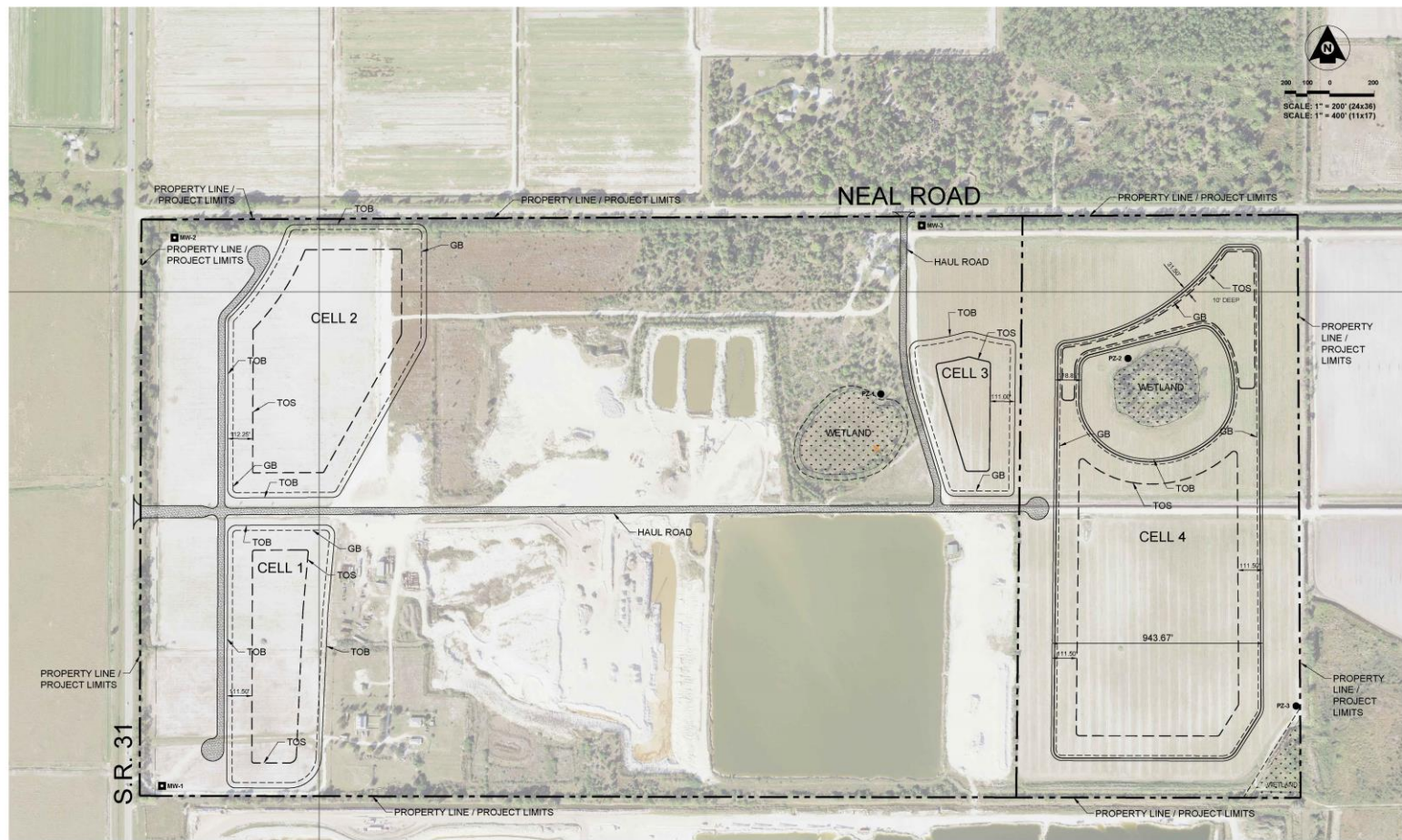
FLORIDA

GARY W. BAYNE, P.E.
FLORIDA REG No. 62474

DATE:	JUNE 2024	DRAWN:	NAVD 88
SHEET:	7	of:	7
PROJECT No.:	23-0630		



20 **PAL-24-07 and Z-24-18 Flood Zones (Subject Property - X Zone)**



					Project No.: 23-0630 Project Manager: DHB Project Engineer: _____ Project Designer: _____ Checked by: _____ Approved by: DHB	REZONE FOR WILLIAMS EXCAVATION POST RECLAMATION PLAN		DATE: JUNE 2024 DATUM: NAVD 88	
					PUNTA GORDA SECTION 19, TOWNSHIP 40 SOUTH, RANGE 26 EAST FLORIDA	GARY W. BAYNE, P.E. FLORIDA REG NO. 62614		SHEET 5 of 7 PROJECT NO: 23-0630	
REV.	DATE	BY	CHK'D	DESCRIPTION					

REZONE FOR WILLIAMS EXCAVATION POST RECLAMATION PLAN

GARY W. BAYNE, P.E.
FLORIDA REG No. 6247

DATE: JUNE 2024	DATE: NAVD 88
SHEET 5 of 7	
PROJECT No.: 23-0630	