



USDOT Safe Streets and Roads for All (SS4A) 2026 Implementation Grants

Overview

[Instructions & Resources](#)



Application

[Contact Info](#)
4 of 4 completed



[Team Members](#)
1 of 1 completed



[Details](#)
28 of 28 completed



[Categories](#)
1 of 1 completed



[Uploads](#)
6 of 8 required



Progress

95%

The application form closes on **05/26/2026 at 05:00 PM EDT (21:00 GMT)**

Contact Info

(4 of 4 completed)

You are currently logged into Valid Eval, so this form has been auto-filled with your name and your account's primary email address and contact info. To sign up with a different account, please either log out of Valid Eval and then return to this form or open this form in an "Incognito" or "Private Browsing" window.

Primary Contact First Name

Primary Contact Last Name

Bryan

Carr

Primary Contact Email

Entity/Community Name

bryan.carr@charlottecountyfl.gov

County of Charlotte





USDOT Safe Streets and Roads for All (SS4A) 2026 Implementation Grants

Overview

[Instructions & Resources](#)



Application

[Contact Info](#)
4 of 4 completed



[Team Members](#)
1 of 1 completed



[Details](#)
28 of 28 completed



[Categories](#)
1 of 1 completed



[Uploads](#)
6 of 8 required



Progress



The application form closes on **05/26/2026 at 05:00 PM EDT (21:00 GMT)**

Team Members

(1 of 1 completed)

Important: Real-time collaboration features for draft applications are still in early beta release. For now, to avoid any issues with conflicting changes, we suggest that only one person works on the application at a time. Please coordinate with your team to make sure everyone takes turns editing, so you don't run into any problems.

| NAME EMAIL | ROLE | LAST DATE SENT | ACCEPTED | ACTIONS |
|--|------|----------------|----------|---------|
| Bryan Carr bryan.carr@charlottecountyfl.gov | | N/A | ACCEPTED | |



USDOT Safe Streets and Roads for All (SS4A) 2026 Implementation Grants

Overview

[Instructions & Resources](#)



Application

[Contact Info](#)
4 of 4 completed



[Team Members](#)
1 of 1 completed



[Details](#)
28 of 28 completed



[Categories](#)
1 of 1 completed



[Uploads](#)
8 of 8 completed



Progress



The application form closes on **05/26/2026 at 05:00 PM EDT (21:00 GMT)**

Details

(28 of 28 completed)

Lead Applicant Information

Primary Telephone number

9418335600



Entity Community Type

County Government



Applicant State

FL



Applicant 5-digit Zip Code

33982



Applicant UEI

X3RBY2VEDJT3



A Unique Entity Identifier (UEI) can be obtained by registering at <https://sam.gov/>.

In addition to the Primary Contact, please provide an additional point of contact. **While contractors are permitted to develop and submit application materials on behalf of an applicant, the points of contact listed on the application must be staff of the applicant agency.** One of the contacts should be the same person who signs the SF-424 General Form submitted with the application. In the event we need to contact you, we usually require applicants to respond within a few business days. Listed contacts should be people who will be responsive or put up away messages with other points of contact from May through December 2026.

Alternate Contact First Name

Cassandra



Alternate Contact Last Name

Bonds



Alternate Telephone number

9417644981



Alternate Email

Cassandra.Bonds@charlottecountyfl.gov



Applicant Jurisdiction Information

Information Total jurisdiction population is based on 2020 U.S. Census data for all jurisdictions included in the application.

Total Jurisdiction Population

186,847



Crash Data

The Total Count of Motor Vehicle-Involved Roadway Fatalities from 2019-2023 in the jurisdiction(s) covered by this application should be based on DOT's Fatality Analysis Reporting System (FARS) data, an alternative traffic fatality dataset, or a comparable data set with roadway fatality information. This should be a whole number. If using a dataset different from FARS, cite the source and provide a link to or upload the data. The Total Average Annual Fatality Rate for the jurisdiction(s) covered by this application is calculated by dividing the 5-year annual average from the total count of fatalities (2019-2023) listed above by the population of the jurisdiction(s) covered by this application (using 2020 Census data). The rate should be normalized to per 100,000 persons. Refer to <https://www.transportation.gov/grants/ss4a/calculating-average-annual-fatality-rate-ss4a> for more information on how to gather FARS data information and calculate Average Annual Fatality Rate.

Total Count Motor Vehicle-Involved Roadway Fatalities (2019-2023)

149



Alternative Fatality Data Source (upload documentation in Uploads section if applicable)



Total Average Annual Fatality Rate (per 100,000 population)

15.9



Previous SS4A Grant Awards

Has your jurisdiction received an SS4A award in a previous year (i.e., FY22, FY23, FY24, or FY25)?

Planning and Demonstration Grant

Implementation Grant

No previous SS4A awards

Project Details

Project Title

Charlotte County Post-Crash Care and Field Blood Delivery Program



Project Goal

Charlotte County Fire & EMS will implement a countywide Post-Crash Care and Field Blood Delivery Program to improve survivability for patients



Indicate applicant's roadway safety responsibility

Applicant owns and /or maintains the roadway(s) impacted by the proposed project

Applicant has safety responsibilities that affect roadway(s) impacted by the proposed project

Applicant has an agreement from the agency that has ownership and/or maintenance responsibilities for the roadway(s) impacted by the proposed project

Other



Action Plan

Plan Weblink

Action Plan



Action Plan Owner

- We are applying with an Action Plan developed by our jurisdiction
- We are applying with an Action Plan developed by another jurisdiction

Action Plan Owner Details

Charlotte County-Punta Gorda Metropolitan Planning Organization (CC-PG MPO)



Underserved Communities

Identify whether the jurisdiction(s) covered by this application AND the project area(s) are, or include, underserved communities. Refer to <https://www.transportation.gov/grants/ss4a/identifying-underserved-communities> for instructions.

Are underserved communities included in the jurisdiction(s) covered by this application?

The area covered by this application is partially located in an underserved community



Are underserved communities included in the project areas covered by this application?

The project area covered by this application is partially located in an underserved community



Implementation Project Area Crash History

To determine project area crashes, you may use a data source other than FARS. Applicants without reliable serious injury data may use suspected serious injury data. The data source must be uploaded as an attachment to this application. 2019-2023 data is recommended, but applicants may use the most recent five-year data available.

Are the project locations on the High Injury Network?

- Yes
- No
- Partially

Number of fatalities in project area(s) (2019-2023)

149



Number of Serious Injury Crashes in project area(s) (2019-2023)

815



Number of Suspected Injury Crashes in project area(s) (2019-2023)



Supplemental Planning and Demonstration Activities

If your application includes Supplemental Planning or Demonstration Activities, please indicate what type of Supplemental Planning and Demonstration Activities you are proposing. If your application does not contain supplemental planning or demonstration activities, select "Not Applicable" below. For more information on eligible Supplemental Planning and Demonstration Activities, please refer to: <https://www.transportation.gov/grants/ss4a/planning-and-demonstration-activities>

Supplemental Planning Activities

- Additional Analysis
- Expanded Data Collection
- Complementary Planning
- Add elements to and/or update existing Comprehensive Safety Action Plan
- Road Safety Audits
- Not Applicable
- Other (please specify)

Other (specify here)



Demonstration Activities

- Quick-builds using temporary materials
- Demonstration/Pilot of Behavioral Program
- Demonstration/Pilot of Operational Program
- Demonstration/Pilot of technology to support safety planning and analysis
- MUTCD Engineering Studies
- Not Applicable
- Other (please specify)

Other (specify here)



Evaluating and Using Supplemental Planning and Demonstration Activities to Inform a Comprehensive Safety Action Plan

Supplemental planning and demonstration activity results



Partial Funding

- Yes
- No
- N/A

Cost Breakdown

Information provided in this section should be consistent with the information provided in your SF-424 forms and in the Planning and Demonstration Grant Supplemental Estimated Budget. Whole numbers are required for Federal share (no cents). The Total Project Cost should be the sum of all Federal and non-Federal funds. The "Other Federal Funds" field below may include funds directly received from a Federal agency or funds received through a pass through agency (e.g., state governmental agency) that originated as federal funds. Please leave blank if not applicable. The SS4A Federal Funding Request (Federal share) may not exceed 80% of the Total Project Cost. For guidance about non-federal match, visit <https://www.transportation.gov/grants/ss4a/matching-funds>

Total SS4A Funding Request

555,561



Total SS4A Non-Federal Match

138,890



Total SS4A Project Cost

694,451



Total Other Federal Funds (if applicable)

0



Are you using Tribal Transportation Program (TTP) funds as non-Federal match? (Federally recognized Tribal governments only)

No



Funding requests may include indirect rate using a Federally approved cognizant rate or the 15% de minimus. For more about indirect rates, visit <https://www.transportation.gov/grants/ss4a/costs-and-contracting>. If using a Federally approved cognizant rate, please upload your Federal cognizant agency letter as part of your Supporting Documents below.

Does your funding request include indirect rate?

Yes. I have uploaded a letter from my cognizant federal agency below.

Yes. I am using the 15% de minimus.

No.



USDOT Safe Streets and Roads for All (SS4A) 2026 Implementation Grants

Overview

[Instructions & Resources](#)



Application

[Contact Info](#)
4 of 4 completed



[Team Members](#)
1 of 1 completed



[Details](#)
28 of 28 completed



[Categories](#)
1 of 1 completed



[Uploads](#)
8 of 8 completed



Progress

100%

The application form closes on **05/26/2026 at 05:00 PM EDT (21:00 GMT)**

Categories

(1 of 1 completed)

The following category tags are used to match submissions to expert judges in their field of expertise. Please select the primary categories for your submission.

Primary Project Type

Public Safety Infrastructure Strategies: Focus on programs te...



USDOT Safe Streets and Roads for All (SS4A) 2026 Implementation Grants

Overview

[Instructions & Resources](#)



Application

[Contact Info](#)
4 of 4 completed



[Team Members](#)
1 of 1 completed



[Details](#)
28 of 28 completed



[Categories](#)
1 of 1 completed



[Uploads](#)
8 of 8 completed



Progress

100%

The application form closes on **05/26/2026 at 05:00 PM EDT (21:00 GMT)**

Uploads

(8 of 8 completed)

SF-424 Application for Federal Assistance (required) (PDF)

Drop file here or [click](#)



SF-424C Budget Information for Construction Programs (required) (PDF)

Drop file here or [click](#)



SF-424D Assurances for Construction Programs (required) (PDF)

Drop file here or [click](#) ✓

SF-LLL Disclosure of Lobbying Activities (required) (PDF)

Drop file here or [click](#) ✓

Narrative (required) (PDF)

Drop file here or [click](#) ✓

Map (required) (PDF)

Drop file here or [click](#) ✓

Spatial Data (Zip file)

Drop file here or [click](#) ✓

Spatial Data (KML file)

Drop file here or [click](#) ✓

Implementation Grant Supplemental Budget (required) (XLS)

Drop file here or [click](#) ✓

Alternative Fatality Data (PDF)

Drop file here or [click](#) ✓

Self-Certification Eligibility Worksheet (required) (PDF)

Drop file here or [click](#) ✓


Action Plan (optional) (PDF)

Drop file here or [click](#) ✓


Federal Cognizant Agency Letter (optional) (PDF)

Drop file here or [click](#) ✓

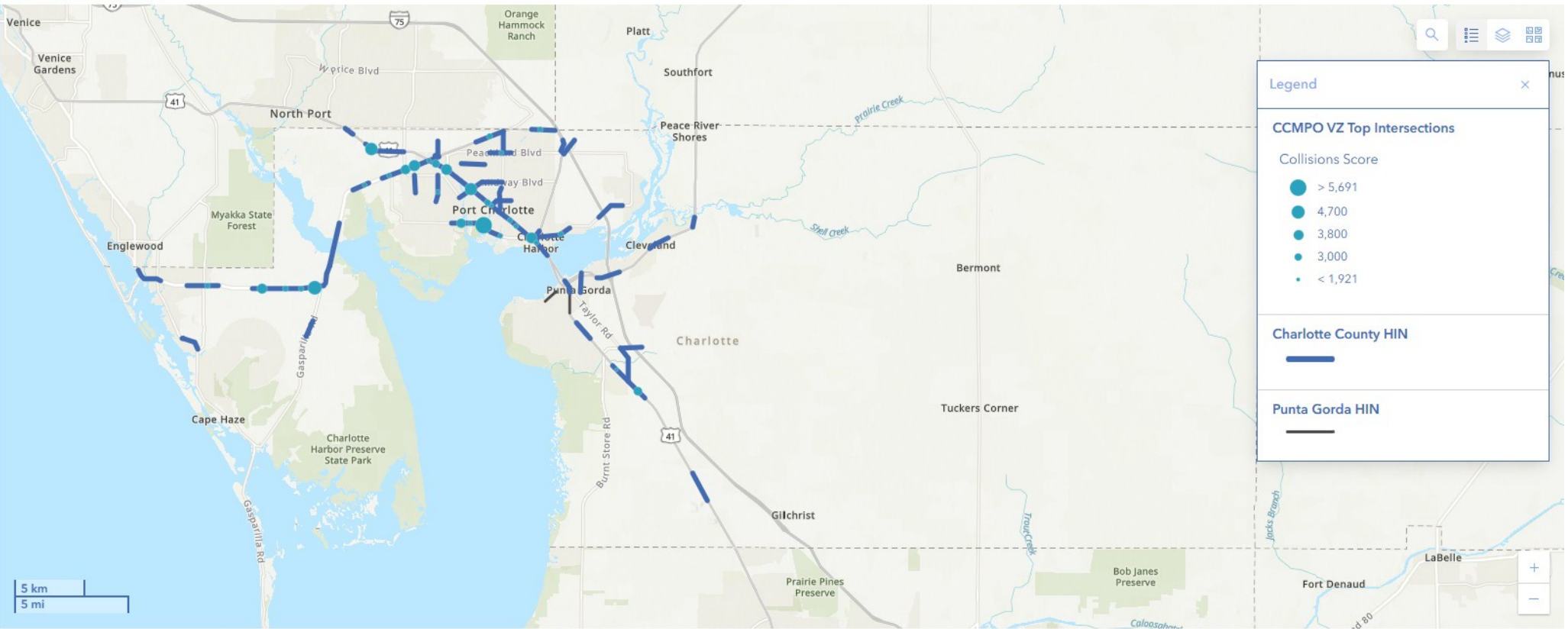
Letters of Support (optional) (PDF)

Drop file here or [click](#) 

Supporting Documents (optional) (PDF)

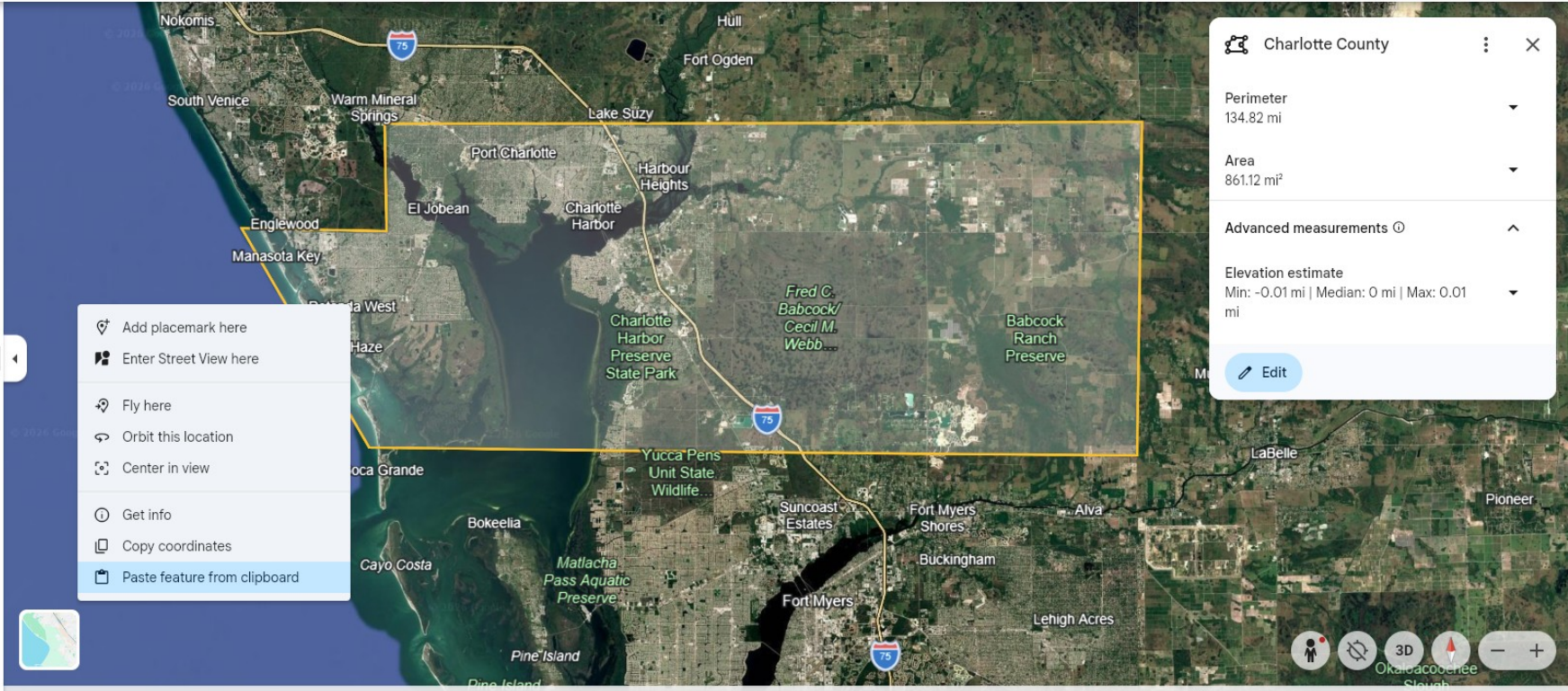
Drop file here or [click](#) 

Collision Location Viewer



Search Google Earth

- lap contents
- Charlotte County



- Add placemark here
- Enter Street View here
- Fly here
- Orbit this location
- Center in view
- Get info
- Copy coordinates
- Paste feature from clipboard

Charlotte County

Perimeter
134.82 mi

Area
861.12 mi²

Advanced measurements

Elevation estimate
Min: -0.01 mi | Median: 0 mi | Max: 0.01 mi

Edit

Project Narrative

Charlotte County Post-Crash Care and Field Blood Delivery Program

Overview

Charlotte County Board of County Commissioners, through Charlotte County Fire & EMS, is requesting SS4A Implementation Grant funding to establish the Charlotte County Post-Crash Care and Field Blood Delivery Program. The project will improve survivability for patients involved in serious roadway crashes by reducing the time from crash occurrence to advanced prehospital trauma resuscitation, including whole blood delivery for qualifying patients suffering from severe bleeding and/or hemorrhagic shock.

The program will deploy two EMS Captains in two staff response vehicles equipped with blood storage and transport systems, blood warmers, temperature monitoring, transfusion supplies, documentation tools, and inventory tracking. EMS Captains will respond to serious roadway crash scenes, EMS intercept points, and other qualifying post-crash care incidents to support frontline crews and improve the continuum of care from the crash scene to the receiving hospital or trauma center.

Charlotte County's 2020 Census population was 186,847, the County includes suburban, rural, coastal, and high-growth areas. From 2019–2023, the County identified 149 roadway fatalities in the project area. The proposed program addresses a critical post-crash care gap by bringing blood products closer to the point of injury, particularly where crash severity, distance, traffic conditions, or scene complexity may delay access to hospital-based resuscitation.

Location

The project area is countywide and includes Charlotte County's High Injury Network and other fatal and serious-injury crash locations identified through the Charlotte County–Punta Gorda Comprehensive Safety Action Plan, Vision Zero crash data, Signal 4 Analytics, and related roadway safety analysis. The project will serve serious roadway trauma incidents across the County, with performance tracking focused on High Injury Network corridors and crash clusters where fatal and serious-injury crashes are concentrated.

Because this is a public safety infrastructure and post-crash care project, exact service locations are not limited to a single corridor or intersection. EMS Captain response vehicles will be deployed based on 9-1-1 dispatch information, crash severity, field provider request, proximity, and patient condition. The program will prioritize response to severe roadway trauma incidents on or near the High Injury Network, while also maintaining countywide capability for serious crashes occurring outside mapped HIN segments.

Response to Merit Criteria

Merit Criterion #1: Safety Need

Charlotte County has a documented roadway safety need based on fatal and serious-injury crash history, including 149 fatalities during the 2019–2023 period. Severe roadway trauma creates a

narrow window for lifesaving intervention, especially for patients experiencing traumatic hemorrhage. Existing EMS units provide advanced life support, hemorrhage control, airway management, IV/IO access, and rapid transport; however, Charlotte County Fire & EMS does not currently operate a dedicated field blood delivery program.

This project addresses that safety need by improving post-crash care for patients suffering life-threatening blood loss. Whole blood delivery at or near the crash scene can shorten the time to advanced resuscitation and support improved patient condition before arrival at a hospital or trauma center.

Merit Criterion #2: Safety Impact

The project will improve safety outcomes by reducing delays between crash occurrence, EMS arrival, advanced resuscitation, and hospital transfer of care. The program will strengthen the post-crash care component of the Safe System approach by deploying specialized EMS Captains with whole blood, transfusion equipment, and clinical support to serious roadway trauma incidents.

Key performance measures will include roadway trauma activations, crash location, High Injury Network overlap, dispatch-to-enroute time, EMS Captain response time, time to blood delivery, units transfused, patient condition, protocol compliance, product waste, and QA/QI findings. This data will support before-and-after evaluation and annual reporting.

Merit Criterion #3: Implementation Costs

The estimated project cost is approximately \$694 thousand, including EMS Captain personnel, training, medical oversight, blood storage and warming equipment, vehicle outfitting, blood-product logistics, supplies, data tracking, quality assurance, and performance reporting. The County anticipates using an 80% federal / 20% local match structure. The project is cost-effective because it uses two staff vehicles and a controlled EMS Captain deployment model rather than equipping every ambulance during initial implementation.

This approach limits product waste, improves inventory control, reduces startup complexity, and allows the County to evaluate performance before future expansion.

Merit Criterion #4: Engagement and Collaboration

The project will be implemented through coordination among Charlotte County Fire & EMS, County grants and finance staff, procurement, legal, the Medical Director, 9-1-1/dispatch, receiving hospitals, trauma partners, blood-bank partners, and the Charlotte County–Punta Gorda MPO. These partners will support protocol development, product supply and rotation, training, clinical oversight, performance measurement, and Action Plan updates.

The County will also coordinate with public safety and transportation stakeholders to ensure the program supports roadway safety priorities, High Injury Network response, and post-crash care improvements.

Merit Criterion #5: Supplemental Planning and Demonstration Activities

The project will generate data to inform future updates to the Comprehensive Safety Action Plan. Results will be used to refine post-crash care strategies, identify priority deployment areas, evaluate High Injury Network response, update performance measures, and determine whether additional vehicles, stations, or response zones should be included in future program expansion.

Project Readiness

Charlotte County Fire & EMS can complete the project within five years of grant agreement execution. The project does not require roadway construction, right-of-way acquisition, utility relocation, or facility construction. NEPA and federal environmental review impacts are expected to be minimal or not applicable because the project primarily involves equipment purchase, vehicle outfitting, training, protocols, and public safety operations using existing vehicles and facilities.

Major Milestones

Months 1–3: Finalize grant agreement, project team, procurement plan, partner agreements, medical director protocols, and equipment specifications.

Months 3–6: Procure equipment, outfit EMS Captain vehicles, develop training materials, complete blood-bank and hospital coordination, and configure documentation/data tracking.

Months 6–12: Train EMS Captains and field personnel, validate competencies, test equipment, finalize dispatch activation criteria, and begin controlled implementation.

Months 12–24: Operate field blood delivery program, collect performance data, conduct QA/QI review, monitor product use and waste, and submit required reports.

Months 24–48: Evaluate outcomes, refine protocols, update deployment model, and coordinate findings with MPO and trauma-system partners.

Months 49–60: Complete final evaluation, incorporate findings into Action Plan updates and annual reporting, and transition sustainable operating costs into County or partner-supported funding sources.

The project is ready for implementation because it uses existing Fire/EMS leadership, established medical direction, County procurement and grant management systems, and regional aeromedical/blood-bank coordination.

All applicants should follow the instructions in the NOFO to correctly apply for a grant. See the [SS4A website](#) for more information.

Table 1 of the [SS4A NOFO](#) describes [seven components of an Action Plan](#), which correspond to the questions in this worksheet. Applicants should use this worksheet to determine whether their existing plan(s) contains the required components to be considered an eligible Action Plan for SS4A.

This worksheet is required for all SS4A **Implementation Grant** applications and any **Planning and Demonstration Grant applications to conduct Supplemental Planning/Demonstration Activities only**. Please complete the form in its entirety, do not adjust the formatting or headings of the worksheet, and upload the completed PDF with your application.

Eligibility

An Action Plan is considered eligible for an SS4A application for an Implementation Grant or a Planning and Demonstration Grant to conduct Supplemental Planning/Demonstration Activities if the following two conditions are met:

- You can answer "YES" to Questions **3, 6, and 8** in this worksheet; *and*
- You can answer "YES" to **at least three of the five remaining** Questions, **1, 2, 4, 5, and 7**.

If both conditions are not met, an applicant is still eligible to apply for a Planning and Demonstration Grant to fund the creation of a new Action Plan or updates to an existing Action Plan to meet SS4A requirements.

Applicant Information

Lead Applicant: Charlotte County BOCC UEI: X3RBY2VEDJT3

Action Plan Documents

In the table below, list the relevant Action Plan and any additional plans or documents that you reference in this form. **Up to three plans or documents may be included**. Please provide a hyperlink to any documents available online or indicate that the Action Plan or other documents will be uploaded in Valid Eval as part of your application. Note that, to be considered an eligible Action Plan for SS4A, the plan(s) coverage must be broader than just a corridor, neighborhood, or specific location.

| Document Title | Link | Date of Most Recent Update |
|---|---|----------------------------|
| Charlotte County-Punta Gorda Comprehensive Safety Action Plan | https://ccpgmpo.gov/mpo-documents/ss4a-action-plan/ | 12/2024 |
| | | |
| | | |



Action Plan Components

For each question below, answer "YES" or "NO." If "YES," list the relevant plan(s) or supporting documentation that address the condition and the specific page number(s) in each document that corroborates your response. This form provides space to reference multiple plans, but please list only the most relevant document(s).

1. Leadership Commitment and Goal Setting

Are **BOTH** of the following true?

- A high-ranking official and/or governing body in the jurisdiction publicly committed to an eventual goal of zero roadway fatalities and serious injuries; and
- The commitment includes either setting a target date to reach zero OR setting one or more targets to achieve a reduction in roadway fatalities and serious injuries by a specific date.

YES

NO

Note: This may include a resolution, policy, ordinance, executive order, or other official announcement from a high-ranking official and the official adoption of a plan that includes the commitment by a legislative body.

If "YES," please list the relevant document(s) and page number(s) that corroborate your response.

| Document Title | Page Number(s) |
|---|----------------|
| Charlotte County-Punta Gorda MPO – Safe Streets and Roads for All Comprehensive Safety Action Plan, MPO Board Meeting Presentation, July 29, 2024 | 5 |
| CCPGMPO Comprehensive Safety Action Plan Task Force Briefing Sheet, November 17, 2023 | 1-2 |
| Charlotte County-Punta Gorda MPO Draft UPWP FY 2026/2027–FY 2027/2028, March 30, 2026 | 8, 32 |

2. Planning Structure

To develop the Action Plan, was a committee, task force, implementation group, or similar body established and charged with the plan's development, implementation, and monitoring?

YES

NO

Note: This should include a description of the membership of the group and what role they play in the development, implementation, and monitoring of the Action Plan.

If "YES," please list the relevant document(s) and page number(s) that corroborate your response.

| Document Title | Page Number(s) |
|--|----------------|
| Charlotte County-Punta Gorda Comprehensive Safety Action Plan, December 2024 | 21, 26, 68 |
| | |
| | |



3. Safety Analysis

Does the Action Plan include **ALL** of the following?

- Analysis of existing conditions and historical trends to provide a baseline level of crashes involving fatalities and serious injuries across a jurisdiction, locality, Tribe, or region;
- Analysis of the location(s) of crashes, the severity, contributing factors, and crash types;
- Analysis of systemic and specific safety needs, as needed (e.g., high-risk road features, specific safety needs of relevant road users, or post-crash care and emergency response); and,
- A geospatial identification (geographic or locational data using maps) of higher risk locations.

YES

NO

Note: Availability and level of detail of safety data may vary greatly by location. The [Fatality and Injury Reporting System Tool \(FIRST\)](#) provides county- and city-level data. When available, local data should be used to supplement nationally available data sets.

If "YES," please list the relevant document(s) and page number(s) that corroborate your response.

| Document Title | Page Number(s) |
|--|---------------------|
| Charlotte County-Punta Gorda Comprehensive Safety Action Plan, December 2024 | 5, 10-17, 38, 43-58 |
| | |
| | |

4. Engagement and Collaboration

Did development of the Action Plan include **ALL** of the following activities?

- Engagement with the public and relevant stakeholders, including the private sector and community groups;
- Incorporation of information received from the engagement and collaboration into the plan; and
- Coordination that included inter- and intra-governmental cooperation and collaboration, as appropriate.

YES

NO

Note: This should include a description of public meetings, participation in public and private events, and proactive meetings with stakeholders.

If "YES," please list the relevant document(s) and page number(s) that corroborate your response.

| Document Title | Page Number(s) |
|--|----------------------|
| Charlotte County-Punta Gorda Comprehensive Safety Action Plan, December 2024 | 1-2, 5, 8, 21, 26-27 |
| | |
| | |



5. Policy and Process Changes

Are **BOTH** of the following true?

- The plan development included an assessment of current policies, plans, guidelines, and/or standards to identify opportunities to improve how processes prioritize safety; and
- The plan discusses implementation through the adoption of revised or new policies, guidelines, and/or standards.

YES

NO

Note: This may include existing and/or recommended Complete Streets policy, guidelines for community engagement and collaboration, policy for prioritizing areas of greatest need, local laws (e.g., speed limit), design guidelines, and other policies and processes that prioritize safety.

If "YES," please list the relevant document(s) and page number(s) that corroborate your response.

| Document Title | Page Number(s) |
|--|-----------------------|
| Charlotte County-Punta Gorda Comprehensive Safety Action Plan, December 2024 | 2, 6-7, 38-39, 44, 68 |
| | |
| | |

6. Strategy and Project Selections

Does the plan identify a comprehensive set of projects and strategies to address the safety problems in the Action Plan, with information about time ranges when projects and strategies will be deployed, and an explanation of project prioritization criteria?

YES

NO

Note: This should include one or more lists of community-wide multi-modal and multi-disciplinary projects that respond to safety problems and reflect community input, indication of expected time ranges to complete each project, and a description of how your community will prioritize projects in the future.

If "YES," please list the relevant document(s) and page number(s) that corroborate your response.

| Document Title | Page Number(s) |
|--|----------------|
| Charlotte County-Punta Gorda Comprehensive Safety Action Plan, December 2024 | 1-7, 27, 44-58 |
| | |
| | |



7. Progress and Transparency

Does the plan include **BOTH** of the following?

- A description of how progress will be measured over time that includes, at a minimum, outcome data.
- The plan is posted publicly online.

YES

NO

Note: This should include a progress reporting structure and list of proposed metrics.

If "YES," please list the relevant document(s) and page number(s) that corroborate your response.

| Document Title | Page Number(s) |
|--|----------------------|
| Charlotte County-Punta Gorda Comprehensive Safety Action Plan, December 2024 | 2, 9, 12, 29 |
| Charlotte County-Punta Gorda MPO Website – Charlotte County Comprehensive Safety Action Plan | N/A – public webpage |
| | |

8. Action Plan Date

Was at least one of your plans finalized and/or last updated between 2021 and May 1, 2026?

YES

NO

Note: Updates may include major revisions, updates to the data used for analysis, status updates, or the addition of supplemental planning documents, including but not limited to an ADA Transition Plan, one or more Road Safety Audits conducted in high-crash locations, or a Vulnerable Road User Plan.

If "YES," please list your most recent document, date of finalization, and page number(s) that corroborate your response.

| Document Title | Date of Most Recent Update | Page Number(s) |
|---|----------------------------|----------------|
| Charlotte County-Punta Gorda Comprehensive Safety Action Plan | December 2024 | 1 |



SS4A Implementation Grant Application - Supplemental Estimated Budget

This budget template should be submitted with an Implementation Grant application. This template is structured based on Table 5 of the FY26 NOFO and illustrates the appropriate level of detail for project-level budget estimation. Please be as detailed as possible.

Please note that this form is set up to calculate project costs from any sub-activities and to calculate subtotals and totals. Please only enter information into white cells; the gray shaded cells are calculated based on the inputs to the white cells. If you add or remove rows to meet your project needs, check that these calculations are correct before submitting.

Note: The "Other Federal Funds" column listed below may include funds directly received from a Federal agency or funds received through a pass through agency (e.g., state governmental agency) that originated as federal funds.

Supplemental Estimated Budget

Itemized Estimated Costs of the (A) Supplemental Action Plan Activities (if applicable)

| Activities | SS4A Federal Request | SS4A Non-Federal Match | Total SS4A Project Cost | Other Federal Funds (if applicable) |
|--|----------------------|------------------------|-------------------------|-------------------------------------|
| Supplemental Planning or Demonstration Activity #1 | \$ - | \$ - | \$ - | \$ - |
| <i>Component</i> | \$ - | \$ - | \$ - | \$ - |
| <i>Component</i> | \$ - | \$ - | \$ - | \$ - |
| <i>Component</i> | \$ - | \$ - | \$ - | \$ - |
| Supplemental Planning or Demonstration Activity #2 | \$ - | \$ - | \$ - | \$ - |
| <i>Component</i> | \$ - | \$ - | \$ - | \$ - |
| <i>Component</i> | \$ - | \$ - | \$ - | \$ - |
| <i>Component</i> | \$ - | \$ - | \$ - | \$ - |
| Subtotal Budget for (A) Supplemental Action Plan Activities | \$ - | \$ - | \$ - | \$ - |

Itemized Estimated Costs of the (B) Planning, Design, and Development Activities (if applicable)

| Activities | SS4A Federal Request | SS4A Non-Federal Match | Total SS4A Project Cost | Other Federal Funds (if applicable) |
|---|----------------------|------------------------|-------------------------|-------------------------------------|
| Planning, Design, and Development - Location or Project #1 | \$ - | \$ - | \$ - | \$ - |
| <i>Individual Component for Location or Project #1</i> | \$ - | \$ - | \$ - | \$ - |
| <i>Individual Component for Location or Project #1</i> | \$ - | \$ - | \$ - | \$ - |
| <i>Individual Component for Location or Project #1</i> | \$ - | \$ - | \$ - | \$ - |

| | | | | |
|--|-----------------------------|-------------------------------|--------------------------------|--|
| Planning, Design, and Development - Location or Project #2 | \$ - | \$ - | \$ - | \$ - |
| <i>Individual Component for Location or Project #2</i> | \$ - | \$ - | \$ - | \$ - |
| <i>Individual Component for Location or Project #2</i> | \$ - | \$ - | \$ - | \$ - |
| <i>Individual Component for Location or Project #2</i> | \$ - | \$ - | \$ - | \$ - |
| Subtotal Budget for (B) Conducting Planning, Design, and Development Activities | \$ - | \$ - | \$ - | \$ - |
| Itemized Estimated Costs of the (C) Proposed Projects and Strategies | | | | |
| Activities | SS4A Federal Request | SS4A Non-Federal Match | Total SS4A Project Cost | Other Federal Funds (if applicable) |
| Implementation - Location or Project #1 | \$ 555,561.00 | \$ 138,890.00 | \$ 694,451.00 | \$ - |
| <i>Individual Component for Location or Project #1</i> | \$ 555,561.00 | \$ 138,890.00 | \$ 694,451.00 | \$ - |
| <i>Individual Component for Location or Project #1</i> | \$ - | \$ - | \$ - | \$ - |
| <i>Individual Component for Location or Project #1</i> | \$ - | \$ - | \$ - | \$ - |
| Implementation - Location or Project #2 | \$ - | \$ - | \$ - | \$ - |
| <i>Individual Component for Location or Project #2</i> | \$ - | \$ - | \$ - | \$ - |
| <i>Individual Component for Location or Project #2</i> | \$ - | \$ - | \$ - | \$ - |
| <i>Individual Component for Location or Project #2</i> | \$ - | \$ - | \$ - | \$ - |
| Subtotal Budget for (C) Carrying Out Projects and Strategies | \$ 555,561.00 | \$ 138,890.00 | \$ 694,451.00 | \$ - |
| Total Budget for Activities (A), (B), and (C) | \$ 555,561.00 | \$ 138,890.00 | \$ 694,451.00 | \$ - |

| Whole Blood Delivery Staffing Costs | | | |
|---|-------------------|-------------------|-----------------------|
| | Captain #1 | Captain #2 | Total Per Unit |
| Base Hourly Rate | \$ 27.05 | \$ 27.05 | N/A |
| Stipend | \$ 8.17 | \$ 8.17 | N/A |
| Total Hourly Rate | \$ 35.22 | \$ 35.22 | N/A |
| Regular Salary (2080 Hrs) | \$ 95,798.40 | \$ 95,798.40 | \$ 191,596.80 |
| Overtime (50 Hrs) | \$ 2,641.50 | \$ 2,641.50 | \$ 5,283.00 |
| Annual Salary | \$ 98,439.90 | \$ 98,439.90 | \$ 196,879.80 |
| FICA Taxes (0.0765) | \$ 7,530.65 | \$ 7,530.65 | \$ 15,061.30 |
| Workers' Compensation (0.0119) | \$ 1,171.43 | \$ 1,171.43 | \$ 2,342.87 |
| Retirement Contributions (0.3519) | \$ 34,641.00 | \$ 34,641.00 | \$ 69,282.00 |
| Accrued Comp Absences (0.0155) | \$ 1,525.82 | \$ 1,525.82 | \$ 3,051.64 |
| Health Insurance | \$ 22,436.00 | \$ 22,436.00 | \$ 44,872.00 |
| Life Insurance | \$ 663.58 | \$ 663.58 | \$ 1,327.17 |
| Total | \$ 166,408.39 | \$ 166,408.39 | \$ 332,816.78 |
| Whole Blood Vehicle/Equipment Costs | | | |
| Vehicle | #1 | #2 | Cost |
| SUV | \$ 70,000.00 | \$ 70,000.00 | \$ 140,000.00 |
| Equipment | | | Cost |
| Mobile Radio | \$ 4,500.00 | \$ 4,500.00 | \$ 9,000.00 |
| Portable Radio (x2) | \$ 7,000.00 | \$ 7,000.00 | \$ 14,000.00 |
| MDT | \$ 4,800.00 | \$ 4,800.00 | \$ 9,600.00 |
| Tablet, Mobile Printer | \$ 1,500.00 | \$ 1,500.00 | \$ 3,000.00 |
| Cardiac Monitor | \$ 50,000.00 | \$ 50,000.00 | \$ 100,000.00 |
| Portable Blood Refrigeration Unit | \$ 20,000.00 | \$ 20,000.00 | \$ 40,000.00 |
| Blood Warmer | \$ 5,600.00 | \$ 5,600.00 | \$ 11,200.00 |
| Misc. Blood Delivery Equipment | \$ 4,000.00 | \$ 4,000.00 | \$ 8,000.00 |
| Smart Blood Cooler | \$ 5,000.00 | \$ 5,000.00 | \$ 10,000.00 |
| Miscellaneous Medical Equipment | \$ 5,000.00 | \$ 5,000.00 | \$ 10,000.00 |
| Total Equipment | | | \$ 354,800.00 |
| Whole Blood Personnel Onboarding Costs | | | |
| Vehicle | | | Cost |
| Uniforms | \$ 1,200.00 | \$ 1,200.00 | \$ 1,200.00 |
| Orientation | \$ 2,817.60 | \$ 2,817.60 | \$ 5,635.20 |
| Total Equipment | | | \$ 6,835.20 |
| Whole Blood Delivery Resource Total | | | |
| Total Staffing, Equipment, Onboarding | | | \$ 694,451.98 |
| County Cost Share (20%) | | | \$ 138,890.40 |
| Federal Cost Share (80%) | | | \$ 555,561.58 |

BUDGET INFORMATION - Construction Programs

NOTE: Certain Federal assistance programs require additional computations to arrive at the Federal share of project costs eligible for participation. If such is the case, you will be notified.

| COST CLASSIFICATION | a. Total Cost | b. Costs Not Allowable for Participation | c. Total Allowable Costs (Columns a-b) |
|---|--------------------------------------|--|--|
| 1. Administrative and legal expenses | \$ <input type="text" value="0.00"/> | \$ <input type="text" value="0.00"/> | \$ <input type="text" value="0.00"/> |
| 2. Land, structures, rights-of-way, appraisals, etc. | \$ <input type="text" value="0.00"/> | \$ <input type="text" value="0.00"/> | \$ <input type="text" value="0.00"/> |
| 3. Relocation expenses and payments | \$ <input type="text" value="0.00"/> | \$ <input type="text" value="0.00"/> | \$ <input type="text" value="0.00"/> |
| 4. Architectural and engineering fees | \$ <input type="text" value="0.00"/> | \$ <input type="text" value="0.00"/> | \$ <input type="text" value="0.00"/> |
| 5. Other architectural and engineering fees | \$ <input type="text" value="0.00"/> | \$ <input type="text" value="0.00"/> | \$ <input type="text" value="0.00"/> |
| 6. Project inspection fees | \$ <input type="text" value="0.00"/> | \$ <input type="text" value="0.00"/> | \$ <input type="text" value="0.00"/> |
| 7. Site work | \$ <input type="text" value="0.00"/> | \$ <input type="text" value="0.00"/> | \$ <input type="text" value="0.00"/> |
| 8. Demolition and removal | \$ <input type="text" value="0.00"/> | \$ <input type="text" value="0.00"/> | \$ <input type="text" value="0.00"/> |
| 9. Construction | \$ <input type="text" value="0.00"/> | \$ <input type="text" value="0.00"/> | \$ <input type="text" value="0.00"/> |
| 10. Equipment | \$ <input type="text" value="0.00"/> | \$ <input type="text" value="0.00"/> | \$ <input type="text" value="0.00"/> |
| 11. Miscellaneous | \$ <input type="text" value="0.00"/> | \$ <input type="text" value="0.00"/> | \$ <input type="text" value="0.00"/> |
| 12. SUBTOTAL (sum of lines 1-11) | \$ <input type="text" value="0.00"/> | \$ <input type="text" value="0.00"/> | \$ <input type="text" value="0.00"/> |
| 13. Contingencies | \$ <input type="text" value="0.00"/> | \$ <input type="text" value="0.00"/> | \$ <input type="text" value="0.00"/> |
| 14. SUBTOTAL | \$ <input type="text" value="0.00"/> | \$ <input type="text" value="0.00"/> | \$ <input type="text" value="0.00"/> |
| 15. Project (program) income | \$ <input type="text" value="0.00"/> | \$ <input type="text" value="0.00"/> | \$ <input type="text" value="0.00"/> |
| 16. TOTAL PROJECT COSTS (subtract #15 from #14) | \$ <input type="text" value="0.00"/> | \$ <input type="text" value="0.00"/> | \$ <input type="text" value="0.00"/> |
| FEDERAL FUNDING | | | |
| 17. Federal assistance requested, calculate as follows: (Consult Federal agency for Federal percentage share.) Enter eligible costs from line 16c Multiply X <input type="text" value=""/> % Enter the resulting Federal share. | | | \$ <input type="text" value="0"/> |