

A large, stylized logo in the background featuring a yellow sun with white rays and a green leaf with a white vein, both partially overlapping a white circle. Below the sun is a blue wavy line.

# PP-22-10-24 (Quasi-Judicial)

(Adoption Hearing BCC Land Use Meeting 03-28-2023)

Babcock Property Holdings, L.L.C.



CHARLOTTE COUNTY  
FLORIDA

# PP-22-10-24

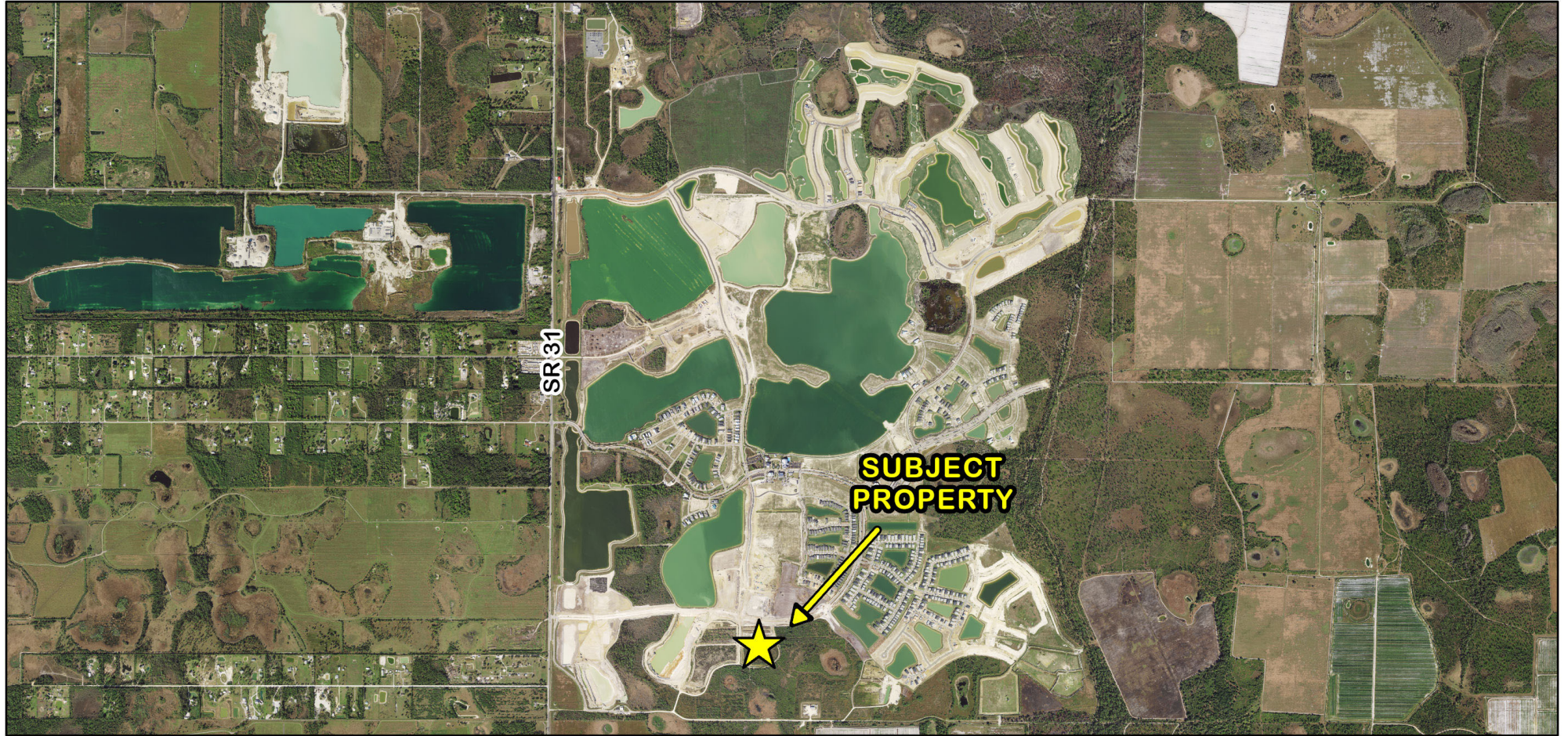
- Babcock Property Holdings, L.L.C. is requesting Preliminary Plat approval for a subdivision to be named, Curry Preserve Commercial at Babcock Ranch, being a replat of part of Tract E-35 and Tract I-73, and a partial replat of Tract E-36 of Babcock Ranch Community Spine Road EE5 & GG5, as recorded in Plat Book 26, Page 2-A through 2-I. The subdivision is to consist of seven tracts for commercial development, roadway, drainage, and open space. The site contains 31.69± acres and is generally located north of the County line with Lee County, south of Cypress Parkway, west of Muhly Grass Road, and east of SR 31, in the boundary of the Babcock Ranch Community Development of Regional Impact (DRI) Increment 1, and within the East County area.
- Located in Commission District I



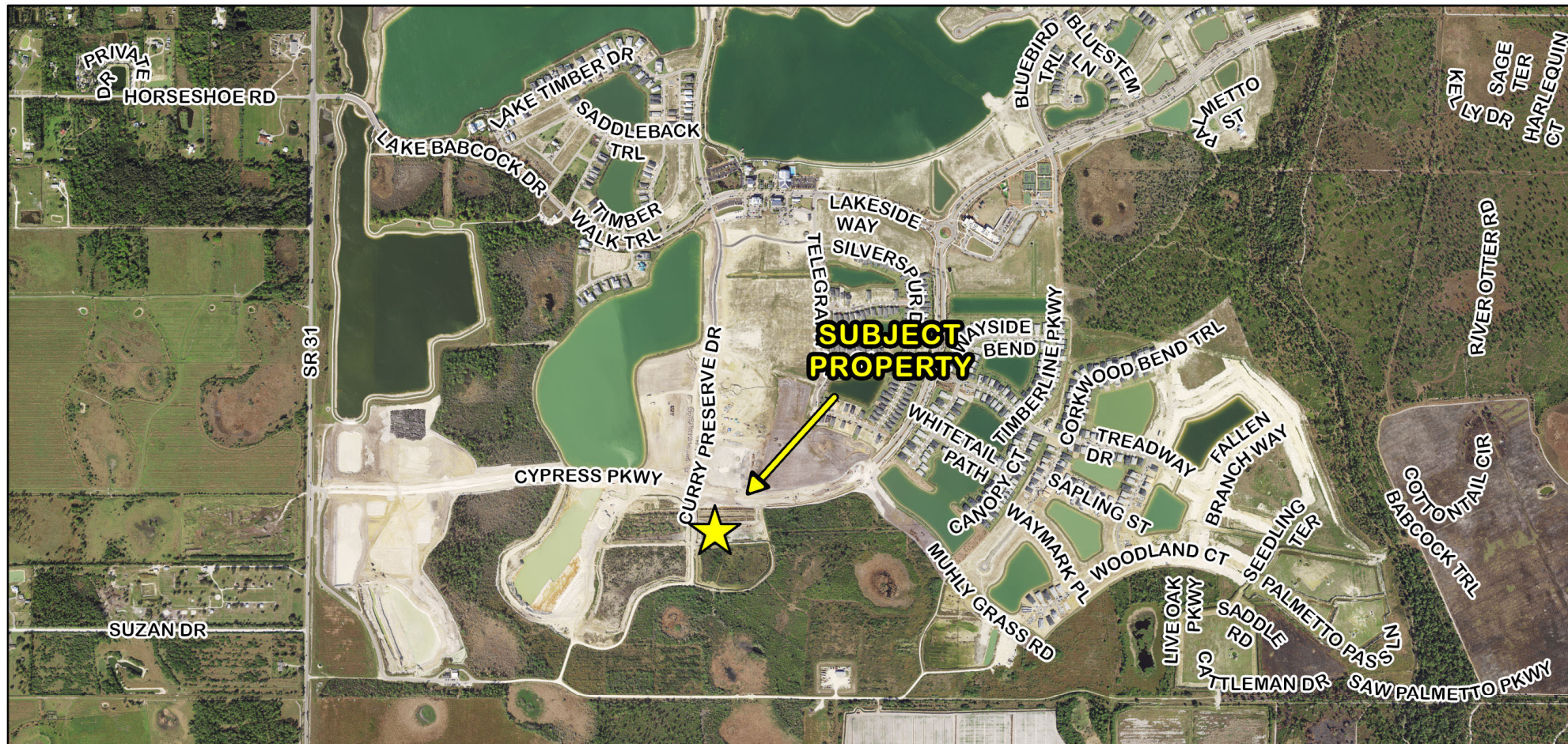


**PP-22-10-24    Location Map**

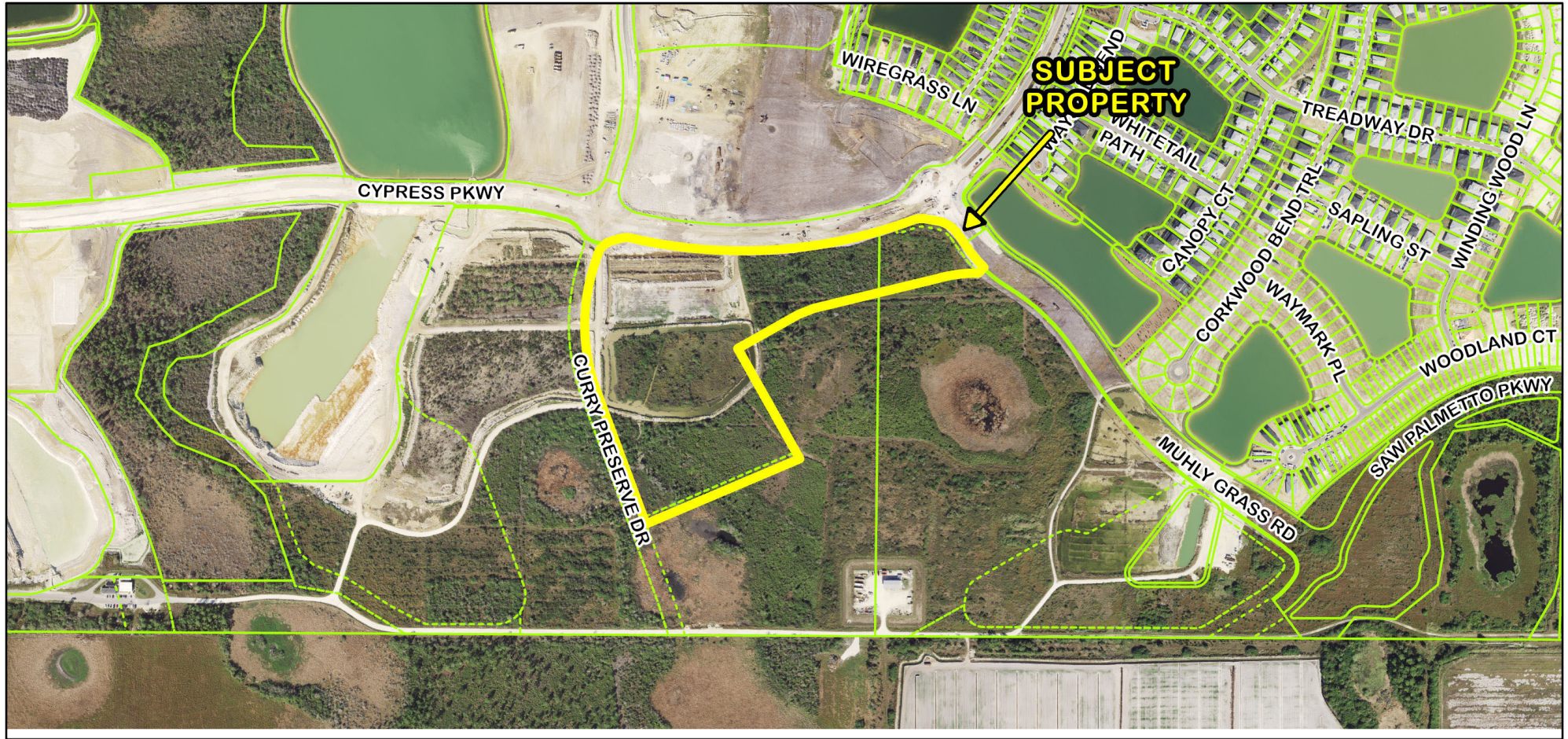






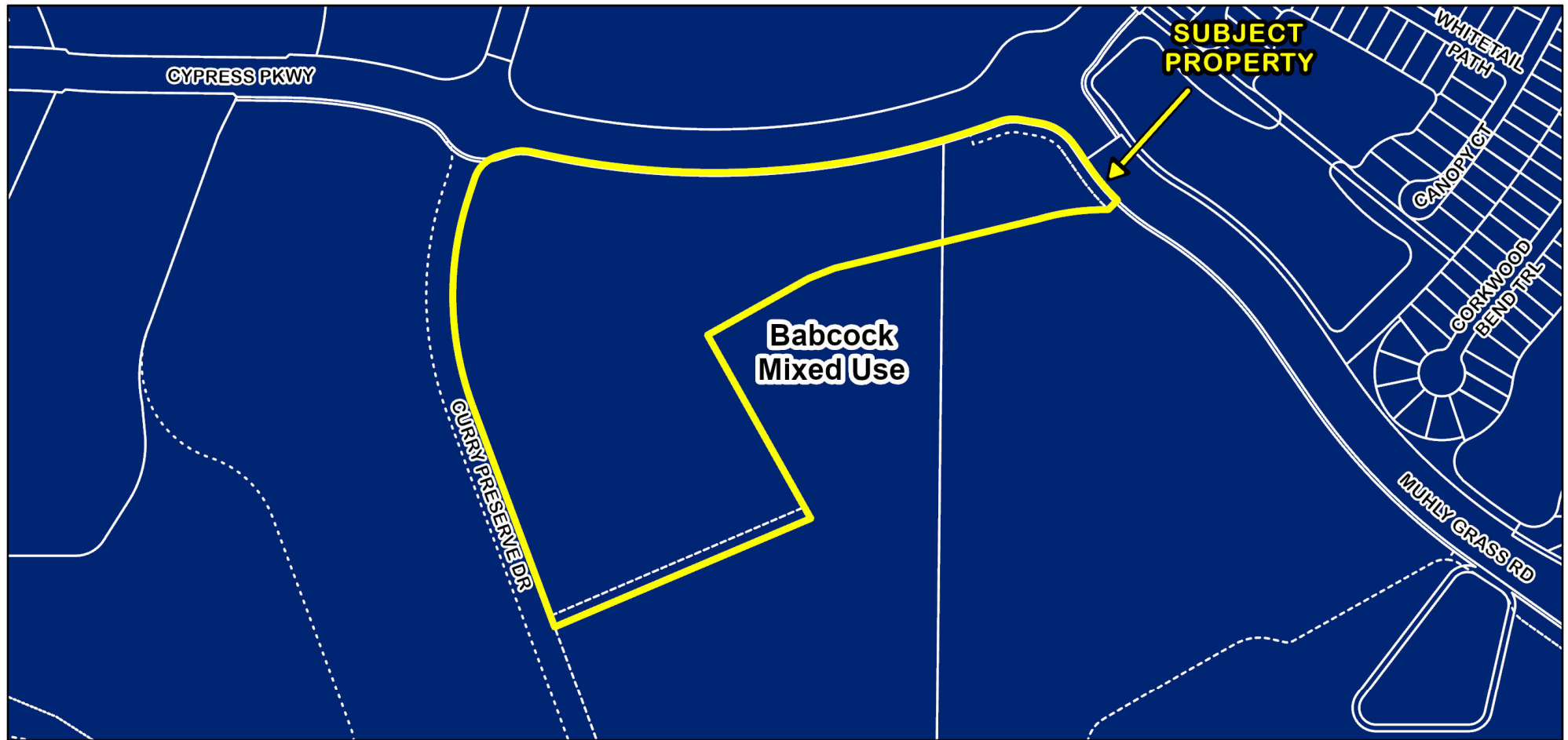




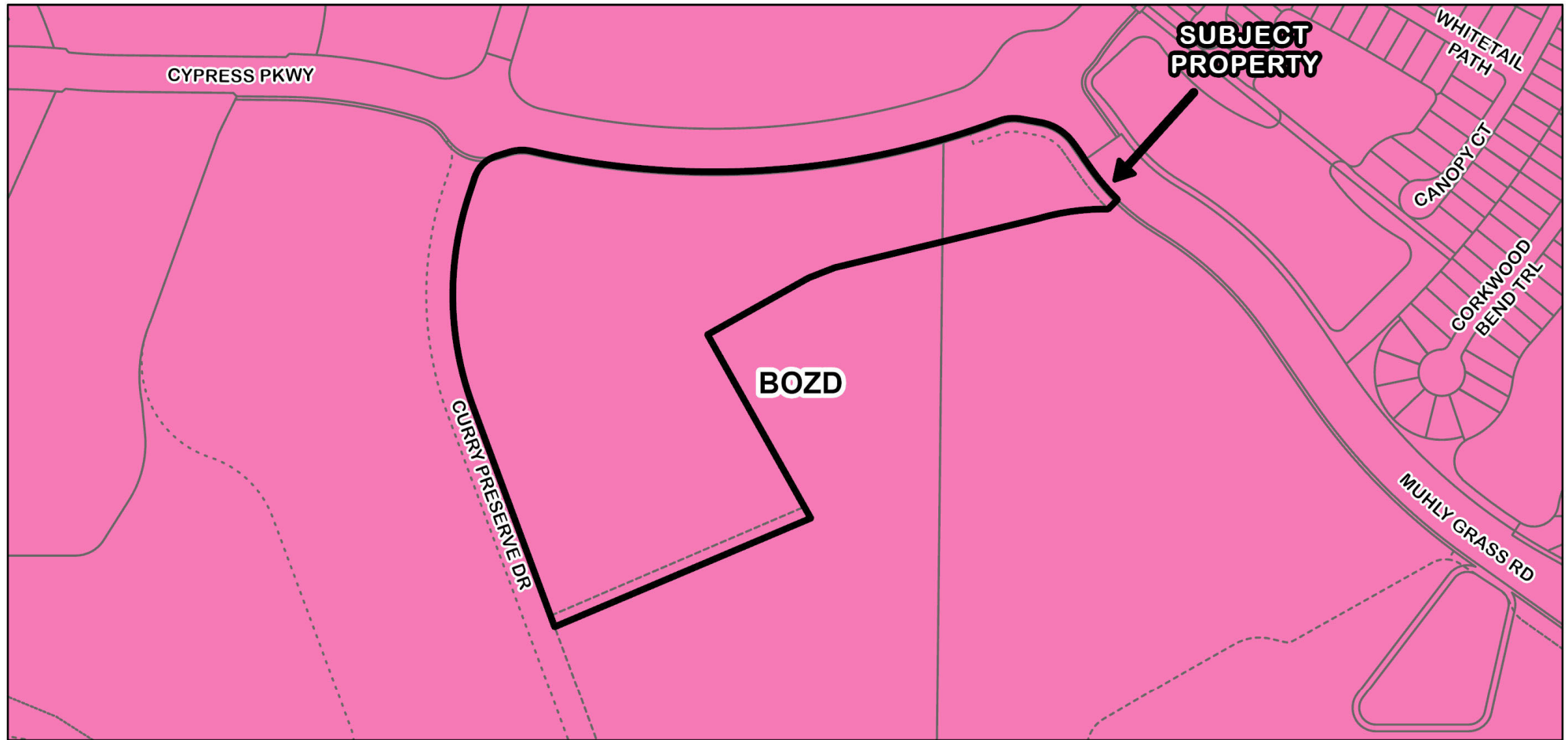












## PP-22-10-24 Zoning Designations

