

CHARLOTTE COUNTY

Location Map for PP-22-10-24



31/42/26 East County



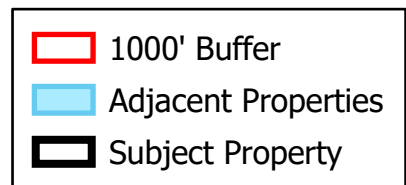
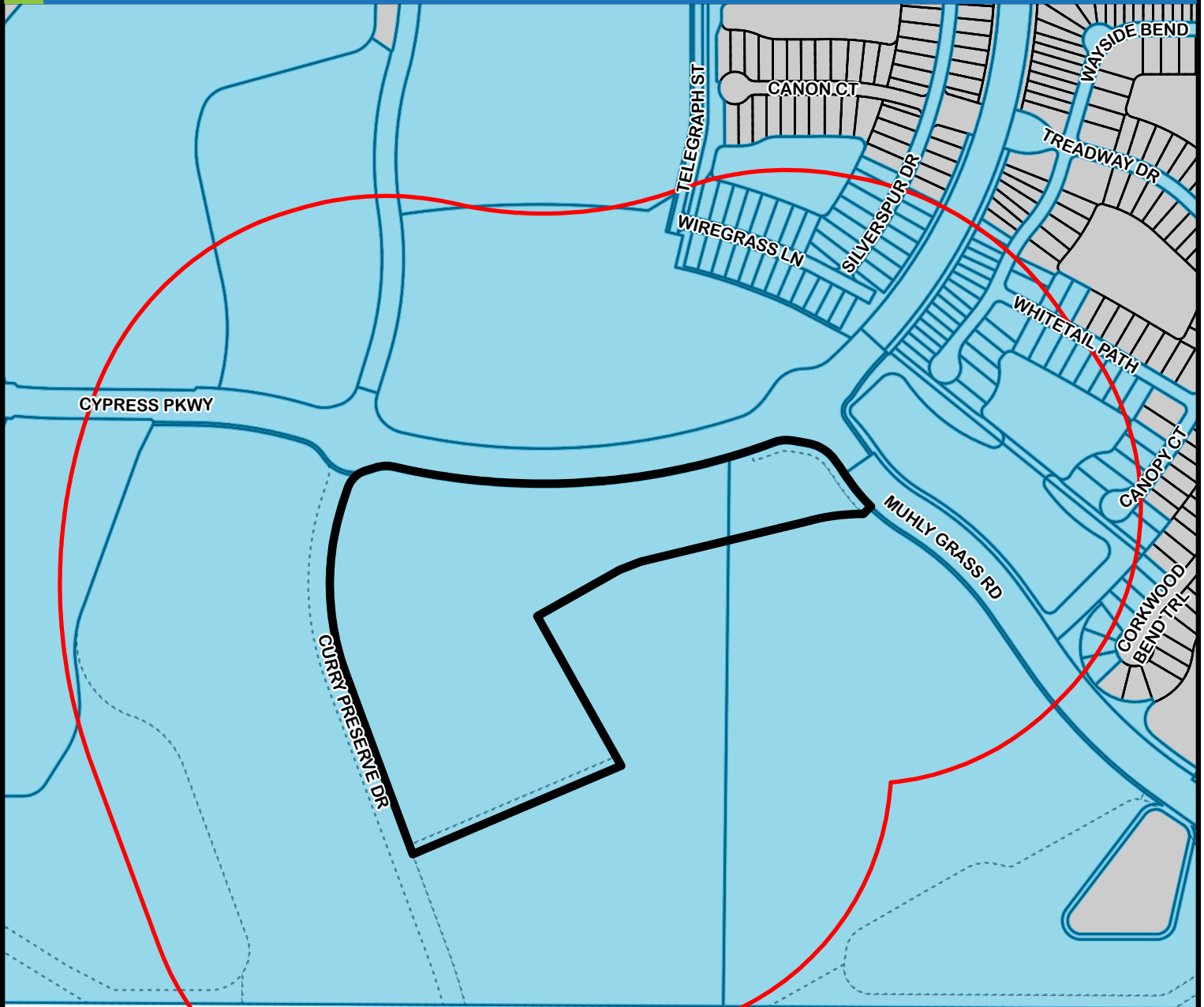
This map is a representation of compiled public information. It is believed to be an accurate and true depiction for the stated purpose, but Charlotte County and its employees make no guarantees, implied or otherwise, to the accuracy, or completeness. We therefore do not accept any responsibilities as to its use. This is not a survey or is it to be used for design. Reflected Dimensions are for informational purposes only and may have been rounded to the nearest tenth. For precise dimensions, please refer to recorded plats and related documents.

© Copyright 2022 Port Charlotte, FL by Charlotte County
Date Saved: 11/30/2022 12:39 PM By: Vance-4369

M:\Departments\LIS\Projects\Petition_Maps\Land_Development\2022\PrePlat\PP-22-10-24\PP-22-10-24template.aprx

CHARLOTTE COUNTY

1000' buffer for PP-22-10-24

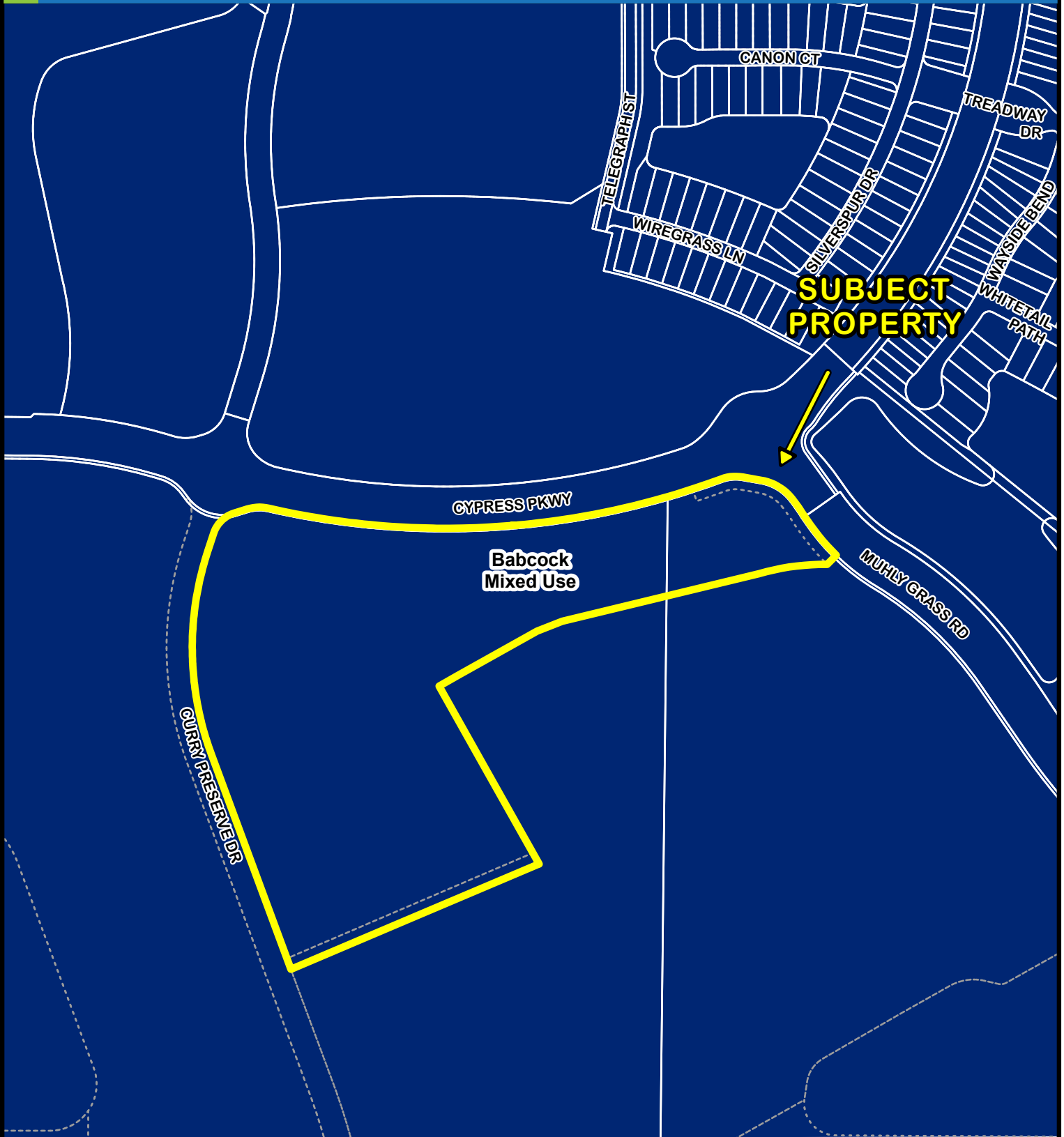


31/42/26 East County



CHARLOTTE COUNTY

FLUM Designations for PP-22-10-24



31/42/26 East County



This map is a representation of compiled public information. It is believed to be an accurate and true depiction for the stated purpose, but Charlotte County and its employees make no guarantees, implied or otherwise, to the accuracy or completeness. We therefore do not accept any responsibilities as to its use. This is not a survey or is it to be used for design. Reflected Dimensions are for informational purposes only and may have been rounded to the nearest tenth. For precise dimensions, please refer to recorded plats and related documents.

© Copyright 2022 Port Charlotte, FL by Charlotte County
Date Saved: 11/30/2022 12:19 PM By: Vance-4369

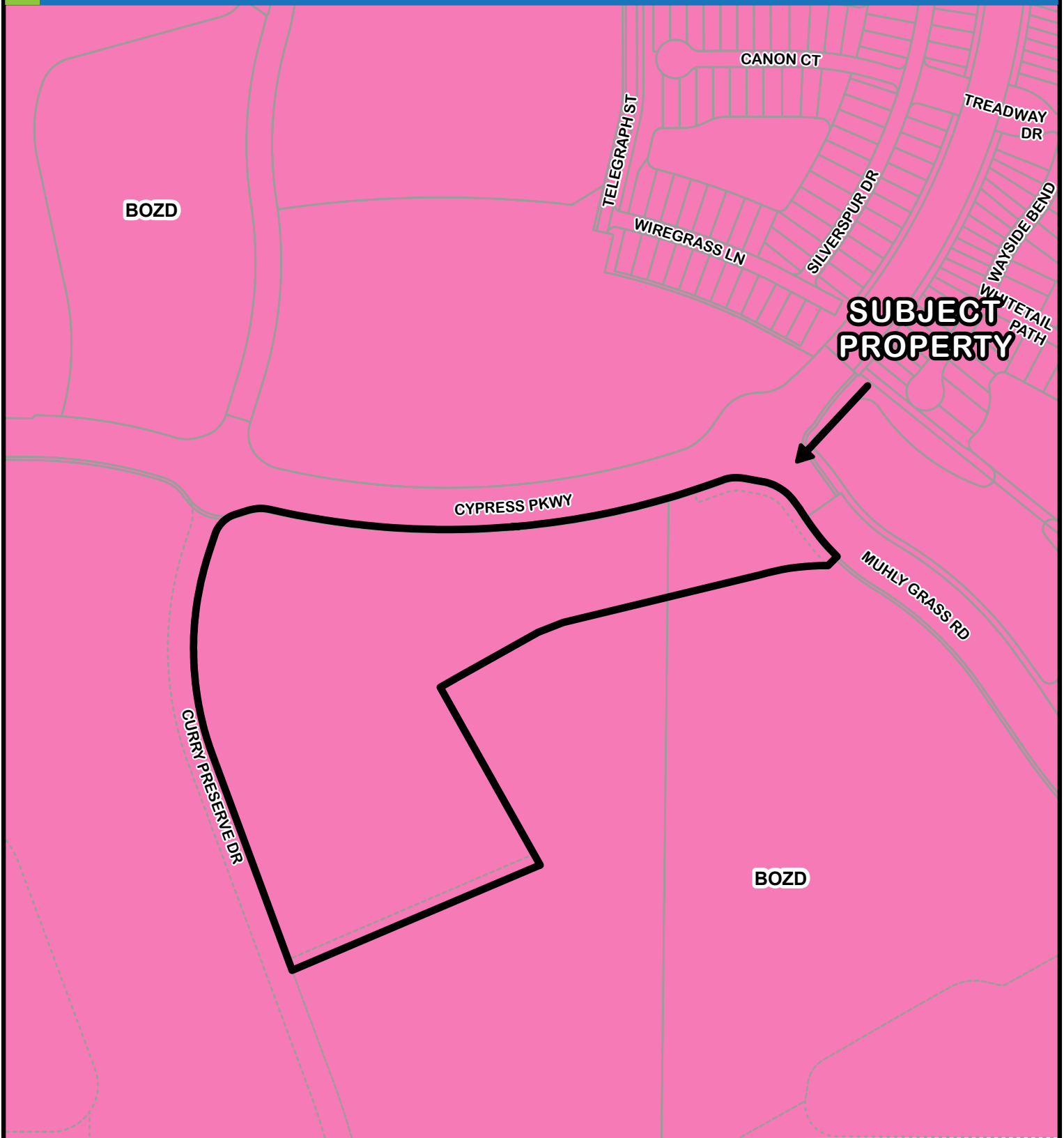
M:\Departments\LIS\Projects\Petition_Maps\Land_Development\2022\PrePlat\PP-22-10-24\PP-22-10-24template.aprx

CHARLOTTE COUNTY

Zoning Designations for PP-22-10-24



CHARLOTTE COUNTY
Community Development



31/42/26 East County



(NOT TO SCALE)

This map is a representation of compiled public information. It is believed to be an accurate and true depiction for the stated purpose, but Charlotte County and its employees make no guarantees, implied or otherwise, to the accuracy, or completeness. We therefore do not accept any responsibilities as to its use. This is not a survey or is it to be used for design. Reflected Dimensions are for informational purposes only and may have been rounded to the nearest tenth. For precise dimensions, please refer to recorded plats and related documents.

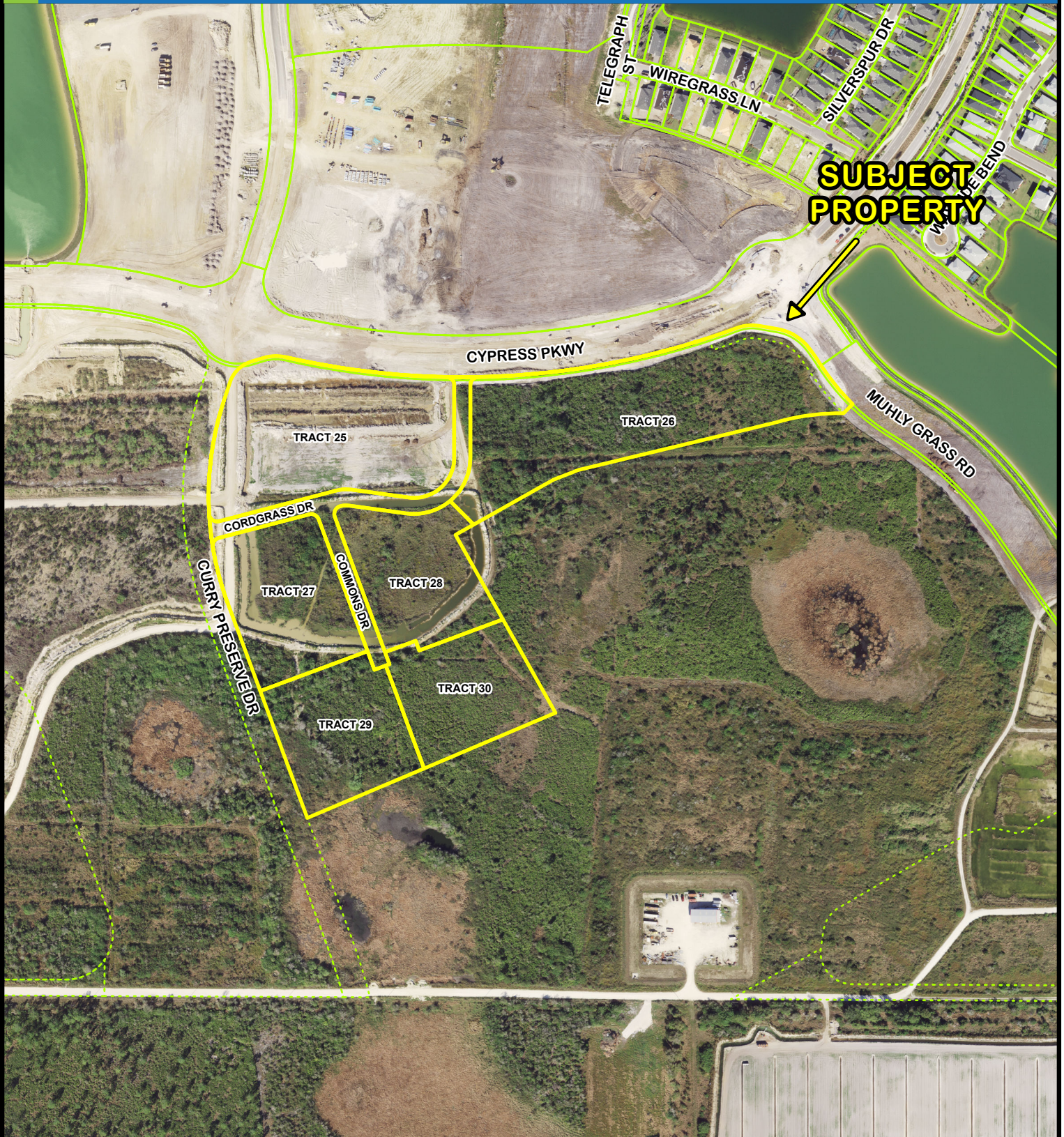
© Copyright 2022 Port Charlotte, FL by Charlotte County

Date Saved: 11/30/2022 12:14 PM By: Vance-4369

M:\Departments\LIS\Projects\Petition_Maps\Land_Development\2022\PrePlat\PP-22-10-24\PP-22-10-24template.aprx

CHARLOTTE COUNTY

Proposed Changes for PP-22-10-24



31/42/26 East County



This map is a representation of compiled public information. It is believed to be an accurate and true depiction for the stated purpose, but Charlotte County and its employees make no guarantees, implied or otherwise, to the accuracy, or completeness. We therefore do not accept any responsibilities as to its use. This is not a survey or is it to be used for design. Reflected Dimensions are for informational purposes only and may have been rounded to the nearest tenth. For precise dimensions, please refer to recorded plats and related documents.

© Copyright 2022 Port Charlotte, FL by Charlotte County
Date Saved: 12/1/2022 1:47 PM By: Vance-4300

M:\Departments\GIS\Projects\Petition_Maps\Land_Development\2022\PrePlat\PP-22-10-24\PP-22-10-24template.aprx