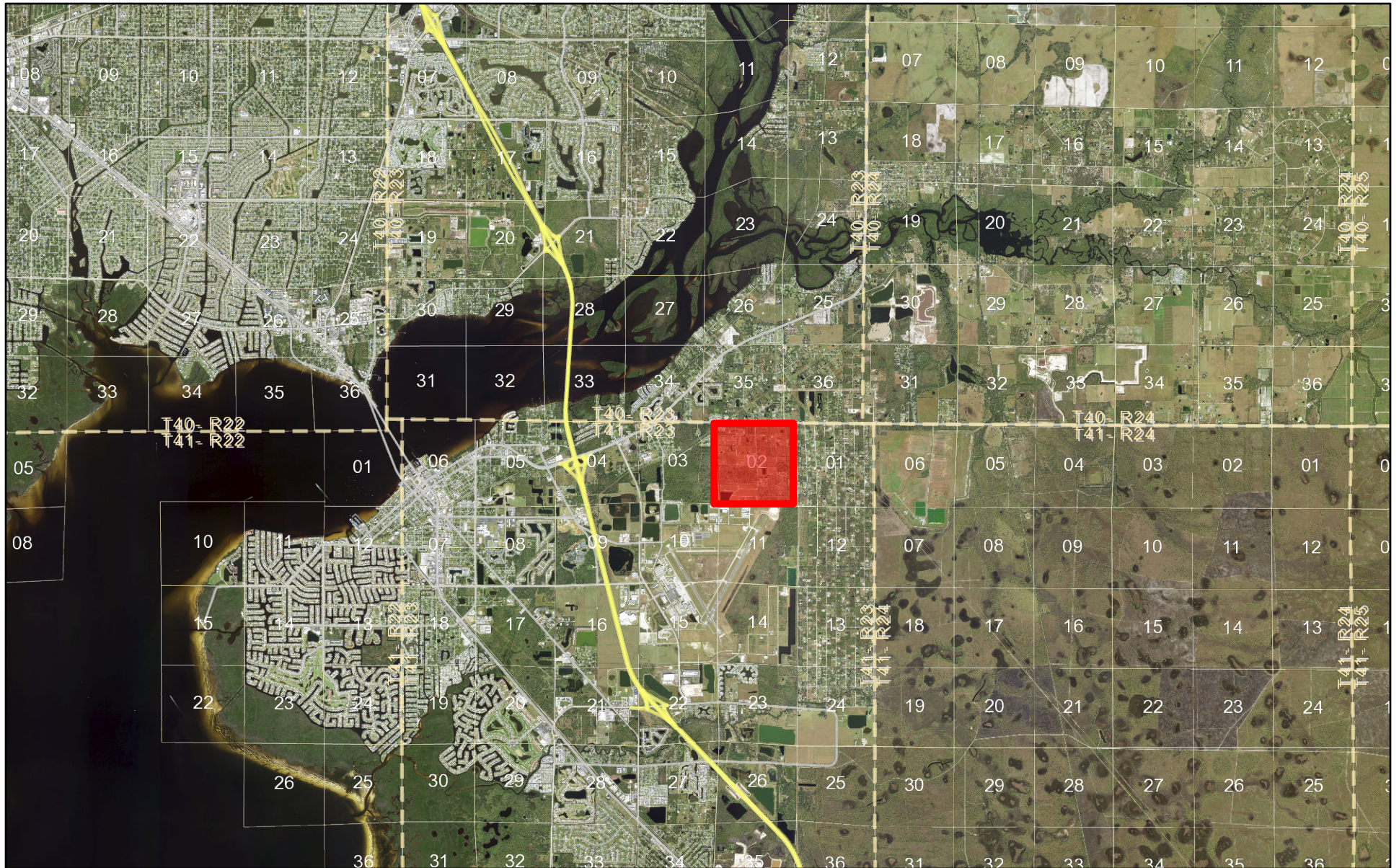
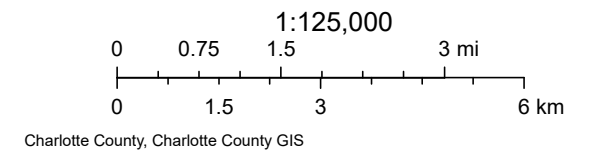


Area of Easements in Official Records Book 162, Page 210



January 31, 2024



This aerial map displays a large land parcel outlined in red, located in T40-R23-Sec 02. The parcel is situated between Bermont Rd to the north and Pelican Dr to the south. A blue line within the red-outlined parcel indicates a specific feature, possibly a road or boundary. Surrounding land parcels are labeled with their T-R-S coordinates, and various roads and features are visible across the map.

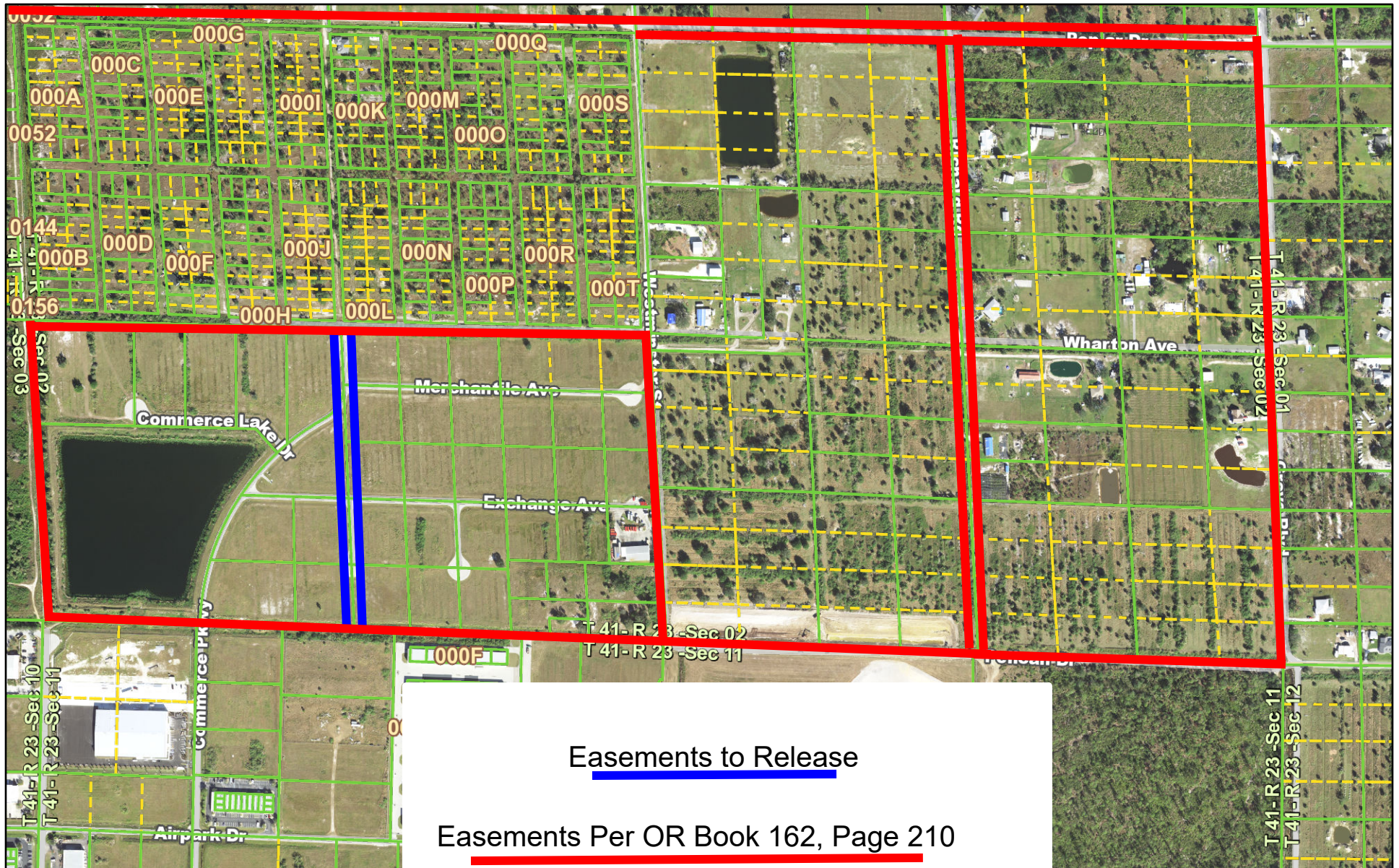
1:16,000

0 0.1 0.2 0.4 mi

0 0.17 0.35 0.7 km

Charlotte County GIS

Aerial Showing Easements to Release



January 31, 2024

