

A stylized graphic featuring a yellow sun with rays, a green leaf, and a light blue wave-like shape, all overlapping and positioned behind the main text.

Englewood Beach update

March 11, 2025



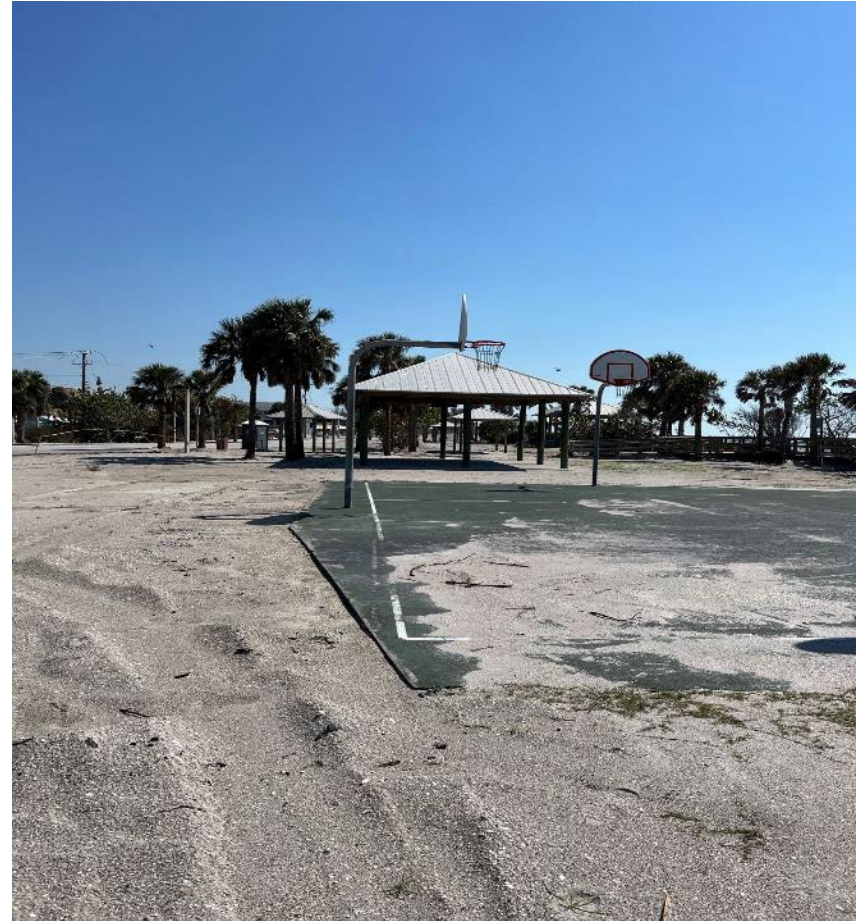
CHARLOTTE COUNTY
FLORIDA













Option 1: South end partial reopen

- Funding
 - County
 - Insurance - property in the open (PITO)
 - No FEMA reimbursement

- Cost/Time
 - Moving of fence – to close off parking area to damaged boardwalk
 - Cost – estimated \$6k-\$7k
 - Time – estimated 2-4 weeks based on vendor schedule
 - Parking bumpers – in the area that is opened
 - Cost – estimated \$2k
 - Time – estimated 1 day
 - Partial environmental fencing – along dune line, to where damaged boardwalk begins
 - Cost– estimated \$6k-\$8k
 - Time – estimated 2-3 weeks based on vendor schedule

Option 1: South end partial reopen

- Partial environmental fencing wind screening
 - Cost – estimated \$1k
 - Time – estimated 2 days after fence completion
- Port-a-lets
 - Cost – estimated \$4k monthly
 - Time – estimated 1 to 2 days
- Stormwater
 - Public Works is working with Ashbritt to perform this work
- Signage
 - Cost – estimated \$1k
 - Ongoing “Area Closed” signage cost – estimated \$4k/month
 - Time – estimated 2 week lead time for fabrication and installation
 - Ongoing “Area Closed” signage replacement – staff will assess and replace missing vandalizes signage 2 times per week

Option 1: South end partial reopen

- Site lighting
 - There will be no lighting due to damage, hours of operation might be impacted
 - Facilities Work Order for electrician to cap off current lighting junction boxes
- **Recap**
 - County costs estimates: \$10k + \$4k/month for port-a-let + \$4k/month for signage
 - Insurance (PITO) costs estimates: \$9k
 - Timeline estimates: estimated 4 weeks
 - (depending on vendors availability to start)

Option 1: South end partial reopen



This portion of Englewood Beach remain closed until the boardwalk is completely removed

Move the fence to allow access to southern entrance and parking area

This will allow for approximate capacity of 20-25 cars and public access to the beach

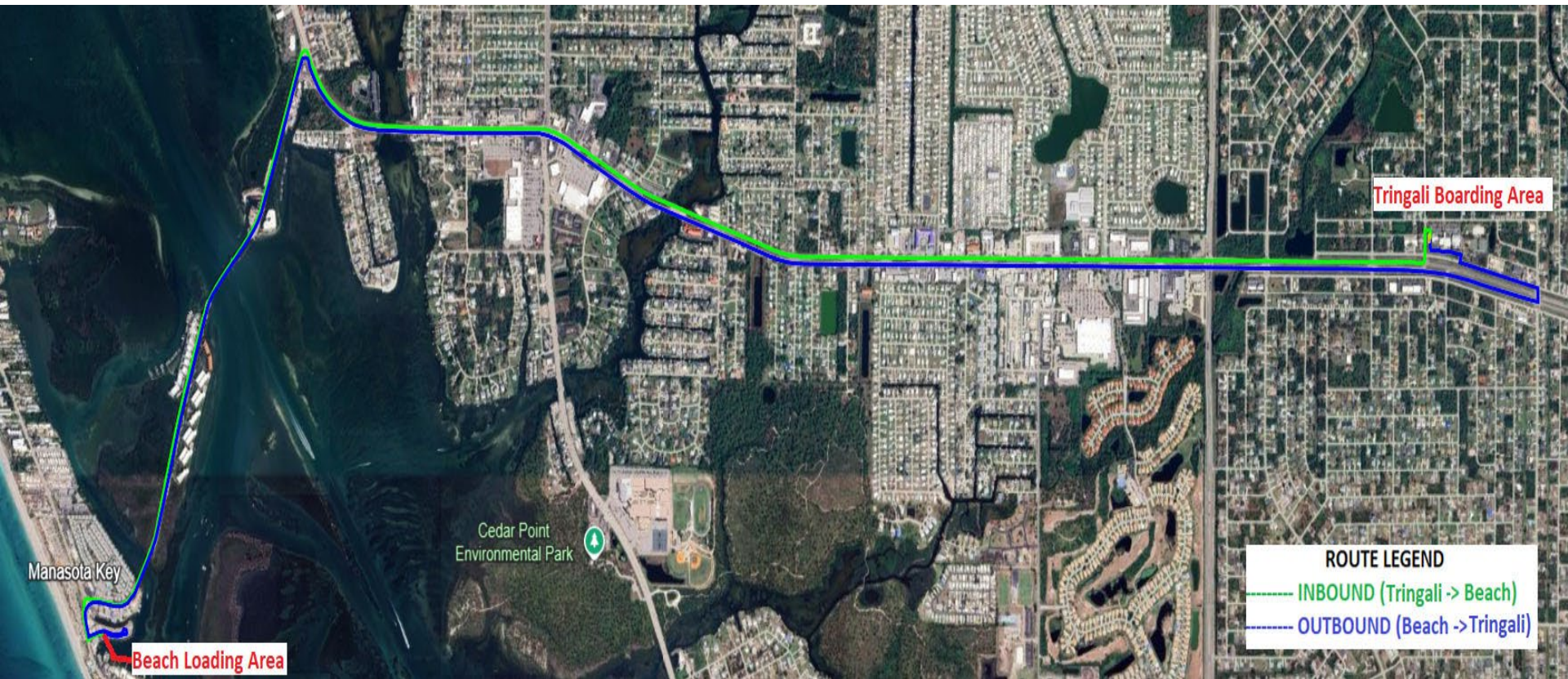
Chadwick Park remains open, and has approximate capacity for 50 cars to park



Englewood Beach Park-n-Ride Circulator

- We have met with Transit and have developed a pilot Park-n-Ride circulator to Englewood Beach
 - This is done in an effort to aid the limited access parking available during option 1
- Program details
 - Pick up/Drop off points
 - Tringali Park (near Community Center)
 - Chadwick Park (near maintenance yard)
 - Transit would operate an ADA accessible 12 or 14 passenger bus
 - Operating hours would be from 10a to 4p Monday thru Saturday
 - Top of the hour at Tringali Park, bottom of the hour from Chadwick Park (approx.)

Circulator route



Pick up/Drop off locations



Pick up/Drop off locations



Option 2: Full reopening

■ Funding

- County advance funding
 - Bid with FEMA language to enhance our ability recover funding
- Insurance - property in the open (PITO)

■ Cost/Time

- Removing of fence - remove fence from park
 - Cost – estimates \$25k-30k
 - Time – estimate 90 days to bid, 30 days to start work, 10 days to do work
- Parking bumpers –
 - Cost – estimated \$15k-\$20k
 - Time – estimated 2 weeks
- Full environmental fencing – along dune line
 - Cost – estimated \$15k-\$20k
 - Time – estimate 90 days to bid, 30 days to start work, 10 days to do work

Option 2: Full reopening

- Partial environmental fencing wind screening
 - Cost – estimated \$2k-\$3k
 - Time – estimated 5 days after fence completion
- Remove boardwalk – demo and remove all damaged boardwalk sections
 - Cost – estimate \$90k-\$110k
 - Time – estimate 90 days to bid, 30 days to start work, 30 days to do work
- Port-a-lets
 - Cost – estimated \$4k/per month
 - Time – estimated 24-48 hours after requested
- Stormwater
 - Public Works is working with Ashbritt to perform this work
- Signage -
 - Cost – estimated \$3k
 - Time – estimated 2-3 week lead time for fabrication and installation

Option 2: Full reopening

- Site work – new sidewalks and curbing
 - Cost – estimated \$60k-\$75k
 - Time – estimate 90 days to bid, 30 days to start work, 30-45 days to do work
- Resurface asphalt drive lane
 - Cost – estimated \$75k-\$85k
 - Time – estimate 90 days to bid, 30 days to start work, 15-20 days to do work
- Site lighting
 - There will be no lighting due to damage, hours of operation might be impacted

- **Recap**

- County costs estimates: \$323k + \$4k/month for port-a-let
- Insurance (PITO) costs estimates: \$23k
- Timeline estimates: 90 days to bid, 30 days to mobilize, 30-60 days to do work
(180 days – estimated, depending on vendors ability to start)

Playground remain closed

All boardwalks to be removed

Environmental fence to be installed

Restroom remain closed, port-a-lets to be provided

Basketball court open

Fence along roadway to be removed



Questions

