

DRAFT

ORDINANCE NUMBER 2025 -

1
2
3
4
5 AN ORDINANCE OF THE BOARD OF COUNTY
6 COMMISSIONERS OF CHARLOTTE COUNTY, FLORIDA,
7 PURSUANT TO SECTION 163.3184, FLORIDA STATUTES,
8 AMENDING THE COUNTY'S COMPREHENSIVE PLAN BY:
9 (1) AMENDING CHARLOTTE COUNTY FLUM SERIES MAP
10 #1: 2030 FUTURE LAND USE FROM COMPACT GROWTH
11 MIXED USE (CGMU) (1,081.75± ACRES) AND
12 PRESERVATION (PR) (92.39± ACRES) TO CGMU (1,010.69±
13 ACRES) AND PR (163.45± ACRES) IN ORDER TO ALLOW
14 FOR A MIXTURE OF RESIDENTIAL USES UP TO 3,475
15 UNITS (A REDUCTION OF 485 UNITS), COMMERCIAL, AND
16 LIGHT INDUSTRIAL USES UP TO 1,400,000 SQUARE FEET
17 (A REDUCTION OF 109,807 SQUARE FEET); INCREASING
18 THE BASE DENSITY FROM 1,631 UNITS SUBJECT TO THE
19 COMPREHENSIVE PLAN; (2) AMENDING CHARLOTTE
20 COUNTY FLUM SERIES MAP #2: 2050 FRAMEWORK,
21 FROM AGRICULTURAL/RURAL TO EMERGING
22 NEIGHBORHOOD FOR 28.01± ACRES OF PROPERTIES
23 AND 99.13± ACRES OF PROPERTIES FROM EMERGING
24 NEIGHBORHOOD TO AGRICULTURAL/RURAL; AND
25 (3) AMENDING CHARLOTTE COUNTY FLUM SERIES MAP
26 #3: 2030 SERVICE AREA DELINEATION, TO EXTEND THE
27 URBAN SERVICE AREA BOUNDARY TO INCLUDE 28.01±
28 ACRES OF PROPERTIES AND TO CONCURRENTLY
29 REMOVE 99.13± ACRES OF PROPERTIES FROM THE
30 URBAN SERVICE AREA; FOR PROPERTIES GENERALLY
31 LOCATED SOUTHEAST OF MCCALL ROAD (SR 776) AND
32 SOUTHWEST OF THE MYAKKA RIVER, IN THE WEST
33 COUNTY AREA, CONTAINING 1,174.14± ACRES;
34 COMMISSION DISTRICT IV; PETITION PAL-24-04;
35 APPLICANT: MARONDA HOMES, LLC OF FLORIDA;
36 PROVIDING AN EFFECTIVE DATE; AND PROVIDING FOR
37 TRANSMITTAL OF ADOPTED ORDINANCE.
38
39

RECITALS

40
41 WHEREAS, applicant, Maronda Homes, LLC of Florida ("Applicant"), filed
42
43 Petition PAL-24-04, seeking a large scale plan amendment to the County's Comprehensive
44 Plan by: (1) amending Charlotte County FLUM Series Map #1: 2030 Future Land Use from

45 Compact Growth Mixed Use (CGMU) (1,081.75± acres) and Preservation (PR) (92.39±
46 acres) to CGMU (1,010.69± acres) and PR (163.45± acres) in order to allow for a mixture of
47 residential uses no greater than 3,475 units (a reduction of 485 units), commercial, and
48 light industrial uses up to 1,400,000 square feet (a reduction of 109,807 square feet);
49 establishing the base density as 1,631 units subject always to the relevant Comprehensive
50 Plan provisions; restricting development on Area A as identified under Section 1 of FLU
51 Appendix VII: Compact Growth Mixed Use Master Development Plan to low impact
52 recreational uses/passive recreational uses; (2) amending Charlotte County FLUM Series
53 Map #2: 2050 Framework, from Agricultural/Rural to Emerging Neighborhood for 28.01±
54 acres of properties and 99.13± acres of properties from Emerging Neighborhood to
55 Agricultural/Rural; and (3) amending Charlotte County FLUM Series Map #3: 2030 Service
56 Area Delineation, to extend the Urban Service Area boundary to add 28.01± acres and to
57 concurrently remove 99.13± acres from the Urban Service Area; for properties generally
58 located southeast of McCall Road (SR 776) and southwest of the Myakka River, in the
59 West County area, containing 1,174.14± acres, in Commission District IV, more particularly
60 described in attached Exhibit "A" ("Property"), which Property is owned by multiple owners
61 as provided in attached Exhibit "B"; and

62 WHEREAS, on February 10, 2025, Petition PAL-24-04 was heard before the
63 Charlotte County Planning and Zoning Board ("P&Z Board") and, based on the findings and
64 analysis provided by County Staff and the evidence presented to the P&Z Board, Petition
65 PAL-24-04 was found to be consistent with the County's Comprehensive Plan; the P&Z
66 Board recommended approval for transmittal of Petition PAL-24-04 to the Florida
67 Department of Commerce and other state agencies for review; and

68 WHEREAS, in a public hearing held on Tuesday, March 25, 2025, the Board
69 of County Commissioners of Charlotte County, Florida ("Board") reviewed plan amendment
70 Petition PAL-24-04 and, based on the findings and analysis provided by County Staff
71 regarding the amendment and the evidence presented to the Board, approved transmittal
72 of Petition PAL-24-04 to the Florida Department of Commerce and other state agencies for
73 review and comment; and

74 WHEREAS, Petition PAL-24-04 was transmitted to the Florida Department of
75 Commerce and other state agencies for review and comment; and

76 WHEREAS, the comments received by the reviewing agencies, if any, have
77 been considered and addressed by the Applicant and incorporated into the findings and
78 analysis provided by County Staff; and

79 WHEREAS, after due consideration regarding Petition PAL-24-04 in a public
80 hearing held on _____, 2025, and based on the findings and analysis
81 presented to the Board, the Board finds that the proposed amendment is consistent with
82 the County's Comprehensive Plan, and that the requirements of Chapter 163, Florida
83 Statutes, as they relate to the Petition have been met, and that it is in the best interests of
84 the County and its citizens to approve Petition PAL-24-04.

85 NOW, THEREFORE, BE IT ORDAINED by the Board of County
86 Commissioners of Charlotte County, Florida:

87 Section 1. Approval. Petition PAL-24-04 requesting a large scale plan
88 amendment to the County's Comprehensive Plan by: (1) amending Charlotte County FLUM
89 Series Map #1: 2030 Future Land Use from Compact Growth Mixed Use (CGMU)
90 (1,081.75± acres) and Preservation (PR) (92.39± acres) to CGMU (1,010.69± acres) and

91 PR (163.45± acres) in order to allow for a mixture of residential uses no greater than 3,475
92 units (a reduction of 485 units), commercial, and light industrial uses up to 1,400,000
93 square feet (a reduction of 109,807 square feet); establishing the base density as 1,631
94 units subject always to the relevant Comprehensive Plan provisions; (2) amending
95 Charlotte County FLUM Series Map #2: 2050 Framework, from Agricultural/Rural to
96 Emerging Neighborhood for 28.01± acres of properties and 99.13± acres of properties from
97 Emerging Neighborhood to Agricultural/Rural; and (3) amending Charlotte County FLUM
98 Series Map #3: 2030 Service Area Delineation, to extend the Urban Service Area boundary
99 to add 28.01± acres of properties and to concurrently remove 99.13± acres of properties
100 from the Urban Service Area; for properties generally located southeast of McCall Road
101 (SR 776) and southwest of the Myakka River, in the West County area, containing
102 1,174.14± acres, in Commission District IV, more particularly described in attached Exhibit
103 "A", is hereby approved.

104 Section 2. Effective date. The effective date of this plan amendment, if the
105 amendment is not timely challenged, shall be 31 days after the state land planning agency
106 notifies the local government that the plan amendment package is complete. If timely
107 challenged, this amendment shall become effective on the date the state land planning
108 agency or the Administration Commission enters a final order determining this adopted
109 amendment to be in compliance. No development orders, development permits, or land
110 uses dependent on this amendment may be issued or commence before its effective date.
111 If a final order of noncompliance is issued by the Administration Commission, this
112 amendment may nevertheless be made effective by adoption of a resolution affirming its
113 effective status, a copy of which resolution shall be sent to the state land planning agency.

114 Section 3. Transmittal. County Staff is hereby directed to forward a copy of
115 this Ordinance and its attachments to the Florida Department of Commerce, 107 East
116 Madison Street, Tallahassee, FL 32399-4120, and to the Executive Director, Southwest
117 Florida Regional Planning Council, 1400 Colonial Boulevard, Suite 1, Fort Myers, FL
118 33907.

119

120

121

122

123

124

125

126 [SIGNATURE PAGE FOLLOWS]

127

128

129

130

131

132

133

134

135

136

137
138
139
140
141
142
143
144
145
146
147
148
149
150
151
152
153
154
155
156
157
158
159
160
161
162
163
164
165
166
167
168
169
170
171
172
173
174
175
176
177
178
179
180
181
182
183
184
185
186
187

PASSED AND DULY ADOPTED this ____ day of _____, 2025.

BOARD OF COUNTY COMMISSIONERS
OF CHARLOTTE COUNTY, FLORIDA

DRAFT

By: _____
Joseph M. Tiseo, Chairman

ATTEST:
Roger D. Eaton, Clerk of the Circuit Court
and Ex-Officio Clerk of the
Board of County Commissioners

DRAFT

By: _____
Deputy Clerk

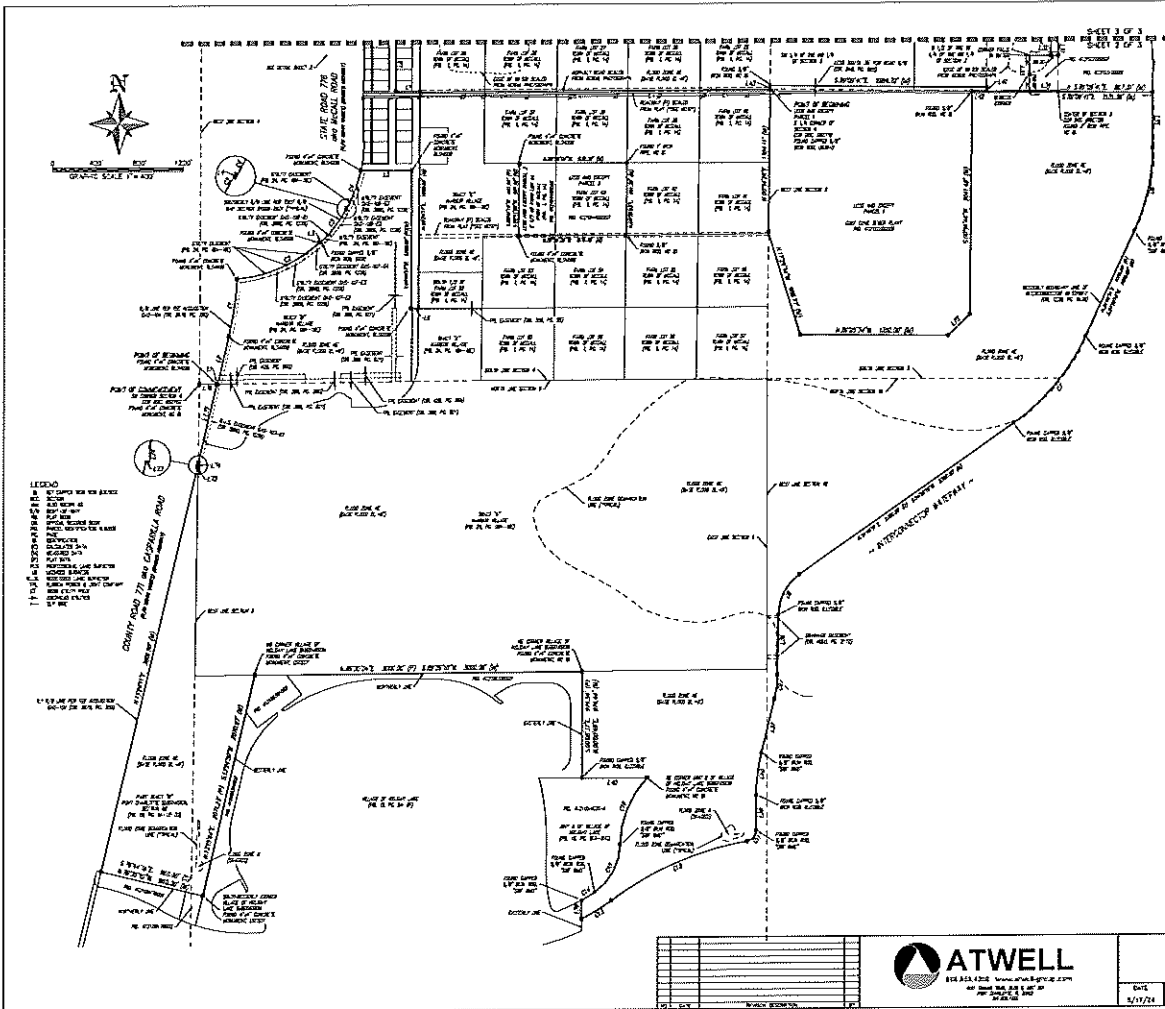
APPROVED AS TO FORM
AND LEGAL SUFFICIENCY:

DRAFT

By: _____
Janette S. Knowlton, County Attorney
LR2024-0558

SURVEY PLAT

OF A PARCEL OF LAND LONG IN
SECTIONS 11, 12, 13, TOWNSHIP 40 NORTH, RANGE 21 EAST,
SECTIONS 1, 4, 8, 9 AND 10, TOWNSHIP 41 SOUTH, RANGE 21 EAST,
CHARLOTTE COUNTY, FLORIDA



NOTES:
 1. THIS SURVEY IS A RECONSTRUCTION OF AN OLD SURVEY AND DOES NOT REPRESENT THE ORIGINAL SURVEY.
 2. THE SURVEYOR HAS REVIEWED THE RECORDS OF THE COUNTY CLERK AND HAS FOUND NO RECORDS OF ANY OTHER SURVEYS OF THIS PARCEL.
 3. THE SURVEYOR HAS REVIEWED THE RECORDS OF THE COUNTY CLERK AND HAS FOUND NO RECORDS OF ANY OTHER SURVEYS OF THIS PARCEL.
 4. THE SURVEYOR HAS REVIEWED THE RECORDS OF THE COUNTY CLERK AND HAS FOUND NO RECORDS OF ANY OTHER SURVEYS OF THIS PARCEL.
 5. THE SURVEYOR HAS REVIEWED THE RECORDS OF THE COUNTY CLERK AND HAS FOUND NO RECORDS OF ANY OTHER SURVEYS OF THIS PARCEL.
 6. THE SURVEYOR HAS REVIEWED THE RECORDS OF THE COUNTY CLERK AND HAS FOUND NO RECORDS OF ANY OTHER SURVEYS OF THIS PARCEL.
 7. THE SURVEYOR HAS REVIEWED THE RECORDS OF THE COUNTY CLERK AND HAS FOUND NO RECORDS OF ANY OTHER SURVEYS OF THIS PARCEL.
 8. THE SURVEYOR HAS REVIEWED THE RECORDS OF THE COUNTY CLERK AND HAS FOUND NO RECORDS OF ANY OTHER SURVEYS OF THIS PARCEL.
 9. THE SURVEYOR HAS REVIEWED THE RECORDS OF THE COUNTY CLERK AND HAS FOUND NO RECORDS OF ANY OTHER SURVEYS OF THIS PARCEL.
 10. THE SURVEYOR HAS REVIEWED THE RECORDS OF THE COUNTY CLERK AND HAS FOUND NO RECORDS OF ANY OTHER SURVEYS OF THIS PARCEL.

LEGEND:
 1. BOUNDARY SURVEY
 2. ADJACENT SURVEY
 3. STATE ROAD 771
 4. COUNTY ROAD 771
 5. EASEMENT
 6. ENCUMBRANCE
 7. UNDEVELOPED LAND
 8. DEVELOPED LAND
 9. WATER

LINE TABLE

LINE NO.	DESCRIPTION	BEARING	DISTANCE
1
2
3
4
5
6
7
8
9
10
11
12
13
14
15
16
17
18
19
20
21
22
23
24
25
26
27
28
29
30
31
32
33
34
35
36
37
38
39
40
41
42
43
44
45
46
47
48
49
50

CURVE TABLE

STATION	CHORD BEARING	CHORD DISTANCE	ARC BEARING	ARC DISTANCE
1
2
3
4
5
6
7
8
9
10
11
12
13
14
15
16
17
18
19
20
21
22
23
24
25
26
27
28
29
30
31
32
33
34
35
36
37
38
39
40
41
42
43
44
45
46
47
48
49
50



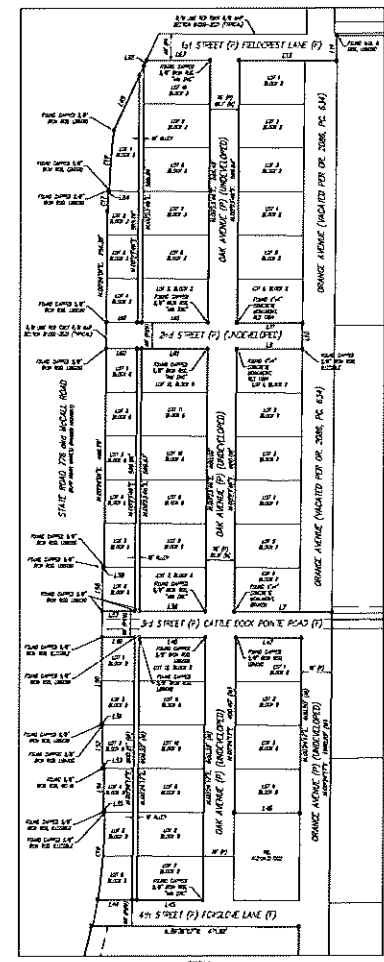
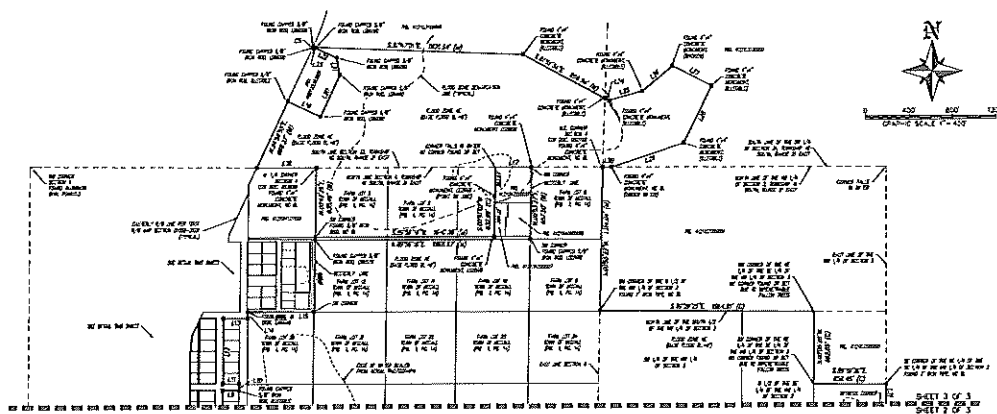
BOUNDARY SURVEY
HARBOR VILLAGE
 CHARLOTTE COUNTY, FLORIDA

DATE	PROJECT	NO. PAGES	NO. OF SHEETS	NO. OF SHEETS	NO. OF SHEETS	NO. OF SHEETS
5/17/24	4188A	28	28	28	28	28

NO.	DESCRIPTION	DATE
1
2
3
4
5
6
7
8
9
10
11
12
13
14
15
16
17
18
19
20
21
22
23
24
25
26
27
28
29
30
31
32
33
34
35
36
37
38
39
40
41
42
43
44
45
46
47
48
49
50

SURVEY PLAT

OF A PARCEL OF LAND LYING IN
SECTIONS 34, 34, TOWNSHIP 43 SOUTH, RANGE 21 EAST,
SECTIONS 4, 4, & 9 AND 10, TOWNSHIP 41 SOUTH, RANGE 21 EAST,
CHARLIE COUNTY, FLORIDA



CURVE TABLE

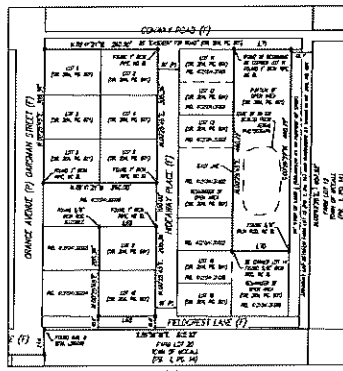
STATION	CHORD BEARING	CHORD DISTANCE	ARC BEARING	ARC DISTANCE
1	S 89° 59' 54" W	100.00	171° 59' 54"	100.00
2	S 89° 59' 54" W	100.00	171° 59' 54"	100.00
3	S 89° 59' 54" W	100.00	171° 59' 54"	100.00
4	S 89° 59' 54" W	100.00	171° 59' 54"	100.00
5	S 89° 59' 54" W	100.00	171° 59' 54"	100.00
6	S 89° 59' 54" W	100.00	171° 59' 54"	100.00
7	S 89° 59' 54" W	100.00	171° 59' 54"	100.00
8	S 89° 59' 54" W	100.00	171° 59' 54"	100.00
9	S 89° 59' 54" W	100.00	171° 59' 54"	100.00
10	S 89° 59' 54" W	100.00	171° 59' 54"	100.00

LINE TABLE

STATION	BEARING	DISTANCE
1	S 89° 59' 54" W	100.00
2	S 89° 59' 54" W	100.00
3	S 89° 59' 54" W	100.00
4	S 89° 59' 54" W	100.00
5	S 89° 59' 54" W	100.00
6	S 89° 59' 54" W	100.00
7	S 89° 59' 54" W	100.00
8	S 89° 59' 54" W	100.00
9	S 89° 59' 54" W	100.00
10	S 89° 59' 54" W	100.00

LINE TABLE

STATION	BEARING	DISTANCE
1	S 89° 59' 54" W	100.00
2	S 89° 59' 54" W	100.00
3	S 89° 59' 54" W	100.00
4	S 89° 59' 54" W	100.00
5	S 89° 59' 54" W	100.00
6	S 89° 59' 54" W	100.00
7	S 89° 59' 54" W	100.00
8	S 89° 59' 54" W	100.00
9	S 89° 59' 54" W	100.00
10	S 89° 59' 54" W	100.00



DETAIL
SCALE 1"=10'

STATION	BEARING	DISTANCE
1	S 89° 59' 54" W	100.00
2	S 89° 59' 54" W	100.00
3	S 89° 59' 54" W	100.00
4	S 89° 59' 54" W	100.00
5	S 89° 59' 54" W	100.00
6	S 89° 59' 54" W	100.00
7	S 89° 59' 54" W	100.00
8	S 89° 59' 54" W	100.00
9	S 89° 59' 54" W	100.00
10	S 89° 59' 54" W	100.00



BOUNDARY SURVEY
HARBOR VILLAGE
CHARLOTTE COUNTY, FLORIDA

DATE	PROJECT	DRAWING	REVISION	PLANT	DESIGNER	SCALE	SHEET
2/1/24	ATWELL	4-28A-24		1	CEB	1"=400'	3 of 3

SKETCH AND DESCRIPTION

OF A PARCEL OF LAND LING IN
 SECTIONS 24, 25, TOWNSHIP 42 NORTH, RANGE 21 EAST,
 SECTION 2, 4, 8, 12, 16, TOWNSHIP 41 SOUTH, RANGE 21 EAST,
 COURSE COUNTY, FLORIDA.

DESCRIPTION (SEE MAP) 100

DESCRIPTION (SEE MAP) 101

DESCRIPTION (SEE MAP) 102

DESCRIPTION (SEE MAP) 103

DESCRIPTION (SEE MAP) 104

DESCRIPTION (SEE MAP) 105

DESCRIPTION (SEE MAP) 106

DESCRIPTION (SEE MAP) 107

DESCRIPTION (SEE MAP) 108

DESCRIPTION (SEE MAP) 109

DESCRIPTION (SEE MAP) 110

DESCRIPTION (SEE MAP) 111

DESCRIPTION (SEE MAP) 112

DESCRIPTION (SEE MAP) 113

DESCRIPTION (SEE MAP) 114

DESCRIPTION (SEE MAP) 115

DESCRIPTION (SEE MAP) 116

DESCRIPTION (SEE MAP) 117

DESCRIPTION (SEE MAP) 118

DESCRIPTION (SEE MAP) 119

DESCRIPTION (SEE MAP) 120

DESCRIPTION (SEE MAP) 121

DESCRIPTION (SEE MAP) 122

DESCRIPTION (SEE MAP) 123

DESCRIPTION (SEE MAP) 124

DESCRIPTION (SEE MAP) 125

DESCRIPTION (SEE MAP) 126

DESCRIPTION (SEE MAP) 127

DESCRIPTION (SEE MAP) 128

DESCRIPTION (SEE MAP) 129

DESCRIPTION (SEE MAP) 130

DESCRIPTION (SEE MAP) 131

DESCRIPTION (SEE MAP) 132

DESCRIPTION (SEE MAP) 133

DESCRIPTION (SEE MAP) 134

DESCRIPTION (SEE MAP) 135

DESCRIPTION (SEE MAP) 136

DESCRIPTION (SEE MAP) 137

DESCRIPTION (SEE MAP) 138

DESCRIPTION (SEE MAP) 139

DESCRIPTION (SEE MAP) 140

DESCRIPTION (SEE MAP) 141

DESCRIPTION (SEE MAP) 142

DESCRIPTION (SEE MAP) 143

DESCRIPTION (SEE MAP) 144

DESCRIPTION (SEE MAP) 145

DESCRIPTION (SEE MAP) 146

DESCRIPTION (SEE MAP) 147

DESCRIPTION (SEE MAP) 148

DESCRIPTION (SEE MAP) 149

DESCRIPTION (SEE MAP) 150

DESCRIPTION (SEE MAP) 151

DESCRIPTION (SEE MAP) 152

DESCRIPTION (SEE MAP) 153

DESCRIPTION (SEE MAP) 154

DESCRIPTION (SEE MAP) 155

DESCRIPTION (SEE MAP) 156

DESCRIPTION (SEE MAP) 157

DESCRIPTION (SEE MAP) 158

DESCRIPTION (SEE MAP) 159

DESCRIPTION (SEE MAP) 160

DESCRIPTION (SEE MAP) 161

DESCRIPTION (SEE MAP) 162

DESCRIPTION (SEE MAP) 163

DESCRIPTION (SEE MAP) 164

DESCRIPTION (SEE MAP) 165

DESCRIPTION (SEE MAP) 166

DESCRIPTION (SEE MAP) 167

DESCRIPTION (SEE MAP) 168

DESCRIPTION (SEE MAP) 169

DESCRIPTION (SEE MAP) 170

DESCRIPTION (SEE MAP) 171

DESCRIPTION (SEE MAP) 172

DESCRIPTION (SEE MAP) 173

DESCRIPTION (SEE MAP) 174

DESCRIPTION (SEE MAP) 175

DESCRIPTION (SEE MAP) 176

DESCRIPTION (SEE MAP) 177

DESCRIPTION (SEE MAP) 178

DESCRIPTION (SEE MAP) 179

DESCRIPTION (SEE MAP) 180

DESCRIPTION (SEE MAP) 181

DESCRIPTION (SEE MAP) 182

DESCRIPTION (SEE MAP) 183

DESCRIPTION (SEE MAP) 184

DESCRIPTION (SEE MAP) 185

DESCRIPTION (SEE MAP) 186

DESCRIPTION (SEE MAP) 187

DESCRIPTION (SEE MAP) 188

DESCRIPTION (SEE MAP) 189

DESCRIPTION (SEE MAP) 190

DESCRIPTION (SEE MAP) 191

DESCRIPTION (SEE MAP) 192

DESCRIPTION (SEE MAP) 193

DESCRIPTION (SEE MAP) 194

DESCRIPTION (SEE MAP) 195

DESCRIPTION (SEE MAP) 196

DESCRIPTION (SEE MAP) 197

DESCRIPTION (SEE MAP) 198

DESCRIPTION (SEE MAP) 199

DESCRIPTION (SEE MAP) 200

DESCRIPTION (SEE MAP) 201

DESCRIPTION (SEE MAP) 202

DESCRIPTION (SEE MAP) 203

DESCRIPTION (SEE MAP) 204

DESCRIPTION (SEE MAP) 205

DESCRIPTION (SEE MAP) 206

DESCRIPTION (SEE MAP) 207

DESCRIPTION (SEE MAP) 208

DESCRIPTION (SEE MAP) 209

DESCRIPTION (SEE MAP) 210

DESCRIPTION (SEE MAP) 211

DESCRIPTION (SEE MAP) 212

DESCRIPTION (SEE MAP) 213

DESCRIPTION (SEE MAP) 214

DESCRIPTION (SEE MAP) 215

DESCRIPTION (SEE MAP) 216

DESCRIPTION (SEE MAP) 217

DESCRIPTION (SEE MAP) 218

DESCRIPTION (SEE MAP) 219

DESCRIPTION (SEE MAP) 220

DESCRIPTION (SEE MAP) 221

DESCRIPTION (SEE MAP) 222

DESCRIPTION (SEE MAP) 223

DESCRIPTION (SEE MAP) 224

DESCRIPTION (SEE MAP) 225

DESCRIPTION (SEE MAP) 226

DESCRIPTION (SEE MAP) 227

DESCRIPTION (SEE MAP) 228

DESCRIPTION (SEE MAP) 229

DESCRIPTION (SEE MAP) 230

DESCRIPTION (SEE MAP) 231

DESCRIPTION (SEE MAP) 232

DESCRIPTION (SEE MAP) 233

DESCRIPTION (SEE MAP) 234

DESCRIPTION (SEE MAP) 235

DESCRIPTION (SEE MAP) 236

DESCRIPTION (SEE MAP) 237

DESCRIPTION (SEE MAP) 238

DESCRIPTION (SEE MAP) 239

DESCRIPTION (SEE MAP) 240

DESCRIPTION (SEE MAP) 241

DESCRIPTION (SEE MAP) 242

DESCRIPTION (SEE MAP) 243

DESCRIPTION (SEE MAP) 244

DESCRIPTION (SEE MAP) 245

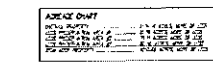
DESCRIPTION (SEE MAP) 246

DESCRIPTION (SEE MAP) 247

DESCRIPTION (SEE MAP) 248

DESCRIPTION (SEE MAP) 249

DESCRIPTION (SEE MAP) 250



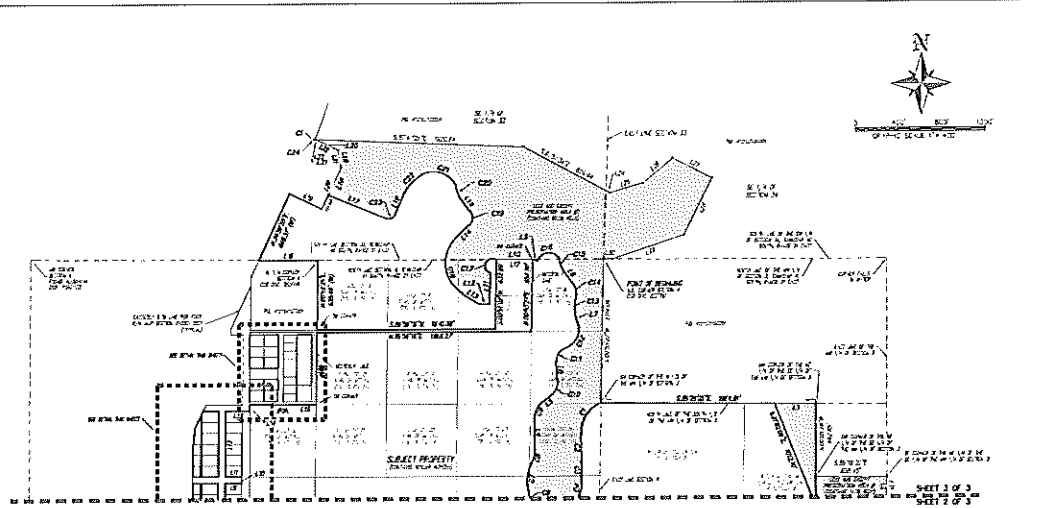
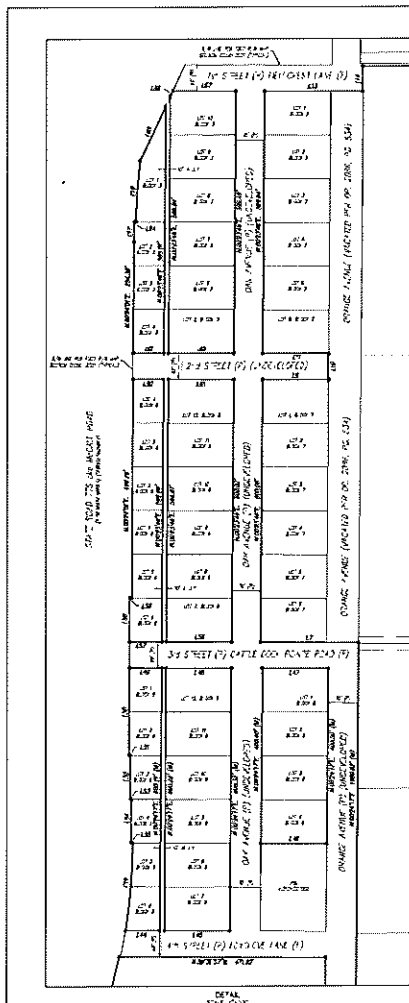
SURVEYOR'S CERTIFICATE 100

- LEGEND**
- 1. BOUNDARY LINE
 - 2. CURVE LINE
 - 3. CORNER MARK
 - 4. CONTOUR LINE
 - 5. UTILITY LINE
 - 6. EASEMENT LINE
 - 7. ROAD RIGHT-OF-WAY
 - 8. WATER COURSE
 - 9. WOOD
 - 10. ROCK

NO.	DESCRIPTION	DATE
1		
2		
3		
4		
5		
6		
7		
8		
9		
10		
11		
12		
13		
14		
15		
16		
17		
18		
19		
20		
21		
22		
23		
24		
25		



SKETCH AND DESCRIPTION					
CGMU AREA					
CHARLOTTE COUNTY, FLORIDA					
DATE	PROJECT	PLANNED BY	DESIGN	DRAWN	SCALE
3/21/24	4.384	CENT EP			1"=50'
SHEET					1 of 3



CURVE TABLE

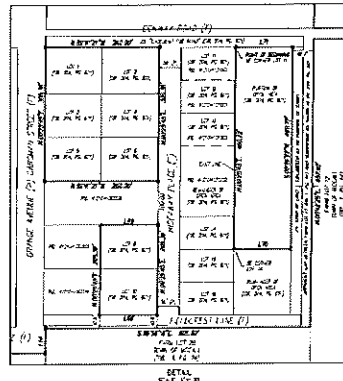
STATION	CHORD BEARING	CHORD DISTANCE	ARC DISTANCE	ARC BEARING
1+00.00	S 89° 59' 59" W	100.00	100.00	89° 59' 59"
1+100.00	S 89° 59' 59" W	100.00	100.00	89° 59' 59"
1+200.00	S 89° 59' 59" W	100.00	100.00	89° 59' 59"
1+300.00	S 89° 59' 59" W	100.00	100.00	89° 59' 59"
1+400.00	S 89° 59' 59" W	100.00	100.00	89° 59' 59"
1+500.00	S 89° 59' 59" W	100.00	100.00	89° 59' 59"

LINE TABLE

LINE NO.	LINE BEARING	LINE DISTANCE	LINE AREA
1	S 89° 59' 59" W	100.00	100.00
2	S 89° 59' 59" W	100.00	100.00
3	S 89° 59' 59" W	100.00	100.00
4	S 89° 59' 59" W	100.00	100.00
5	S 89° 59' 59" W	100.00	100.00
6	S 89° 59' 59" W	100.00	100.00
7	S 89° 59' 59" W	100.00	100.00
8	S 89° 59' 59" W	100.00	100.00
9	S 89° 59' 59" W	100.00	100.00
10	S 89° 59' 59" W	100.00	100.00

LINE TABLE

LINE NO.	LINE BEARING	LINE DISTANCE	LINE AREA
11	S 89° 59' 59" W	100.00	100.00
12	S 89° 59' 59" W	100.00	100.00
13	S 89° 59' 59" W	100.00	100.00
14	S 89° 59' 59" W	100.00	100.00
15	S 89° 59' 59" W	100.00	100.00
16	S 89° 59' 59" W	100.00	100.00
17	S 89° 59' 59" W	100.00	100.00
18	S 89° 59' 59" W	100.00	100.00
19	S 89° 59' 59" W	100.00	100.00
20	S 89° 59' 59" W	100.00	100.00



LINE TABLE

LINE NO.	LINE BEARING	LINE DISTANCE	LINE AREA
21	S 89° 59' 59" W	100.00	100.00
22	S 89° 59' 59" W	100.00	100.00
23	S 89° 59' 59" W	100.00	100.00
24	S 89° 59' 59" W	100.00	100.00
25	S 89° 59' 59" W	100.00	100.00
26	S 89° 59' 59" W	100.00	100.00
27	S 89° 59' 59" W	100.00	100.00
28	S 89° 59' 59" W	100.00	100.00
29	S 89° 59' 59" W	100.00	100.00
30	S 89° 59' 59" W	100.00	100.00

CURVE TABLE

STATION	CHORD BEARING	CHORD DISTANCE	ARC DISTANCE	ARC BEARING
1+00.00	S 89° 59' 59" W	100.00	100.00	89° 59' 59"
1+100.00	S 89° 59' 59" W	100.00	100.00	89° 59' 59"
1+200.00	S 89° 59' 59" W	100.00	100.00	89° 59' 59"
1+300.00	S 89° 59' 59" W	100.00	100.00	89° 59' 59"
1+400.00	S 89° 59' 59" W	100.00	100.00	89° 59' 59"
1+500.00	S 89° 59' 59" W	100.00	100.00	89° 59' 59"

- LEGEND**
- 1. BOUNDARY
 - 2. CURVE
 - 3. EASEMENT
 - 4. EGRESS
 - 5. EXISTING
 - 6. FUTURE
 - 7. GROUND
 - 8. IMPROVEMENT
 - 9. INTEREST LINE
 - 10. LOT
 - 11. RIGHT OF WAY
 - 12. ROAD
 - 13. SURFACE
 - 14. SURVEY
 - 15. TYPICAL
 - 16. UNDEVELOPED
 - 17. UNIMPROVED
 - 18. UNIMPROVED
 - 19. UNIMPROVED
 - 20. UNIMPROVED
 - 21. UNIMPROVED
 - 22. UNIMPROVED
 - 23. UNIMPROVED
 - 24. UNIMPROVED
 - 25. UNIMPROVED
 - 26. UNIMPROVED
 - 27. UNIMPROVED
 - 28. UNIMPROVED
 - 29. UNIMPROVED
 - 30. UNIMPROVED

NOTE: NOT A BOUNDARY SURVEY

SKETCH AND DESCRIPTION
CGMU AREA
CHARLOTTE COUNTY, FLORIDA

ATWELL
SURVEYORS
1000 W. BAY ST.
TALLAHASSEE, FL 32301
TEL: 904.833.1111
WWW.ATWELLSURVEYORS.COM

DATE	PROJECT	DATE	BY	CHECKED	SCALE	SHEET
5/11/21	4 814	4 864	ESB	JR	AS SHOWN	3 of 3



DESCRIPTION OF A PARCEL OF LAND
LYING IN SECTIONS 3 AND 10, T-41-S, R-21-E,
CHARLOTTE COUNTY, FLORIDA.

(PRESERVATION AREA #2)

A TRACT OR PARCEL OF LAND SITUATED IN THE STATE OF FLORIDA, COUNTY OF CHARLOTTE, LYING IN SECTIONS 3 AND 10, TOWNSHIP 41 SOUTH, RANGE 21 EAST, AND BEING FURTHER BOUNDED AND DESCRIBED AS FOLLOWS:

COMMENCING AT THE WEST 1/4 CORNER OF SAID SECTION 3, AS DEPICTED IN CERTIFIED CORNER RECORD DOCUMENT #082719; THENCE S.00°34'26"W. (FOR A BASIS OF BEARINGS) ALONG THE WEST LINE OF SAID SECTION 3 FOR 1304.11 FEET TO A POINT ON SAID WEST LINE, SAID POINT ALSO BEING THE POINT OF BEGINNING; THENCE CONTINUE S.00°34'26"W. ALONG SAID WEST LINE FOR 1348.15 FEET TO THE SOUTHWEST CORNER OF SAID SECTION 3, AS DEPICTED IN CERTIFIED CORNER RECORD DOCUMENT #082722; THENCE S.00°00'18"W. ALONG THE WEST LINE OF SAID SECTION 10 FOR 331.76 FEET TO A POINT ON SAID WEST LINE; THENCE S.89°40'52"E. FOR 80.38 FEET TO THE BEGINNING OF A NON-TANGENT CURVE TO THE RIGHT HAVING A RADIUS OF 159.18 FEET, A DELTA ANGLE OF 53°33'05", A CHORD BEARING OF S.60°39'27"E., A CHORD DISTANCE OF 143.42 FEET; THENCE ALONG THE ARC OF SAID CURVE FOR 148.78 FEET TO THE BEGINNING OF A REVERSE CURVE TO THE LEFT HAVING A RADIUS OF 745.29 FEET, A DELTA ANGLE OF 13°01'38", A CHORD BEARING OF S.39°26'04"E. AND A CHORD DISTANCE OF 169.09 FEET; THENCE ALONG THE ARC OF SAID CURVE FOR 169.45 FEET TO THE BEGINNING OF A COMPOUND CURVE TO THE LEFT HAVING A RADIUS OF 271.00 FEET, A DELTA ANGLE OF 64°47'41", A CHORD BEARING OF S.83°59'08"E. AND A CHORD DISTANCE OF 290.40 FEET; THENCE ALONG THE ARC OF SAID CURVE FOR 306.47 FEET TO THE BEGINNING OF A REVERSE CURVE TO THE RIGHT HAVING A RADIUS OF 1439.11 FEET, A DELTA ANGLE OF 13°26'03", A CHORD BEARING OF N.72°36'10"E. AND A CHORD DISTANCE OF 336.66 FEET; THENCE ALONG THE ARC OF SAID CURVE FOR 337.43 FEET TO THE BEGINNING OF A REVERSE CURVE TO THE LEFT HAVING A RADIUS OF 314.71 FEET, A DELTA ANGLE OF 32°56'41", A CHORD BEARING OF N.60°03'38"E. AND A CHORD DISTANCE OF 178.47 FEET; THENCE ALONG THE ARC OF SAID CURVE FOR 180.96 FEET TO THE BEGINNING OF A REVERSE CURVE TO THE RIGHT HAVING A RADIUS OF 304.02 FEET, A DELTA ANGLE OF 32°33'38", A CHORD BEARING OF N.58°55'09"E. AND A CHORD DISTANCE OF 170.46 FEET; THENCE ALONG THE ARC OF SAID CURVE FOR 172.77 FEET; THENCE N.76°17'16"E. FOR 344.82 FEET TO THE BEGINNING OF A NON-TANGENT CURVE TO THE LEFT HAVING A RADIUS OF 358.09 FEET, A DELTA ANGLE OF 56°54'45", A CHORD BEARING OF N.38°21'26"E. AND A CHORD DISTANCE OF 341.25 FEET; THENCE ALONG THE ARC OF SAID CURVE FOR 355.69 FEET TO THE BEGINNING OF A REVERSE CURVE TO THE RIGHT HAVING A RADIUS OF 402.36 FEET, A DELTA ANGLE OF 42°17'21", A CHORD BEARING OF N.30°45'37"E. AND A CHORD DISTANCE OF 290.28 FEET; THENCE ALONG THE ARC OF SAID CURVE FOR 296.98 FEET; THENCE N.53°16'10"E. FOR 212.70 FEET TO THE BEGINNING OF A NON-TANGENT CURVE TO THE LEFT HAVING A RADIUS OF 491.53 FEET, A DELTA ANGLE OF 28°53'55", A CHORD BEARING OF N.41°10'33"E. AND A CHORD DISTANCE OF 245.29 FEET; THENCE ALONG THE ARC OF SAID CURVE FOR 247.91 FEET TO THE BEGINNING OF A REVERSE CURVE TO THE RIGHT HAVING A RADIUS OF 448.95 FEET, A DELTA ANGLE OF 31°42'37", A CHORD BEARING OF N.38°47'30"E. AND A CHORD DISTANCE OF 245.31 FEET; THENCE ALONG THE ARC OF SAID CURVE FOR 248.47 FEET TO THE BEGINNING OF A REVERSE CURVE TO THE LEFT HAVING A RADIUS OF 661.98 FEET, A DELTA ANGLE OF 57°01'16", A CHORD BEARING OF N.26°46'42"E. AND A CHORD DISTANCE OF 631.95 FEET; THENCE ALONG THE ARC OF SAID CURVE FOR 658.80

SHEET 1 OF 4

SERVING THE STATE OF FLORIDA

FEET; THENCE N.00°15'16"W. FOR 630.48 FEET TO THE BEGINNING OF A NON-TANGENT CURVE TO THE LEFT HAVING A RADIUS OF 416.91 FEET, A DELTA ANGLE OF 29°27'53", A CHORD BEARING OF N.13°11'34"W. AND A CHORD DISTANCE OF 212.04 FEET; THENCE ALONG THE ARC OF SAID CURVE FOR 214.40 FEET TO THE BEGINNING OF A REVERSE CURVE TO THE RIGHT HAVING A RADIUS OF 308.10 FEET, A DELTA ANGLE OF 70°05'45", A CHORD BEARING OF N.12°21'55"E. AND A CHORD DISTANCE OF 353.86 FEET; THENCE ALONG THE ARC OF SAID CURVE FOR 376.93 FEET; THENCE N.89°09'41"W. ALONG A LINE BEING PARALLEL TO AND 50 FEET SOUTH OF THE NORTH LINE OF THE SOUTHWEST 1/4 OF SAID SECTION 3 FOR 837.69 FEET TO THE NORTHEAST CORNER OF LANDS DESCRIBED IN OFFICIAL RECORDS BOOK 838, PAGE 500, PUBLIC RECORDS OF CHARLOTTE COUNTY, FLORIDA; THENCE ALONG THE EASTERLY, SOUTHERLY AND SOUTHWESTERLY LINES OF SAID LANDS THE FOLLOWING 4 COURSES: S.00°34'44"W. FOR 1991.48; THENCE S.45°34'26"W. FOR 275.00 FEET; THENCE N.89°25'34"W. FOR 1350.00 FEET; THENCE N.17°25'34"W. FOR 988.77 FEET TO A POINT ON THE WEST LINE OF SAID SECTION 3, SAID POINT ALSO BEING THE POINT OF BEGINNING.

CONTAINS 71.11 ACRES, MORE OR LESS.

ATWELL, LLC
FLORIDA LICENSED BUSINESS NO. LB7832

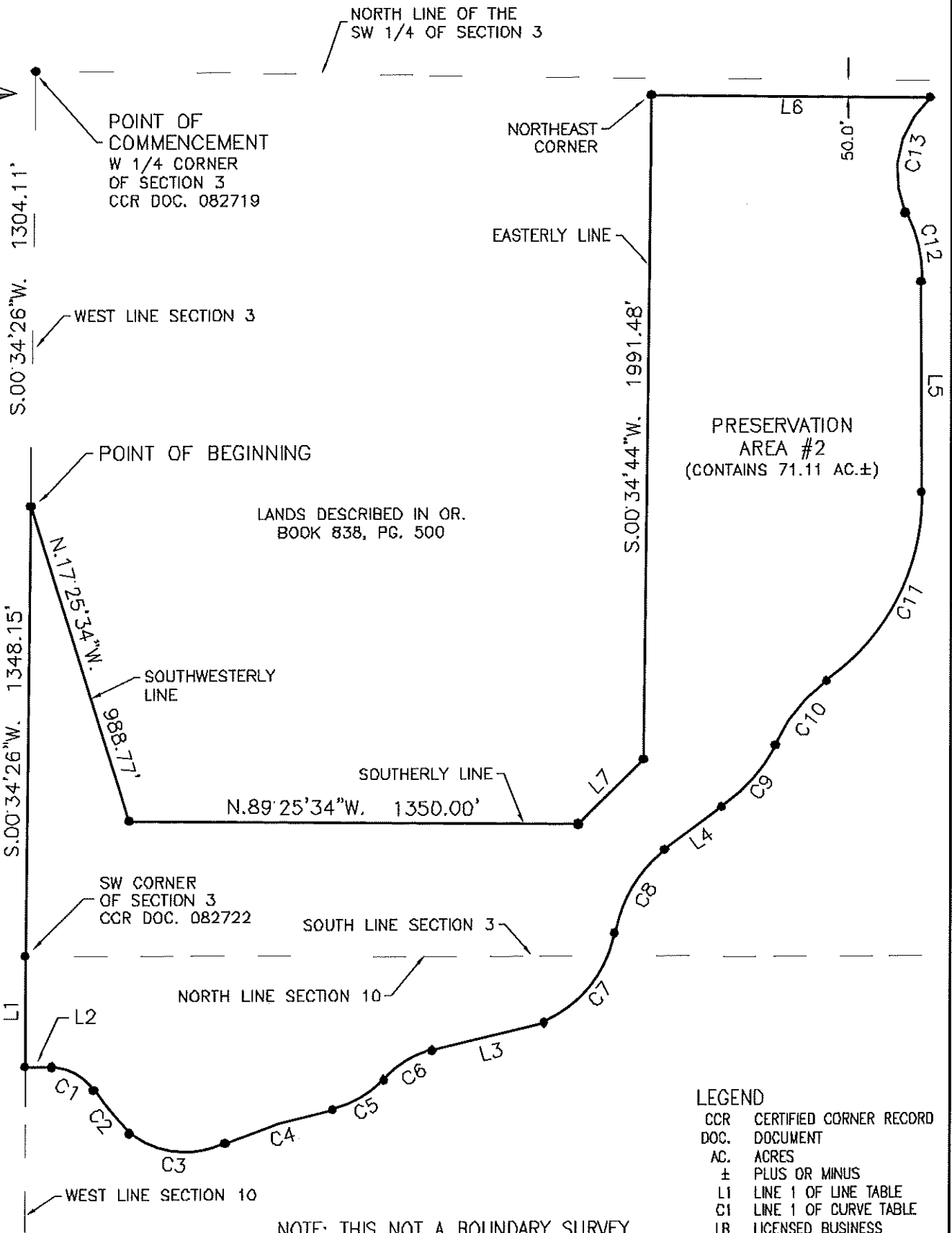
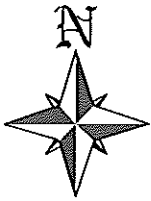
MAY 31, 2024

C. DREW BRANCH, P.S.M.
PROFESSIONAL SURVEYOR & MAPPER
FLORIDA CERTIFICATION NO. 5542

SHEET 2 OF 4

SERVING THE STATE OF FLORIDA

4161 Tamiami Trail – Building 5, Unit 501, Port Charlotte, FL 33952
(941) 625-1165 www.atwell-group.com



PRESERVATION
AREA #2
(CONTAINS 71.11 AC.±)

LANDS DESCRIBED IN OR.
BOOK 838, PG. 500

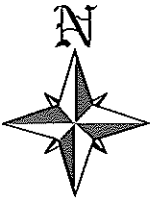
LEGEND

CCR	CERTIFIED CORNER RECORD
DOC.	DOCUMENT
AC.	ACRES
±	PLUS OR MINUS
L1	LINE 1 OF LINE TABLE
C1	LINE 1 OF CURVE TABLE
LB	LICENSED BUSINESS

NOTE: THIS NOT A BOUNDARY SURVEY

ATWELL
866.850.4200 www.atwell-group.com
4151 TAVIAMI TRAIL, BLDG 5, UNIT 501
PORT CHARLOTTE, FL 33902
941.825.1193

SKETCH AND DESCRIPTION					
PRESERVATION AREA #2					
CHARLOTTE COUNTY, FLORIDA					
COMPLETION DATE:	PROJECT:	DRAFTED BY:	DESIGNED BY:	REVIEWED BY:	SHEET:
5/28/24	4196A	JB		COB	3 of 4



LINE TABLE

LINE	BEARING	DISTANCE
L1	S.00°00'18"W.	331.76'
L2	S.89°40'52"E.	80.38'
L3	N.76°17'16"E.	344.82'
L4	N.53°16'10"E.	212.70'
L5	N.00°15'18"W.	630.48'
L6	N.89°09'41"W.	837.69'
L7	S.45°34'26"W.	275.00'

CURVE TABLE

CURVE	RADIUS	ARC LENGTH	CHORD LENGTH	CHORD BEARING	DELTA ANGLE
C1	159.18'	148.78'	143.42'	S.60°39'27"E.	53°33'05"
C2	745.29'	169.45'	169.09'	S.39°26'04"E.	13°01'38"
C3	271.00'	306.47'	290.40'	S.83°59'08"E.	64°47'41"
C4	1439.11'	337.43'	336.66'	N.72°36'10"E.	13°26'03"
C5	314.71'	180.96'	178.47'	N.60°03'38"E.	32°56'41"
C6	304.02'	172.77'	170.46'	N.58°55'09"E.	32°33'38"
C7	358.09'	355.69'	341.25'	N.38°21'26"E.	56°54'45"
C8	402.36'	296.98'	290.28'	N.30°45'37"E.	42°17'21"
C9	491.53'	247.91'	245.29'	N.41°10'33"E.	28°53'55"
C10	448.95'	248.47'	245.31'	N.38°47'30"E.	31°42'37"
C11	661.98'	658.80'	631.95'	N.26°46'42"E.	57°01'16"
C12	416.91'	214.40'	212.04'	N.13°11'34"W.	29°27'53"
C13	308.10'	376.93'	353.86'	N.12°21'55"E.	70°05'45"

LEGEND

- CCR CERTIFIED CORNER RECORD
- DOC. DOCUMENT
- AC. ACRES
- ± PLUS OR MINUS
- L1 LINE 1 OF LINE TABLE
- C1 LINE 1 OF CURVE TABLE
- LB LICENSED BUSINESS

NOTE: THIS NOT A BOUNDARY SURVEY



ATWELL

866.850.4200 www.atwell-group.com
 4151 TANIAMI TRAIL, BLDG A, UNIT 501
 FORT CHARLOTTE, FL 33902
 941.925.1183

SKETCH AND DESCRIPTION
 PRESERVATION AREA #2
 CHARLOTTE COUNTY, FLORIDA

COMPLETION DATE:	PROJECT:	DRAFTED BY:	DESIGNED BY:	REVIEWED BY:	SHEET:
8/28/24	4100A	JS		COB	4 of 4



DESCRIPTION OF A PARCEL OF LAND
LYING IN SECTIONS 33 AND 34, T-40-S, R-21-E, AND
SECTION 4, T-41-S, R-21-E,
CHARLOTTE COUNTY, FLORIDA.

(PRESERVATION AREA 3)

A TRACT OR PARCEL OF LAND SITUATED IN THE STATE OF FLORIDA, COUNTY OF CHARLOTTE, LYING IN SECTIONS 33 AND 34, TOWNSHIP 40 SOUTH, RANGE 21 EAST AND SECTION 4, TOWNSHIP 41 SOUTH, RANGE 21 EAST, BEING FURTHER BOUNDED AND DESCRIBED AS FOLLOWS:

BEGINNING AT THE NORTHEAST CORNER OF SAID SECTION 4, AS DEPICTED IN CERTIFIED CORNER RECORD DOCUMENT #052700; THENCE S.00°55'22"W. ALONG THE EAST LINE OF THE NORTHEAST 1/4 OF SAID SECTION 4 (FOR A BASIS OF BEARINGS) FOR 1314.04 FEET TO A POINT ON SAID EAST LINE, SAID POINT BEING THE BEGINNING OF A NON-TANGENT CURVE TO THE LEFT HAVING A RADIUS OF 279.82 FEET, A DELTA ANGLE OF 75°23'34", A CHORD BEARING OF S.32°31'31"W. AND A CHORD DISTANCE OF 342.21 FEET; THENCE ALONG THE ARC OF SAID CURVE FOR 368.20 FEET TO THE BEGINNING OF A REVERSE CURVE TO THE RIGHT HAVING A RADIUS OF 1921.19 FEET, A DELTA ANGLE OF 07°14'21", A CHORD BEARING OF S.01°33'06"E. AND A CHORD DISTANCE OF 242.58 FEET; THENCE ALONG THE ARC OF SAID CURVE FOR 242.74 FEET TO THE BEGINNING OF A REVERSE CURVE TO THE LEFT HAVING A RADIUS OF 2172.36 FEET, A DELTA ANGLE OF 04°47'31", A CHORD BEARING OF S.00°19'40"E. AND A CHORD DISTANCE OF 181.63 FEET; THENCE ALONG THE ARC OF SAID CURVE FOR 181.68 FEET TO THE BEGINNING OF A REVERSE CURVE TO THE RIGHT HAVING A RADIUS OF 284.80 FEET, A DELTA ANGLE OF 26°50'07", A CHORD BEARING OF S.10°41'38"W. AND A CHORD DISTANCE OF 132.17 FEET; THENCE ALONG THE ARC OF SAID CURVE FOR 133.39 FEET TO THE BEGINNING OF A REVERSE CURVE TO THE LEFT HAVING A RADIUS OF 325.84 FEET, A DELTA ANGLE OF 92°49'02", A CHORD BEARING OF S.22°17'50"E. AND A CHORD DISTANCE OF 472.00 FEET; THENCE ALONG THE ARC OF SAID CURVE FOR 527.85 FEET TO A POINT ON THE EAST LINE OF THE NORTHEAST 1/4 OF SAID SECTION 4; THENCE S.00°58'40"W. ALONG SAID EAST LINE FOR 19.35 FEET; THENCE N.88°36'50"W. FOR 651.03 FEET; THENCE N.03°04'09"E. FOR 379.40 FEET TO THE BEGINNING OF CURVE TO THE LEFT HAVING A RADIUS OF 203.73 FEET, A DELTA ANGLE OF 22°38'09", A CHORD BEARING OF N.08°14'56"W. AND A CHORD DISTANCE OF 79.97 FEET; THENCE ALONG THE ARC OF SAID CURVE FOR 80.49 FEET TO THE BEGINNING OF A REVERSE CURVE TO THE RIGHT HAVING A RADIUS OF 341.30 FEET, A DELTA ANGLE OF 46°25'21", A CHORD BEARING OF N.03°38'40"E. AND A CHORD DISTANCE OF 269.03 FEET; THENCE ALONG THE ARC OF SAID CURVE FOR 276.53 FEET TO THE BEGINNING OF A REVERSE CURVE TO THE LEFT HAVING A RADIUS OF 337.20 FEET, A DELTA ANGLE OF 26°43'51", A CHORD BEARING OF N.13°29'25"E. AND A CHORD DISTANCE OF 155.89 FEET; THENCE ALONG THE ARC OF SAID CURVE FOR 157.32 FEET; THENCE N.01°19'45"W. FOR 269.63 FEET TO THE BEGINNING OF A NON-TANGENT CURVE TO THE RIGHT HAVING A RADIUS OF 172.01 FEET, DELTA ANGLE OF 53°24'50", A CHORD BEARING OF N.25°16'04"E. AND A CHORD DISTANCE OF 154.62 FEET; THENCE ALONG THE ARC OF SAID CURVE FOR 160.36 FEET; THENCE N.53°39'48"E. FOR 113.17 FEET TO THE BEGINNING OF A NON-TANGENT CURVE TO THE LEFT HAVING A RADIUS OF 180.35 FEET, A DELTA ANGLE OF 51°58'56", A CHORD BEARING OF N.21°13'32"E. AND A CHORD DISTANCE OF 158.07 FEET; THENCE ALONG THE ARC OF SAID CURVE FOR 163.62 FEET; THENCE N.03°59'00"W. FOR 161.39 FEET TO THE BEGINNING OF A NON-TANGENT CURVE TO THE RIGHT HAVING A RADIUS OF 115.47 FEET, A DELTA ANGLE OF 79°29'20", A CHORD BEARING OF N.34°10'01"E. AND A CHORD

SHEET 1 OF 5

SERVING THE STATE OF FLORIDA

DISTANCE OF 147.66 FEET; THENCE ALONG THE ARC OF SAID CURVE FOR 160.20 FEET TO THE BEGINNING OF A REVERSE CURVE TO THE LEFT HAVING A RADIUS OF 183.30 FEET, A DELTA ANGLE OF 91°10'15", A CHORD BEARING OF N.25°02'58"E. AND A CHORD DISTANCE OF 261.85 FEET; THENCE ALONG THE ARC OF SAID CURVE FOR 291.67 FEET; THENCE N.14°36'39"W. FOR 90.17 FEET TO THE BEGINNING OF A NON-TANGENT CURVE TO THE RIGHT HAVING A RADIUS OF 290.35 FEET, A DELTA ANGLE OF 28°27'17", A CHORD BEARING OF N.03°00'22"E. AND A CHORD DISTANCE OF 142.72 FEET; THENCE ALONG THE ARC OF SAID CURVE FOR 144.20 FEET TO THE BEGINNING OF A REVERSE CURVE TO THE LEFT HAVING A RADIUS OF 150.73 FEET, A DELTA ANGLE OF 53°56'05", A CHORD BEARING OF N.13°55'32"W. AND A CHORD DISTANCE OF 136.70 FEET; THENCE ALONG THE ARC OF SAID CURVE FOR 141.88 FEET; THENCE N.35°09'58"W. FOR 155.01 FEET TO THE BEGINNING OF A CURVE TO THE RIGHT HAVING A RADIUS OF 170.84 FEET, A DELTA ANGLE OF 35°11'07", A CHORD BEARING OF N.17°34'24"W. AND A CHORD DISTANCE OF 103.27 FEET; THENCE ALONG THE ARC OF SAID CURVE FOR 104.91 FEET TO THE BEGINNING OF A REVERSE CURVE TO THE LEFT HAVING A RADIUS OF 117.72 FEET, A DELTA ANGLE OF 120°04'52", A CHORD BEARING OF S.81°28'03"W. AND A CHORD DISTANCE OF 203.98 FEET; THENCE ALONG THE ARC OF SAID CURVE FOR 246.72 FEET; THENCE N.69°00'51"W. FOR 48.49 FEET TO A POINT ON THE SOUTH LINE OF SAID SECTION 33; THENCE N.89°58'30"W. ALONG SAID SOUTH LINE FOR 328.71 FEET TO THE BEGINNING OF A NON-TANGENT CURVE TO THE LEFT HAVING A RADIUS OF 66.38 FEET, A DELTA ANGLE OF 198°50'43", A CHORD BEARING OF S.24°25'23"W. AND A CHORD DISTANCE OF 130.97 FEET; THENCE ALONG THE ARC OF SAID CURVE FOR 230.38 FEET; THENCE S.01°21'18"W. FOR 286.67 FEET; THENCE N.87°26'43"W. FOR 101.02 FEET; THENCE N.57°38'46"W. FOR 169.62 FEET TO THE BEGINNING OF A NON-TANGENT CURVE TO THE RIGHT HAVING A RADIUS OF 329.62 FEET, A DELTA ANGLE OF 106°22'56", A CHORD BEARING OF N.05°45'37"W. AND A CHORD DISTANCE OF 527.82 FEET; THENCE ALONG THE ARC OF SAID CURVE FOR 612.02 FEET; THENCE N.46°37'45"E. FOR 156.36 FEET TO THE BEGINNING OF A NON-TANGENT CURVE TO THE LEFT HAVING A RADIUS OF 97.44 FEET, A DELTA ANGLE OF 77°19'56", A CHORD BEARING OF N.01°07'22"E. AND A CHORD DISTANCE OF 121.76 FEET; THENCE ALONG THE ARC OF SAID CURVE FOR 131.52 FEET; THENCE N.35°18'13"W. FOR 155.02 FEET TO THE BEGINNING OF A NON-TANGENT CURVE TO THE RIGHT HAVING A RADIUS OF 240.62 FEET, A DELTA ANGLE OF 26°34'17", A CHORD BEARING OF N.18°15'11"W. AND A CHORD DISTANCE OF 110.59 FEET; THENCE ALONG THE ARC OF SAID CURVE FOR 111.59 FEET TO THE BEGINNING OF A REVERSE CURVE TO THE LEFT HAVING A RADIUS OF 230.71 FEET, A DELTA ANGLE OF 90°27'51", A CHORD BEARING OF N.71°10'05"W. AND A CHORD DISTANCE OF 327.59 FEET; THENCE ALONG THE ARC OF SAID CURVE FOR 364.27 FEET TO THE BEGINNING OF A COMPOUND CURVE TO THE LEFT HAVING A RADIUS OF 370.92 FEET, A DELTA ANGLE OF 35°39'47", A CHORD BEARING OF S.44°08'09"W. AND A CHORD DISTANCE OF 227.16 FEET; THENCE ALONG THE ARC OF SAID CURVE FOR 230.87 FEET; THENCE S.23°11'46"W. FOR 209.10 FEET TO THE BEGINNING OF A NON-TANGENT CURVE TO THE RIGHT HAVING A RADIUS OF 68.33 FEET, A DELTA ANGLE OF 94°24'55", A CHORD BEARING OF S.66°27'41"W. AND A CHORD DISTANCE OF 100.28 FEET; THENCE ALONG THE ARC OF SAID CURVE FOR 112.59 FEET; THENCE N.68°10'24"W. FOR 576.90 FEET TO A POINT ON THE EASTERLY RIGHT-OF-WAY LINE OF STATE ROAD 776 (aka McCALL ROAD), AS DEPICTED ON FLORIDA DEPARTMENT OF TRANSPORTATION RIGHT-OF-WAY MAP SECTION 01050-2521; THENCE ALONG SAID EASTERLY RIGHT-OF-WAY LINE THE FOLLOWING 5 COURSES: N.25°00'49"E. FOR 277.52 FEET; THENCE N.09°55'23"W. FOR 159.14 FEET; THENCE N.64°59'20"W. FOR 211.92 FEET; THENCE N.87°17'38"W. FOR 27.71 FEET TO THE BEGINNING OF A NON-TANGENT CURVE TO THE LEFT HAVING A RADIUS OF 2356.83 FEET, A DELTA ANGLE OF 00°12'19", A CHORD BEARING OF N.24°54'16"E. AND A CHORD DISTANCE OF 8.44 FEET; THENCE ALONG THE ARC OF SAID CURVE FOR 8.44 FEET; THENCE S.87°47'01"E. FOR 1920.70 FEET; THENCE S.61°51'34"E. FOR 859.94 FEET TO A POINT ON THE EAST LINE OF SAID SECTION 33; THENCE S.61°58'33"E. FOR 40.30 FEET; THENCE N.74°10'10"E. FOR 315.16 FEET;

SHEET 2 OF 5

SERVING THE STATE OF FLORIDA

4161 Tamiami Trail – Building 5, Unit 501, Port Charlotte, FL 33952
(941) 625-1165 www.atwell-group.com

THENCE N.50°09'19"E. FOR 360.02 FEET; THENCE S.62°48'04"E. FOR 404.94 FEET; THENCE S.26°09'43"W. FOR 579.76 FEET; THENCE S.71°31'20"W. FOR 694.38 FEET TO A POINT ON THE SOUTH LINE OF SAID SECTION 34; THENCE N.89°49'55"W. ALONG SAID SOUTH LINE FOR 82.63 FEET TO THE POINT OF BEGINNING.

CONTAINS 80.55 ACRES, MORE OR LESS.

ATWELL, LLC
FLORIDA LICENSED BUSINESS NO. LB7832

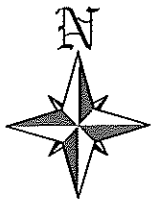
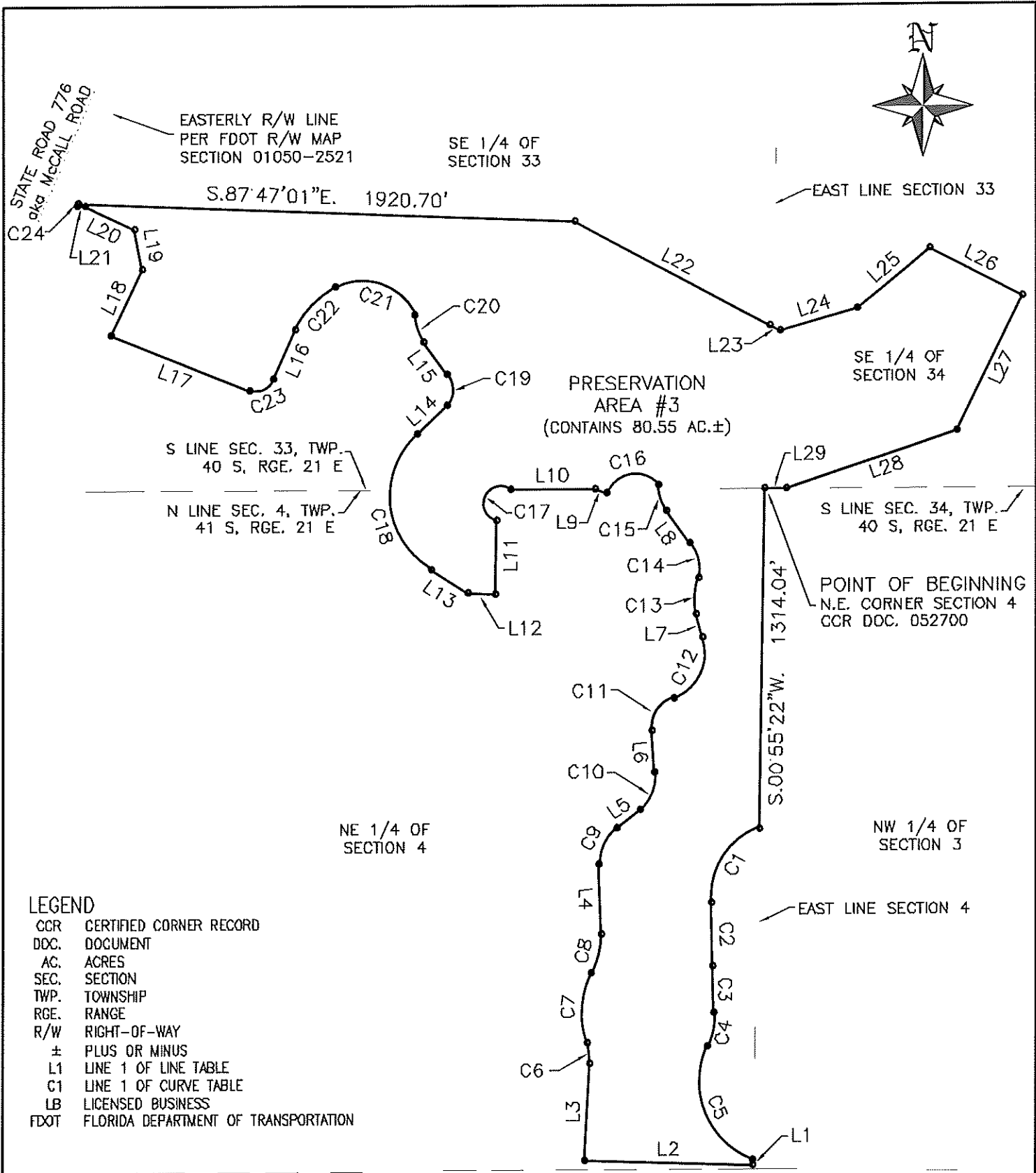
MAY 31, 2024

C. DREW BRANCH, P.S.M.
PROFESSIONAL SURVEYOR & MAPPER
FLORIDA CERTIFICATION NO. 5542

SHEET 3 OF 5

SERVING THE STATE OF FLORIDA


4161 Tamiami Trail – Building 5, Unit 501, Port Charlotte, FL 33952
(941) 625-1165 www.atwell-group.com

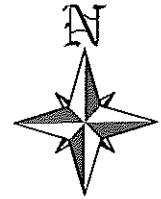


LEGEND

- CCR CERTIFIED CORNER RECORD
- DOC. DOCUMENT
- AC. ACRES
- SEC. SECTION
- TWP. TOWNSHIP
- RGE. RANGE
- R/W RIGHT-OF-WAY
- ± PLUS OR MINUS
- L1 LINE 1 OF LINE TABLE
- C1 LINE 1 OF CURVE TABLE
- LB LICENSED BUSINESS
- FDOT FLORIDA DEPARTMENT OF TRANSPORTATION

NOTE: THIS NOT A BOUNDARY SURVEY

 <p>ATWELL 866.860.4200 www.atwell-group.com 4181 TAMMAMI TRAIL, BLDG 5, UNIT 501 PORT CHARLOTTE, FL 33682 941.929.1193</p>	<p>SKETCH AND DESCRIPTION PRESERVATION AREA #3 CHARLOTTE COUNTY, FLORIDA</p>				
	COMPLETION DATE:	PROJECT:	DRAFTED BY:	DESIGNED BY:	REVIEWED BY:
	8/28/24	4188A	JB	COB	4 of 5



CURVE TABLE

CURVE	RADIUS	ARC LENGTH	CHORD LENGTH	CHORD BEARING	DELTA ANGLE
C1	279.82'	368.20'	342.21'	S.32°31'31"W.	75°23'34"
C2	1921.19'	242.74'	242.58'	S.01°33'06"E.	7°14'21"
C3	2172.36'	181.68'	181.63'	S.00°19'40"E.	4°47'31"
C4	284.80'	133.39'	132.17'	S.10°41'38"W.	26°50'07"
C5	325.84'	527.85'	472.00'	S.22°17'50"E.	92°49'02"
C6	203.73'	80.49'	79.97'	N.08°14'56"W.	22°38'09"
C7	341.30'	276.53'	269.03'	N.03°38'40"E.	46°25'21"
C8	337.20'	157.32'	155.89'	N.13°29'25"E.	26°43'51"
C9	172.01'	160.36'	154.62'	N.25°16'04"E.	53°24'50"
C10	180.35'	183.82'	158.07'	N.21°13'32"E.	51°58'56"
C11	115.47'	180.20'	147.66'	N.34°10'01"E.	79°29'20"
C12	183.30'	291.67'	261.85'	N.25°02'58"E.	91°10'15"
C13	290.35'	144.20'	142.72'	N.03°00'22"E.	28°27'17"
C14	150.73'	141.88'	136.70'	N.13°55'32"W.	53°56'05"
C15	170.84'	104.91'	103.27'	N.17°34'24"W.	35°11'07"
C16	117.72'	246.72'	203.98'	S.81°28'03"W.	120°04'52"
C17	66.38'	230.38'	130.97'	S.24°25'23"W.	198°50'43"
C18	329.62'	612.02'	527.82'	N.05°45'37"W.	106°22'56"
C19	97.44'	131.52'	121.76'	N.01°07'22"E.	77°19'56"
C20	240.62'	111.59'	110.59'	N.18°15'11"W.	26°34'17"
C21	230.71'	364.27'	327.59'	N.71°10'05"W.	90°27'51"
C22	370.92'	230.87'	227.16'	S.44°08'09"W.	35°39'47"
C23	68.33'	112.59'	100.28'	S.66°27'41"W.	94°24'55"
C24	2356.83'	8.44'	8.44'	N.24°54'16"E.	0°12'19"

LINE TABLE

LINE	BEARING	DISTANCE
L1	S.00°58'40"W.	19.35'
L2	N.88°36'50"W.	651.03'
L3	N.03°04'09"E.	379.40'
L4	N.01°19'45"W.	269.63'
L5	N.53°39'48"E.	113.17'
L6	N.03°59'00"W.	161.39'
L7	N.14°36'39"W.	90.17'
L8	N.35°09'58"W.	155.01'
L9	N.69°00'51"W.	48.49'
L10	N.89°58'30"W.	328.71'
L11	S.01°21'18"W.	286.67'
L12	N.87°26'43"W.	101.02'
L13	N.57°38'46"W.	169.62'
L14	N.46°37'45"E.	156.36'
L15	N.35°18'13"W.	155.02'
L16	S.23°11'46"W.	209.10'
L17	N.68°10'24"W.	576.90'
L18	N.25°00'49"E.	277.52'
L19	N.09°55'23"W.	159.14'
L20	N.64°59'20"W.	211.92'
L21	N.87°17'38"W.	27.71'
L22	S.61°51'34"E.	859.94'
L23	S.61°58'33"E.	40.30'
L24	N.74°10'10"E.	315.16'
L25	N.50°09'19"E.	360.02'
L26	S.82°48'04"E.	404.94'
L27	S.26°09'43"W.	579.76'
L28	S.71°31'20"W.	694.38'
L29	N.89°49'55"W.	82.63'

LEGEND

- CCR CERTIFIED CORNER RECORD
- DOC. DOCUMENT
- AC. ACRES
- SEC. SECTION
- TWP. TOWNSHIP
- RGE. RANGE
- R/W RIGHT-OF-WAY
- ± PLUS OR MINUS
- L1 LINE 1 OF LINE TABLE
- C1 LINE 1 OF CURVE TABLE
- LB LICENSED BUSINESS
- FDOT FLORIDA DEPARTMENT OF TRANSPORTATION

NOTE: THIS NOT A BOUNDARY SURVEY



ATWELL

866.860.4200 www.atwell-group.com
 4151 TAMIAMI TRAIL, BLDG 5, UNIT 501
 PORT CHARLOTTE, FL 33682
 941.829.1183

SKETCH AND DESCRIPTION
 PRESERVATION AREA #3
 CHARLOTTE COUNTY, FLORIDA

COMPLETION DATE:	PROJECT:	DRAFTED BY:	DESIGNED BY:	REVIEWED BY:	SHEET:
5/28/24	4106A	JB		COB	5 of 5



DESCRIPTION OF A PARCEL OF LAND
LYING IN SECTION 3, T-41-S, R-21-E,
CHARLOTTE COUNTY, FLORIDA.

(PRESERVATION AREA 1)

A TRACT OR PARCEL OF LAND SITUATED IN THE STATE OF FLORIDA, COUNTY OF CHARLOTTE, LYING IN AND BEING A PORTION OF THE SOUTH 1/2 OF THE NORTHWEST 1/4 OF SECTION 3, TOWNSHIP 41 SOUTH, RANGE 21 EAST, BEING FURTHER BOUNDED AND DESCRIBED AS FOLLOWS:

COMMENCING AT THE CENTER OF SAID SECTION 3, AS DEPICTED IN CERTIFIED CORNER RECORD DOCUMENT #082720; THENCE N.00°11'31"W. ALONG THE EAST LINE OF THE NORTHWEST 1/4 OF SAID SECTION 3 (FOR A BASIS OF BEARINGS) FOR 332.38 FEET TO THE POINT OF BEGINNING; THENCE CONTINUE N.00°11'31"W. ALONG SAID EAST LINE FOR 332.39 FEET TO THE SOUTHEAST CORNER OF THE NORTHEAST 1/4 OF THE SOUTHEAST 1/4 OF THE NORTHWEST 1/4 OF SAID SECTION 3; THENCE N.89°19'30"W. ALONG THE SOUTH LINE OF THE NORTHEAST 1/4 OF THE SOUTHEAST 1/4 OF THE NORTHWEST 1/4 OF SAID SECTION 3 FOR 658.45 FEET TO THE SOUTHWEST CORNER OF THE NORTHEAST 1/4 OF THE SOUTHEAST 1/4 OF THE NORTHWEST 1/4 OF SAID SECTION 3; THENCE N.00°05'28"E. ALONG THE WEST LINE OF THE NORTHEAST 1/4 OF THE SOUTHEAST 1/4 OF THE NORTHWEST 1/4 OF SAID SECTION 3 FOR 662.85 FEET TO A POINT ON THE NORTH LINE OF THE SOUTH 1/2 OF THE NORTHWEST 1/4 OF SAID SECTION 3, SAID POINT ALSO BEING THE NORTHWEST CORNER OF THE NORTHEAST 1/4 OF THE SOUTHEAST 1/4 OF THE NORTHWEST 1/4 OF SAID SECTION 3; THENCE N.89°29'25"W. ALONG SAID NORTH LINE FOR 378.50 FEET TO A POINT ON SAID NORTH LINE; THENCE S.21°52'09"E. FOR 1012.10 FEET TO A POINT ON THE WEST LINE OF THE SOUTHEAST 1/4 OF THE SOUTHEAST 1/4 OF THE NORTHWEST 1/4 OF SAID SECTION 3; THENCE S.00°05'28"W. ALONG SAID WEST LINE FOR 354.79 FEET TO A POINT ON SAID WEST LINE; THENCE S.89°09'41"E. ALONG A LINE BEING PARALLEL TO AND 35 FEET NORTH OF THE SOUTH LINE OF THE NORTHWEST 1/4 OF SAID SECTION 3 FOR 397.54 FEET; THENCE N.00°11'31"W. FOR 297.00 FEET; THENCE S.89°14'34"E. FOR 264.04 FEET TO A POINT ON THE EAST LINE OF THE NORTHWEST 1/4 OF SAID SECTION 3, SAID POINT ALSO BEING THE POINT OF BEGINNING.

CONTAINS 11.79 ACRES, MORE OR LESS.

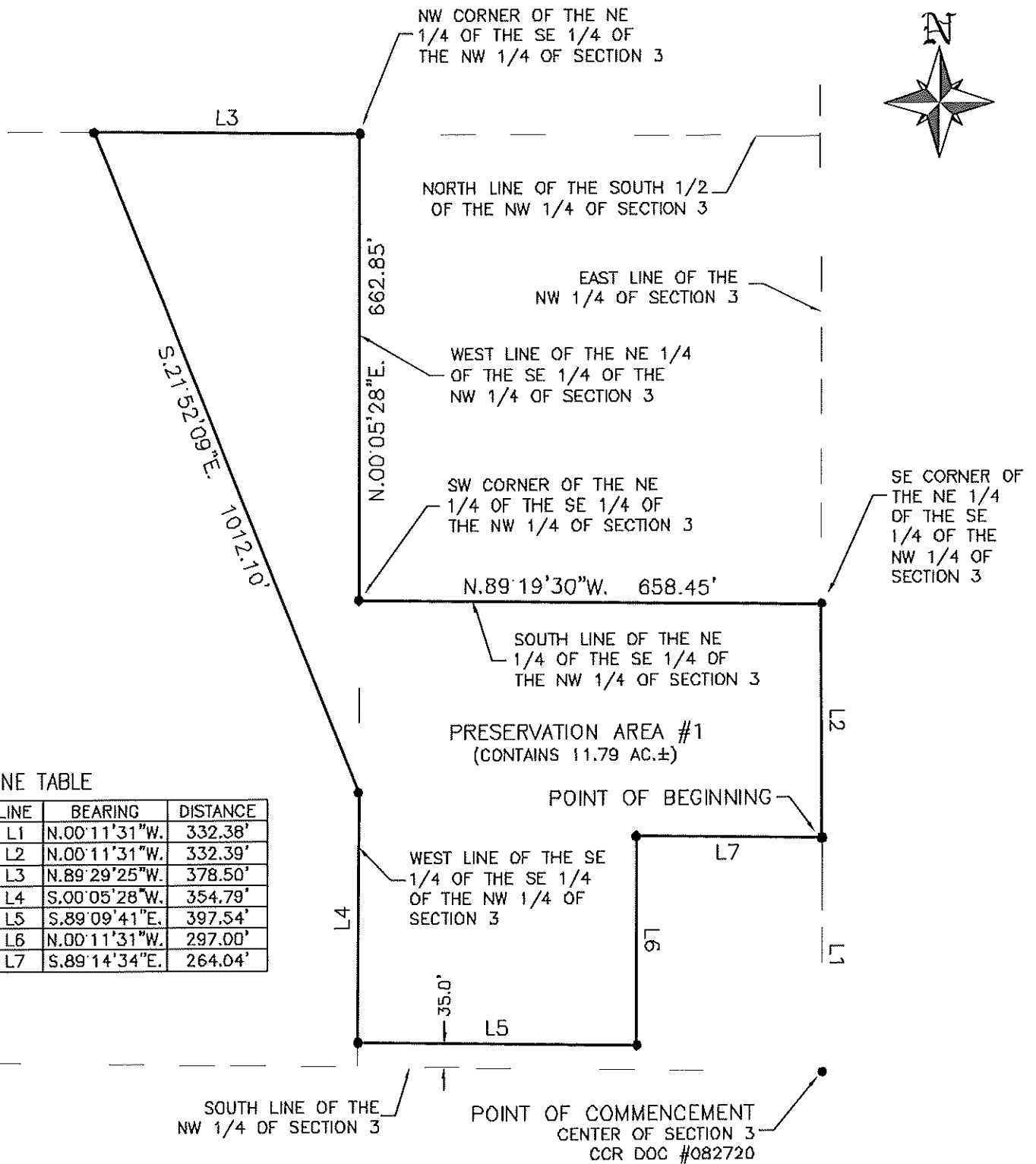
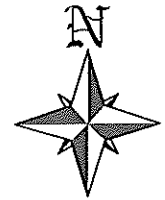
ATWELL, LLC
FLORIDA LICENSED BUSINESS NO. LB7832

MAY 31, 2024

C. DREW BRANCH, P.S.M.
PROFESSIONAL SURVEYOR & MAPPER
FLORIDA CERTIFICATION NO. 5542

SHEET 1 OF 2

SERVING THE STATE OF FLORIDA



LINE TABLE

LINE	BEARING	DISTANCE
L1	N.00°11'31"W.	332.38'
L2	N.00°11'31"W.	332.39'
L3	N.89°29'25"W.	378.50'
L4	S.00°05'28"W.	354.79'
L5	S.89°09'41"E.	397.54'
L6	N.00°11'31"W.	297.00'
L7	S.89°14'34"E.	264.04'

LEGEND

- CCR CERTIFIED CORNER RECORD
- DOC. DOCUMENT
- AC. ACRES
- ± PLUS OR MINUS
- L1 LINE 1 OF LINE TABLE
- LB LICENSED BUSINESS

NOTE: THIS NOT A BOUNDARY SURVEY



SKETCH AND DESCRIPTION
PRESERVATION AREA #1
CHARLOTTE COUNTY, FLORIDA

COMPLETION DATE:	PROJECT:	DRAFTED BY:	DESIGNED BY:	REVIEWED BY:	SHEET:
5/28/24	4168A	JB		COB	2 of 2



**HARBOR VILLAGE
Property Ownership Table
Comprehensive Plan Amendment**

Ownership Entity	Person/Entity Authorizing	Authorized Agent
Dennis J. Fullenkamp	RVi/Atwell/Rob Berntsson	Dennis J. Fullenkamp
Charlotte Sarasota Holdings, LLC	Charlotte 246 Holdings, LLC	Dennis J. Fullenkamp
Charlotte 246 Holdings, LLC (Sharma)	Maronda Homes, LLC	Ron Greenland/Neekaytan Sharma
MAR McCall 37, LLC	RVi/Atwell/Rob Berntsson	Dennis J. Fullenkamp
Fullenkamp Dennis J Trustee	Maronda Homes, LLC	Dennis J. Fullenkamp
2008 FL Recovery Limited Partnership	Maronda Homes, LLC	Russell (Rusty) Richardson

