

PP-20-05-12 (Quasi-Judicial)

BCC Land Use Meeting 10-13-2020

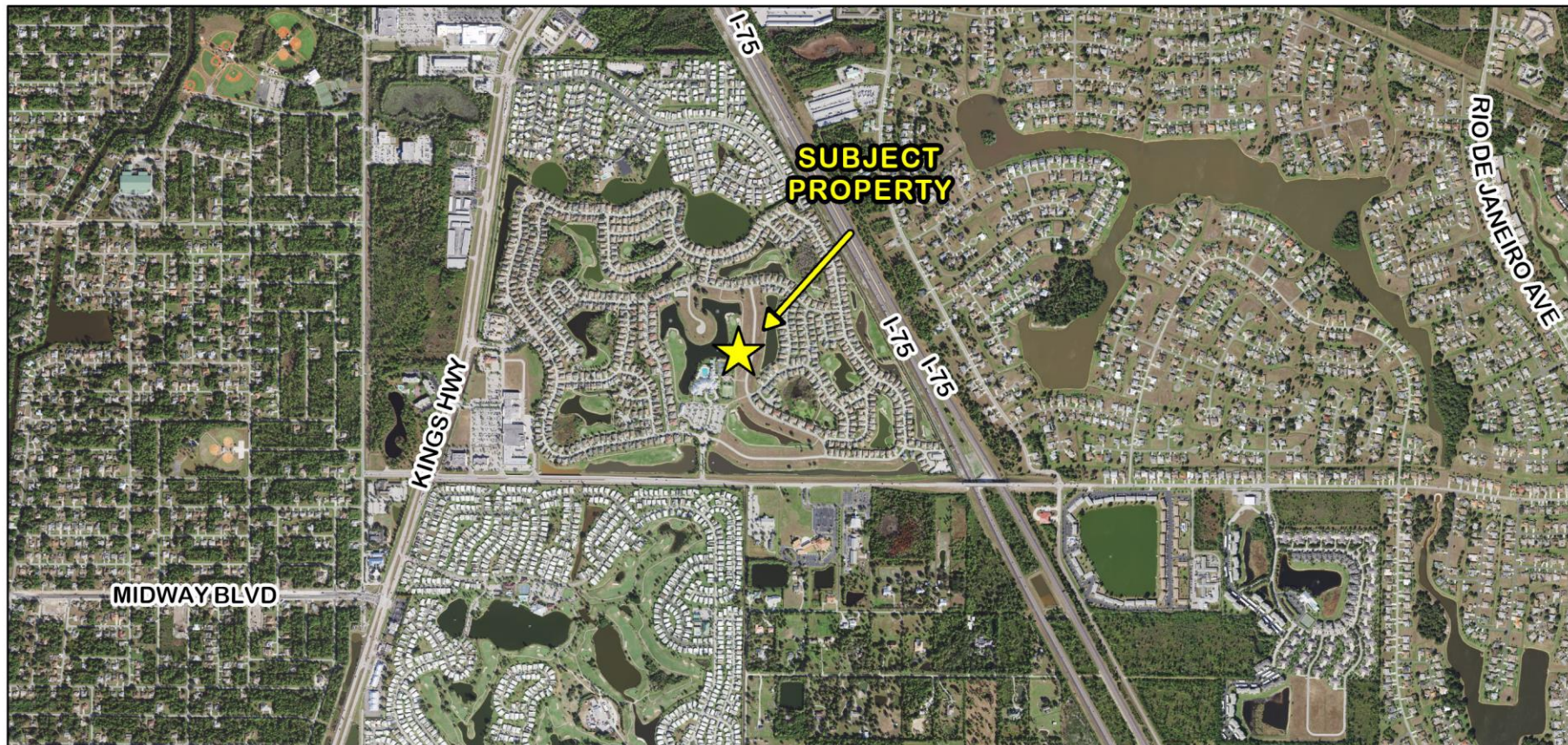
Neal Communities of Southwest Florida, LLC



CHARLOTTE COUNTY
FLORIDA

PP-20-05-12

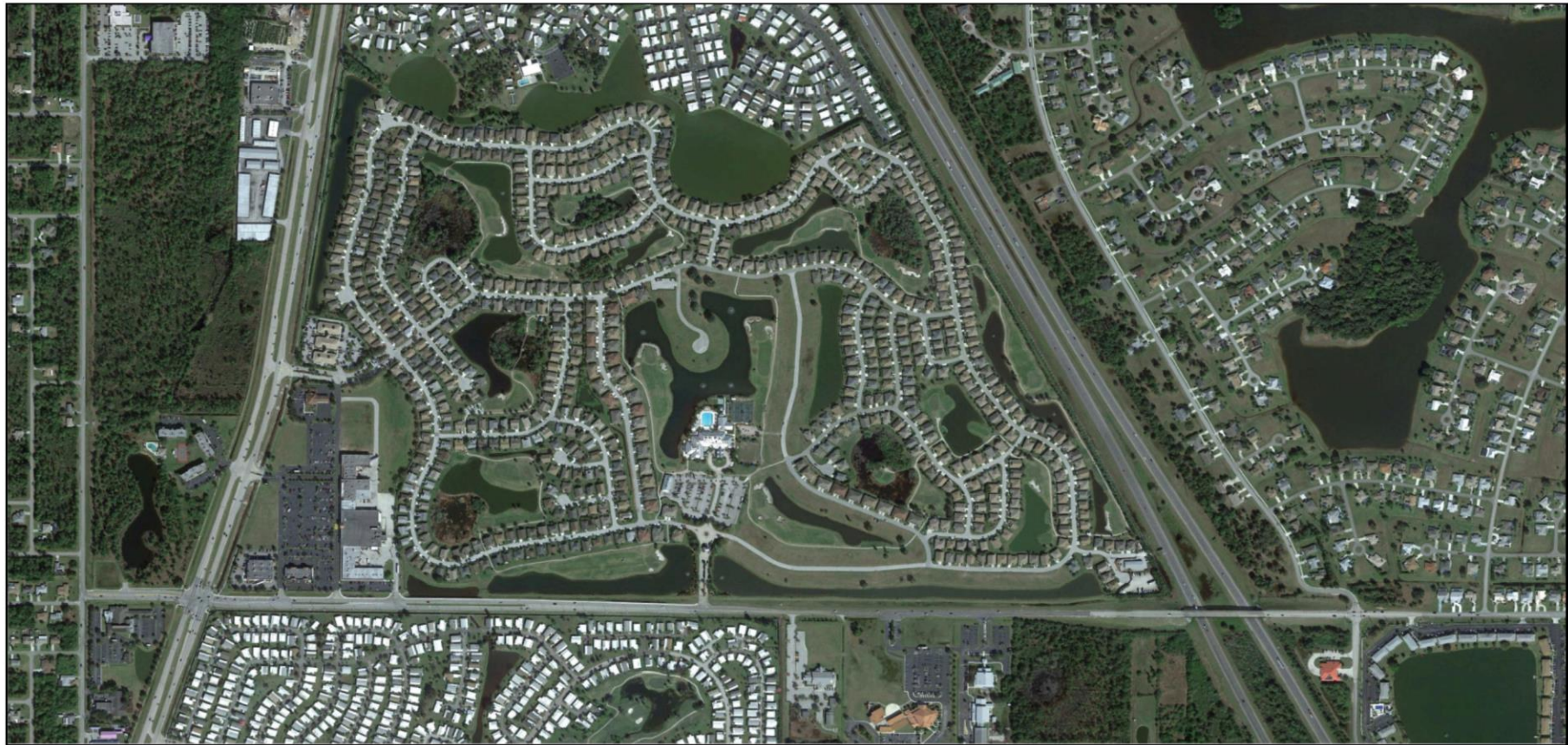
A request for Preliminary Plat approval for a residential subdivision to be named Kingsgate Phase 8, located one mile west of I-75, north of Rampart Blvd. and east of Kings Hwy., within the Victoria Estate DRI.



PP-20-05-12 2017 Aerial Location Map (Full Range)

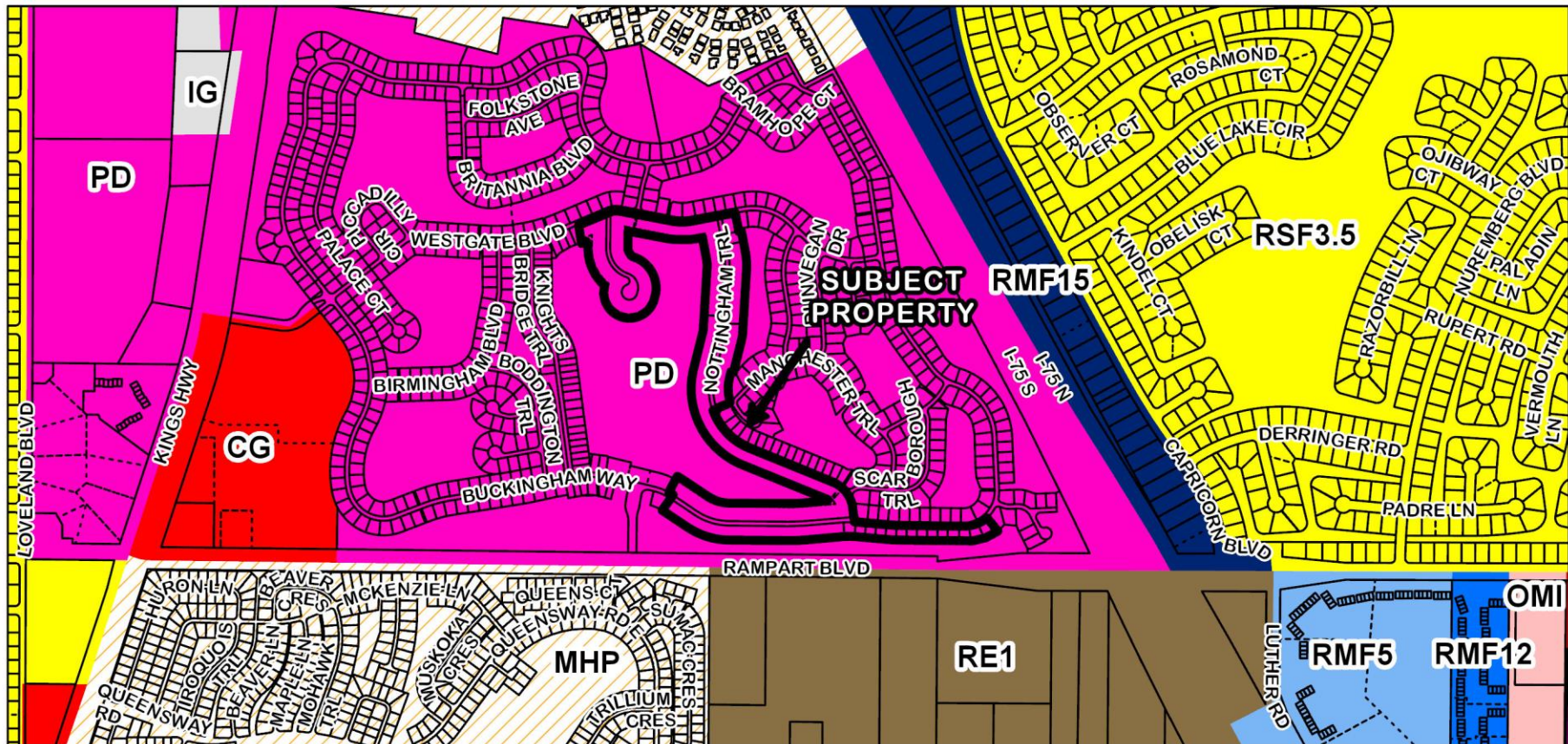


PP-20-05-12 2017 Aerial Location Map

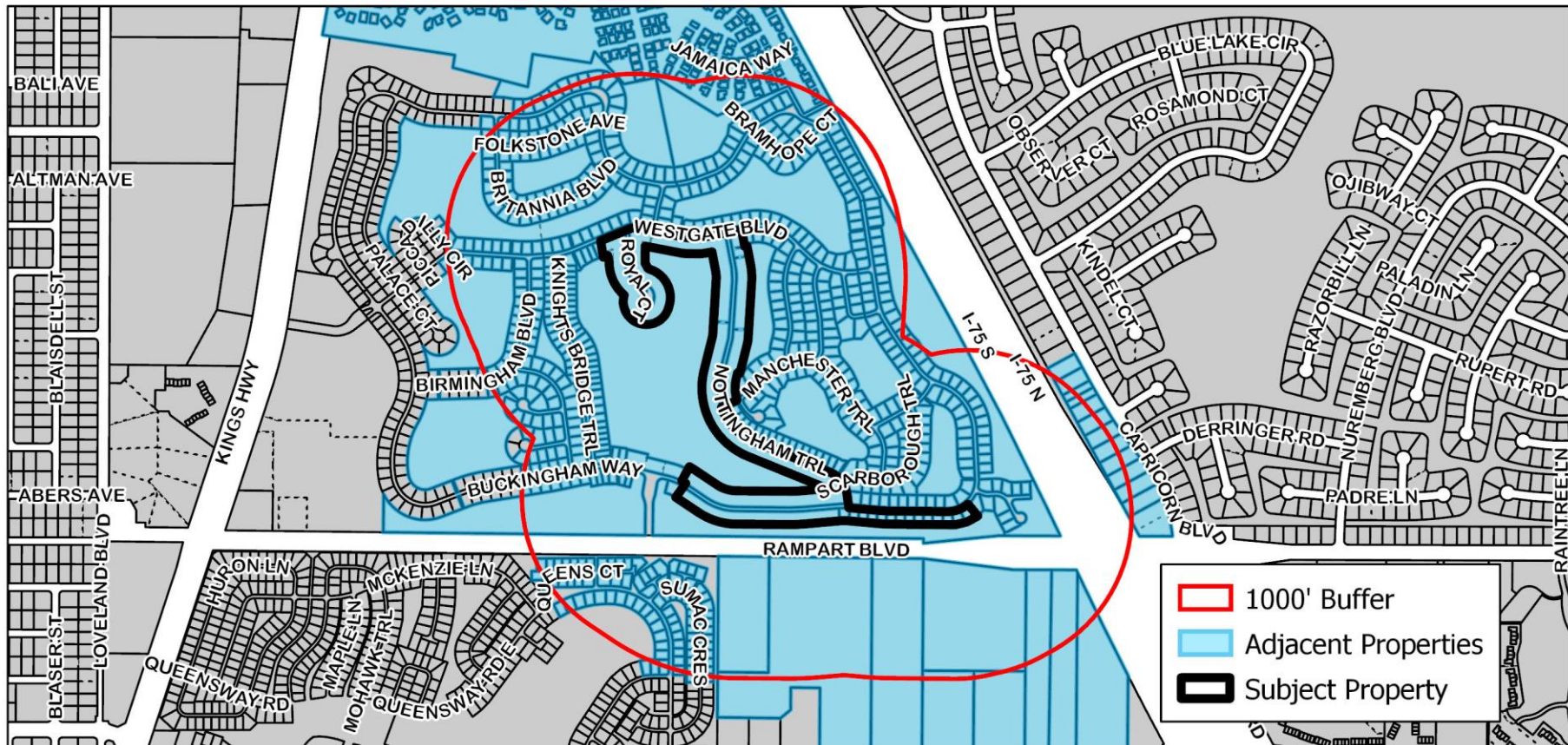


PP-20-05-12 2019 Google Earth Image

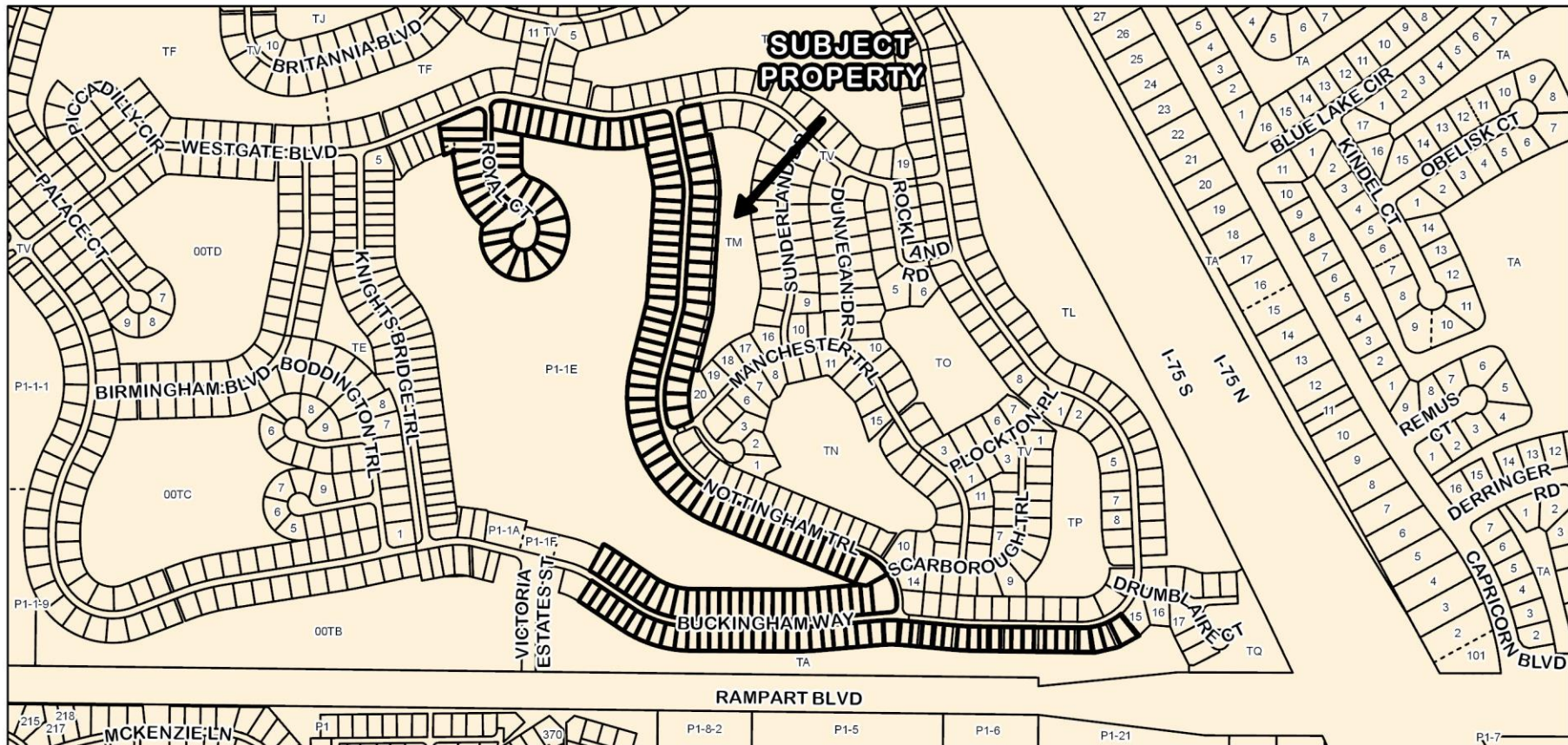




PP-20-05-12 Zoning Designations



PP-20-05-12 1000' Buffer Map



PP-20-05-12 Proposed Changes