

# PP-20-07-13 (Quasi-Judicial)

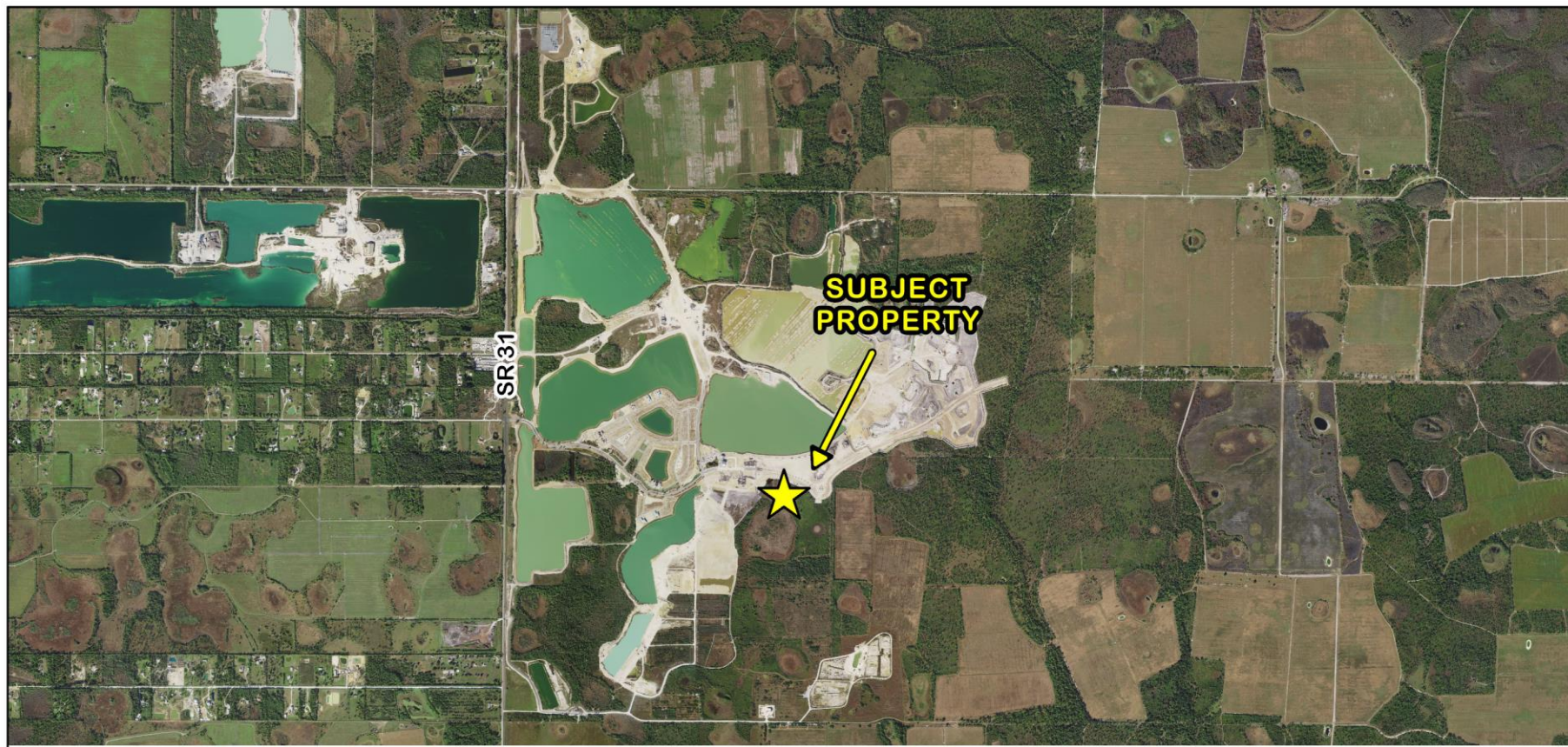
BCC Land Use Meeting 10-13-2020  
Babcock Property Holdings LLC



CHARLOTTE COUNTY  
FLORIDA

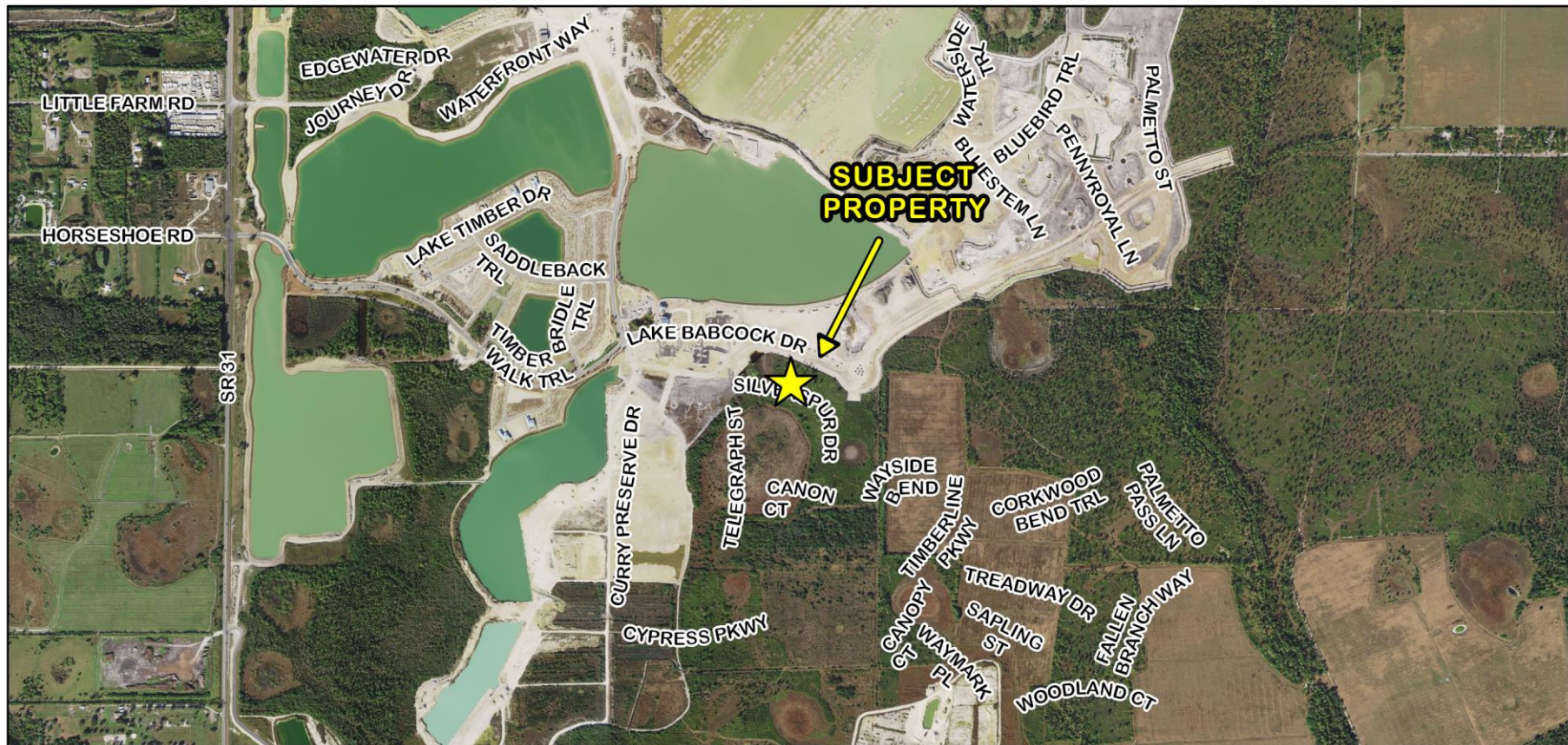
# PP-20-07-13

A request for Preliminary Plat approval for 38 single family residential subdivision to be named Babcock Ranch Phase 1B3, is located south of Bermont Road, north of the border with Lee County, east of Babcock Ranch Road, and west of the border with Glades County, within the Babcock Community DRI.



**PP-20-07-13    2017 Aerial Location Map (Full Range)**





**PP-20-07-13 2017 Aerial Location Map (Mid-Range)**

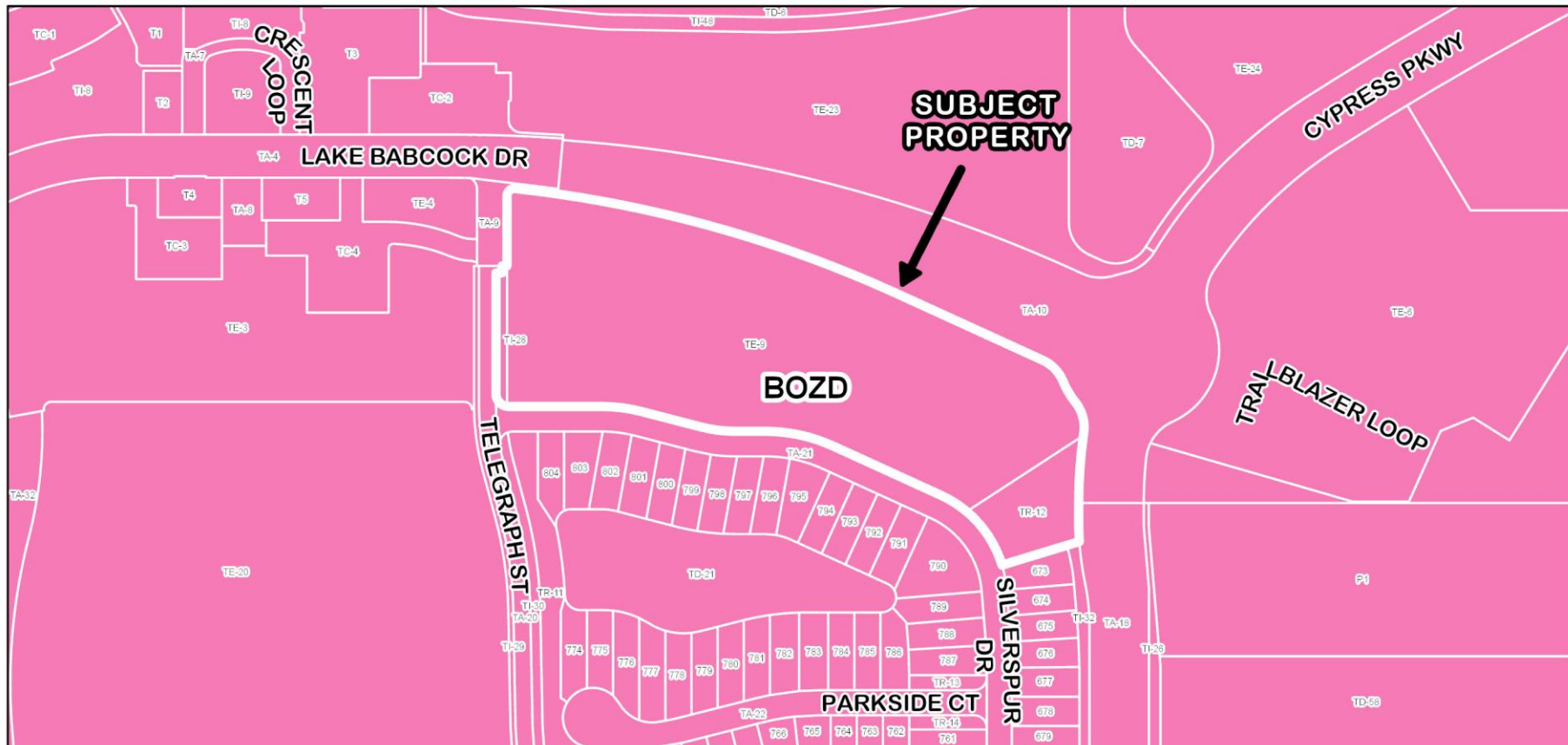




**PP-20-07-13 2019 Google Earth Image**

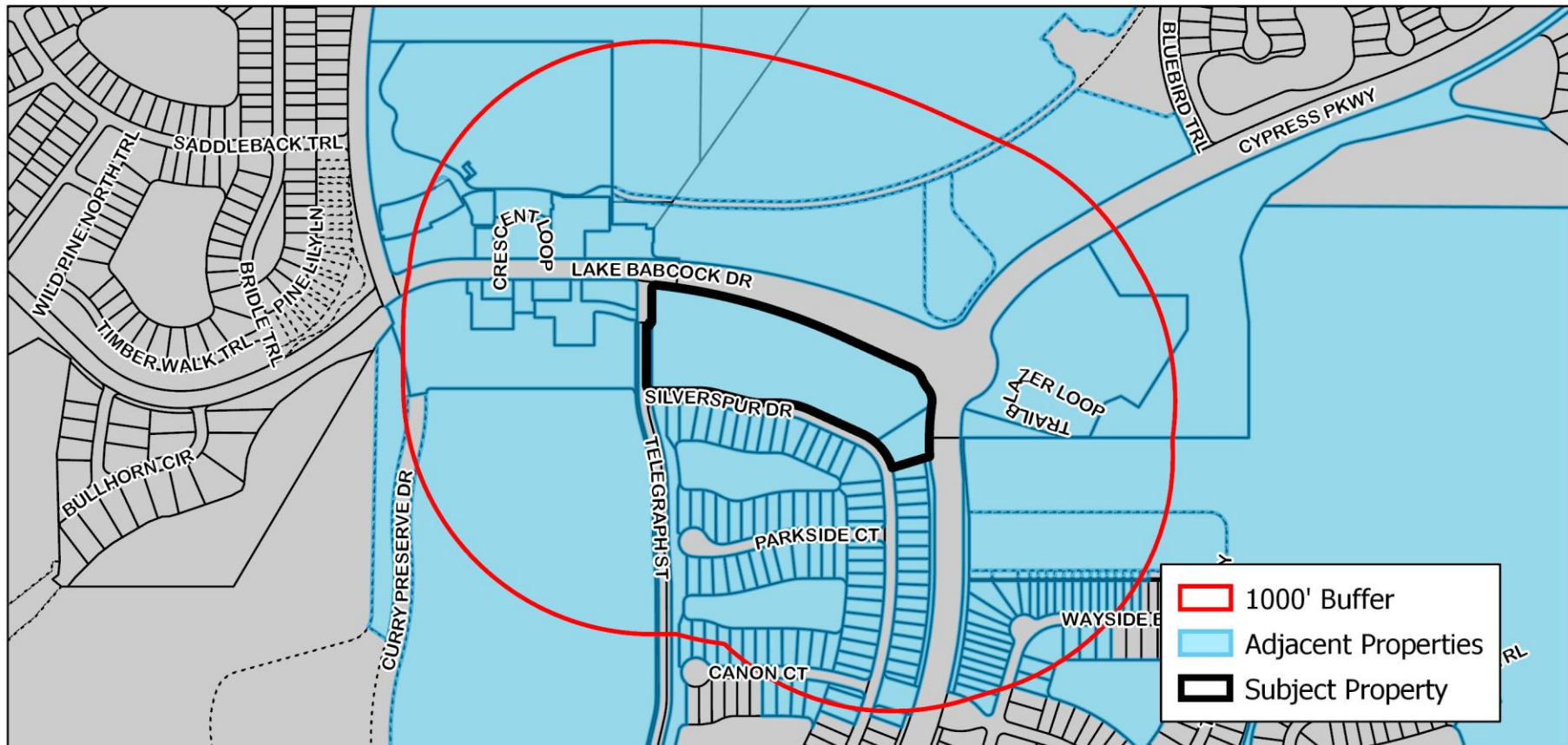


## PP-20-07-13 FLUM Designations



## PP-20-07-13 Zoning Designations





**PP-20-07-13 1000' Buffer Map**





## PP-20-07-13 Proposed Changes