

# 20LAD-00000-00001 (Quasi-Judicial)

(Adoption Hearing  
BCC Land Use Meeting 10-13-2020)

Neal Communities of SW Florida, Inc.



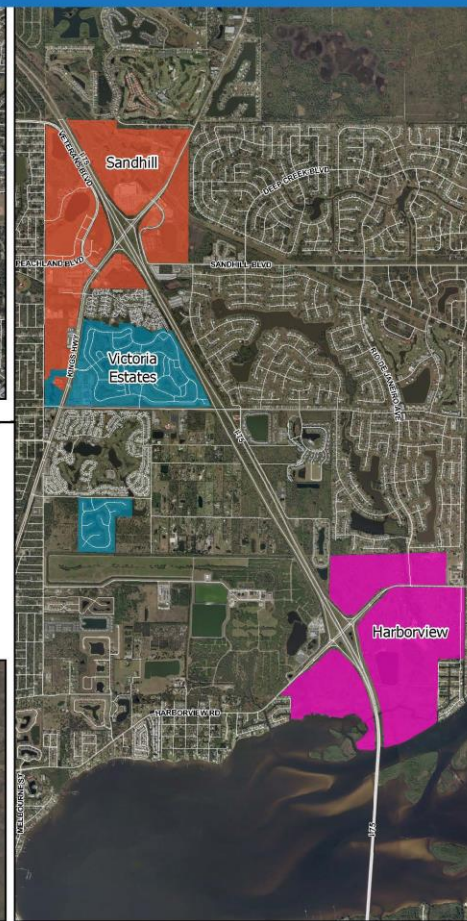
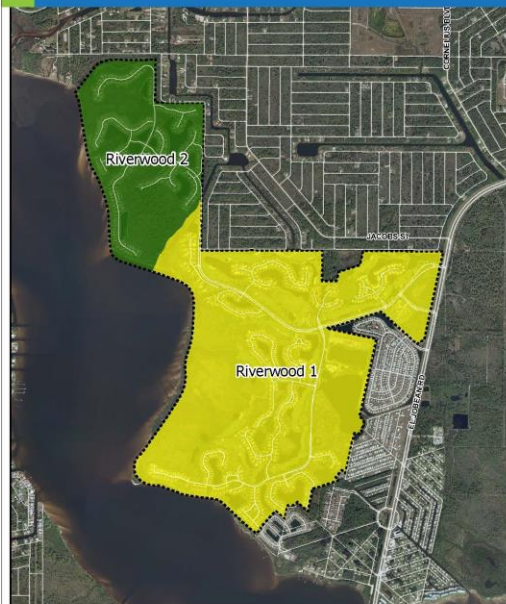
CHARLOTTE COUNTY  
FLORIDA

# Proposed Change

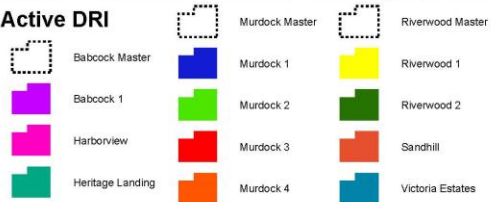
An amendment to the Victoria Estates DRI Development Order (DO) by extending the buildout date of this DO to August 12, 2035

# CHARLOTTE COUNTY

## Developments of Regional Impact (DRI's)



### Active DRI



© Copyright 2019 Port Charlotte, FL by Charlotte County

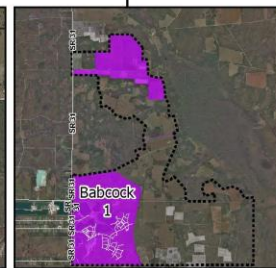
Updated: 6/11/2019 11:05:59 AM by: KGoodwin - 2831

M:\Departments\GIS\Projects\Maps\_Development\Active\_DRI\Active\_DRI2015.mxd

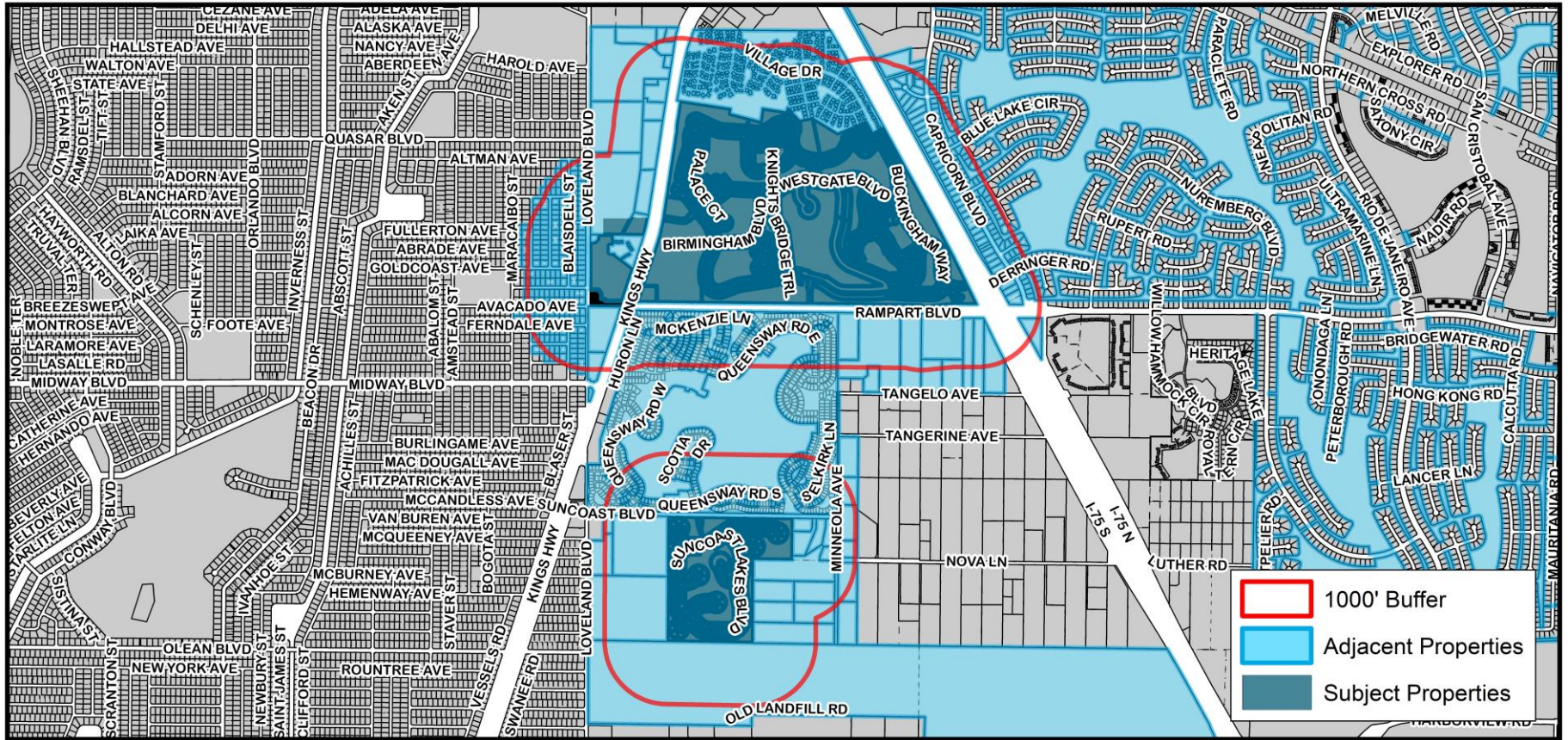


(NOT TO SCALE)

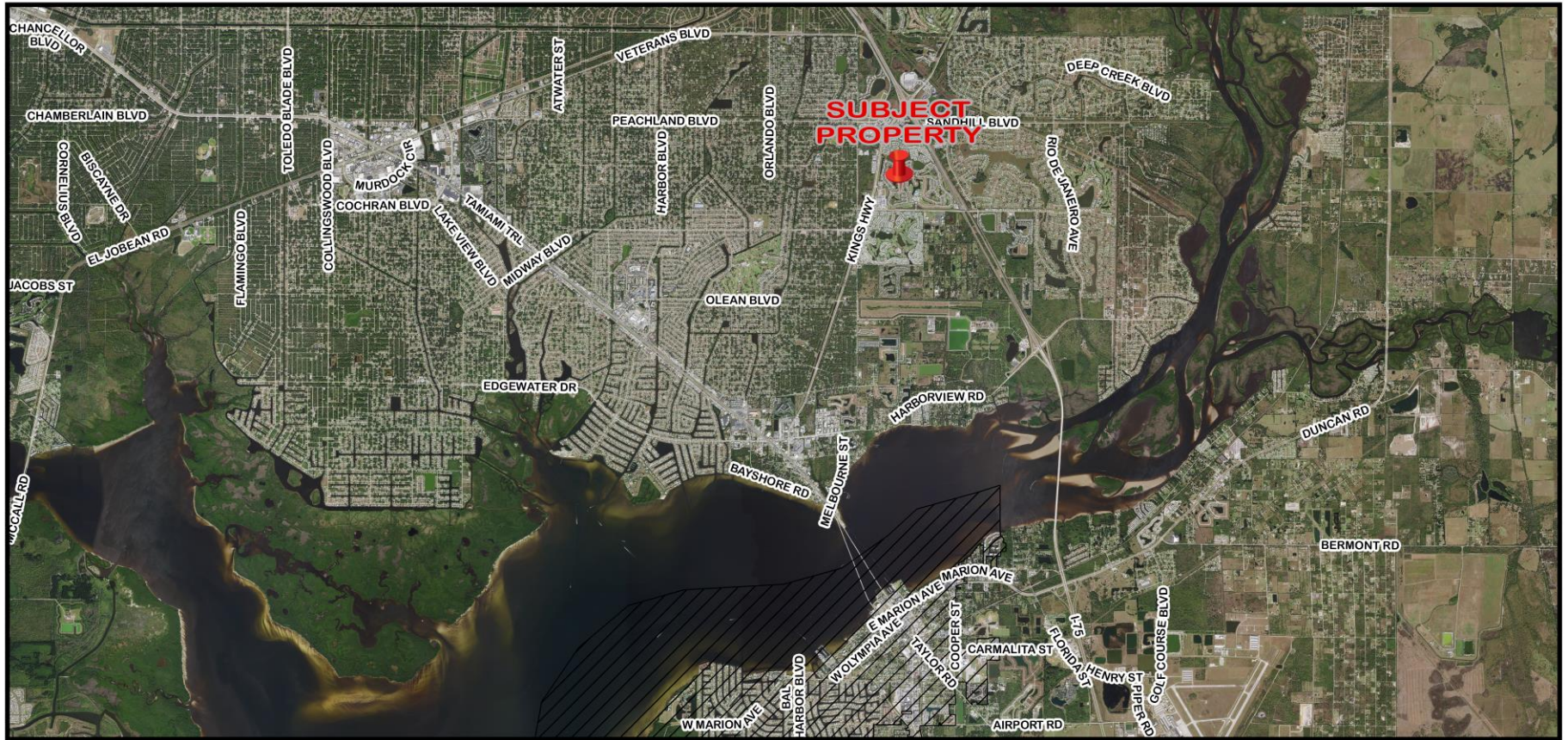
Stateplane Projection  
Datum: NAD83  
Units: Feet  
Source: Community Development  
SWMDC, COC  
Metadata available upon request



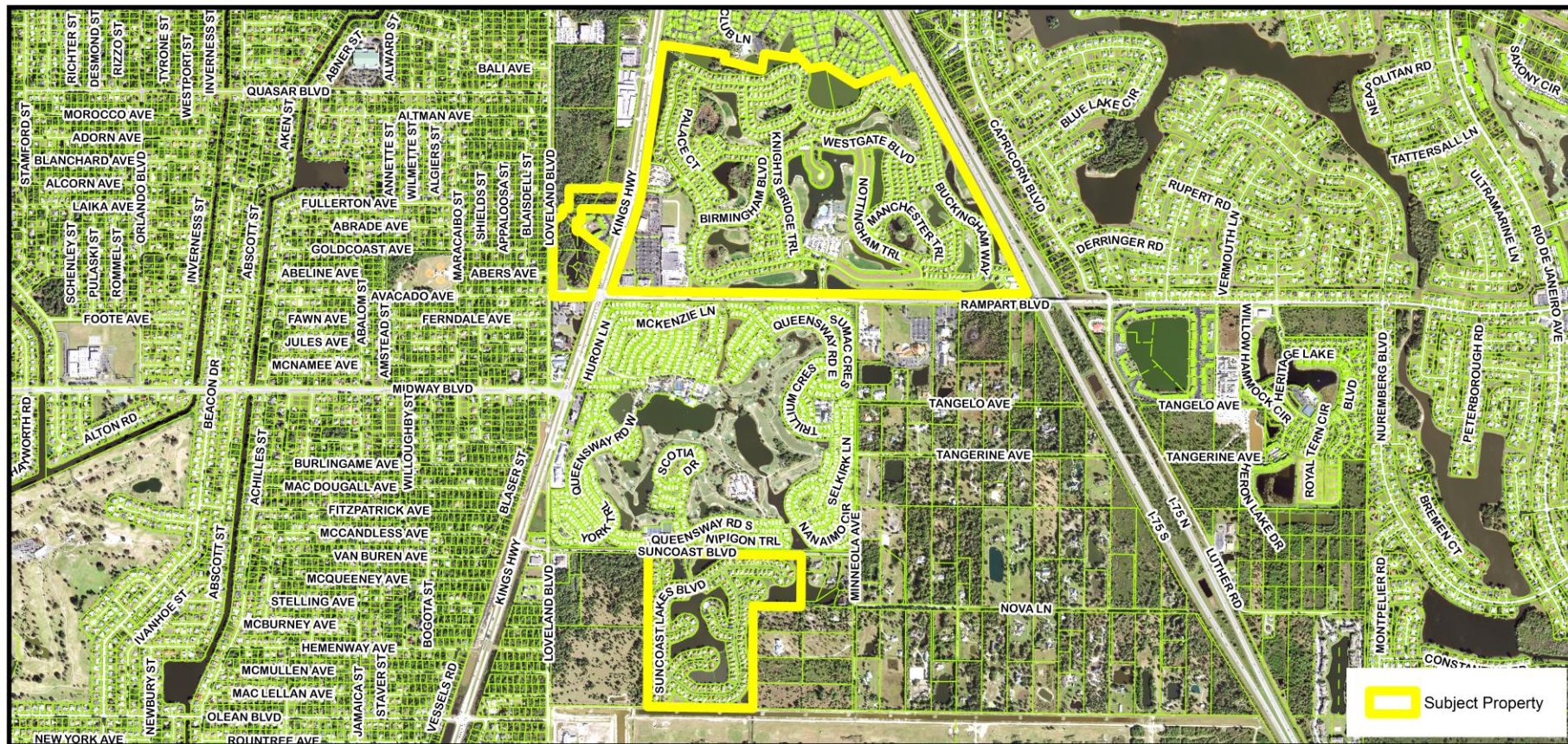






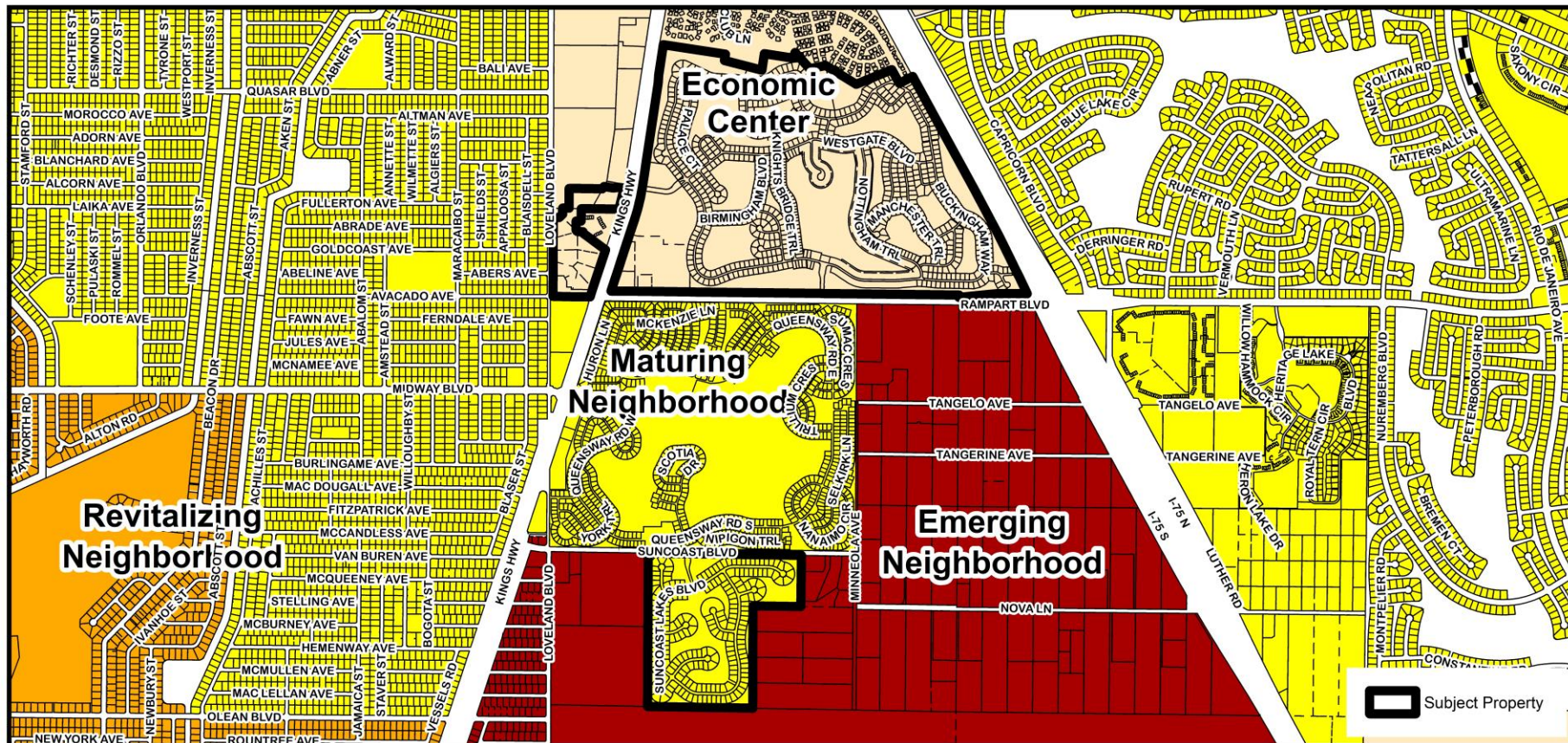






20LAD-00000-00001 Aerial Image









## 20LAD-00000-00001 FLUM Designations





## 20LAD-00000-00001 Zoning Designations





## 20LAD-00000-00001 Aerial Image



# Proposed Change

An amendment to the Victoria Estates of DRI Development Order (DO) by extending the buildout date of this DO to August 12, 2035